



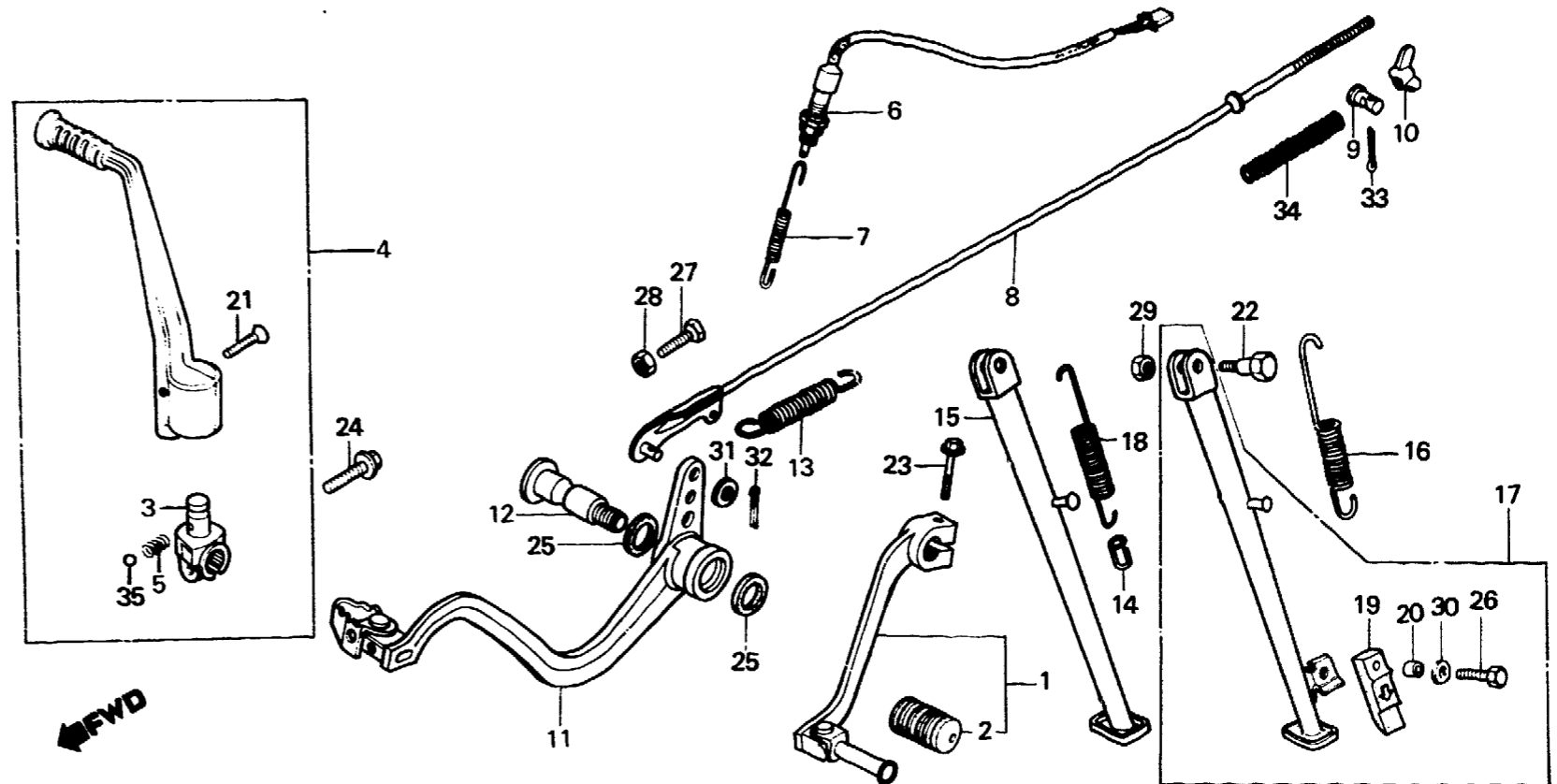
F-18

Brake pedal • Change pedal • Side stand

Pédale de frein • Pédale de changement • Bequille latéral

Bremspedal • Schaltpedal • Seitenständer

Pedal de freno • Pedal de cambio • Estante lateral



BMG2-52

Service item	F.R.T.	Ref. No.	Part No.	Description	Reqd. No. XL600						Serial No.	Area code
					Rd	Ld	Re	Le	Rf	Lf		
		21	90101-329-000	BOLT, KICK ARM	1	1	1	1	1	1		
		22	90108-429-000	SCREW, SIDE STAND PIVOT	1	1						B,CM,E,ED,F,G IT,SA,SD,SW,U
			90108-KG0-000	SCREW, SIDE STAND PIVOT	1				1			AR,2G B,CM,E,G,SA,SD U ED,F,IT,SW
		23	90173-MG3-000	BOLT, FLANGE, 6X20	1	1	1	1	1	1		
		24	90215-KF0-000	BOLT, FLANGE, 8X28	1	1	1	1	1	1		
		25	91251-444-000	DUST SEAL, 15X20X2.5	2	2	2	2	2	2		
		26	92000-06028-0A	BOLT, HEX., 6X28	1		1	1	1			CM,ED,G,SW AR,B,E,F,IT,SA SD,U,2G
		27	92225-06025-00	BOLT, HEX., 6X25	1	1	1	1	1	1		
		28	94001-06000-0S	NUT, HEX., 6MM	1	1	1	1	1	1		
		29	94031-10000	NUT, HEX., 10MM	1	1						B,CM,E,ED,F,G IT,SA,SD,SW,U

K 9



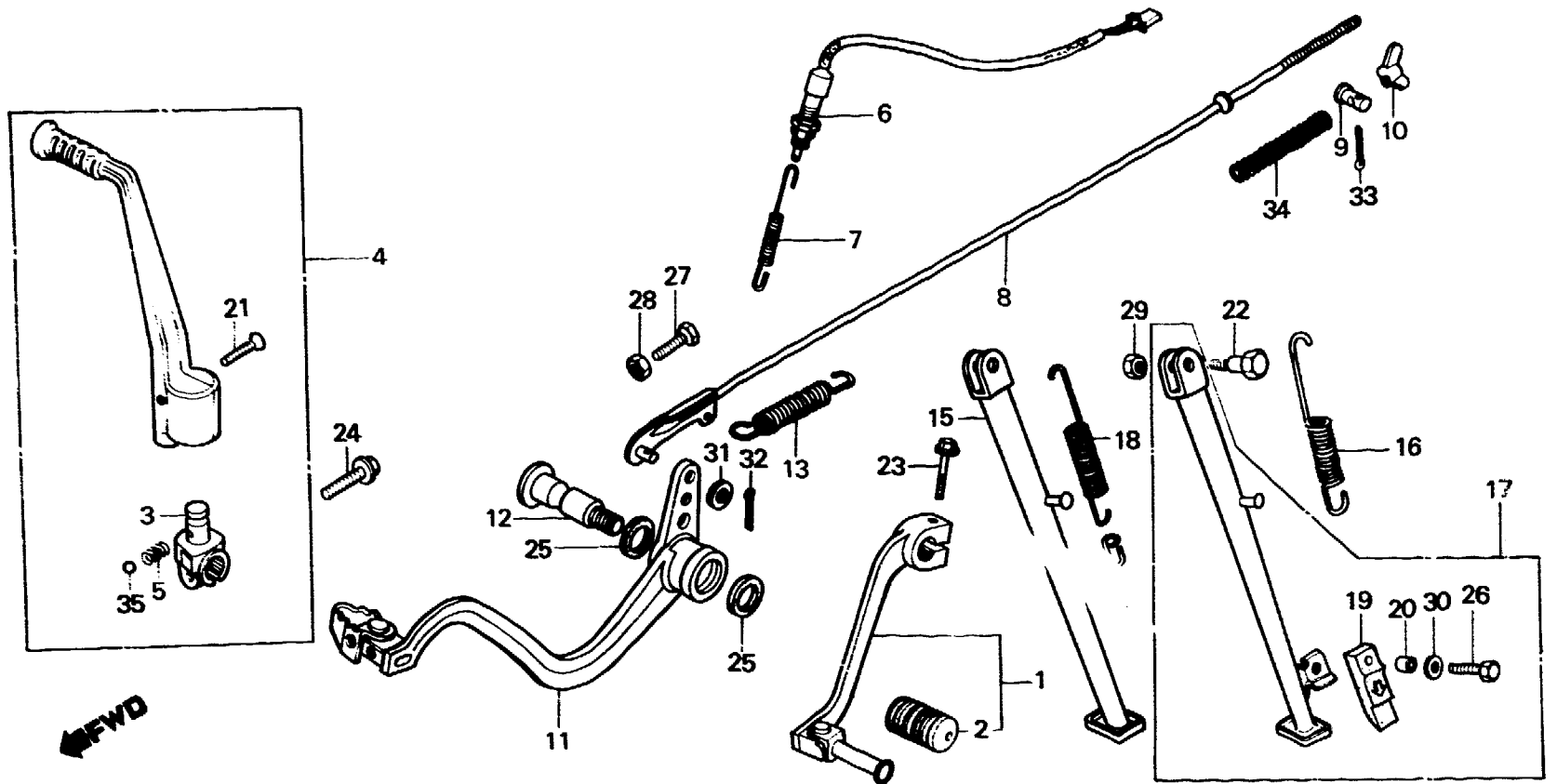
F-18

**Brake pedal • Change pedal •
Side stand**

**Pédale de frein • Pédale
de changement • Bequille latéral**

**Bremspedal • Schaltpedal •
Seitenständer**

**Pedal de freno • Pedal de cambio •
Estante lateral**



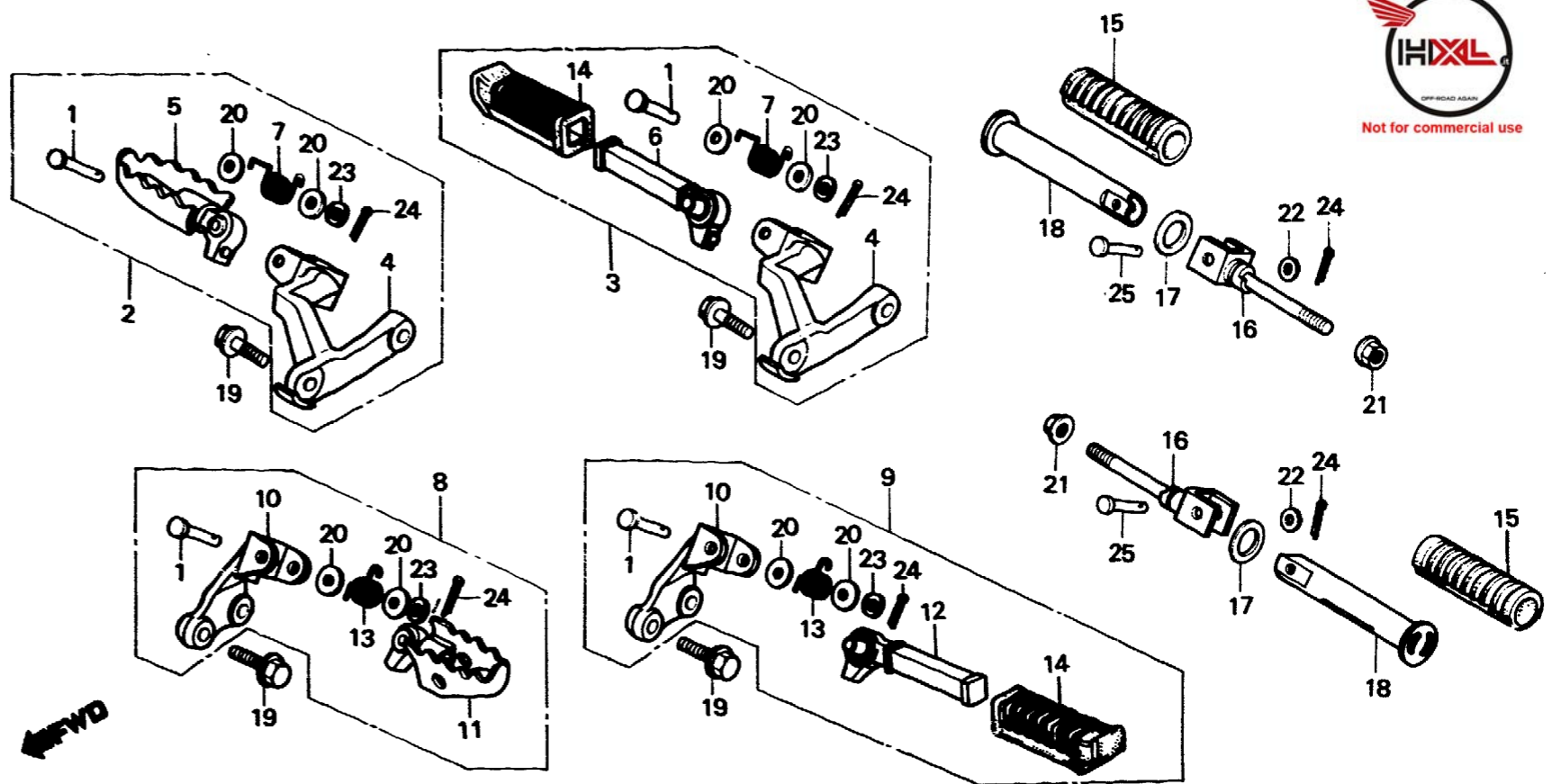
BMG2-52

Service item	F.R.T.	Ref. No.	Part No.	Description	Reqd. No. XL600						Serial No.	Area code
					Rd	Ld	RE	LE	Rf	Lf		
			90304-GE8-003	NUT, U, 10MM	1					1		AR,2G B,CM,E,ED,F,G IT,SA,SD,SW,U CM,ED,G,SW AR,B,E,F,IT,SA SD,U,2G
		30	94101-06000	WASHER, PLAIN, 6MM	1		1	1	1		1	
		31	94101-08000	WASHER, PLAIN, 8MM	1	1	1	1	1	1	1	
		32	94201-16150	PIN, SPLIT, 1.6X15	1	1	1	1	1	1	1	
		33	94201-20200	PIN, SPLIT, 2.0X20	1	1	1	1	1	1	1	
		34	95014-73100	SPRING A, BRAKE ROD	1	1	1	1	1	1	1	
		35	96211-08000	BALL, STEEL, #8 (1/4)	1	1	1	1	1	1	1	

K 10

F-19

Step
Repose pieds
Tritt
Estribo



BMG2-53

Service item	F.R.T.	Ref. No.	Part No.	Description	Reqd. No. XL600						Serial No.	Area code
					Rd	Ld	Rr	Lr	Rf	Lf		
ARM ASSY., R. STEP (INC. RELATIVE PART) • ARM ASSY., L. STEP (INC. RELATIVE PART) • BAR, PILLION STEP (INC. RELATIVE PART)	0.1	1	50603-MC4-000	PIN, STEP BAR JOINT	2	2	2	2	2	2		
		2	50610-MG2-000ZA	ARM ASSY., R. STEP *NH-105*	1	1	1	1		1		AR,CM,E,ED,F,IT SA,SD,SW,U
		*	50610-MG2-890ZA	ARM ASSY., R. STEP *NH-105*	1	1		1		1		B AR,CM,E,ED,F,IT SA,SD,SW,U
		3	50610-MG2-610ZA	ARM ASSY., R. STEP *NH-105*	1							G
		*	50610-MG2-710ZA	ARM ASSY., R. STEP *NH-105*						1		G,2G
		4	50615-MG2-000ZA	ARM COMP., R. STEP *NH-105*	1	1	1	1			1	AR,CM,E,ED,F,G IT,SA,SD,SW,U
		*	50615-MG2-890ZA	ARM COMP., R. STEP *NH-105*	1	1		1		1		B AR,CM,E,ED,F,G IT,SA,SD,SW,U
		5	50616-MG2-000	STEP COMP., R.	1	1	1	1		1	1	2G AR,B,CM,E,ED,F IT,SA,SD,SW,U
6	50616-MG2-610	STEP COMP., R.	1						1	G,2G		

K 11

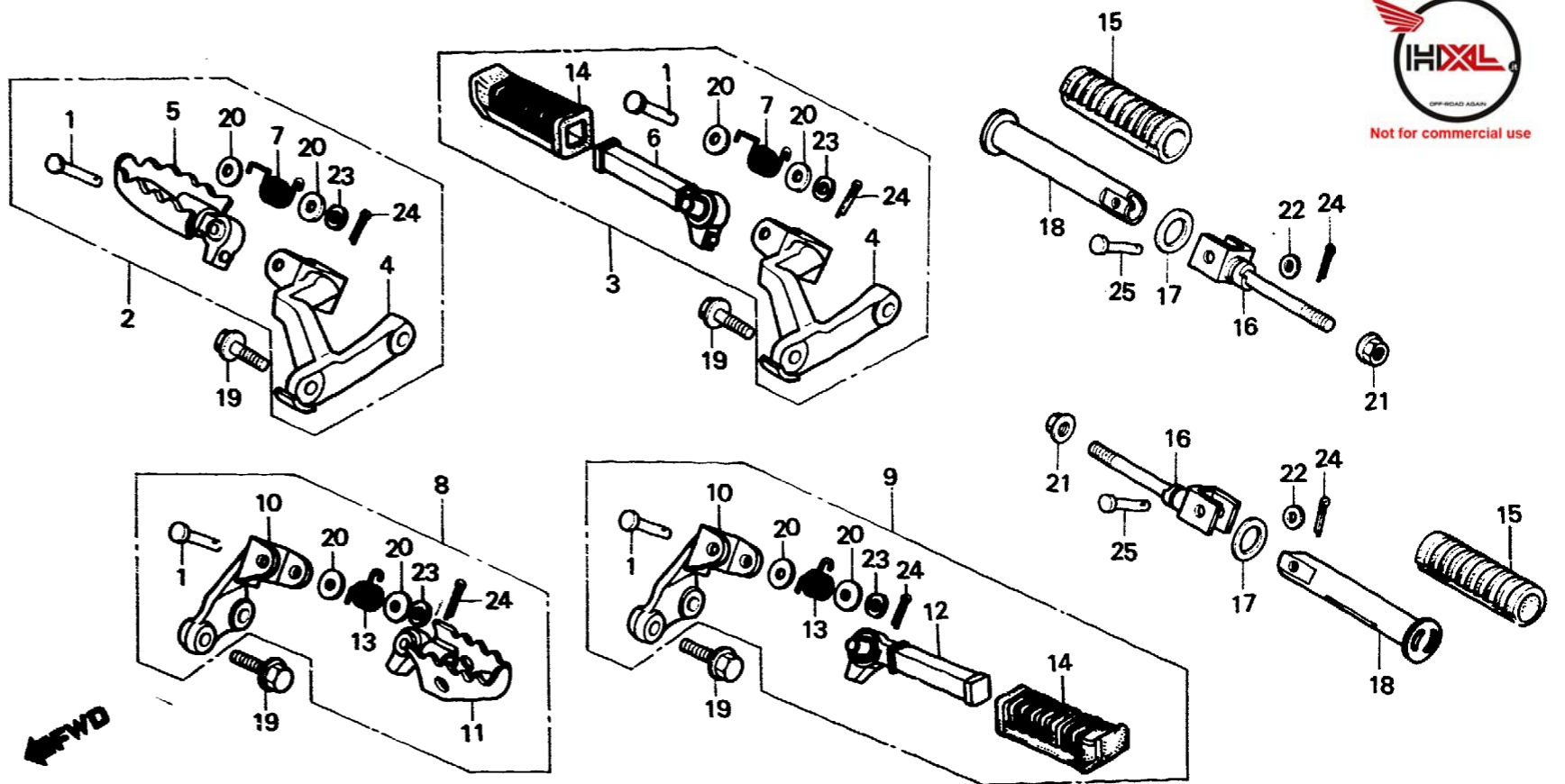
F-19

Step

Repose pieds

Tritt

Estribo



BMG2-53

Service item	F.R.T.	Ref. No.	Part No.	Description	Reqd. No.						Serial No.	Area code
					Rd	Ld	XL600	RE	LE	Rf		
		7	50617-MC4-000	SPRING, R. STEP RETURN	1	1	1	1	1	1		
		8	50620-MG2-000ZA	ARM ASSY., L. STEP *NH-105*	1	1	1	1				AR,CM,E,ED,F IT,SA,SD,SW,U B
		*	50620-MG2-890ZA	ARM ASSY., L. STEP *NH-105*	1	1		1	1			AR,CM,E,ED,F,IT SA,SD,SW,U G
		9	50620-MG2-610ZA	ARM ASSY., L. STEP *NH-105*	1					1		G,2G
		*	50620-MG2-710ZA	ARM ASSY., L. STEP *NH-105*						1		AR,CM,E,ED,F,G IT,SA,SD,SW,U B
		10	50624-MG2-000ZA	ARM COMP., L. STEP *NH-105*	1	1	1	1			1	AR,CM,E,ED,F,G IT,SA,SD,SW,U B
		*	50624-MG2-890ZA	ARM COMP., L. STEP *NH-105*	1	1		1	1		1	AR,CM,E,ED,F,G IT,SA,SD,SW,U 2G
		11	50642-MC4-000	STEP COMP., L.	1	1	1	1	1	1		AR,B,CM,E,ED,F IT,SA,SD,SW,U G,2G
		12	50642-MG2-610	STEP COMP., L.	1					1		

K 12

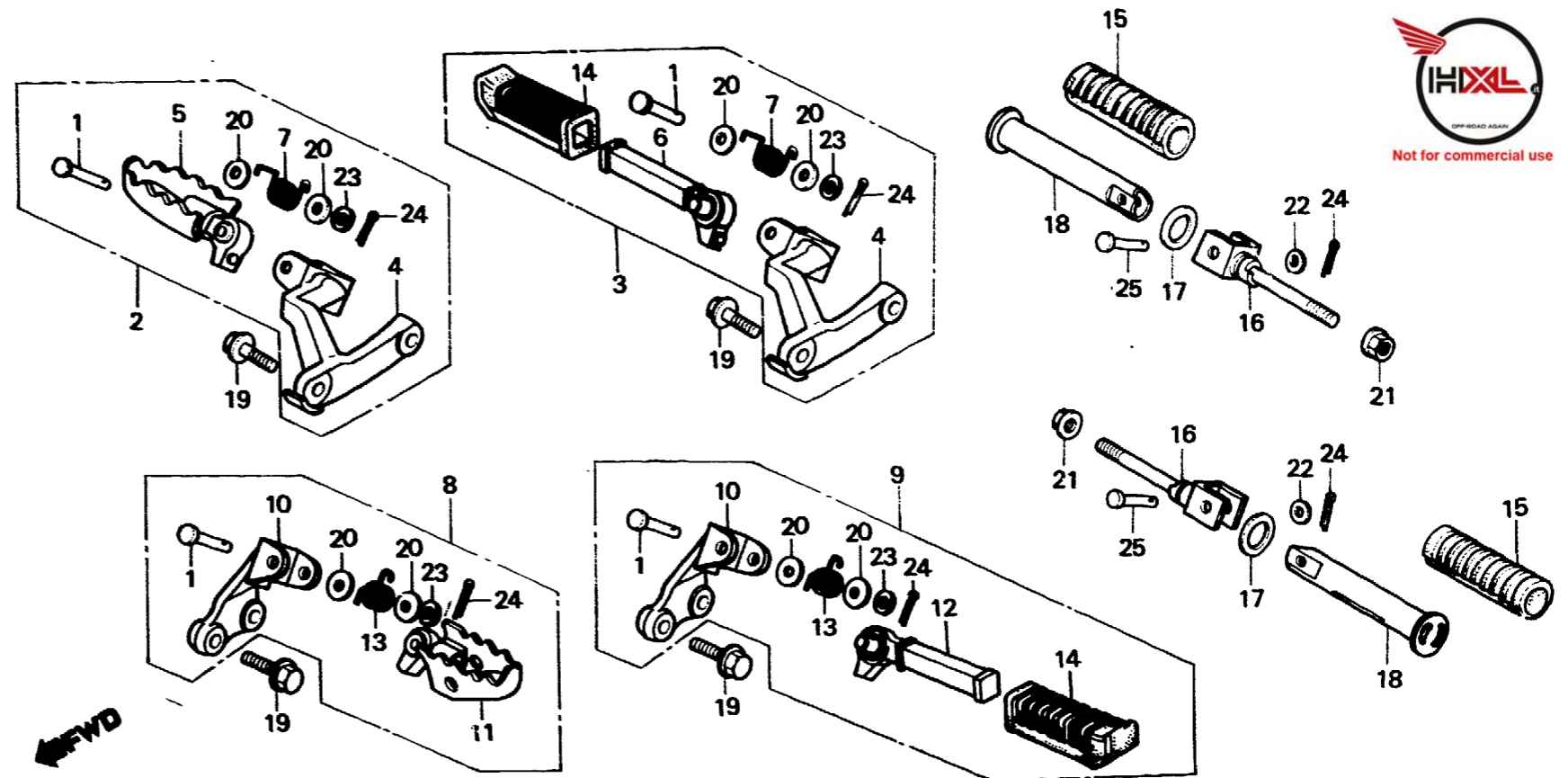
F-19

Step

Repose pieds

Tritt

Estribo



BMG2-53

Service item	F.R.T.	Ref. No.	Part No.	Description	Reqd. No. XL600						Serial No.	Area code
					Rd	Ld	Re	Le	Rf	Lf		
		13	50644-MC4-000	SPRING, L. STEP RETURN	1	1	1	1	1	1		
		14	50661-312-000	RUBBER, STEP					2			G,2G
		15	50706-MG2-000	RUBBER, PILLION STEP	2	2	2	2	2	2		
		16	50711-435-000	BRACKET, PILLION STEP	2	2	2	2	2	2		
		17	50712-405-000	WASHER, PILLION STEP	2	2	2	2	2	2		
		18	50715-MG2-000	BAR, PILLION STEP	2	2	2	2	2	2		
		19	90211-KF0-000	BOLT, FLANGE, 10X30	4	4						B,CM,E,ED,F,G IT,SA,SD,SW,U AR
			90211-MG3-000	BOLT, FLANGE, 10X42	4							
		*	90211-KF0-770	BOLT, FLANGE, 10X45			4	4		4	4	
		20	90528-229-000	WASHER, 12.5MM	4	4	4	4	4	4		
		21	94050-10000	NUT, FLANGE, 10MM	2	2	2	2	2	2		
		22	94101-06000	WASHER, PLAIN, 6MM	2	2	2	2	2	2		
		23	94101-08000	WASHER, PLAIN, 8MM	2	2	2	2	2	2		

K 13

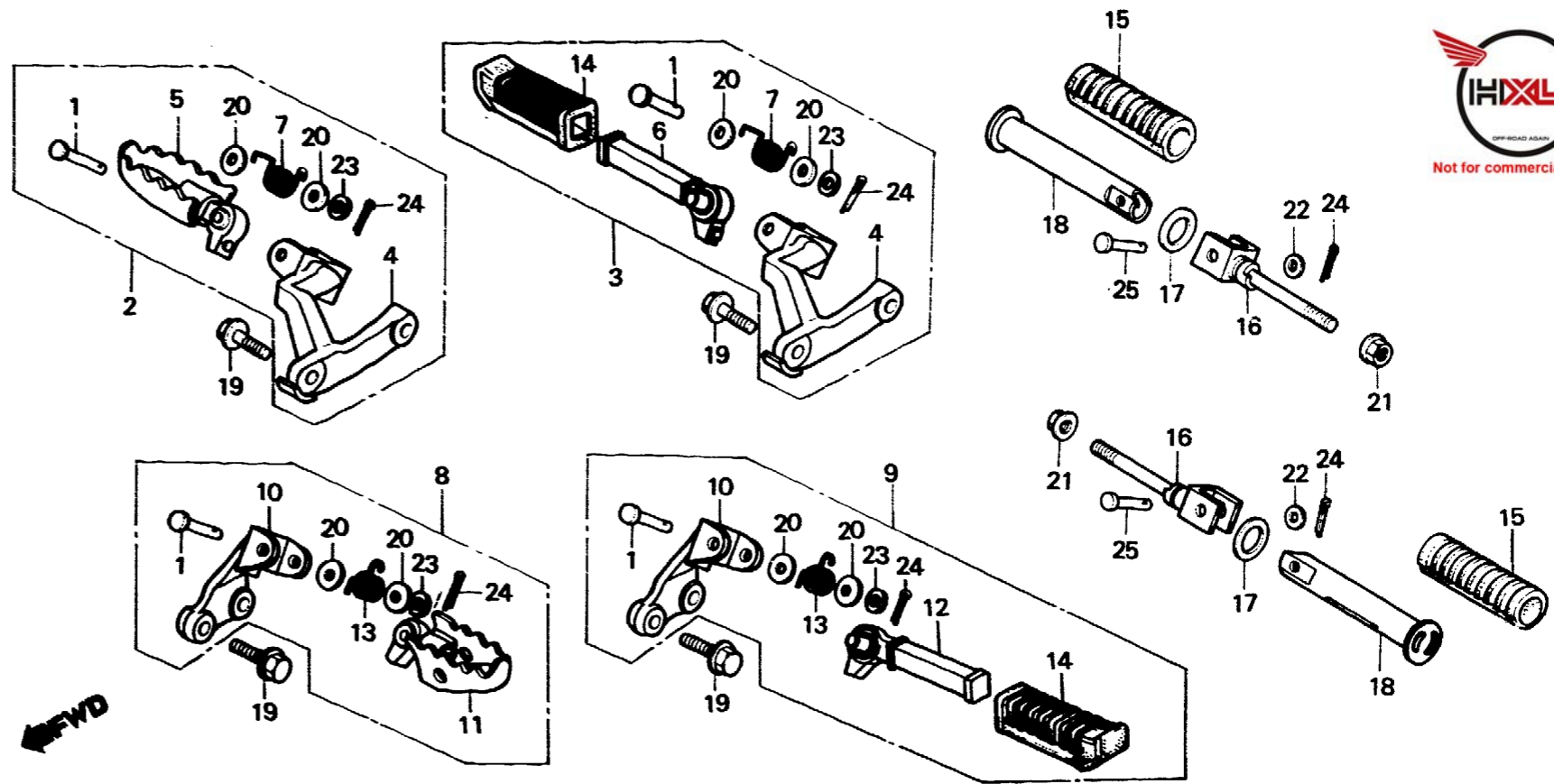
F-19

Step

Repose pieds

Tritt

Estribo



BMG2-53

Service item	F.R.T.	Ref. No.	Part No.	Description	Reqd. No. XL600						Serial No.	Area code
					Rd	Ld	RE	LE	Rf	Lf		
		24	94201-16150	PIN, SPLIT, 1.6X15	4	4	4	4	4	4		
		25	95015-81000	PIN A, PILLION STEP	2	2	2	2	2	2		

K 14



Not for commercial use

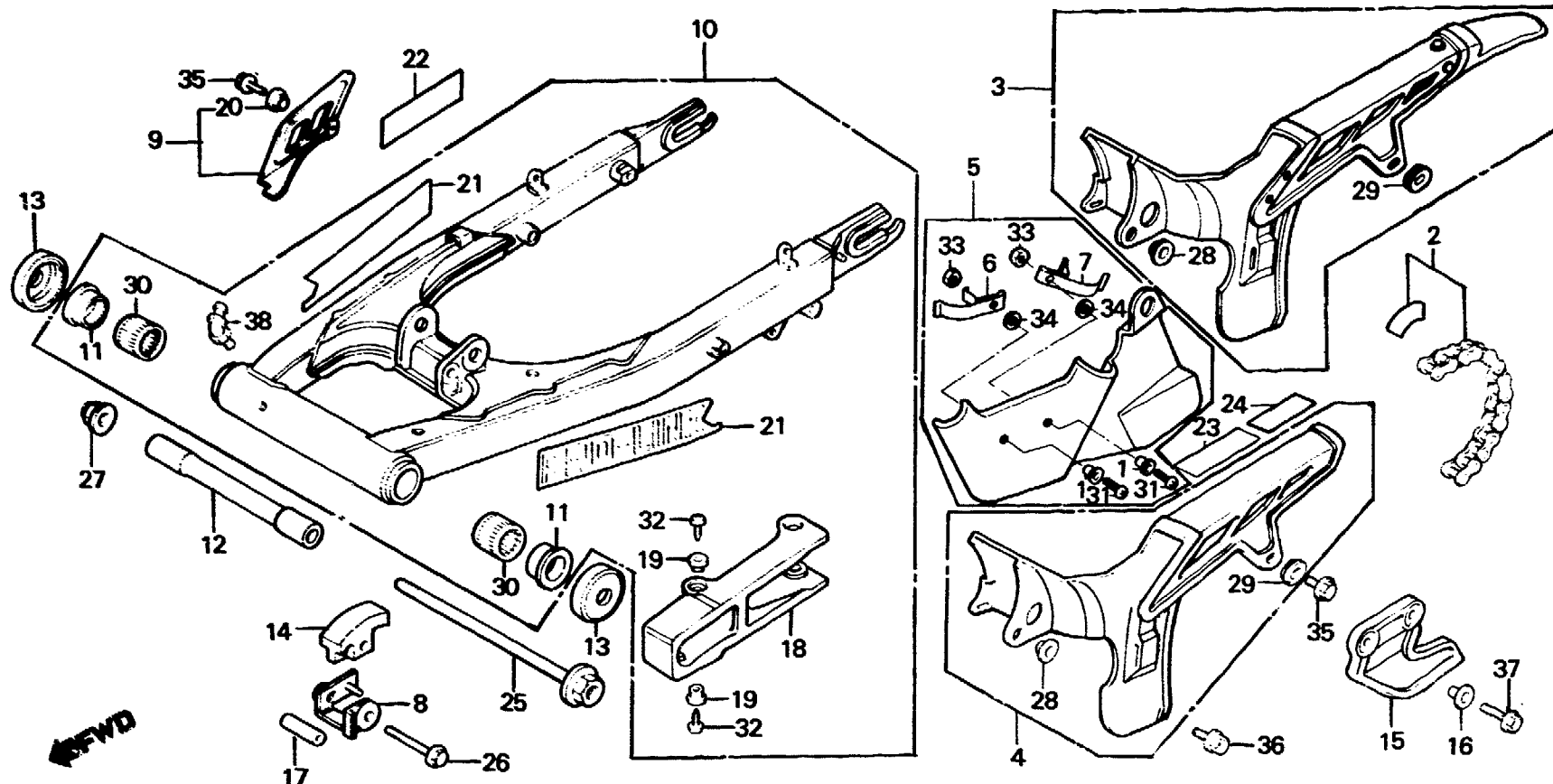
F-20

Rear fork • Chain case

Fourche arrière • Carter de chaîne

Hintere Schwinge • Kettenschutz

Horquilla trasera • Caja de cadena



BMG2-54

Service item	F.R.T.	Ref. No.	Part No.	Description	Reqd. No. XL600					Serial No.	Area code	
					Rd	Ld	RE	LE	Rf			Lf
CHAIN SET, DRIVE	0.7	1	33716-463-601	COLLAR, SETTING	2				2		ED	
• COLLAR, RR. FORK CENTER					2					2	G,U,2G	
CASE COMP., DRIVE CHAIN	0.1									2	SD	
• CASE, DRIVE CHAIN		2	405A3-MG2-003	CHAIN SET, DRIVE (520VS-104CE)	1	1	1	1				
• GUARD, DRIVE CHAIN			405A3-MG2-005	CHAIN SET, DRIVE (520S0-104LE)	1	1	1	1				
• GUARD, PILLION STEP		*	405A3-MG2-013	CHAIN SET, DRIVE (520VL-104LE)						1	1	AR,B,CM,E,ED,F
• GUARD, CHAIN												G,IT,SA,SD,U,2G
FORK ASSY., RR.	0.9											AR,B,CM,E,ED,F
SLIPPER, CHAIN	0.2	*	405A3-MG2-015	CHAIN SET, DRIVE (520S0-104LE)						1	1	AR,B,CM,E,ED,F
SLIDER, CHAIN	0.6	*										G,IT,SA,SD,U,2G
BEARING, RR. FORK PIVOT (ONE OR ALL)	1.0	*	405A3-MG2-890	CHAIN SET, DRIVE (520S0-102LE TAKASAGO)						1		SW
		3	40500-MG2-610	CASE COMP., DRIVE CHAIN	1				1			ED
					1					1		G,U,2G
		4	40510-MG2-000	CASE, DRIVE CHAIN	1	1	1	1	1	1		AR,B,CM,E,F,IT
												SA,SW
					1							SD
		5	40515-MG2-610	COVER, DRIVE CHAIN	1				1			ED
					1					1		ED,G
												U

K 15



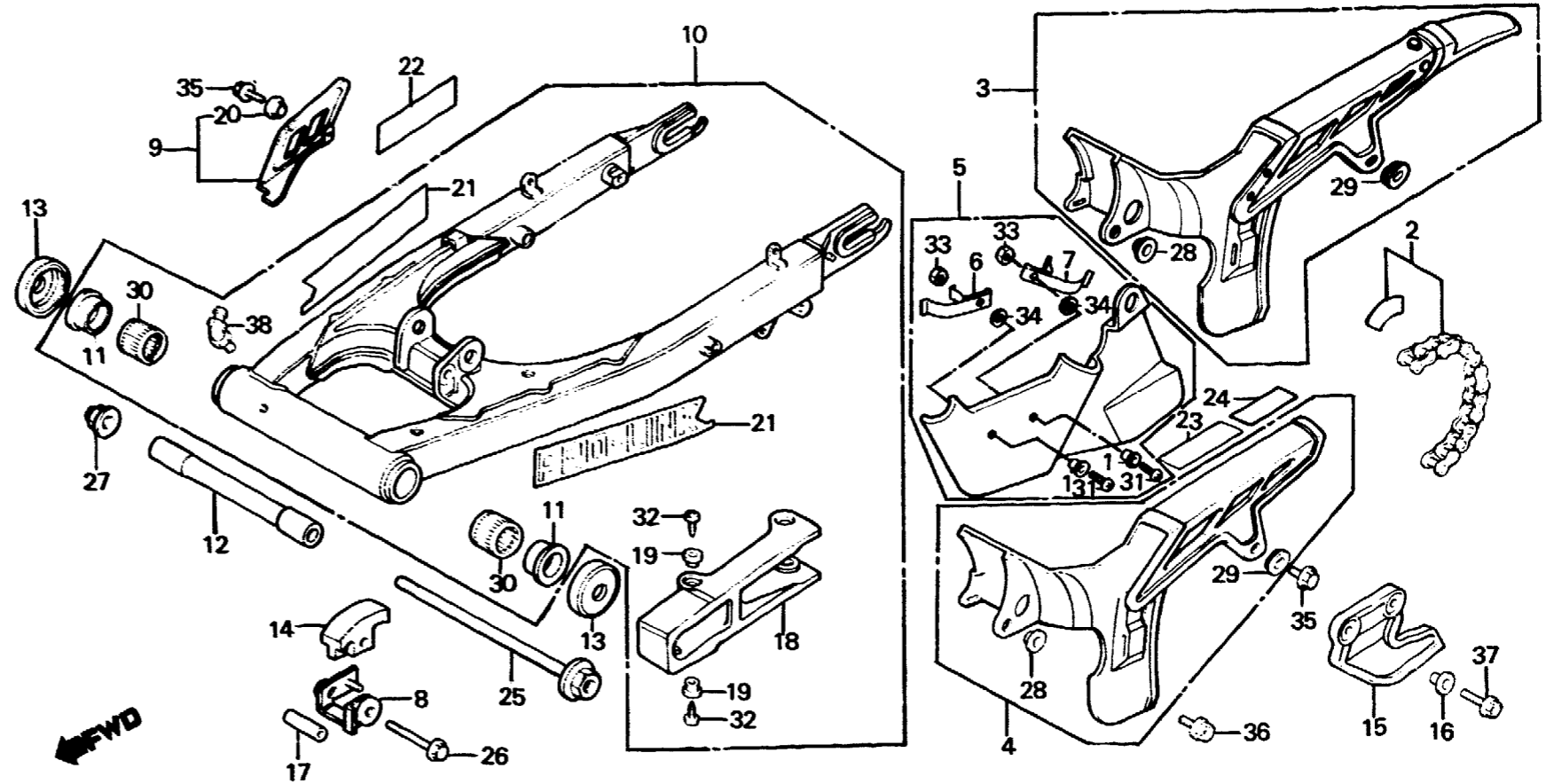
F-20

Rear fork • Chain case

Fourche arrière • Carter de chaîne

Hintere Schwinge • Kettenschutz

Horquilla trasera • Caja de cadena



BMG2-54

Service item	F.R.T.	Ref. No.	Part No.	Description	Reqd. No. XL600				Serial No.	Area code	
					Rd	Ld	RE	LE			Rf
		*	40515-MG2-710	COVER, DRIVE CHAIN					1	G,SD,2G	
		6	40517-MG2-610	CLIP A	1			1		ED	
					1				1	G,U,2G	
									1	SD	
		7	40518-MG2-610	CLIP B	1			1		ED	
					1				1	G,U,2G	
									1	SD	
		8	50143-MA0-770	STAY, TENSIONER	1	1	1	1	1	1	
		9	50720-MG2-000	GUARD, PILLION STEP	1	1	1	1	1	1	
		10	52100-MG2-000	FORK ASSY., RR.	1	1		1			AR,B,E,ED,F,G
											IT,SA,SD,U
			52100-MG2-670	FORK ASSY., RR.	1		1				SW
								1			CM
		*	52100-MG2-630	FORK ASSY., RR.					1		SW
		*	52100-MG2-700	FORK ASSY., RR.					1		SW
									1		AR,B,E,ED,F,G
		*	52100-MG2-890	FORK ASSY., RR.					1		IT,SA,SD,2G
		*	52100-MG2-900	FORK ASSY., RR.					1		CM
											U

K 16



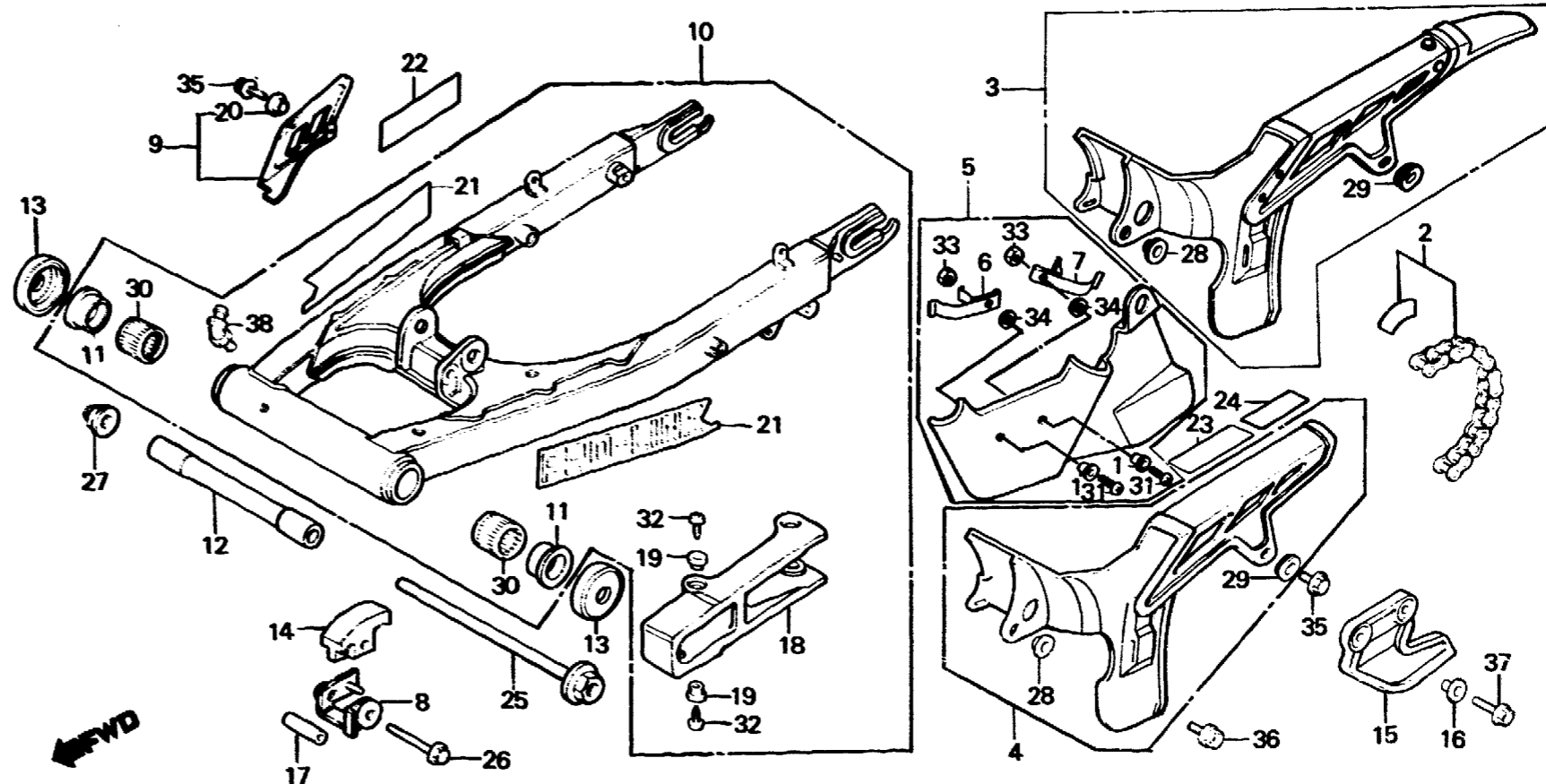
F-20

Rear fork • Chain case

Fourche arrière • Carter de chaîne

Hintere Schwinge • Kettenschutz

Horquilla trasera • Caja de cadena



BMG2-54

Service item	F.R.T.	Ref. No.	Part No.	Description	Reqd. No.						Serial No.	Area code	
					Rd	Ld	Re	Le	Rf	Lf			
		*	52100-MG2-970	FORK ASSY., RR.								1	
		11	52109-430-300	BUSH, PIVOT THRUST	2	2	2	2	2	2			
		12	52141-KF0-000	COLLAR, RR. FORK CENTER	1	1	1	1	1	1			
		13	52144-356-003	CAP, RR. FORK DUST SEAL	2	2	2	2	2	2			
			52144-356-005	CAP, RR. FORK DUST SEAL	2	2	2	2	2	2			
		14	52155-KF0-005	SLIPPER, CHAIN	1	1	1	1					
		*	52155-MG2-891	SLIPPER, CHAIN							1	1	
		15	52156-KB7-000	GUARD, CHAIN	1	1	1	1	1	1			
		16	52159-KB7-000	COLLAR, CHAIN GUARD	2	2	2	2	2	2			
		17	52159-169-000	COLLAR, CHAIN ROLLER	1	1	1	1	1	1			
		18	52170-KF0-003	SLIDER, CHAIN	1	1	1	1					
			52170-KF0-005	SLIDER, CHAIN	1	1	1	1					
		*	52170-KK0-771	SLIDER, CHAIN							1	1	
		19	52171-MC4-000	COLLAR, CHAIN SLIDER	4	4	4	4	4	4			
		20	61101-441-000	COLLAR, FR. FENDER SETTING	1	1	1	1	1	1			

L 1



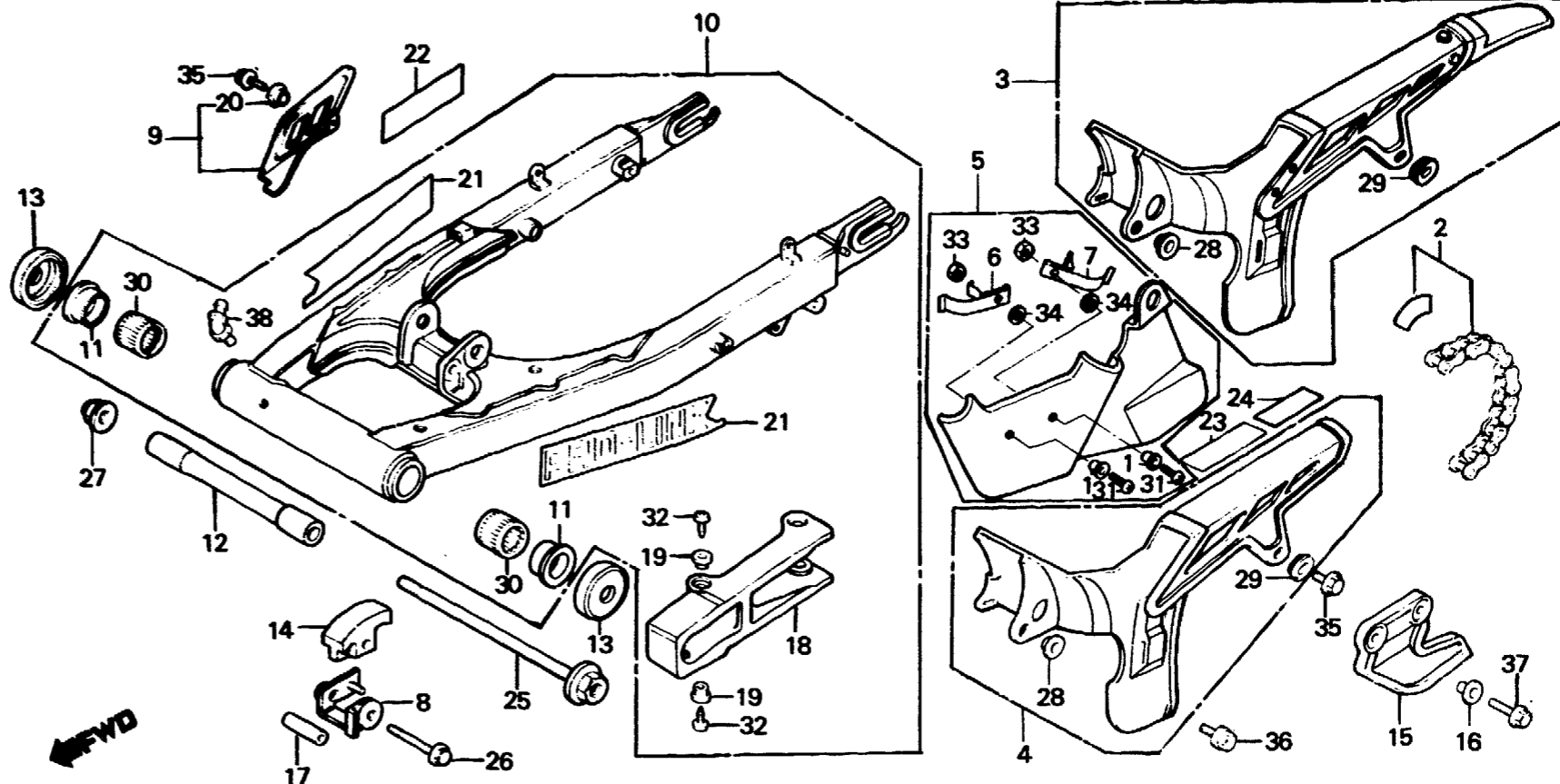
F-20

Rear fork • Chain case

Fourche arrière • Carter de chaîne

Hintere Schwinge • Kettenschutz

Horquilla trasera • Caja de cadena



BMG2-54

Service item	F.R.T.	Ref. No.	Part No.	Description	Reqd. No. XL600						Serial No.	Area code
					Rd	Ld	RE	LE	Rf	Lf		
		21	87121-GC4-300	EMBLEM, RR. FORK	2	2	2	2		2		
		*	87121-KK0-770	EMBLEM, RR. FORK						2		CM
		*	87121-MG2-700	EMBLEM, RR. FORK						2		AR,B,E,ED,F,G IT,SA,SD,SW,U 2G
		22	87504-028-670	MARK, MUFFLER CAUTION	1		1		1			CM
			87504-428-720	MARK, MUFFLER CAUTION (FRENCH)	1		1		1			CM
		23	87505-MG2-600	MARK, TIRE CAUTION	1	1		1	1	1		AR,B,E,ED,G,IT SD,SW,U,2G
			87505-MG2-620	MARK, TIRE CAUTION	1	1		1	1	1		F
			87505-MG2-660	MARK, TIRE CAUTION	1				1			SA
			87505-MG2-670	MARK, TIRE CAUTION	1		1		1			CM
			87505-MG2-720	MARK, TIRE CAUTION (FRENCH)	1		1		1			CM
		24	87509-MG2-600	MARK, DRIVE CHAIN CAUTION	1	1		1	1	1		AR,B,E,ED,G,IT SA,SD,SW,U,2G
			87509-MG2-620	MARK, DRIVE CHAIN CAUTION	1	1		1	1	1		F

L 2



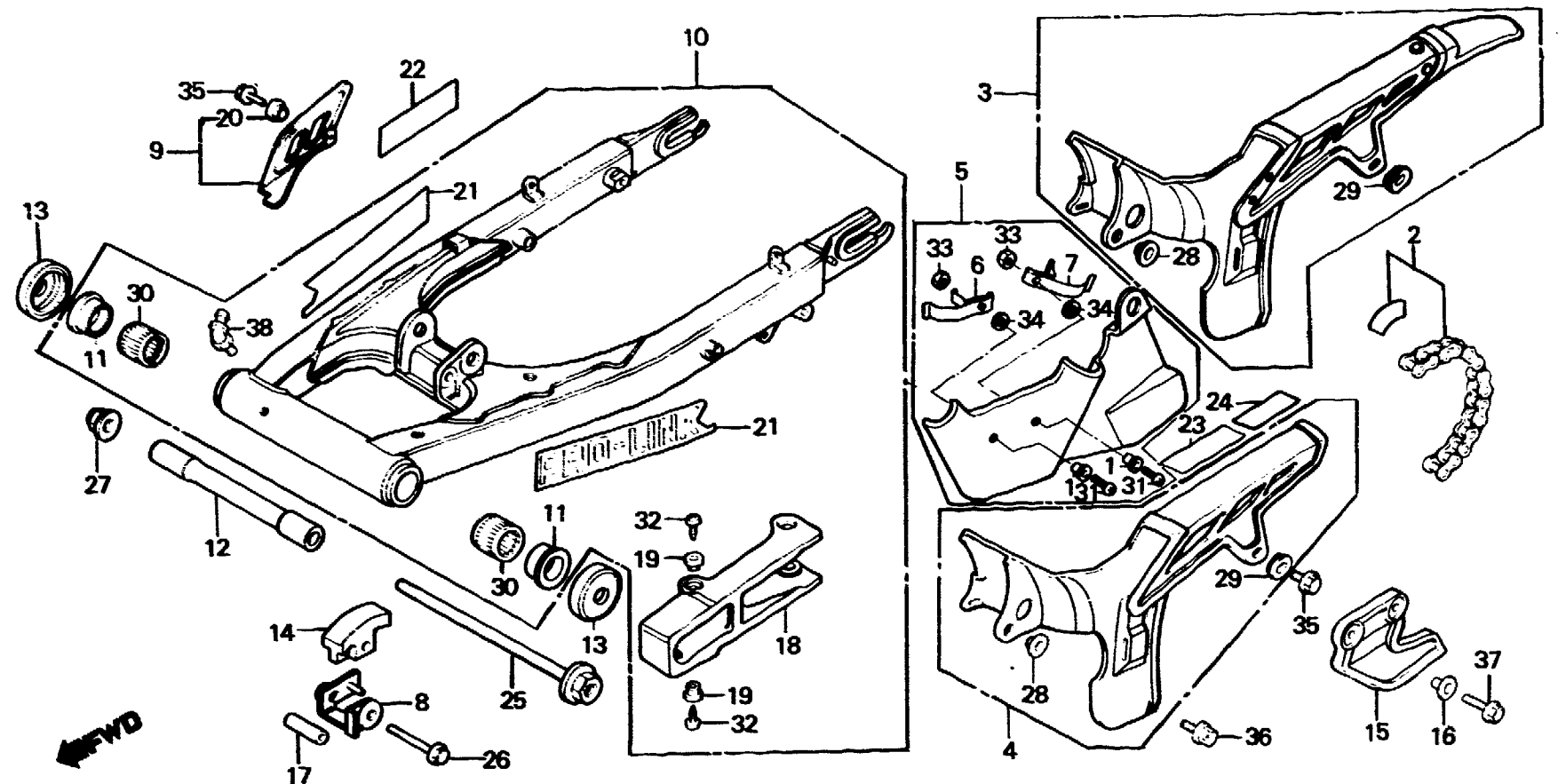
F-20

Rear fork • Chain case

Fourche arrière • Carter de chaîne

Hintere Schwinge • Kettenschutz

Horquilla trasera • Caja de cadena



BMG2-54

Service item	F.R.T.	Ref. No.	Part No.	Description	Reqd. No.						Serial No.	Area code
					Rd	Ld	RE	LE	Rf	Lf		
			87509-MG2-670	MARK, DRIVE CHAIN CAUTION	1		1			1		CM
			87509-MG2-720	MARK, DRIVE CHAIN CAUTION (FRENCH)	1		1			1		CM
		25	90121-MG3-000	BOLT, RR. FORK PIVOT	1	1	1	1	1	1		
		26	90176-MG3-000	BOLT, FLANGE, 6X45	1	1	1	1	1	1		
		27	90305-GE8-003	NUT, FLANGE, 14MM	1	1	1	1	1	1		
		28	90512-300-000	WASHER, 6X20	1	1	1	1	1	1		
		29	90513-323-000	WASHER, 6X9	1	1	1	1	1	1		
		30	91071-MA0-003	BEARING, RR. FORK PIVOT (TOYO)	2	2	2	2	2	2		
			91071-MA0-004	BEARING, RR. FORK PIVOT (TOMUSON)	2	2	2	2	2	2		
		31	93500-04012-0A	SCREW, PAN, 4X12	2			2				ED
					2				2		G,U,2G	
									2		SD	
		32	93901-26110	SCREW, TAPPING, 6X12	4	4	4	4	4	4		

L 3



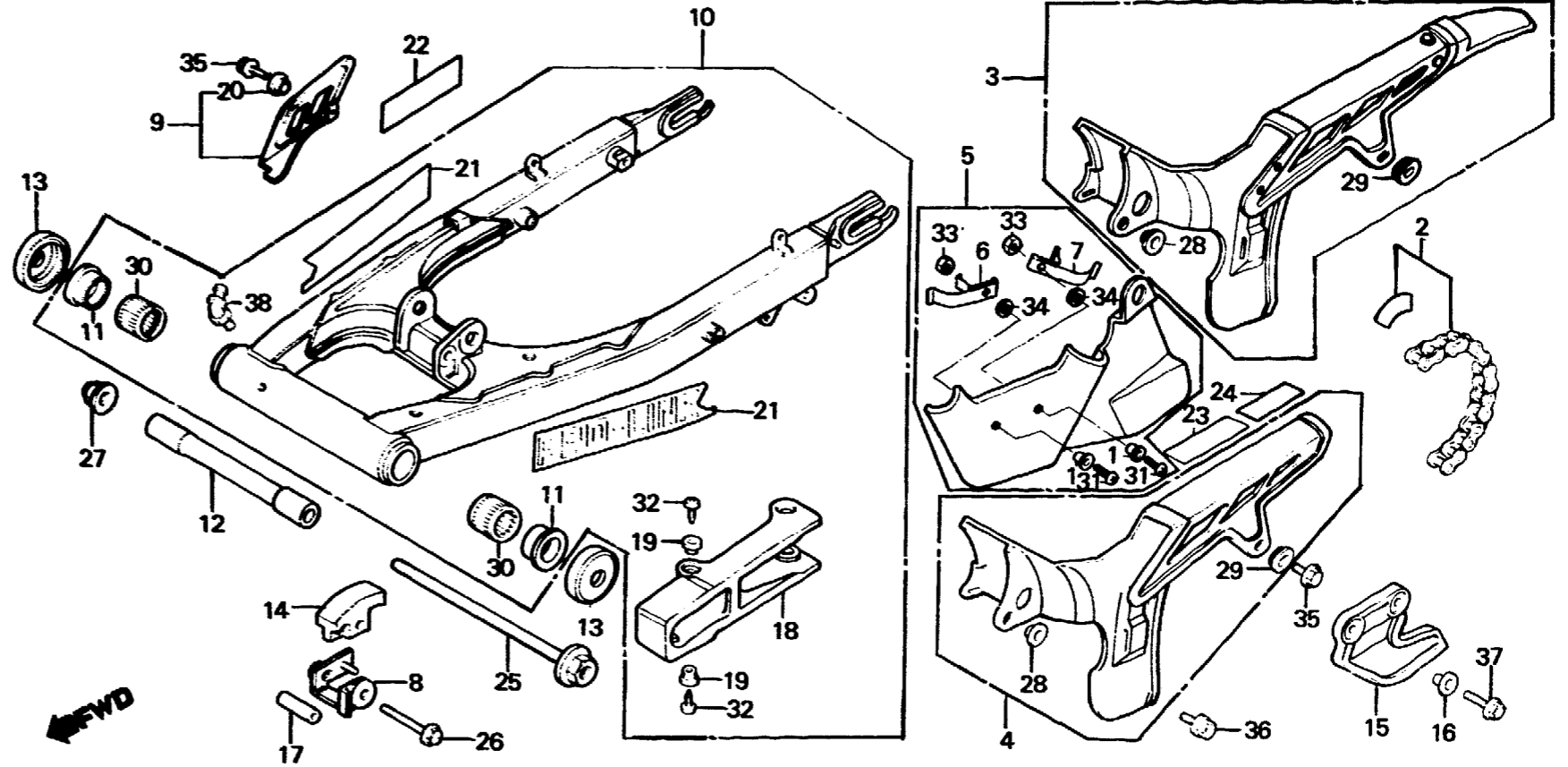
F-20

Rear fork • Chain case

Fourche arrière • Carter de chaîne

Hintere Schwinge • Kettenschutz

Horquilla trasera • Caja de cadena



BMG2-54

Service item	F.R.T.	Ref. No.	Part No.	Description	Reqd. No. XL600						Serial No.	Area code
					Rd	Ld	Re	Le	Rf	Lf		
		33	94001-04000-0S	NUT, HEX., 4MM	2			2				ED
					2				2			G,U,2G
										2		SD
		34	94101-04000	WASHER, PLAIN, 4MM	2			2				ED
					2				2			G,U,2G
										2		SD
		35	95700-06010-00	BOLT, FLANGE, 6X10	2	2						B,CM,E,ED,F,G
												IT,SA,SD,SW,U
			90170-MG3-000	BOLT, FLANGE, 6X10	2				2			AR,2G
							2	2	2	2		B,CM,E,ED,F,G
												IT,SA,SD,SW,U
		36	95700-06014-00	BOLT, FLANGE, 6X14	1	1						B,CM,E,ED,F,G
												IT,SA,SD,SW,U
			90172-MG3-000	BOLT, FLANGE, 6X16	1				1		1	AR,2G
							1	1	1	1		B,CM,E,ED,F,G
												IT,SA,SD,SW,U
		37	96000-06020-00	BOLT, FLANGE, 6X20	2	2	2	2	2	2		
		38	96201-80000	NIPPLE, GREASE, B.T6S	1	1	1	1	1	1		

L 4

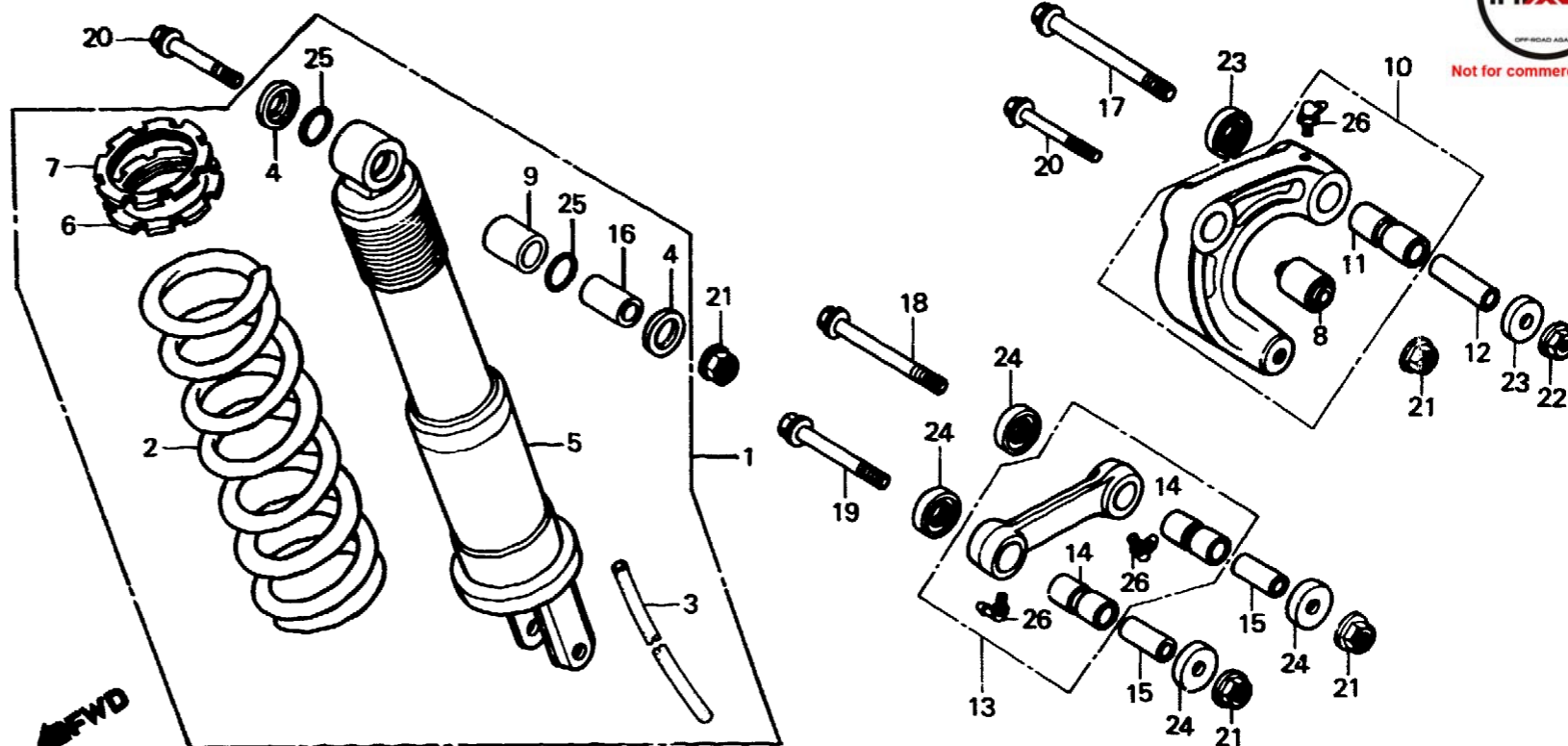
F-21

Rear cushion

Amortisseur arrière

Hinterer Stoßdämpfer

Amortiguador trasero



BMG2-37

Service item	F.R.T.	Ref. No.	Part No.	Description	Reqd. No. XL600						Serial No.	Area code
					Rd	Ld	RE	LE	Rf	Lf		
CUSHION ASSY., RR.	0.7	1	52400-MG2-003ZA	CUSHION ASSY., RR. *R-110*	1	1	1					
• ARM ASSY., CUSHION			52400-MG2-003ZB	CUSHION ASSY., RR. *R-119*				1		1		
• SPRING, RR. CUSHION	0.9	*	52400-MG2-003ZC	CUSHION ASSY., RR. *B-106*							1	CM
• DAMPER COMP., RR.		*	52400-MG2-003ZD	CUSHION ASSY., RR. *R-134*							1	AR,B,E,ED,F,G
BUSH, DAMPER LOWER	0.8											IT,SA,SD,SW,U
• BUSH, DAMPER UPPER												2G
• BUSH, CUSHION ARM												
• ROD ASSY., CUSHION CONNECTING	0.3	2	52401-MG2-003ZA	SPRING, RR. CUSHION *R-110*	1	1	1					
BUSH, CUSHION ARM			52401-MG2-003ZB	SPRING, RR. CUSHION *R-119*				1		1		
• BUSH, CUSHION CONNECTING ROD	0.4	*	52401-MG2-003ZC	SPRING, RR. CUSHION *B-106*							1	CM
COLLAR, DAMPER UPPER	0.5	*	52401-MG2-003ZD	SPRING, RR. CUSHION *R-134*							1	AR,B,E,ED,F,G
			3	52405-KB7-003	PIPE, DRAIN	1	1	1	1	1	1	
			4	52406-KB7-003	CAP, DUST SEAL	2	2	2	2	2	2	
			5	52410-MG2-003	DAMPER COMP., RR.	1	1	1	1	1	1	

L 5

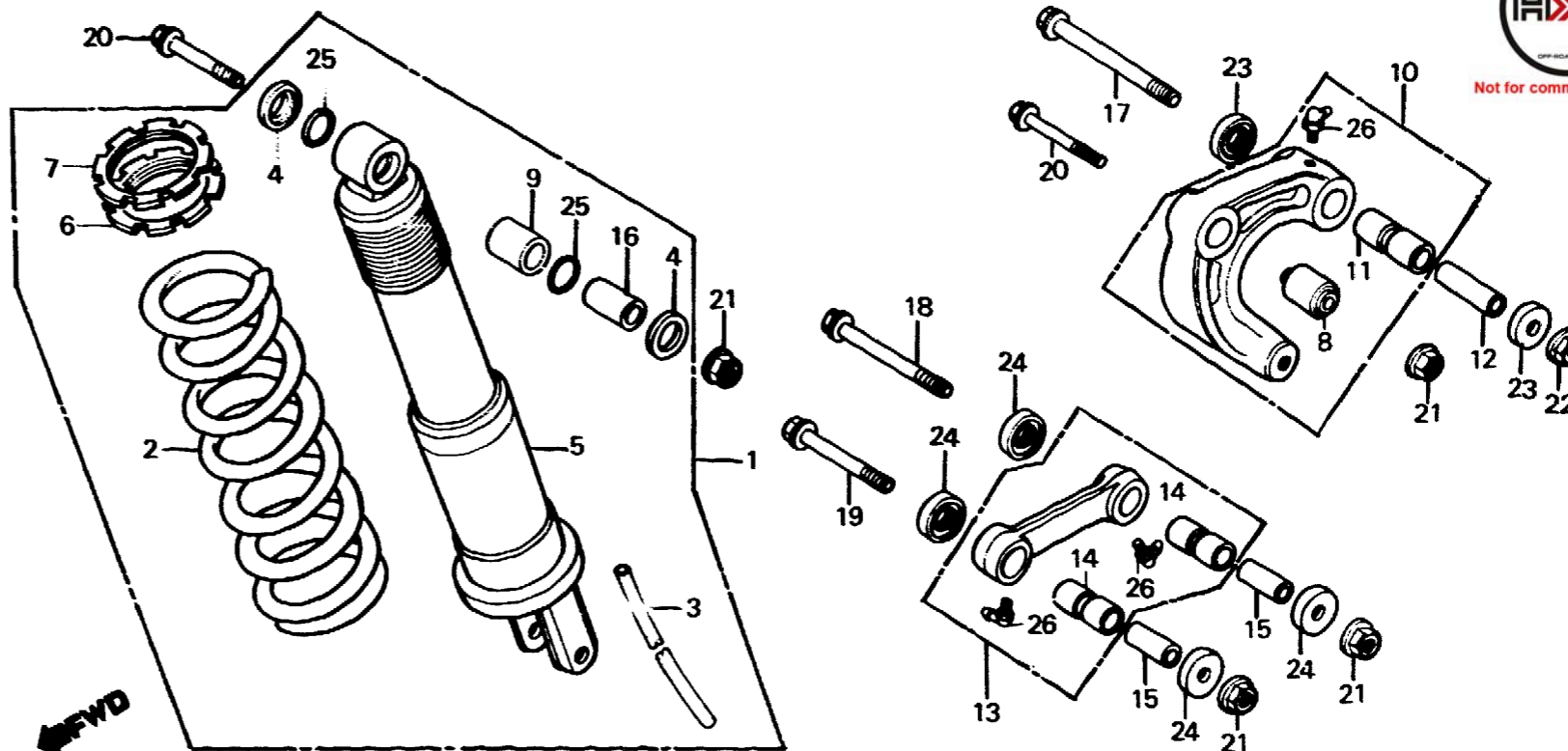
F-21

Rear cushion

Amortisseur arrière

Hinterer Stoßdämpfer

Amortiguador trasero



BMG2-37

Service item	F.R.T.	Ref. No.	Part No.	Description	Reqd. No. XL600						Serial No.	Area code
					Rd	Ld	Re	Le	Rf	Lf		
		6	52422-MA0-003	ADJUSTER, SPRING	1	1	1	1	1	1		
		7	52423-MA0-003	NUT, ADJUSTER	1	1	1	1	1	1		
		8	52451-MA0-000	BUSH, DAMPER LOWER	1	1	1	1	1	1		
		9	52452-KB7-003	BUSH, DAMPER UPPER	1	1	1	1	1	1		
		10	52460-KF0-000	ARM ASSY., CUSHION	1	1	1	1	1	1		
		11	52462-KF0-003	BUSH, CUSHION ARM	1	1	1	1	1	1		
		12	52463-KF0-000	COLLAR, CUSHION ARM PIVOT	1	1	1	1	1	1		
		13	52470-KF0-000	ROD ASSY., CUSHION CONNECTING	1	1						B,CM,E,ED,F,G IT,SA,SD,SW,U
			52470-KF0-010	ROD ASSY., CUSHION CONNECTING	1				1			AR,2G B,CM,E,ED,F,G IT,SA,SD,SW,U
		14	52472-MA0-013	BUSH, CUSHION CONNECTING ROD	2	2	2	2	2	2		
		15	52473-MA0-010	COLLAR, CONNECTING ROD PIVOT	2	2	2	2	2	2		
		16	52486-KB7-003	COLLAR, DAMPER UPPER	1	1	1	1	1	1		