

2-16

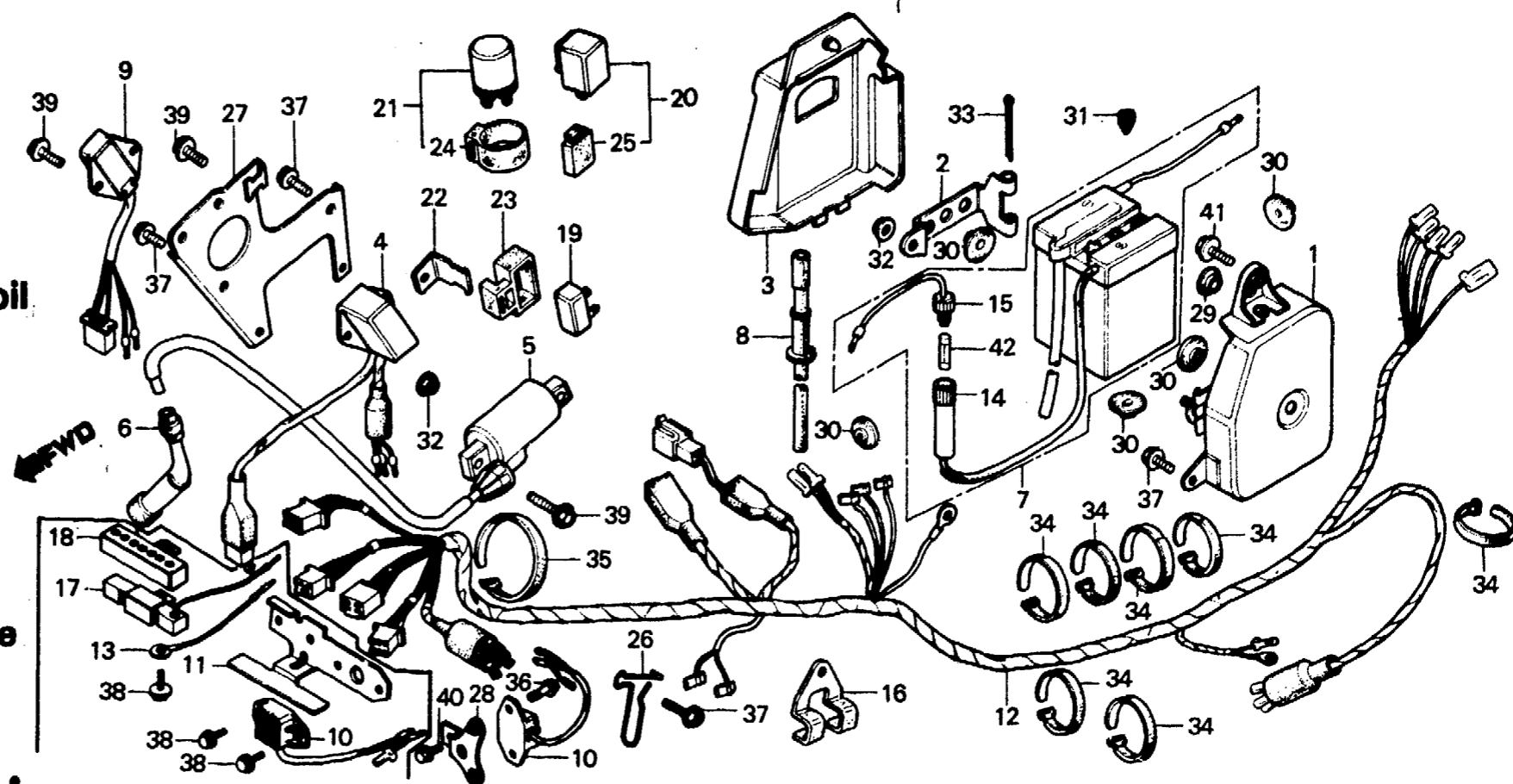
F-24

**Wire harness • C.D.I. unit • Ignition coil
(XL250S•Sz•SA•SB)**

**Faisceau électrique • Unité de C.D.I. •
Bobine d'allumage
(XL250S•Sz•SA•SB)**

**Kabelbaum • C.D.I. Einheit • Zündspule
(XL250S•Sz•SA•SB)**

**Equipo de alambre • Unidad de C.D.I. •
Bobina de encendido (XL250S•Sz•SA•SB)**



B428-54C

Service item	F.R.T.	Ref. No.	Part No.	Description	Reqd. No.					Serial No.	Area code
					S	Sz	SA	Sb	Rc		
TRAY, BATTERY	0.2	1	17232-428-000	TRAY, BATTERY	1	1	1				
•C.D.I. UNIT			17232-428-730	TRAY, BATTERY							1
•COIL ASSY., IGNITION		2	17233-428-000	HINGE, BATTERY BOX	1	1	1	1			
•REGULATOR COMP.		3	17234-428-000	COVER, BATTERY	1	1	1	1			
•RESISTOR ASSY.		4	30400-428-003	C.D.I. UNIT	1	1	1	1			
•RELAY ASSY., WINKER		5	30500-428-003	COIL ASSY., IGNITION	1	1	1	1			
COVER, BATTERY	0.1										
•BATTERY, 6N4	1.0	6	30700-405-153	CAP ASSY. A, NOISE SUPPRESSOR	1	1	1	1			
HARNESS, WIRE		7	31500-428-721	BATTERY, 6N4	1					5024188	DK,DM,E,ED,F,G,SA,SW U CM
					1	1				5200940	CM
			31500-428-722	BATTERY, 6N4	1		1			5024189	DK,DM,E,ED,F,G,SA,SW U B,DK,DM,E,ED,F1,F2,G1 G2,SA,SD,SW,U
								1		5200941	CM
			31500-437-751	BATTERY (6N4)							1
		8	31502-437-710	TUBE, BATTERY BREATHER							1

2-17

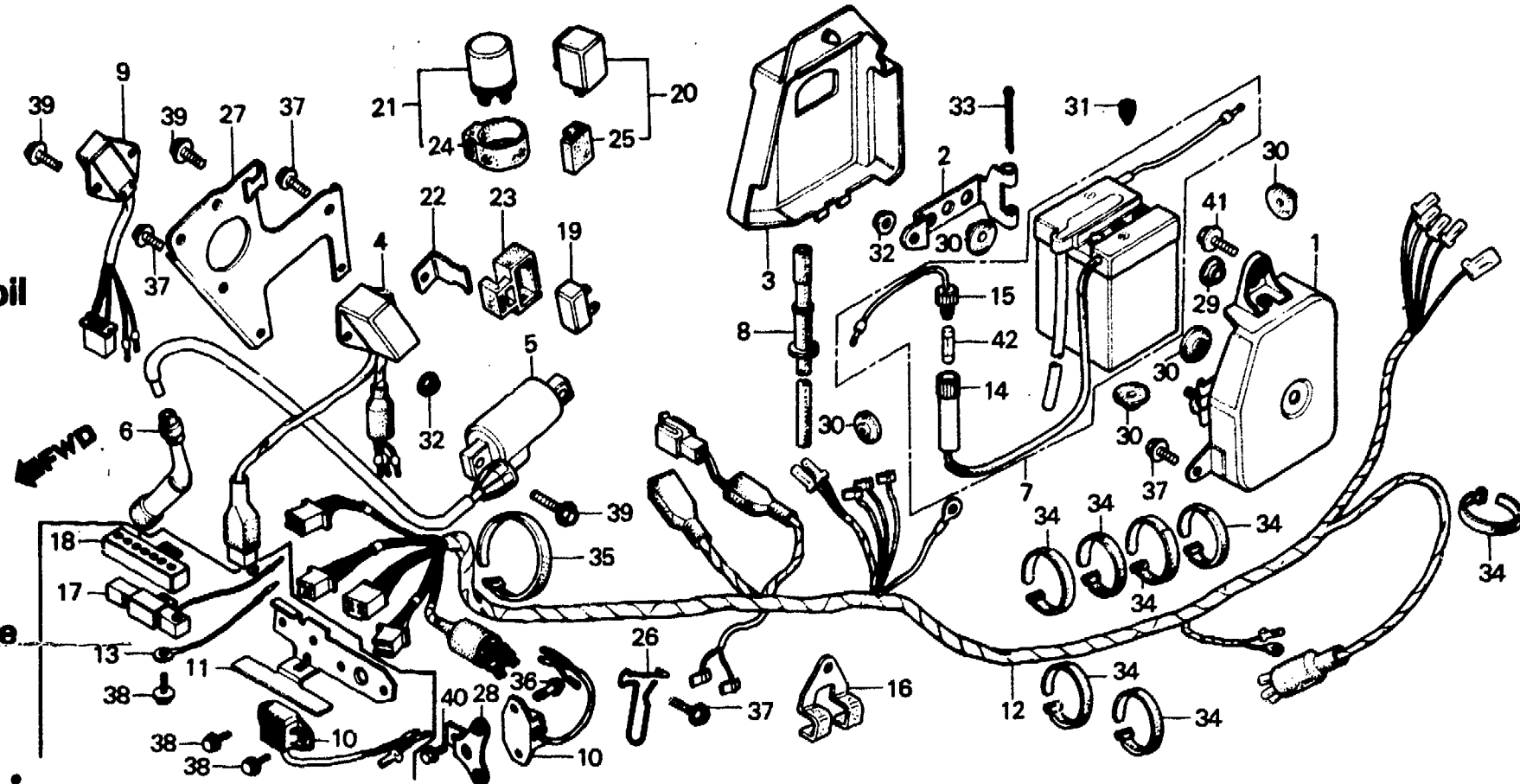
F-24

**Wire harness • C.D.I. unit • Ignition coil
(XL250S•Sz•SA•SB)**

**Faisceau électrique • Unité de C.D.I. •
Bobine d'allumage
(XL250S•Sz•SA•SB)**

**Kabelbaum • C.D.I. Einheit • Zündspule
(XL250S•Sz•SA•SB)**

**Equipo de alambre • Unidad de C.D.I. •
Bobina de encendido (XL250S•Sz•SA•SB)**



B428-54C

Service item	F.R.T.	Ref. No.	Part No.	Description	Reqd. No.					Serial No.	Area code
					S	Sz	SA	Sa	Rc		
		9	31600-428-003	REGULATOR COMP.	1	1	1	1			
		10	31600-428-630	REGULATOR COMP.				1			SD
		11	31601-428-630	STAY, REGULATOR				1			SD
		12	32100-428-000	HARNESS, WIRE	1		1				B,DK,DM,E,ED,F,F1,F2 G,G1,G2,SA,SD,SW,U
			32100-428-830	HARNESS, WIRE	1	1	1	1			CM B,DK,DM,E,ED,F1,F2,G1 G2,SA,SD,SW,U
		13	32102-428-630	CORD, REGULATOR EARTH				1			SD
		14	32106-041-008	CONNECTOR A, FUSE (YUASA)	1	1					
		15	32112-041-008	CONNECTOR B, FUSE (YUASA)	1	1	1	1			
		16	32812-413-000	CLIP A, WIRE HARNESS					1		B,DK,DM,E,ED,F1,F2,G1 G2,SA,SD,SW,U
		17	35400-428-631	RESISTOR ASSY.					1		SD
		18	35401-424-631	COVER, RESISTOR					1		SD

2-18

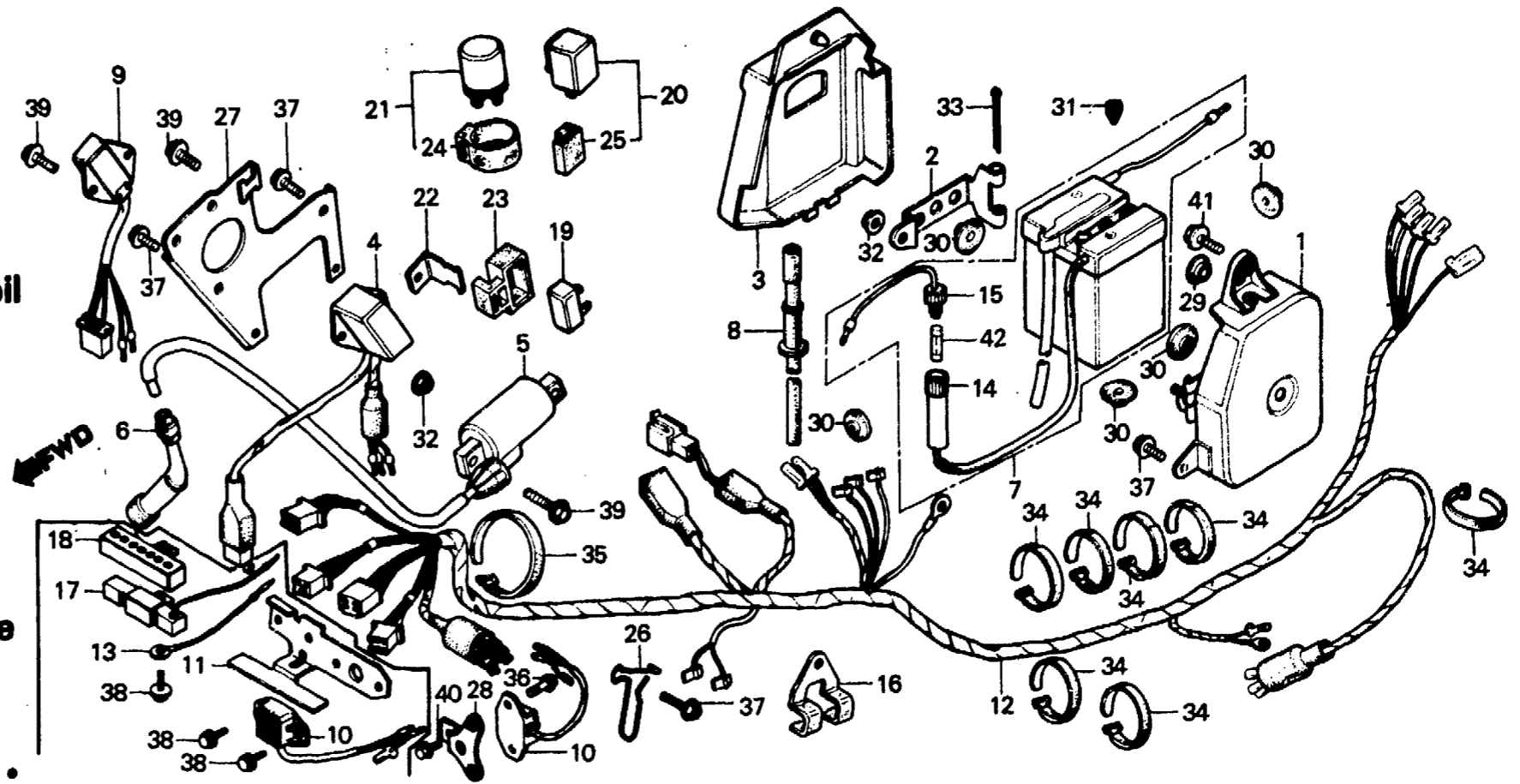
F-24

**Wire harness • C.D.I. unit • Ignition coil
(XL250S•SZ•SA•SB)**

**Faisceau électrique • Unité de C.D.I. •
Bobine d'allumage
(XL250S•SZ•SA•SB)**

**Kabelbaum • C.D.I. Einheit • Zündspule
(XL250S•SZ•SA•SB)**

**Equipo de alambre • Unidad de C.D.I. •
Bobina de encendido (XL250S•SZ•SA•SB)**



B428-54C

Service item	F.R.T.	Ref. No.	Part No.	Description	Reqd. No. XL250					Serial No.	Area code
					S	Sz	SA	Sb	Rc		
		19	38300-089-671	RELAY COMP., WINKER (LOCAL PROCUREMENT PART)	1						CM
					1					5020519	DK,DM,SA
						1					5103081
			38300-428-671	RELAY ASSY., WINKER (ND)			1	1			DK,DM,SA
		20	38300-151-611	RELAY ASSY., WINKER	1		1	1			CM
											G,G1,G2
		21	38300-151-750	RELAY ASSY., WINKER	1		1	1			B,E,ED,F,F1,F2,SD,SW
			38300-428-004	RELAY ASSY., WINKER	1	1				5103082	
					1		1				DK,DM,SA,U
								1			DK,DM,SA,U
		22	38301-365-670	STAY, WINKER RELAY	1						CM
					1					5020519	DK,DM,SA
						1					5103081
							1				DK,DM,SA
								1			DK,DM,SA
		23	38306-107-670	SUSPENSION, WINKER RELAY	1						CM
					1					5020519	DK,DM,SA
						1					5103081
							1	1			DK,DM,SA

2-19

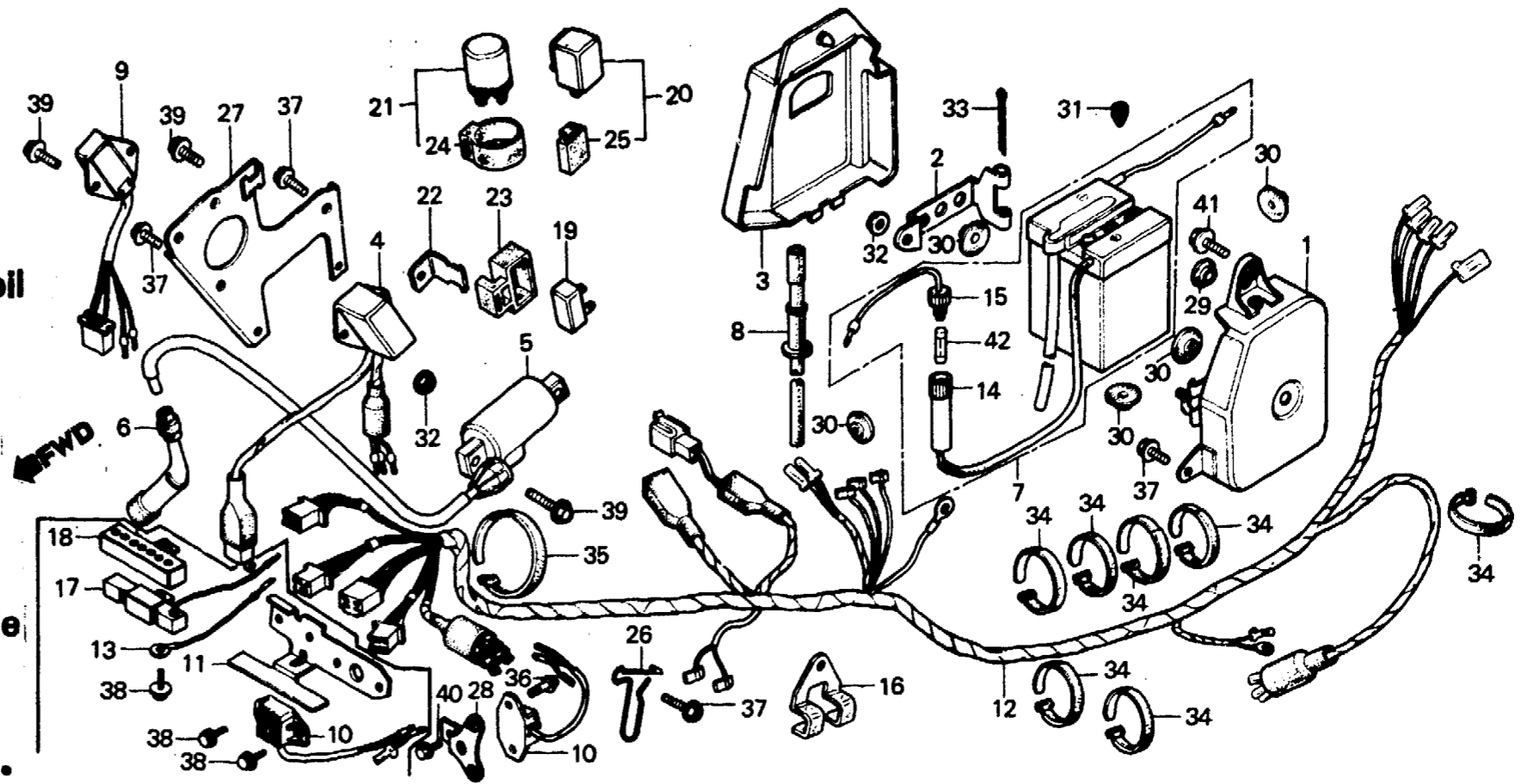
F-24

**Wire harness • C.D.I. unit • Ignition coil
(XL250S•Sz•SA•SB)**

**Faisceau électrique • Unité de C.D.I. •
Bobine d'allumage
(XL250S•Sz•SA•SB)**

**Kabelbaum • C.D.I. Einheit • Zündspule
(XL250S•Sz•SA•SB)**

**Equipo de alambre • Unidad de C.D.I. •
Bobina de encendido (XL250S•Sz•SA•SB)**



B428-54C

Service item	F.R.T.	Ref. No.	Part No.	Description	Reqd. No. XL250					Serial No.	Area code
					S	Sz	SA	Sb	Rc		
		24	38306-292-000	SUSPENSION, WINKER RELAY	1		1	1			B,DK,DM,E,ED,F,F1,F2 SA,SD,SW,U
		25	38306-405-612	SUSPENSION, WINKER RELAY (ND)	1		1	1		5103082	CM G,G1,G2
		26	45464-428-610	CLIP, WIRE	1	1	1	1			
		27	50300-428-000	PLATE, ELECTRIC BASE	1	1	1	1			
		28	61311-435-890	STAY, REGULATOR					1		SD
		29	83551-376-000	GROMMET, SIDE COVER	1	1	1	1			
		30	83618-323-000	RUBBER, BATTERY BOX	5	5	5	5			
		31	90899-283-000	PLUG, CONE	1	1	1	1			
		32	94050-06000	NUT, FLANGE, 6MM	3	3	3	3			
		33	94201-40500	PIN, SPLIT, 4.0X50	1	1	1	1			
		34	95014-61100	BAND A1, WIRE	6				7		B,DK,DM,E,ED,F,F1,F2 G,G1,G2,SA,SD,SW,U CM
		35	95014-61300	BAND A3, WIRE	6	6	7	7			
					1	1	1	1			

2-I 10

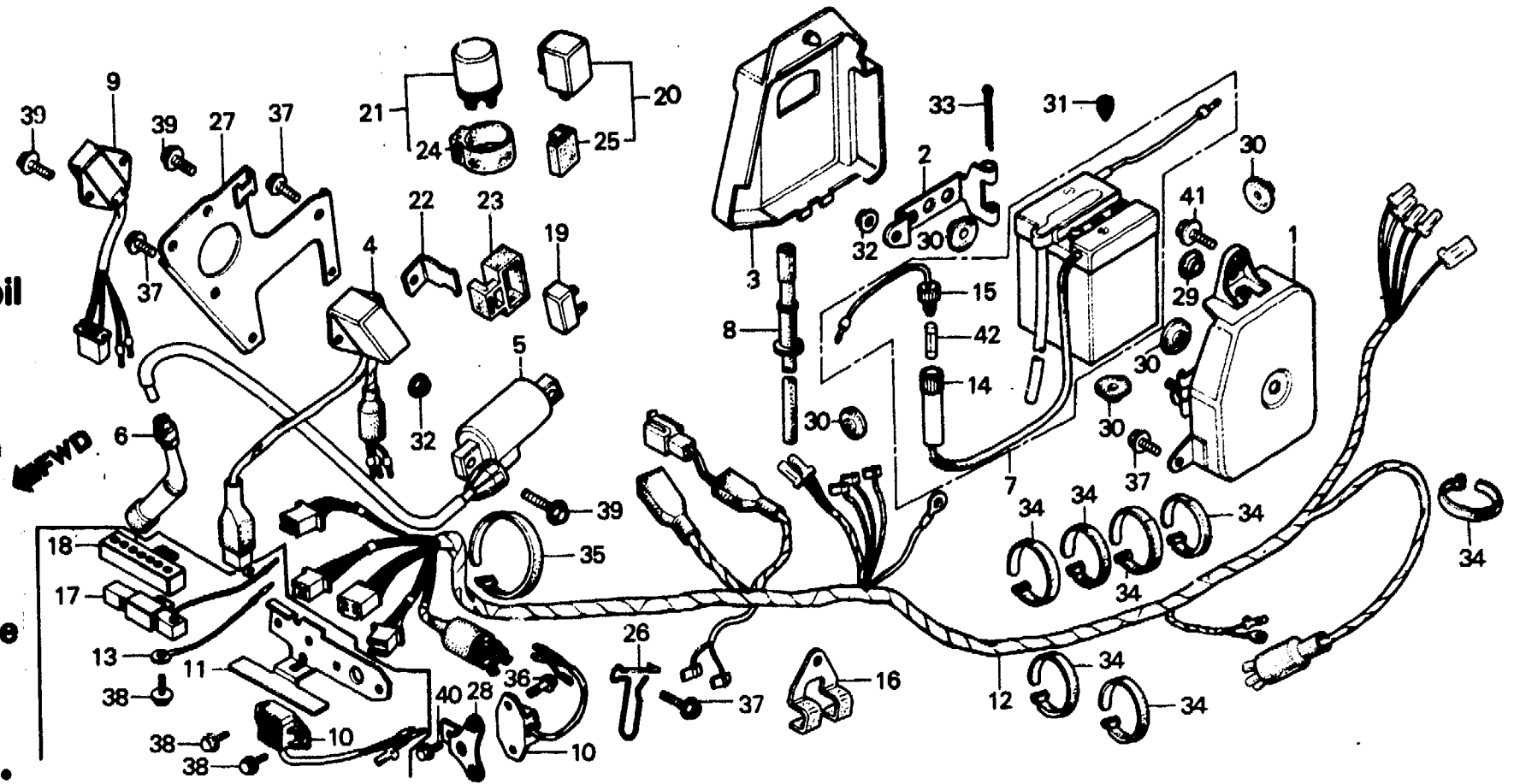
F-24

**Wire harness • C.D.I. unit • Ignition coil
(XL250S•Sz•SA•SB)**

**Faisceau électrique • Unité de C.D.I. •
Bobine d'allumage
(XL250S•Sz•SA•SB)**

**Kabelbaum • C.D.I. Einheit • Zündspule
(XL250S•Sz•SA•SB)**

**Equipo de alambre • Unidad de C.D.I. •
Bobina de encendido (XL250S•Sz•SA•SB)**



B428-54C

Service item	F.R.T.	Ref. No.	Part No.	Description	Reqd. No.					Serial No.	Area code
					S	Sz	SA	SB	Rc		
		36	95700-06010	BOLT, FLANGE, 6X10					2		SD
		37	95700-06012-00	BOLT, FLANGE, 6X12	4		4		5		B,DK,DM,E,ED,F,F1,F2 G,G1,G2,SA,SD,SW,U
		38	95700-06012-08	BOLT, FLANGE, 6X12	4	4	4		4		CM
		39	95700-06016-00	BOLT, FLANGE, 6X16	4	4	4		4		SD
					4		4		5		CM
											B,DK,DM,E,ED,F,F1,F2 G,G1,G2,SA,SD,SW,U
		40	95700-08012-00	BOLT, FLANGE, 8X12					1		SD
		41	95700-08014-00	BOLT, FLANGE, 8X14	1	1	1		1		
		42	98200-11000	FUSE A (10A)	1	1	1		1		

2-I11

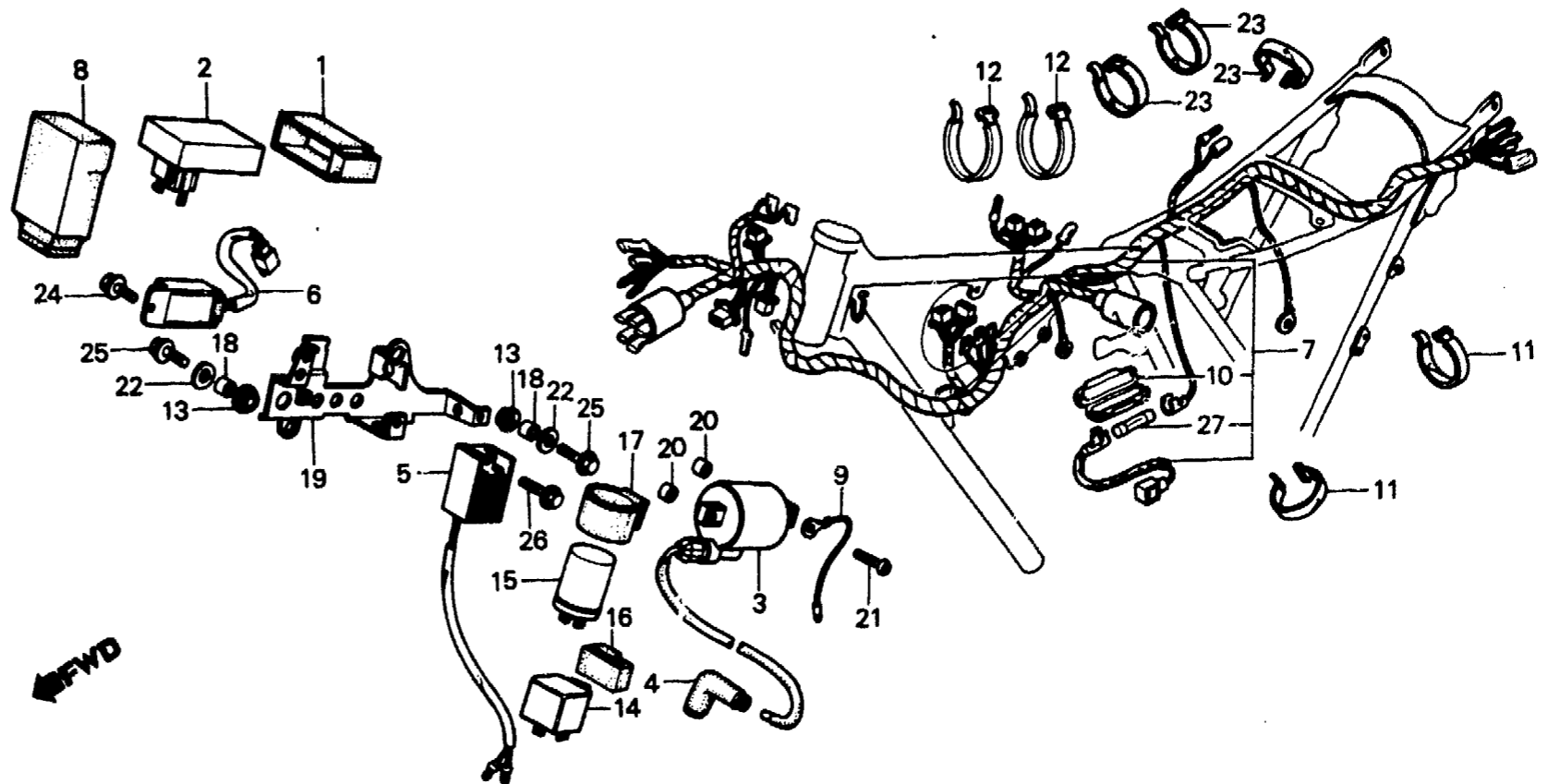
F-24-1

**Wire harness • C.D.I. unit • Ignition coil
(XL250Rc)**

**Faisceau électrique • Unité de C.D.I. •
Bobine d'allumage
(XL250Rc)**

**Kabelbaum • C.D.I. Einheit • Zündspule
(XL250Rc)**

**Equipo de alambre • Unidad de C.D.I. •
Bobina de encendido (XL250Rc)**



BKB7-21

Service item	F.R.T.	Ref. No.	Part No.	Description	Reqd. No.				Serial No.	Area code
					S	Sz	SA	Sb		
C.D.I. UNIT COMP.	0.3	1	30401-KB4-000	CUSHION, C.D.I. UNIT					1	
• COIL ASSY., IGNITION		2	30410-KB7-671	C.D.I. UNIT COMP. (SHINDENGEN)					1	
• REGULATOR COMP.		3	30500-KB7-003	COIL ASSY., IGNITION (TOYO)					1	
• RECTIFIER COMP., REGULATOR		4	30700-MC4-153	CAP ASSY., NOISE SUPPRESSOR					1	
HARNESS, WIRE	0.8	5	31400-KB7-008	REGULATOR COMP.					1	
RELAY COMP., WINKER	0.1	6	31600-KB7-008	RECTIFIER COMP., REGULATOR (SHINDENGEN)					1	
		7	32100-KB7-000	HARNESS, WIRE					1	B, DK, DM, E, ED, F1, F2, G1 G2, IT, SA, SD, SW, U CM
			32100-KB7-670	HARNESS, WIRE					1	
		8	32102-KB7-000	COVER, C.D.I. COUPLER					1	
		9	32111-KB7-000	SUB CORD A					1	
		10	32111-230-000	CASE, FUSE CONNECTOR					1	
		11	32161-MA0-000	BAND, WIRE					2	
		12	32161-399-000	BAND, WIRE					2	

2-I 12

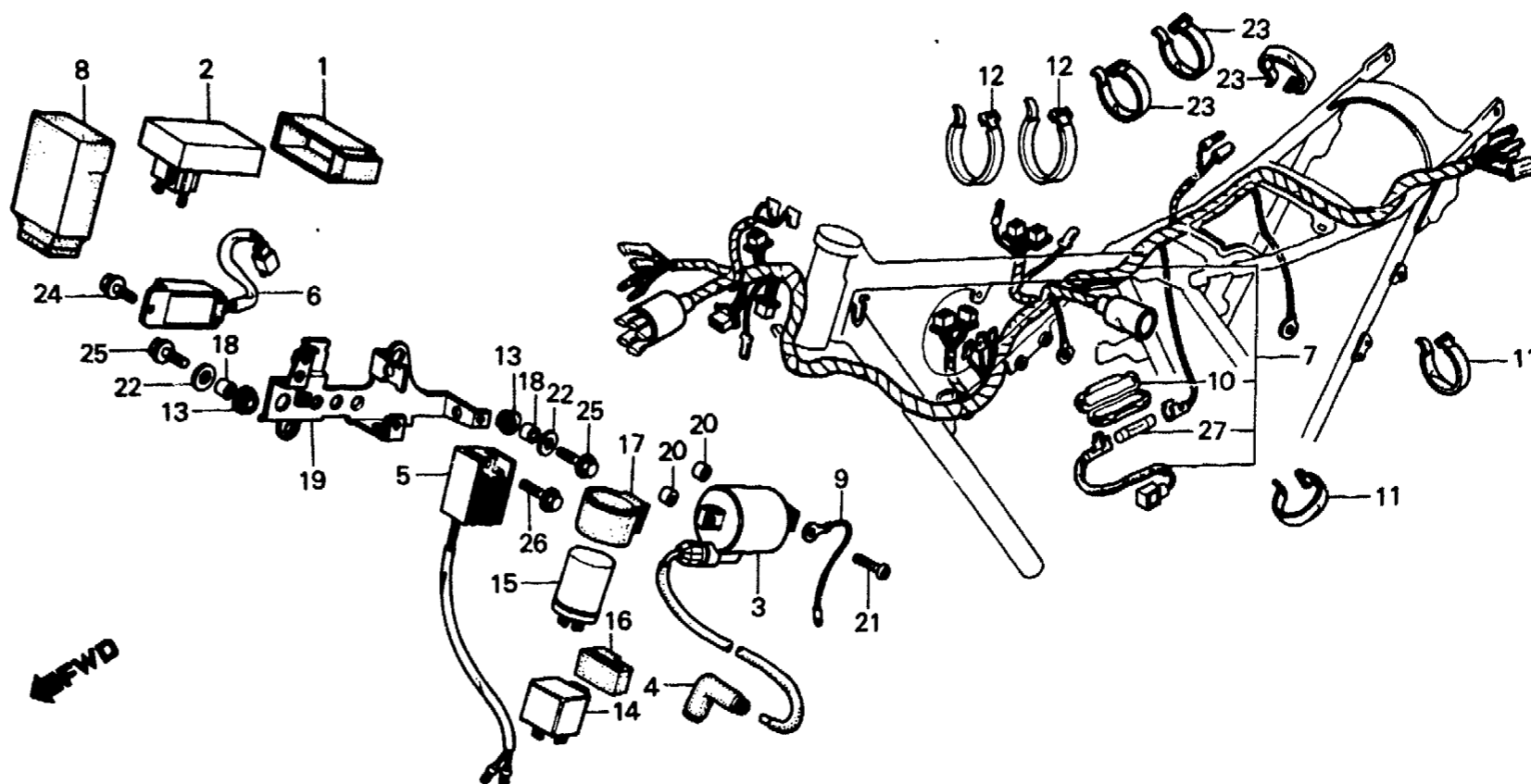
F-24-1

**Wire harness • C.D.I. unit • Ignition coil
(XL250Rc)**

**Faisceau électrique • Unité de C.D.I. •
Bobine d'allumage
(XL250Rc)**

**Kabelbaum • C.D.I. Einheit • Zündspule
(XL250Rc)**

**Equipo de alambre • Unidad de C.D.I. •
Bobina de encendido (XL250Rc)**



BKB7-21

Service item	F.R.T.	Ref. No.	Part No.	Description	Reqd. No.				Serial No.	Area code
					S	Sz	SA	Sb		
		13	32983-028-000	GROMMET, WIRE HARNESS					2	
		14	38301-404-611	RELAY COMP., WINKER (ND)					1	G1,G2
		15	38301-415-004	RELAY COMP., WINKER (MITSUBA)					1	B,CM,DK,DM,E,ED,F1,F2 IT,SA,SD,SW,U
		16	38306-MC4-610	SUSPENSION, WINKER RELAY					1	G1,G2
		17	38306-292-000	SUSPENSION, WINKER RELAY					1	B,CM,DK,DM,E,ED,F1,F2 IT,SA,SD,SW,U
		18	40515-413-000	COLLAR, CHAIN CASE					2	
		19	50300-KB7-000	PLATE, ELECTRIC BASE					1	
		20	90442-035-000	WASHER, SEALING, 6MM					2	
		21	93500-05016-0A	SCREW, PAN, 5X16					2	
		22	94101-06000	WASHER, PLAIN, 6MM					2	
		23	95014-61100	BAND A1, WIRE					6	
		24	95700-06012-00	BOLT, FLANGE, 6X12					1	
		25	95700-06016-00	BOLT, FLANGE, 6X16					2	
		26	95700-06028-00	BOLT, FLANGE, 6X28					1	

2-I 13

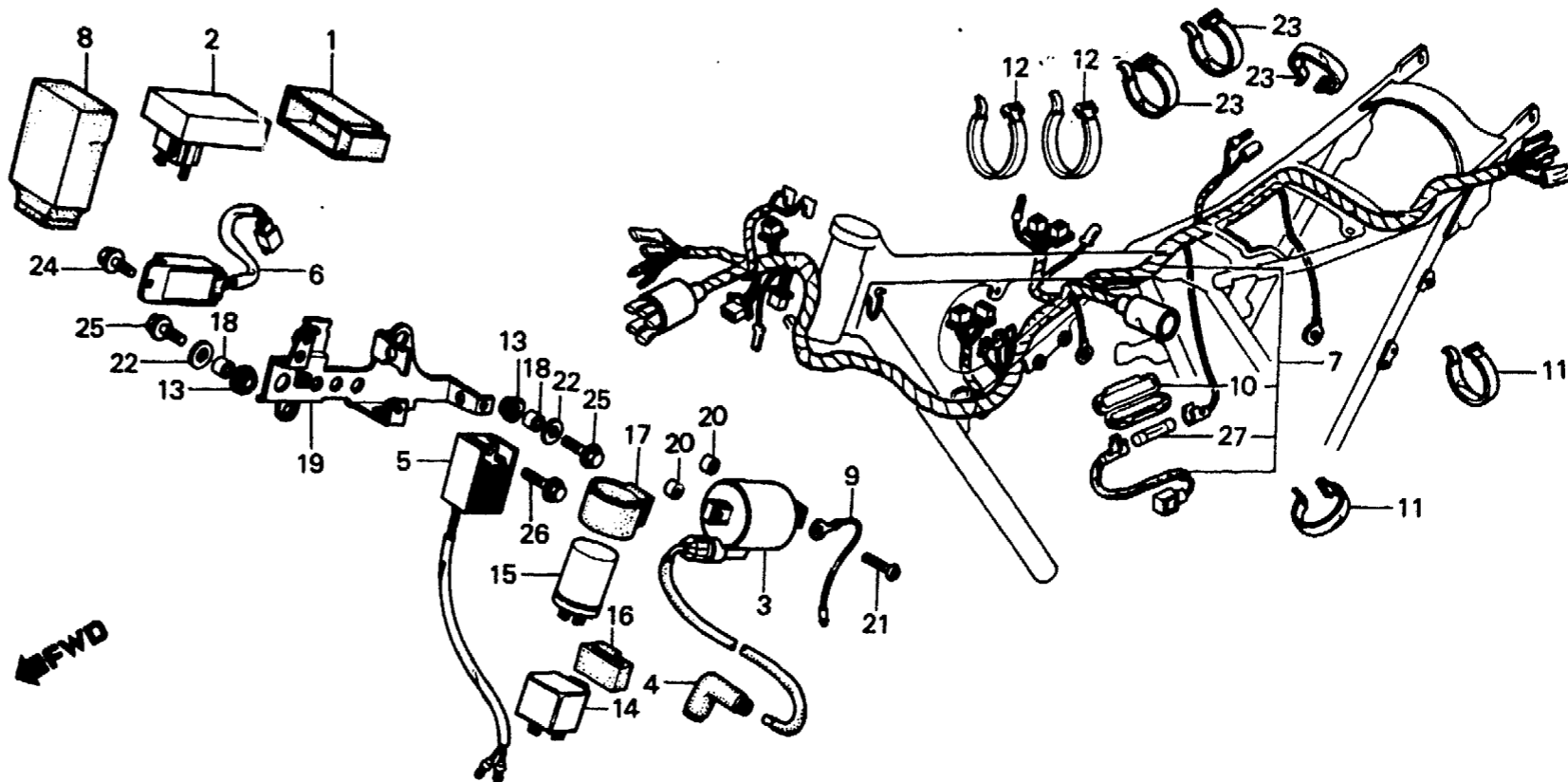
F-24-1

**Wire harness • C.D.I. unit • Ignition coil
(XL250Rc)**

**Faisceau électrique • Unité de C.D.I. •
Bobine d'allumage
(XL250Rc)**

**Kabelbaum • C.D.I. Einheit • Zündspule
(XL250Rc)**

**Equipo de alambre • Unidad de C.D.I. •
Bobina de encendido (XL250Rc)**



BKB7-21

Service item	F.R.T.	Ref. No.	Part No.	Description	Reqd. No.				Serial No.	Area code
					S	Sz	SA	Sb		
		27	98200-11000	FUSE A (10A)					1	

2-I 14

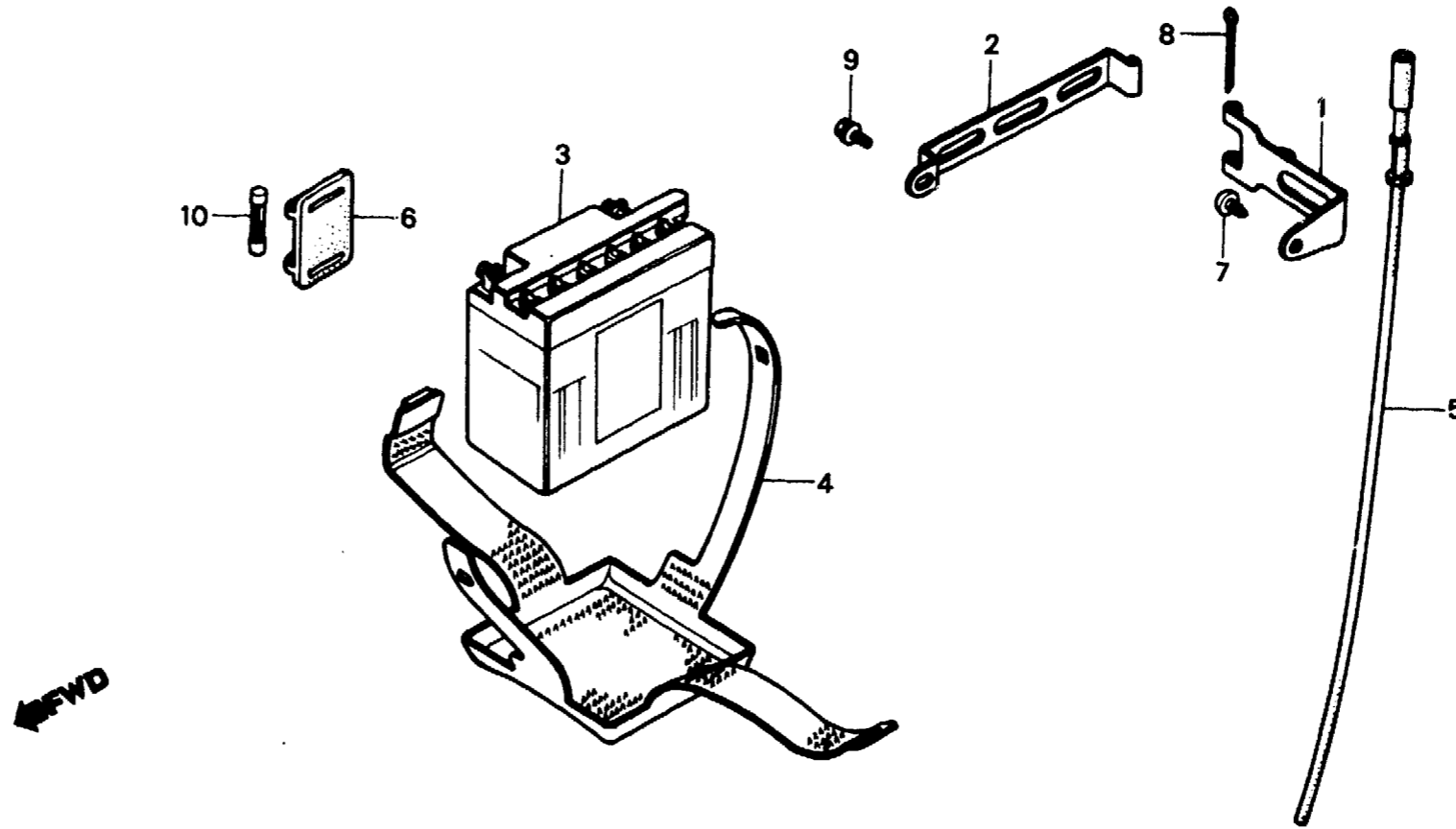
F-25

**Battery
(XL250Rc)**

**Batterie
(XL250Rc)**

**Batterie
(XL250Rc)**

**Batería
(XL250Rc)**



BKB7-22

Service item	F.R.T.	Ref. No.	Part No.	Description	Reqd. No.					Serial No.	Area code
					S	Sz	SA	Sa	Rc		
		1	17233-KB7-000	HINGE A, BATTERY						1	
		2	17234-KB7-000	HINGE B, BATTERY						1	
		3	31500-MC4-721	BATTERY ('B3L-A)						1	
		4	31502-KB7-003	BAND, BATTERY MOUNTING						1	
		5	31503-KB7-000	TUBE, BATTERY BREATHER						1	
		6	38205-115-000	CASE, FUSE						1	
		7	93903-36220	SCREW, TAPPING, 6X16						1	
		8	94201-03350	PIN, SPLIT, 3MM						1	
		9	95700-06010-18	BOLT, FLANGE, 6X10						1	
		10	98200-11000	FUSE A (10A)						1	

2-I 15

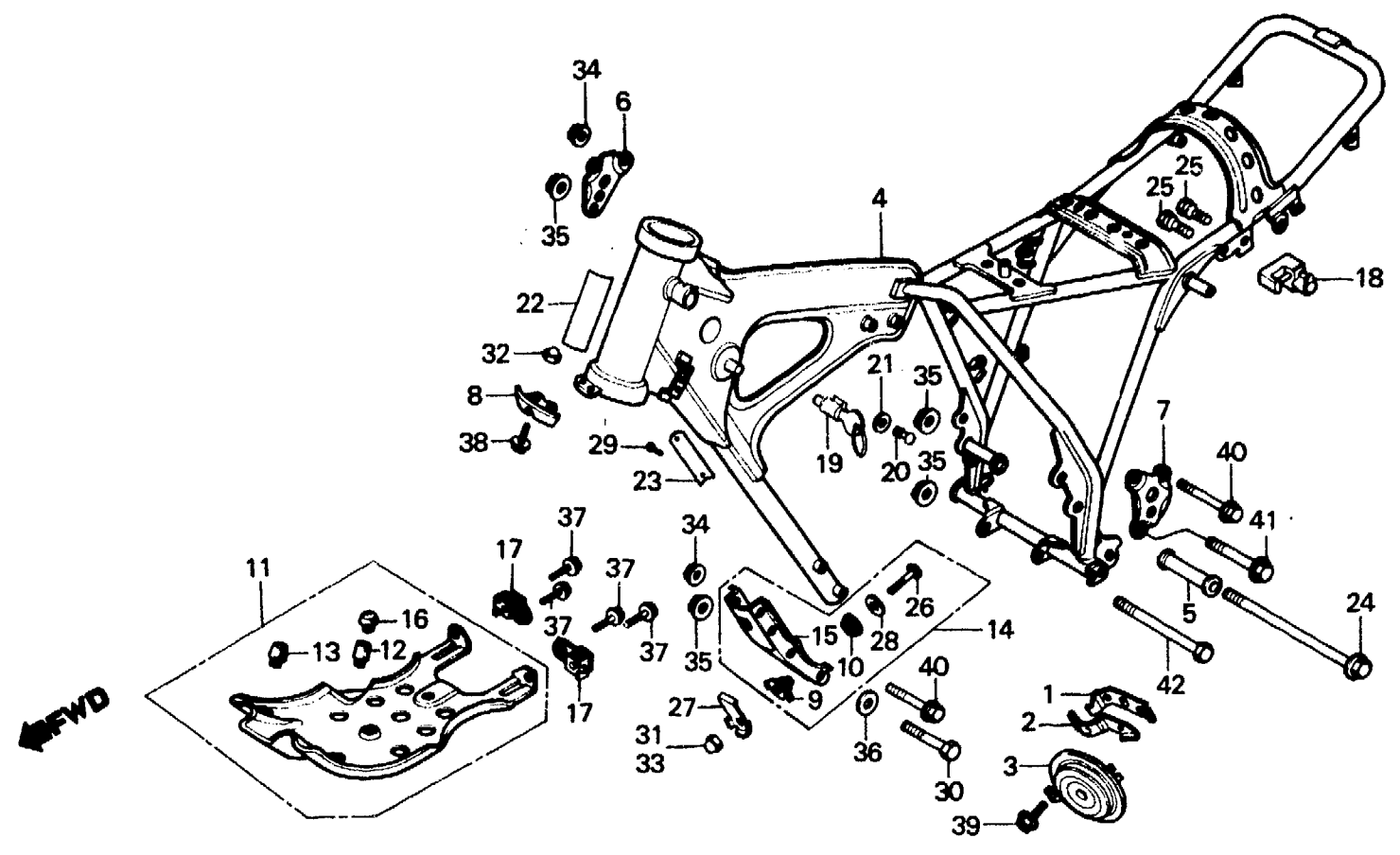
F-26

**Frame body
(XL250S·SZ·SA·SB)**

**Cadre
(XL250S·SZ·SA·SB)**

**Rahmen
(XL250S·SZ·SA·SB)**

**Cuerpo de cuadro
(XL250S·SZ·SA·SB)**



B428-55B

Service item	F.R.T.	Ref. No.	Part No.	Description	Reqd. No.					Serial No.	Area code
					S	Sz	SA	Sb	Rc		
HORN COMP.	0.1	1	38101-428-830	BAND A, HORN					1		B,DK,DM,E,ED,F1,F2,G1
LOCK COMP., STEERING HANDLE		2	38102-428-830	BAND B, HORN					1		G2,SA,SD,SW,U
BODY COMP., FRAME	*6.0	3	38110-437-941	HORN COMP.					1		B,DK,DM,E,ED,F1,F2,G1
PLATE, R. ENGINE HANGER UPPER (ONE OR ALL)	0.2	4	50100-428-610ZA	BODY COMP., FRAME *NH-1*	1						G2,SA,SD,SW,U
PLATE, SKID			50100-428-680ZA	BODY COMP., FRAME *NH-1*	1						B,DK,DM,E,ED,F1,F2,G1
HANGER, FR. ENGINE			50100-428-720ZA	BODY COMP., FRAME *NH-1*	1	1					G2,SA,SD,SW,U
HOLDER ASSY., HELMET	0.3		50100-428-890ZA	BODY COMP., FRAME *NH-1*				1	1		E,ED,F,G,SW
			50100-428-920ZA	BODY COMP., FRAME *NH-1*				1			DK,DM,SA
			50100-428-950ZA	BODY COMP., FRAME *NH-1*				1			CM,U
			50100-428-790ZA	BODY COMP., FRAME *NH-1*					1		CM
			50100-428-830ZA	BODY COMP., FRAME *NH-1*					1		U
			50100-428-950ZA	BODY COMP., FRAME *NH-1*					1		B,E,ED,F1,F2,G1,G2,SD
			50130-428-000	COLLAR, ENGINE HANGER	1	1	1	1			SW

1982.01.10

E

2-115

2-I 16

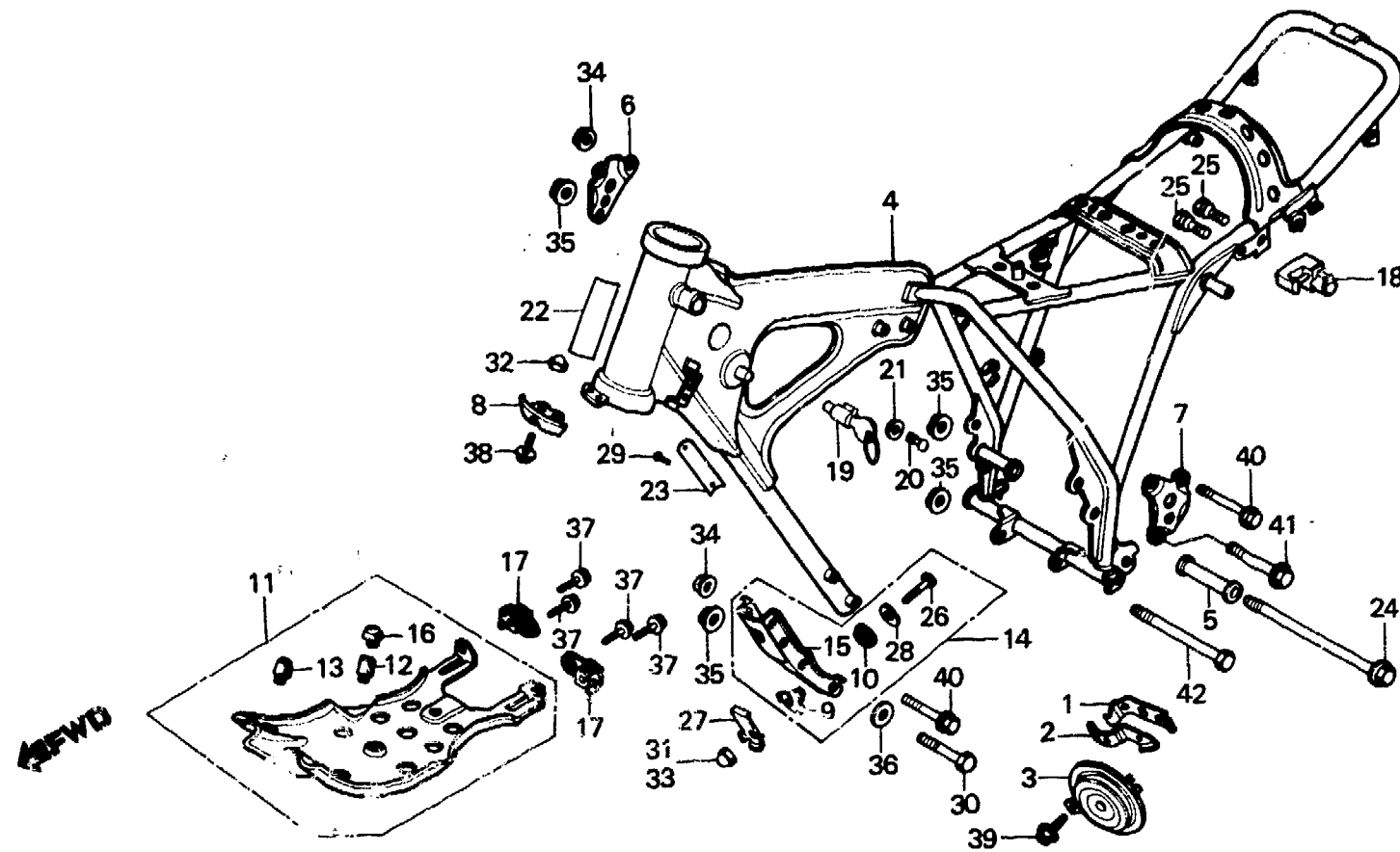
F-26

**Frame body
(XL250S·SZ·SA·SB)**

**Cadre
(XL250S·SZ·SA·SB)**

**Rahmen
(XL250S·SZ·SA·SB)**

**Cuerpo de cuadro
(XL250S·SZ·SA·SB)**



B428-55B

Service item	F.R.T.	Ref. No.	Part No.	Description	Reqd. No.					Serial No.	Area code
					S	Sz	SA	Sb	Rc		
		6	50138-428-000ZA	PLATE, R. ENGINE HANGER UPPER *NH-1*	1	1	1	1			
		7	50139-428-000ZA	PLATE, L. ENGINE HANGER UPPER *NH-1*	1	1	1	1			
		8	50141-428-000	STAY, HANDLE LOCK	1	1	1	1			CM,DK,DM,SA,U
		9	50325-428-000	MOUNT A, SKID	1	1					B,F,G
					1				1		CM,DK,DM,SA,U
					1					1	E,ED,F1,F2,G1,G2,SD
											SW
		10	50326-428-000	MOUNT B, SKID	1		1				B,F,G
					1	1					CM,DK,DM,SA,U
					1				1		E,ED,F1,F2,G1,G2,SD
											SW
		11	50351-428-000	PLATE, SKID	1		1				B,F,G
					1	1					CM,DK,DM,SA,U
					1				1		E,ED,F1,F2,G1,G2,SD
											SW

2-J1

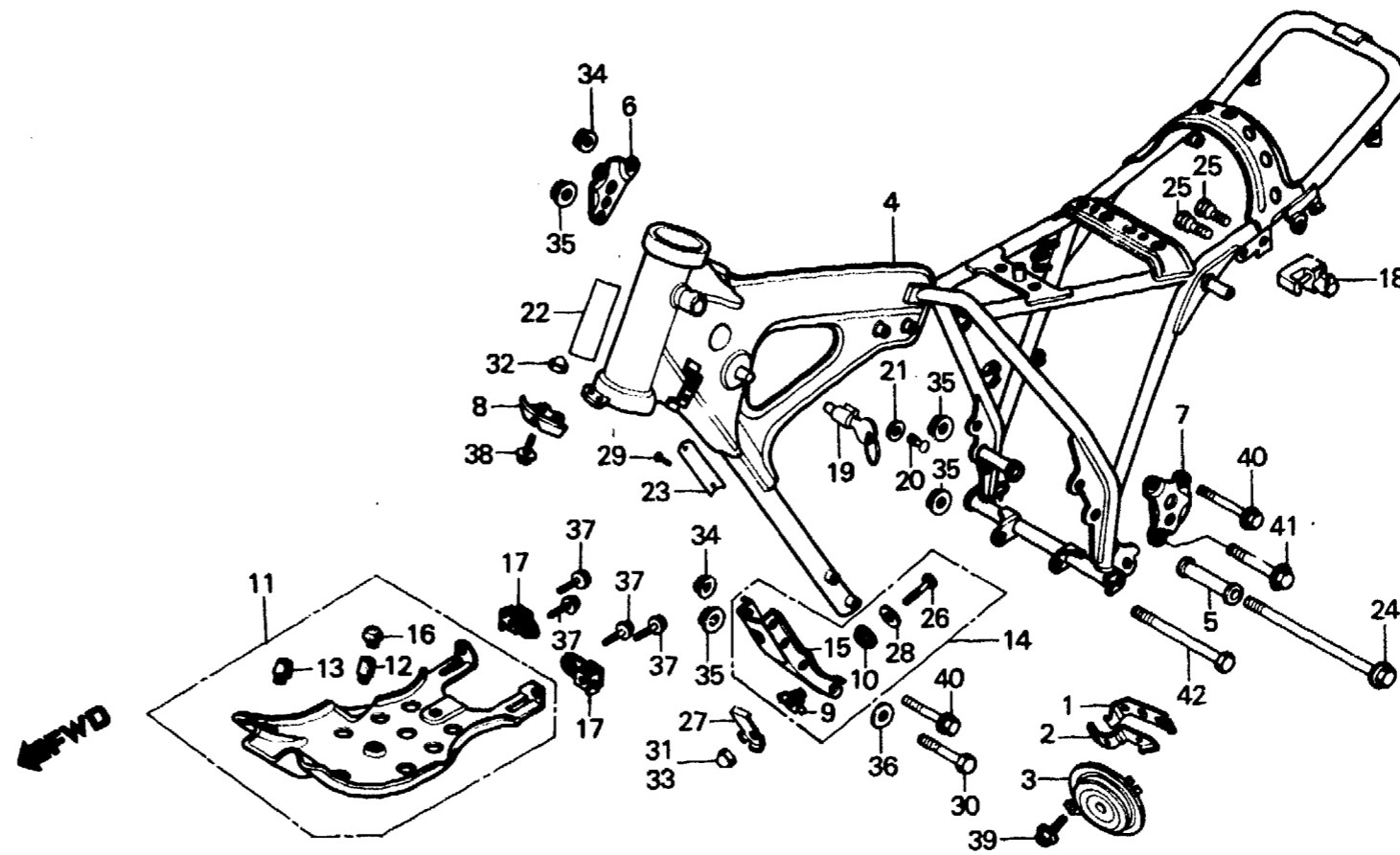
F-26

**Frame body
(XL250S·SZ·SA·SB)**

**Cadre
(XL250S·SZ·SA·SB)**

**Rahmen
(XL250S·SZ·SA·SB)**

**Cuerpo de cuadro
(XL250S·SZ·SA·SB)**



B428-55B

Service item	F.R.T.	Ref. No.	Part No.	Description	Reqd. No.					Serial No.	Area code
					S	Sz	SA	Sb	Rc		
			50351-428-871ZA	PLATE, SKID *NH-35M*			1	1			CM
							1				DK,DM,E,ED,F1,F2,G1
		12	50352-428-000	RUBBER A, STOPPER	2		2				G2,SA,SD,SW,U
					2	2	1	1			B,F,G
					2		1				CM
					2		1	2			DK,DM,SA,U
		13	50352-434-000	RUBBER A, STOPPER			1	1			E,ED,F1,F2,G1,G2,SD
							1				SW
							1	1			DK,DM,U
							1				E,ED,F1,F2,G1,G2,SA
											SD,SW
		14	50353-428-000ZA	HANGER, FR. ENGINE *NH-1*	1	1	1	1			CM
					1		1				DK,DM,E,ED,SA,SW,U
					1		1				B,F,G
								1			B,DK,DM,E,ED,F1,F2,G1
		15	50353-434-000ZA	HANGER, FR. ENGINE *NH-1*			1				G2,SA,SD,SW,U
							1				DK,DM,E,ED,F1,F2,G1
								1	1		G2,SA,SD,SW,U
											CM
		16	50354-428-000	RUBBER B, STOPPER	2	2	2	2			

2-J2

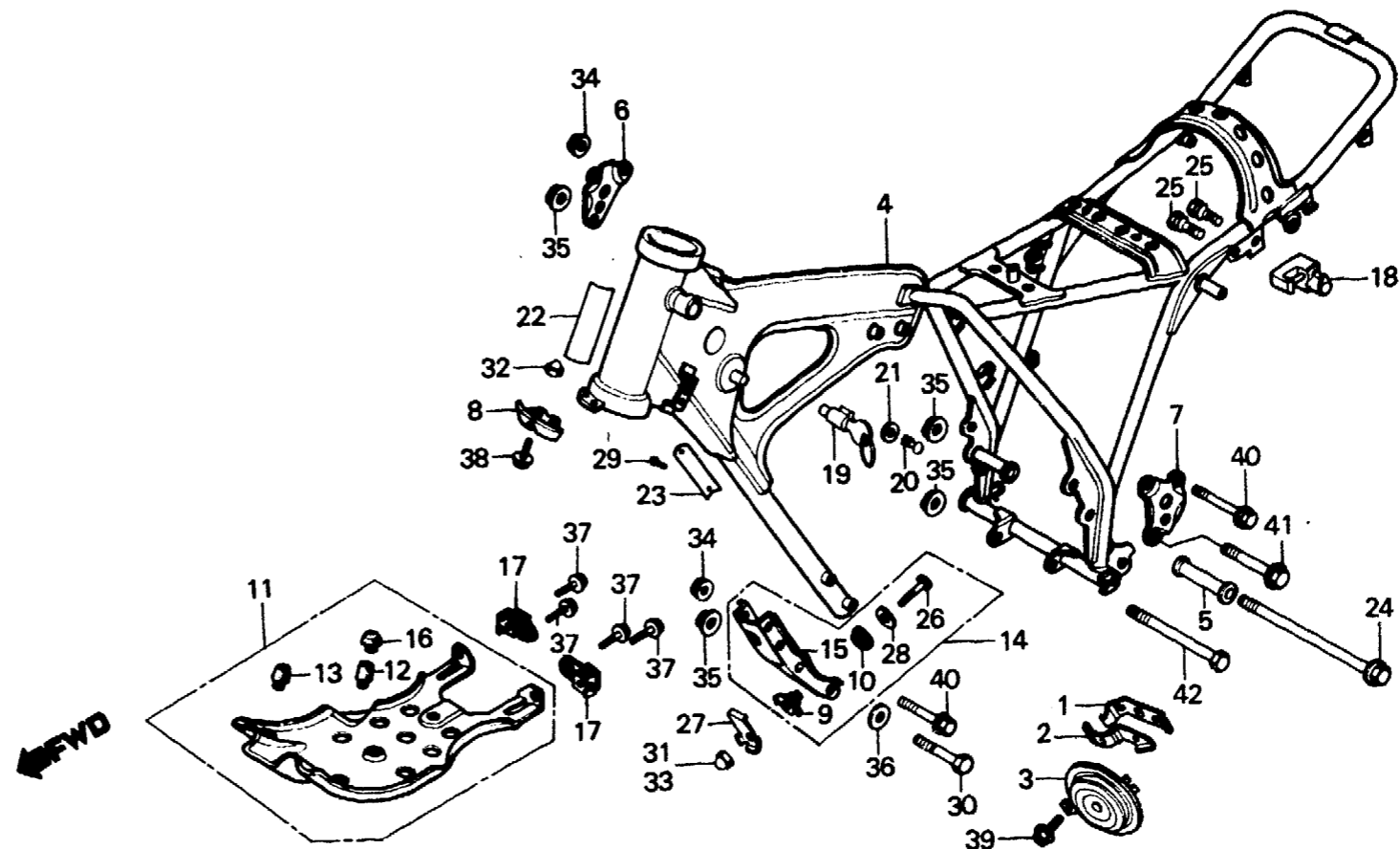
F-26

**Frame body
(XL250S·Sz·SA·SB)**

**Cadre
(XL250S·Sz·SA·SB)**

**Rahmen
(XL250S·Sz·SA·SB)**

**Cuerpo de cuadro
(XL250S·Sz·SA·SB)**



B428-55B

Service item	F.R.T.	Ref. No.	Part No.	Description	Reqd. No. XL250					Serial No.	Area code
					S	Sz	SA	SB	Rc		
		17	50361-428-600	RUBBER, SKID PLATE MOUNTING	2		2	2			B, F, G CM, DK, DM, SA, U E, ED, F1, F2, G1, G2, SD SW
		18	50710-382-671	HOLDER ASSY., HELMET	1	1	1	1			B, E, ED, F, F1, F2, G, G1 G2, SD, SW
		19	53600-404-610	LOCK COMP., STEERING HANDLE	1		1	1			DK, DM, SA, U
		20	53603-051-000	RIVET, 4.1MM	1		1	1			B, E, ED, F, F1, F2, G, G1 G2, SD, SW DK, DM, SA, U
		21	53604-098-940	WASHER, 4.5MM	1		1	1			B, E, ED, F, F1, F2, G, G1 G2, SD, SW DK, DM, SA, U
		22	87125-041-680	PLATE, NAME	1		1	1			DK, DM, SA
		23	87501-428-610	PLATE, REGISTERED NUMBER	1		1	1			B, E, ED, F, G, G1, G2 SW F1, F2, SD
		24	90104-428-000	BOLT, FLANGE, 10X238	1	1	1	1			
		25	90107-428-000	BOLT B, SPECIAL, 6MM	2	2	2	2			

2-J3

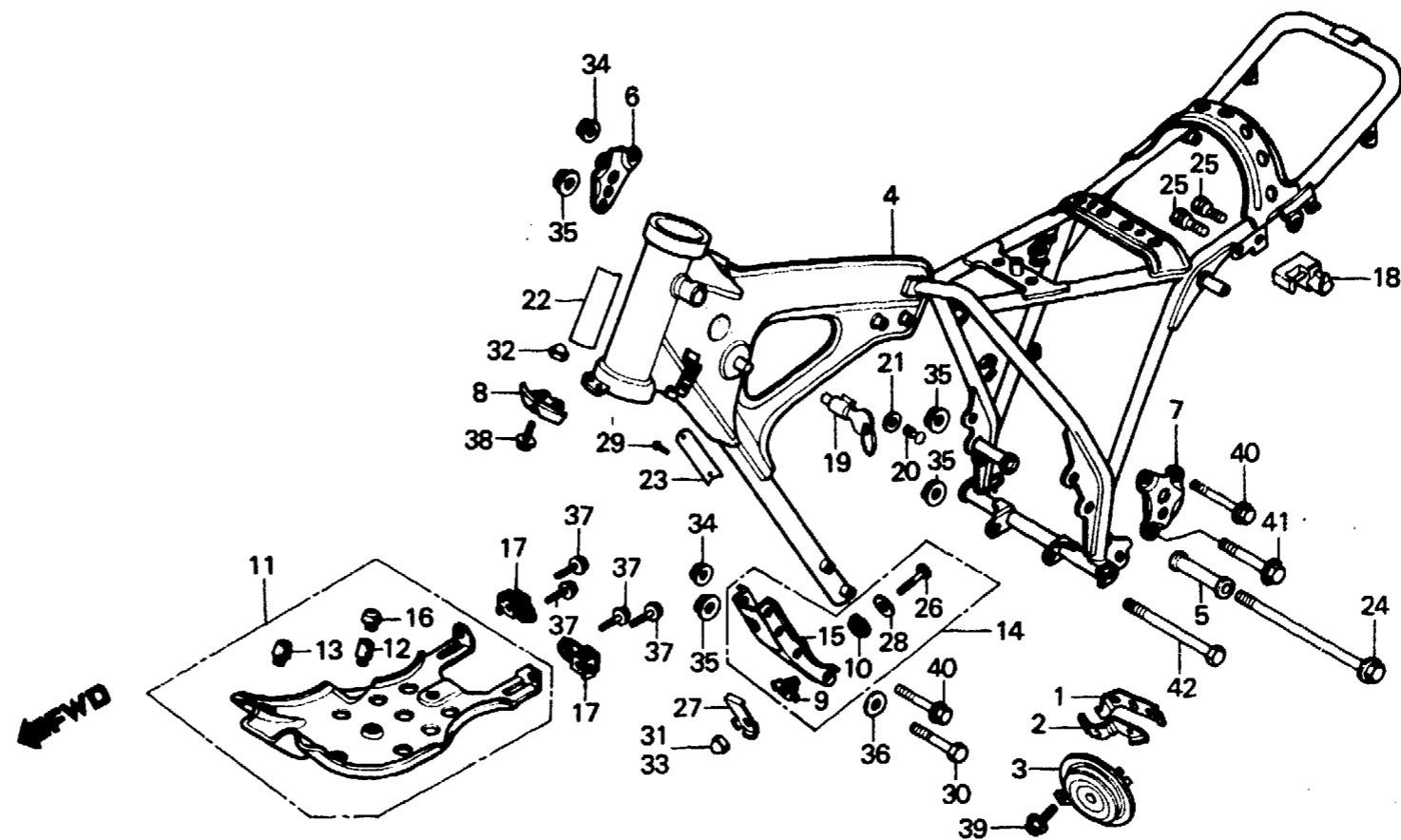
F-26

**Frame body
(XL250S·SZ·SA·SB)**

**Cadre
(XL250S·SZ·SA·SB)**

**Rahmen
(XL250S·SZ·SA·SB)**

**Cuerpo de cuadro
(XL250S·SZ·SA·SB)**



B428-55B

Service item	F.R.T.	Ref. No.	Part No.	Description	Reqd. No.					Serial No.	Area code
					S	Sz	SA	Sb	Rc		
26		90115-428-000	BOLT, HEX., 8X28	1		1	1			B, F, G	
				1	1				CM, DK, DM, SA, U		
				1			1		E, ED, F1, F2, G1, G2, SD		
27		90505-428-000	WASHER, TONGUED, 8MM	1		1	1			B, F, G	
				1	1				CM, DK, DM, SA, U		
				1			1		E, ED, F1, F2, G1, G2, SD		
28		90534-011-000	WASHER, 8.3MM	1		1	1			B, F, G	
				1	1				CM, DK, DM, SA, U		
				1			1		E, ED, F1, F2, G1, G2, SD		
29		90841-001-000	SCREW, RIVET, 1.5X5	2		2	3			B, E, ED, F, F1, F2, G, G1	
				2		2			G2, SD		
				2	2				SW		
30		92200-10060-0A	BOLT, HEX., 10X60	2	2	2	2			U	
				2	2	2	2				
31		94001-08000-0S	NUT, HEX., 8MM			1				B	
32		94021-06000	NUT, CAP, 6MM	2	2	2	2			CM, DK, DM, SA, U	

2-J4

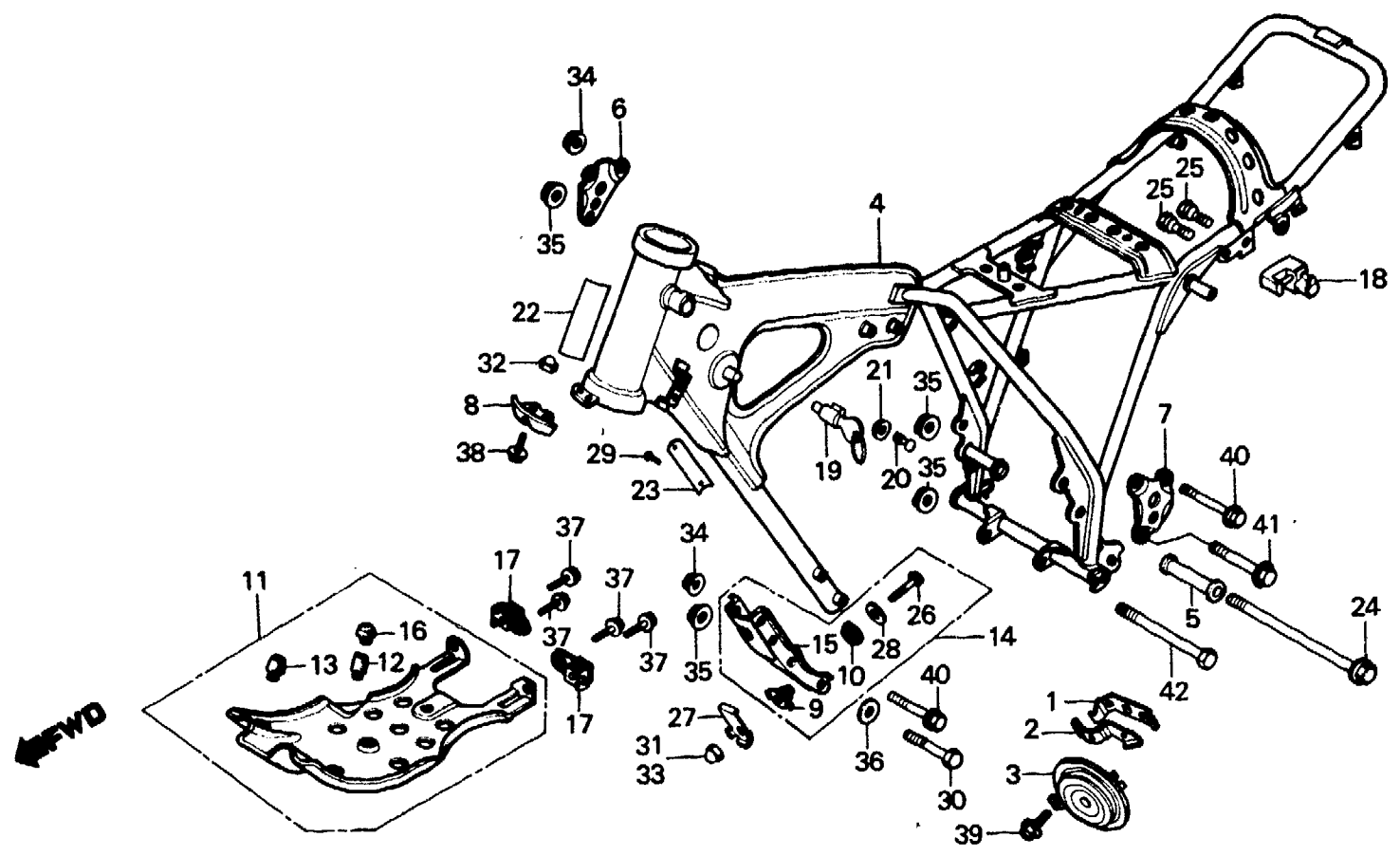
F-26

**Frame body
(XL250S·SZ·SA·SB)**

**Cadre
(XL250S·SZ·SA·SB)**

**Rahmen
(XL250S·SZ·SA·SB)**

**Cuerpo de cuadro
(XL250S·SZ·SA·SB)**



B428-55B

Service item	F.R.T.	Ref. No.	Part No.	Description	Reqd. No.					Serial No.	Area code
					S	XL250			Rc		
						Sz	SA	Sb			
		33	94021-08000-0S	NUT, CAP, 8MM	1			1			B,E,ED,F,F1,F2,G,G1 G2,SD,SW CM,DK,DM,SA,U
		34	94050-08000	NUT, FLANGE, 8MM	1	1					
		35	94050-10000	NUT, FLANGE, 10MM	4	4	4	4			
		36	94101-10000	WASHER, PLAIN, 10MM	5	5	5	5			
		37	95700-06012-00	BOLT, FLANGE, 6X12	2	2	2	2			
		38	95700-06016-00	BOLT, FLANGE, 6X16	4	4	4	4			
		39	95700-08020-00	BOLT, FLANGE, 8X20	2	2	2	2			CM,DK,DM,SA,U B,DK,DM,E,ED,F1,F2,G1 G2,SA,SD,SW,U
		40	95800-08060-00	BOLT, FLANGE, 8X60				1			
		41	95800-10070-00	BOLT, FLANGE, 10X70	4	4	4	4			
		42	95800-10125-00	BOLT, FLANGE, 10X125	1	1	1	1			

2-J5

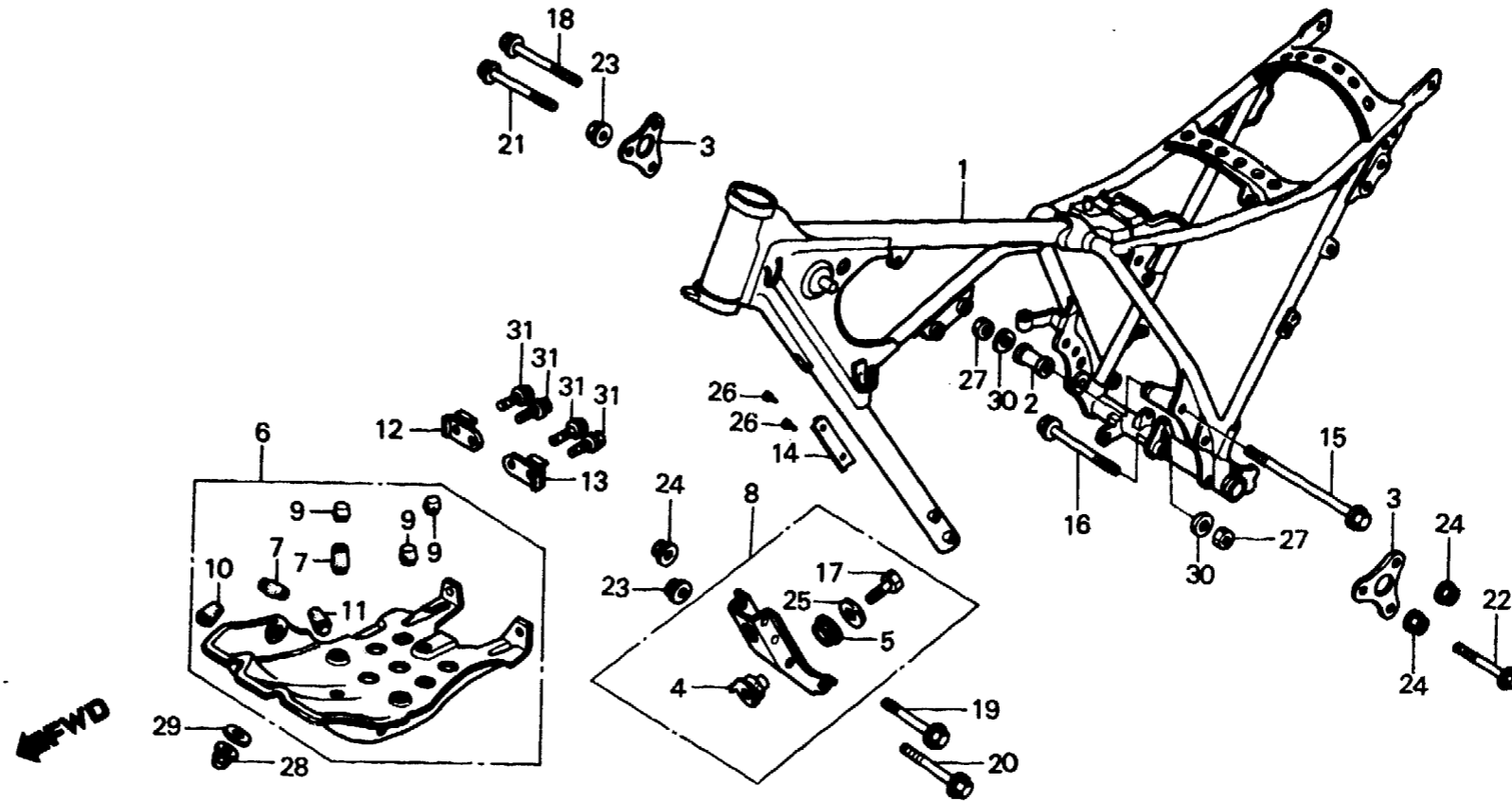
F-26-1

Frame body
(XL250Rc)

Cadre
(XL250Rc)

Rahmen
(XL250Rc)

Cuerpo de cuadro
(XL250Rc)



BKB7-23

Service item	F.R.T.	Ref. No.	Part No.	Description	Reqd. No.				Serial No.	Area code	
					S	Sz	SA	Sb			Rc
BODY COMP., FRAME PLATE, SKID HANGER, FR. ENGINE	*6.0 0.2	1	50100-KB7-000ZA	BODY COMP., FRAME *R-110*					1	DK,DM,SA	
			50100-KB7-000ZB	BODY COMP., FRAME *NH-1*					1	DK,DM,SA	
			50100-KB7-600ZA	BODY COMP., FRAME *R-110*					1	B,E,F1,F2,IT,SW,U	
			50100-KB7-600ZB	BODY COMP., FRAME *NH-1*					1	B,E,F1,F2,IT,SW,U	
			50100-KB7-610ZA	BODY COMP., FRAME *R-110*					1	ED,G1,G2,SD	
			50100-KB7-610ZB	BODY COMP., FRAME *NH-1*					1	ED,G1,G2,SD	
			50100-KB7-720ZA	BODY COMP., FRAME *R-110*					1	CM	
			2	50130-MA0-000ZB	COLLAR, ENGINE HANGER *R-110*					1	B,DK,DM,E,ED,F1,F2,G1 G2,IT,SA,SD,SW,U
			50130-MA0-000ZC	COLLAR, ENGINE HANGER *NH-1*					1		
			3	50138-KB7-000ZA	PLATE, UPPER ENGINE HANGER *R-110*					2	B,DK,DM,E,ED,F1,F2,G1 G2,IT,SA,SD,SW,U
			50138-KB7-000ZB	PLATE, UPPER ENGINE HANGER *NH-1*					2		
			4	50325-428-000	MOUNT A, SKID					1	
			5	50326-428-000	MOUNT B, SKID					1	

2-J6

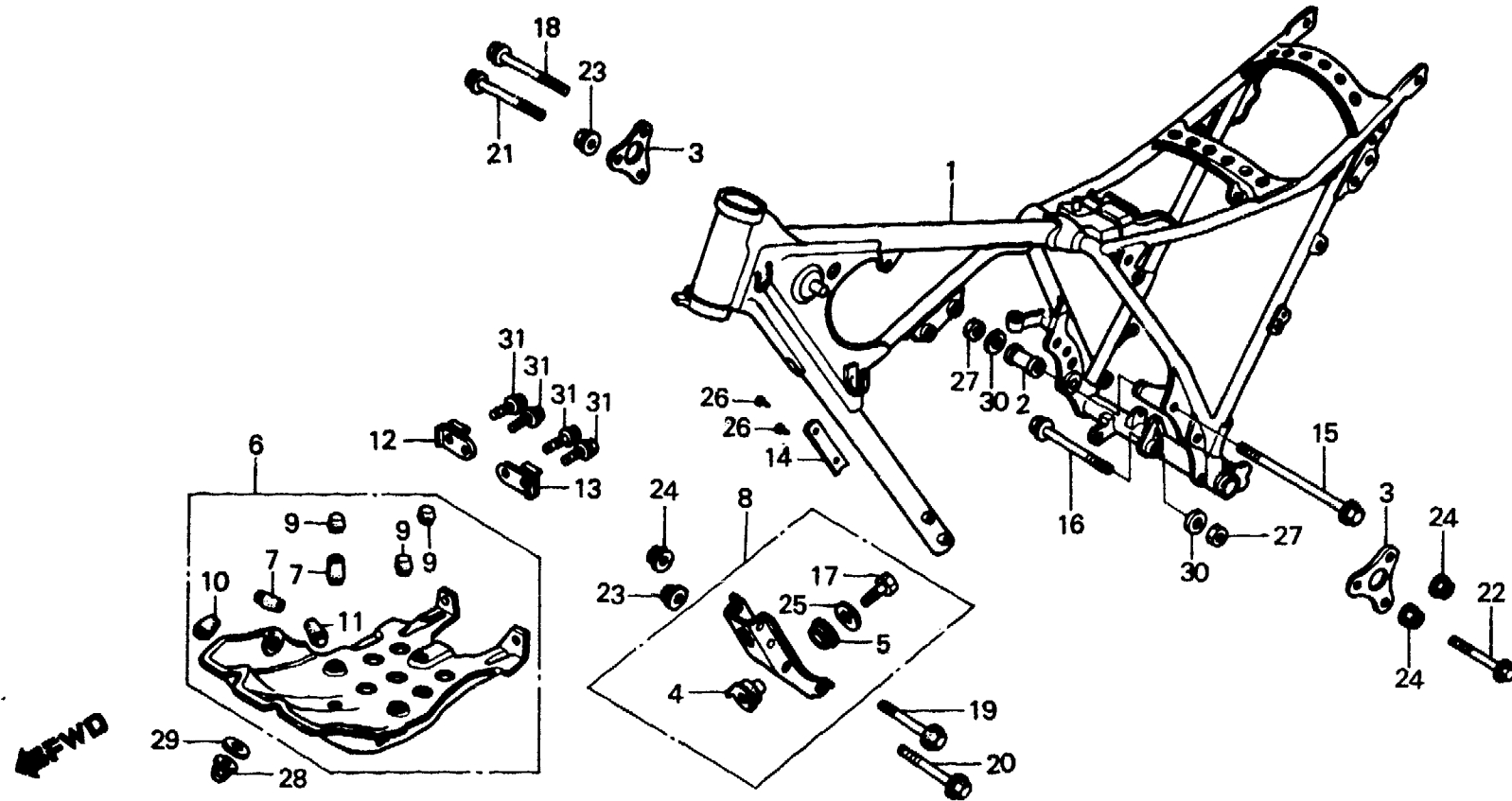
F-26-1

**Frame body
(XL250Rc)**

**Cadre
(XL250Rc)**

**Rahmen
(XL250Rc)**

**Cuerpo de cuadro
(XL250Rc)**



BKB7-23

Service item	F.R.T.	Ref. No.	Part No.	Description	Reqd. No.				Serial No.	Area code
					S	Sz	SA	Sb		
		6	50351-KB7-000	PLATE, SKID					1	
		7	50352-434-000	RUBBER A, STOPPER					2	
		8	50353-KB7-000ZA	HANGER, FR. ENGINE *R-110*					1	
			50353-KB7-000ZB	HANGER, FR. ENGINE *NH-1*					1	B, DK, DM, E, ED, F1, F2, G1 G2, IT, SA, SD, SW, U
		9	50354-428-000	RUBBER B, STOPPER					3	
		10	50354-434-000	RUBBER B, STOPPER					1	
		11	50355-434-000	RUBBER C, STOPPER					1	
		12	50360-KB7-000	RUBBER, R. SKID MOUNTING					1	
		13	50361-KB7-000	RUBBER, L. SKID MOUNTING					1	
		14	87501-KB7-600	PLATE, REGISTERED NUMBER					1	B, E, ED, F1, G1, G2, IT, SD SW F2
			87501-KB7-750	PLATE, REGISTERED NUMBER					1	
		15	90104-429-000	BOLT, FLANGE, 12X240					1	
		16	90114-MAC-000	BOLT, FLANGE, 12X140					1	
		17	90115-428-000	BOLT, HEX., 8X28					1	
		18	90154-KB7-000	BOLT, FLANGE, 8X70					1	