

2-G7

F-22

Winker

(XL250S, Sz, SA, Sb-CM, DK, DM, E, F1, F2, SA, U)

Clignotant

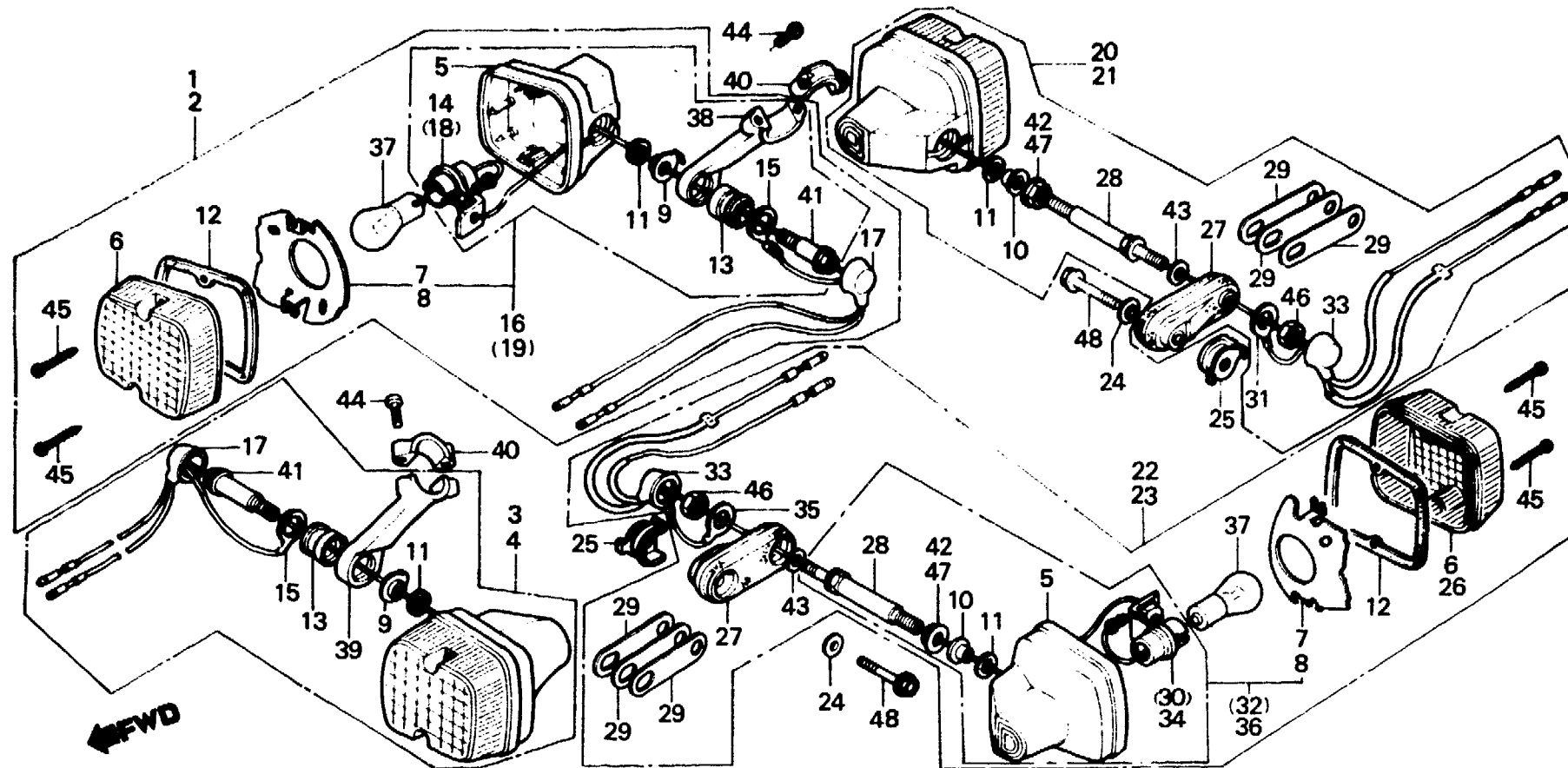
(XL250S, Sz, SA, Sb-CM, DK, DM, E, F1, F2, SA, U)

Blinker

(XL250S, Sz, SA, Sb-CM, DK, DM, E, F1, F2, SA, U)

Luz intermitente

(XL250S, Sz, SA, Sb-CM, DK, DM, E, F1, F2, SA, U)



B435-24

Service item	F.R.T.	Ref. No.	Part No.	Description	Reqd. No. XL250					Serial No.	Area code
					S	Sz	SA	Sb	Rc		
		6	33402-428-671	LENS, WINKER	4	4	4	4			CM, DK, DM, SA, U
		7	33403-428-671	REFLECTOR	4	4	4	4			B, E, F1, F2
		8	33403-443-003	REFLECTOR	4	4	4	4			CM
		9	33404-428-003	STOPPER, FR. WINKER	2	2	2	2			DK, DM, SA, U
					2						CM
			33404-437-000	STOPPER, FR. WINKER			2	2			DK, DM, SA, U
		10	33405-428-003	COLLAR, WINKER BASE	2	2	2	2			B, DK, DM, E, F1, F2, SA, U
							2	2			B, CM, DK, DM, F1, F2, SA, E
		11	33406-428-003	SEAL, GASKET	4	4	4	4			B, CM, DK, DM, F1, F2, SA, E
		12	33407-428-003	GASKET, LENS			4	4			B, E, F1, F2
		13	33408-428-013	RUBBER, FR. WINKER MOUNTING	2	2	2				CM, DK, DM, SA, U
			33408-435-000	RUBBER, FR. WINKER MOUNTING			2	2			B, E, F1, F2
								2			CM, DK, DM, SA, U
		14	33410-428-671	SOCKET COMP., R. FR. WINKER	1	1	1	1			B, CM, DK, DM, F1, F2, SA, U
							1	1			E
		15	33415-428-010	CORD, WINKER EARTH	2	2	2	2			B, CM, DK, DM, E, F1, F2, SA, U

2-G8

F-22

Winker

(XL250S,Sz,SA,Sb-CM,
DK,DM,E,F1,F2,SA,U)

Clignotant

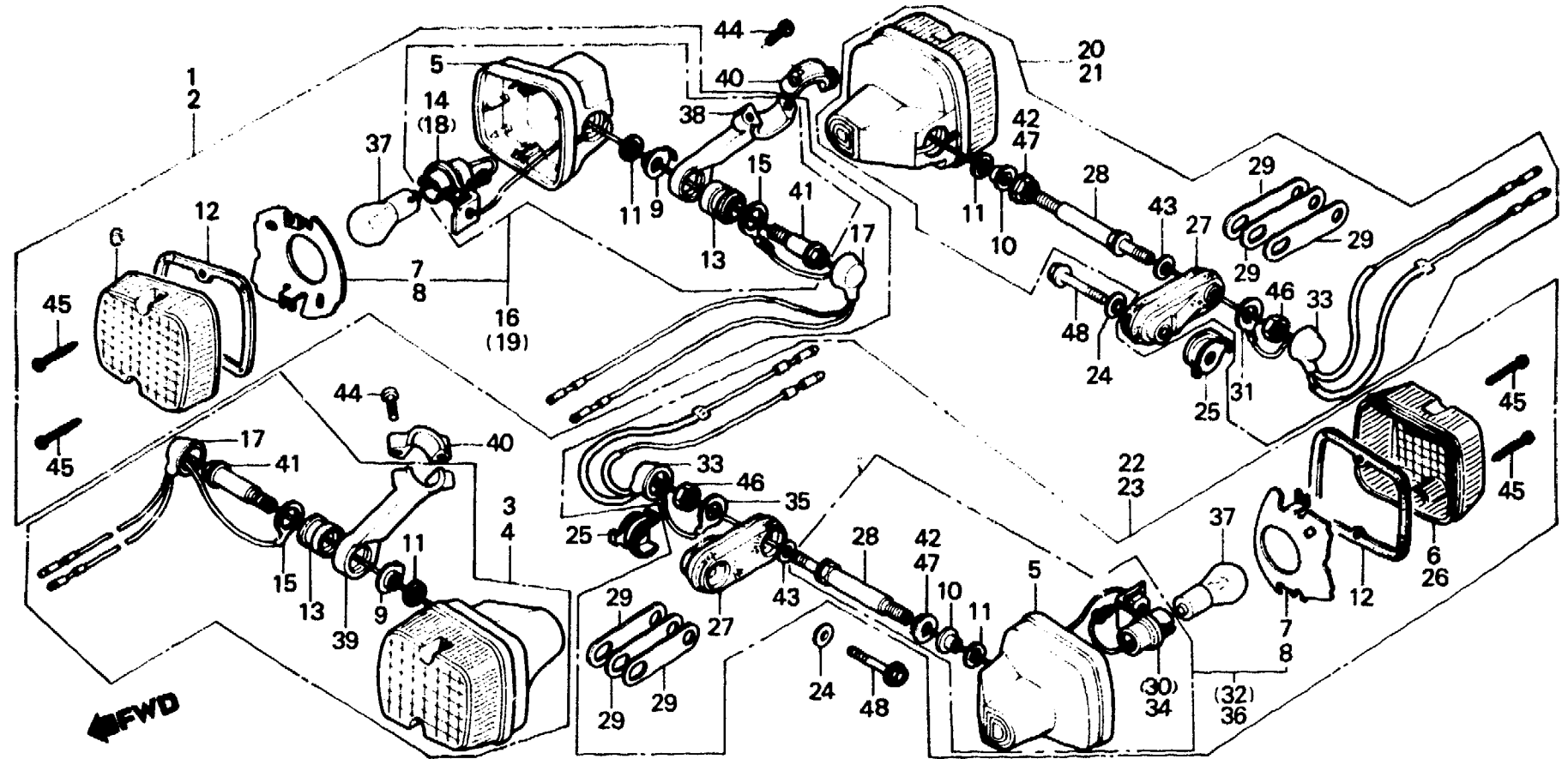
(XL250S,Sz,SA,Sb-CM,
DK,DM,E,F1,F2,SA,U)

Blinker

(XL250S,Sz,SA,Sb-CM,
DK,DM,E,F1,F2,SA,U)

Luz intermitente

(XL250S,Sz,SA,Sb-CM,
DK,DM,E,F1,F2,SA,U)



B425-24

Service item	F.R.T.	Ref. No.	Part No.	Description	Reqd. No.					Serial No.	Area code
					S	Sz	SA	Sb	Rc		
		16	33420-435-000	BASE COMP., R. FR. WINKER				1	1		DK,DM,SA,U
			33420-435-600	BASE COMP., R. FR. WINKER				1	1		B,E,F1,F2
		17	33425-428-000	COVER, WINKER CORD	2	2		2			CM
			33425-428-003	COVER, WINKER CORD				2	2		B,DK,DM,E,F1,F2,SA,U
									2		CM
		18	33460-428-671	SOCKET COMP., L. FR. WINKER	1	1		1	1		B,CM,DK,DM,F1,F2,SA,U
								1	1		E
		19	33470-435-000	BASE COMP., L. FR. WINKER				1	1		DK,DM,SA,U
			33470-435-600	BASE COMP., L. FR. WINKER				1	1		B,E,F1,F2
		20	33500-428-003	WINKER SET, R. RR.	1						DK,DM,SA,U
			33500-435-000	WINKER SET, R. RR.				1	1		DK,DM,SA,U
			33500-435-600	WINKER SET, R. FR.				1	1		B,E,F1,F2

2-G9

F-22

Winker

(XL250S,Sz,SA,Sb-CM,
DK,DM,E,F1,F2,SA,U)

Clignotant

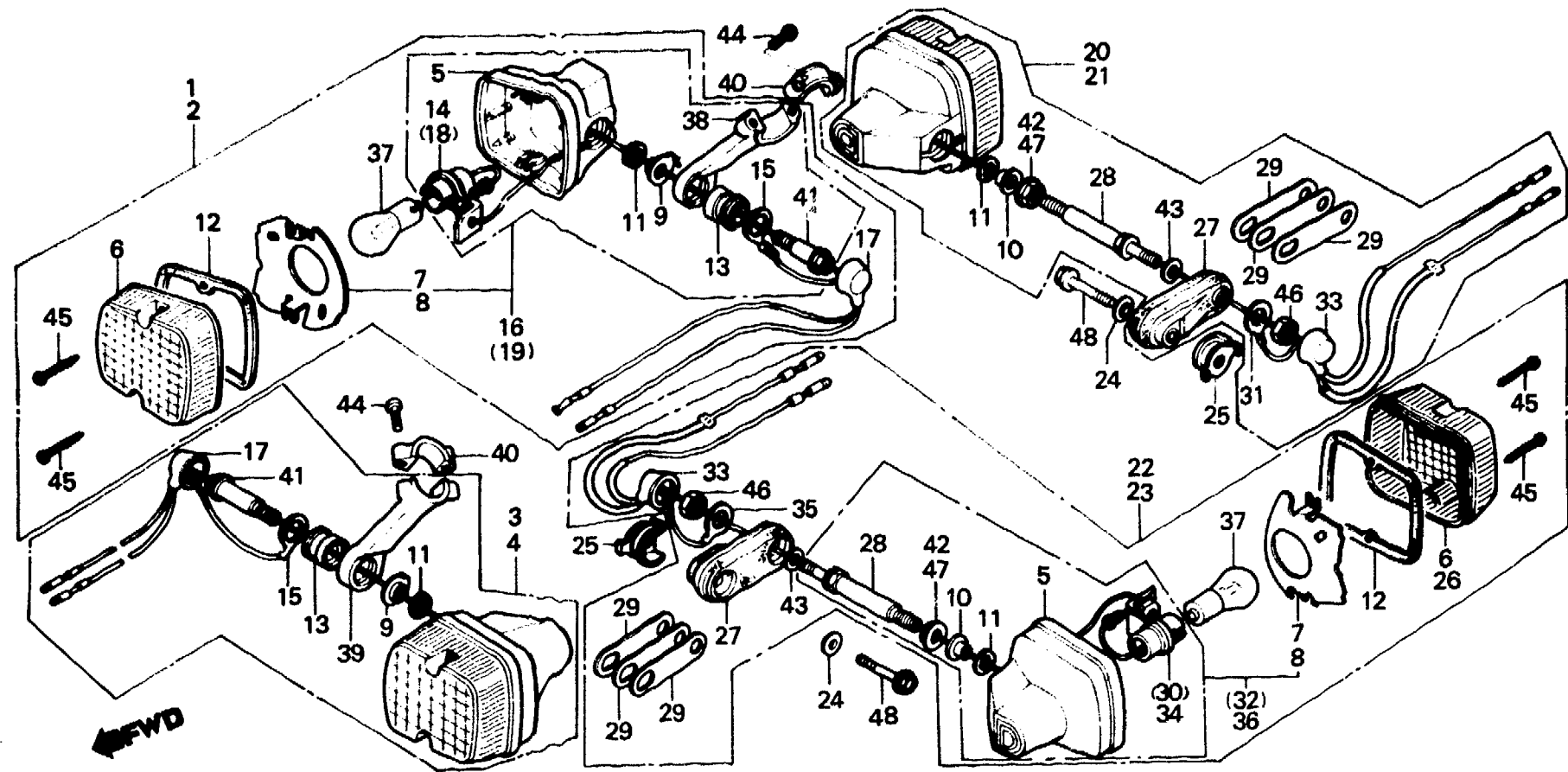
(XL250S,Sz,SA,Sb-CM,
DK,DM,E,F1,F2,SA,U)

Blinker

(XL250S,Sz,SA,Sb-CM,
DK,DM,E,F1,F2,SA,U)

Luz intermitente

(XL250S,Sz,SA,Sb-CM,
DK,DM,E,F1,F2,SA,U)



B435-24

Service item	F.R.T.	Ref. No.	Part No.	Description	Reqd. No. XL250					Serial No.	Area code
					S	Sz	SA	Sb	Rc		
		21	33500-428-672	WINKER SET, R. RR.	1	1	1				CM
			33500-435-670	WINKER SET, R. RR.					1		CM
		22	33550-428-C03	WINKER SET, L. RR.	1						DK,DM,SA,U
			33550-435-000	WINKER SET, L. RR.			1	1			DK,DM,SA,U
			33550-435-600	WINKER SET, L. RR.			1	1			B,E,F1,F2
		23	33550-428-672	WINKER SET, L. RR.	1	1	1				CM
			33550-435-670	WINKER SET, L. RR.					1		CM
		24	33601-428-000	WASHER, RR. WINKER	2	2	2	2			B,CM,DK,DM,F1,F2,SA,U
									2		E
		25	33602-428-000	STAY, RR. WINKER	2	2	2	2			B,CM,DK,DM,F1,F2,SA,U
									2		E
		26	33602-443-611	LENS, WINKER			2	2			B,E,F1,F2

2-G10

F-22

Winker

(XL250S, Sz, SA, Sb-CM, DK, DM, E, F1, F2, SA, U)

Clignotant

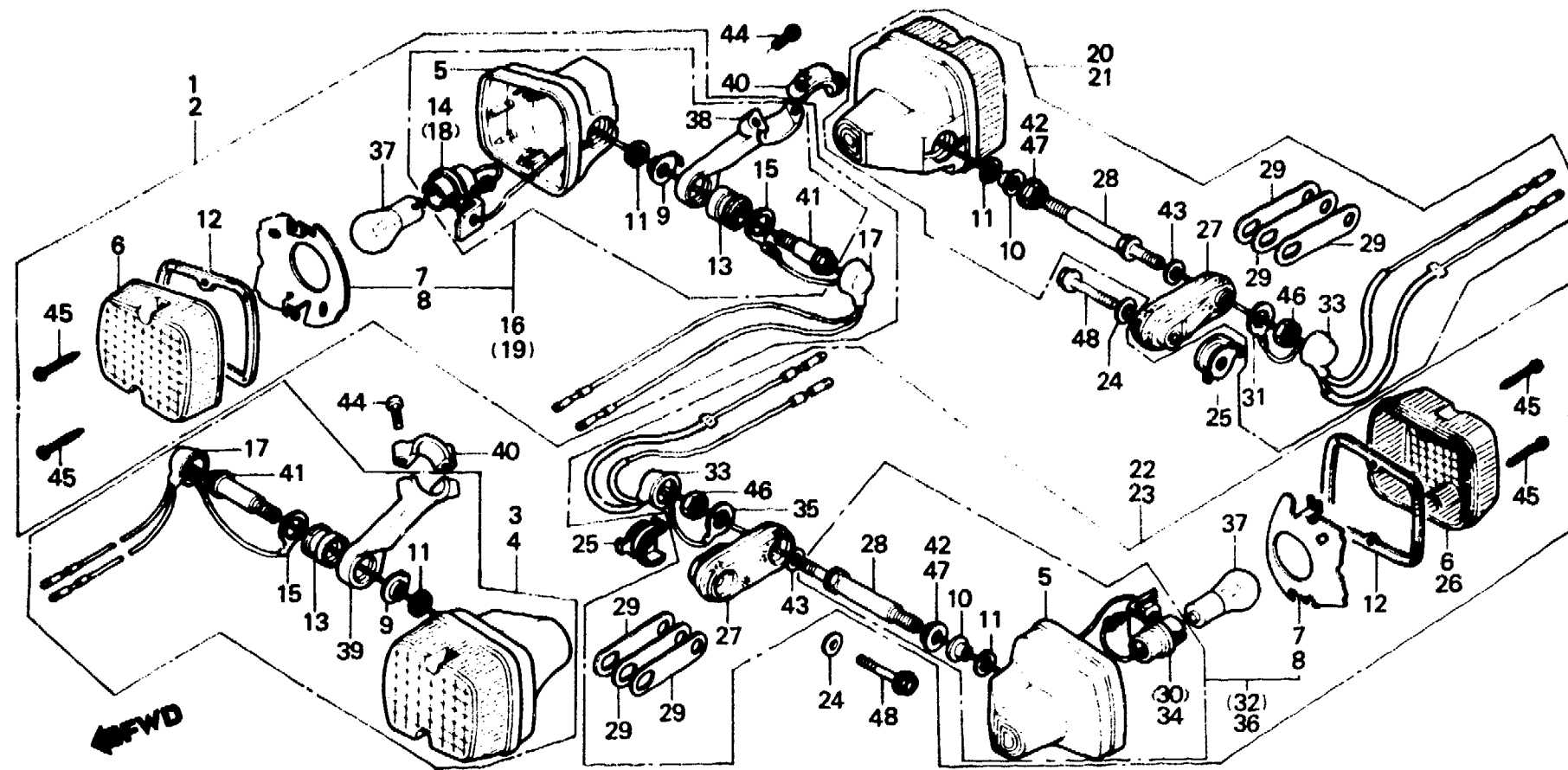
(XL250S, Sz, SA, Sb-CM, DK, DM, E, F1, F2, SA, U)

Blinker

(XL250S, Sz, SA, Sb-CM, DK, DM, E, F1, F2, SA, U)

Luz intermitente

(XL250S, Sz, SA, Sb-CM, DK, DM, E, F1, F2, SA, U)



B435-24

Service item	F.R.T.	Ref. No.	Part No.	Description	Reqd. No. XL250				Serial No.	Area code
					S	Sz	SA	Sb Rc		
		27	33604-428-000	RUBBER, RR. WINKER	2	2	2	2		B, CM, DK, DM, F1, F2, SA, U E
		28	33605-428-000 33605-435-000	BOLT, RR. WINKER BOLT, RR. WINKER	2	2	2	2		CM, DK, DM, SA, U B, E, F1, F2 CM, DK, DM, SA, U
		29	33607-428-010	SPRING, RR. WINKER	6	6	6	6		B, CM, DK, DM, F1, F2, SA, U E
		30	33610-428-671	SOCKET COMP., R. RR.	1	1	1	1		B, CM, DK, DM, F1, F2, SA, U E
		31	33615-428-000	CORD, R. WINKER EARTH	1	1	1	1		B, CM, DK, DM, F1, F2, SA, U E
		32	33620-435-600	BASE COMP., R. RR. WINKER			1	1		B, E, F1, F2
		33	33625-428-000	COVER, WINKER CORD	2	2	2	2		B, CM, DK, DM, F1, F2, SA, U E
		34	33660-428-671	SOCKET COMP., L. RR.	1	1	1	1		B, CM, DK, DM, F1, F2, SA, U E
		35	33665-428-000	CORD, L. WINKER EARTH	1	1	1	1		B, CM, DK, DM, F1, F2, SA, U E

2-G11

F-22

Winker

(XL250S, Sz, SA, Sb-CM, DK, DM, E, F1, F2, SA, U)

Clignotant

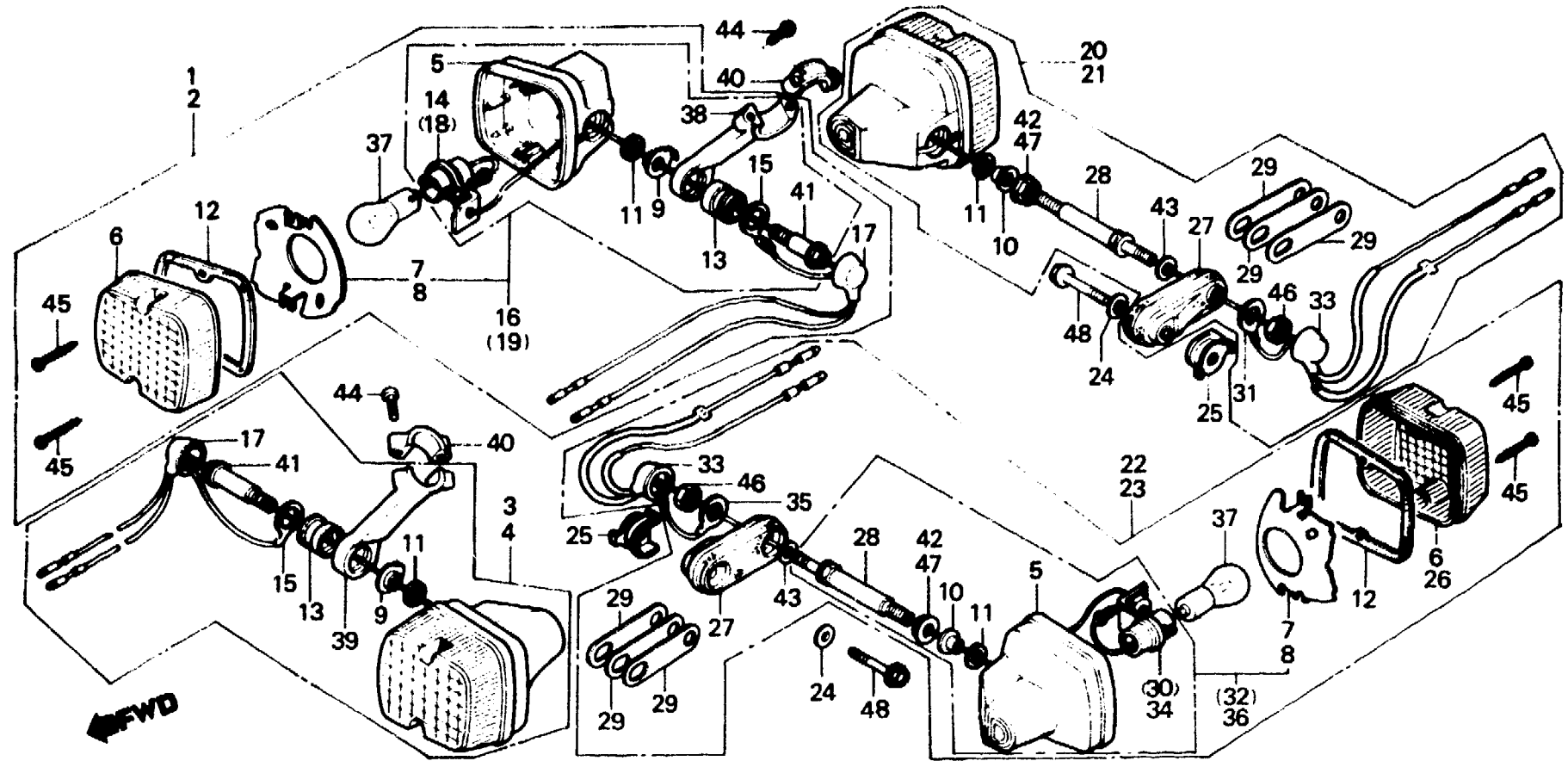
(XL250S, Sz, SA, Sb-CM, DK, DM, E, F1, F2, SA, U)

Blinker

(XL250S, Sz, SA, Sb-CM, DK, DM, E, F1, F2, SA, U)

Luz intermitente

(XL250S, Sz, SA, Sb-CM, DK, DM, E, F1, F2, SA, U)



B435-24

Service item	F.R.T.	Ref. No.	Part No.	Description	Reqd. No. XL250					Serial No.	Area code
					S	Sz	SA	Sb	Rc		
		36	33670-435-600	BASE COMP., L. RR. WINKER			1	1		B, E, F1, F2	
		37	34905-056-671	BULB, WINKER (6V18W)	4	4	4			CM	
			34905-358-003	BULB, WINKER (6V 17W)	4		4	4		DK, DM, SA, U	
			34905-399-611	BULB, WINKER (LOCAL PROCUREMENT PART)			4	4		CM	
										B, E, F1, F2	
		38	53101-428-000	BRACKET, R. FR. WINKER	1	1	1	1		B, CM, DK, DM, F1, F2, SA, U	
										E	
		39	53102-428-000	BRACKET, L. FR. WINKER	1	1	1	1		B, CM, DK, DM, F1, F2, SA, U	
										E	
		40	53103-428-000	HOLDER, WINKER STAY	2	2	2	2		B, CM, DK, DM, F1, F2, SA, U	
										E	
		41	90129-428-000	BOLT, FR. WINKER SETTING	2	2	2	2		B, CM, DK, DM, F1, F2, SA, U	
										E	
		42	90235-428-000	NUT, LOCK, 18MM	2	2	2	2		CM	
		43	90528-329-690	WASHER, 10.2X20	2	2	2	2		B, CM, DK, DM, F1, F2, SA, U	
										E	

2-G12

F-22

Winker

(XL250S,Sz,SA,Sb-CM,
DK,DM,E,F1,F2,SA,U)

Clignotant

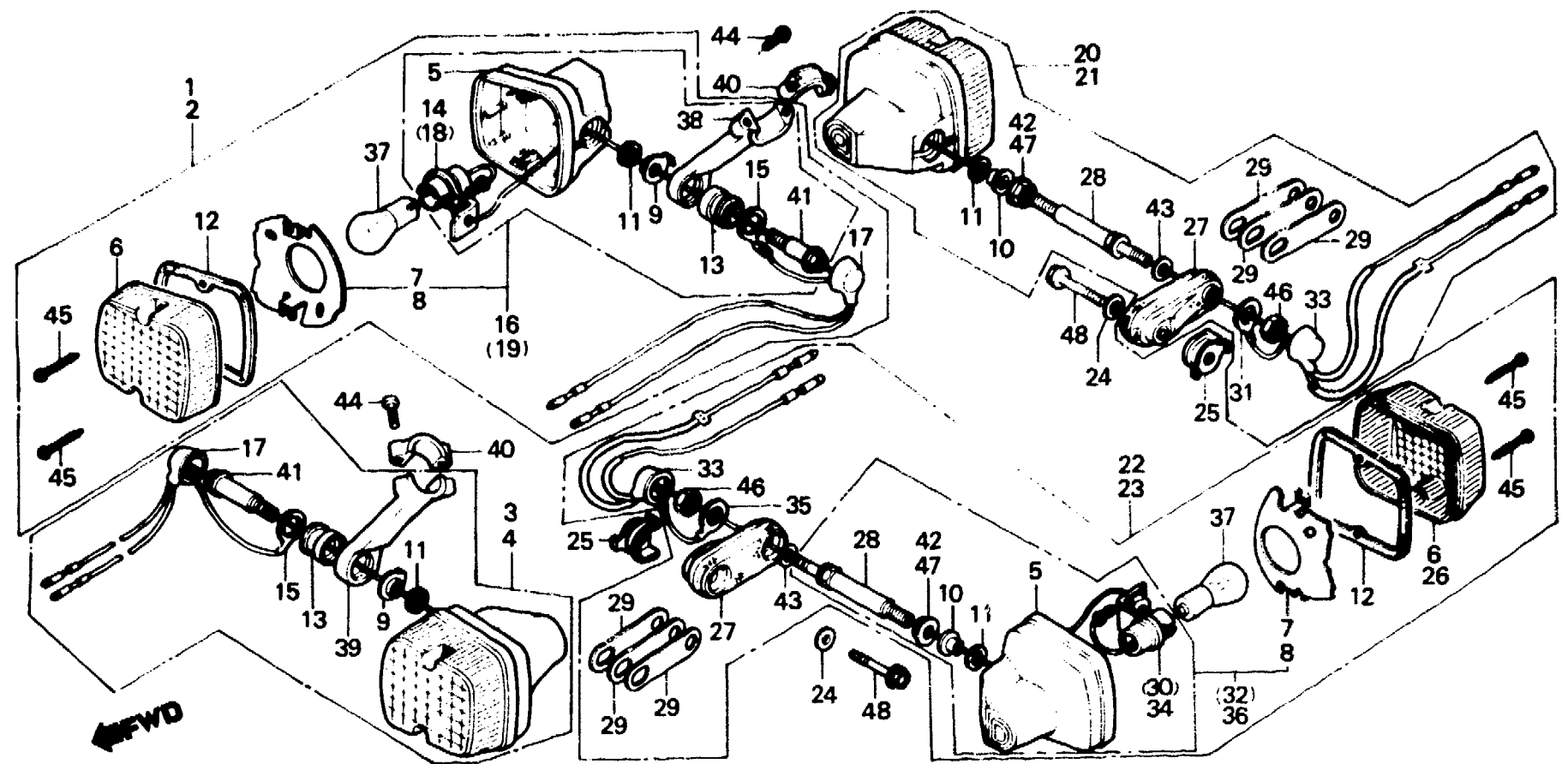
(XL250S,Sz,SA,Sb-CM,
DK,DM,E,F1,F2,SA,U)

Blinker

(XL250S,Sz,SA,Sb-CM,
DK,DM,E,F1,F2,SA,U)

Luz intermitente

(XL250S,Sz,SA,Sb-CM,
DK,DM,E,F1,F2,SA,U)



B435-24

Service item	F.R.T.	Ref. No.	Part No.	Description	Reqd. No.					Serial No.	Area code
					S	Sz	SA	Sb	Rc		
		44	93500-05016-0A	SCREW, PAN, 5X16	4	4	4	4			B,CM,DK,DM,F1,F2,SA,U
		45	93901-24610	SCREW, TAPPING, 4X25	8	8	8	8			E B,CM,DK,DM,F1,F2,SA,U
		46	94002-10000-0S	NUT, HEX., 10MM	2	2	2	2			B,CM,DK,DM,F1,F2,SA,U
		47	94050-10000	NUT, FLANGE, 10MM	2	2	2				E CM
			90201-428-003	NUT, FLANGE, 10MM	2		2	2			DK,DM,SA,U B,DK,DM,E,F1,F2,SA,U
		48	95700-06050-00	BOLT, FLANGE, 6X50	2	2	2	2			CM B,CM,DK,DM,F1,F2,SA,U

2-G13

F-22-1

Winker

(XL250S, SA, SB-B, E.)
(ED, F, G, G1, G2, SW)

Clignotant

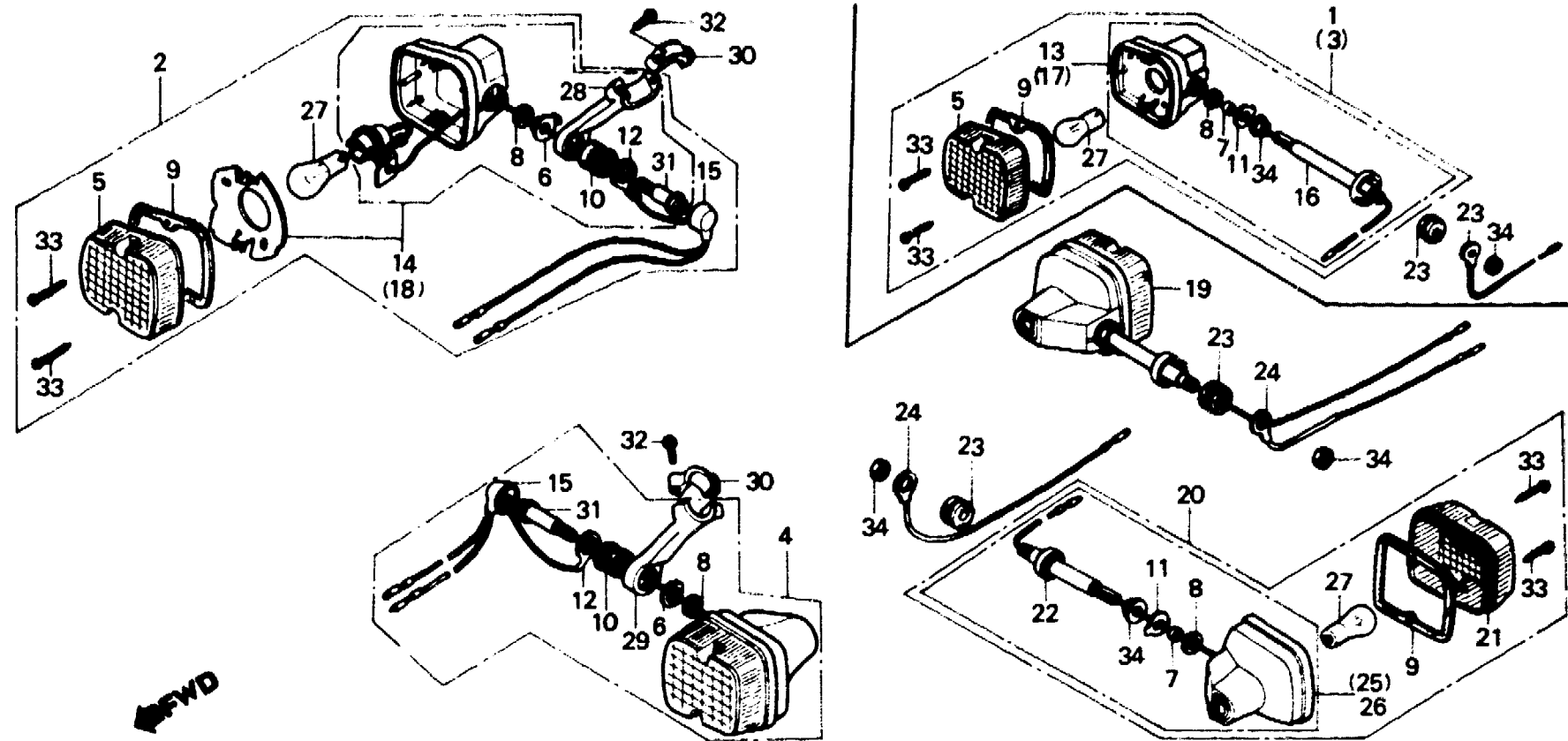
(XL250S, SA, SB-B, E.)
(ED, F, G, G1, G2, SW)

Blinker

(XL250S, SA, SB-B, E.)
(ED, F, G, G1, G2, SW)

Luz intermitente

(XL250S, SA, SB-B, E.)
(ED, F, G, G1, G2, SW)



8435-64

Service item	F.R.T.	Ref. No.	Part No.	Description	Reqd. No.					Serial No.	Area code
					S	Sz	SA	SB	Rc		
WINKER SET (ADD 0.1 FOR EACH.) INC. RELATIVE PART (EXC. RELATED PARTS BELOW) BULB, WINKER (WHEN SERVICING COMP., UNIT, F.R.T. IS 0.2.)	0.2	1	33300-428-611	WINKER SET, R. FR.	1						E, F, G
		2	33300-435-600	WINKER SET, R. FR.	1	1					ED, G1, G2, SD, SW
		3	33350-428-611	WINKER SET, L. FR.	1			1			ED, G1, G2, SD, SW
	0.1	4	33350-435-600	WINKER SET, L. FR.	1	1					E, F, G
		5	33402-428-671	LENS, WINKER	2			1			ED, G1, G2, SD, SW
		6	33404-437-000	STOPPER, FR. WINKER	2	2	2				E
		7	33405-428-611	COLLAR, WINKER BASE	4			2			ED, F, G, G1, G2, SD, SW
		8	33406-428-003	SEAL, GASKET	4	4					E
		9	33407-428-003	GASKET, LENS	4			4			ED, G1, G2, SD, SW
		10	33408-435-000	RUBBER, FR. WINKER MOUNTING	4			4			E

1982.01.10

E

2-G13

2-G 14

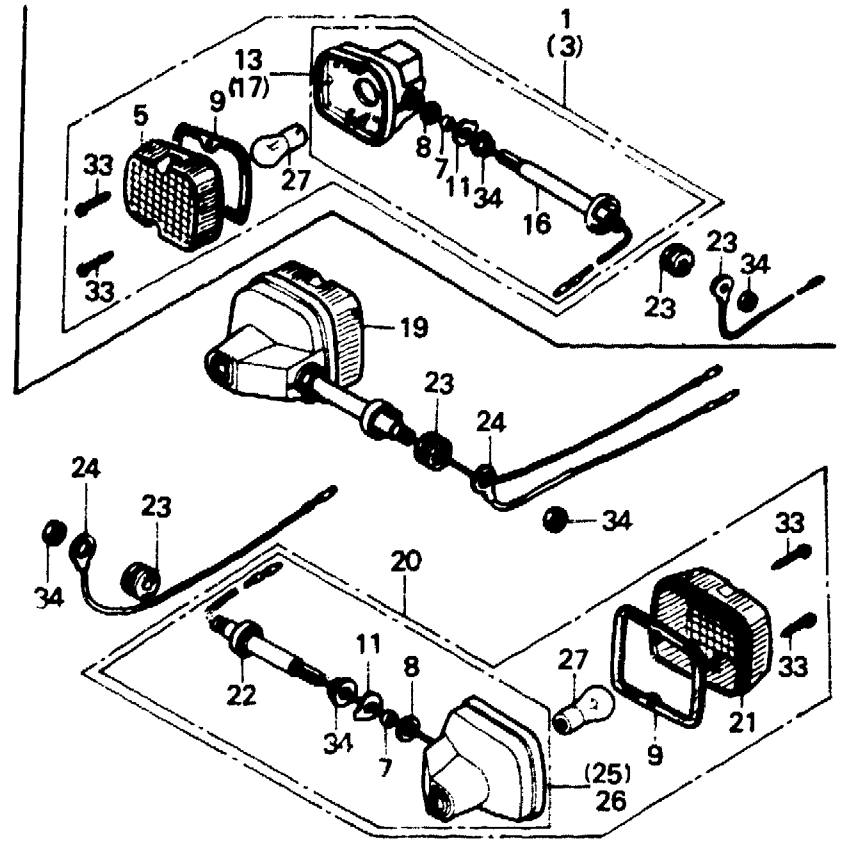
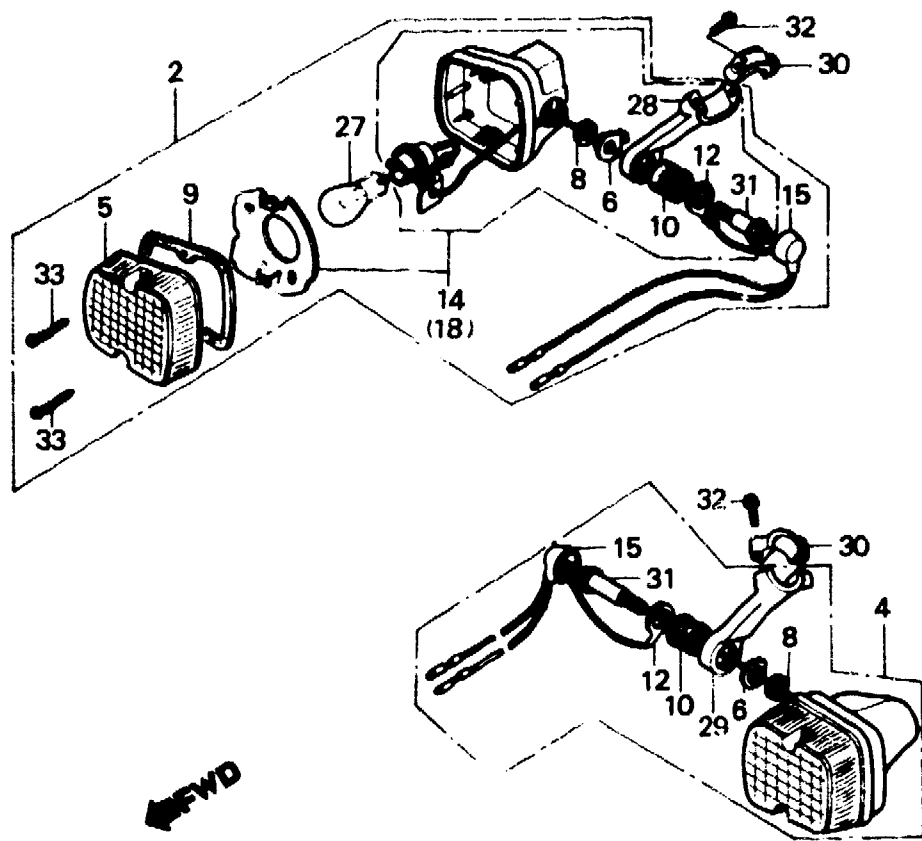
F-22-1

Winker
(XL250S, SA, Sb-B, E,
ED, F, G, G1, G2, SW)

Clignotant
(XL250S, SA, Sb-B, E,
ED, F, G, G1, G2, SW)

Blinker
(XL250S, SA, Sb-B, E,
ED, F, G, G1, G2, SW)

Luz intermitente
(XL250S, SA, Sb-B, E,
ED, F, G, G1, G2, SW)



B435-64

Service item	F.R.T.	Ref. No.	Part No.	Description	Reqd. No. XL250					Serial No.	Area Code
					S	Sz	SA	Sb	Rc		
		11	33411-428-611	WASHER, WINKER BASE	4						E, F, G
		12	33415-428-010	CORD, WINKER EARTH	4		4				ED, G1, G2, SD, SW
		13	33420-428-611	BASE COMP., R. FR. WINKER				2			ED, G1, G2, SD, SW
		14	33420-435-600	BASE COMP., R. FR. WINKER	1		1				E, F, G
		15	33425-428-003	COVER, WINKER CORD	1				1		ED, G1, G2, SD, SW
		16	33441-428-610	BOLT, FR. WINKER					2		ED, G1, G2, SD, SW
		17	33470-428-611	BASE COMP., L. FR. WINKER	2		2				E, F, G
		18	33470-435-600	BASE COMP., L. FR. WINKER	1		1				ED, G1, G2, SD, SW
		19	33500-428-611	WINKER SET, R. RR.	1				1		ED, G1, G2, SD, SW
		20	33550-428-611	WINKER SET, L. RR.	1		1		1		E, F, G
					1		1	1			ED, G1, G2, SD, SW

2-G15

F-22-1

Winker

(XL250S, SA, SB-B, E,
ED, F, G, G1, G2, SW)

Clignotant

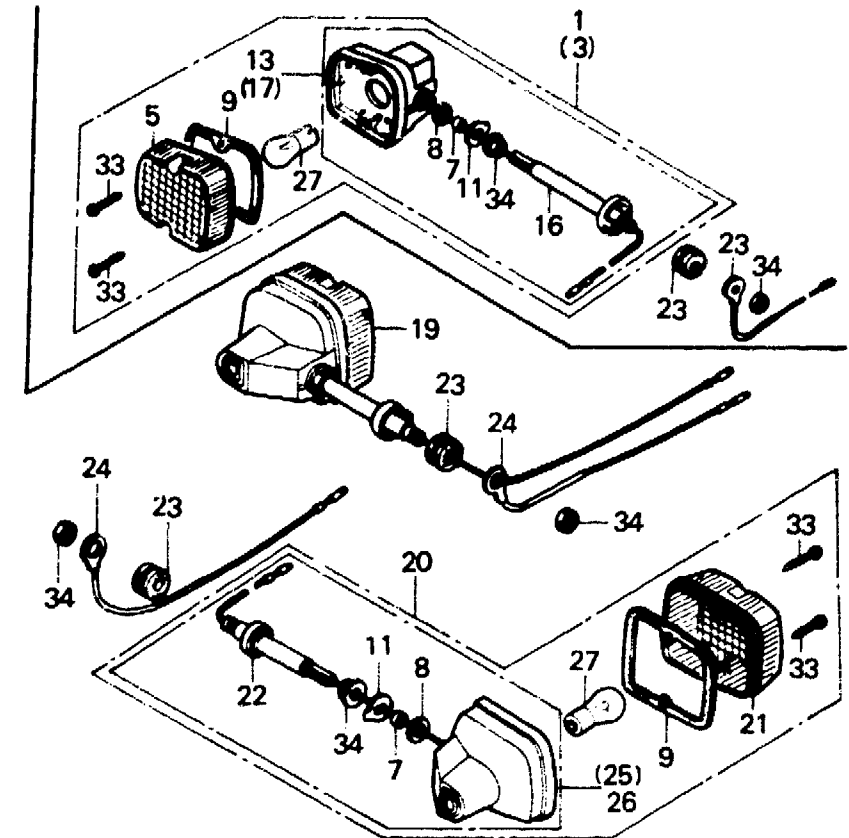
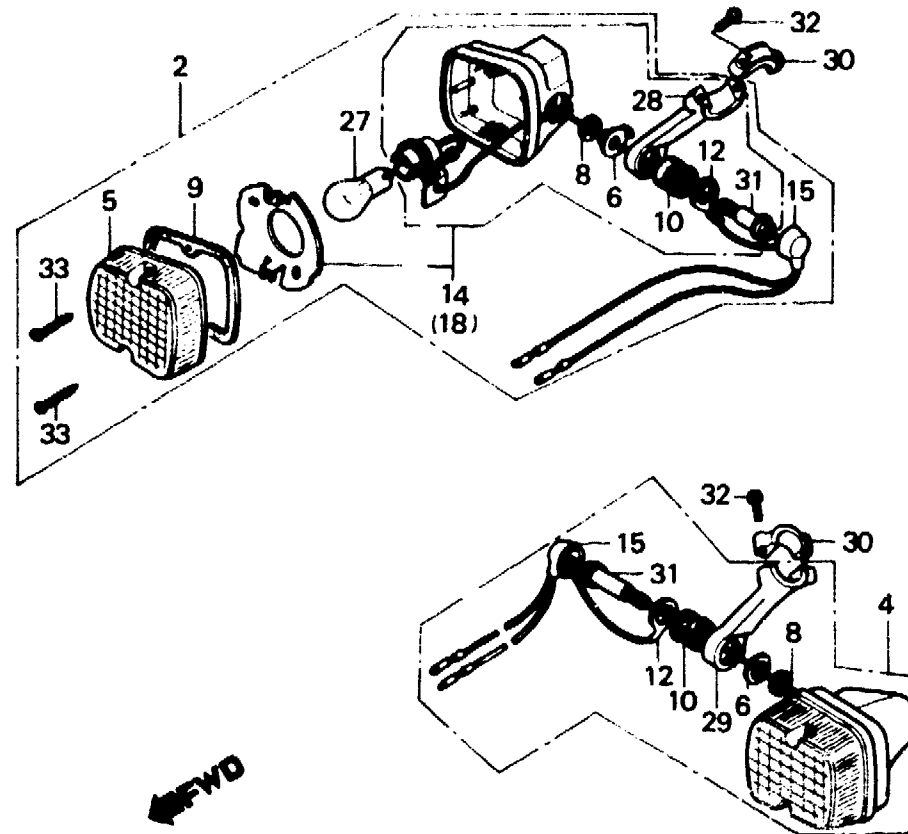
(XL250S, SA, SB-B, E,
ED, F, G, G1, G2, SW)

Blinker

(XL250S, SA, SB-B, E,
ED, F, G, G1, G2, SW)

Luz intermitente

(XL250S, SA, SB-B, E,
ED, F, G, G1, G2, SW)



B435-64

Service item	F.R.T.	Ref. No.	Part No.	Description	S	Reqd. No.				Serial No.	Area code
						XL250					
						Sz	SA	SB	Rc		
		21	33602-443-611	LENS, WINKER	2						E, F, G
		22	33605-428-610	BOLT, RR. WINKER	2	2	2				ED, G1, G2, SD, SW
		23	33606-428-610	RUBBER, WINKER BOLT MOUNTING	4		2	2			E, F, G
		24	33615-428-610	CORD, WINKER EARTH	4		4	2			ED, G1, G2, SD
		25	33620-428-611	BASE COMP., R. RR. WINKER	1		4	2			SW
		26	33670-428-611	BASE COMP., L. RR. WINKER	1		1	1			E, F, G
		27	34905-399-611	BULB, WINKER (LOCAL PROCUREMENT PART)	4	1	1				ED, G1, G2, SD, SW
		28	53101-428-000	BRACKET, R. FR. WINKER	4	4	4				E, F, G
		29	53102-428-000	BRACKET, L. FR. WINKER	4			1			ED, G1, G2, SD, SW
								1			ED, G1, G2, SD, SW

2-G16

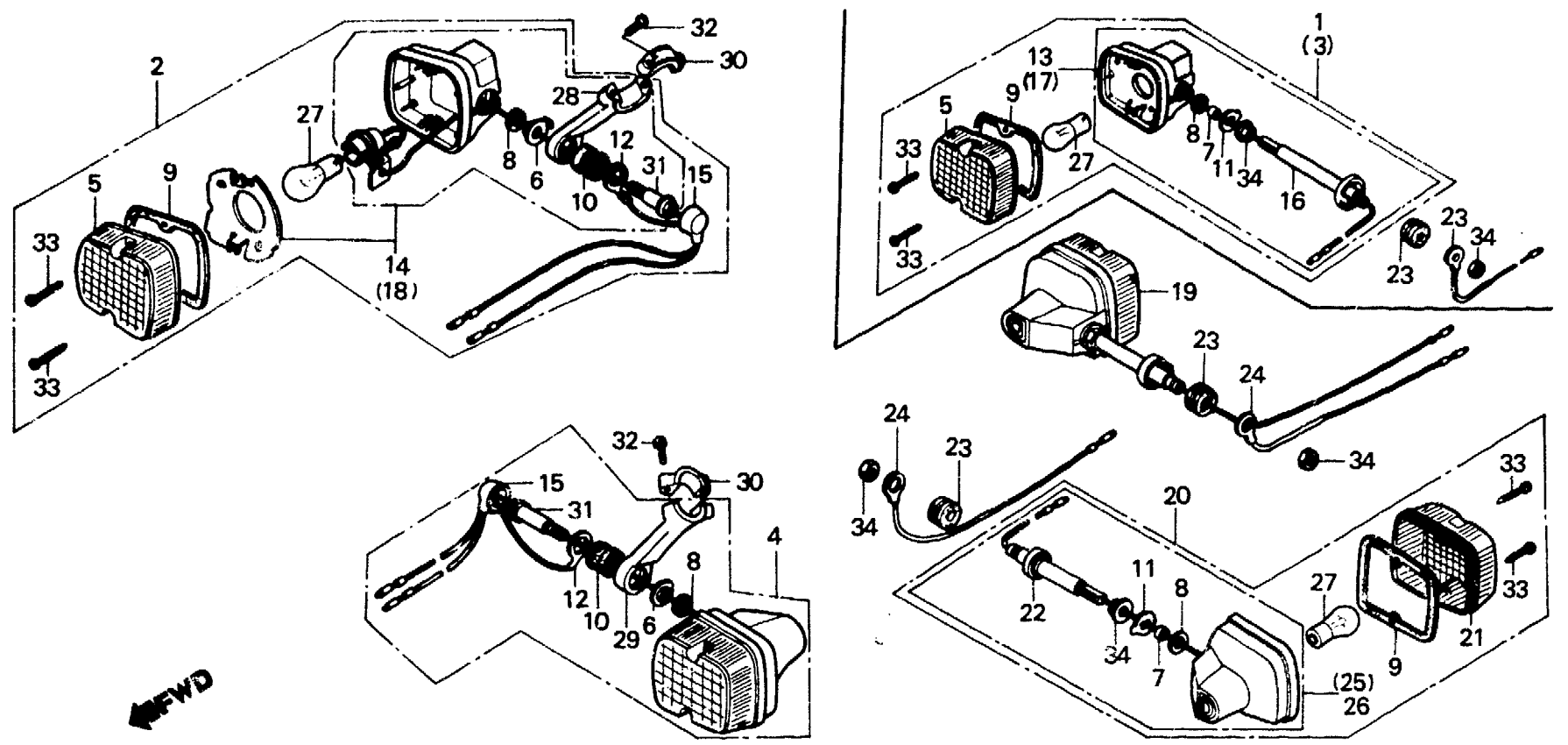
F-22-1

Winker
(XL250S, SA, SB-B, E, ED, F, G, G1, G2, SW)

Clignotant
(XL250S, SA, SB-B, E, ED, F, G, G1, G2, SW)

Blinker
(XL250S, SA, SB-B, E, ED, F, G, G1, G2, SW)

Luz intermitente
(XL250S, SA, SB-B, E, ED, F, G, G1, G2, SW)



B435-64

Service item	F.R.T.	Ref. No.	Part No.	Description	Reqd. No.					Serial No.	Area code
					S	Sz	SA	SB	Rc		
		30	53103-428-000	HOLDER, WINKER STAY				2		ED, G1, G2, SD, SW	
		31	90129-428-000	BOLT, FR. WINKER SETTING				2		ED, G1, G2, SD, SW	
		32	93500-05016-0A	SCREW, PAN, 5X16				4		ED, G1, G2, SD, SW	
		33	93901-24610	SCREW, TAPPING, 4X25	8					E, F, G	
		35	94050-10000	NUT, FLANGE, 10MM	8		8	8		ED, G1, G2, SD, SW	
					8					E, F, G	
					8		8			ED, G1, G2, SD, SW	
								4		ED, G1, G2, SD, SW	

2-H1

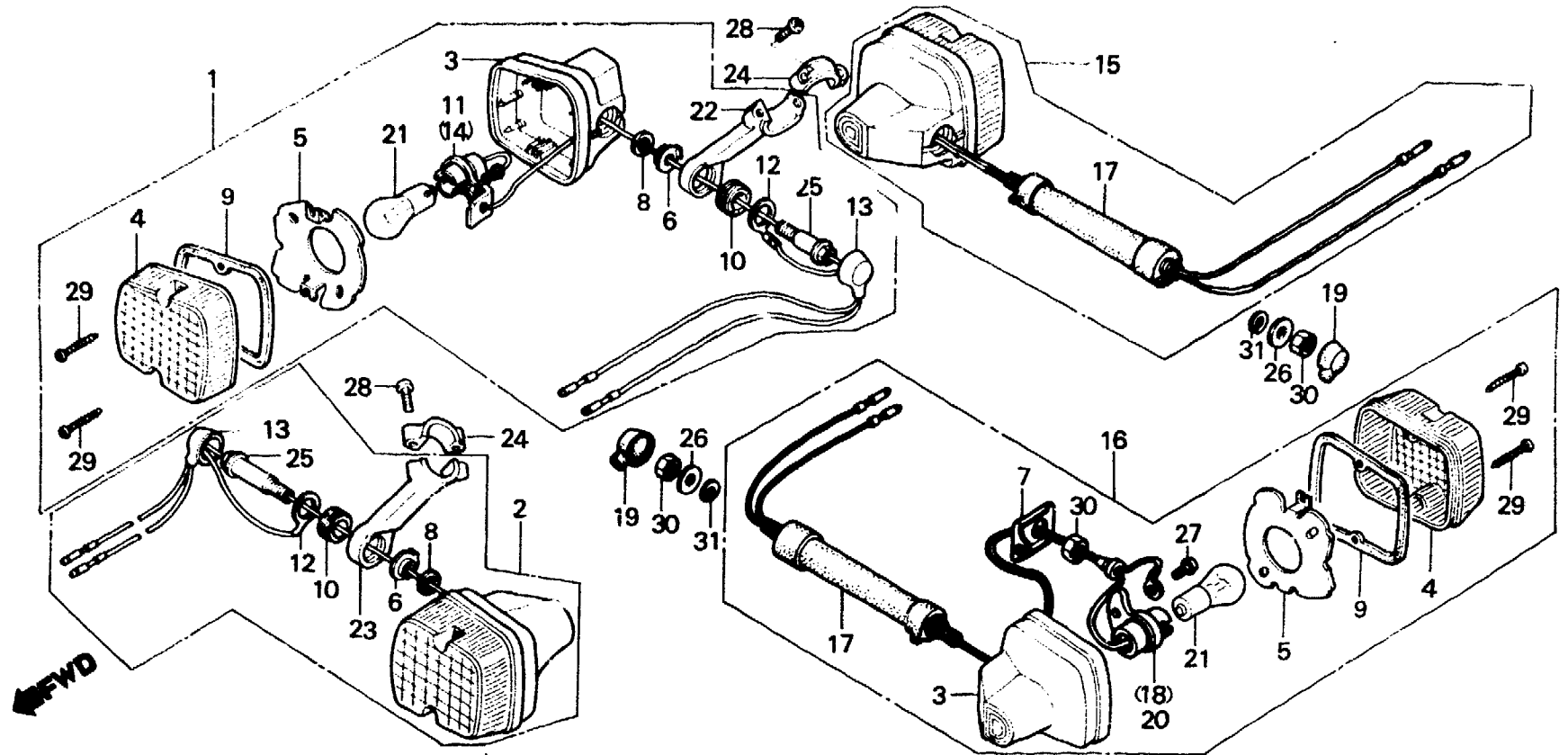
F-22-2

Winker
(XL250Rc-CM,DK,DM,SA,U)

Clignotant
(XL250Rc-CM,DK,DM,SA,U)

Blinker
(XL250Rc-CM,DK,DM,SA,U)

Luz intermitente
(XL250Rc-CM,DK,DM,SA,U)



BKB7-28

Service item	F.R.T.	Ref. No.	Part No.	Description	Reqd. No.				Serial No.	Area code
					S	Sz	SA	Sb Rc		
WINKER SET (ADD 0.1 FOR EACH.) INC. RELATIVE PART (EXC. RELATED PARTS BELOW)	0.2	1	33300-KB7-000	WINKER SET, R. FR.				1	DK,DM,SA,U	
			33300-MC4-670	WINKER SET, R. FR.				1	CM	
BULB, WINKER (WHEN SERVICING COMP., UNIT, F.R.T. IS 0.2.)	0.1	2	33350-KB7-000	WINKER SET, L. FR.				1	DK,DM,SA,U	
			33350-MC4-670	WINKER SET, L. FR.				1	CM	
		3	33401-428-003	BASE, WINKER				4	CM,DK,DM,SA,U	
		4	33402-428-671	LENS, WINKER				4	CM,DK,DM,SA,U	
		5	33403-428-671	REFLECTOR				4	CM	
			33403-443-003	REFLECTOR				4	DK,DM,SA,U	
		6	33404-437-000	STOPPER, FR. WINKER				2	CM,DK,DM,SA,U	
		7	33405-KB7-003	PLATE, SETTING				2	CM,DK,DM,SA,U	
		8	33406-428-003	SEAL, GASKET				2	CM,DK,DM,SA,U	
		9	33407-428-003	GASKET, LENS				4	CM,DK,DM,SA,U	
		10	33408-KB7-000	RUBBER, FR. WINKER MOUNTING				2	CM,DK,DM,SA,U	
		11	33410-428-671	SOCKET COMP., R. FR. WINKER				1	CM,DK,DM,SA,U	

2-H2

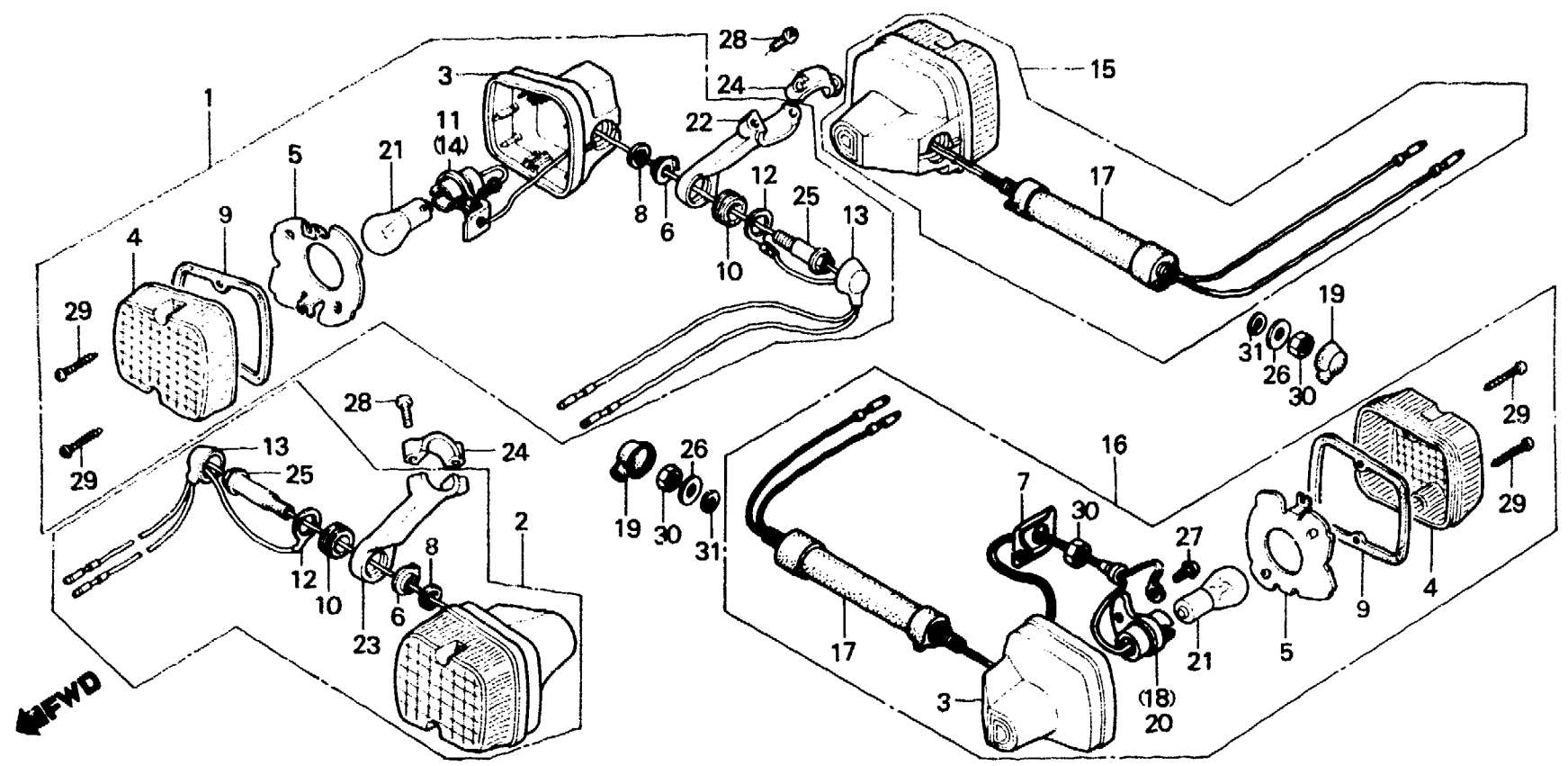
F-22-2

Winker
(XL250Rc-CM,DK,DM,SA,U)

Clignotant
(XL250Rc-CM,DK,DM,SA,U)

Blinker
(XL250Rc-CM,DK,DM,SA,U)

Luz intermitente
(XL250Rc-CM,DK,DM,SA,U)



BKB7-28

Service item	F.R.T.	Ref. No.	Part No.	Description	Reqd. No.					Serial No.	Area code
					S	Sz	SA	Sb	Rc		
		12	33415-428-010	CORD, WINKER EARTH					2		CM,DK,DM,SA,U
		13	33425-KB7-000	COVER, WINKER CORD					2		CM,DK,DM,SA,U
		14	33460-428-671	SOCKET COMP., L. FR. WINKER					1		CM,DK,DM,SA,U
		15	33500-KB7-000	WINKER SET, R. RR.					1		DK,DM,SA,U
			33500-MC4-670	WINKER SET, R. RR.					1		CM
		16	33550-KB7-000	WINKER SET, L. RR.					1		DK,DM,SA,U
			33550-MC4-670	WINKER SET, L. RR.					1		CM
		17	33605-KB7-003	STAY COMP., WINKER					2		CM,DK,DM,SA,U
		18	33610-KB7-000	SOCKET COMP., R. RR.					1		CM,DK,DM,SA,U
		19	33625-428-000	COVER, WINKER CORD					2		CM,DK,DM,SA,U
		20	33660-KB7-000	SOCKET COMP., L. RR.					1		CM,DK,DM,SA,U

2-H3

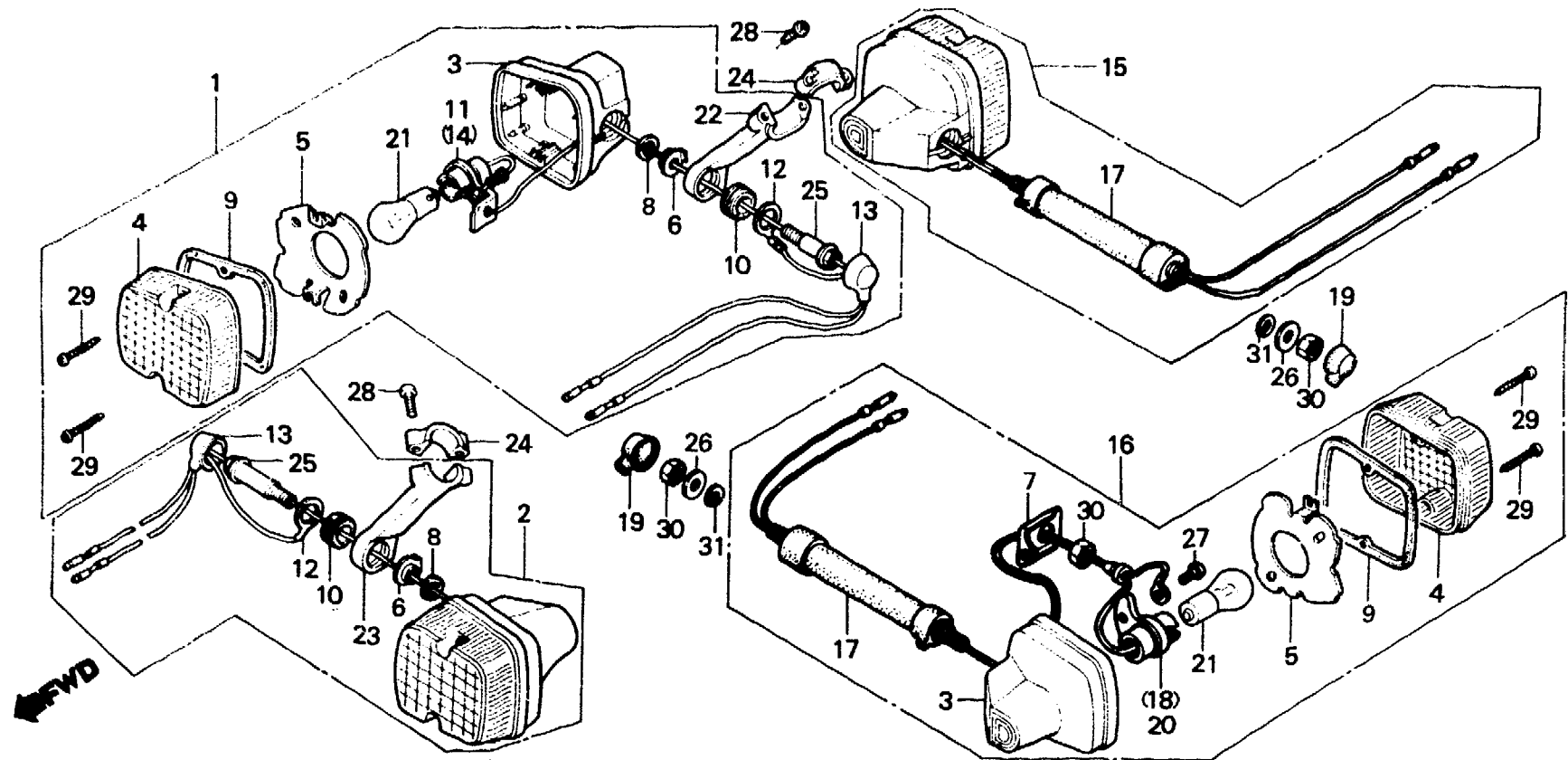
F-22-2

Winker
(XL250Rc-CM,DK,DM,SA,U)

Clignotant
(XL250Rc-CM,DK,DM,SA,U)

Blinker
(XL250Rc-CM,DK,DM,SA,U)

Luz intermitente
(XL250Rc-CM,DK,DM,SA,U)



BKB7-28

Service item	F.R.T.	Ref. No.	Part No.	Description	Reqd. No.					Serial No.	Area code
					S	Sz	SA	Sb	Rc		
		21	34905-268-671	BULB, WINKER (12V23W)					4		CM,DK,DM,SA,U
		22	53101-KB7-000	BRACKET, R. FR. WINKER					1		CM,DK,DM,SA,U
		23	53102-KB7-000	BRACKET, L. FR. WINKER					1		CM,DK,DM,SA,U
		24	53103-428-000	HOLDER, WINKER STAY					2		CM,DK,DM,SA,U
		25	90129-428-000	BOLT, FR. WINKER SETTING					2		CM,DK,DM,SA,U
		26	90202-KB7-000	WASHER, SPECIAL, 10MM					2		CM,DK,DM,SA,U
		27	93500-04008-0H	SCREW, PAN, 4X8					2		CM,DK,DM,SA,U
		28	93500-05016-0A	SCREW, PAN, 5X16					4		CM,DK,DM,SA,U
		29	93901-24610	SCREW, TAPPING, 4X25					8		CM,DK,DM,SA,U
		30	94001-10000-0S	NUT, HEX., 10MM					4		CM,DK,DM,SA,U
		31	94111-10700	WASHER, SPRING, 10MM					2		CM,DK,DM,SA,U

2-H4

F-22-3

Winker

(XL250Rc-B,E,
F1,F2,IT,SD)

Clignotant

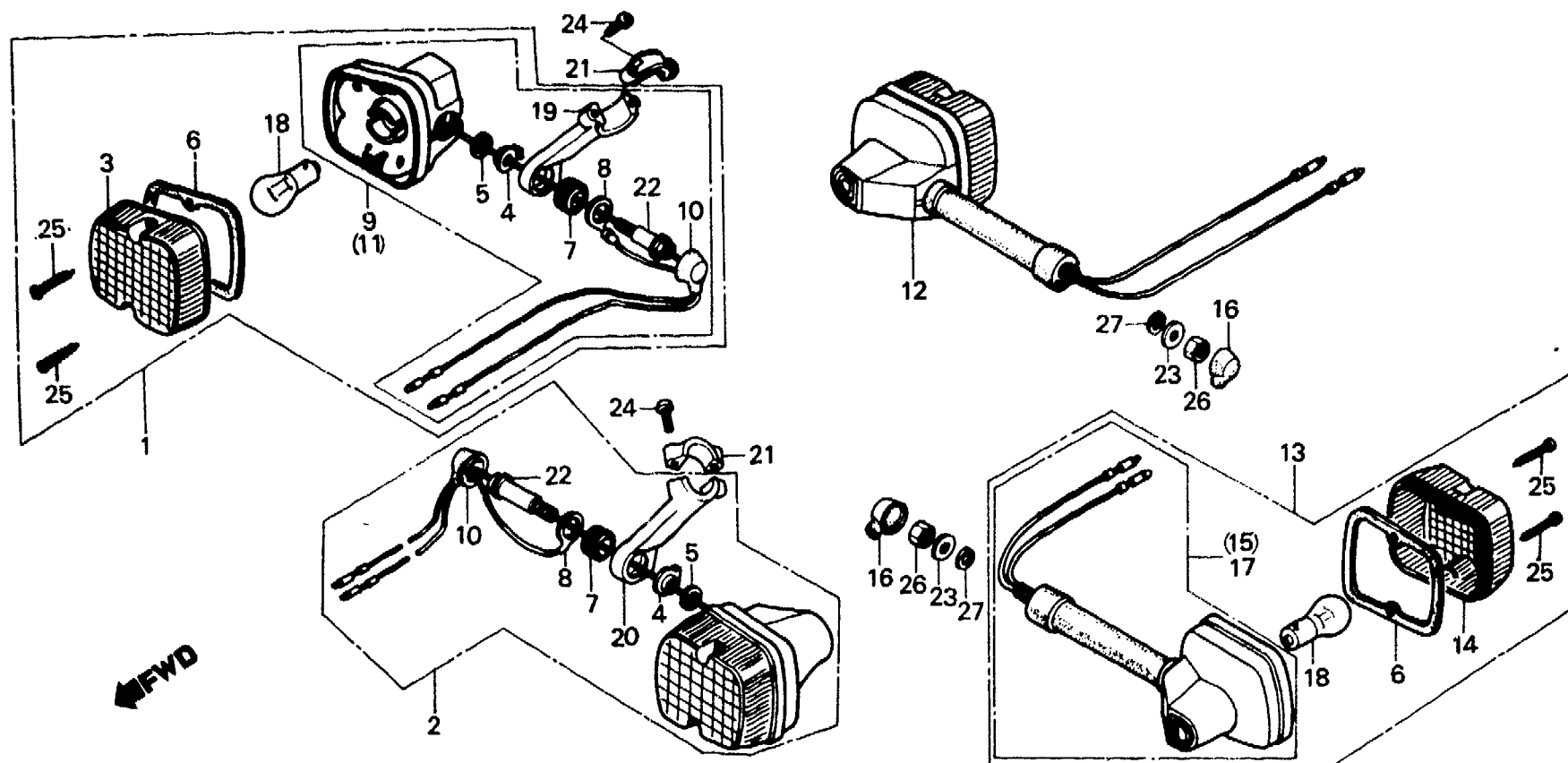
(XL250Rc-B,E,
F1,F2,IT,SD)

Blinker

(XL250Rc-B,E,
F1,F2,IT,SD)

Luz intermitente

(XL250Rc-B,E,
F1,F2,IT,SD)



BMC4-28

Service item	F.R.T.	Ref. No.	Part No.	Description	Reqd. No.					Serial No.	Area code
					S	Sz	SA	SB	Rc		
WINKER SET (ADD 0.1 FOR EACH.) INC. RELATIVE PART (EXC. RELATED PARTS BELOW)	0.2	1	33300-MC4-600	WINKER SET, R. FR.					1		B,E,F1,F2,IT,SD
		2	33350-MC4-600	WINKER SET, L. FR.					1		B,E,F1,F2,IT,SD
BULB (WHEN SERVICING COMP., UNIT, F.R.T. IS 0.2.)	0.1	3	33402-428-671	LENS, WINKER					2		B,E,F1,F2,IT,SD
		4	33404-437-000	STOPPER, FR. WINKER					2		B,E,F1,F2,IT,SD
		5	33406-428-003	SEAL, GASKET					2		B,E,F1,F2,IT,SD
		6	33407-428-003	GASKET, LENS					4		B,E,F1,F2,IT,SD
		7	33408-KB7-000	RUBBER, FR. WINKER MOUNTING					2		B,E,F1,F2,IT,SD
		8	33415-428-010	CORD, WINKER EARTH					2		B,E,F1,F2,IT,SD
		9	33420-MC4-600	BASE COMP., R. FR. WINKER					1		B,E,F1,F2,IT,SD
		10	33425-KB7-000	COVER, WINKER CORD					2		B,E,F1,F2,IT,SD
		11	33470-MC4-600	BASE COMP., L. FR. WINKER					1		B,E,F1,F2,IT,SD
		12	33500-MC4-600	WINKER SET, R. RR.					1		B,E,F1,F2,IT,SD

2-H5

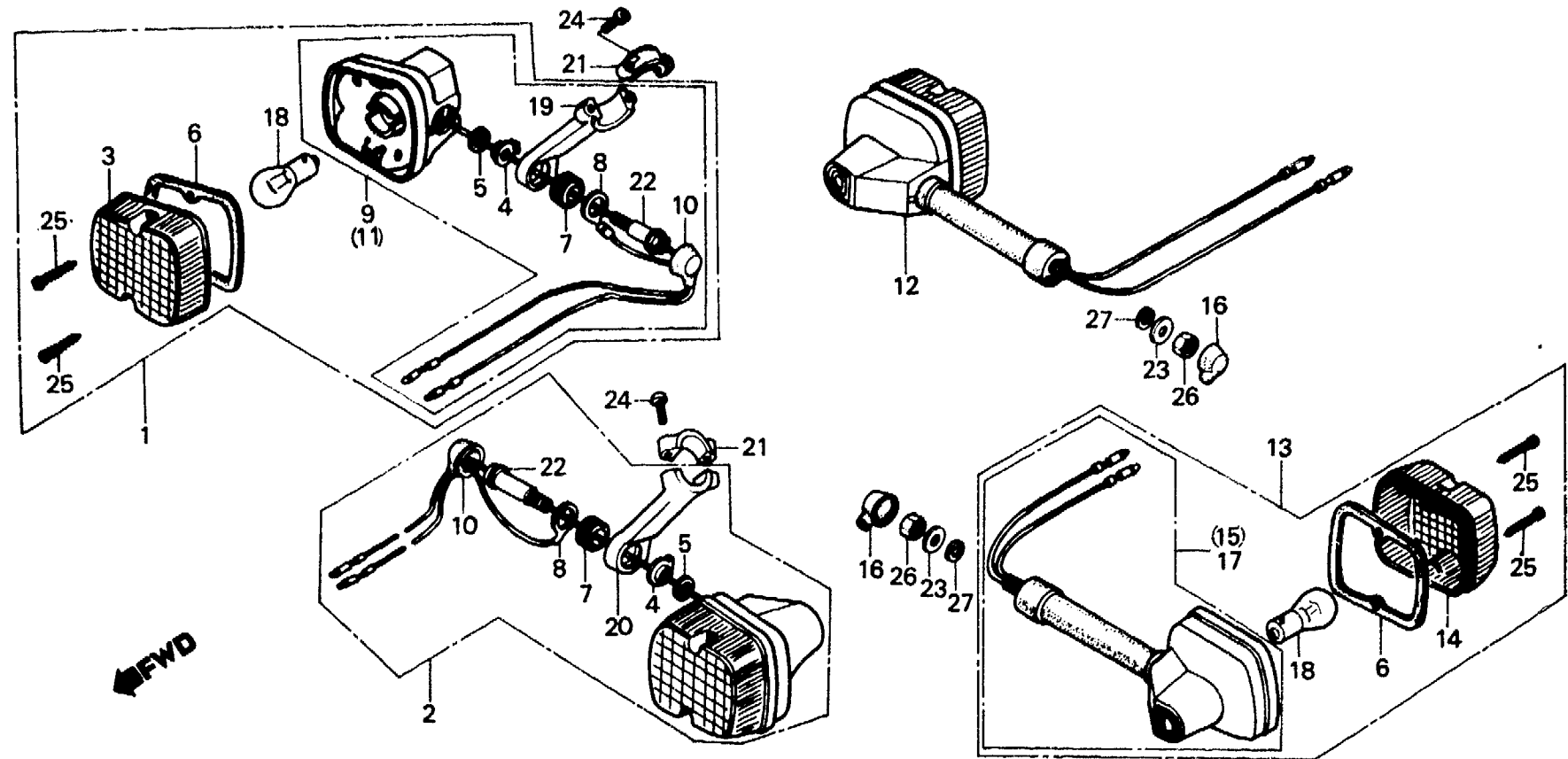
F-22-3

Winker
(XL250Rc-B,E.)
(F1,F2,IT,SD)

Clignotant
(XL250Rc-B,E.)
(F1,F2,IT,SD)

Blinker
(XL250Rc-B,E.)
(F1,F2,IT,SD)

Luz intermitente
(XL250Rc-B,E.)
(F1,F2,IT,SD)



BMC4-28

Service item	F.R.T.	Ref. No.	Part No.	Description	Reqd. No. XL250					Serial No.	Area code
					S	Sz	SA	Sb	Rc		
		13	33550-MC4-600	WINKER SET, L. RR.					1		B,E,F1,F2,IT,SD
		14	33602-443-611	LENS, WINKER					2		B,E,F1,F2,IT,SD
		15	33620-MC4-600	BASE COMP., R. RR. WINKER					1		B,E,F1,F2,IT,SD
		16	33625-428-000	COVER, WINKER CORD					2		B,E,F1,F2,IT,SD
		17	33670-MC4-600	BASE COMP., L. RR. WINKER					1		B,E,F1,F2,IT,SD
		18	34908-634-611	BULB (12V21W)					4		B,E,F1,F2,IT,SD
		19	53101-KB7-000	BRACKET, R. FR. WINKER					1		B,E,F1,F2,IT,SD
		20	53102-KB7-000	BRACKET, L. FR. WINKER					1		B,E,F1,F2,IT,SD
		21	53103-428-000	HOLDER, WINKER STAY					2		B,E,F1,F2,IT,SD
		22	90129-428-000	BOLT, FR. WINKER SETTING					2		B,E,F1,F2,IT,SD
		23	90202-KB7-000	WASHER, SPECIAL, 10MM					2		B,E,F1,F2,IT,SD

2-H6

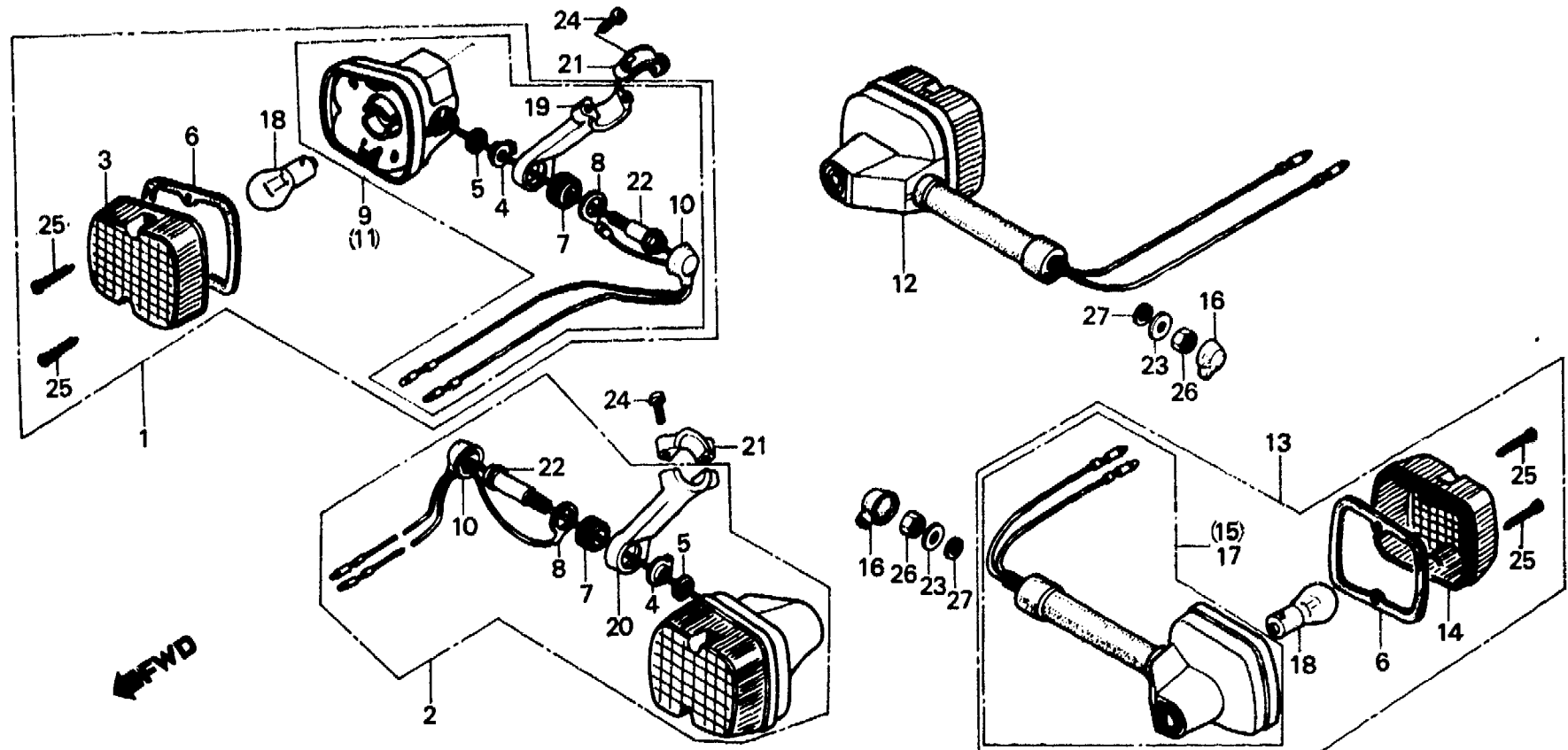
F-22-3

Winker
(XL250Rc-B,E,
F1,F2,IT,SD)

Clignotant
(XL250Rc-B,E,
F1,F2,IT,SD)

Blinker
(XL250Rc-B,E,
F1,F2,IT,SD)

Luz intermitente
(XL250Rc-B,E,
F1,F2,IT,SD)



BMC4-28

Service item	F.R.T.	Ref. No.	Part No.	Description	Reqd. No.					Serial No.	Area code
					S	Sz	SA	Sb	Rc		
		24	93500-05016-0A	SCREW, PAN, 5X16					4		B,E,F1,F2,IT,SD
		25	93901-24610	SCREW, TAPPING, 4X25					8		B,E,F1,F2,IT,SD
		26	94001-10000-0S	NUT, HEX., 10MM					2		B,E,F1,F2,IT,SD
		27	94111-10700	WASHER, SPRING, 10MM					2		B,E,F1,F2,IT,SD

2-H7

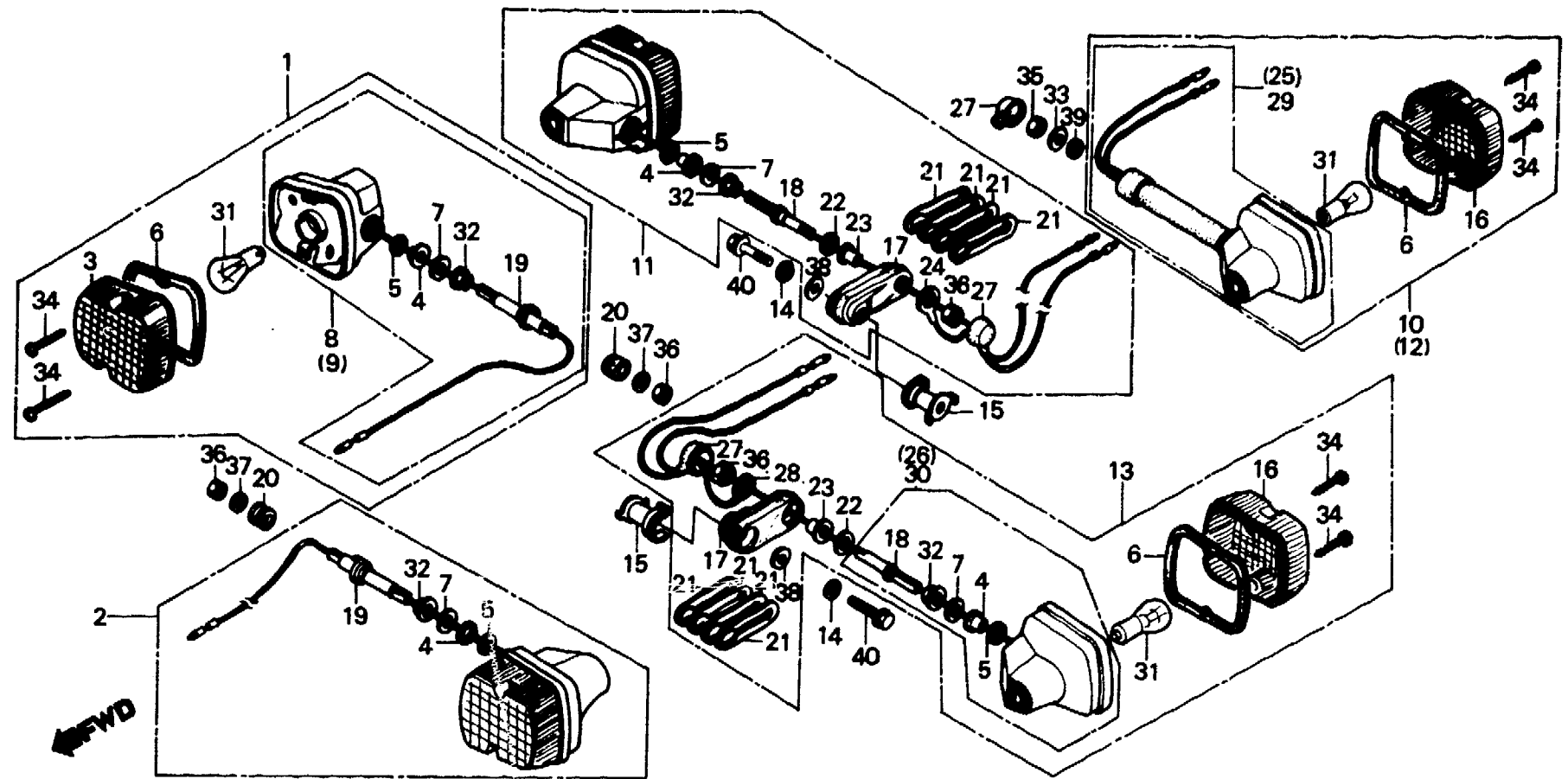
F-22-4

Winker
(XL250Rc-ED,G1,G2,SW)

Clignotant
(XL250Rc-ED,G1,G2,SW)

Blinker
(XL250Rc-ED,G1,G2,SW)

Luz intermitente
(XL250Rc-ED,G1,G2,SW)



BMC4-29

Service item	F.R.T.	Ref. No.	Part No.	Description	Reqd. No.					Serial No.	Area code
					S	Sz	SA	Sb	Rc		
WINKER SET (ADD 0.1 FOR EACH.) INC. RELATIVE PART (EXC. RELATED PARTS BELOW) BULB (WHEN SERVICING COMP., UNIT, F.R.T. IS 0.2.)	0.2	1	33300-MC4-610	WINKER SET, R. FR.					1		ED,G1,G2,SW
		2	33350-MC4-610	WINKER SET, L. FR.					1		ED,G1,G2,SW
	0.1	3	33402-428-671	LENS, WINKER					2		ED,G1,G2,SW
		4	33405-428-611	COLLAR, WINKER BASE					2		ED,SW
		5	33406-428-003	SEAL, GASKET					4		G1,G2
									2		ED,SW
									4		G1,G2
		6	33407-428-003	GASKET, LENS					4		ED,G1,G2,SW
		7	33411-428-611	WASHER, WINKER BASE					2		ED,SW
		8	33420-MC4-610	BASE COMP., R. FR. WINKER					4		G1,G2
9	33470-MC4-610	BASE COMP., L. FR. WINKER					1		ED,G1,G2,SW		
10	33500-MC4-600	WINKER SET, R. RR.					1		ED,G1,G2,SW		

1982.01.10

E

2-H7

570

2-H8

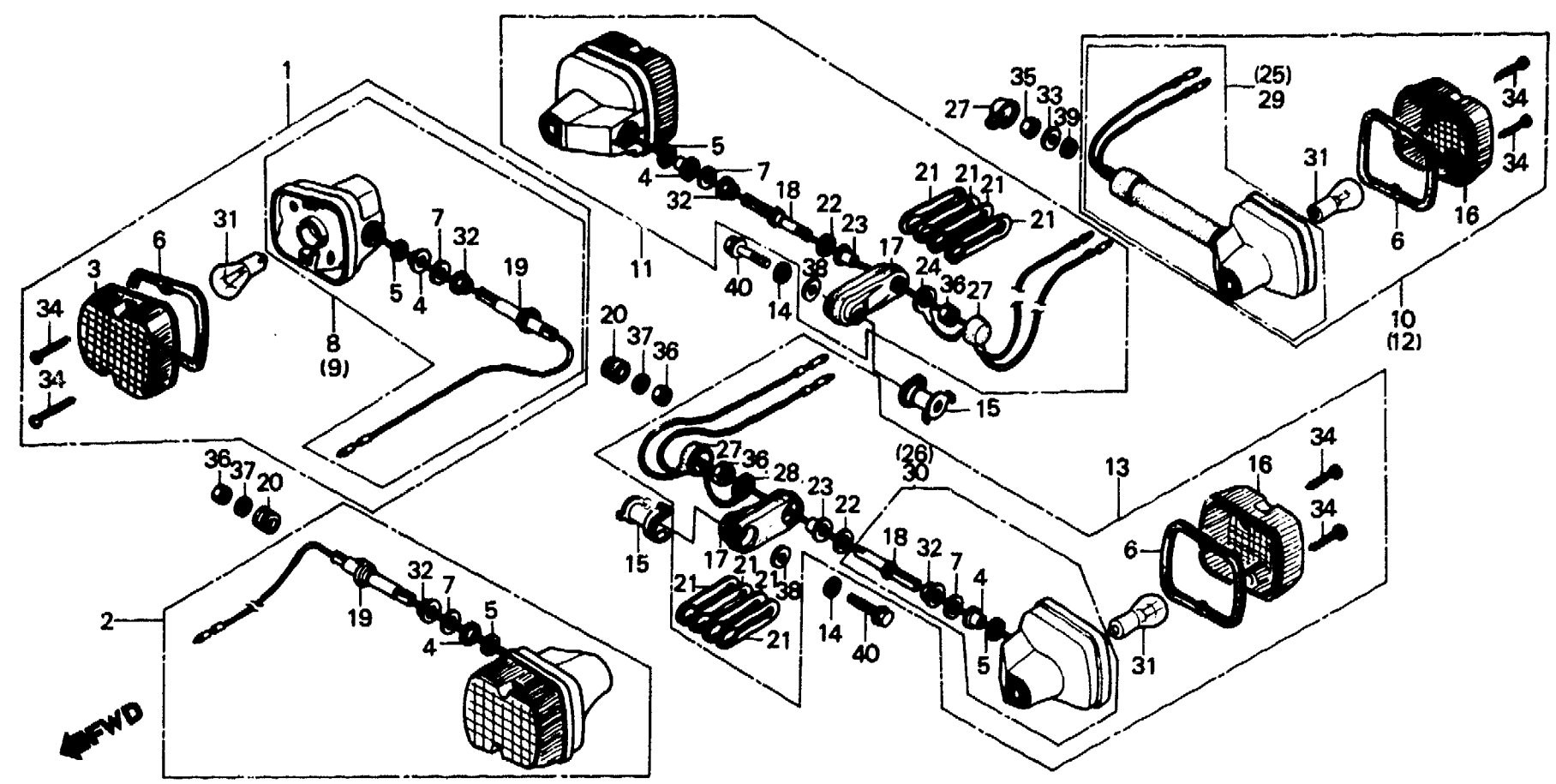
F-22-4

Winker
(XL250Rc-ED,G1,G2,SW)

Clignotant
(XL250Rc-ED,G1,G2,SW)

Blinker
(XL250Rc-ED,G1,G2,SW)

Luz intermitente
(XL250Rc-ED,G1,G2,SW)



BMC4-29

Service item	F.R.T.	Ref. No.	Part No.	Description	Reqd. No. XL250					Serial No.	Area code
					S	Sz	SA	Sb	Rc		
		11	33500-MC4-610	WINKER SET, R. RR.					1		G1,G2
		12	33550-MC4-600	WINKER SET, L. RR.					1		ED,SW
		13	33550-MC4-610	WINKER SET, L. RR.					1		G1,G2
		14	33601-428-000	WASHER, RR. WINKER					2		G1,G2
		15	33602-437-000	STAY, RR. WINKER					2		G1,G2
		16	33602-443-611	LENS, WINKER					2		ED,G1,G2,SW
		17	33604-437-000	RUBBER, RR. WINKER					2		G1,G2
		18	33605-KB7-610	BOLT, RR. WINKER					2		G1,G2
		19	33605-428-610	BOLT, RR. WINKER					2		ED,G1,G2,SW
		20	33606-428-610	RUBBER, WINKER BOLT MOUNTING					2		ED,G1,G2,SW
		21	33607-437-000	SPRING, RR. WINKER					8		G1,G2