

2-E4

F-18-2

Pedal • Kick starter arm • Step

(XL250Rc-B,CM,DK,DM,E,
ED,F1,F2,IT,SA,SD,SW,U)

Pédale • Bras de kick de démarrage •

Repose pieds

(XL250Rc-B,CM,DK,DM,E,
ED,F1,F2,IT,SA,SD,SW,U)

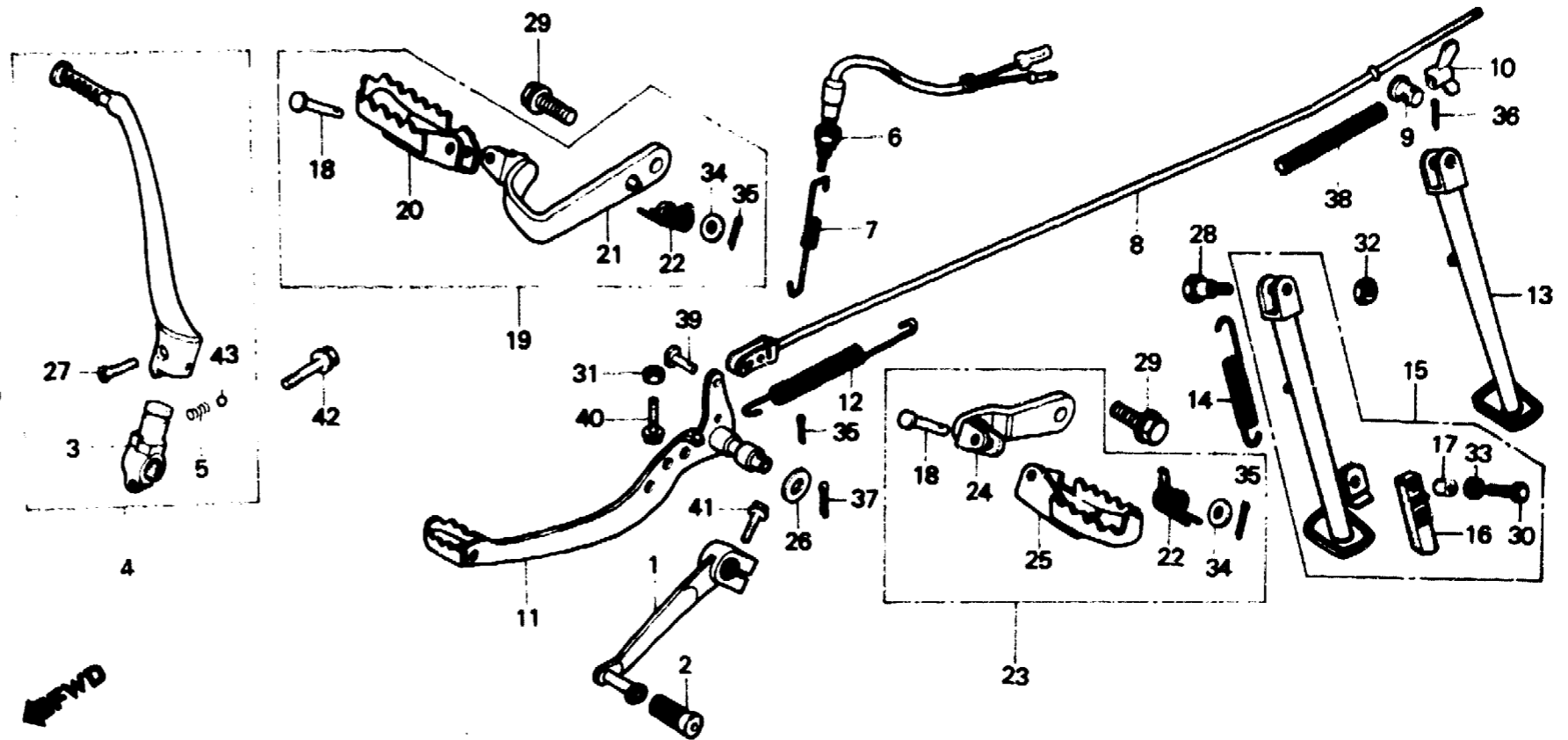
Pedal • Kickstarterarm • Tritt

(XL250Rc-B,CM,DK,DM,E,
ED,F1,F2,IT,SA,SD,SW,U)

Pedal • Brazo de arranque de pie •

Estribo

(XL250Rc-B,CM,DK,DM,E,
ED,F1,F2,IT,SA,SD,SW,U)



BKB7-16A

Service item	F.R.T.	Ref. No.	Part No.	Description	Reqd. No.					Serial No.	Area code
					S	Sz	SA	Se	Rc		
		41	95700-06020-00	BOLT, FLANGE, 6X20					1		B,CM,DK,DM,E,ED,F1,F2 IT,SA,SD,SW,U
		42	95700-08028	BOLT, FLANGE, 8X28					1		B,CM,DK,DM,E,ED,F1,F2 IT,SA,SD,SW,U
		43	96211-08000	BALL, STEEL, #8 (1/4)					1		B,CM,DK,DM,E,ED,F1,F2 IT,SA,SD,SW,U

2-E5

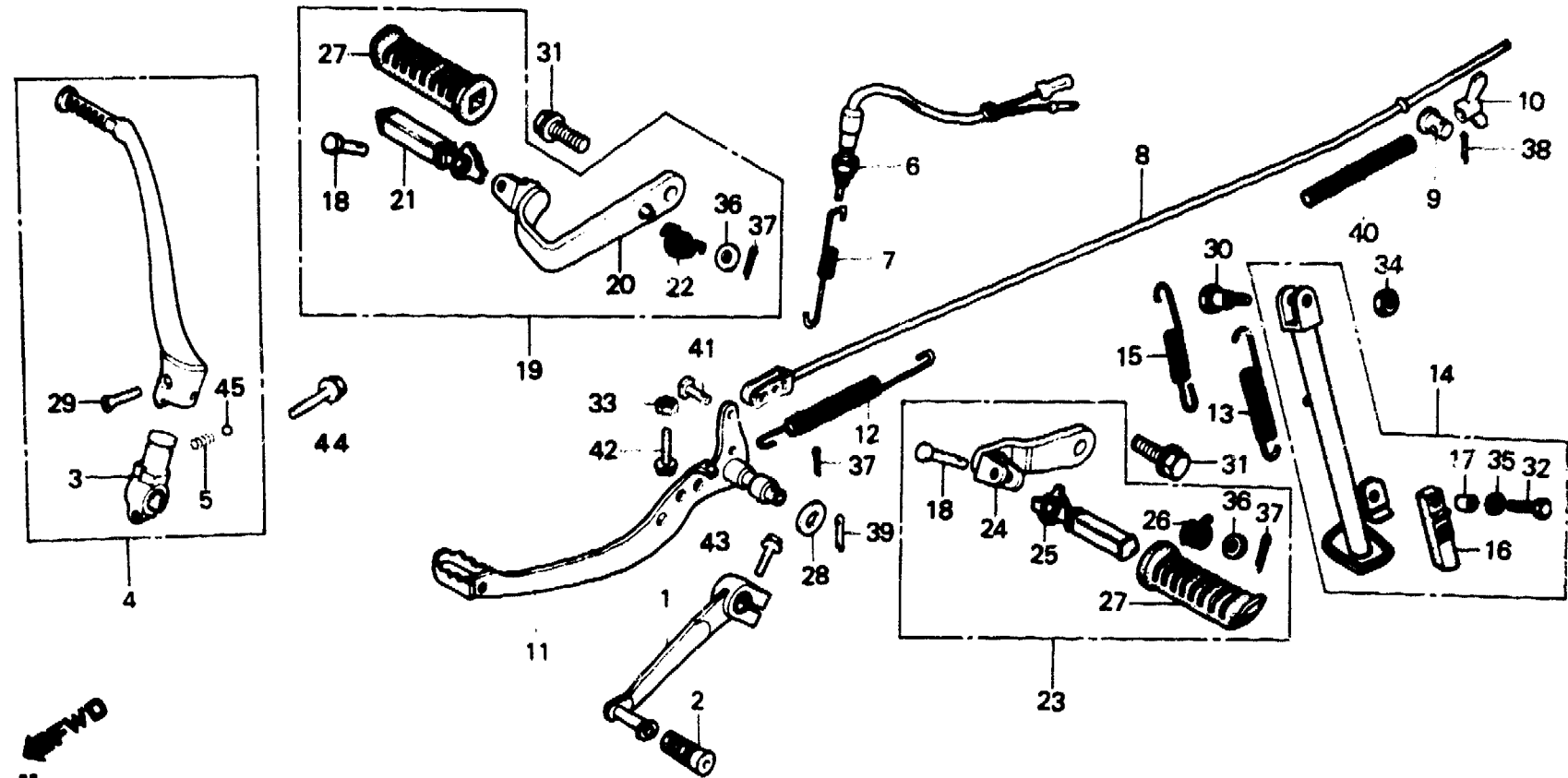
F-18-3

**Pedal • Kick starter arm • Step
(XL250Rc-G1,G2)**

**Pédale • Bras de kick de démarrage •
Repose pieds
(XL250Rc-G1,G2)**

**Pedal • Kickstarterarm • Tritt
(XL250Rc-G1,G2)**

**Pedal • Brazo de arranque de pie • Estribo
(XL250Rc-G1,G2)**



BKB7-27

Service item	F.R.T.	Ref. No.	Part No.	Description	Reqd. No.					Serial No.	Area code
					S	Sz	SA	Sb	Rc		
PEDAL, GEAR CHANGE	0.1	1	24700-KB7-000	PEDAL, GEAR CHANGE					1		G1,G2
ARM ASSY., KICK STARTER		2	24781-419-000	RUBBER, GEAR CHANGE PEDAL					1		G1,G2
SPRING, BRAKE PEDAL		3	28241-428-871	JOINT, KICK ARM					1		G1,G2
SPRING, SIDE STAND		4	28300-428-871	ARM ASSY., KICK STARTER					1		G1,G2
ARM COMP., STEP		5	28333-300-000	SPRING, KICK STARTER STOPPER					1		G1,G2
INC. RELATIVE PART	0.2	6	35350-KB7-000	SWITCH ASSY., RR. STOP					1		G1,G2
SWITCH ASSY., RR. STOP		7	35357-KB7-000	SPRING, STOP SWITCH					1		G1,G2
ROD, RR. BRAKE		8	43451-KB7-000	ROD, RR. BRAKE					1		G1,G2
PEDAL COMP., BRAKE		9	43453-MC4-000	JOINT, BRAKE ARM					1		G1,G2
BAR ASSY., SIDE STAND		10	43459-434-000	NUT, BRAKE ADJUSTING					1		G1,G2
		11	46510-KB7-000	PEDAL COMP., BRAKE					1		G1,G2
		12	46511-KB7-000	SPRING, BRAKE PEDAL					1		G1,G2
		13	50535-429-000	SPRING, SIDE STAND					1		G1,G2
		14	50540-MC4-670	BAR ASSY., SIDE STAND					1		G1,G2

2-E6

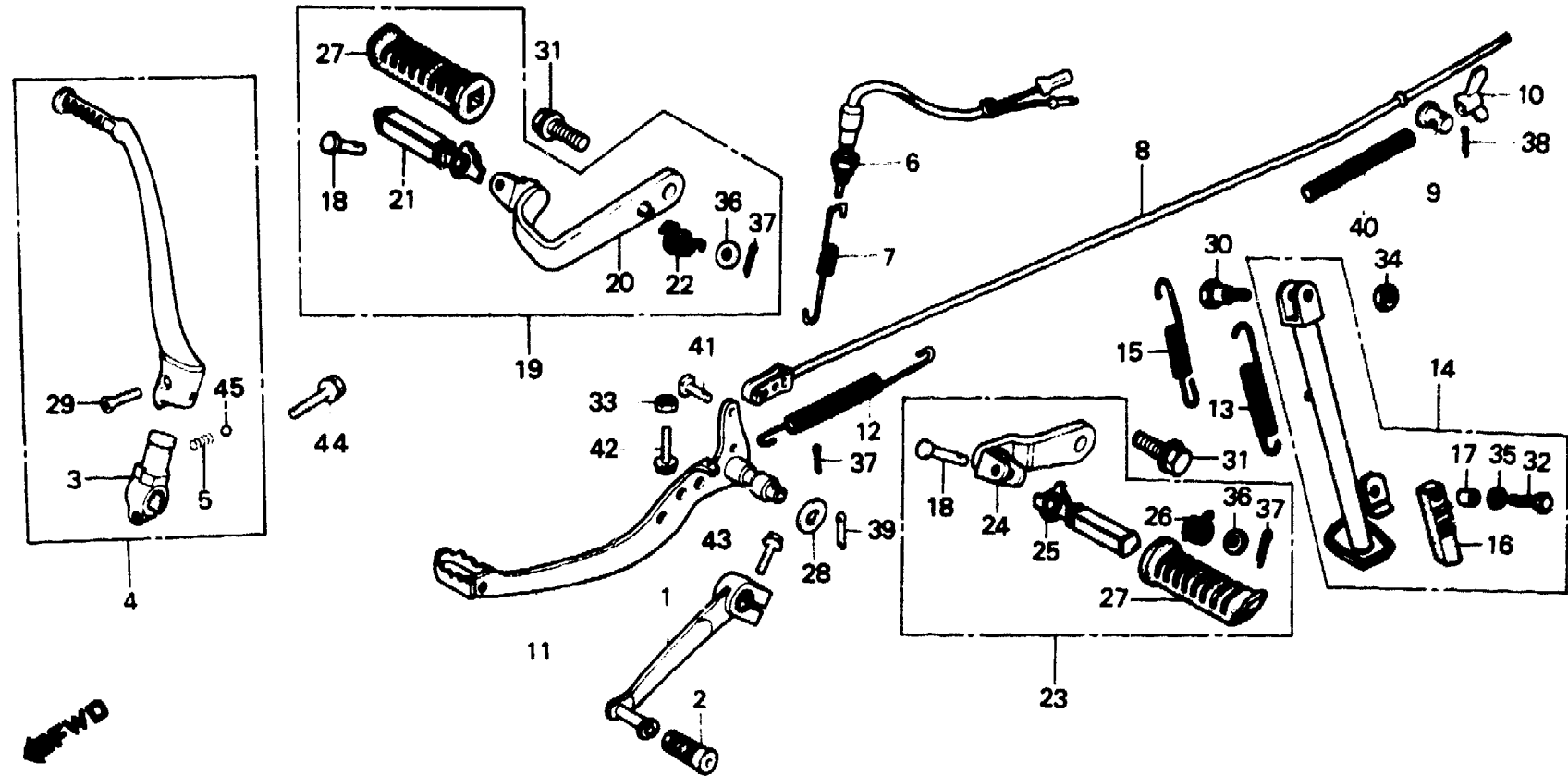
F-18-3

**Pedal • Kick starter arm • Step
(XL250Rc-G1,G2)**

**Pédale • Bras de kick de démarrage •
Repose pieds
(XL250Rc-G1,G2)**

**Pedal • Kickstarterarm • Tritt
(XL250Rc-G1,G2)**

**Pedal • Brazo de arranque de pie • Estribo
(XL250Rc-G1,G2)**



BKB7-27

Service item	F.R.T.	Ref. No.	Part No.	Description	Reqd. No. XL250					Serial No.	Area code
					S	Sz	SA	Sa	Rc		
		15	50542-438-000	SUB SPRING, SIDE STAND					1		G1,G2
		16	50548-356-700	RUBBER, STAND					1		G1,G2
		17	50549-356-700	COLLAR, STAND RUBBER SETTING					1		G1,G2
		18	50603-033-000	PIN, STEP BAR JOINT					2		G1,G2
		19	50610-KB7-610	ARM ASSY., R. STEP					1		G1,G2
		20	50615-KB7-000	ARM COMP., R. STEP					1		G1,G2
		21	50616-312-010	ARM COMP., R. STEP					1		G1,G2
		22	50617-329-000	SPRING, R. STEP RETURN					1		G1,G2
		23	50620-KB7-610	ARM ASSY., L. STEP					1		G1,G2
		24	50624-KB7-000	ARM COMP., L. STEP					1		G1,G2
		25	50642-312-010	ARM COMP., L. STEP					1		G1,G2
		26	50644-329-000	SPRING, L. STEP RETURN					1		G1,G2
		27	50661-312-000	RUBBER, STEP					2		G1,G2
		28	53312-657-000	BUSH, WASHER					1		G1,G2

2-E7

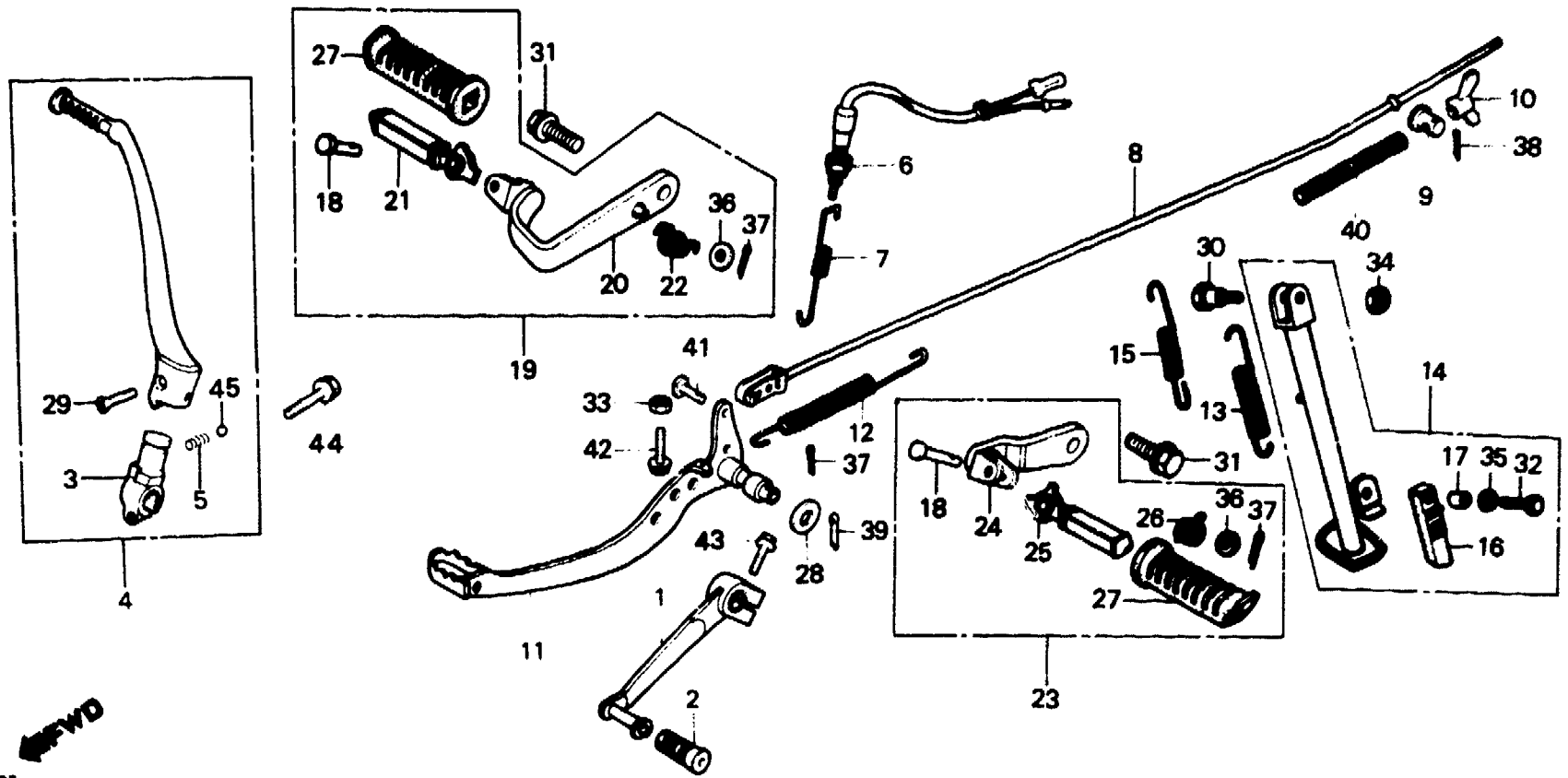
F-18-3

**Pedal • Kick starter arm • Step
(XL250Rc-G1,G2)**

**Pédale • Bras de kick de démarrage •
Repose pieds
(XL250Rc-G1,G2)**

**Pedal • Kickstarterarm • Tritt
(XL250Rc-G1,G2)**

**Pedal • Brazo de arranque de pie • Estribo
(XL250Rc-G1,G2)**



BK87-27

Service item	F.R.T.	Ref. No.	Part No.	Description	Reqd. No.					Serial No.	Area code
					S	Sz	SA	Sa	Rc		
		29	90101-329-000	BOLT, KICK ARM						1	G1,G2
		30	90108-283-000	SCREW, SIDE STAND PIVOT						1	G1,G2
		31	90130-429-000	BOLT, STEP SETTING						2	G1,G2
		32	92000-06028	BOLT, HEX., 6X28						1	G1,G2
		33	94001-06000	NUT, HEX., 6MM						1	G1,G2
		34	94031-10000	NUT, HEX., 10MM						1	G1,G2
		35	94101-06000	WASHER, PLAIN, 6MM						1	G1,G2
		36	94101-08000	WASHER, PLAIN, 8MM						2	G1,G2
		37	94201-16150	PIN, SPLIT, 1.6X15						3	G1,G2
		38	94201-20200	PIN, SPLIT, 2.0X20						1	G1,G2
		39	94201-30400	PIN, SPLIT, 3.0X40						1	G1,G2
		40	95014-73100	SPRING A, BRAKE ROD						1	G1,G2
		41	95015-52000	PIN B, BRAKE ROD JOINT						1	G1,G2
		42	95700-06016-00	BOLT, FLANGE, 6X16						1	G1,G2
		43	95700-06020-00	BOLT, FLANGE, 6X20						1	G1,G2

2-E8

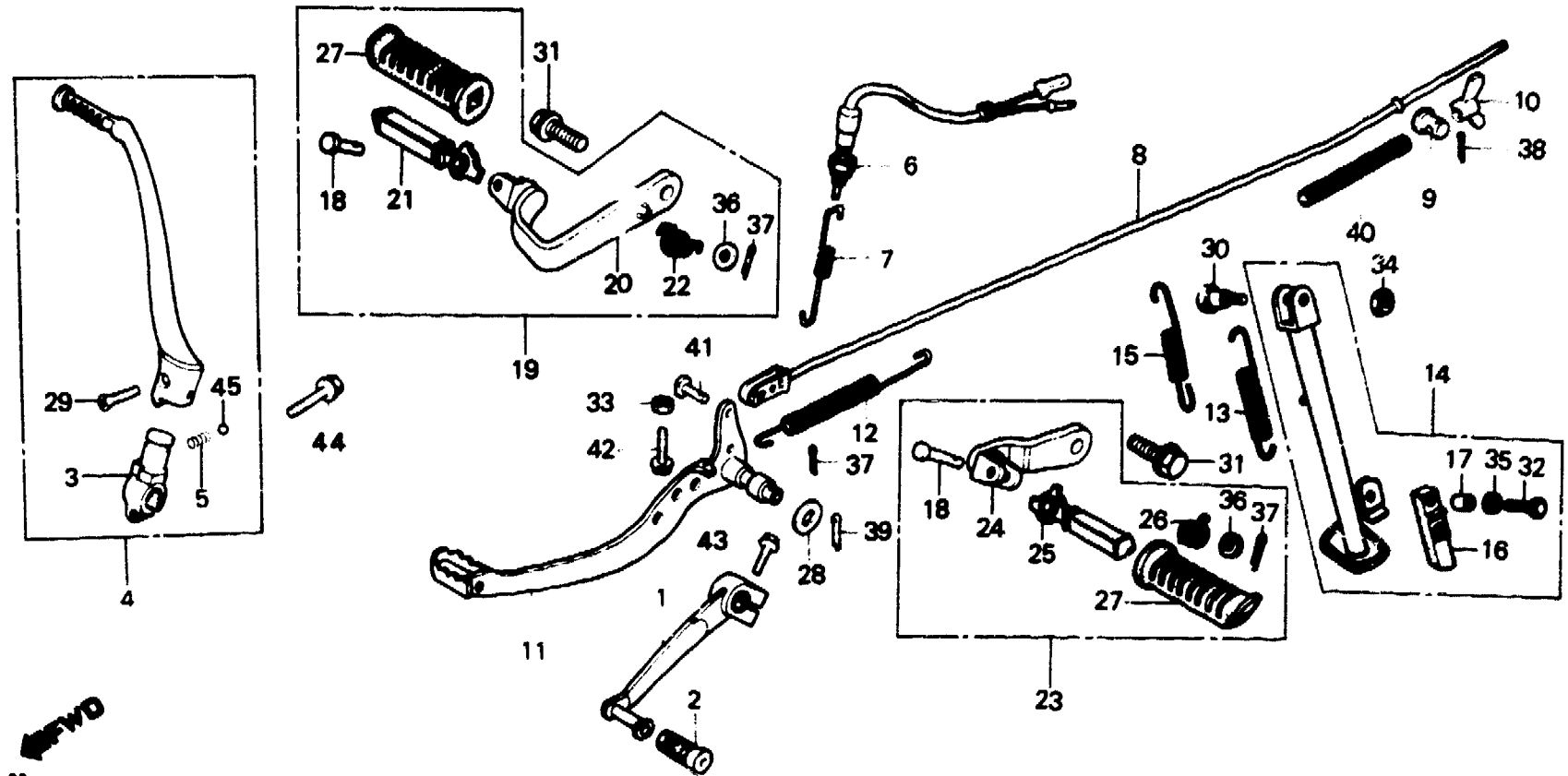
F-18-3

**Pedal • Kick starter arm • Step
(XL250Rc-G1,G2)**

**Pédale • Bras de kick de démarrage •
Repose pieds
(XL250Rc-G1,G2)**

**Pedal • Kickstarterarm • Tritt
(XL250Rc-G1,G2)**

**Pedal • Brazo de arranque de pie • Estribo
(XL250Rc-G1,G2)**



BKB7-27

Service item	F.R.T.	Ref. No.	Part No.	Description	Reqd. No.					Serial No.	Area code
					S	Sz	SA	Se	Rc		
		44	95700-08028	BOLT, FLANGE, 8X28					1		G1,G2
		45	96211-08000	BALL, STEEL, #8 (1/4)					1		G1,G2

2-E9

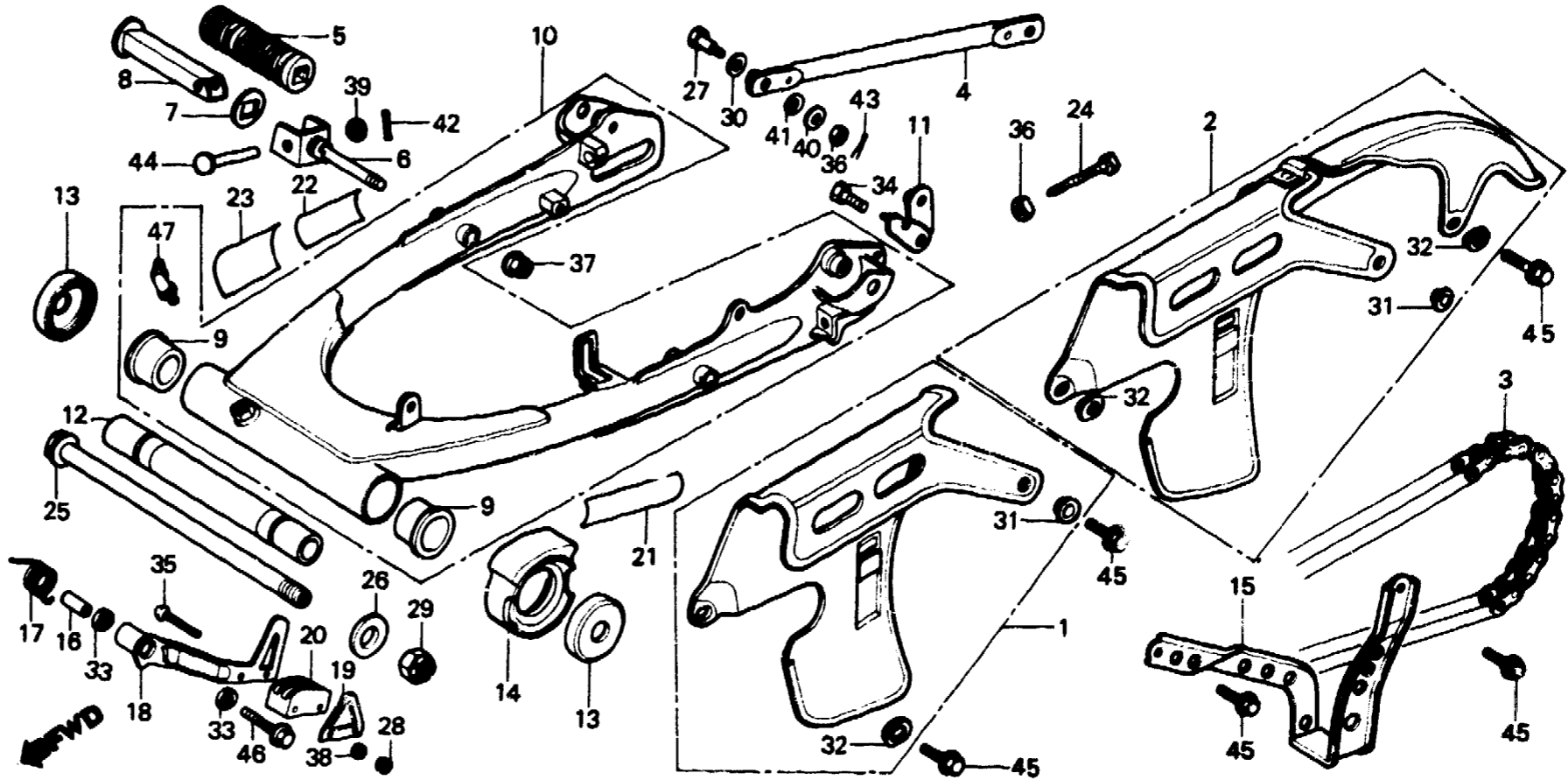
F-19

**Rear fork • Chain case
(XL250S•SZ•SA•SB)**

**Fourche arrière •
Carter de chaîne
(XL250S•SZ•SA•SB)**

**Hintere Schwinge • Kettenschutz
(XL250S•SZ•SA•SB)**

**Horquilla trasera • Caja de cadena
(XL250S•SZ•SA•SB)**



B428-32B

Service item	F.R.T.	Ref. No.	Part No.	Description	Reqd. No.				Serial No.	Area code
					S	Sz	SA	Sb		
CASE, DRIVE CHAIN	0.1	1	40510-428-000	CASE, DRIVE CHAIN	1	1	1	1		CM,DK,DM,SA
BAR, PILLION STEP INC. RELATIVE PART		2	40510-428-610	CASE COMP., DRIVE CHAIN	1		1	1		B,E,ED,F,F1,F2,G,G1 G2,SD,SW,U
GUARD COMP., CHAIN		3	40530-428-003	CHAIN, DRIVE (102L DAIDO)	1	1	1	1		
SLIPPER, TENSIONER		4	43431-435-000	ARM, RR. BRAKE STOPPER						1
CHAIN, DRIVE	0.5	5	50710-377-000	RUBBER, PILLION STEP	2	2	2	2		
COLLAR, RR. FORK CENTER		6	50711-428-000	BRACKET, PILLION STEP	2	2	2	2		
SLIDER, DRIVE CHAIN		7	50712-413-000	WASHER, PILLION STEP	2	2	2	2		
ARM, RR. BRAKE STOPPER	0.2	8	50715-413-000	BAR, PILLION STEP	2	2	2	2		
TENSIONER COMP., CHAIN		9	52109-357-006	BUSH, PIVOT THRUST	2					
BUSH, PIVOT THRUST (ONE OR ALL)	0.8				2					
FORK ASSY., RR.	0.6								5019448	CM DK,DM,E,ED,F,G,SA,SW U
						2			5108304	

2-E10

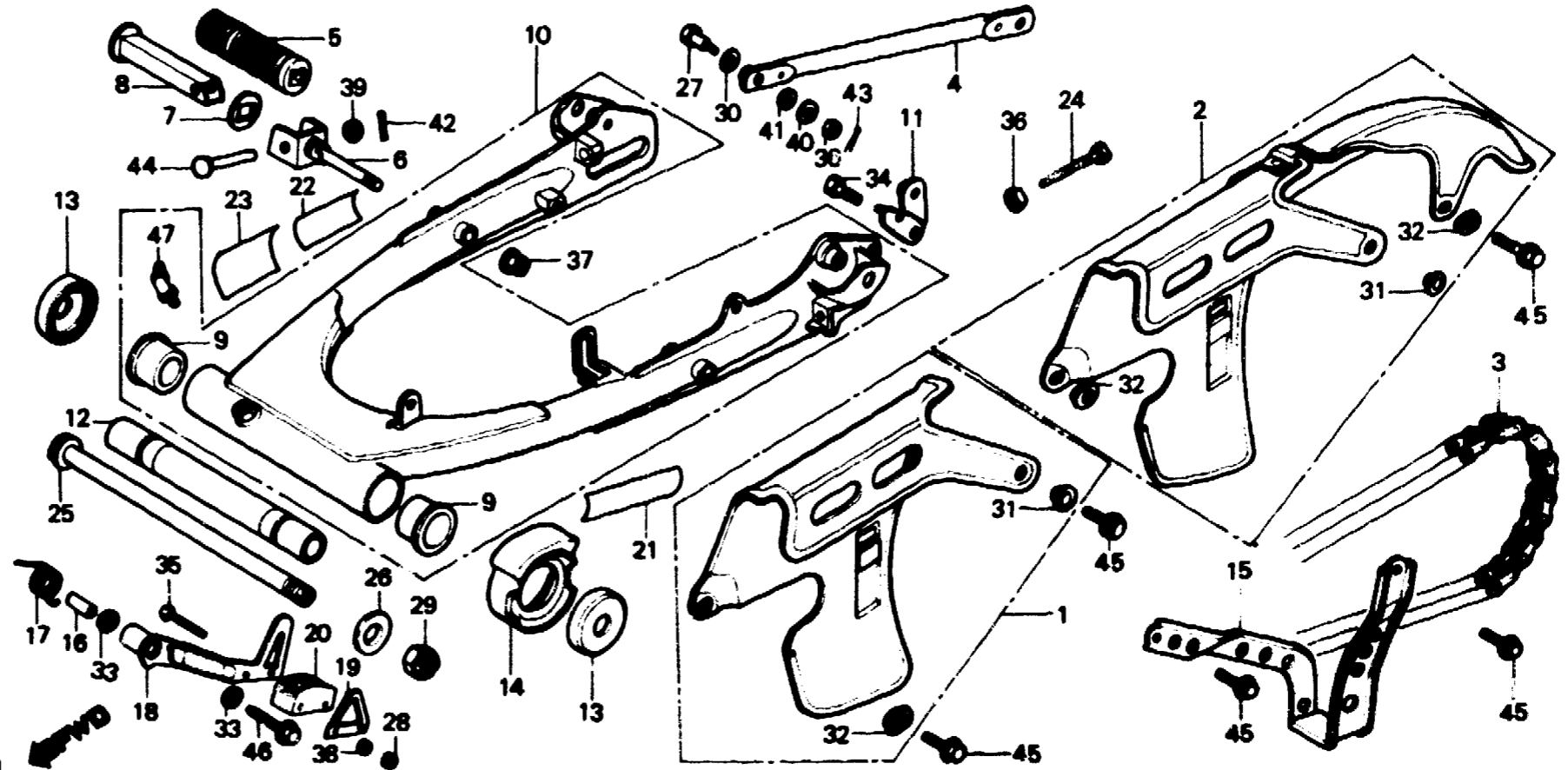
F-19

**Rear fork • Chain case
(XL250S•SZ•SA•SB)**

**Fourche arrière •
Carter de chaîne
(XL250S•SZ•SA•SB)**

**Hintere Schwinge • Kettenschutz
(XL250S•SZ•SA•SB)**

**Horquilla trasera • Caja de cadena
(XL250S•SZ•SA•SB)**



B428-32B

Service item	F.R.T.	Ref. No.	Part No.	Description	Reqd. No.				Serial No.	Area code
					S	Sz	SA	SB		
			52109-357-310	BUSH, PIVOT THRUST	2				5019449	DK,DM,E,ED,F,G,SA,SW U
									5108305	
10			52110-428-000ZA	FORK ASSY., RR. *NH-1*	1		2	2	5019448	CM DK,DM,E,ED,F,G,SA,SW U
			52110-428-010ZA	FORK ASSY., RR. *NH-1*	1				5107184	
									5019449	DK,DM,E,ED,F,G,SA,SW U
									5107185	
			52100-428-830ZA	FORK ASSY., RR. *NH-1*				1		B,DK,DM,E,ED,F1,F2,G1 G2,SA,SD,SW,U
			52110-428-840ZB	FORK ASSY., RR. *NH-35M*				1		CM
11			52111-428-610	STAY, CHAIN CASE SETTING	1	1				B,E,ED,F,F1,F2,G,G1 G2,SD,SW,U

1982.01.10

E

2-E10

2-E11

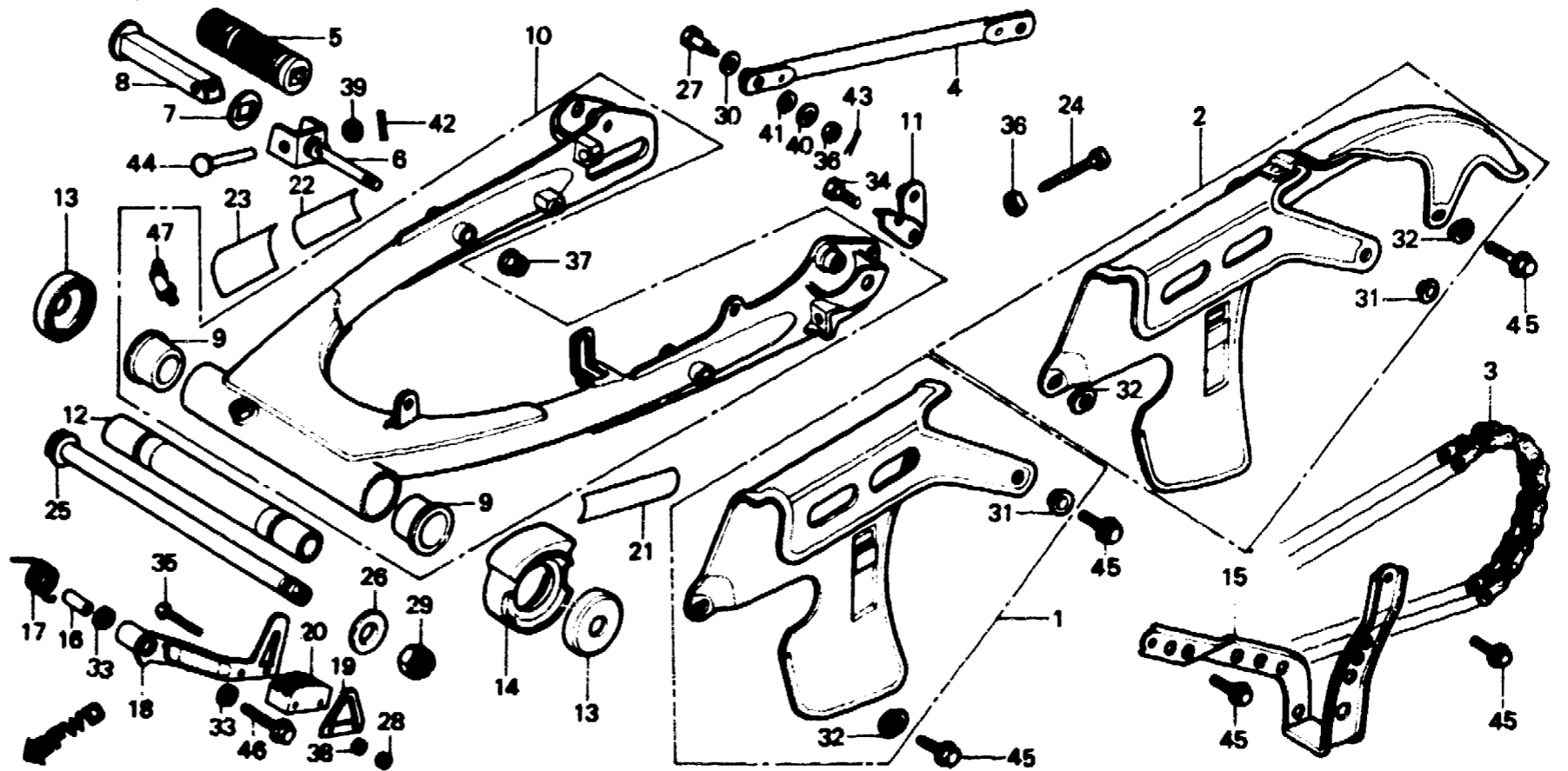
F-19

**Rear fork • Chain case
(XL250S•Sz•SA•Sb)**

**Fourche arrière •
Carter de chaîne
(XL250S•Sz•SA•Sb)**

**Hintere Schwinge • Kettenschutz
(XL250S•Sz•SA•Sb)**

**Horquilla trasera • Caja de cadena
(XL250S•Sz•SA•Sb)**



B428-32B

Service item	F.R.T.	Ref. No.	Part No.	Description	Reqd. No. XL250					Serial No.	Area code
					S	Sz	SA	Sb	Rc		
		12	52141-391-670	COLLAR, RR. FORK CENTER	1						CM
					1					5018028	DK,DM,E,ED,F,G,SA,SW U
			52141-391-671	COLLAR, RR. FORK CENTER	1					5018029	DK,DM,E,ED,F,G,SA,SW U
										5107114	
										5107115	
		13	52144-356-003	CAP, RR. FORK DUST SEAL	2	2	2	1			
			52144-356-005	CAP, RR. FORK DUST SEAL	2	2	2	2			
		14	52155-428-000	SLIDER, DRIVE CHAIN	1	1	1	1			
		15	52156-428-000	GUARD COMP., CHAIN	1	1	1	1			
		16	52171-434-020	COLLAR, CHAIN TENSIONER							B,DK,DM,E,ED,F1,F2,G1 G2,SA,SD,SW,U
		17	52174-434-000	SPRING, CHAIN TENSIONER							B,DK,DM,E,ED,F1,F2,G1 G2,SA,SD,SW,U

2-E12

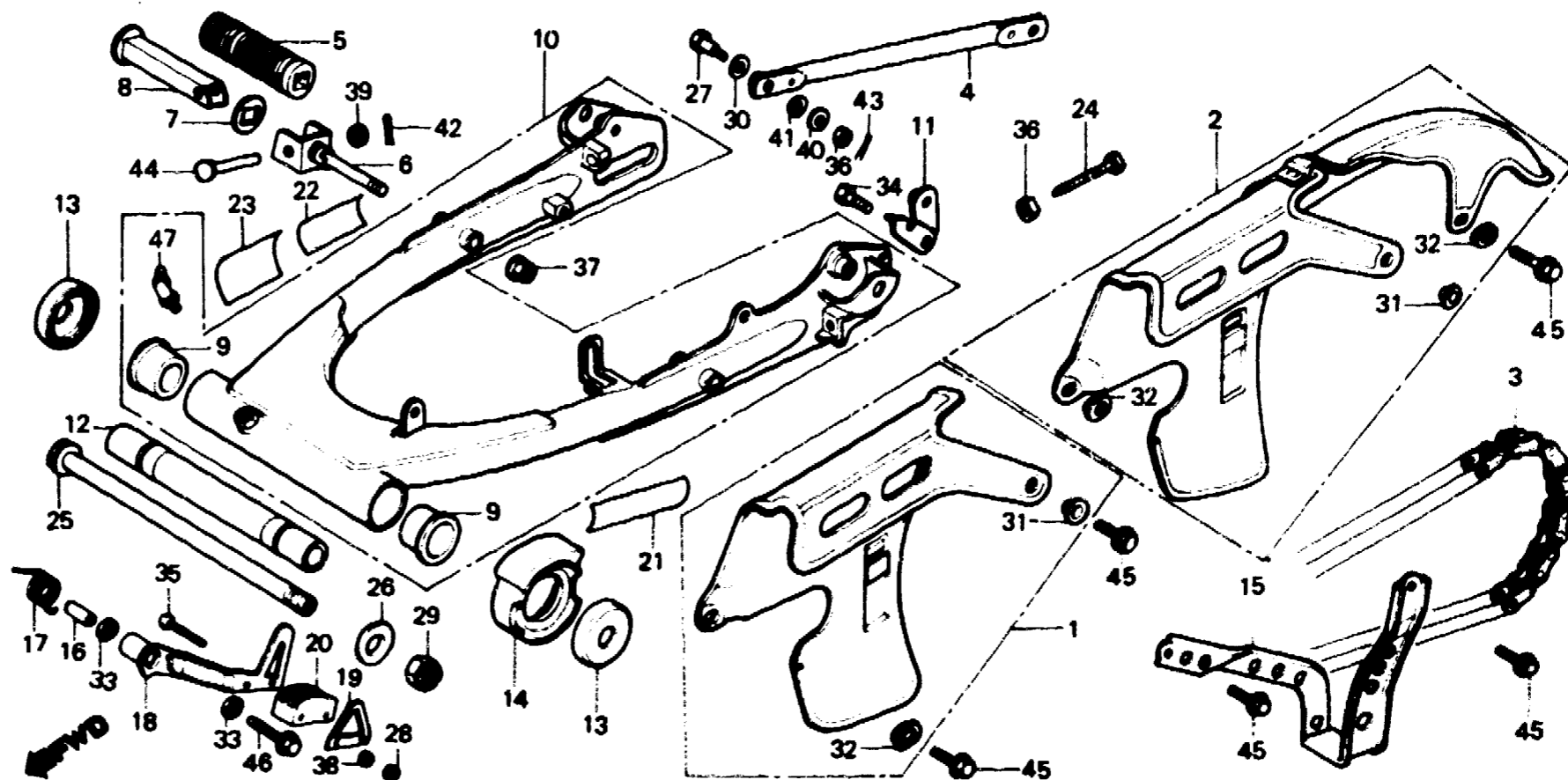
F-19

**Rear fork • Chain case
(XL250S•SZ•SA•SB)**

**Fourche arrière •
Carter de chaîne
(XL250S•SZ•SA•SB)**

**Hintere Schwinge • Kettenschutz
(XL250S•SZ•SA•SB)**

**Horquilla trasera • Caja de cadena
(XL250S•SZ•SA•SB)**



B423 328

Service item	F.R.T.	Ref. No.	Part No.	Description	Reqd. No.					Serial No.	Area code
					XL250						
					S	Sz	SA	Sb	Rc		
		18	52181-435-760	TENSIONER COMP., CHAIN					1		B,DK,DM,E,ED,F1,F2,G1 G2,SA,SD,SW,U
		19	52182-435-760	PLATE, TENSIONER					1		B,DK,DM,E,ED,F1,F2,G1 G2,SA,SD,SW,U
		20	52183-435-760	SLIPPER, TENSIONER					1		B,DK,DM,E,ED,F1,F2,G1 G2,SA,SD,SW,U
		21	87503-428-721	MARK, TIRE CAUTION	1						CM
			87505-428-600	MARK, TIRE CAUTION	1						E,ED,G,SW
			87505-428-620	MARK, TIRE CAUTION	1						F
			87505-428-660	MARK, TIRE CAUTION	1						SA
			87505-428-681	MARK, TIRE CAUTION	1						DK,DM,U
			87505-428-770	MARK, TIRE CAUTION		1					CM
			87505-428-870	MARK, TIRE CAUTION				1			CM
			87505-428-890	MARK, TIRE CAUTION				1			B,DK,DM,E,ED,G1,G2,SD SW,U
			87505-428-910	MARK, TIRE CAUTION				1			F1,F2
			87505-428-930	MARK, TIRE CAUTION				1			SA
			87505-428-980	MARK, TIRE CAUTION				1			CM
			87505-428-730	MARK, TIRE CAUTION					1		CM
			87505-428-750	MARK, TIRE CAUTION					1		CM

2-E13

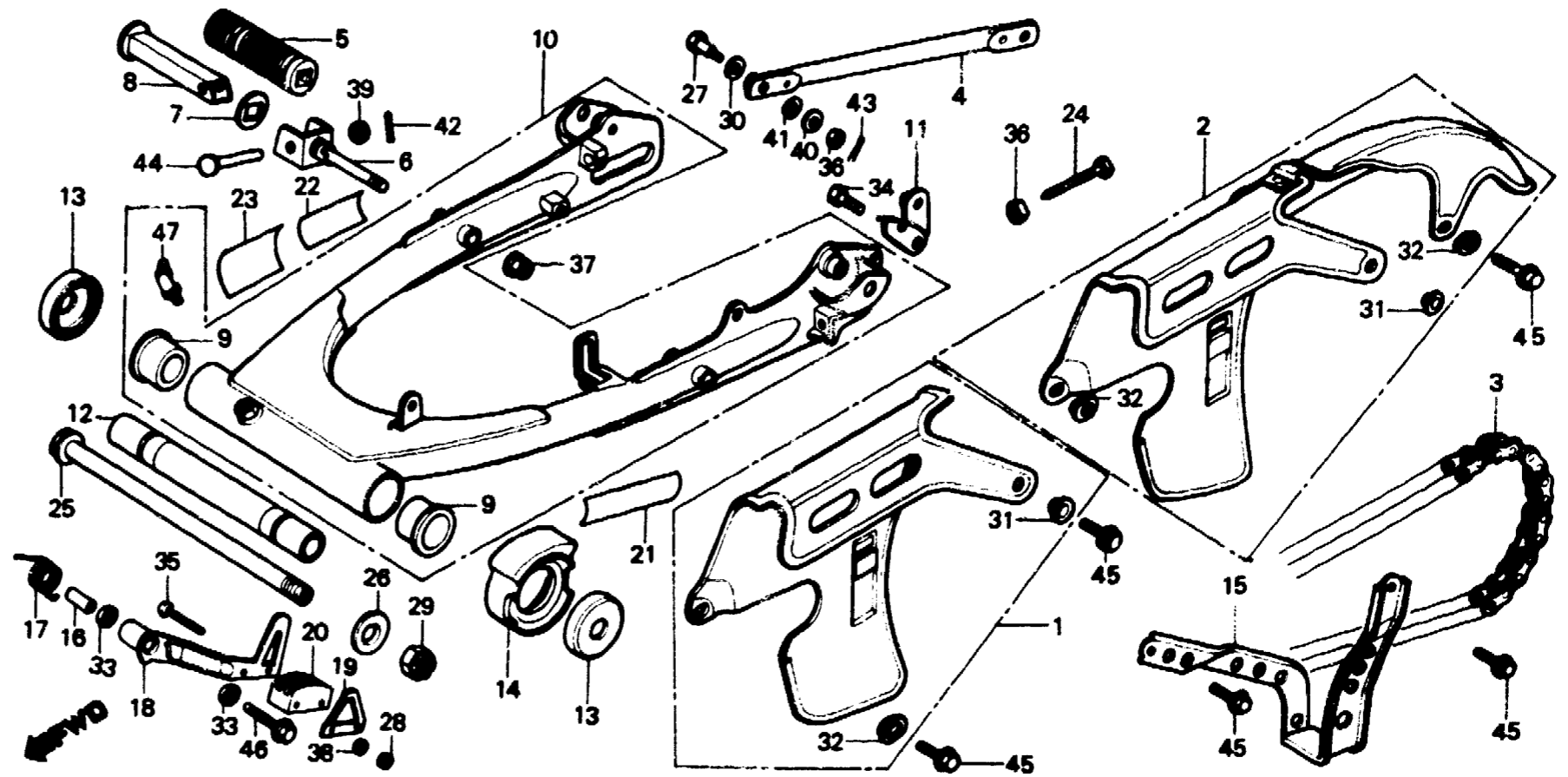
F-19

**Rear fork • Chain case
(XL250S•SZ•SA•SB)**

**Fourche arrière •
Carter de chaîne
(XL250S•SZ•SA•SB)**

**Hintere Schwinge • Kettenschutz
(XL250S•SZ•SA•SB)**

**Horquilla trasera • Caja de cadena
(XL250S•SZ•SA•SB)**



B428-328

Service item	F.R.T.	Ref. No.	Part No.	Description	Reqd. No.				Serial No.	Area code
					S	Sz	SA	Sb		
			87505-428-830	MARK, TIRE CAUTION					1	B,DK,DM,E,ED,G1,G2,SD SW,U
			87505-428-940	MARK, TIRE CAUTION					1	F1,F2
			87505-428-960	MARK, TIRE CAUTION					1	SA
		22	87504-028-670	MARK, MUFFLER CAUTION	1	1	1	1	1	CM
			87504-428-720	MARK, MUFFLER CAUTION (FRENCH)	1	1	1	1	1	CM
		23	87506-428-620	MARK, BATTERY CAUTION (FRENCH)	1	1	1			CM,F,F1,F2
			87506-428-670	MARK, BATTERY CAUTION	1	1	1			B,CM,DK,DM,E,ED,G,G1 G2,SA,SD,SW,U
			87506-427-700	MARK, BATTERY CAUTION					1	B,CM,DK,DM,E,ED,G1,G2 SA,SD,SW,U
			87506-427-750	MARK, BATTERY CAUTION					1	CM,F1,F2
		24	90119-300-000	BOLT, CHAIN ADJUSTING	2	2	2	2		
		25	90121-428-000	BOLT, RR. FORK PIVOT	1	1				
			90121-428-870	BOLT, RR. FORK PIVOT					1 1	

1982.01.10

E

2-E13

2-E14

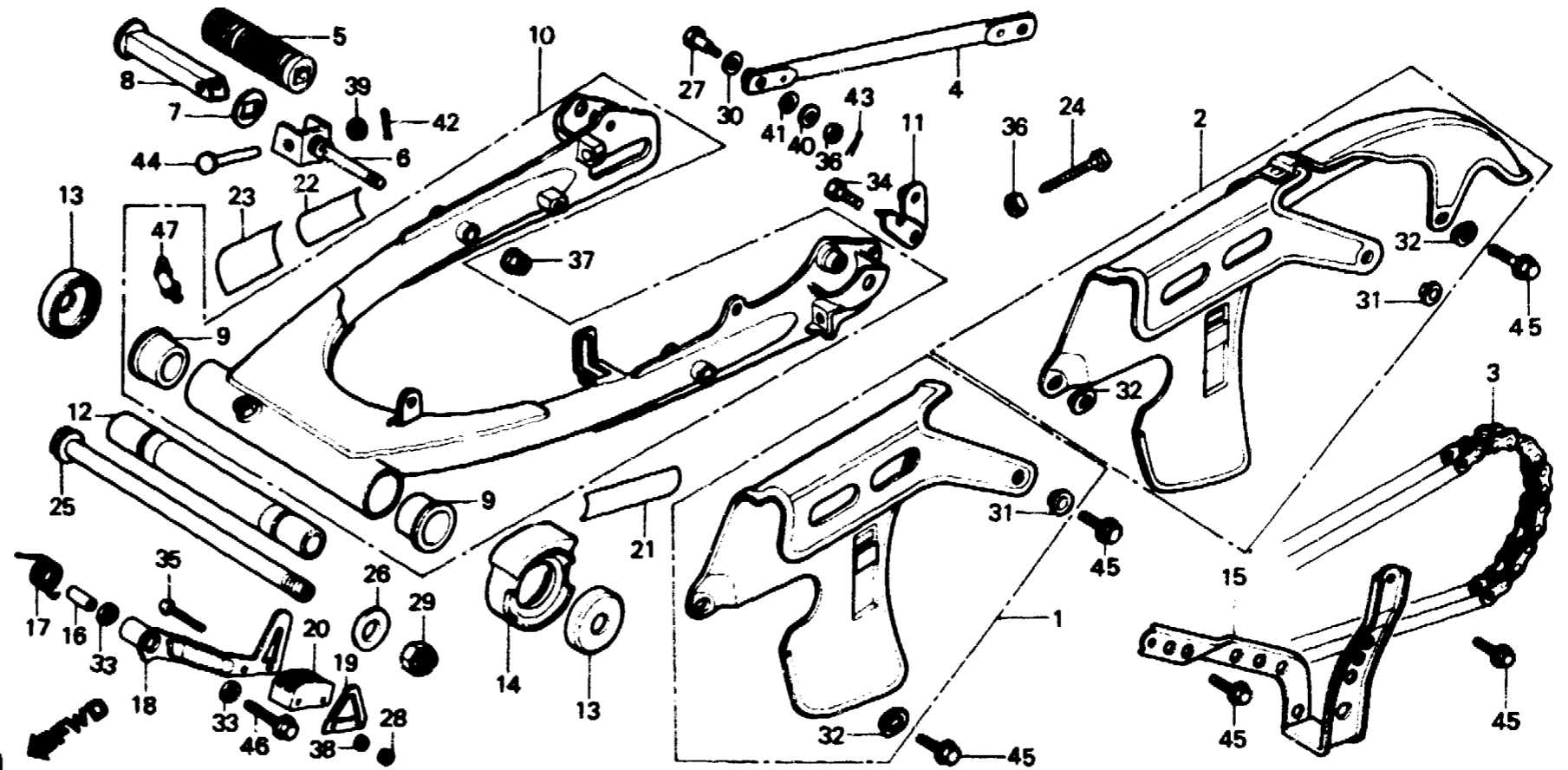
F-19

**Rear fork • Chain case
(XL250S•Sz•SA•SB)**

**Fourche arrière •
Carter de chaîne
(XL250S•Sz•SA•SB)**

**Hintere Schwinge • Kettenschutz
(XL250S•Sz•SA•SB)**

**Horquilla trasera • Caja de cadena
(XL250S•Sz•SA•SB)**



B428-32B

Service item	F.R.T.	Ref. No.	Part No.	Description	Reqd. No. XL250					Serial No.	Area code
					S	Sz	SA	Ss	Rc		
		26	90122-428-000	WASHER, PIVOT BOLT	1	1	1	1			
		27	90127-400-000	BOLT, RR. BRAKE STOPPER					1		
		28	90302-435-761	NUT, HEX., 5MM					2		B,DK,DM,E,ED,F1,F2,G1 G2,SA,SD,SW,U
		29	90354-268-000	NUT, SELF LOCK, 14MM	1	1	1	1			
		30	90452-283-000	WASHER, THRUST, 10MM					1		
		31	90512-300-000	WASHER, 6X20	1	1	1	1			
		32	90513-323-000	WASHER, 6X9	2		2	2			B,E,ED,F,F1,F2,G,G1 G2,SD,SW,U
		33	91201-434-003	OIL SEAL, 14X20X3	1	1	1	1			CM,DK,DM,SA B,DK,DM,E,ED,F1,F2,G1 G2,SA,SD,SW,U
			91201-434-005	OIL SEAL, 14X20X3					2		B,DK,DM,E,ED,F1,F2,G1 G2,SA,SD,SW,U
		34	92000-06008	BOLT, HEX., 6X8	1	1	1	1			
		35	93500-05040-0A	SCREW, PAN, 5X40					2		B,DK,DM,E,ED,F1,F2,G1 G2,SA,SD,SW,U
		36	94001-08000-0S	NUT, HEX., 8MM	2	2	2	3			

2-E15

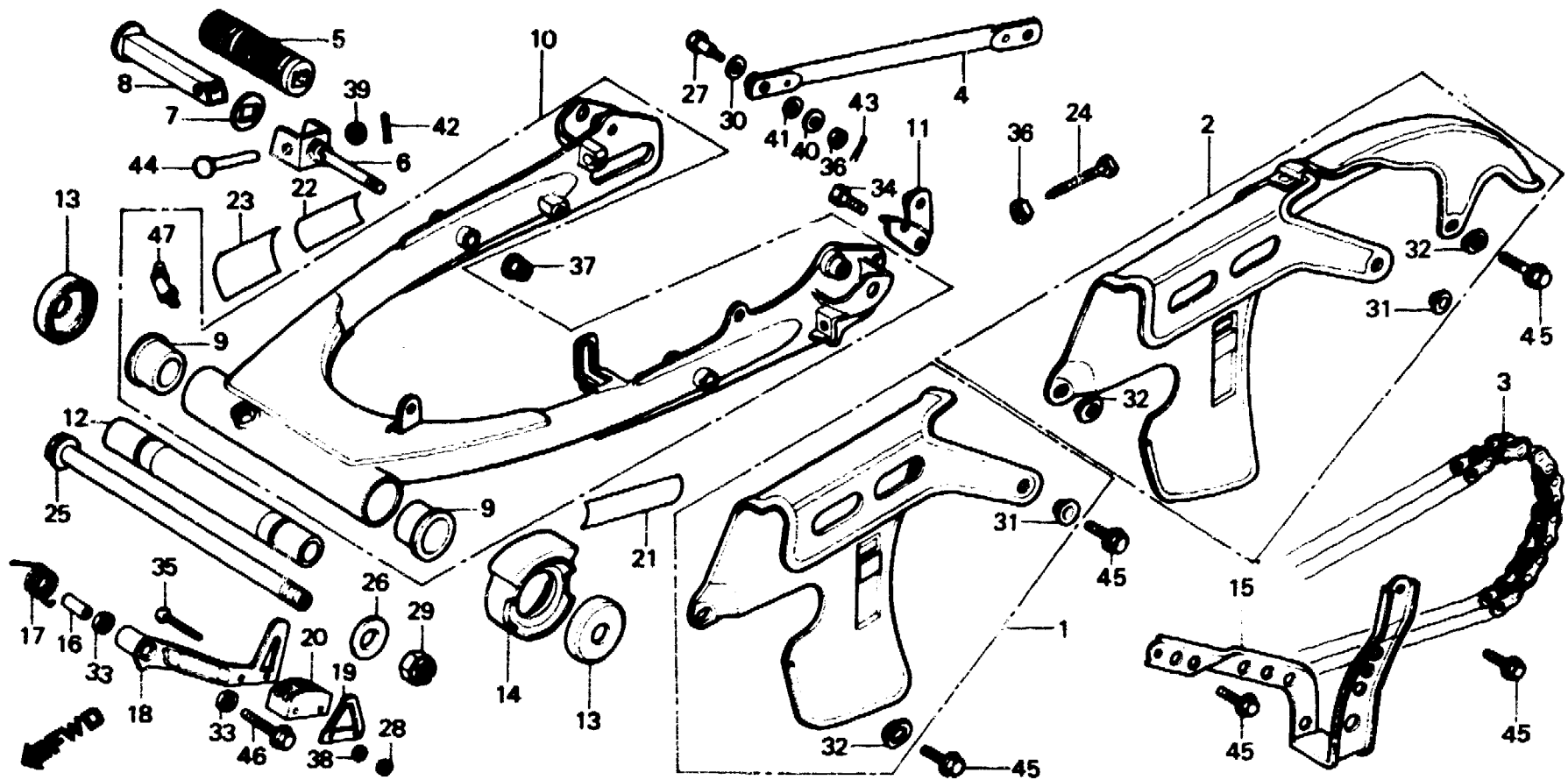
F-19

Rear fork • Chain case
(XL250S•SZ•SA•SB)

Fourche arrière •
Carter de chaîne
(XL250S•SZ•SA•SB)

Hintere Schwinge • Kettenschutz
(XL250S•SZ•SA•SB)

Horquilla trasera • Caja de cadena
(XL250S•SZ•SA•SB)



B426-32B

Service item	F.R.T.	Ref. No.	Part No.	Description	Reqd. No.				Serial No.	Area code
					S	Sz	SA	Sb		
		37	94050-08000	NUT, FLANGE, 8MM	2	2	2	2		
		38	94101-05000	WASHER, PLAIN, 5MM				2		B,DK,DM,E,ED,F1,F2,G1 G2,SA,SD,SW,U
		39	94101-06000	WASHER, PLAIN, 6MM	2	2	2	2		
		40	94101-08000	WASHER, PLAIN, 8MM				1		
		41	94111-10000	WASHER, SPRING, 10MM				1		CM,DK,DM,ED,F2,G1,G2 SA,SD,SW,U
		42	94201-16150	PIN, SPLIT, 1.6X15	2	2	2	2		
		43	94201-20180	PIN, SPLIT, 2.0X18				1		
		44	95015-81000	PIN A, PILLION STEP	2	2	2	2		
		45	95700-06012-00	BOLT, FLANGE, 6X12	5		5	5		B,E,ED,F,F1,F2,G,G1 G2,SD,SW,U CM,DK,DM,SA
		46	95700-08045-00	BOLT, FLANGE, 8X45				1		B,DK,DM,E,ED,F1,F2,G1 G2,SA,SD,SW,U
		47	96201-80000	NIPPLE, GREASE, B.T6S	1	1	1	1		

2-E16

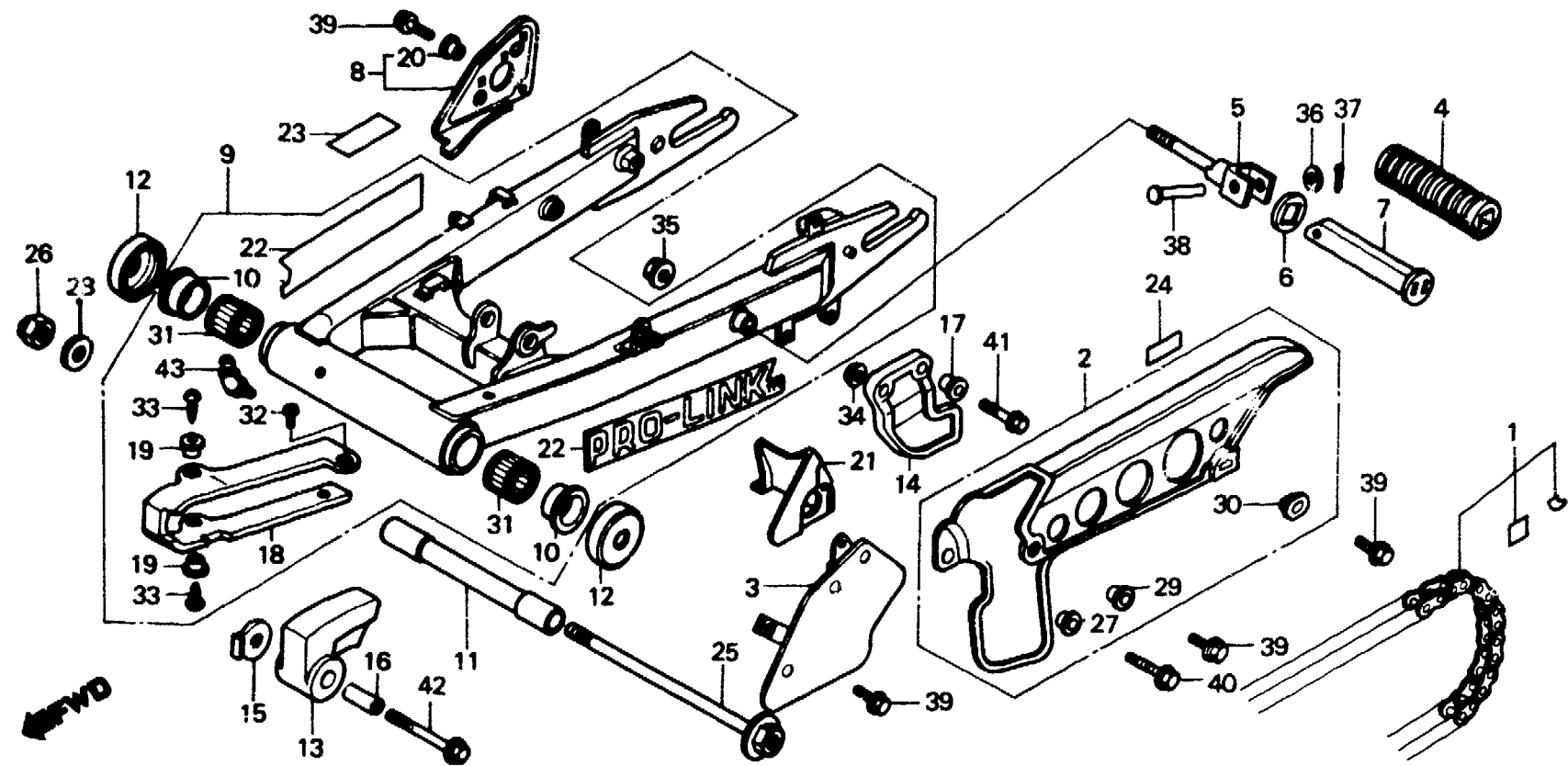
F-19-1

Rear fork • Chain case
(XL250Rc)

Fourche arrière •
Carter de chaîne
(XL250Rc)

Hintere Schwinge • Kettenschutz
(XL250Rc)

Horquilla trasera • Caja de cadena
(XL250Rc)



BKB7-17

Service item	F.R.T.	Ref. No.	Part No.	Description	Reqd. No. XL250					Serial No.	Area code
					S	Sr	SA	Sb	Rc		
CHAIN SET, DRIVE	0.6	1	405A3-KB7-671	CHAIN SET, DRIVE (520K0-102LE) (TAKASAGO)					1		CM
COLLAR, RR. FORK CENTER BAR, PILLION STEP INC. RELATIVE PART	0.1		405A3-KB7-672	CHAIN SET, DRIVE (520VC-102LE) (DAIDO)					1		CM
GUARD, CHAIN MUDGUARD			405B3-KB7-003	CHAIN SET, DRIVE (520VC-100LE) (DAIDO)					1		B,DK,DM,E,ED,F1,F2,G1 G2,IT,SA,SD,SW,U
FORK ASSY., RR.	0.8		405B3-KB7-005	CHAIN SET, DRIVE (520K0-100LE) (TAKASAGO)					1		B,DK,DM,E,ED,F1,F2,G1 G2,IT,SA,SD,SW,U
SLIPPER, CHAIN	0.3										B,CM,DK,DM,E,ED,F1,F2 IT,SA,SD,SW,U
SLIDER, CHAIN	0.2	2	40510-KB7-000	CASE, DRIVE CHAIN					1		G1,G2
BEARING, RR. FORK PIVOT (ONE OR ALL)	1.0		40510-KB7-610	CASE COMP., DRIVE CHAIN					1		G1,G2
		3	40515-KB7-610	COVER, DRIVE CHAIN					1		
		4	50710-KB7-000	RUBBER, PILLION STEP					2		
		5	50711-473-000	BRACKET, R. PILLION STEP					2		
		6	50712-405-000	WASHER, PILLION STEP					2		

1982.01.10

E

2-E16

2-F1

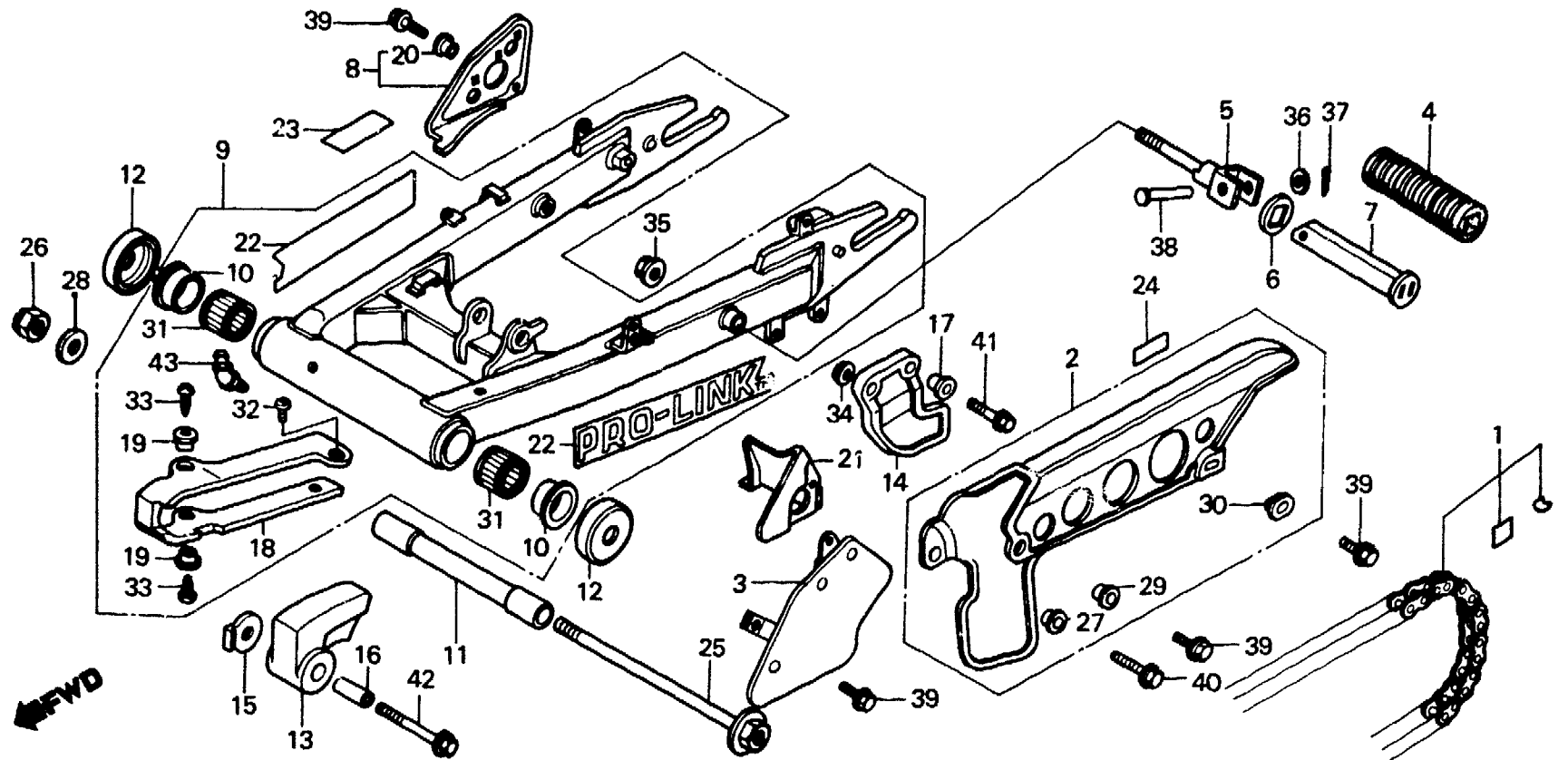
F-19-1

**Rear fork • Chain case
(XL250Rc)**

**Fourche arrière •
Carter de chaîne
(XL250Rc)**

**Hintere Schwinge • Kettenschutz
(XL250Rc)**

**Horquilla trasera • Caja de cadena
(XL250Rc)**



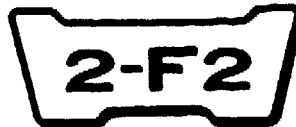
BK87-17

Service item	F.R.T.	Ref. No.	Part No.	Description	Reqd. No.					Serial No.	Area code
					XL250						
					S	SZ	SA	Sb	Rc		
		7	50715-KB7-000	BAR, PILLION STEP					2		
		8	50720-KB7-000	GUARD, PILLION STEP					1		
		9	52100-KB7-000ZA	FORK ASSY., RR. *NH-35M*					1		
		10	52109-430-300	BUSH, PIVOT THRUST					2		
		11	52141-435-730	COLLAR, RR. FORK CENTER					1		
		12	52144-356-003	CAP, RR. FORK DUST SEAL					2		
			52144-356-005	CAP, RR. FORK DUST SEAL					2		
		13	52155-KB7-000	SLIPPER, CHAIN					1		
		14	52156-KB7-000	GUARD, CHAIN					1		
		15	52157-MC4-000	NUT, CHAIN SLIPPER					1		

1982.01.10

E

2-F1



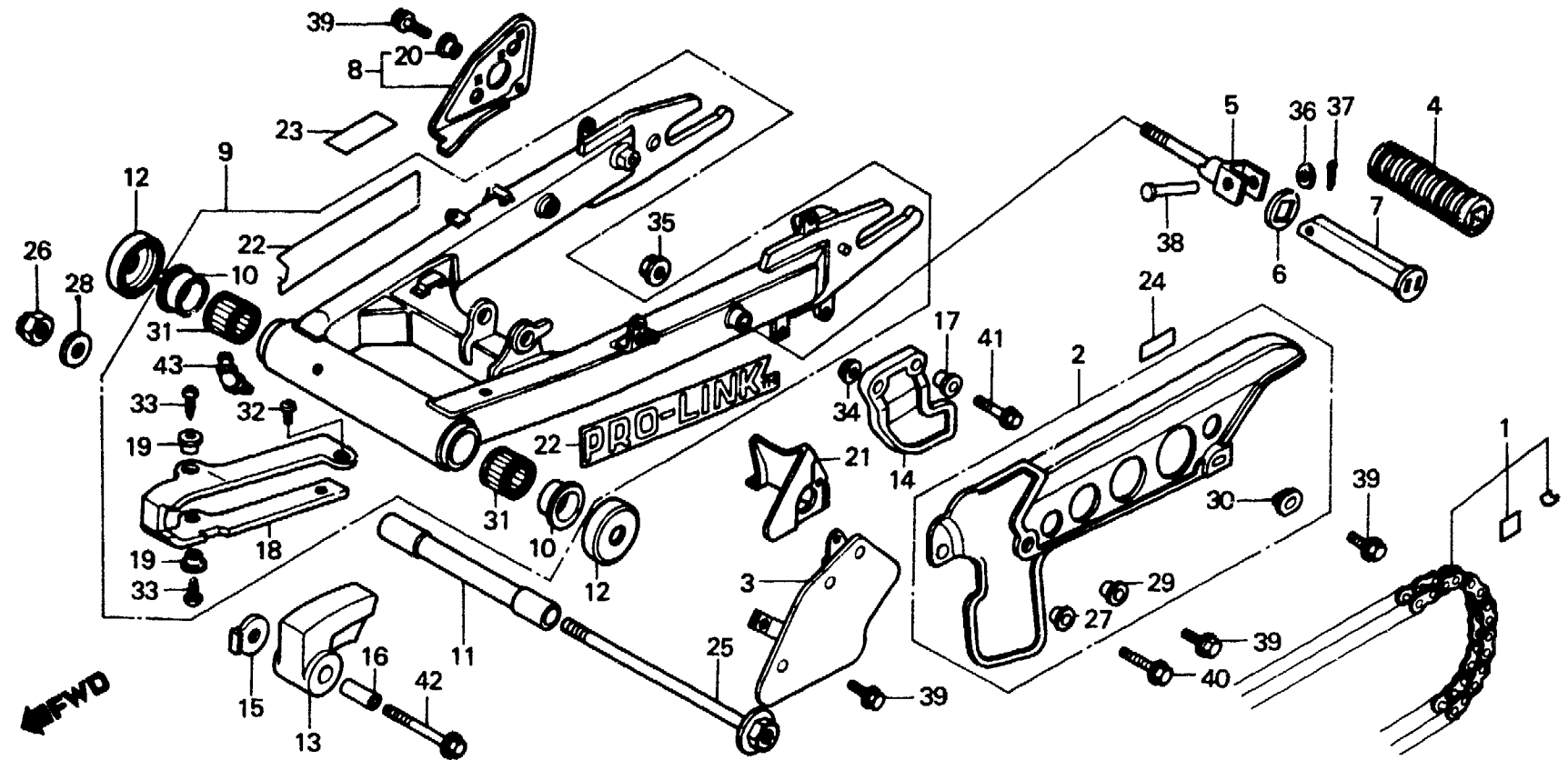
F-19-1

Rear fork • Chain case
(XL250Rc)

Fourche arrière •
Carter de chaîne
(XL250Rc)

Hintere Schwinge • Kettenschutz
(XL250Rc)

Horquilla trasera • Caja de cadena
(XL250Rc)



BK67-17

Service item	F.R.T.	Ref. No.	Part No.	Description	Reqd. No.					Serial No.	Area code
					S	Sz	SA	Sb	Rc		
		16	52158-MC4-000	COLLAR, CHAIN SLIPPER					1		
		17	52159-KB7-000	COLLAR, CHAIN GUARD					2		
		18	52170-MC4-000	SLIDER, CHAIN					1		
		19	52171-MC4-000	COLLAR, CHAIN SLIDER					4		
		20	61101-441-000	COLLAR, FR. FENDER SETTING					1		
		21	80105-MC4-000	MUDGUARD					1		
		22	87121-GC4-300	EMBLEM, RR. FORK					2		
		23	87504-028-670	MARK, MUFFLER CAUTION					1		CM
			87504-428-720	MARK, MUFFLER CAUTION					1		CM
		24	87505-KB7-600	MARK, TIRE CAUTION					1		B, DK, DM, E, ED, G1, G2, IT
			87505-KB7-620	MARK, TIRE CAUTION					1		SA, SD, U
			87505-KB7-660	MARK, TIRE CAUTION					1		F1, F2
			87505-KB7-670	MARK, TIRE CAUTION					1		SA
			87505-KB7-720	MARK, TIRE CAUTION					1		CM
									1		CM

2-F3

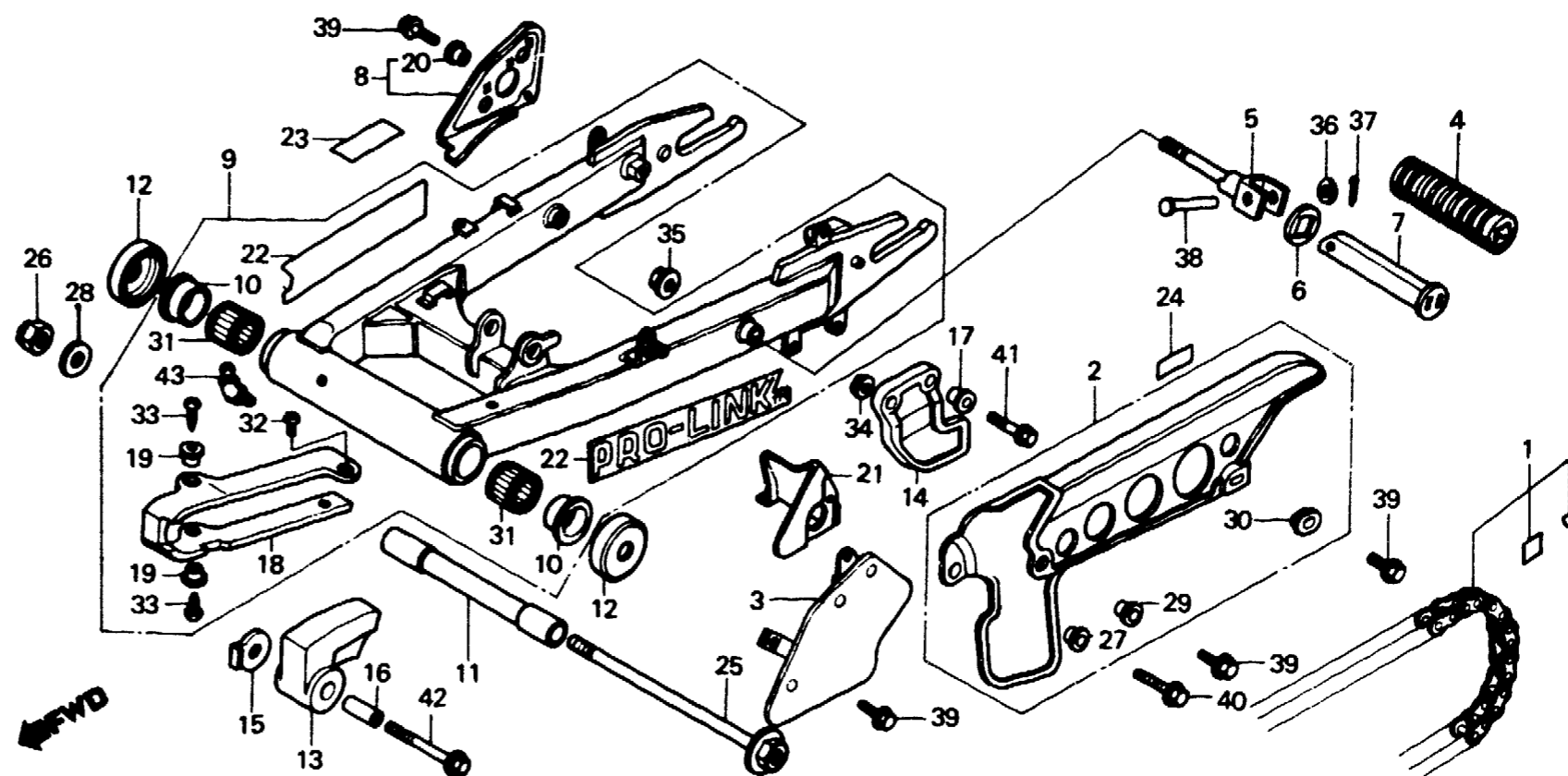
F-19-1

**Rear fork • Chain case
(XL250Rc)**

**Fourche arrière •
Carter de chaîne
(XL250Rc)**

**Hintere Schwinge • Kettenschutz
(XL250Rc)**

**Horquilla trasera • Caja de cadena
(XL250Rc)**



BKB7-17

Service item	F.R.T.	Ref. No.	Part No.	Description	Reqd. No.				Serial No.	Area code
					S	Sz	SA	Sb		
		25	90121-MA0-770	BOLT, RR. FORK PIVOT						1
		26	90305-197-003	NUT, AXLE, 14MM						1
		27	90501-124-000	WASHER, FR. COVER SETTING						1
		28	90501-447-000	WASHER, RR. FORK PIVOT						1
		29	90512-300-000	WASHER, 6X20						1
		30	90513-323-000	WASHER, 6X9						1
		31	91071-MA0-003	BEARING, RR. FORK PIVOT (TOYO)						2
			91071-MA0-004	BEARING, RR. FORK PIVOT (TOMSON)						2
		32	93500-06008	SCREW, PAN, 6X8						1
		33	93901-26110	SCREW, TAPPING, 6X12						3
		34	94050-06000	NUT, FLANGE, 6MM						1
		35	94050-10000	NUT, FLANGE, 10MM						2
		36	94101-06000	WASHER, PLAIN, 6MM						2
		37	94201-16150	PIN, SPLIT, 1.6X15						2
		38	95015-81000	PIN A, PILLION STEP						2

2-F4

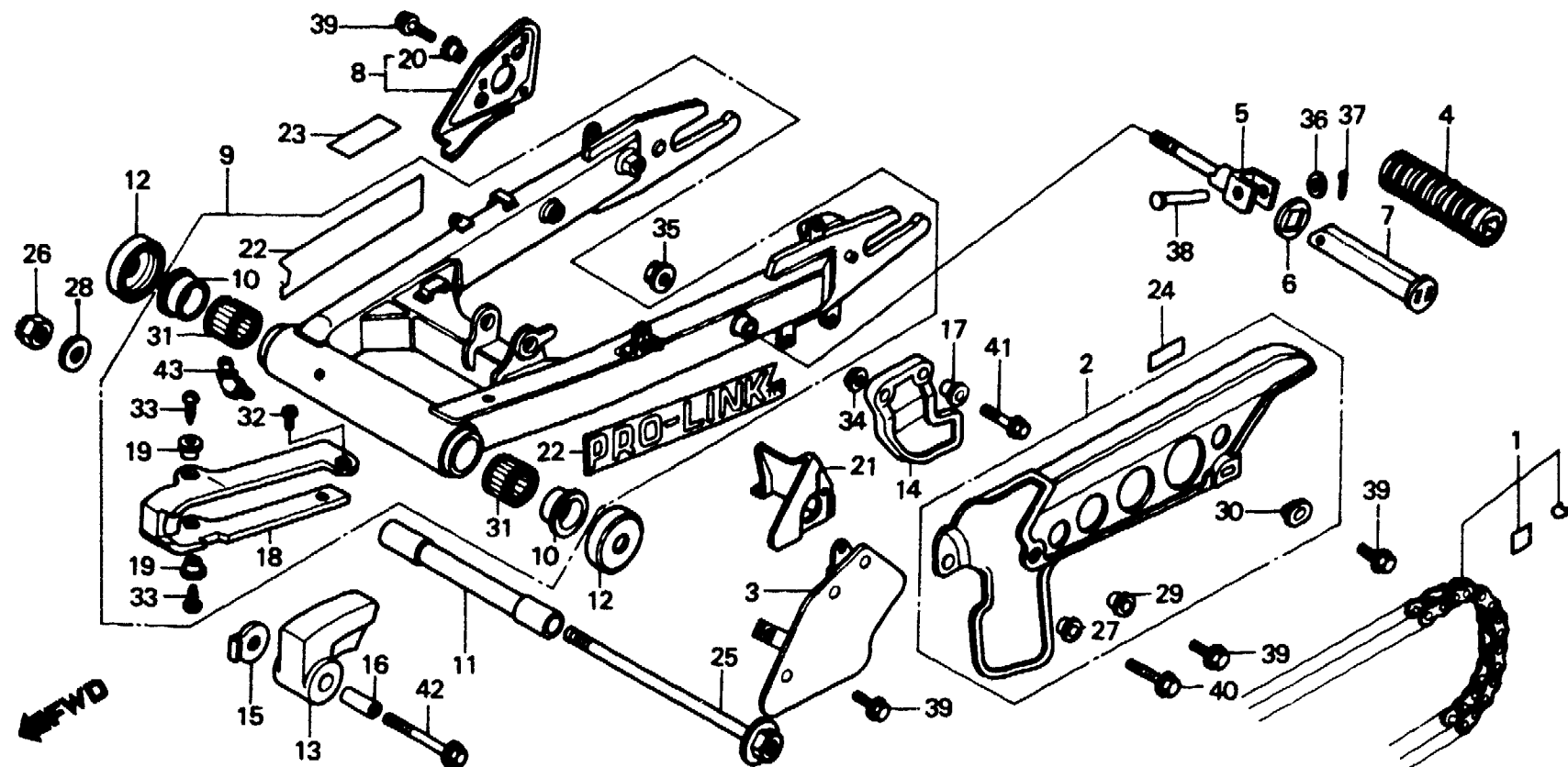
F-19-1

**Rear fork • Chain case
(XL250Rc)**

**Fourche arrière •
Carter de chaîne
(XL250Rc)**

**Hintere Schwinge • Kettenschutz
(XL250Rc)**

**Horquilla trasera • Caja de cadena
(XL250Rc)**



BKB7-17

Service item	F.R.T.	Ref. No.	Part No.	Description	Reqd. No.					Serial No.	Area code
					S	Sz	SA	Ss	Rc		
		39	95700-06010-00	BOLT, FLANGE, 6X10					3		B,CM,DK,DM,E,ED,F1,F2 IT,SA,SD,SW,U G1,G2
		40	95700-06018-00	BOLT, FLANGE, 6X18					4		
		41	95700-06020-00	BOLT, FLANGE, 6X20					2		
		42	95700-08045-00	BOLT, FLANGE, 8X45					1		
		43	96201-80000	NIPPLE, GREASE, B.T6S					1		

2-F5

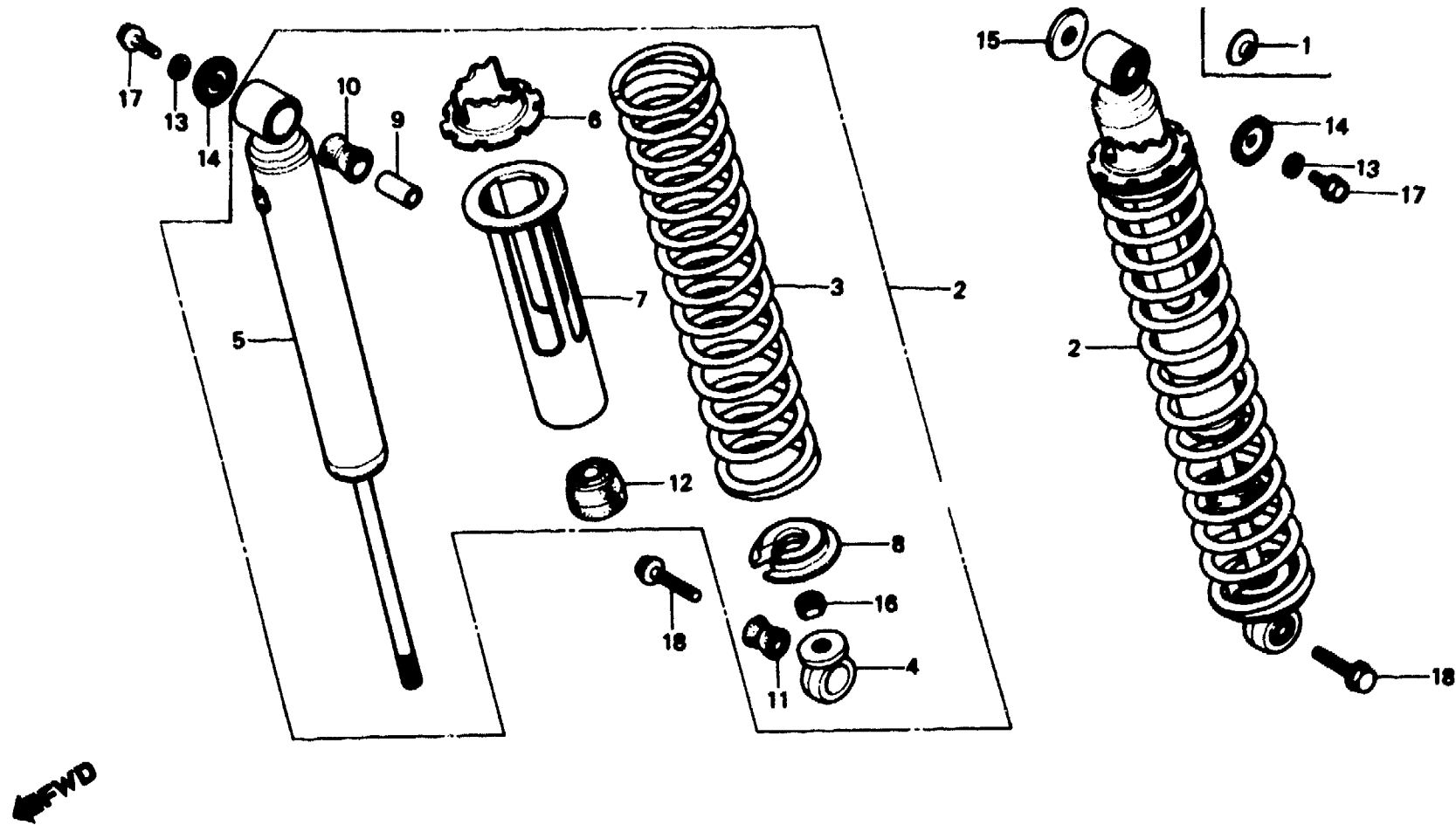
F-20

**Rear cushion
(XL250S·Sz·SA·SB)**

**Amortisseur arrière
(XL250S·Sz·SA·SB)**

**Hinterer Stoßdämpfer
(XL250S·Sz·SA·SB)**

**Amortiguador trasero
(XL250S·Sz·SA·SB)**



B428-33B

Service item	F.R.T.	Ref. No.	Part No.	Description	Reqd. No.				Serial No.	Area code	
					S	Sz	SA	Sb			Rc
CUSHION ASSY., RR. DAMPER COMP., RR. INC. RELATIVE PART	0.1 0.3	1	16587-862-000	COLLAR, THROTTLE ARM	2	2	2	2		CM,DK,DM,E,F,F1,F2,SA U	
		2	52400-428-003	CUSHION ASSY., RR.	2	2					
			52400-428-871	CUSHION ASSY., RR.			2				
			52400-428-731	CUSHION ASSY., RR.				2			CM
			52400-428-831ZA	CUSHION ASSY., RR. *R-110*				2			B,DK,DM,E,ED,F1,F2,G1 G2,SA,SD,SW,U
			52400-428-831ZB	CUSHION ASSY., RR. *NH-1*				2			B,DK,DM,E,ED,F1,F2,G1 G2,SA,SD,SW,U
		3	52401-428-003	SPRING, RR. CUSHION	2	2					
			52401-428-872	SPRING, RR. CUSHION			2				B,DK,DM,E,ED,F1,F2,G1 G2,SA,SD,SW,U
			52401-428-831	SPRING, RR. CUSHION (MONZA RED)			2	2			CM
			52401-428-872	SPRING, RR. CUSHION (BLACK)				2			B,DK,DM,E,ED,F1,F2,G1 G2,SA,SD,SW,U
		4	52403-391-671	JOINT COMP., UPPER	2	2	2	2			
		5	52410-428-003	DAMPER COMP., RR.	2	2					
			52410-428-872	DAMPER COMP., RR.				2			
			52410-428-731	DAMPER COMP., RR.					2		CM

2-F6

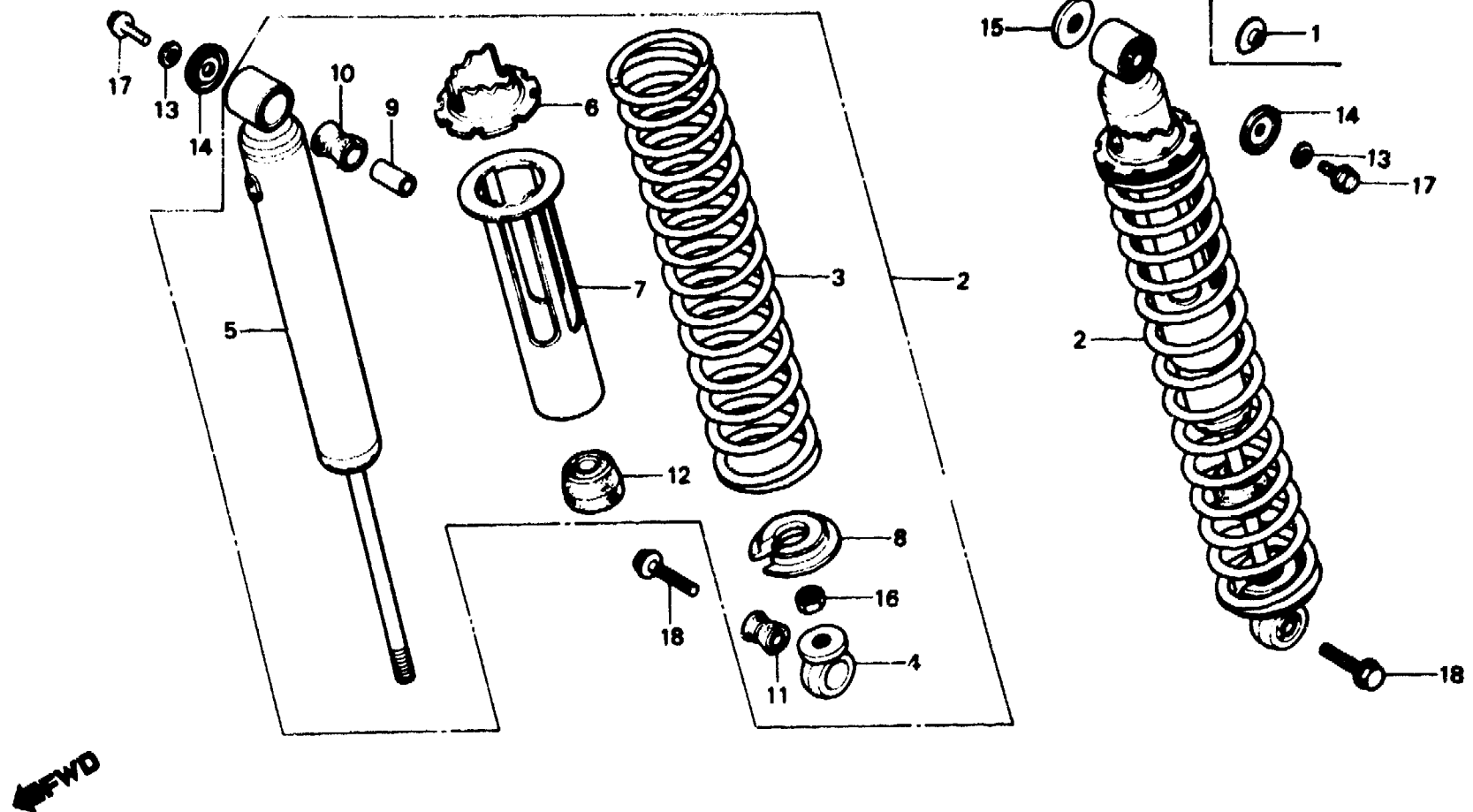
F-20

**Rear cushion
(XL250S·SZ·SA·SB)**

**Amortisseur arrière
(XL250S·SZ·SA·SB)**

**Hinterer Stoßdämpfer
(XL250S·SZ·SA·SB)**

**Amortiguador trasero
(XL250S·SZ·SA·SB)**



B428-33B

Service item	F.R.T.	Ref. No.	Part No.	Description	Reqd. No.					Serial No.	Area code
					S	Sz	SA	Sb	Rc		
			52410-428-732	DAMPER COMP., RR.					2		B,DK,DM,E,ED,F1,F2,G1,G2,SA,SD,SW,U
		6	52422-410-003	ADJUSTER, SPRING	2	2	2	2			
		7	52458-428-003	GUIDE, SPRING	2	2	2	2			
		8	52459-428-003	SEAT, SPRING UPPER	2	2	2	2			
		9	52486-056-000	COLLAR, RR. CUSHION RUBBER	2	2	2	2			
		10	52488-331-003	RUBBER B, JOINT (SHOWA) BUSH	2	2	2	2			
		11	52489-361-000	BUSH, DAMPER	2	2	2	2			
		12	52517-404-003	RUBBER, STOPPER	2	2	2	2			
		13	71979-538-940	WASHER, SUN ROOF	2	2	2	2			CM,DK,DM,E,F,F1,F2,SA,U
		14	90502-428-000	WASHER, RR. CUSHION	2		2	2			B,ED,G,G1,G2,SD,SW
		15	90526-035-000	WASHER, 12.2X26	2	2		2			CM
							2	2			B,DK,DM,E,ED,F,F1,F2,G,G1,G2,SA,SD,SW,U
		16	94002-10000-0S	NUT, HEX., 10MM	2	2	2	2			
		17	95700-06012-00	BOLT, FLANGE, 6X12	2		2				B,ED,G,G1,G2,SD,SW

1982.01.10

E

2-F6