

2-C12

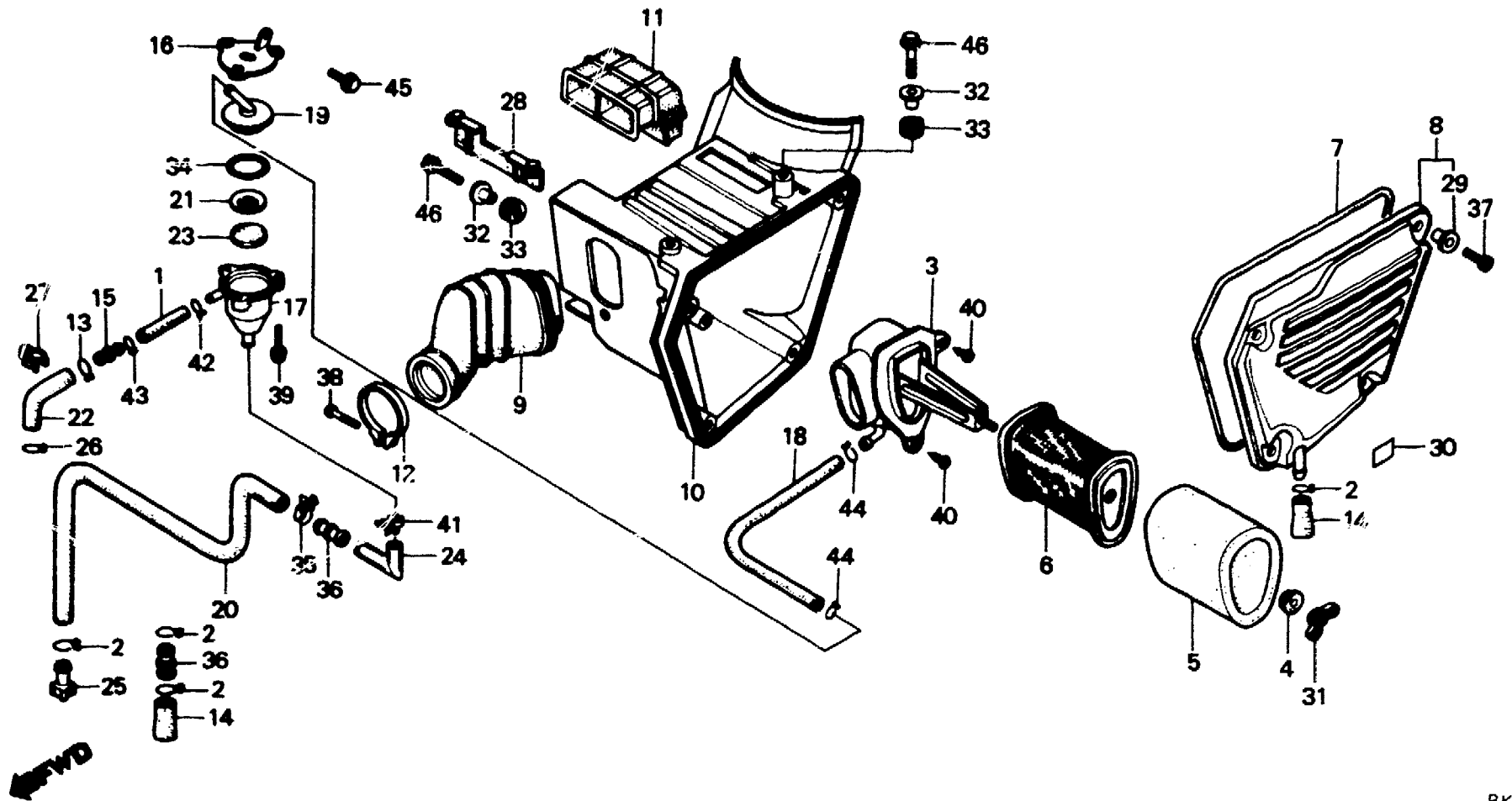
F-15-3

**Air cleaner
(XL250Rc)**

**Filtre à air
(XL250Rc)**

**Luftfilter
(XL250Rc)**

**Limpiador de aire
(XL250Rc)**



BKB7-13

Service item	F.R.T.	Ref. No.	Part No.	Description	Reqd. No.					Serial No.	Area code
					S	Sz	SA	Sa	Rc		
STAY, ELEMENT SETTING	0.2	1	15762-428-670	TUBE B, BREATHER					1		
ELEMENT A, AIR CLEANER		2	15772-292-010	CLIP, BREATHER TUBE					2		B, CM, E, ED, F1, F2, G1, G2 IT, SD, SW, U
BODY, BREATHER SEPARATOR									3		DK, DM, SA
INC. RELATIVE PART									1		
TUBE, AIR CLEANER CONNECTING	0.4	3	17212-KB7-000	STAY, ELEMENT SETTING					1		
CASE, AIR CLEANER	0.7	4	17212-PA0-000	WASHER, AIR CLEANER					1		
DUCT, AIR IN.	0.1	5	17213-KB7-000	ELEMENT A, AIR CLEANER					1		
		6	17214-KB7-000	HOLDER, ELEMENT					1		
		7	17219-KB7-000	SEAL, AIR CLEANER COVER					1		
		8	17220-KB7-000	COVER, AIR CLEANER CASE					1		
		9	17222-KB7-000	TUBE, AIR CLEANER CONNECTING					1		
		10	17230-KB7-000	CASE, AIR CLEANER					1		
		11	17240-KB7-000	DUCT, AIR IN.					1		
		12	17252-428-000	BAND A, CONNECTING TUBE					1		
		13	17316-611-000	CLIP, BREATHER TUBE					1		
		14	17358-170-000	TUBE, DRAIN					1		B, CM, E, ED, F1, F2, G1, G2 IT, SD, SW, U
									2		DK, DM, SA

2-C13

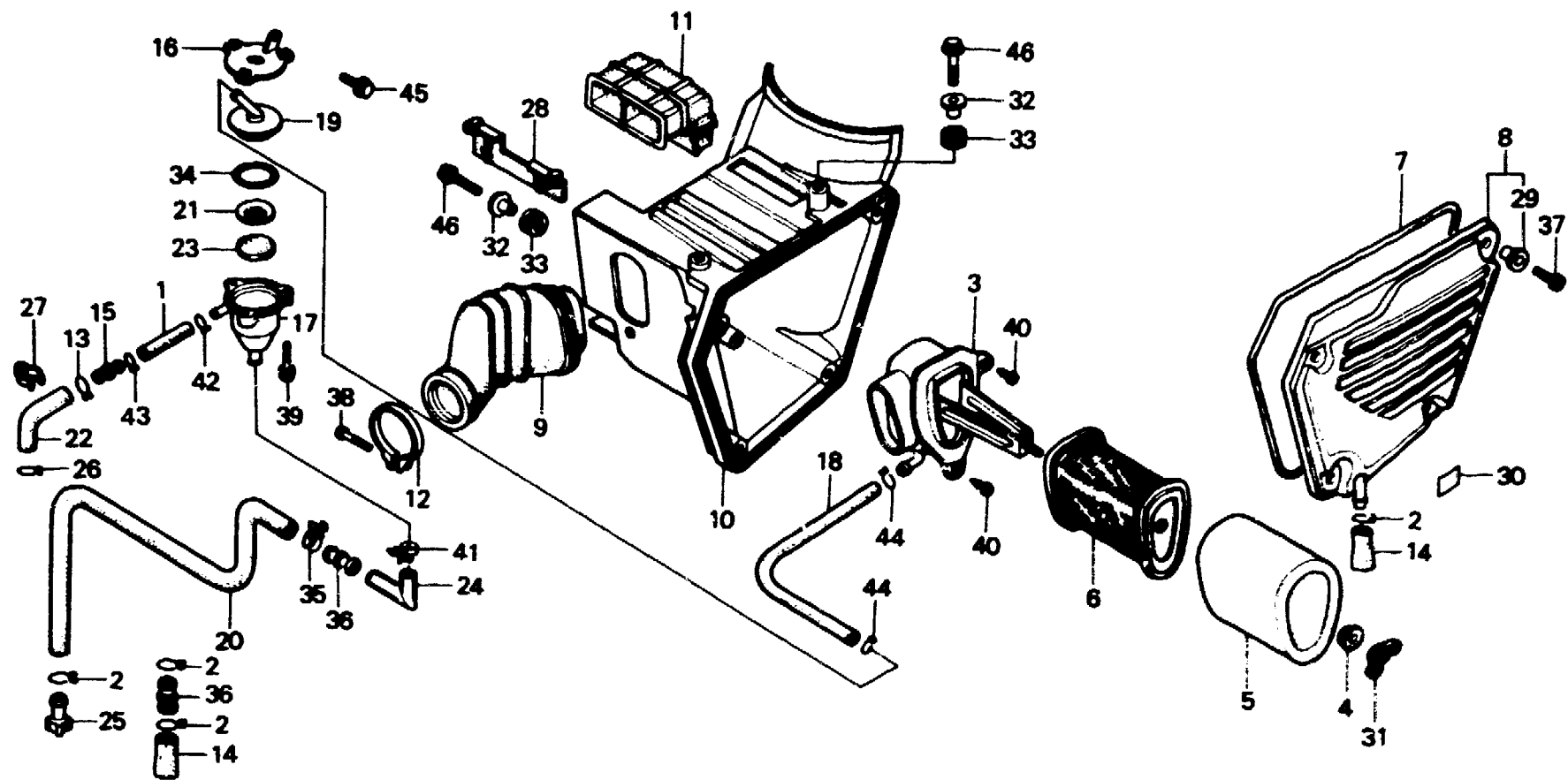
F-15-3

**Air cleaner
(XL250Rc)**

**Filtre à air
(XL250Rc)**

**Luftfilter
(XL250Rc)**

**Limpiador de aire
(XL250Rc)**



BKB7-13

Service item	F.R.T.	Ref. No.	Part No.	Description	Reqd. No.					Serial No.	Area code
					S	Sz	SA	Sa	Rc		
		15	17359-428-000	JOINT, BREATHER TUBE					1		
		16	17361-KB7-000	STAY, BREATHER					1		
		17	17361-419-670	BODY, BREATHER SEPARATOR					1		
		18	17362-KB7-000	TUBE, BREATHER					1		
		19	17362-419-670	CAP, BREATHER SEPARATOR					1		
		20	17363-KB7-000	TUBE, DRAIN					1		
		21	17363-419-670	HOLDER, ELEMENT					1		
		22	17364-KB7-000	TUBE A, BREATHER					1		
		23	17364-419-000	ELEMENT, CONDENSATION					1		
		24	17366-428-670	TUBE A, DRAIN					1		
		25	17370-382-870	PLUG, BREATHER TUBE					1		B,CM,E,ED,F1,F2,G1,G; IT,SD,SW,U
		26	17724-102-700	CLIP, SUB TANK HOSE					1		
		27	32975-428-000	CLIP, PULSER CORD					1		
		28	50371-KB7-000	RUBBER, BAFFLE					1		

1982.01.10

E

2-C13

2-C14

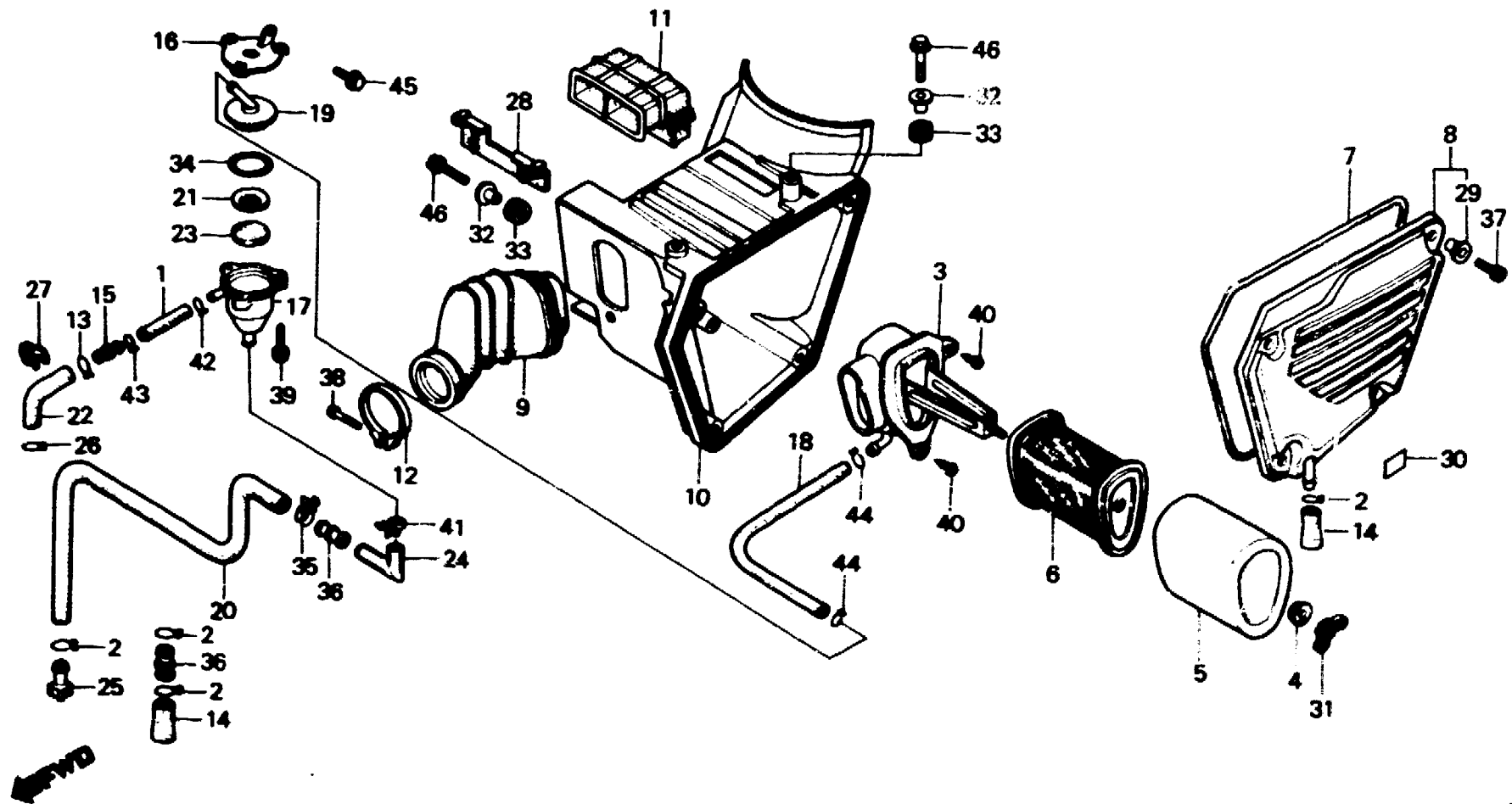
F-15-3

**Air cleaner
(XL250Rc)**

**Filtre à air
(XL250Rc)**

**Luftfilter
(XL250Rc)**

**Limpiador de aire
(XL250Rc)**



BK87-15

Service item	F.R.T.	Ref. No.	Part No.	Description	Reqd No XL250					Serial No.	Area code
					S	Sz	SA	SA	Rc		
		29	83601-357-000	COLLAR, COVER SETTING					4		
		30	87507-429-620	MARK, AIR CLEANER CAUTION					1		CM, F1, F2
			87508-120-000	LABEL, AIR CLEANER CAUTION					1		B, CM, DK, DM, E, ED, G1, G2 IT, SA, SD, SW, U
		31	90325-044-000	NUT, TOOL BOX SETTING					1		
		32	90501-MC4-000	COLLAR A, AIR CLEANER CASE					3		
		33	90505-MC4-000	GROMMET A, AIR CLEANER CASE					3		
		34	91305-419-670	O-RING, 47X1.9					1		
		35	91462-393-780	CLIP, TUBE					1		
		36	91463-393-780	JOINT, TUBE					1		B, CM, E, ED, F1, F2, G1, G2 IT, SD, SW, U
		37	92300-06016-0A	BOLT, SLOTTED, 6X16					2		DK, DM, SA
		38	93500-05025-0G	SCREW, PAN, 5X25					4		
		39	93891-04016-00	SCREW-WASHER, 4X16					1		
									3		

1982.01.10

E

2-C14

2-C15

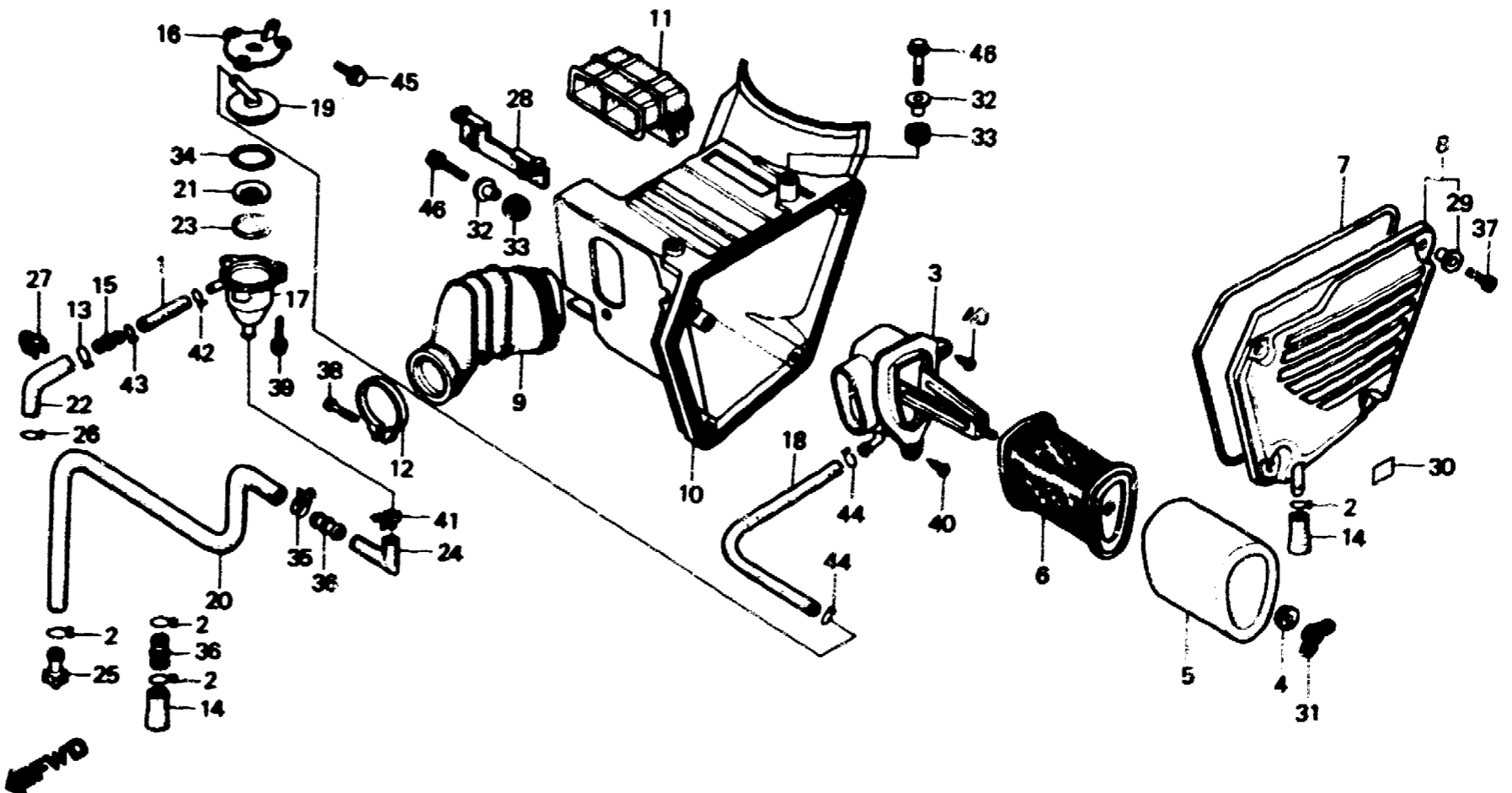
F-15-3

**Air cleaner
(XL250Rc)**

**Filtere à air
(XL250Rc)**

**Luftfilter
(XL250Rc)**

**Limpiador de aire
(XL250Rc)**



BXB7-13

Service item	F.R.T.	Ref. No.	Part No.	Description	Reqd No				Serial No.	Area code
					S	Sz	SA	Se		
		40	93903-36220	SCREW, TAPPING, 6X6					2	
		41	95002-01160	CLIP A16, TUBE					1	
		42	95002-02100	CLIP B10, TUBE					1	
		43	95002-02120	CLIP B12, TUBE					1	
		44	95002-02130	CLIP B12.5, TUBE					2	
		45	95700-06010-00	BOLT, FLANGE, 6X10					1	
		46	95700-06016-00	BOLT, FLANGE, 6X16					3	

2-C16

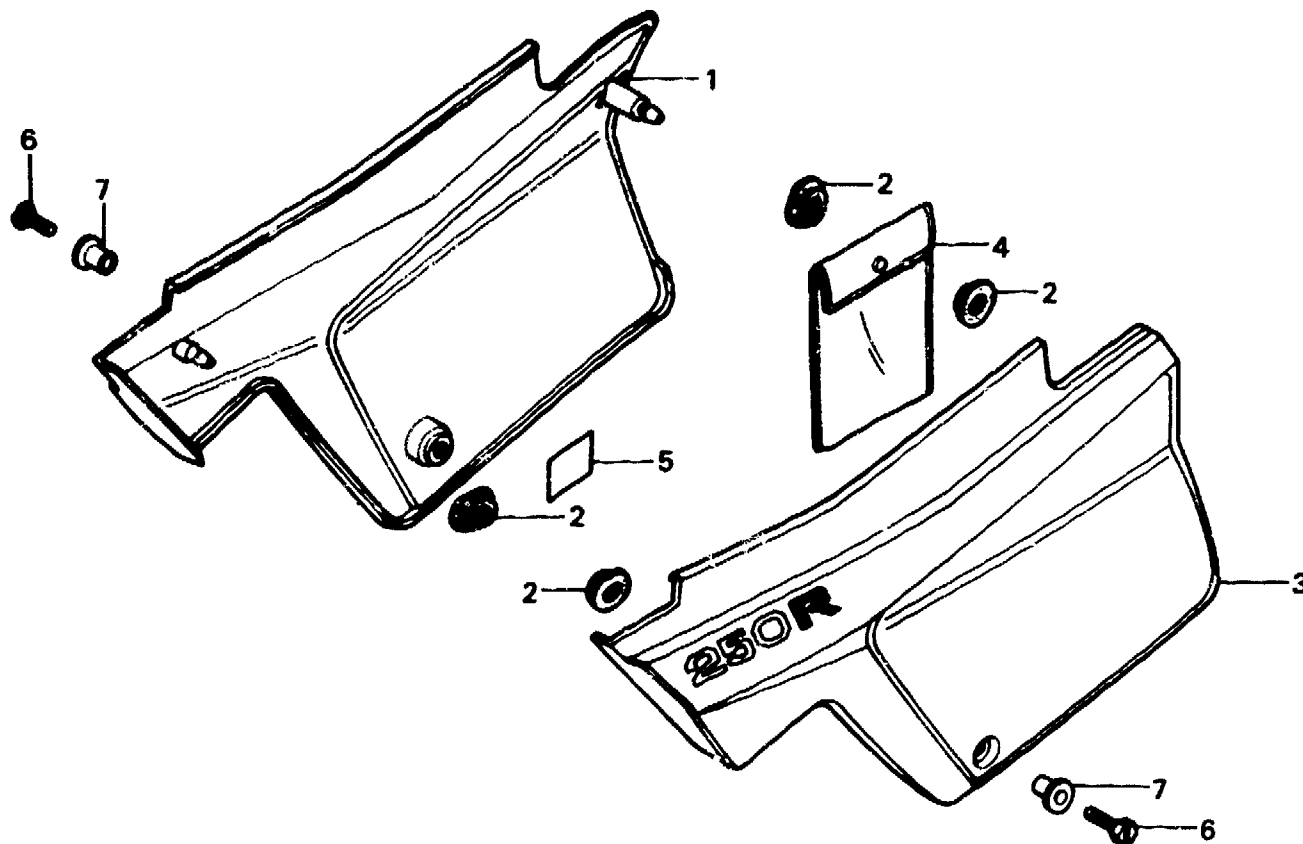
F-16

**Side cover
(XL250Rc)**

**Couvercle latéral
(XL250Rc)**

**Seitendeckel
(XL250Rc)**

**Cubierta lateral
(XL250Rc)**



BKB7-14

Service item	F.R.T.	Ref. No.	Part No.	Description	Reqd. No.					Serial No.	Area code	
					S	Sz	SA	Se	Rc			
COVER COMP., SIDE (ONE OR ALL)	0.1	1	835A0-KB7-000ZA	COVER COMP., R. SIDE *R-110*					1		CM	
			835A0-KB7-600ZA	COVER COMP., R. SIDE *R-110*					1		B,DK,DM,E,ED,F1,F2,G1 G2,IT,SA,SD,SW,U	
			835B0-KB7-600ZA	COVER COMP., R. SIDE *NH-24*					1		B,DK,DM,E,ED,F1,F2,G1 G2,IT,SA,SD,SW,U	
			835B0-KB7-600ZB	COVER COMP., R. SIDE *NH-104M-U*					1		B,DK,DM,E,ED,F1,F2,G1 G2,IT,SA,SD,SW,U	
			2	83551-300-000	GROMMET, AIR CLEANER CASE					4		
			3	836A0-KB7-000ZA	COVER COMP., L. SIDE *R-110*					1		CM
				836A0-KB7-600ZA	COVER COMP., L. SIDE *R-110*					1		B,DK,DM,E,ED,F1,F2,G1 G2,IT,SA,SD,SW,U
			836B0-KB7-600ZA	COVER COMP., L. SIDE *NH-24*					1		B,DK,DM,E,ED,F1,F2,G1 G2,IT,SA,SD,SW,U	
			836B0-KB7-600ZB	COVER COMP., L. SIDE *NH-104M-U*					1		B,DK,DM,E,ED,F1,F2,G1 G2,IT,SA,SD,SW,U	
			4	83642-355-000	BAG, OWNERS MANUAL					1		

2-D1

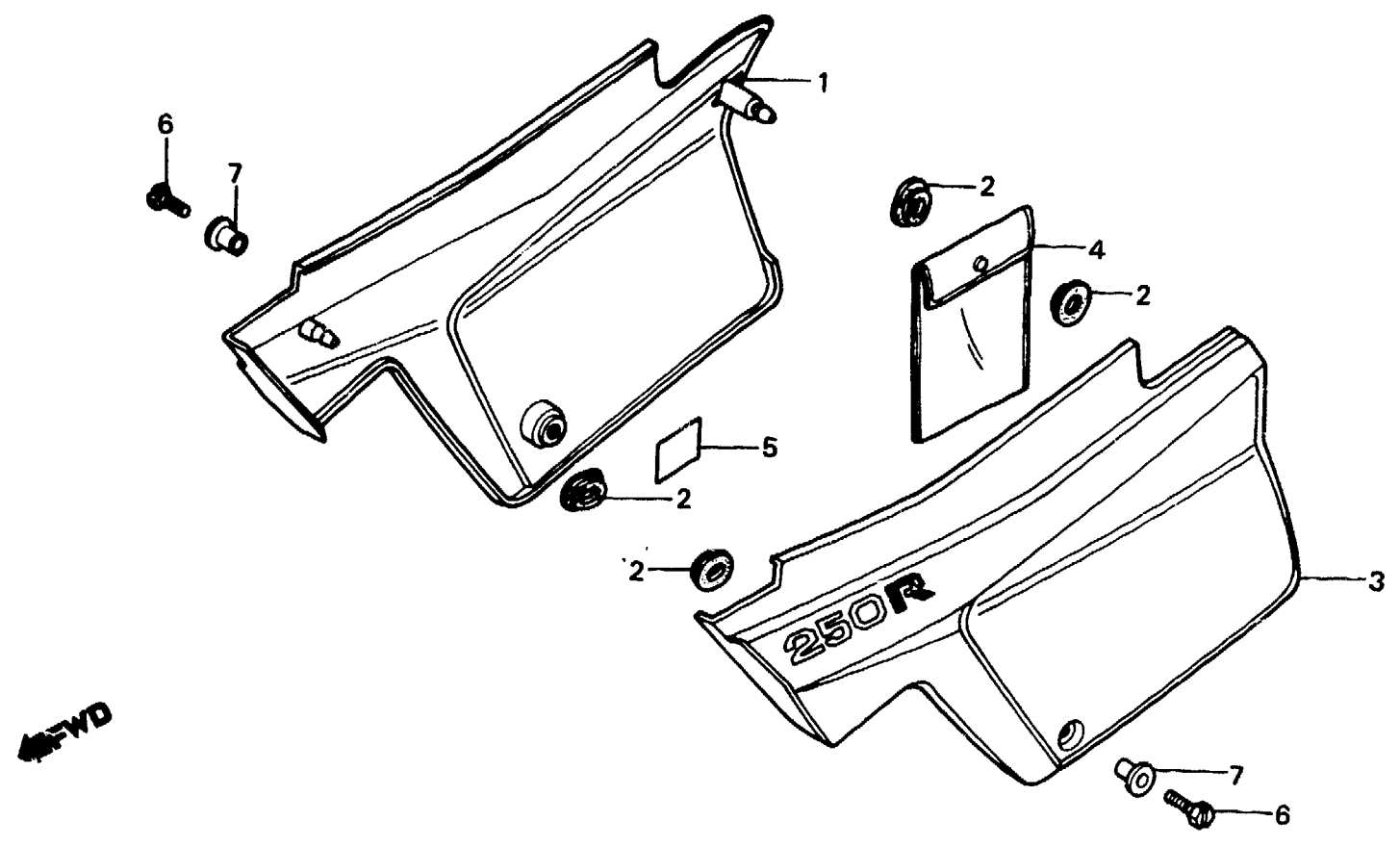
F-16

**Side cover
(XL250Rc)**

**Couvercle latéral
(XL250Rc)**

**Seitendeckel
(XL250Rc)**

**Cubierta lateral
(XL250Rc)**



BKB7-14

Service item	F.R.T.	Ref. No.	Part No.	Description	Reqd. No.					Serial No.	Area code
					S	Sz	SA	Sb	Rc		
		5	87506-KB7-620	MARK, BATTERY CAUTION (FRENCH)					1		CM,F1,F2
			87506-KB7-670	MARK, BATTERY CAUTION					1		B,CM,DK,DM,E,ED,G1,G2 IT,SA,SD,SW,U
		6	90011-729-000	BOLT, SPECIAL, 6X14					2		
		7	90522-028-000	WASHER, CHAIN CASE SETTING					2		

2-D2

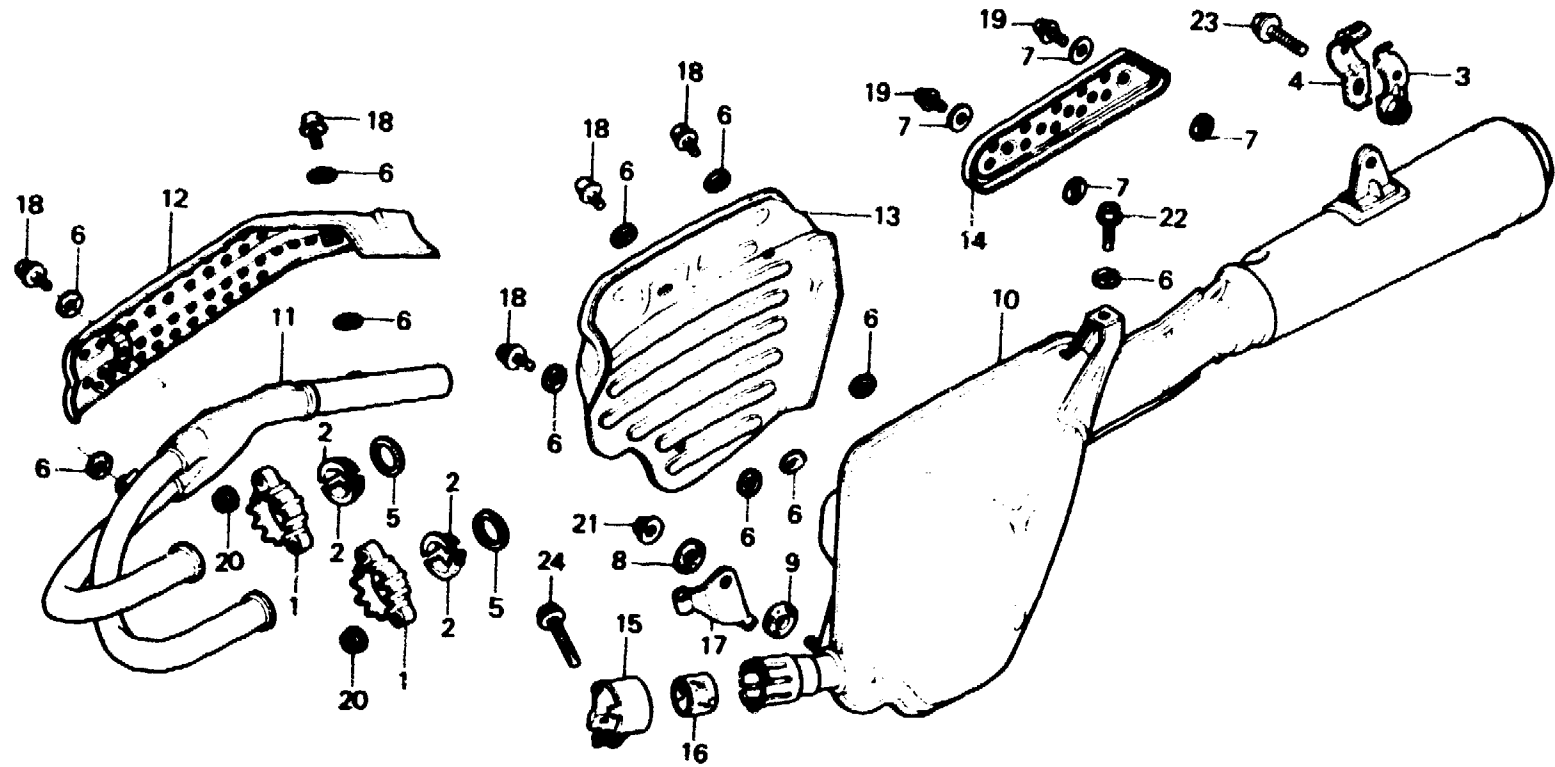
F-17

**Exhaust muffler
(XL250S·SZ·SA·SB)**

**Pot d'échappement
(XL250S·SZ·SA·SB)**

**Auspufftopf
(XL250S·SZ·SA·SB)**

**Silenciador
(XL250S·SZ·SA·SB)**



←FWD

B428-30

Service item	F.R.T.	Ref. No.	Part No.	Description	Reqd. No. XL250				Serial No.	Area code
					S	Sz	SA	Sb		
GASKET, EX. PIPE (ONE OR ALL)	0.2	1	18231-428-000	JOINT, EX. PIPE	2	2				B,CM,DK,DM,E,ED,F1,F2 G1,SA,SD,SW,U
			18231-428-870	JOINT, EX. PIPE			2	2		
PIPE, EX. MUFFLER COMP., ARRESTER	0.6	2	18233-428-000	COLLAR, EX. PIPE JOINT	4	4	4	4		G2
			18283-428-000	BAND A, SUB MUFFLER	1	1	1	1		
PROTECTOR, EX. PIPE PROTECTOR, MUFFLER	0.1	3	18284-428-000	BAND B, SUB MUFFLER	1	1	1	1		
			18291-001-010	GASKET, EX. PIPE	2	2	2	2		
		6	18292-329-000	PACKING, PROTECTOR	15					
					11				5015671	5015670
		7	18292-415-000	PACKING, PROTECTOR	4		11	11	11	5015671
		8	18292-428-000	PACKING A, MUFFLER	1	1	1	1		
		9	18295-428-000	PACKING B, MUFFLER	1	1	1	1		
		10	18300-428-000	MUFFLER COMP., ARRESTER	1	1	1	1		B,CM,DK,DM,E,ED,F,F1 F2,SA,SD,SW,U

2-D3

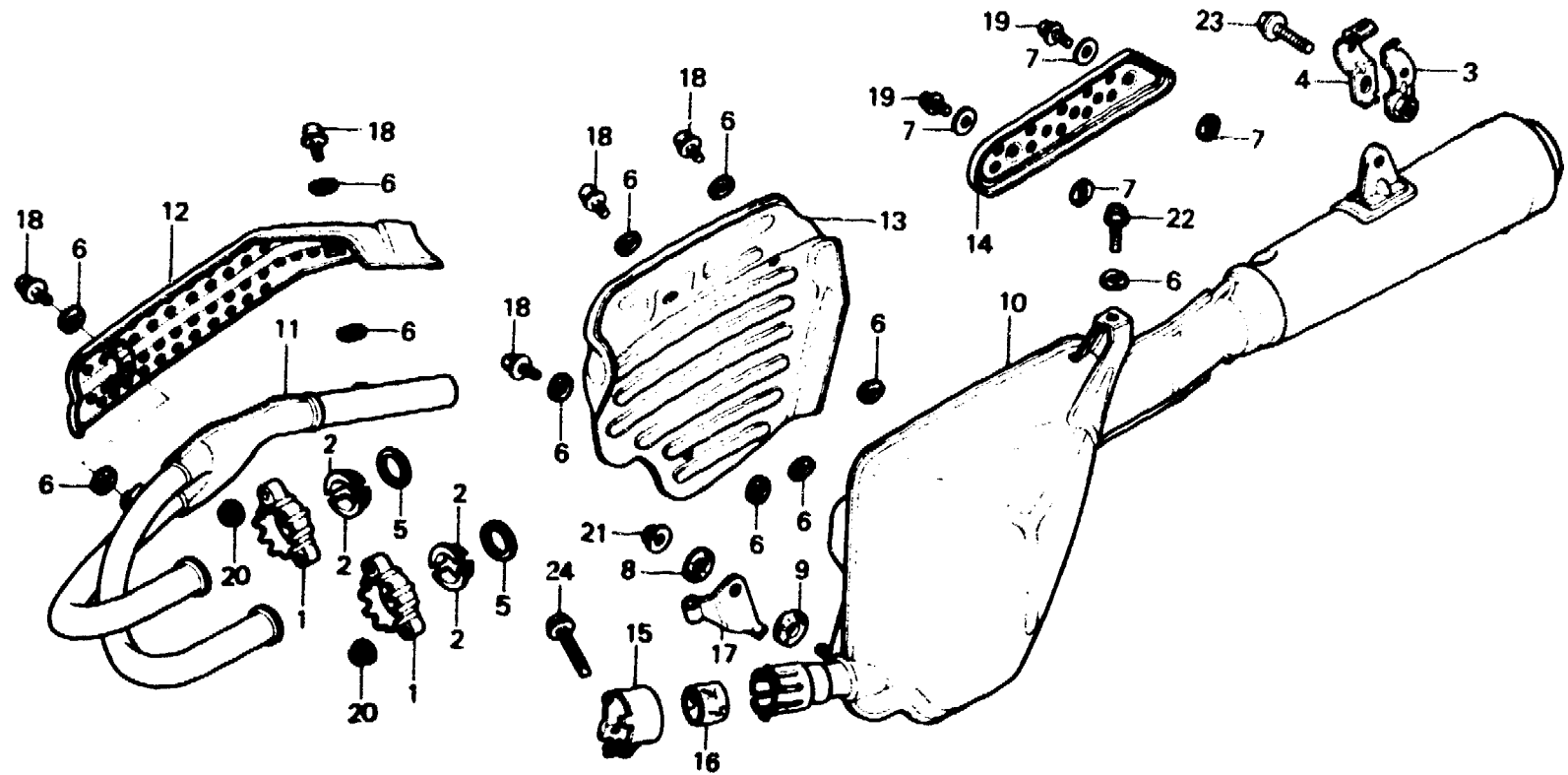
F-17

Exhaust muffler
(XL250S·SZ·SA·SB)

Pot d'échappement
(XL250S·SZ·SA·SB)

Auspufftopf
(XL250S·SZ·SA·SB)

Silenciador
(XL250S·SZ·SA·SB)



B428-30

Service item	F.R.T.	Ref. No.	Part No.	Description	Reqd. No. XL250				Serial No.	Area code
					S	Sz	SA	Sb Rc		
			18300-428-610	MUFFLER COMP., ARRESTER	1		1			G, G1, G2
		11	18320-428-000	PIPE, EX.	1	1	1	1		B, CM, DK, DM, E, ED, F, F1 F2, SA, SD, SW, U
			18320-428-610	PIPE, EX.	1		1	1		G, G2
			18320-428-920	PIPE, EX.			1	1		G1
		12	18325-428-000	PROTECTOR, EX. PIPE	1	1	1	1		
		13	18345-428-000	PROTECTOR, MUFFLER	1	1	1	1		
		14	18355-428-000	PROTECTOR B, MUFFLER	1	1	1	1		
		15	18371-428-000	BAND, MUFFLER	1	1	1	1		
		16	18391-313-000	GASKET, MUFFLER	1	1	1	1		
		17	50355-428-000	RECEIVER, CLUTCH CABLE	1	1	1	1		
		18	93891-06010-00	SCREW-WASHER, 6X10	7					
					5				5015671	5015670
						7			5015671	5103214
						5			5103215	
							5	5		

2-D4

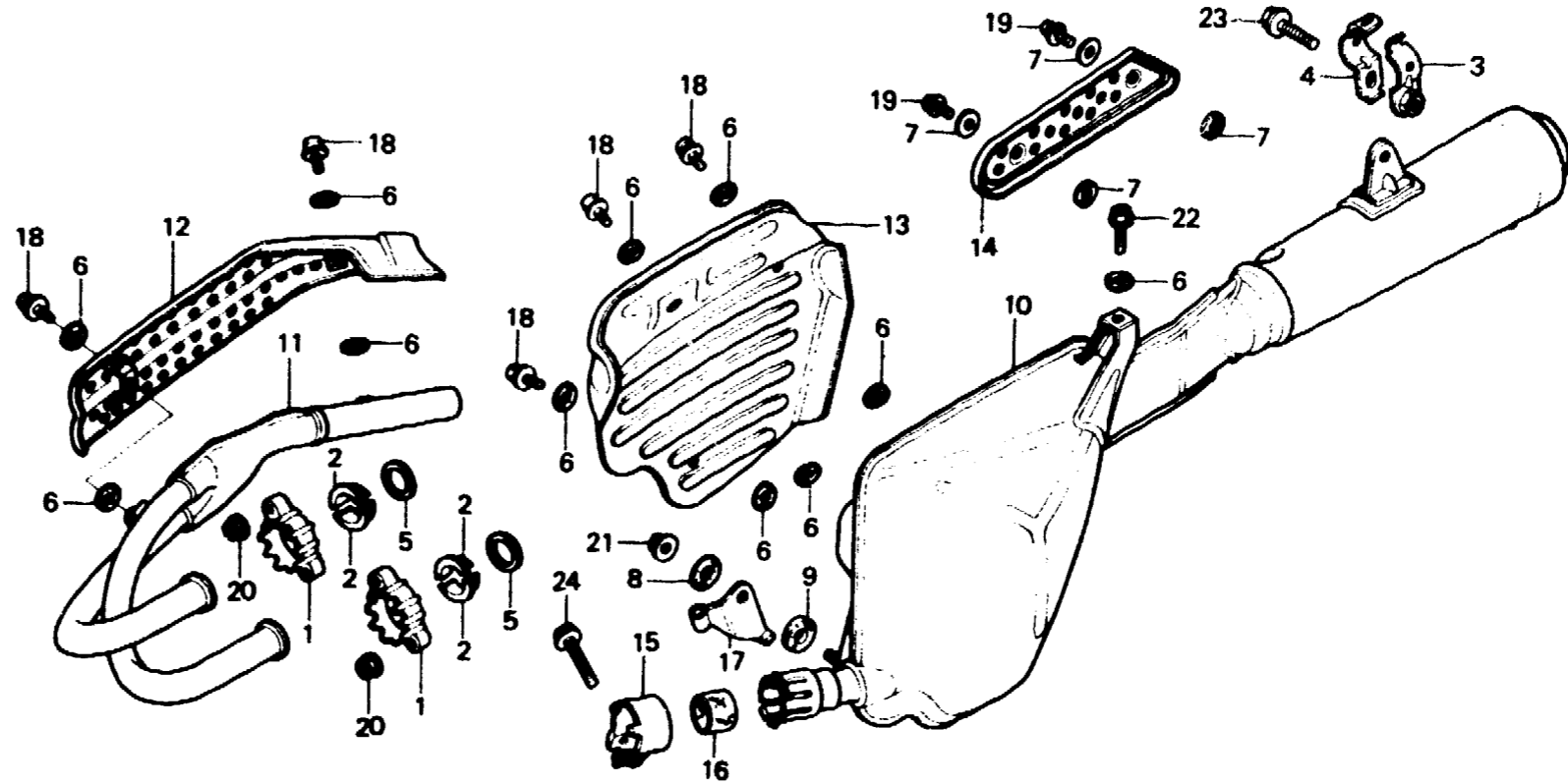
F-17

**Exhaust muffler
(XL250S·SZ·SA·SB)**

**Pot d'échappement
(XL250S·SZ·SA·SB)**

**Auspufftopf
(XL250S·SZ·SA·SB)**

**Silenciador
(XL250S·SZ·SA·SB)**



←FWD

B428-30

Service item	F.R.T.	Ref. No.	Part No.	Description	Reqd. No.					Serial No.	Area code
					S	Sz	SA	Sb	Rc		
		19	93891-06012-00	SCREW-WASHER, 6X12	2					5015671	
						2				5103215	
		20	94050-06000	NUT, FLANGE, 6MM	4	4	4	4			
		21	94050-08000	NUT, FLANGE, 8MM	1	1	1	1			
		22	95700-06012-00	BOLT, FLANGE, 6X12	1	1	1	1			
		23	95700-08020-00	BOLT, FLANGE, 8X20	1	1	1	1			
		24	95728-08035-00	BOLT, FLANGE, 8X35	1	1	1	1			

2-D5

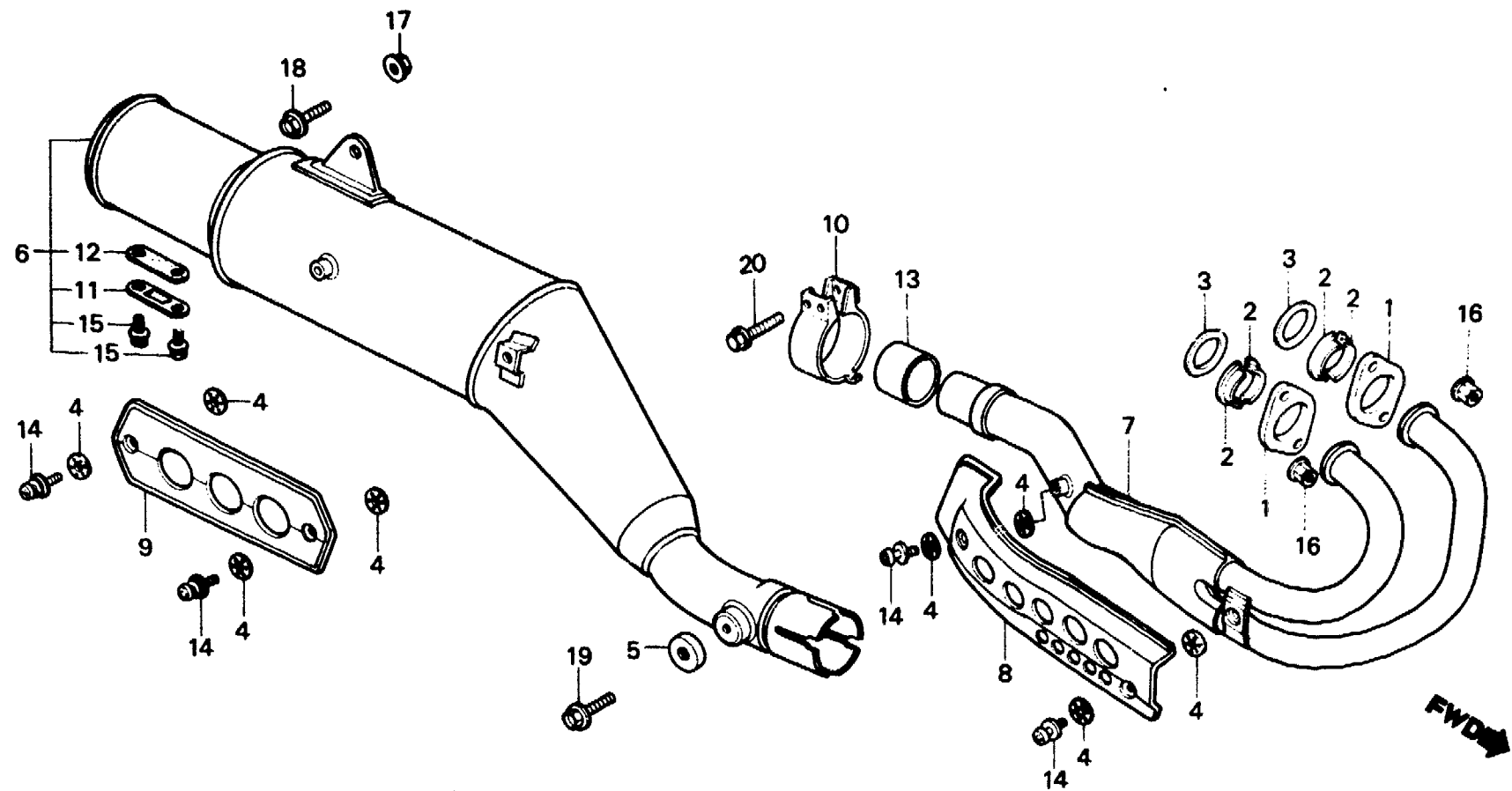
F-17-1

**Exhaust muffler
(XL250Rc)**

**Pot d'échappement
(XL250Rc)**

**Auspufftopf
(XL250Rc)**

**Silenciador
(XL250Rc)**



BKB7-15A

Service item	F.R.T.	Ref. No.	Part No.	Description	Reqd. No.					Serial No.	Area code
					S	Sz	SA	Sb	Rc		
GASKET, EX. PIPE (ONE OR ALL)	0.2	1	18231-429-000	JOINT, EX. PIPE					2		
MUFFLER COMP., EX.		2	18233-435-000	COLLAR, EX. PIPE JOINT					4		
PIPE COMP., EX.		3	18291-216-000	GASKET, EX. PIPE					2		
PROTECTOR, EX. PIPE	0.1	4	18292-415-000	PACKING, PROTECTOR					8		
PROTECTOR, MUFFLER		5	18295-429-000	PACKING B, MUFFLER					1		
		6	18310-KB7-000	MUFFLER COMP., EX.					1		B,DK,DM,E,ED,F1,F2,IT SA,SD,SW,U G1,G2
			18310-KB7-611	MUFFLER COMP., EX.					1		
			18310-KB7-670	MUFFLER COMP., EX.					1		CM
		7	18320-KB7-000	PIPE COMP., EX.					1		B,CM,DK,DM,E,ED,F1,F2 IT,SA,SD,SW,U
			18320-KB7-611	PIPE COMP., EX.					1		G1
			18320-KB7-631	PIPE COMP., EX.					1		G2
		8	18325-KB7-000	PROTECTOR, EX. PIPE					1		
		9	18355-KB7-000	PROTECTOR, MUFFLER					1		
		10	18371-KB7-000	BAND, MUFFLER					1		
		11	18373-429-000	LID, MUFFLER					1		CM

2-D6

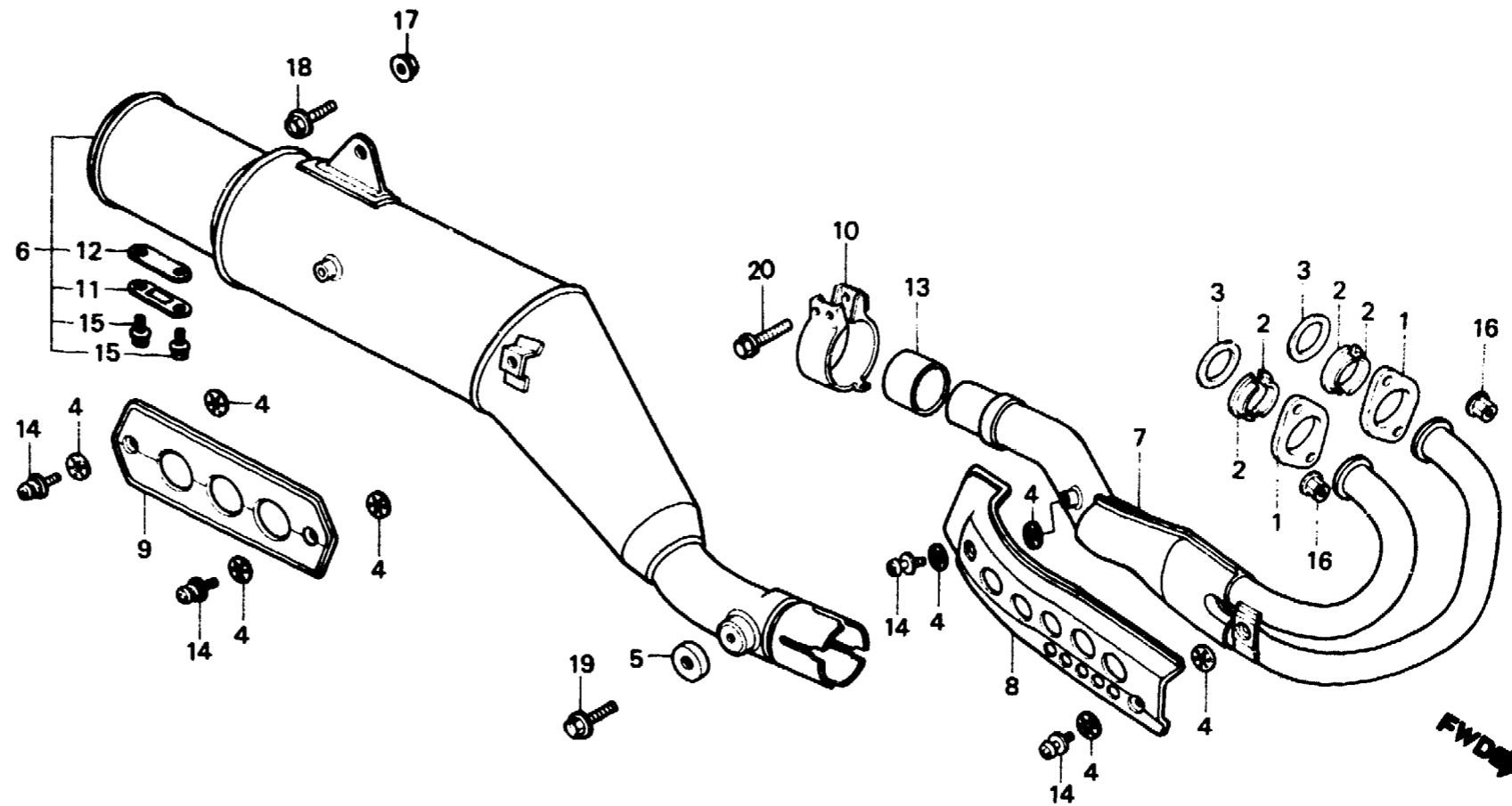
F-17-1

**Exhaust muffler
(XL250Rc)**

**Pot d'échappement
(XL250Rc)**

**Auspufftopf
(XL250Rc)**

**Silenciador
(XL250Rc)**



BKB7-15A

Service item	F.R.T.	Ref. No.	Part No.	Description	Reqd. No.					Serial No.	Area code
					S	Sz	SA	Se	Rc		
		12	18374-429-000	PACKING, MUFFLER LID					1		CM
		13	18391-410-000	PACKING, MUFFLER					1		
		14	90136-MC7-000	SCREW-WASHER, 6X12					4		
		15	93481-06012-07	BOLT-WASHER, 6X12					2		CM
		16	94050-06000	NUT, FLANGE, 6MM					4		
		17	94050-08000	NUT, FLANGE, 8MM					1		
		18	95700-08014-00	BOLT, FLANGE, 8X14					1		
		19	95700-08016-00	BOLT, FLANGE, 8X16					1		
		20	95700-08032-07	BOLT, FLANGE, 8X32					1		

2-D7

F-18

Pedal • Kick starter arm • Step

(XL250S,Sz,SA,Sb-B,CM,DK,DM,
E,ED,F,F1,F2,SA,SD,SW,U)

Pédale • Bras de kick de démarrage •

Repose pieds

(XL250S,Sz,SA,Sb-B,CM,DK,DM,
E,ED,F,F1,F2,SA,SD,SW,U)

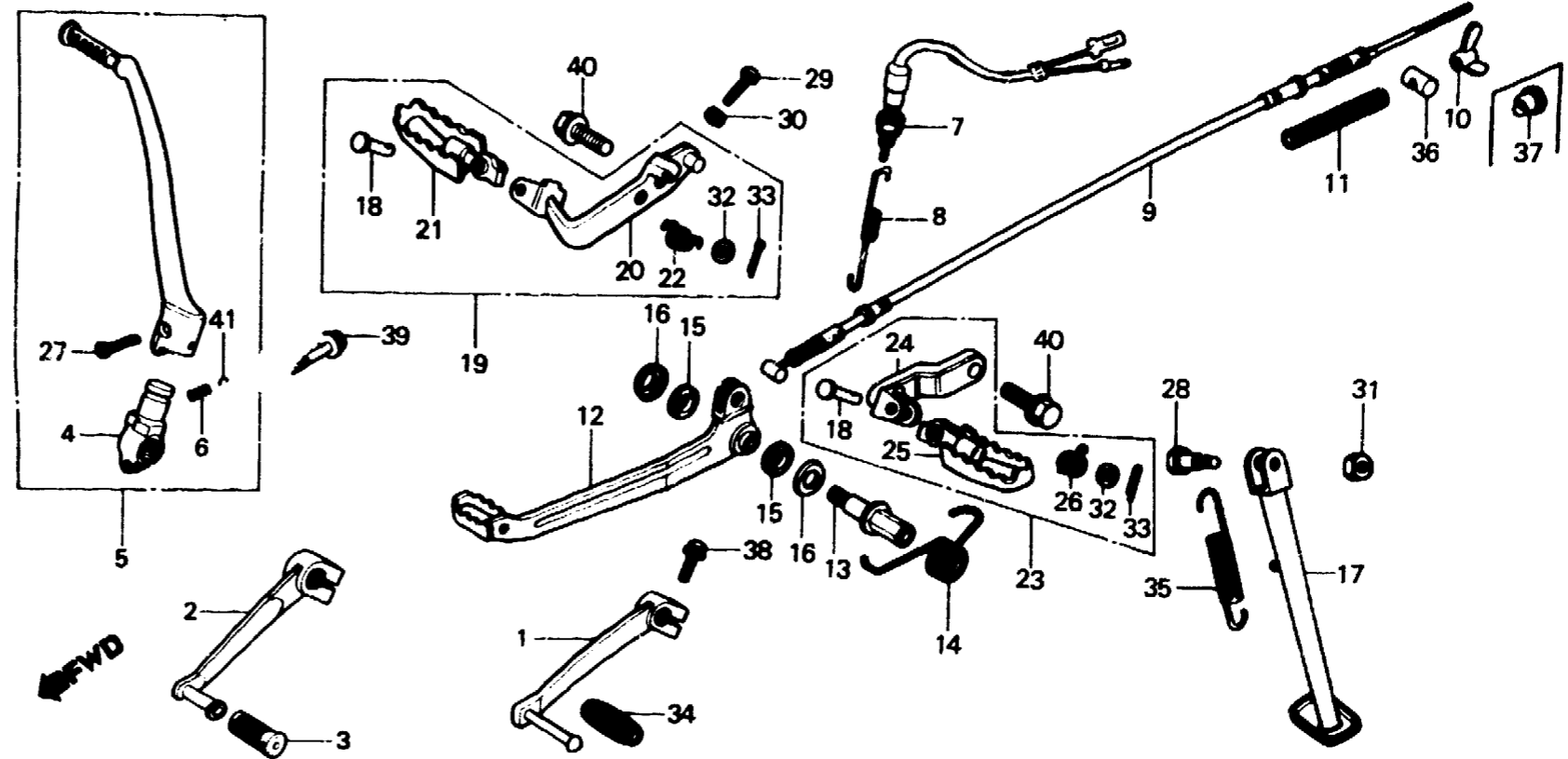
Pedal • Kickstarterarm • Tritt

(XL250S,Sz,SA,Sb-B,CM,DK,DM,
E,ED,F,F1,F2,SA,SD,SW,U)

Pedal • Brazo de arranque de pie •

Estribo

(XL250S,Sz,SA,Sb-B,CM,DK,DM,
E,ED,F,F1,F2,SA,SD,SW,U)



B428-48B

Service item	F.R.T.	Ref. No.	Part No.	Description	Reqd. No.				Serial No.	Area code
					S	Sz	SA	Sb Rc		
PEDAL, GEAR CHANGE	0.1	1	24700-428-000	PEDAL, GEAR CHANGE	1	1	1		B,CM,DK,DM,E,ED,F,F1 F2,SA,SD,SW,U	
ARM ASSY., KICK STARTER		2	24700-428-730	PEDAL, GEAR CHANGE				1	B,CM,DK,DM,E,ED,F1,F2 SA,SD,SW,U	
SWITCH ASSY., RR. STOP		7	35350-149-003	SWITCH ASSY., RR. STOP	1	1	1	1	B,CM,DK,DM,E,ED,F,F1 F2,SA,SD,SW,U	
CABLE COMP., RR. BRAKE		8	35357-428-000	SPRING, STOP SWITCH	1	1	1	1	B,CM,DK,DM,E,ED,F,F1 F2,SA,SD,SW,U	
ARM ASSY., STEP		3	24781-419-000	RUBBER, GEAR CHANGE PEDAL				1	B,CM,DK,DM,E,ED,F1,F2 SA,SD,SW,U	
INC. RELATIVE PART	0.3	4	28241-428-300	JOINT, KICK ARM	1	1			CM,DK,DM,E,ED,F,SA,SW U	
PEDAL COMP., BRAKE	0.2		28241-428-871	JOINT, KICK ARM			1	1	B,CM,DK,DM,E,ED,F1,F2 SA,SD,SW,U	
SPRING, BRAKE PEDAL		5	28300-428-000	ARM ASSY., KICK STARTER	1	1			CM,DK,DM,E,ED,F,SA,SW U	
BAR, SIDE STAND			28300-428-871	ARM ASSY., KICK STARTER			1	1	B,CM,DK,DM,E,ED,F1,F2 SA,SD,SW,U	
		6	28333-300-000	SPRING, KICK STARTER STOPPER	1	1	1	1	B,CM,DK,DM,E,ED,F,F1 F2,SA,SD,SW,U	

2-D8

F-18

Pedal • Kick starter arm • Step

(XL250S, Sz, SA, Sb-B, CM, DK, DM, E, ED, F, F1, F2, SA, SD, SW, U)

Pédale • Bras de kick de démarrage •

Repose pieds

(XL250S, Sz, SA, Sb-B, CM, DK, DM, E, ED, F, F1, F2, SA, SD, SW, U)

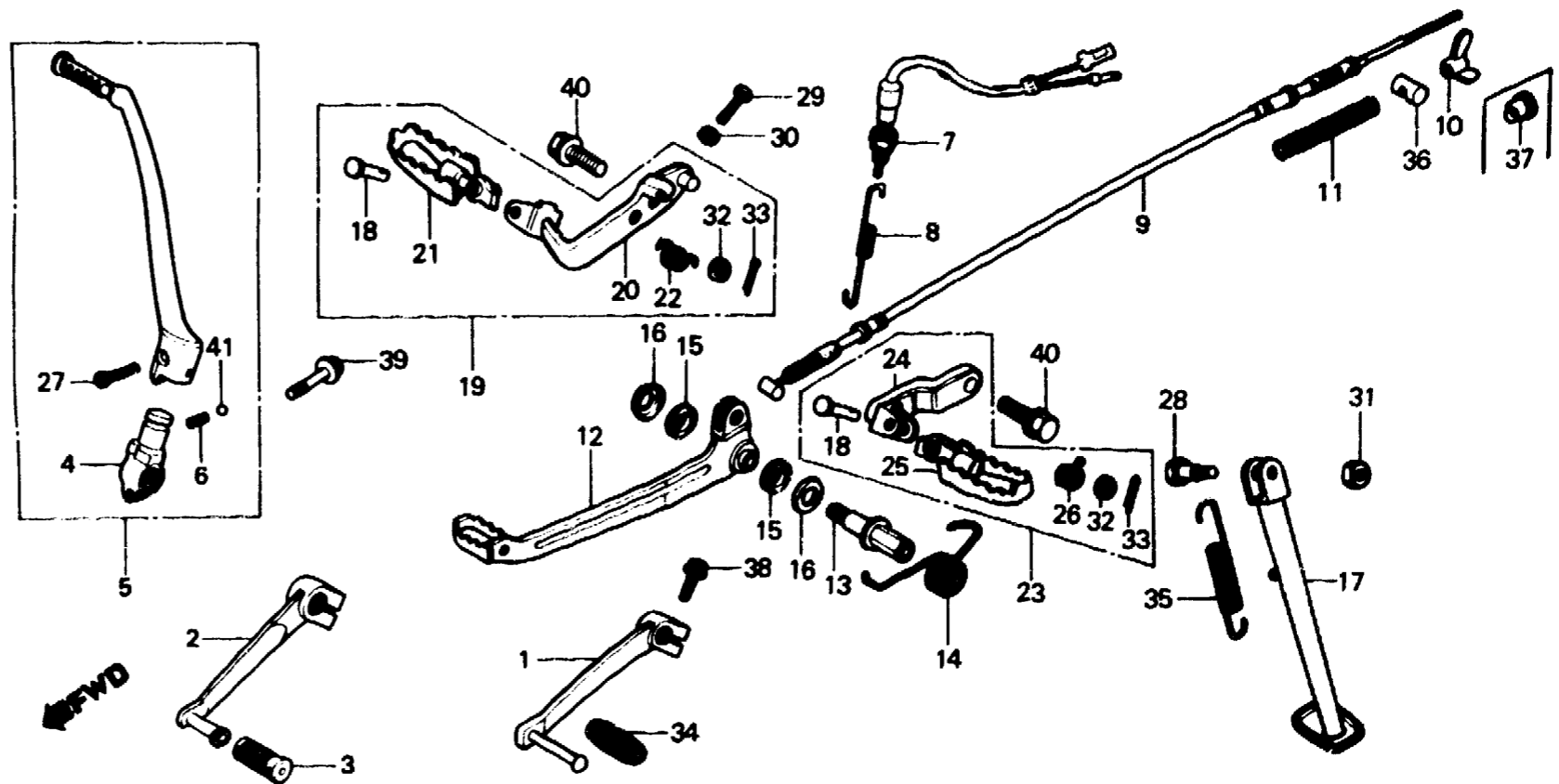
Pedal • Kickstarterarm • Tritt

(XL250S, Sz, SA, Sb-B, CM, DK, DM, E, ED, F, F1, F2, SA, SD, SW, U)

Pedal • Brazo de arranque de pie •

Estribo

(XL250S, Sz, SA, Sb-B, CM, DK, DM, E, ED, F, F1, F2, SA, SD, SW, U)



B428-48B

Service item	F.R.T.	Ref. No.	Part No.	Description	Reqd. No.				Serial No.	Area code
					S	Sz	SA	Sb		
		9	43450-428-000	CABLE COMP., RR. BRAKE	1	1				CM, DK, DM, E, ED, F, SA, SW, U
			43450-428-870	CABLE COMP., RR. BRAKE			1	1		B, CM, DK, DM, E, ED, F1, F2, SA, SD, SW, U
		10	43459-434-000	NUT, BRAKE ADJUSTING					1	B, CM, DK, DM, E, ED, F1, F2, SA, SD, SW, U
		11	45452-044-300	SPRING A, BRAKE CABLE	1	1	1	1		B, CM, DK, DM, E, ED, F, F1, F2, SA, SD, SW, U
		12	46500-428-000	PEDAL COMP., BRAKE	1	1	1	1		B, CM, DK, DM, E, ED, F, F1, F2, SA, SD, SW, U
		13	46510-428-000	SHAFT, RR. BRAKE	1	1	1	1		B, CM, DK, DM, E, ED, F, F1, F2, SA, SD, SW, U
		14	46514-428-000	SPRING, BRAKE PEDAL	1	1	1	1		B, CM, DK, DM, E, ED, F, F1, F2, SA, SD, SW, U
		15	46516-430-000	DUST SEAL, BRAKE PEDAL	2	2	2	2		B, CM, DK, DM, E, ED, F, F1, F2, SA, SD, SW, U
		16	46518-361-000	WASHER, BRAKE PIVOT	2	2	2	2		B, CM, DK, DM, E, ED, F, F1, F2, SA, SD, SW, U

2-D9

F-18

Pedal • Kick starter arm • Step

(XL250S, Sz, SA, Sb-B, CM, DK, DM, E, ED, F, F1, F2, SA, SD, SW, U)

Pédale • Bras de kick de démarrage •

Repose pieds

(XL250S, Sz, SA, Sb-B, CM, DK, DM, E, ED, F, F1, F2, SA, SD, SW, U)

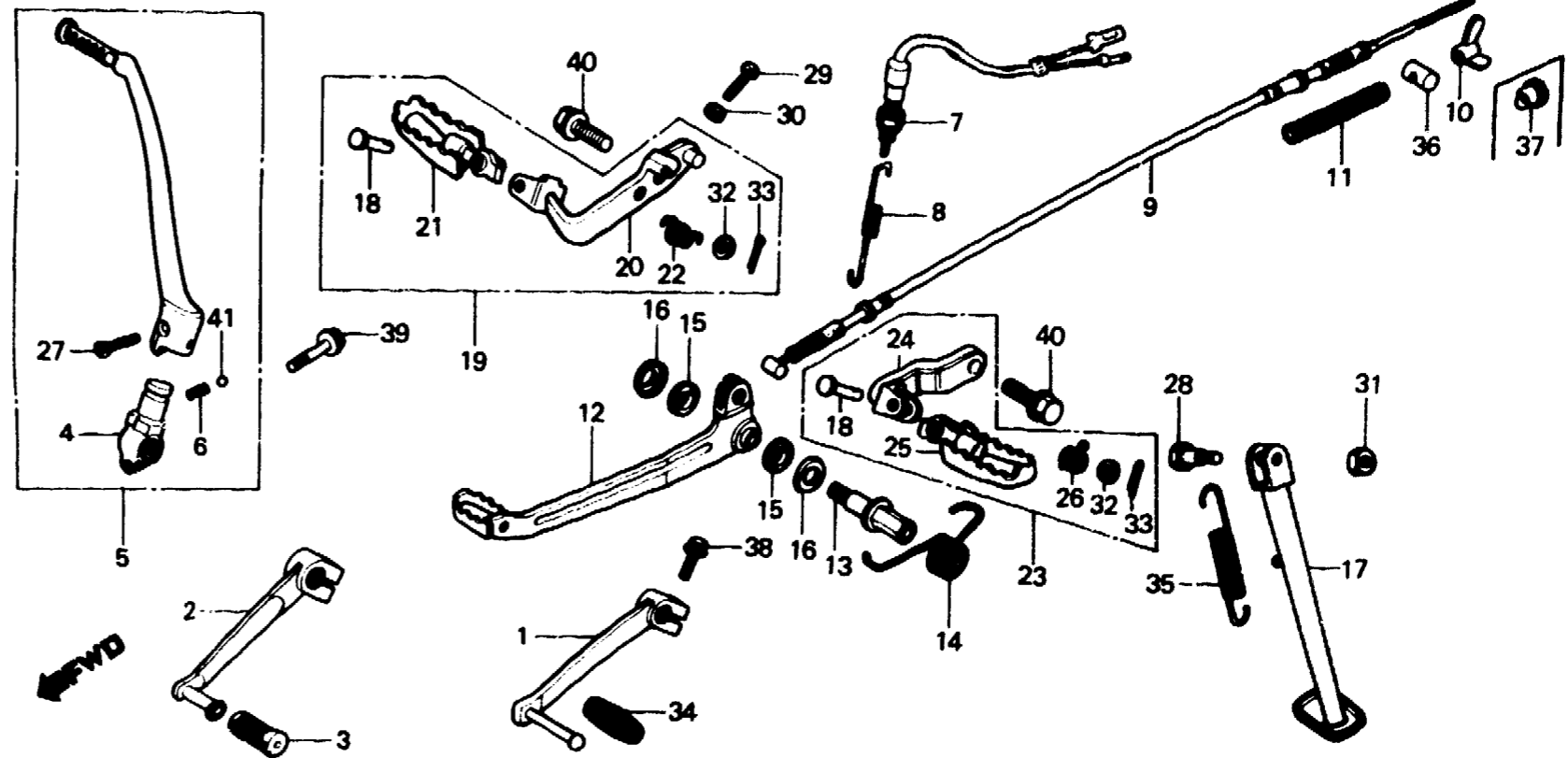
Pedal • Kickstarterarm • Tritt

(XL250S, Sz, SA, Sb-B, CM, DK, DM, E, ED, F, F1, F2, SA, SD, SW, U)

Pedal • Brazo de arranque de pie •

Estribo

(XL250S, Sz, SA, Sb-B, CM, DK, DM, E, ED, F, F1, F2, SA, SD, SW, U)



B428-48B

Service item	F.R.T.	Ref. No.	Part No.	Description	Reqd. No. XL250					Serial No.	Area code
					S	Sz	SA	Sb	Rc		
		17	50530-428-000	BAR, SIDE STAND	1	1	1				B, CM, DK, DM, E, ED, F, F1, F2, SA, SD, SW, U
			50530-428-830	BAR, SIDE STAND					1		B, DK, DM, E, ED, F1, F2, SA, SD, SW, U
		18	50603-033-000	PIN, STEP BAR JOINT	2	2	2	2			B, CM, DK, DM, E, ED, F, F1, F2, SA, SD, SW, U
		19	50610-428-000	ARM ASSY., R. STEP	1	1	1	1			B, CM, DK, DM, E, ED, F, F1, F2, SA, SD, SW, U
		20	50615-428-000	ARM COMP., R. STEP	1	1	1	1			B, CM, DK, DM, E, ED, F, F1, F2, SA, SD, SW, U
		21	50616-428-000	STEP COMP., R.	1	1	1	1			B, CM, DK, DM, E, ED, F, F1, F2, SA, SD, SW, U
		22	50617-329-000	SPRING, R. STEP RETURN	1	1	1	1			B, CM, DK, DM, E, ED, F, F1, F2, SA, SD, SW, U
		23	50620-428-000	ARM ASSY., L. STEP	1	1	1	1			B, CM, DK, DM, E, ED, F, F1, F2, SA, SD, SW, U
		24	50624-428-000	ARM COMP., L. STEP	1	1	1	1			B, CM, DK, DM, E, ED, F, F1, F2, SA, SD, SW, U
		25	50642-428-000	STEP COMP., L.	1	1	1	1			B, CM, DK, DM, E, ED, F, F1, F2, SA, SD, SW, U

2-D10

F-18

Pedal • Kick starter arm • Step

(XL250S, Sz, SA, Sb-B, CM, DK, DM,
E, ED, F, F1, F2, SA, SD, SW, U)

Pédale • Bras de kick de démarrage •

Repose pieds

(XL250S, Sz, SA, Sb-B, CM, DK, DM,
E, ED, F, F1, F2, SA, SD, SW, U)

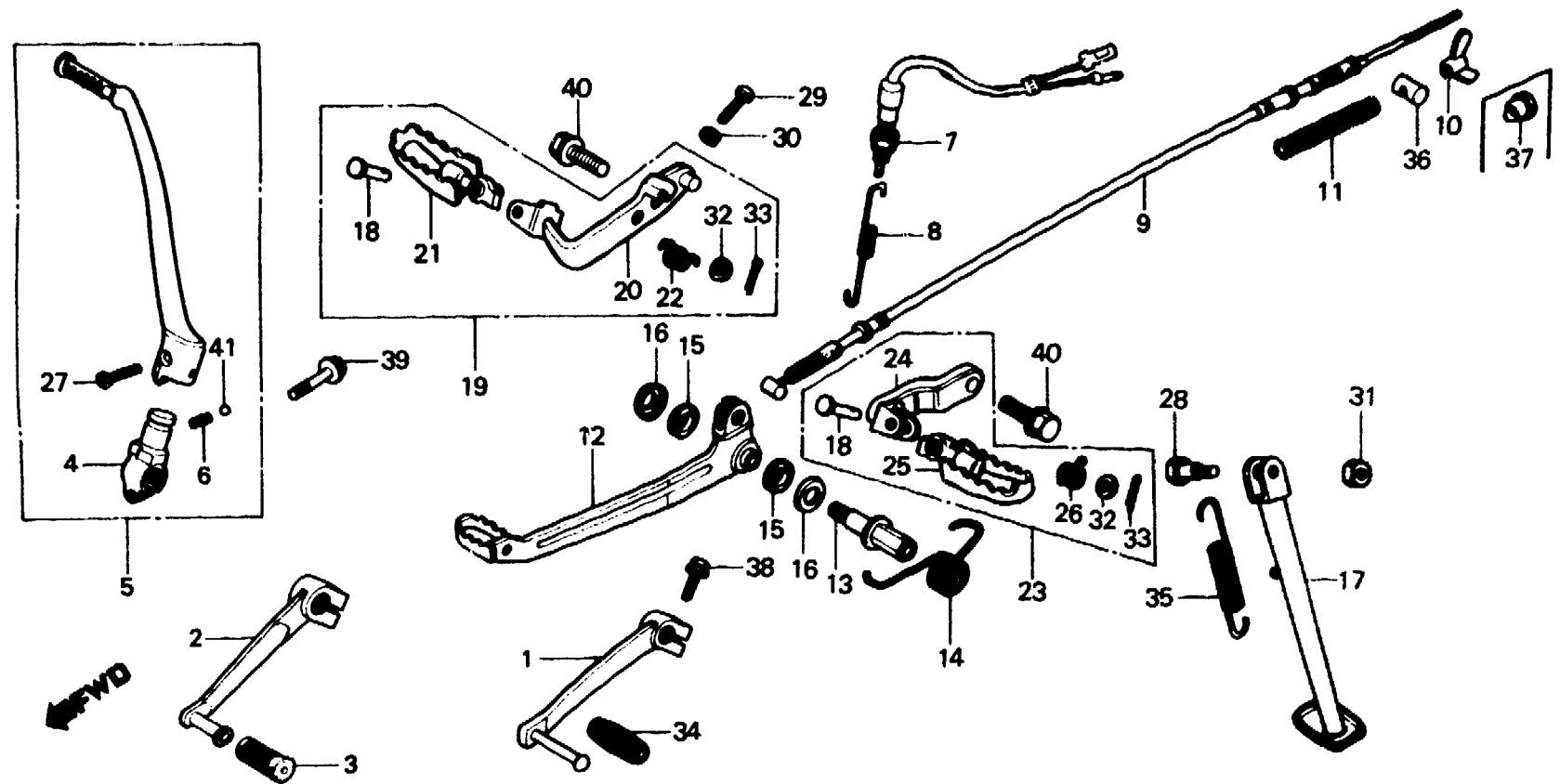
Pedal • Kickstarterarm • Tritt

(XL250S, Sz, SA, Sb-B, CM, DK, DM,
E, ED, F, F1, F2, SA, SD, SW, U)

Pedal • Brazo de arranque de pie •

Estribo

(XL250S, Sz, SA, Sb-B, CM, DK, DM,
E, ED, F, F1, F2, SA, SD, SW, U)



B428-48B

Service item	F.R.T.	Ref. No.	Part No.	Description	Reqd. No.					Serial No.	Area code
					S	Sz	SA	Sb	Rc		
		26	50644-329-000	SPRING, L. STEP RETURN	1	1	1	1			B, CM, DK, DM, E, ED, F, F1 F2, SA, SD, SW, U
		27	90101-329-000	BOLT, KICK ARM	1	1	1	1			B, CM, DK, DM, E, ED, F, F1 F2, SA, SD, SW, U
		28	90108-283-000	SCREW, SIDE STAND PIVOT	1	1	1	1			B, CM, DK, DM, E, ED, F, F1 F2, SA, SD, SW, U
		29	93500-06025	SCREW, PAN, 6X25	1	1	1	1			B, CM, DK, DM, E, ED, F, F1 F2, SA, SD, SW, U
		30	94001-06000	NUT, HEX., 6MM	1	1	1	1			B, CM, DK, DM, E, ED, F, F1 F2, SA, SD, SW, U
		31	94030-10000	NUT, HEX., 10MM	1	1	1	1			B, CM, DK, DM, E, ED, F, F1 F2, SA, SD, SW, U
		32	94101-08000	WASHER, PLAIN, 8MM	2	2	2	2			B, CM, DK, DM, E, ED, F, F1 F2, SA, SD, SW, U
		33	94201-16150	PIN, SPLIT, 1.6X15	2	2	2	2			B, CM, DK, DM, E, ED, F, F1 F2, SA, SD, SW, U
		34	95011-40000	RUBBER, CHANGE PEDAL	1	1	1				B, CM, DK, DM, E, ED, F, F1 F2, SA, SD, SW, U
		35	95014-72302	SPRING C, SIDE STAND	1	1	1	1			B, CM, DK, DM, E, ED, F, F1 F2, SA, SD, SW, U

2-D11

F-18

Pedal • Kick starter arm • Step

(XL250S, Sz, SA, Sb-B, CM, DK, DM, E, ED, F, F1, F2, SA, SD, SW, U)

Pédale • Bras de kick de démarrage •

Repose pieds

(XL250S, Sz, SA, Sb-B, CM, DK, DM, E, ED, F, F1, F2, SA, SD, SW, U)

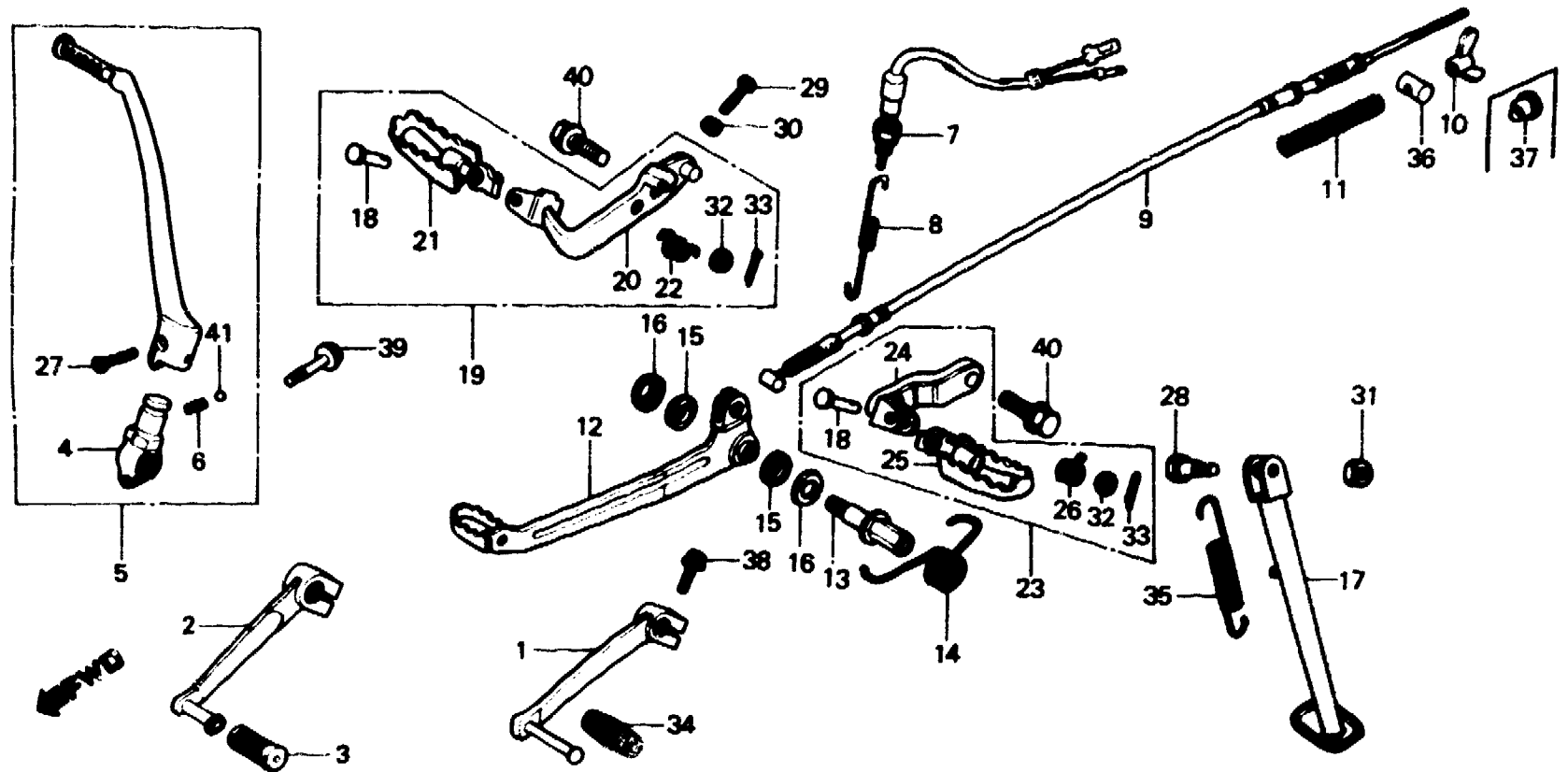
Pedal • Kickstarterarm • Tritt

(XL250S, Sz, SA, Sb-B, CM, DK, DM, E, ED, F, F1, F2, SA, SD, SW, U)

Pedal • Brazo de arranque de pie •

Estribo

(XL250S, Sz, SA, Sb-B, CM, DK, DM, E, ED, F, F1, F2, SA, SD, SW, U)



8428-488

Service item	F.R.T.	Ref. No.	Part No.	Description	Reqd. No. XL250					Serial No.	Area code
					S	Sz	SA	Sb	Rc		
		36	95015-32001	JOINT B, BRAKE ARM	1	1	1	1			B, CM, DK, DM, E, ED, F, F1, F2, SA, SD, SW, U
		37	95015-42000	NUT B, BRAKE ROD ADJUSTING	1	1	1				B, CM, DK, DM, E, ED, F, F1, F2, SA, SD, SW, U
		38	95700-06020-00	BOLT, FLANGE, 6X20	1	1	1	1			B, CM, DK, DM, E, ED, F, F1, F2, SA, SD, SW, U
		39	95700-08028-00	BOLT, FLANGE, 8X28	1	1	1	1			B, CM, DK, DM, E, ED, F, F1, F2, SA, SD, SW, U
		40	95700-12025-00	BOLT, FLANGE, 12X25	2	2	2	2			B, CM, DK, DM, E, ED, F, F1, F2, SA, SD, SW, U
		41	96211-08000	BALL, STEEL, #8 (1/4)	1	1	1	1			B, CM, DK, DM, E, ED, F, F1, F2, SA, SD, SW, U

2-D12

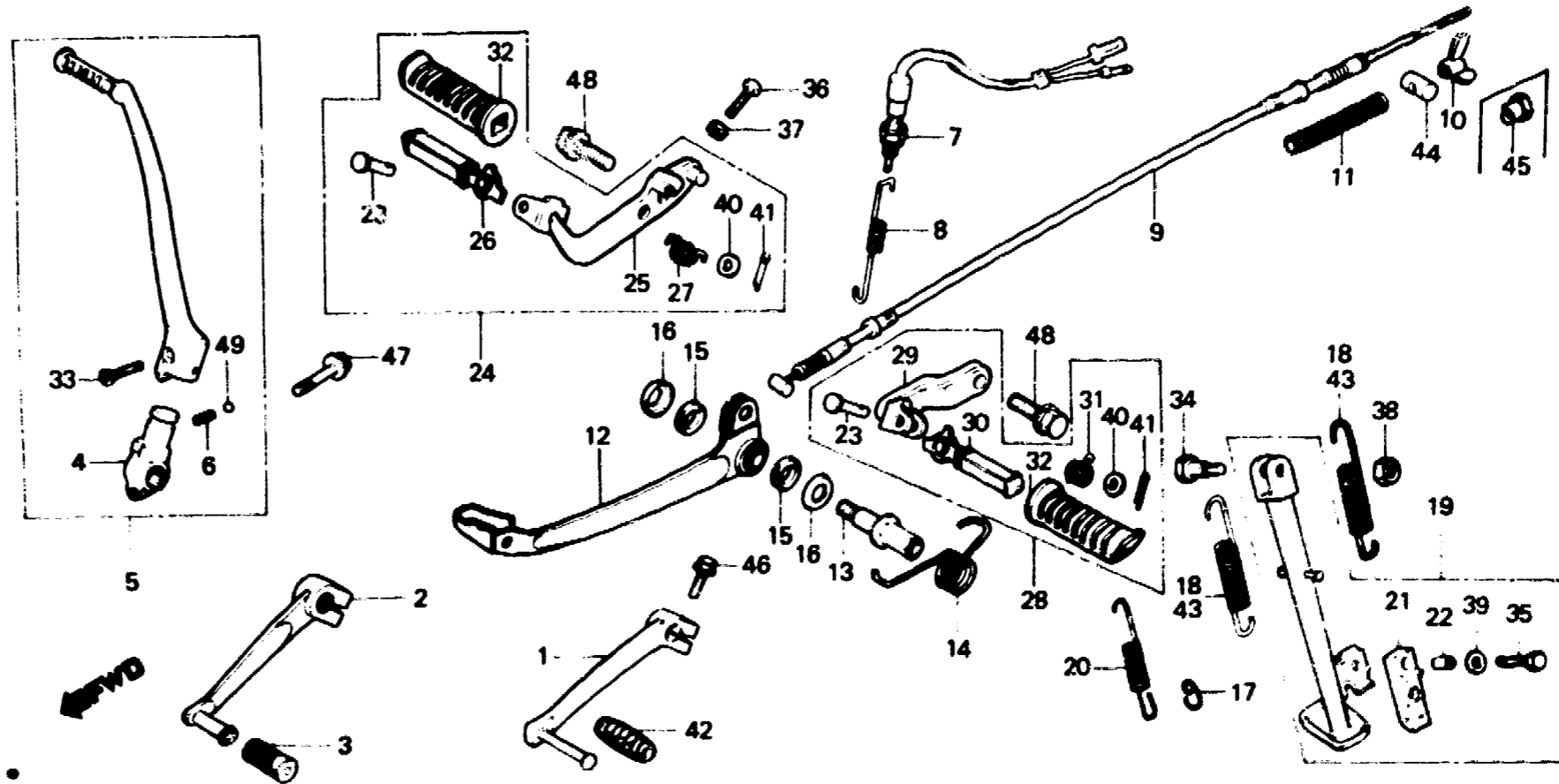
F-18-1

**Pedal • Kick starter arm • Step
(XL250S,SA,SB-G,G1,G2)**

**Pédale • Bras de kick de
démarrage • Repose pieds
(XL250S,SA,SB-G,G1,G2)**

**Pedal • Kickstarterarm • Tritt
(XL250S,SA,SB-G,G1,G2)**

**Pedal • Brazo de arranque de pie •
Estribo (XL250S,SA,SB-G,G1,G2)**



8428 49A

Service item	F.R.T.	Ref. No.	Part No.	Description	Reqd No.				Serial No.	Area code
					S	Sz	SA	SA Rc		
PEDAL, GEAR CHANGE	0.1	1	24700-428-000	PEDAL, GEAR CHANGE	1		1		G,G1,G2	
ARM ASSY., KICK STARTER		2	24700-428-730	PEDAL, GEAR CHANGE				1	G1,G2	
SWITCH ASSY., RR. STOP		3	24781-419-000	RUBBER, GEAR CHANGE PEDAL				1	G1,G2	
CABLE COMP., RR. BRAKE		4	28241-428-300	JOINT, KICK ARM	1				G	
ARM ASSY., STEP		5	28241-428-871	JOINT, KICK ARM			1	1	G1,G2	
INC. RELATIVE PART		5	28300-428-000	ARM ASSY., KICK STARTER	1				G	
PEDAL COMP., BRAKE	0.3		28300-428-871	ARM ASSY., KICK STARTER			1	1	G1,G2	
SPRING, BRAKE PEDAL	0.2	6	28333-300-000	SPRING, KICK STARTER STOPPER	1		1	1	G,G1,G2	
BAR ASSY., SIDE STAND		7	35350-149-003	SWITCH ASSY., RR. STOP	1		1	1	G,G1,G2	
		8	35357-428-000	SPRING, STOP SWITCH	1		1	1	G,G1,G2	
		9	43450-428-000	CABLE COMP., RR. BRAKE	1		1	1	G,G1,G2	
		10	43459-434-000	NUT, BRAKE ADJUSTING				1	G1,G2	
		11	45452-044-300	SPRING A, BRAKE CABLE	1		1	1	G,G1,G2	
		12	46500-428-610	PEDAL COMP., BRAKE	1		1	1	G,G1,G2	

2-D13

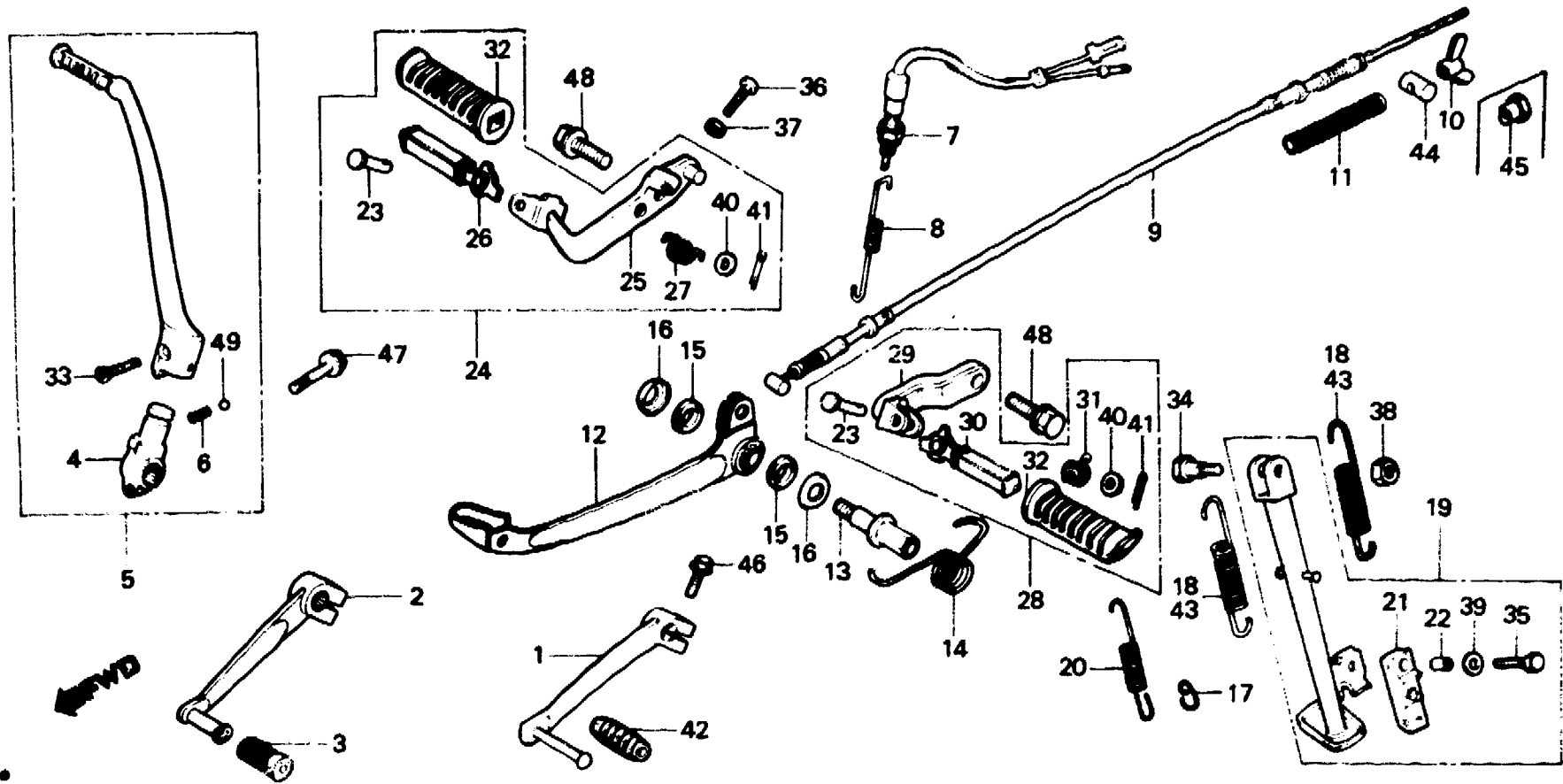
F-18-1

Pedal • Kick starter arm • Step
(XL250S,SA,SB-G,G1,G2)

Pédale • Bras de kick de
démarrage • Reponse pieds
(XL250S,SA,SB-G,G1,G2)

Pedal • Kickstarterarm • Tritt
(XL250S,SA,SB-G,G1,G2)

Pedal • Brazo de arranque de pie •
Estribo (XL250S,SA,SB-G,G1,G2)



B42R-49A

Service item	F.R.T.	Ref. No.	Part No.	Description	Reqd. No.				Serial No.	Area code
					S	Sz	SA	SB		
		13	46510-428-000	SHAFT, RR. BRAKE	1	1	1		G,G1,G2	
		14	46514-428-000	SPRING, BRAKE PEDAL	1	1	1		G,G1,G2	
		15	46516-430-000	DUST SEAL, BRAKE PEDAL	2	2	2		G,G1,G2	
		16	46518-361-000	WASHER, BRAKE PIVOT	2	2	2		G,G1,G2	
		17	50525-428-850	HOOK, SIDE STAND SPRING			1		G1,G2	
		18	50535-429-000	SPRING, SIDE STAND	2			5023431	G	
		19	50540-428-610	BAR ASSY., SIDE STAND	1	1	1		G1,G2	
			50540-428-850	BAR ASSY., SIDE STAND			1		G,G1,G2	
		20	50542-438-000	SUB SPRING, SIDE STAND			1		G1,G2	
		21	50548-356-700	RUBBER, STAND	1	1	1		G,G1,G2	
		22	50549-356-700	COLLAR, STAND RUBBER SETTING	1	1	1		G,G1,G2	
		23	50603-033-000	PIN, STEP BAR JOINT	2	2	2		G,G1,G2	

2-D14

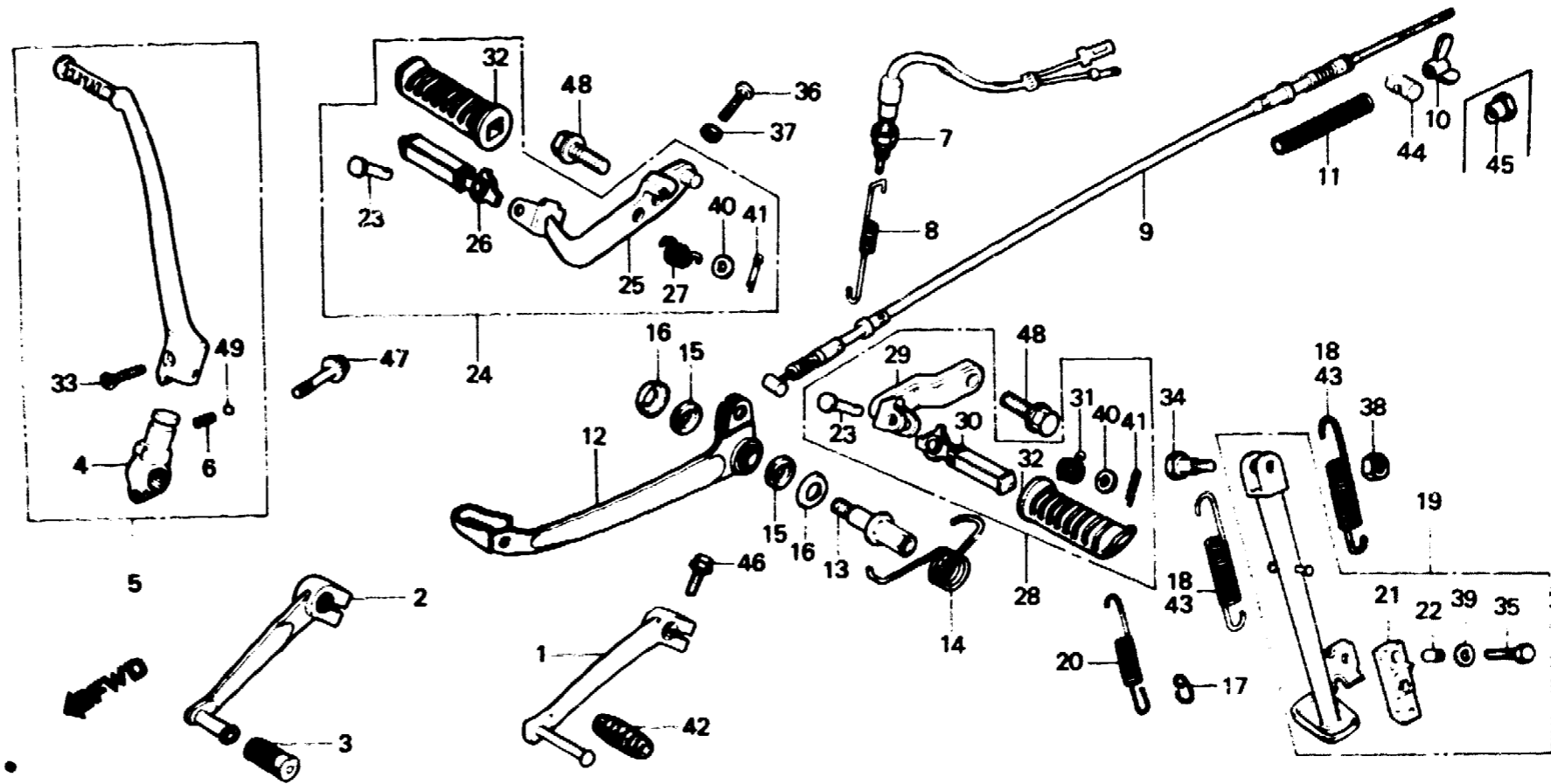
F-18-1

Pedal • Kick starter arm • Step
(XL250S, SA, SB-G, G1, G2)

Pédale • Bras de kick de démarrage • Repose pieds
(XL250S, SA, SB-G, G1, G2)

Pedal • Kickstarterarm • Tritt
(XL250S, SA, SB-G, G1, G2)

Pedal • Brazo de arranque de pie • Estribo
(XL250S, SA, SB-G, G1, G2)



B428-49A

Service item	F.R.T.	Ref. No.	Part No.	Description	Reqd. No.					Serial No.	Area code
					S	Sz	SA	SB	Rc		
		24	50610-428-610	ARM ASSY., R. STEP	1	1	1			G, G1, G2	
		25	50615-428-000	ARM COMP., R. STEP	1	1	1			G, G1, G2	
		26	50616-312-010	ARM COMP., R. STEP	1	1	1			G, G1, G2	
		27	50617-329-000	SPRING, R. STEP RETURN	1	1	1			G, G1, G2	
		28	50620-428-610	ARM ASSY., L. STEP	1	1	1			G, G1, G2	
		29	50624-428-000	ARM COMP., L. STEP	1	1	1			G, G1, G2	
		30	50642-312-010	ARM COMP., L. STEP	1	1	1			G, G1, G2	
		31	50644-329-000	SPRING, L. STEP RETURN	1	1	1			G, G1, G2	
		32	50661-312-000	RUBBER, STEP	2	2	2			G, G1, G2	
		33	90101-329-000	BOLT, KICK ARM	1	1	1			G, G1, G2	
		34	90108-289-000	SCREW, SIDE STAND PIVOT	1	1	1			G, G1, G2	
		35	92000-06028	BOLT, HEX., 6X28	1	1	1			G, G1, G2	
		36	93500-06025	SCREW, PAN, 6X25	1	1	1			G, G1, G2	
		37	94001-06000	NUT, HEX., 6MM	1	1	1			G, G1, G2	

2-D15

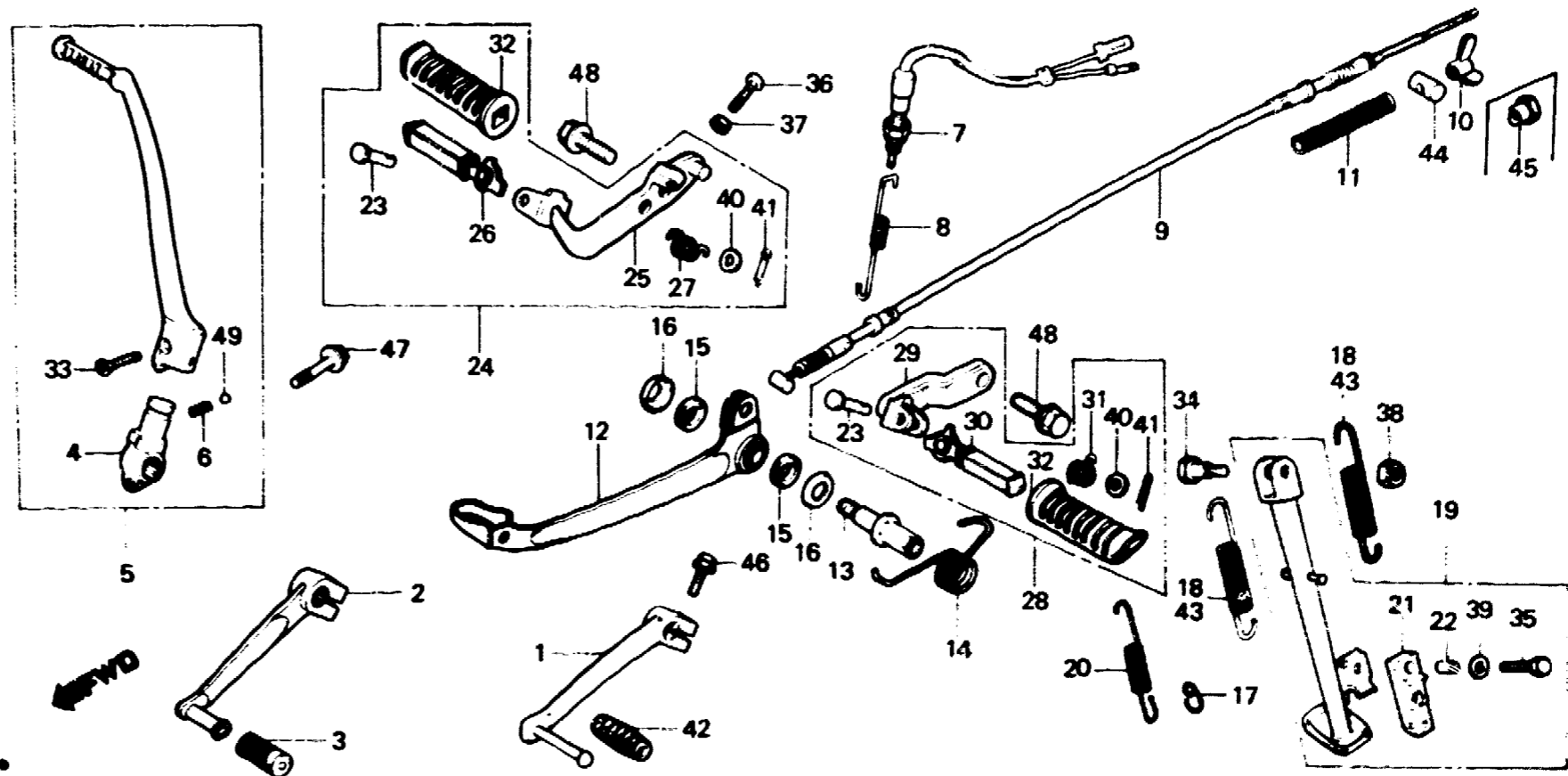
F-18-1

**Pedal • Kick starter arm • Step
(XL250S,SA,SB-G,G1,G2)**

**Pédale • Bras de kick de
démarrage • Repose pieds
(XL250S,SA,SB-G,G1,G2)**

**Pedal • Kickstarterarm • Tritt
(XL250S,SA,SB-G,G1,G2)**

**Pedal • Brazo de arranque de pie •
Estribo (XL250S,SA,SB-G,G1,G2)**



B423-49A

Service item	F.R.T.	Ref. No.	Part No.	Description	Reqd. No. XL250				Serial No.	Area code
					S	Sz	SA	SA		
		38	94030-10000	NUT, HEX., 10MM	1		1			G,G1,G2
		39	94101-06000	WASHER, PLAIN, 6MM	1		1			G,G1,G2
		40	94101-08000	WASHER, PLAIN, 8MM	2		2			G,G1,G2
		41	94201-16150	PIN, SPLIT, 1.6X15	2		2			G,G1,G2
		42	95011-40000	RUBBER, CHANGE PEDAL	1		1			G,G1,G2
		43	95014-72302	SPRING C, SIDE STAND	2				5023430	G
		44	95015-32001	JOINT B, BRAKE ARM	1		1			G,G1,G2
		45	95015-42000	NUT B, BRAKE ROD ADJUSTING	1		1			G,G1,G2
		46	95700-06020-00	SOULT, FLANGE, 6X20	1		1			G,G1,G2
		47	95700-08028-00	BOLT, FLANGE, 8X28	1		1			G,G1,G2
		48	95700-12025-00	BOLT, FLANGE, 12X25	2		2			G,G1,G2
		49	96211-08000	BALL, STEEL, #8 (1/4)	1		1			G,G1,G2

2-D16

F-18-2

Pedal • Kick starter arm • Step

(XL250rc-B,CM,DK,DM,E.)
(ED,F1,F2,IT,SA,SD,SW,U)

Pédale • Bras de kick de démarrage •

Repose pieds

(XL250rc-B,CM,DK,DM,E.)
(ED,F1,F2,IT,SA,SD,SW,U)

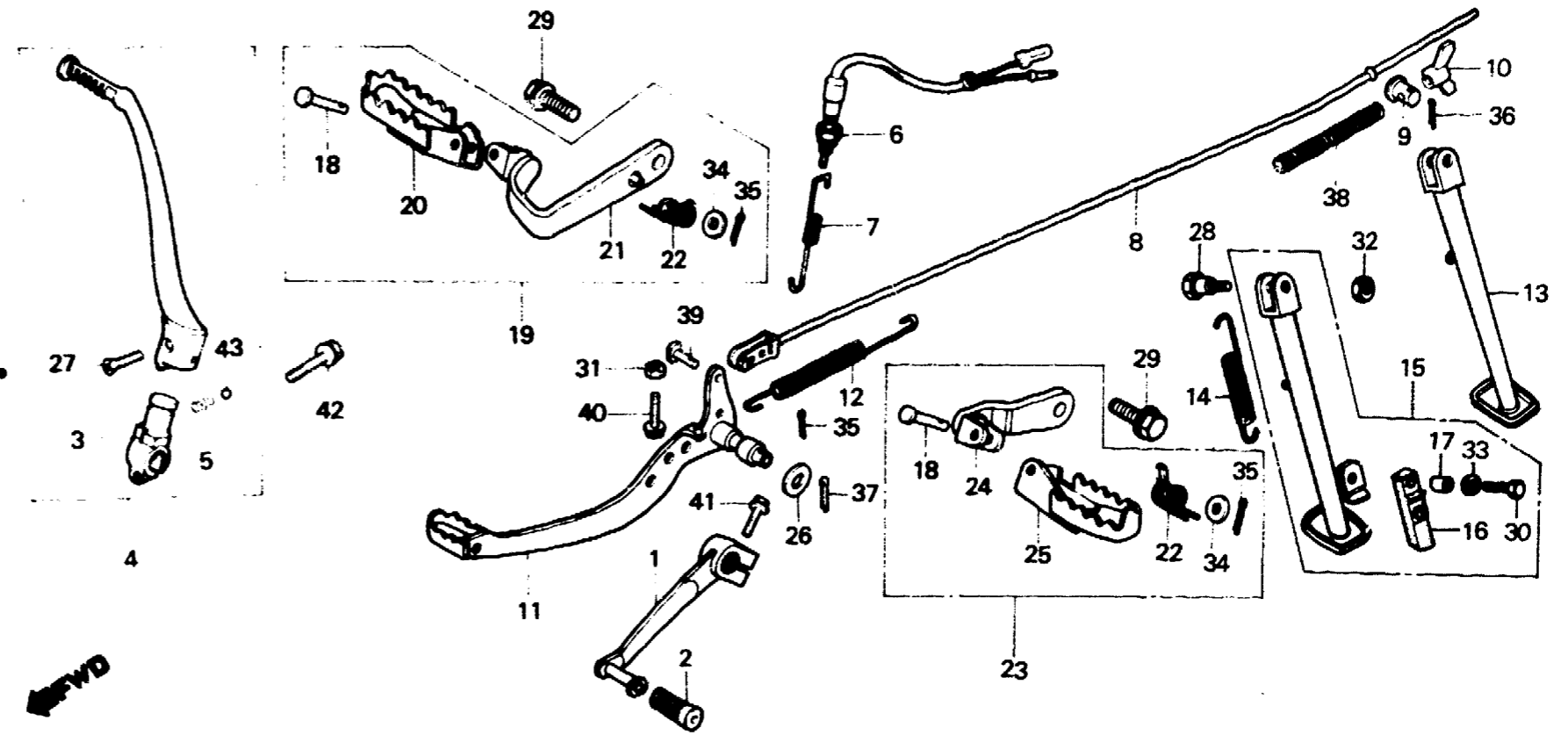
Pedal • Kickstarterarm • Tritt

(XL250rc-B,CM,DK,DM,E.)
(ED,F1,F2,IT,SA,SD,SW,U)

Pedal • Brazo de arranque de pie •

Estribo

(XL250rc-B,CM,DK,DM,E.)
(ED,F1,F2,IT,SA,SD,SW,U)



BKB7-16A

Service item	F.R.T.	Ref. No.	Part No.	Description	Reqd. No. XL250					Serial No.	Area code
					S	Sz	SA	Ss	Rc		
PEDAL, GEAR CHANGE	0.1	1	24700-KB7-000	PEDAL, GEAR CHANGE					1		B,CM,DK,DM,E,ED,F1,F2 IT,SA,SD,SW,U
ARM ASSY., KICK STARTER		2	24781-419-000	RUBBER, GEAR CHANGE PEDAL					1		B,CM,DK,DM,E,ED,F1,F2 IT,SA,SD,SW,U
SPRING, BRAKE PEDAL		3	28241-428-871	JOINT, KICK ARM					1		B,CM,DK,DM,E,ED,F1,F2 IT,SA,SD,SW,U
SPRING, SIDE STAND		4	28300-428-871	ARM ASSY., KICK STARTER					1		B,CM,DK,DM,E,ED,F1,F2 IT,SA,SD,SW,U
ARM ASSY., STEP	0.2	5	28333-300-000	SPRING, KICK STARTER STOPPER					1		B,CM,DK,DM,E,ED,F1,F2 IT,SA,SD,SW,U
INC. RELATIVE PART		6	35350-KB7-000	SWITCH ASSY., RR. STOP					1		B,CM,DK,DM,E,ED,F1,F2 IT,SA,SD,SW,U
SWITCH ASSY., RR. STOP		7	35357-KB7-000	SPRING, STOP SWITCH					1		B,CM,DK,DM,E,ED,F1,F2 IT,SA,SD,SW,U
ROD, RR. BRAKE		8	43451-KB7-000	ROD, RR. BRAKE					1		B,CM,DK,DM,E,ED,F1,F2 IT,SA,SD,SW,U
PEDAL COMP., BRAKE		9	43453-MC4-000	JOINT, BRAKE ARM					1		B,CM,DK,DM,E,ED,F1,F2 IT,SA,SD,SW,U
BAR, SIDE STAND		10	43459-434-000	NUT, BRAKE ADJUSTING					1		B,CM,DK,DM,E,ED,F1,F2 IT,SA,SD,SW,U

2-E1

F-18-2

Pedal • Kick starter arm • Step

(XL250Rc-B,CM,DK,DM,E.)
(ED,F1,F2,IT,SA,SD,SW,U)

Pédale • Bras de kick de démarrage •

Repose pieds

(XL250Rc-B,CM,DK,DM,E.)
(ED,F1,F2,IT,SA,SD,SW,U)

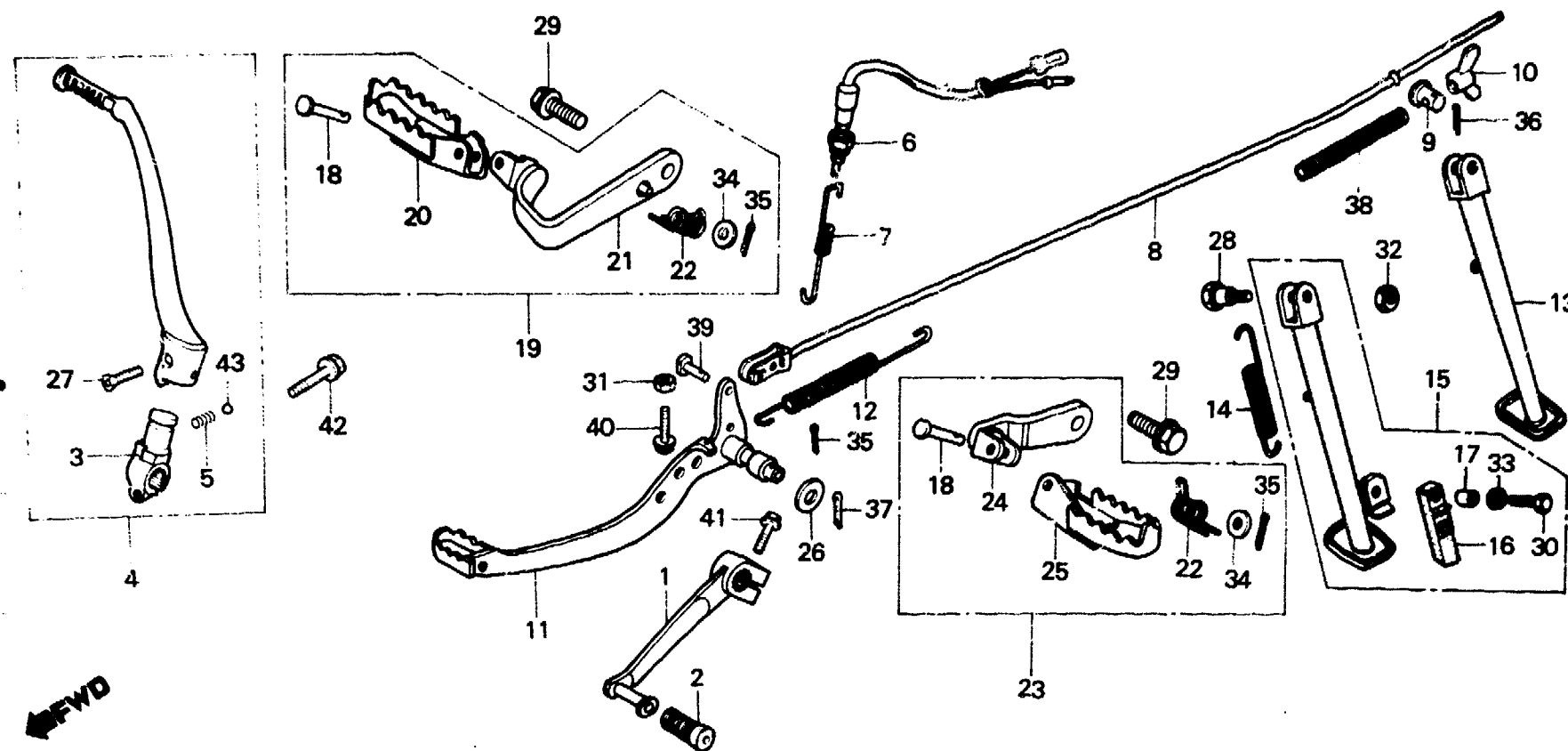
Pedal • Kickstarterarm • Tritt

(XL250Rc-B,CM,DK,DM,E.)
(ED,F1,F2,IT,SA,SD,SW,U)

Pedal • Brazo de arranque de pie •

Estribo

(XL250Rc-B,CM,DK,DM,E.)
(ED,F1,F2,IT,SA,SD,SW,U)



BKB7-16A

Service item	F.R.T.	Ref. No.	Part No.	Description	Reqd. No.					Serial No.	Area code
					S	Sz	SA	Sb	Rc		
		11	46510-KB7-000	PEDAL COMP., BRAKE					1		B,CM,DK,DM,E,ED,F1,F2 IT,SA,SD,SW,U
		12	46511-KB7-000	SPRING, BRAKE PEDAL					1		B,CM,DK,DM,E,ED,F1,F2 IT,SA,SD,SW,U
		13	50530-MC4-000	BAR, SIDE STAND					1		B,DK,DM,E,ED,F1,F2,IT SA,SD,SW,U
		14	50535-429-000	SPRING, SIDE STAND					1		B,CM,DK,DM,E,ED,F1,F2 IT,SA,SD,SW,U
		15	50540-MC4-670	BAR ASSY., SIDE STAND					1		CM
		16	50548-356-700	RUBBER, STAND					1		CM
		17	50549-356-700	COLLAR, STAND RUBBER SETTING					1		CM
		18	50603-033-000	PIN, STEP BAR JOINT					2		B,CM,DK,DM,E,ED,F1,F2 IT,SA,SD,SW,U
		19	50610-KB7-000	ARM ASSY., R. STEP					1		B,CM,DK,DM,E,ED,F1,F2 IT,SA,SD,SW,U
		20	50612-169-000	STEP COMP., R.					1		B,CM,DK,DM,E,ED,F1,F2 IT,SA,SD,SW,U

2-E2

F-18-2

Pedal • Kick starter arm • Step

(XL250Rc-B,CM,DK,DM,E.)
(ED,F1,F2,IT,SA,SD,SW,U)

Pédale • Bras de kick de démarrage •

Repose pieds

(XL250Rc-B,CM,DK,DM,E.)
(ED,F1,F2,IT,SA,SD,SW,U)

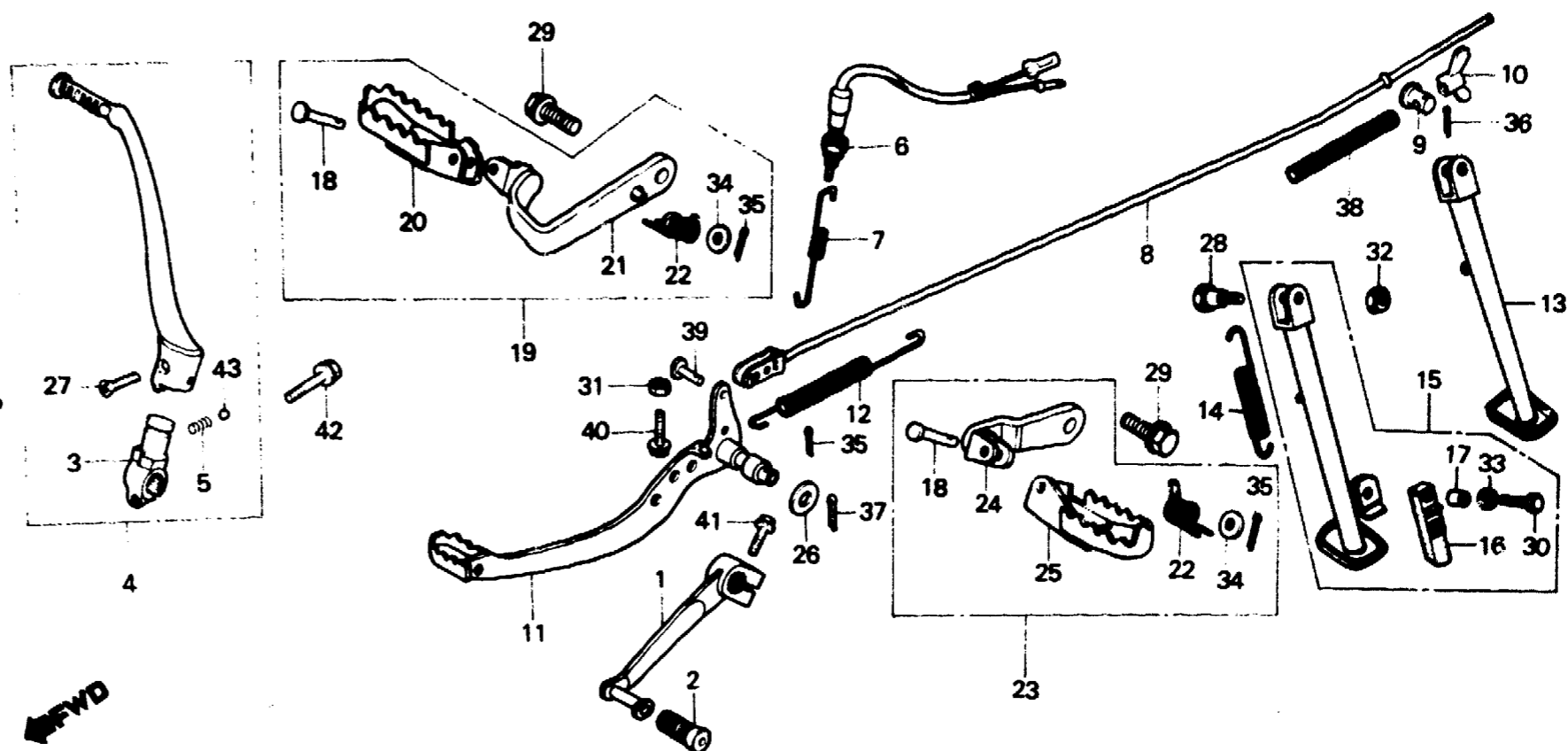
Pedal • Kickstarterarm • Tritt

(XL250Rc-B,CM,DK,DM,E.)
(ED,F1,F2,IT,SA,SD,SW,U)

Pedal • Brazo de arranque de pie •

Estribo

(XL250Rc-B,CM,DK,DM,E.)
(ED,F1,F2,IT,SA,SD,SW,U)



BKB7-16A

Service item	F.R.T.	Ref. No.	Part No.	Description	Reqd. No.					Serial No.	Area code
					S	Sz	SA	Se	Rc		
		21	50615-KB7-000	ARM COMP., R. STEP					1		B,CM,DK,DM,E,ED,F1,F2 IT,SA,SD,SW,U
		22	50617-MA0-770	SPRING, STEP RETURN					2		B,CM,DK,DM,E,ED,F1,F2 IT,SA,SD,SW,U
		23	50620-KB7-000	ARM ASSY., L. STEP					1		B,CM,DK,DM,E,ED,F1,F2 IT,SA,SD,SW,U
		24	50624-KB7-000	ARM COMP., L. STEP					1		B,CM,DK,DM,E,ED,F1,F2 IT,SA,SD,SW,U
		25	50642-169-000	STEP COMP., L.					1		B,CM,DK,DM,E,ED,F1,F2 IT,SA,SD,SW,U
		26	53312-657-000	BUSH, WASHER					1		B,CM,DK,DM,E,ED,F1,F2 IT,SA,SD,SW,U
		27	90101-329-000	BOLT, KICK ARM					1		B,CM,DK,DM,E,ED,F1,F2 IT,SA,SD,SW,U
		28	90108-283-000	SCREW, SIDE STAND PIVOT					1		B,CM,DK,DM,E,ED,F1,F2 IT,SA,SD,SW,U
		29	90130-429-000	BOLT, STEP SETTING					2		B,CM,DK,DM,E,ED,F1,F2 IT,SA,SD,SW,U
		30	92000-06028-0A	BOLT, HEX., 6X28					1		CM

2-E3

F-18-2

Pedal • Kick starter arm • Step

(XL250Rc-B,CM,DK,DM,E.)
(ED,F1,F2,IT,SA,SD,SW,U)

Pédale • Bras de kick de démarrage •

Repose pieds

(XL250Rc-B,CM,DK,DM,E.)
(ED,F1,F2,IT,SA,SD,SW,U)

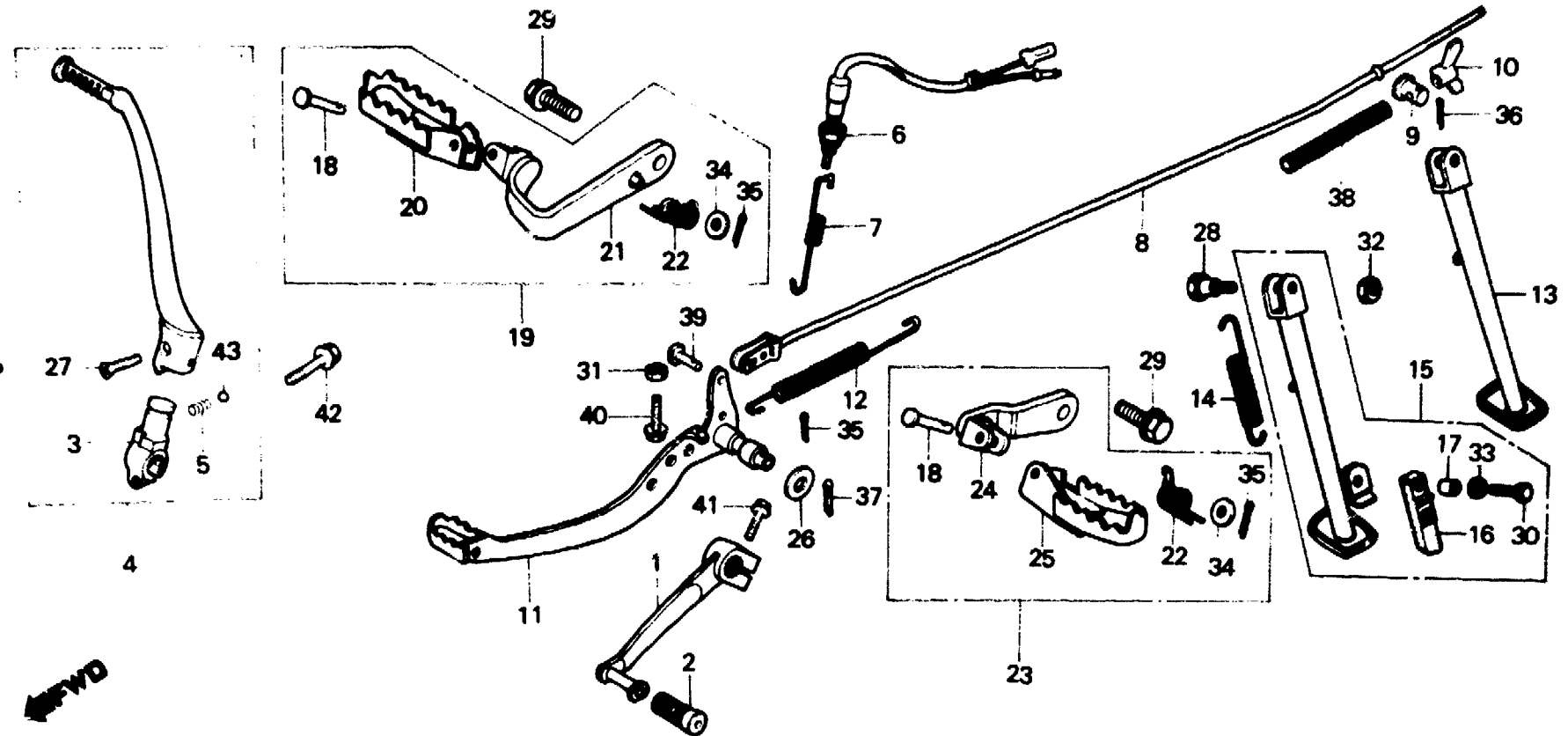
Pedal • Kickstarterarm • Tritt

(XL250Rc-B,CM,DK,DM,E.)
(ED,F1,F2,IT,SA,SD,SW,U)

Pedal • Brazo de arranque de pie •

Estribo

(XL250Rc-B,CM,DK,DM,E.)
(ED,F1,F2,IT,SA,SD,SW,U)



BKB7-16A

Service item	F.R.T.	Ref. No.	Part No.	Description	Reqd. No.				Serial No.	Area code
					S	Sz	SA	Sa		
		31	94001-06000	NUT, HEX., 6MM					1	B,CM,DK,DM,E,ED,F1,F2 IT,SA,SD,SW,U
		32	94031-10000	NUT, HEX., 10MM					1	B,CM,DK,DM,E,ED,F1,F2 IT,SA,SD,SW,U
		33	94101-06000	WASHER, PLAIN, 6MM					1	B,CM,DK,DM,E,ED,F1,F2 IT,SA,SD,SW,U
		34	94101-08000	WASHER, PLAIN, 8MM					2	CM B,CM,DK,DM,E,ED,F1,F2 IT,SA,SD,SW,U
		35	94201-16150	PIN, SPLIT, 1.6X15					3	B,CM,DK,DM,E,ED,F1,F2 IT,SA,SD,SW,U
		36	94201-20200	PIN, SPLIT, 2.0X20					1	B,CM,DK,DM,E,ED,F1,F2 IT,SA,SD,SW,U
		37	94201-30400	PIN, SPLIT, 3.0X40					1	B,CM,DK,DM,E,ED,F1,F2 IT,SA,SD,SW,U
		38	95014-73100	SPRING A, BRAKE ROD					1	B,CM,DK,DM,E,ED,F1,F2 IT,SA,SD,SW,U
		39	95015-52000	PIN B, BRAKE ROD JOINT					1	B,CM,DK,DM,E,ED,F1,F2 IT,SA,SD,SW,U
		40	95700-06016-00	BOLT, FLANGE, 6X16					1	B,CM,DK,DM,E,ED,F1,F2 IT,SA,SD,SW,U