

**N 7**

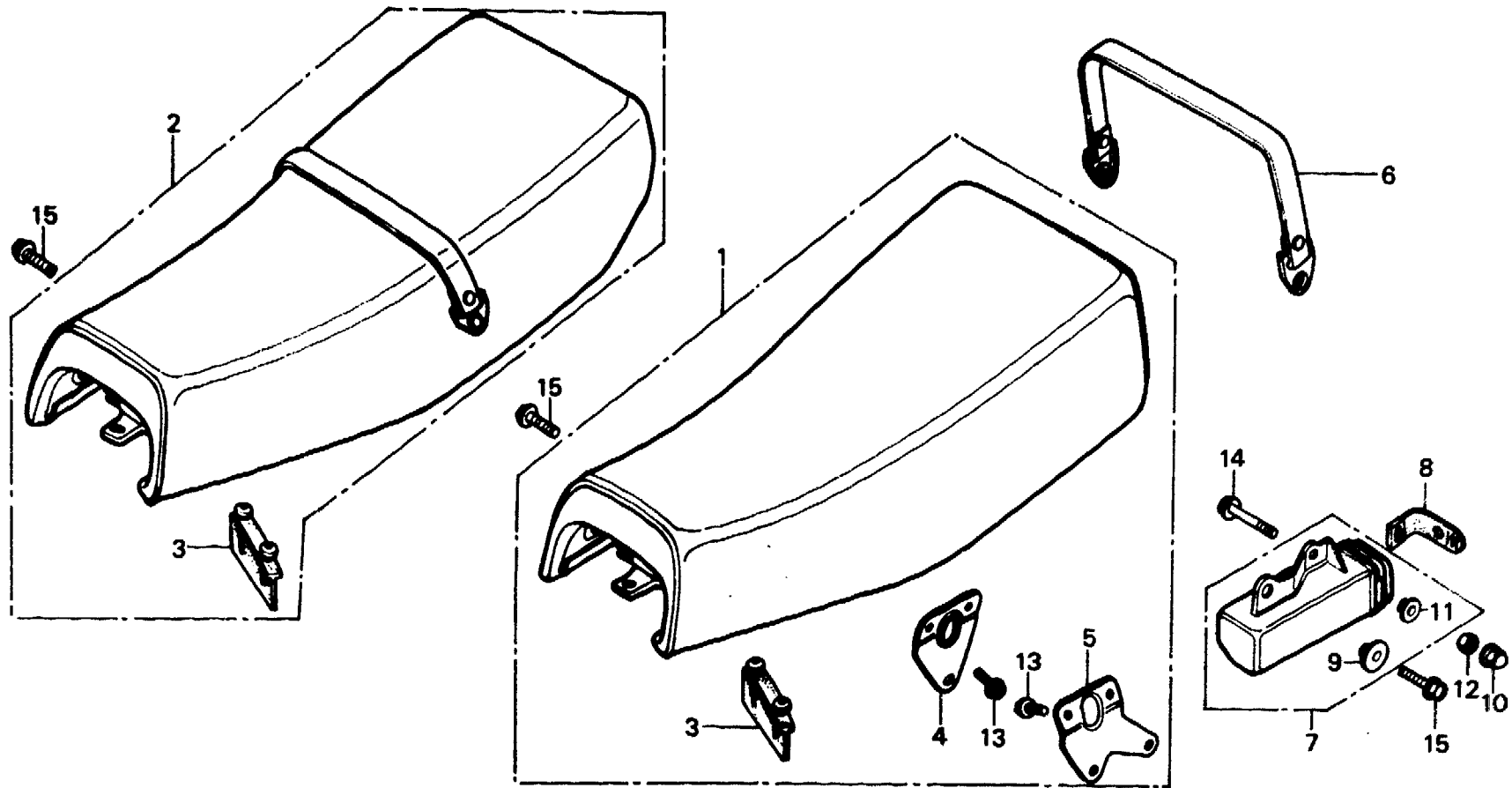
**F-14**

**Seat**  
(XL250S·SZ·SA·SB)

**Siege**  
(XL250S·SZ·SA·SB)

**Sitz**  
(XL250S·SZ·SA·SB)

**Asiento**  
(XL250S·SZ·SA·SB)



8428-45

Service item	F.R.T.	Ref. No.	Part No.	Description	Reqd. No.				Serial No.	Area code	
					S	Sz	SA	Sa Rc			
SEAT ASSY. BOX, TOOL	0.1	1	77200-428-000	SEAT ASSY.	1	1				CM,DK,DM,E,F,SA,U	
			77200-428-870	SEAT ASSY.			1	1			CM,DK,DM,E,F1,F2,SA,U
		2	77200-428-610	SEAT COMP.	1						ED,G,SW
			77200-428-920	SEAT ASSY.			1	1			B,ED,G1,G2,SD,SW
		3	77201-428-000	RUBBER, SEAT	1	1	1	1			
		4	77202-428-000	STAY A, R. SEAT SETTING	1	1	1	1			CM,DK,DM,E,F,F1,F2,SA,U
		5	77203-428-000	STAY A, L. SEAT SETTING	1	1	1	1			CM,DK,DM,E,F,F1,F2,SA,U
		6	77210-428-000	BELT COMP., SEAT	1	1					CM,DK,DM,E,F,SA,U
			77210-428-870	BELT COMP., SEAT			1	1		5202869	DK,DM,E,F1,F2,SA,U
							1	1		5202870	CM
							1	1	1		DK,DM,E,F1,F2,SA,U
							1	1	1		
					1	1	1				
					1	1	1				
					1	1	1				
					1	1	1				

1982.01.10

E

N7

**N 8**

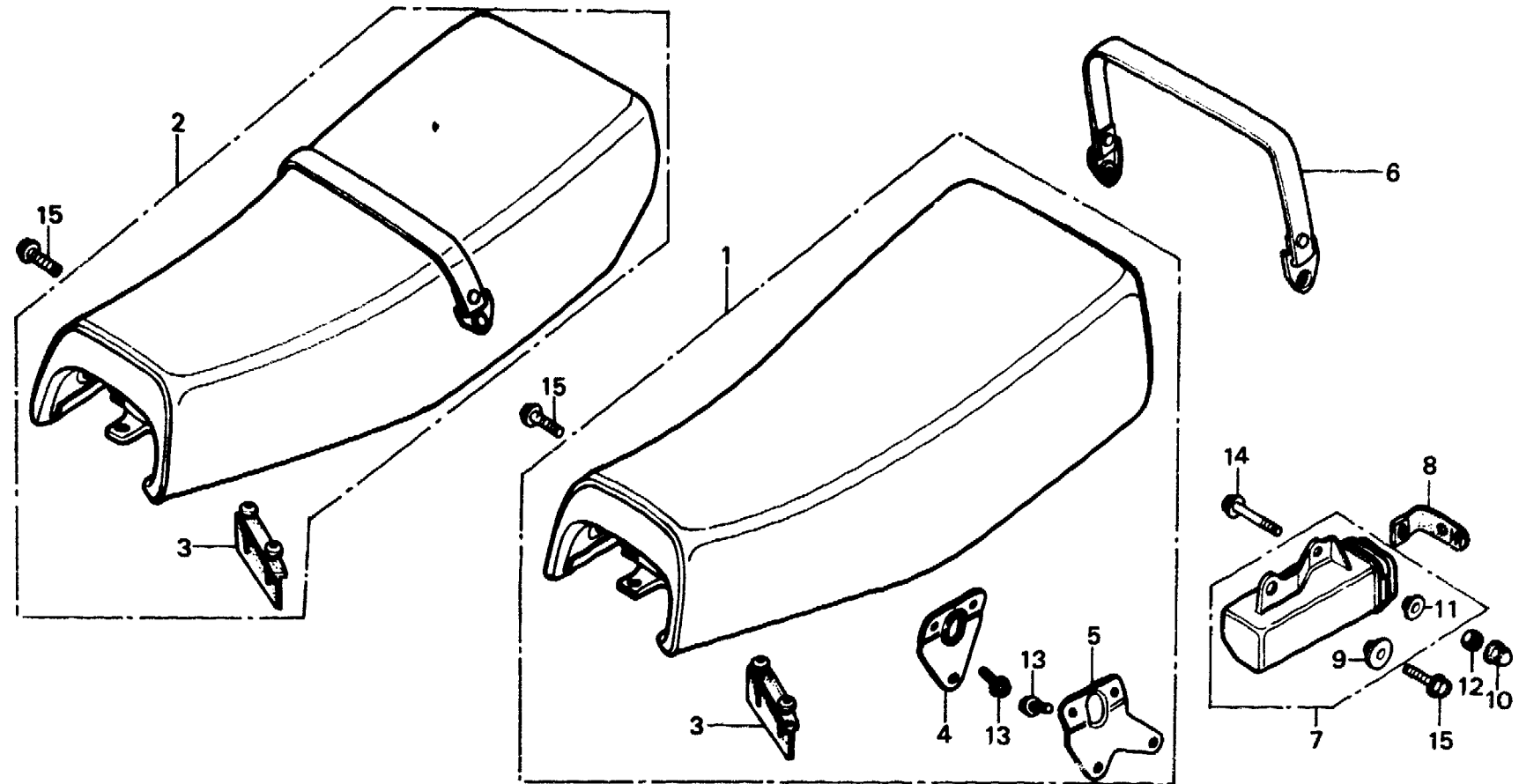
**F-14**

**Seat**  
(XL250S·SZ·SA·SB)

**Siege**  
(XL250S·SZ·SA·SB)

**Sitz**  
(XL250S·SZ·SA·SB)

**Asiento**  
(XL250S·SZ·SA·SB)



B428-45

Service item	F.R.T.	Ref. No.	Part No.	Description	Reqd. No.					Serial No.	Area code
					S	Sz	SA	Sb	Rc		
		13	95700-06010-08	BOLT, FLANGE, 6X10	4	4	4	4			
		14	95700-06020-00	BOLT, FLANGE, 6X20	1	1	1	1			
		15	95700-08020-00	BOLT, FLANGE, 8X20	2	2	2	2			

1982.01.10

E

N8

**N 9**

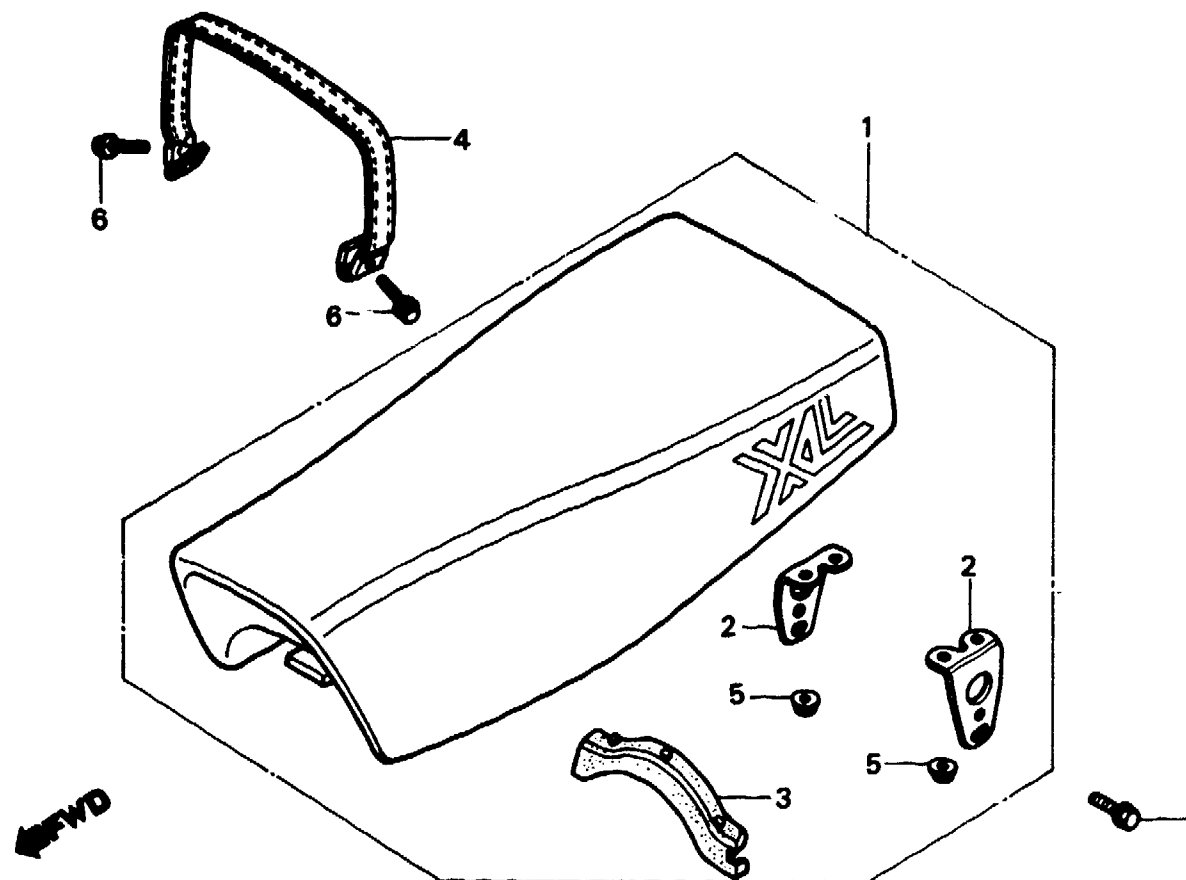
**F-14-1**

**Seat  
(XL250Rc)**

**Siege  
(XL250Rc)**

**Sitz  
(XL250Rc)**

**Asiento  
(XL250Rc)**



BKB7-12

Service item	F.R.T.	Ref. No.	Part No.	Description	Reqd. No.					Serial No.	Area code
					S	Sz	SA	Sb	Rc		
SEAT ASSY., DOUBLE INC. RELATIVE PART	0.1	1	77200-KB7-610	SEAT ASSY., DOUBLE					1		B,ED,G1,G2,IT,SD,SW
			77200-KB7-670	SEAT ASSY., DOUBLE					1		CM,DK,DM,E,F1,F2,SA,U
		2	77205-MC4-000	STAY, SEAT SETTING					2		
		3	77207-MC4-000	RUBBER, SEAL					1		
		4	77210-KB7-670	BELT COMP., SEAT					1		B,CM,DK,DM,E,ED,F1,F2 IT,SA,SD,SW,U
		5	94050-06080	NUT, FLANGE, 6MM					4		
		6	95700-06022-08	BOLT, FLANGE, 6X22					2		B,CM,DK,DM,E,ED,F1,F2 IT,SA,SD,SW,U
		7	95700-08016-00	BOLT, FLANGE, 8X16				2			

1982.01.10

E

N9

**N 10**

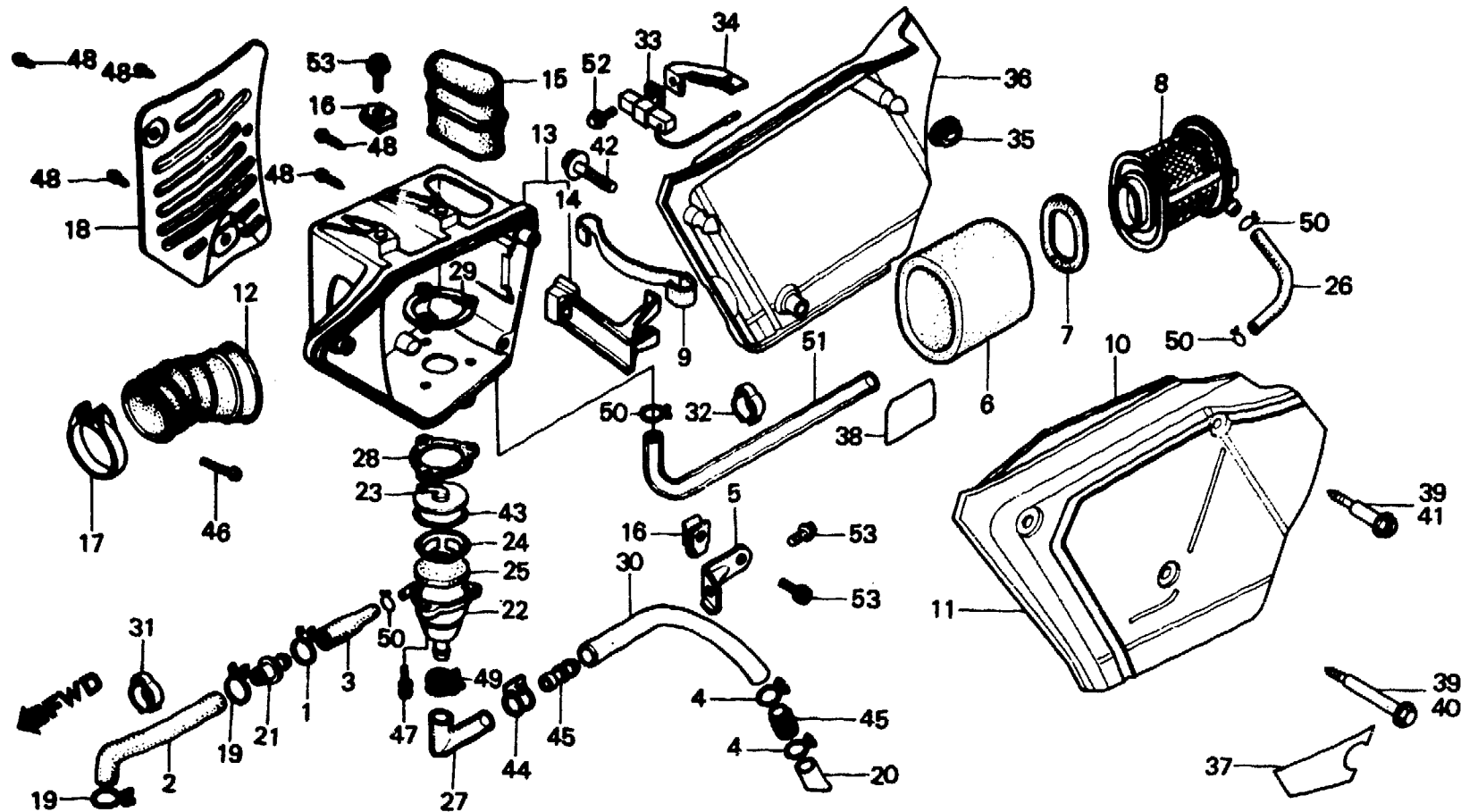
**F-15**

**Air cleaner  
(XL250S,Sz,SA,SB-CM,SW)**

**Filtre à air  
(XL250S,Sz,SA,SB-CM,SW)**

**Luftfilter  
(XL250S,Sz,SA,SB-CM,SW)**

**Limpiador de aire  
(XL250S,Sz,SA,SB-CM,SW)**



B428-29D

Service item	F.R.T.	Ref. No.	Part No.	Description	Reqd. No. XL250				Serial No.	Area code
					S	Sz	SA	SB		
ELEMENT, AIR CLEANER	0.2	1	15707-634-000	CLIP, OIL DRAIN	1	1				CM
RESISTOR ASSY.					1		1	1		SW
HOLDER, ELEMENT	0.1	2	15761-428-670	TUBE A, BREATHER	1	1				CM
COVER, AIR CLEANER CASE					1		1	1		SW
TUBE, AIR CLEANER IN.	0.4	3	15762-428-670	TUBE B, BREATHER	1	1				CM
TUBE, AIR CLEANER CONNECTING	0.4				1		1	1		SW
CASE, AIR CLEANER	0.7	4	15772-292-010	CLIP, BREATHER TUBE	2	2				CM
BODY, BREATHER SEPARATOR					2		2	2		SW
PROTECTOR, AIR CLEANER	0.5	5	17201-428-000	STAY, AIR CLEANER	1	1				CM
					1		1	1		SW
		6	17211-428-000	ELEMENT, AIR CLEANER	1	1				CM
					1		1	1		SW
		7	17213-428-300	RUBBER, ELEMENT SEAL	1	1				CM
					1		1	1		SW
		8	17214-428-000	HOLDER, ELEMENT	1	1				CM
					1		1	1		SW
		9	17217-385-000	SPRING, ELEMENT SETTING	1	1				CM
					1		1	1		SW
		10	17219-413-000	SEAL, AIR CLEANER COVER	1	1				CM
					1		1	1		SW

1982.01.10

E

N10

**N 11**

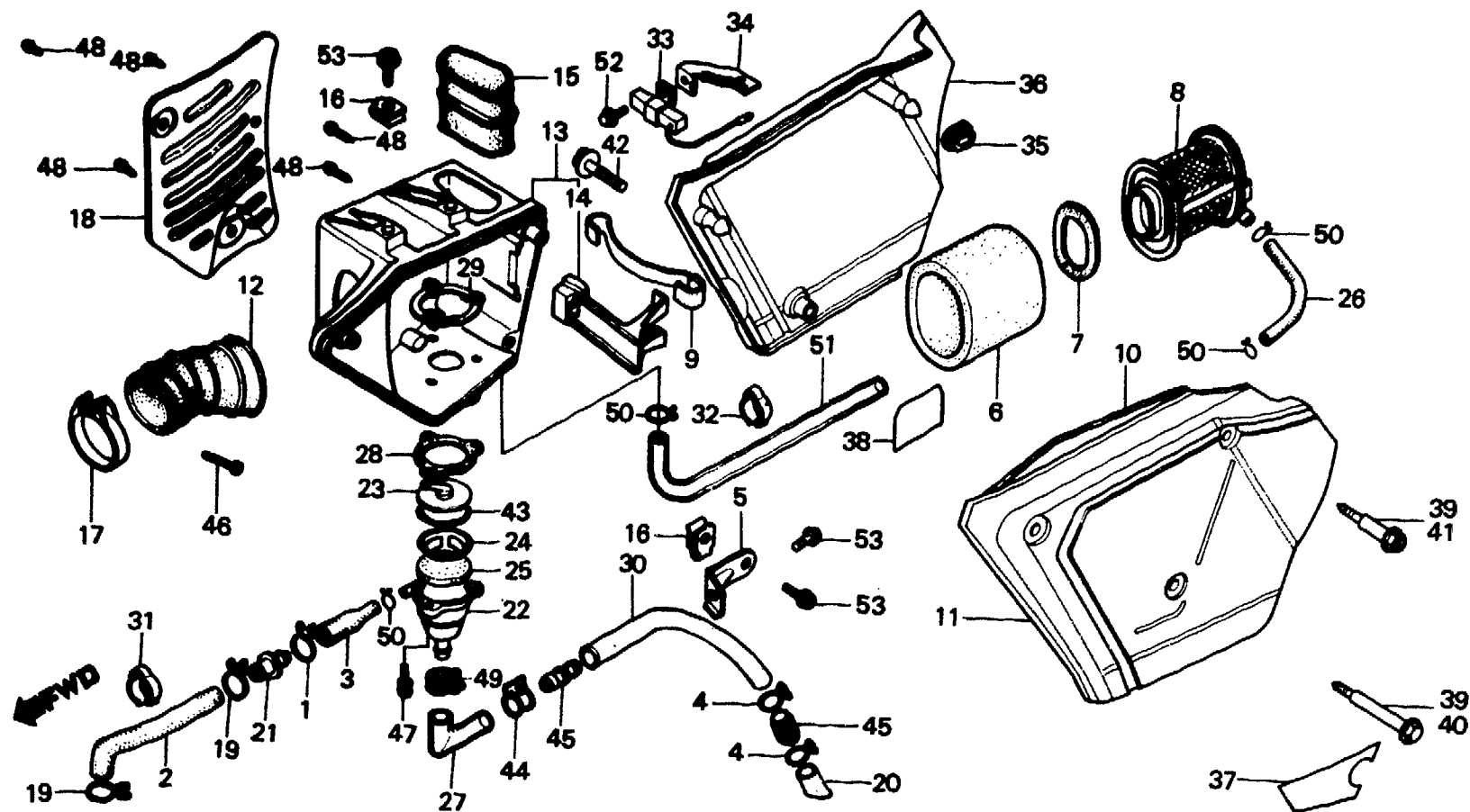
**F-15**

**Air cleaner  
(XL250S,Sz,SA,SB-CM,SW)**

**Filtre à air  
(XL250S,Sz,SA,SB-CM,SW)**

**Luftfilter  
(XL250S,Sz,SA,SB-CM,SW)**

**Limpiador de aire  
(XL250S,Sz,SA,SB-CM,SW)**



B428-29D

Service item	F.R.T.	Ref. No.	Part No.	Description	Reqd. No.				Serial No.	Area code
					S	Sz	SA	SB		
		11	17220-428-000ZA	COVER, AIR CLEANER CASE *R-23*	1	1				CM,SW
			17220-428-000ZB	COVER, AIR CLEANER CASE *PB-104*	1					CM,SW
			17220-428-000ZC	COVER, AIR CLEANER CASE *NH-24*	1					CM,SW
			17220-428-870ZB	COVER, AIR CLEANER CASE *R-23*			1			SW
			17220-428-870ZC	COVER, AIR CLEANER CASE *NH-24*			1			SW
			17220-428-870ZD	COVER, AIR CLEANER CASE *R-110*				1		SW
			17220-428-870ZE	COVER, AIR CLEANER CASE *NH-104M-U*				1		SW
			17220-428-870ZF	COVER, AIR CLEANER CASE *NH-111*				1		SW
		12	17222-428-000	TUBE, AIR CLEANER CONNECTING	1	1				CM
					1		1	1		SW
		13	17230-428-000	CASE, AIR CLEANER	1	1				CM
					1		1	1		SW

1982.01.10

E

N11

**N 12**

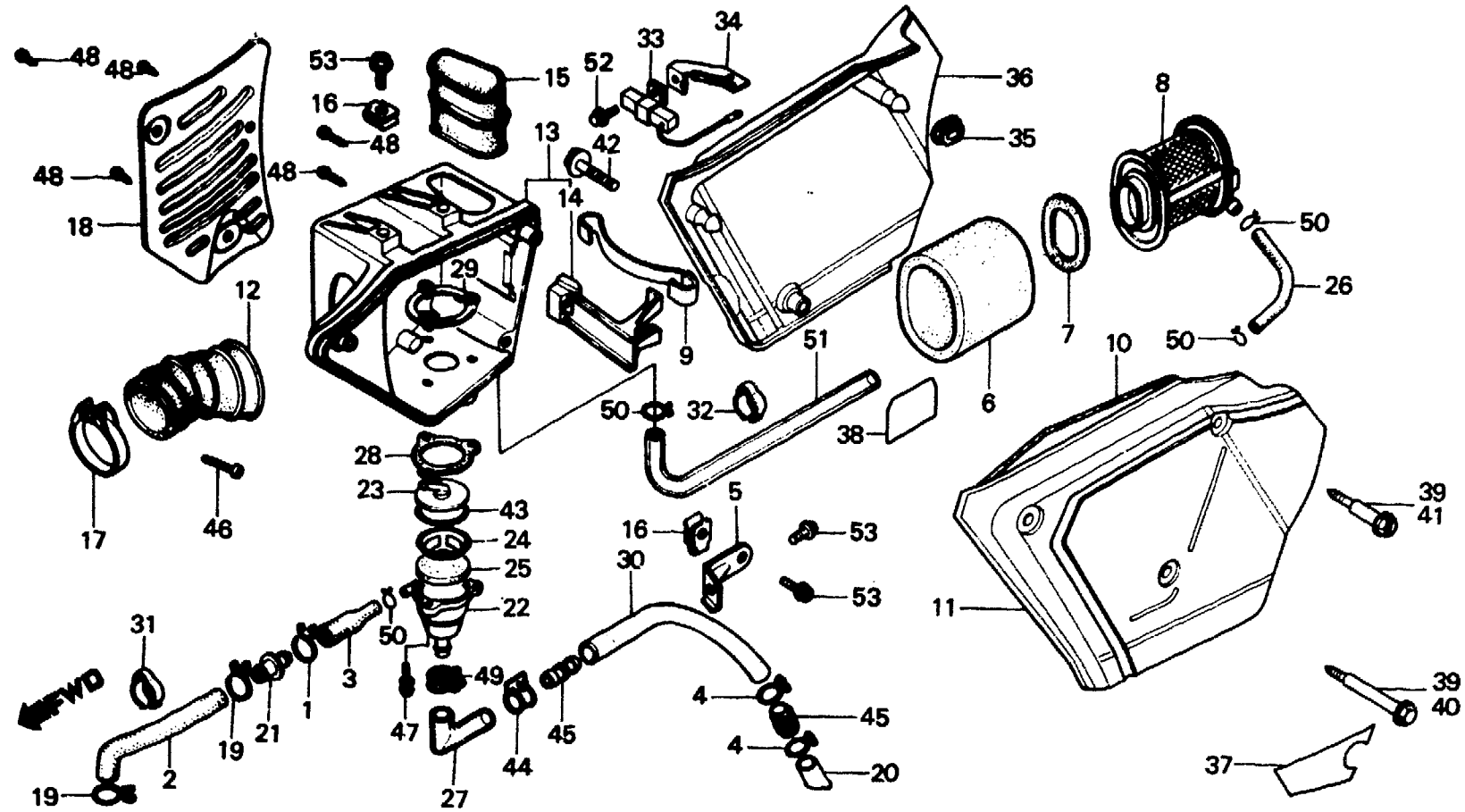
**F-15**

**Air cleaner  
(XL250S,Sz,SA,SB-CM,SW)**

**Filtre à air  
(XL250S,Sz,SA,SB-CM,SW)**

**Luftfilter  
(XL250S,Sz,SA,SB-CM,SW)**

**Limpiador de aire  
(XL250S,Sz,SA,SB-CM,SW)**



B428-29D

Service item	F.R.T.	Ref. No.	Part No.	Description	Reqd. No.					Serial No.	Area code
					S	Sz	SA	Sb	Rc		
		14	17231-428-300	HOLDER, SET SPRING	1	1					CM
		15	17240-428-000	TUBE, AIR CLEANER IN.	1	1	1	1			SW
		16	17254-428-000	NUT, AIR CLEANER SETTING	3	3					CM
		17	17255-329-000	BAND A, AIR CLEANER CONNECTING TUBE	1		3	3		5015895	CM,SW
			17252-428-000	BAND A, CONNECTING TUBE	1					5015896	CM,SW
		18	17260-428-000	PROTECTOR, AIR CLEANER	1	1	1	1			SW
		19	17316-611-000	CLIP, BREATHER TUBE	1	1	1	1			CM
		20	17358-381-000	TUBE, DRAIN	2	2					SW
					2	2	2	2			CM
		21	17359-428-000	JOINT, BREATHER TUBE	1	1					CM
					1	1	1	1			SW

1982.01.10

E

N12

**N 13**

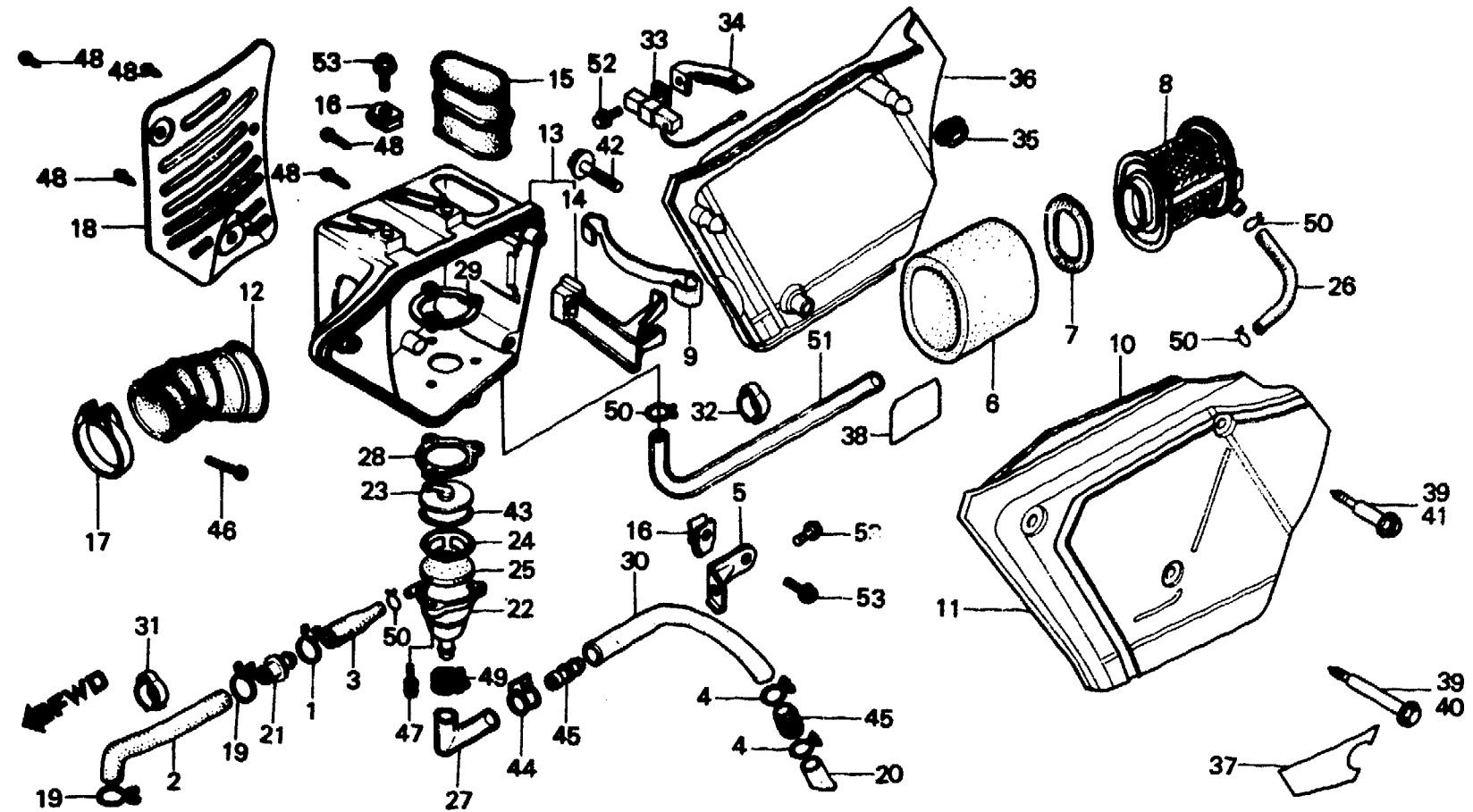
**F-15**

**Air cleaner  
(XL250S,Sz,SA,SB-CM,SW)**

**Filtre à air  
(XL250S,Sz,SA,SB-CM,SW)**

**Luftfilter  
(XL250S,Sz,SA,SB-CM,SW)**

**Limpiador de aire  
(XL250S,Sz,SA,SB-CM,SW)**



B428-29D

Service item	F.R.T.	Ref. No.	Part No.	Description	S	Reqd. No. XL250				Serial No.	Area code
						Sz	SA	Sa	Rc		
		22	17361-419-670	BODY, BREATHER SEPARATOR	1	1					CM
		23	17362-419-670	CAP, BREATHER SEPARATOR	1	1	1	1			SW
		24	17363-419-670	HOLDER, ELEMENT	1	1	1	1			CM
		25	17364-419-000	ELEMENT, CONDENSATION	1	1	1	1			SW
					1		1	1			CM
		26	17365-428-670	TUBE, BREATHER JOINT	1	1					SW
		27	17366-428-670	TUBE A, DRAIN	1	1	1	1			CM
		28	17367-428-000	RUBBER, BREATHER SEAL	1	1	1	1			SW
		29	17368-428-000	PLATE, SEPARATE BACK	1	1	1	1			CM
					1		1	1			SW
		30	17369-428-670	TUBE B, DRAIN	1	1	1	1			CM
					1		1	1			SW

**N 14**

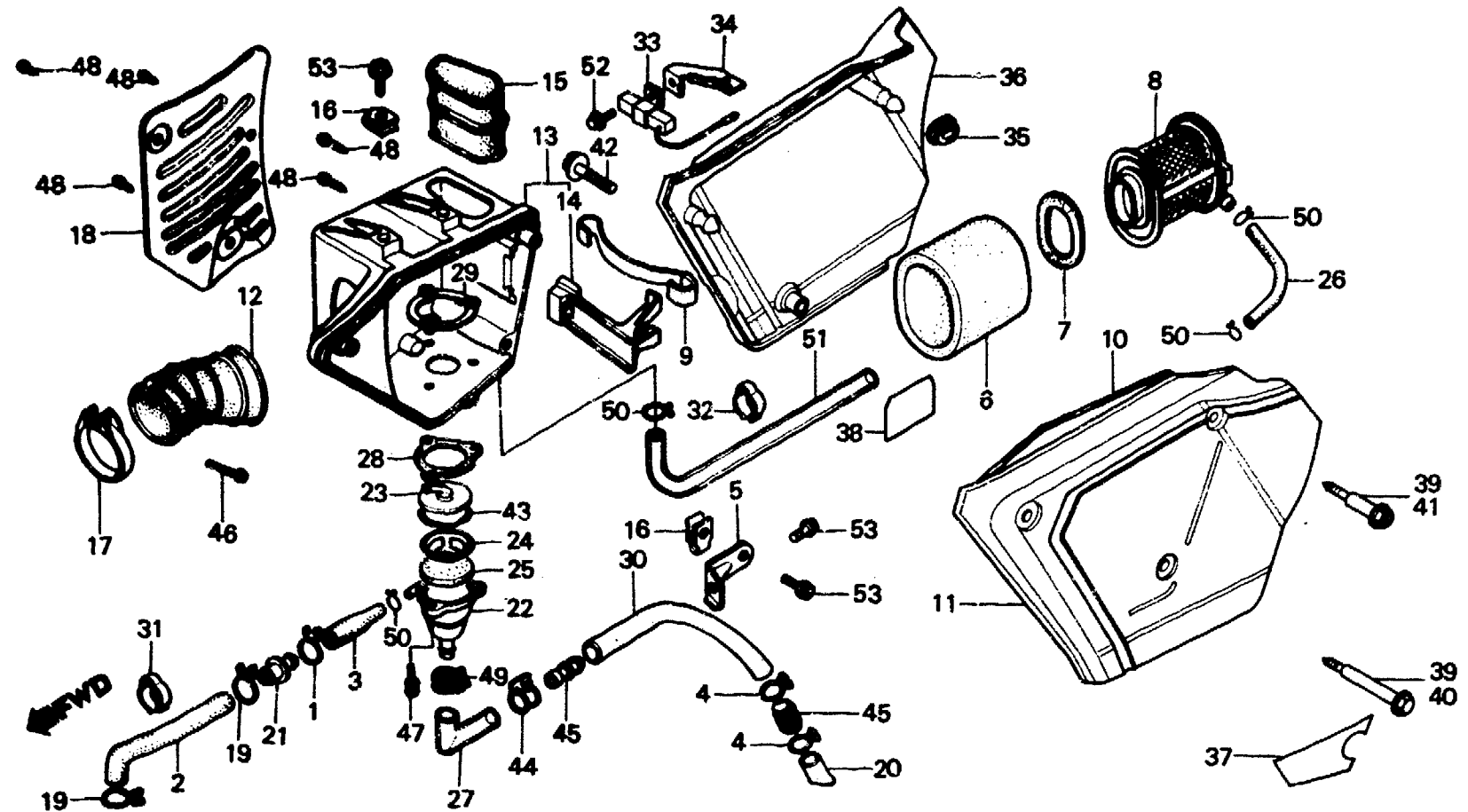
**F-15**

**Air cleaner  
(XL250S,Sz,SA,SB-CM,SW)**

**Filtre à air  
(XL250S,Sz,SA,SB-CM,SW)**

**Luftfilter  
(XL250S,Sz,SA,SB-CM,SW)**

**Limpiador de aire  
(XL250S,Sz,SA,SB-CM,SW)**



B428-29D

Service item	F.R.T.	Ref. No.	Part No.	Description	S	Reqd. No. XL250				Serial No.	Area code
						Sz	SA	SA	Rc		
		31	32975-428-000	CLIP, PULSER CORD	1	1					CM
					1		1	1			SW
		32	32976-428-000	CLIP, WIRE	1	1					CM
					1		1	1			SW
		33	35400-183-611	RESISTOR ASSY.							SW
		34	35401-428-830	STAY, RESISTOR							SW
		35	83551-300-000	GROMMET, AIR CLEANER CASE	3	3					CM
					3		3	3			SW
		36	83600-428-000ZA	COVER, R. SIDE *R-23*	1	1					CM,SW
			83600-428-000ZB	COVER, R. SIDE *PB-104*	1						CM,SW
			83600-428-000ZC	COVER, R. SIDE *NH-24*	1						CM,SW
			83600-428-870ZB	COVER, R. SIDE *R-23*				1			SW
			83600-428-870ZC	COVER, R. SIDE *NH-24*				1			SW
			83600-428-830ZA	COVER, R. SIDE *R-110*					1		SW
			83600-428-830ZB	COVER, R. SIDE *NH-104M-U*						1	SW
			83600-428-830ZC	COVER, R. SIDE *NH-111*						1	SW
		37	87507-428-620	MARK, AIR CLEANER CAUTION	1	1					CM



**N 15**

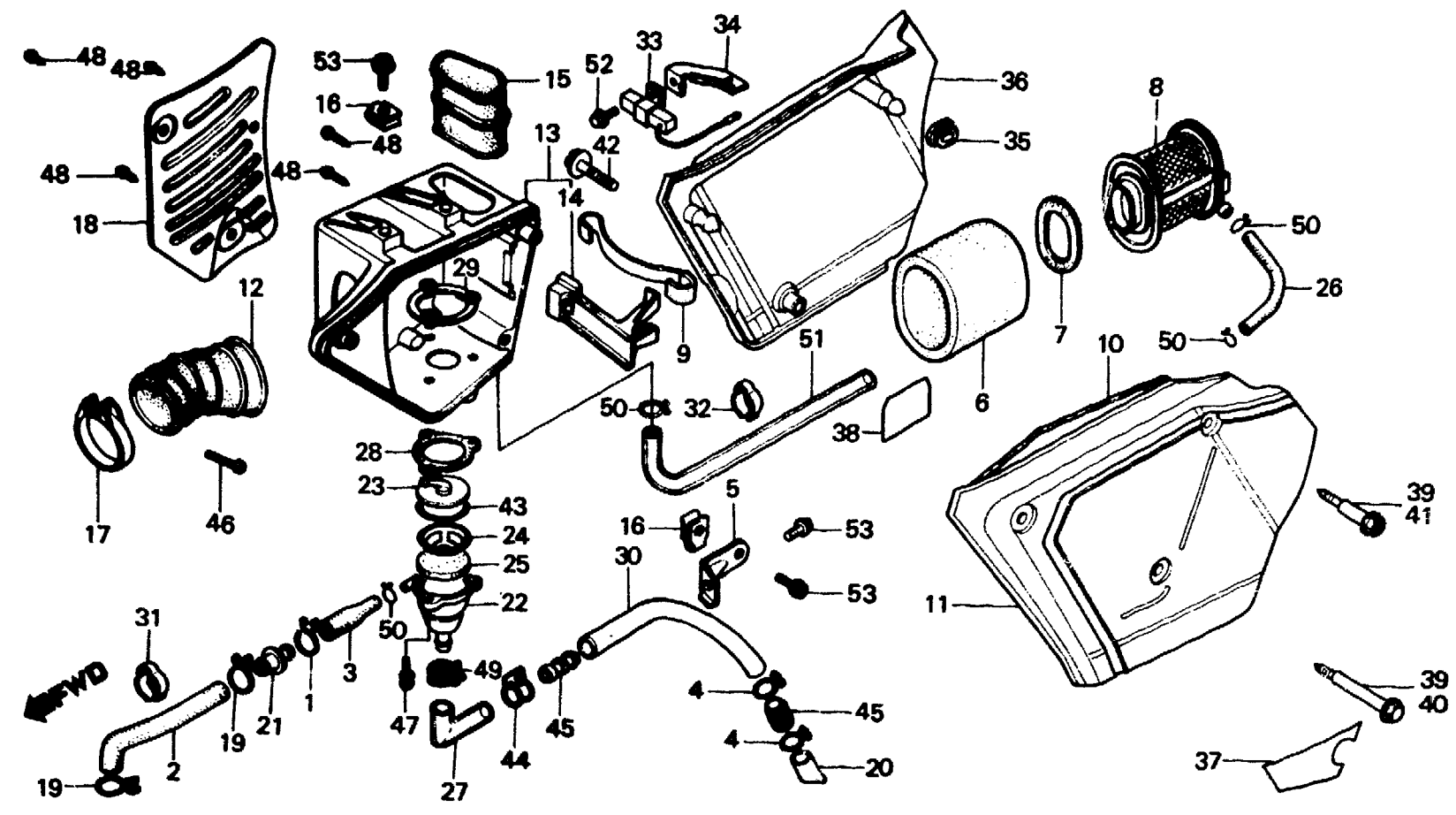
**F-15**

**Air cleaner  
(XL250S,Sz,SA,SB-CM,SW)**

**Filtre à air  
(XL250S,Sz,SA,SB-CM,SW)**

**Luftfilter  
(XL250S,Sz,SA,SB-CM,SW)**

**Limpiador de aire  
(XL250S,Sz,SA,SB-CM,SW)**



B428-29D

Service item	F.R.T.	Ref. No.	Part No.	Description	Reqd. No. XL250					Serial No.	Area code
					S	Sz	SA	SB	Rc		
			87507-428-670	MARK, AIR CLEANER CAUTION	1	1					CM,SW
			87507-435-670	MARK, AIR CLEANER CAUTION			1				SW
38			87508-120-000	LABEL, AIR CLEANER CAUTION				1			SW
39			90112-428-000	BOLT, AIR CLEANER CASE SETTING	3	3					CM,SW
40			90112-434-000	BOLT A, AIR CLEANER CASE SETTING			1	1			SW
41			90113-434-000	BOLT C, AIR CLEANER CASE SETTING			2	2			SW
42			90114-429-000	BOLT B, AIR CLEANER CASE SETTING			1	1			SW
43			91305-419-670	O-RING, 47X1.9	1	1					CM
44			91462-393-780	CLIP, TUBE	1	1	1	1			SW
44			91462-393-780	CLIP, TUBE	1	1					CM
45			91463-393-780	JOINT, TUBE	1	1	1	1			SW
45			91463-393-780	JOINT, TUBE	2	2					CM
45			91463-393-780	JOINT, TUBE	2	2	2	2			SW

**N 16**

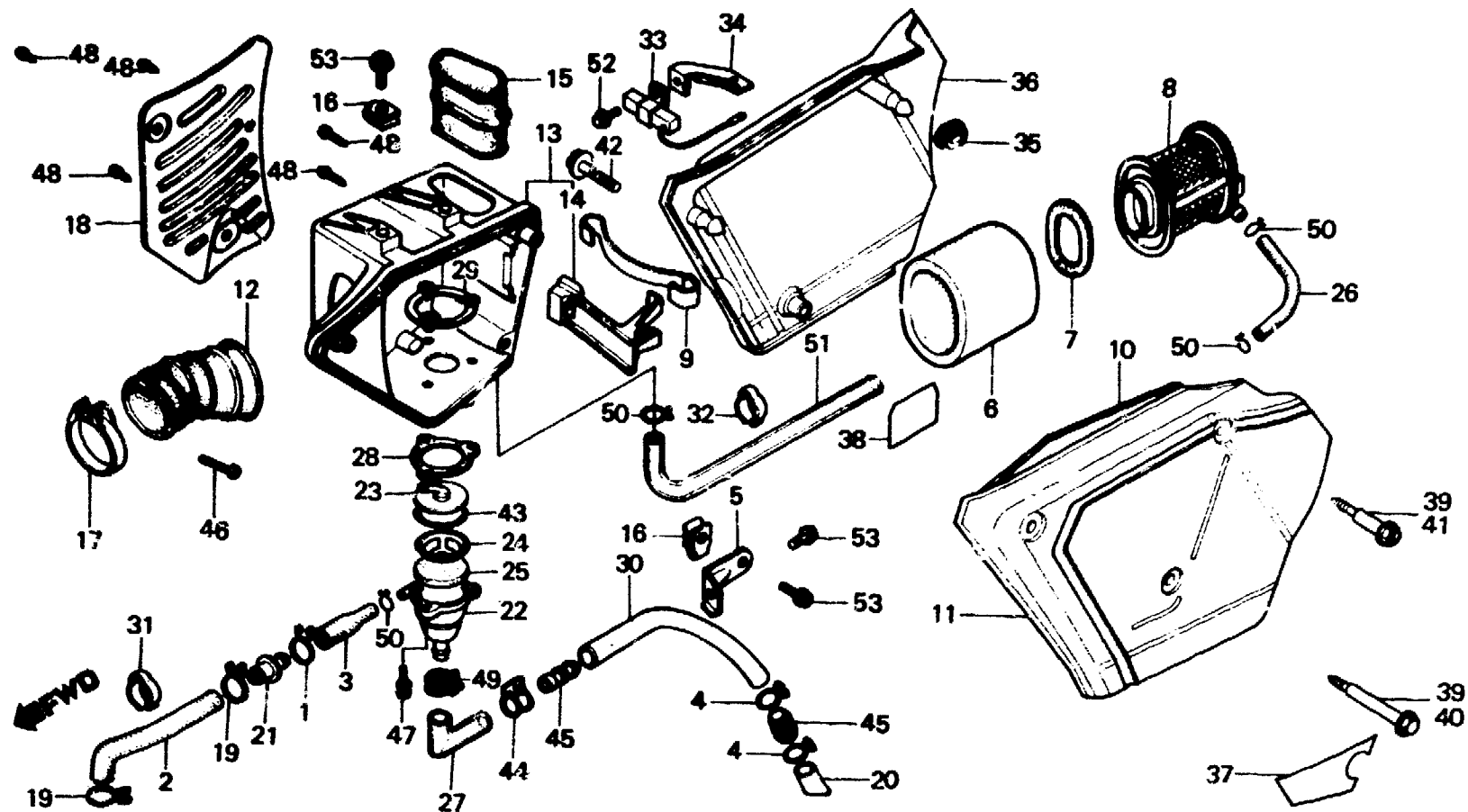
**F-15**

**Air cleaner  
(XL250S,Sz,SA,SB-CM,SW)**

**Filtre à air  
(XL250S,Sz,SA,SB-CM,SW)**

**Luftfilter  
(XL250S,Sz,SA,SB-CM,SW)**

**Limpiador de aire  
(XL250S,Sz,SA,SB-CM,SW)**

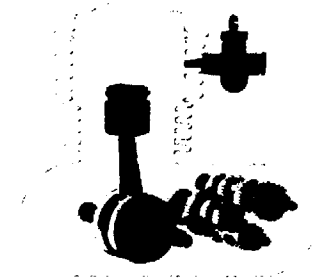
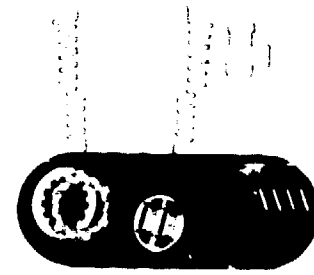


B428-29D

Service item	F.R.T.	Ref. No.	Part No.	Description	Reqd. No.					Serial No.	Area code
					S	Sz	SA	SB	Rc		
		46	93500-05025-06	SCREW, PAN, 5X25	1	1					CM
		47	93891-04020-08	SCREW-WASHER, 4X20	1		1	1			SW
		48	93901-34520	SCREW, TAPPING, 4X20	3	3					CM
		49	95002-02160	CLIP A16, TUBE	3		3	3			SW
		50	95002-02130	CLIP B12.5, TUBE	5	5					CM
					5		5	5			SW
		51	95003-23038-10	TUBE, VINYL, 8X12X380	1	1					CM
		52	95700-06010-00	BOLT, FLANGE, 6X10	1		1	1			SW
		53	95700-06012-00	BOLT, FLANGE, 6X12				1			SW
					4	4					CM
					4		4	4			SW

**2-B1**

# BLOCK INDEX - ENGINE GROUP

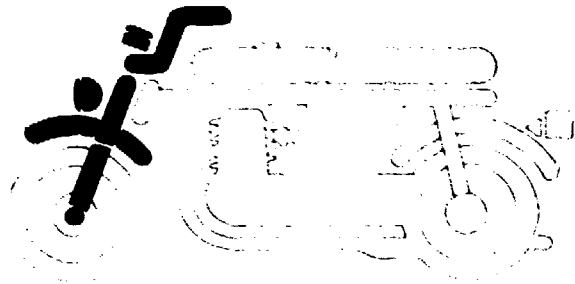


E- 1	Cylinder head cover .....	C 2
E- 2	Cylinder - Cylinder head .....	C 5
E- 3	Camshaft - Valve .....	C 11
E- 4	Cam chain - Tensioner .....	C 15

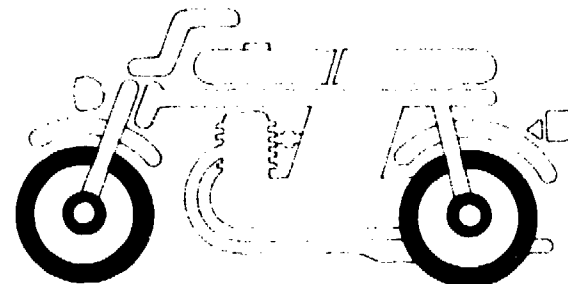
E- 5	Right crankcase cover .....	D 1
E- 6	Clutch - Spark advancer .....	D 4
E- 7	Oil pump .....	D 8
E- 8	Left crankcase cover - Generator .....	D 10
E- 9	Crankcase .....	D 16

E-10	Piston - Crank: aft .....	F 2
E-11	Balancer .....	F 6
E-12	Transmission .....	F 11
E-13	Gearshift drum .....	F 3
E-14	Kick starter spindle .....	F 10
E-15	Carburetor .....	F 13

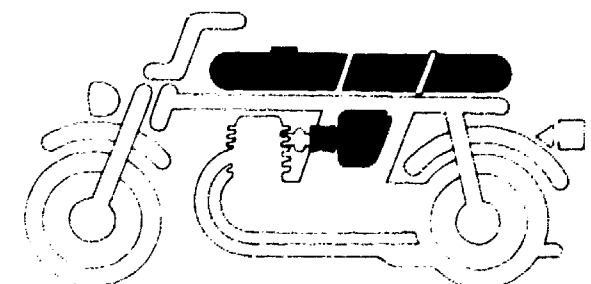
**BLOCK INDEX - FRAME GROUP**



- F- 1 Headlight..... H 2
- F- 2 Meter · Headlight stay ..... I 2
- F- 3 Handle lever · Switch ..... I 14
- F- 4 Handle pipe · Top bridge ..... J 8
- F- 5 Steering stem · Front fender ..... J 12
- F- 6 Front fender ..... K 9
- F- 7 Steering stem · Horn ..... K 11



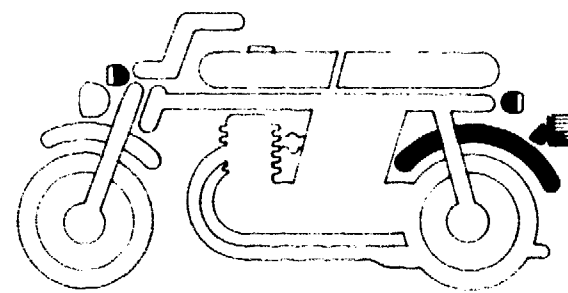
- F- 8 Front fork ..... K 13
- F- 9 Front wheel..... L 12
- F-10 Front brake panel ..... M 1
- F-11 Rear wheel..... M 5
- F-12 Rear brake panel ..... M13



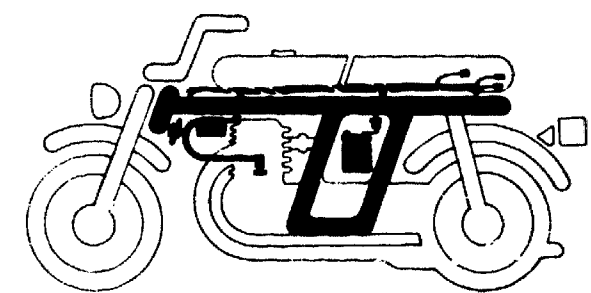
- F-13 Fuel tank ..... N 1
- F-14 Seat ..... N 7
- F-15 Air cleaner ..... N 10
- F-16 Side cover ..... 2-C 16



- F-17 Exhaust muffler..... 2-D 2
- F-18 Pedal · Kick starter arm · Step ..... 2-D 7
- F-19 Rear fork · Chain case..... 2-E 9
- F-20 Rear cushion..... 2-F 5



- F-21 Rear fender ..... 2-F 11
- F-22 Winker..... 2-G 6
- F-23 Taillight..... 2-H 11



- F-24 Wire harness · Battery ..... 2-I 6
- F-25 Battery ..... 2-I 14
- F-26 Frame body ..... 2-I 15
- F-27 Tool ..... 2-J 8
- F-28 Stripe · Emblem..... 2-J 11

**2-C1**

**F-15-1**

**Air cleaner**

(XL250S, SA, SB-B, DK, DM, E, ED, F, F1, F2, G, G1, G2, SA, SD, U)

**Filtre à air**

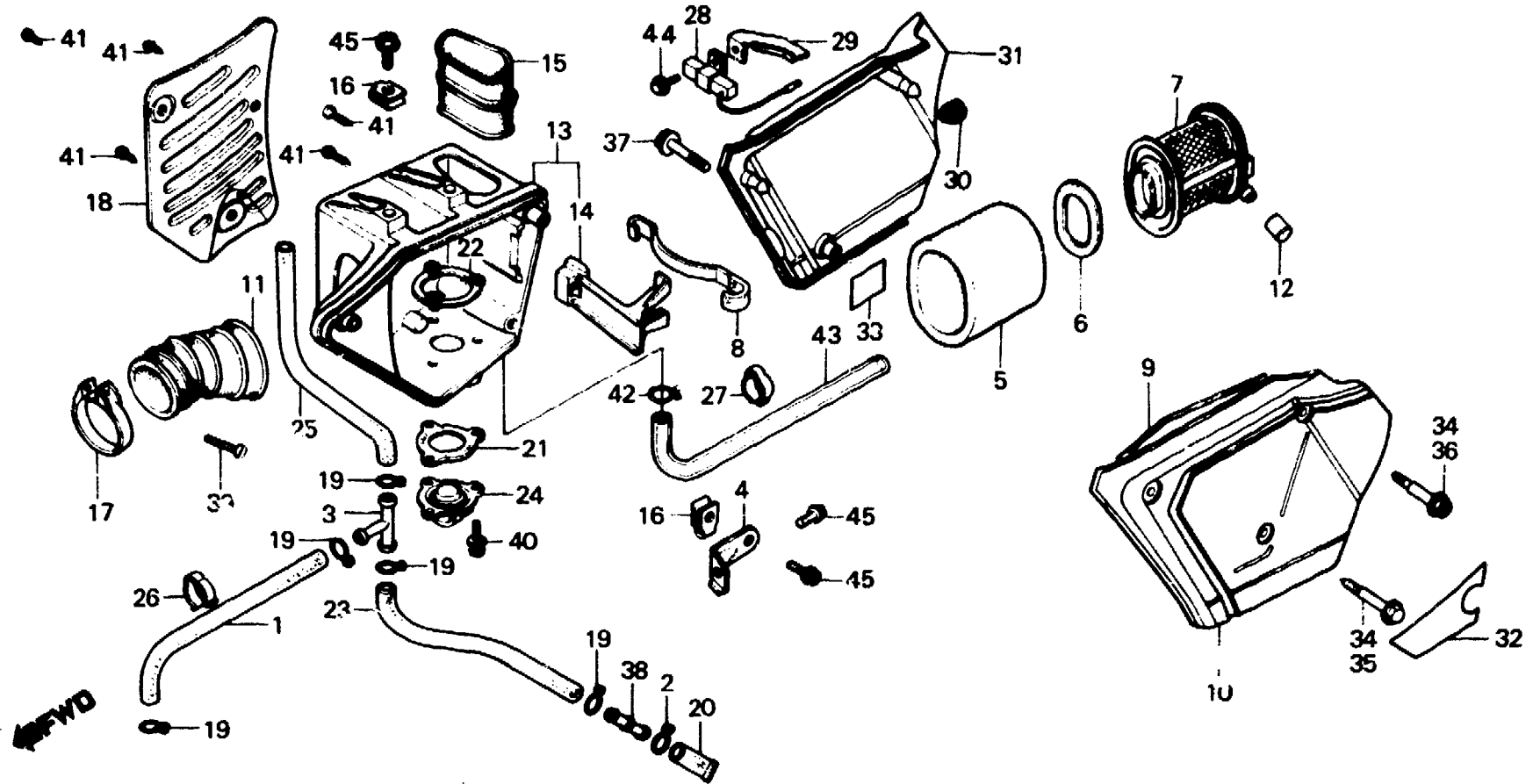
(XL250S, SA, SB-B, DK, DM, E, ED, F, F1, F2, G, G1, G2, SA, SD, U)

**Luftfilter**

(XL250S, SA, SB-B, DK, DM, E, ED, F, F1, F2, G, G1, G2, SA, SD, U)

**Limpiador de aire**

(XL250S, SA, SB-B, DK, DM, E, ED, F, F1, F2, G, G1, G2, SA, SD, U)



B428-46C

Service item	F.R.T.	Ref. No.	Part No.	Description	Reqd. No.				Serial No.	Area code
					S	Sz	SA	SB		
ELEMENT, AIR CLEANER RESISTOR ASSY.	0.2	1	15761-428-000	TUBE, BREATHER	1		1	1		B, DK, DM, E, ED, F, F1, F2 G, G1, G2, SA, SD, U
HOLDER, ELEMENT	0.1	2	15772-292-010	CLIP, BREATHER TUBE	1		1	1		B, DK, DM, E, ED, F, F1, F2 G, G1, G2, SA, SD, U
COVER, AIR CLEANER CASE		3	15772-376-000	JOINT, BREATHER THREE WAY	1		1	1		B, DK, DM, E, ED, F, F1, F2 G, G1, G2, SA, SD, U
TUBE, AIR CLEANER IN.	0.4	4	17201-428-000	STAY, AIR CLEANER	1		1	1		B, DK, DM, E, ED, F, F1, F2 G, G1, G2, SA, SD, U
TUBE, AIR CLEANER CONNECTING	0.6	5	17211-428-000	ELEMENT, AIR CLEANER	1		1	1		B, DK, DM, E, ED, F, F1, F2 G, G1, G2, SA, SD, U
CASE, AIR CLEANER	0.5	6	17213-428-300	RUBBER, ELEMENT SEAL	1		1	1		B, DK, DM, E, ED, F, F1, F2 G, G1, G2, SA, SD, U
PROTECTOR, AIR CLEANER		7	17214-428-000	HOLDER, ELEMENT	1		1	1		B, DK, DM, E, ED, F, F1, F2 G, G1, G2, SA, SD, U
		8	17217-385-000	SPRING, ELEMENT SETTING	1		1	1		B, DK, DM, E, ED, F, F1, F2 G, G1, G2, SA, SD, U
		9	17219-413-000	SEAL, AIR CLEANER COVER	1		1	1		B, DK, DM, E, ED, F, F1, F2 G, G1, G2, SA, SD, U
		10	17220-428-000ZA	COVER, AIR CLEANER CASE *R-23	1					B, DK, DM, E, ED, F, F1, F2 G, G1, G2, SA, SD, U

**2-C2**

**F-15-1**

**Air cleaner**

(XL250S, SA, Sb-B, DK, DM, E, ED, F, F1, F2, G, G1, G2, SA, SD, U)

**Filtre à air**

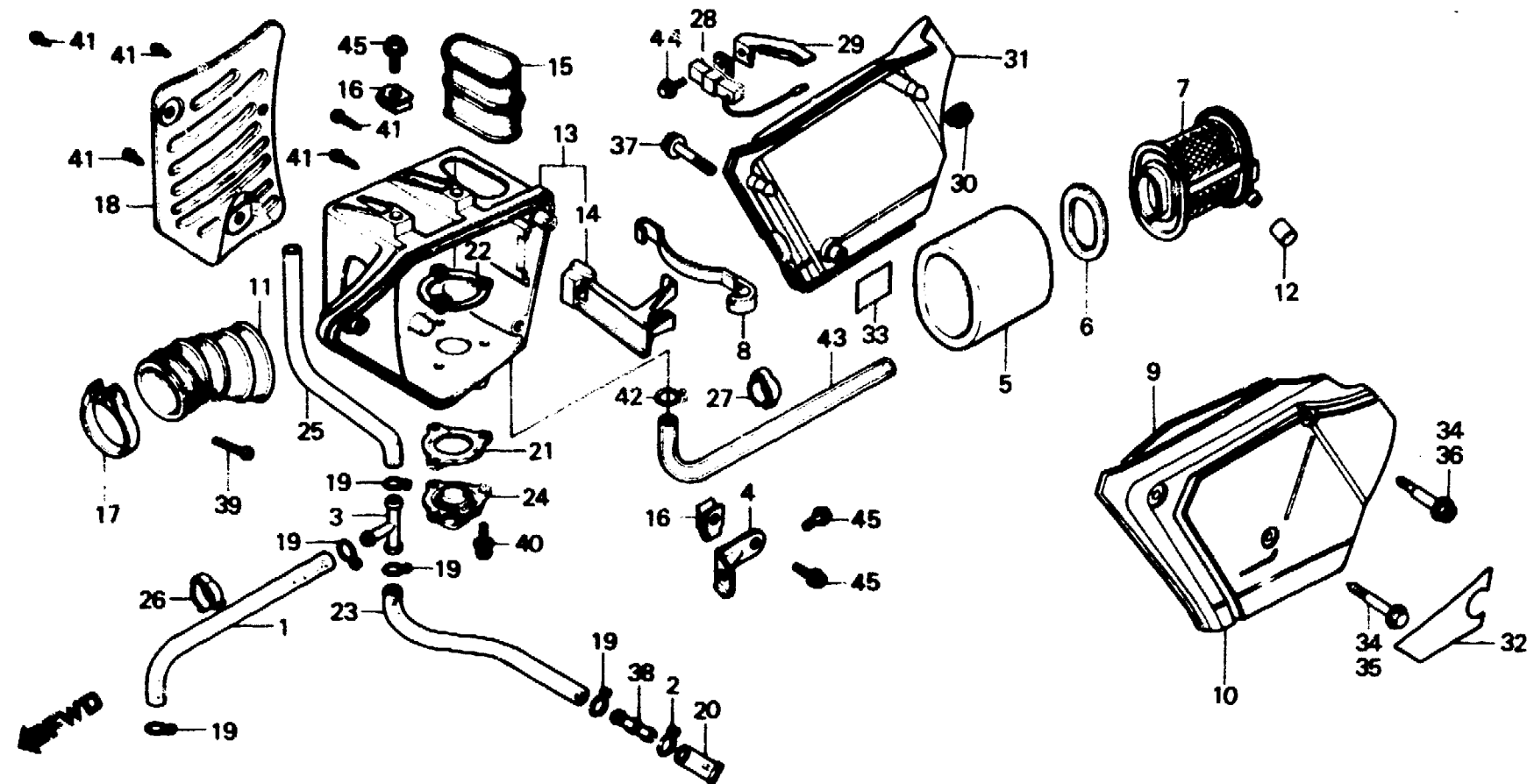
(XL250S, SA, Sb-B, DK, DM, E, ED, F, F1, F2, G, G1, G2, SA, SD, U)

**Luftfilter**

(XL250S, SA, Sb-B, DK, DM, E, ED, F, F1, F2, G, G1, G2, SA, SD, U)

**Limpiador de aire**

(XL250S, SA, Sb-B, DK, DM, E, ED, F, F1, F2, G, G1, G2, SA, SD, U)



B423-46C

Service item	F.R.T.	Ref. No.	Part No.	Description	Reqd No. XL250					Serial No.	Area code
					S	Sz	SA	Sb	Rc		
			17220-428-000Z <sup>A</sup>	COVER, AIR CLEANER CASE *PB-104*	1						DK, DM, E, ED, F, G, SA, U
			17220-428-000Z <sup>C</sup>	COVER, AIR CLEANER CASE *NH-24*	1						DK, DM, E, ED, F, G, SA, U
			17220-428-870Z <sup>B</sup>	COVER, AIR CLEANER CASE *R-23*			1				B, DK, DM, E, ED, F1, F2, G1, G2, SA, SD, U
			17220-428-870Z <sup>C</sup>	COVER, AIR CLEANER CASE *NH-24*			1				B, DK, DM, E, ED, F1, F2, G1, G2, SA, SD, U
			17220-428-870Z <sup>D</sup>	COVER, AIR CLEANER CASE *R-110*				1			B, DK, DM, E, ED, F1, F2, G1, G2, SA, SD, U
			17220-428-870Z <sup>E</sup>	COVER, AIR CLEANER CASE *NH-104M-U*				1			B, DK, DM, E, ED, F1, F2, G1, G2, SA, SD, U
			17220-428-870Z <sup>F</sup>	COVER, AIR CLEANER CASE *NH-111*				1			B, DK, DM, E, ED, F1, F2, G1, G2, SA, SD, U
		11	17222-428-000	TUBE, AIR CLEANER CONNECTING	1	1	1				B, DK, DM, E, ED, F, F1, F2, G, G1, G2, SA, SD, U
		12	17227-428-000	CAP, ELEMENT PROOF	1	1	1				B, DK, DM, E, ED, F, F1, F2, G, G1, G2, SA, SD, U
		13	17230-428-000	CASE, AIR CLEANER	1	1	1				B, DK, DM, E, ED, F, F1, F2, G, G1, G2, SA, SD, U

**2-C3**

**F-15-1**

**Air cleaner**

(XL250S, SA, S<sub>B</sub>-B, DK, DM, E, ED, F, F1, F2, G, G1, G2, SA, SD, U)

**Filtere à air**

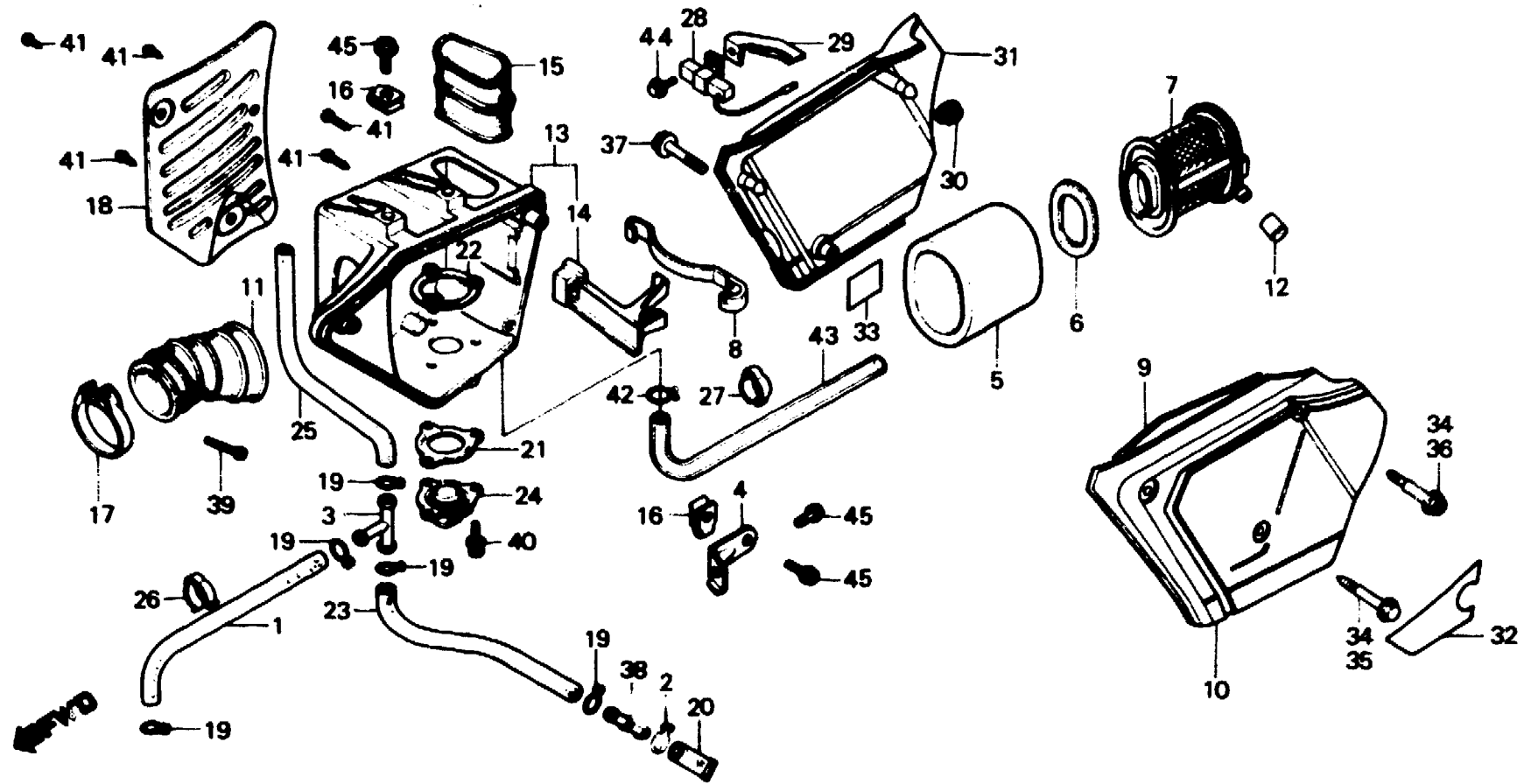
(XL250S, SA, S<sub>B</sub>-B, DK, DM, E, ED, F, F1, F2, G, G1, G2, SA, SD, U)

**Luftfilter**

(XL250S, SA, S<sub>B</sub>-B, DK, DM, E, ED, F, F1, F2, G, G1, G2, SA, SD, U)

**Limpiador de aire**

(XL250S, SA, S<sub>B</sub>-B, DK, DM, E, ED, F, F1, F2, G, G1, G2, SA, SD, U)



B428-46C

Service item	F.R.T.	Ref. No.	Part No.	Description	Reqd. No.				Serial No.	Area code
					S	Sz	SA	S <sub>B</sub>		
		14	17291-428-300	HOLDER, SET SPRING	1		1	1		B, DK, DM, E, ED, F, F1, F2, G, G1, G2, SA, SD, U
		15	17240-428-000	TUBE, AIR CLEANER IN.	1		1			B, DK, DM, E, ED, F, F1, F2, G, G1, G2, SA, SD, U
		16	17254-428-000	NUT, AIR CLEANER SETTING	3		3	3		B, DK, DM, E, ED, F, F1, F2, G, G1, G2, SA, SD, U
		17	17255-329-000	BAND A, AIR CLEANER CONNECTING TUBE	1				5015895	DK, DM, E, ED, F, G, SA, U
			17252-428-000	BAND A, CONNECTING TUBE	1				5015896	DK, DM, E, ED, F, G, SA, U
							1	1		B, DK, DM, E, ED, F1, F2, G1, G2, SA, SD, U
		18	17260-428-000	PROTECTOR, AIR CLEANER	1		1	1		B, DK, DM, E, ED, F, F1, F2, G, G1, G2, SA, SD, U
		19	17316-611-000	CLIP, BREATHER TUBE	5		5	5		B, DK, DM, E, ED, F, F1, F2, G, G1, G2, SA, SD, U
		20	17358-381-000	TUBE, DRAIN	1		1	1		B, DK, DM, E, ED, F, F1, F2, G, G1, G2, SA, SD, U
		21	17367-428-000	RUBBER, BREATHER SEAL	1		1	1		B, DK, DM, E, ED, F, F1, F2, G, G1, G2, SA, SD, U

**2-C4**

**F-15-1**

**Air cleaner**

(XL250S, SA, S<sub>B</sub>-B, DK, DM, E, ED, F, F1, F2, G, G1, G2, SA, SD, U)

**Filtre à air**

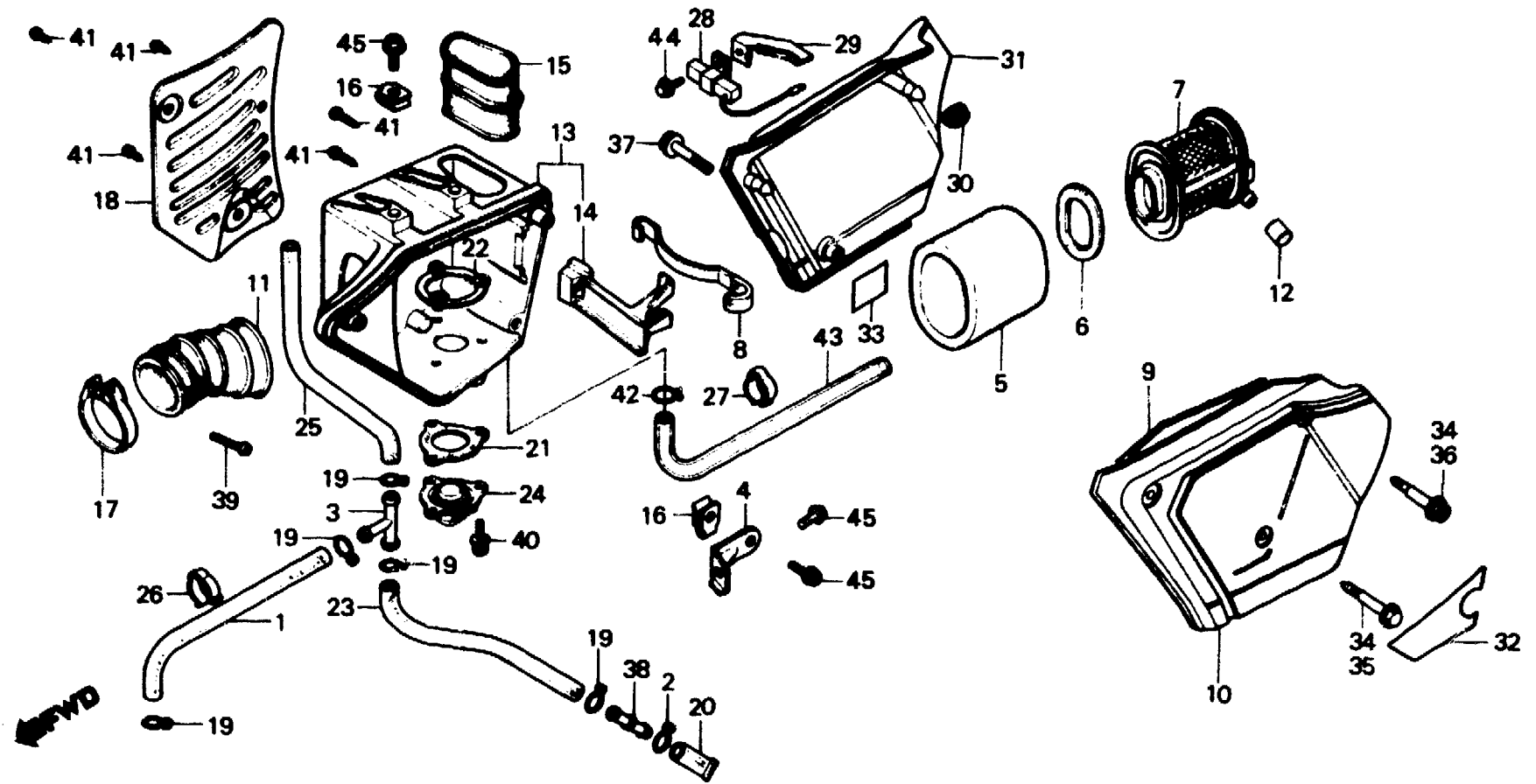
(XL250S, SA, S<sub>B</sub>-B, DK, DM, E, ED, F, F1, F2, G, G1, G2, SA, SD, U)

**Luftfilter**

(XL250S, SA, S<sub>B</sub>-B, DK, DM, E, ED, F, F1, F2, G, G1, G2, SA, SD, U)

**Limpiador de aire**

(XL250S, SA, S<sub>B</sub>-B, DK, DM, E, ED, F, F1, F2, G, G1, G2, SA, SD, U)



B428-46C

Service item	F.R.T.	Ref. No.	Part No.	Description	Reqd. No.				Serial No.	Area code
					S	Sz	SA	SA Rc		
		22	17368-428-000	PLATE, SEPARATE BACK	1		1			B, DK, DM, E, ED, F, F1, F2 G, G1, G2, SA, SD, U
		23	17369-428-000	TUBE B, DRAIN	1		1			B, DK, DM, E, ED, F, F1, F2 G, G1, G2, SA, SD, U
		24	17372-428-000	PLATE, BREATHER PROOF	1		1			B, DK, DM, E, ED, F, F1, F2 G, G1, G2, SA, SD, U
		25	17373-428-000	TUBE A, BREATHER	1		1			B, DK, DM, E, ED, F, F1, F2 G, G1, G2, SA, SD, U
		26	32975-428-000	CLIP, PULSER CORD	1		1			B, DK, DM, E, ED, F, F1, F2 G, G1, G2, SA, SD, U
		27	32976-428-000	CLIP, WIRE	1		1			B, DK, DM, E, ED, F, F1, F2 G, G1, G2, SA, SD, U
		28	35400-183-611	RESISTOR ASSY.				1		B, DK, DM, E, ED, F1, F2, G1 G2, SA, SD, U
		29	35401-428-830	STAY, RESISTOR				1		B, DK, DM, E, ED, F1, F2, G1 G2, SA, SD, U
		30	83551-300-000	GROMMET, AIR CLEANER CASE	4		2	2		B, DK, DM, E, ED, F, F1, F2 G, G1, G2, SA, SD, U
		31	83600-428-000ZA	COVER, R. SIDE *R-23*	1					DK, DM, E, ED, F, G, SA, U



**2-C5**

**F-15-1**

**Air cleaner**

(XL250S, SA, S<sub>B</sub>-B, DK, DM, E, ED, F, F1, F2, G, G1, G2, SA, SD, U)

**Filtre à air**

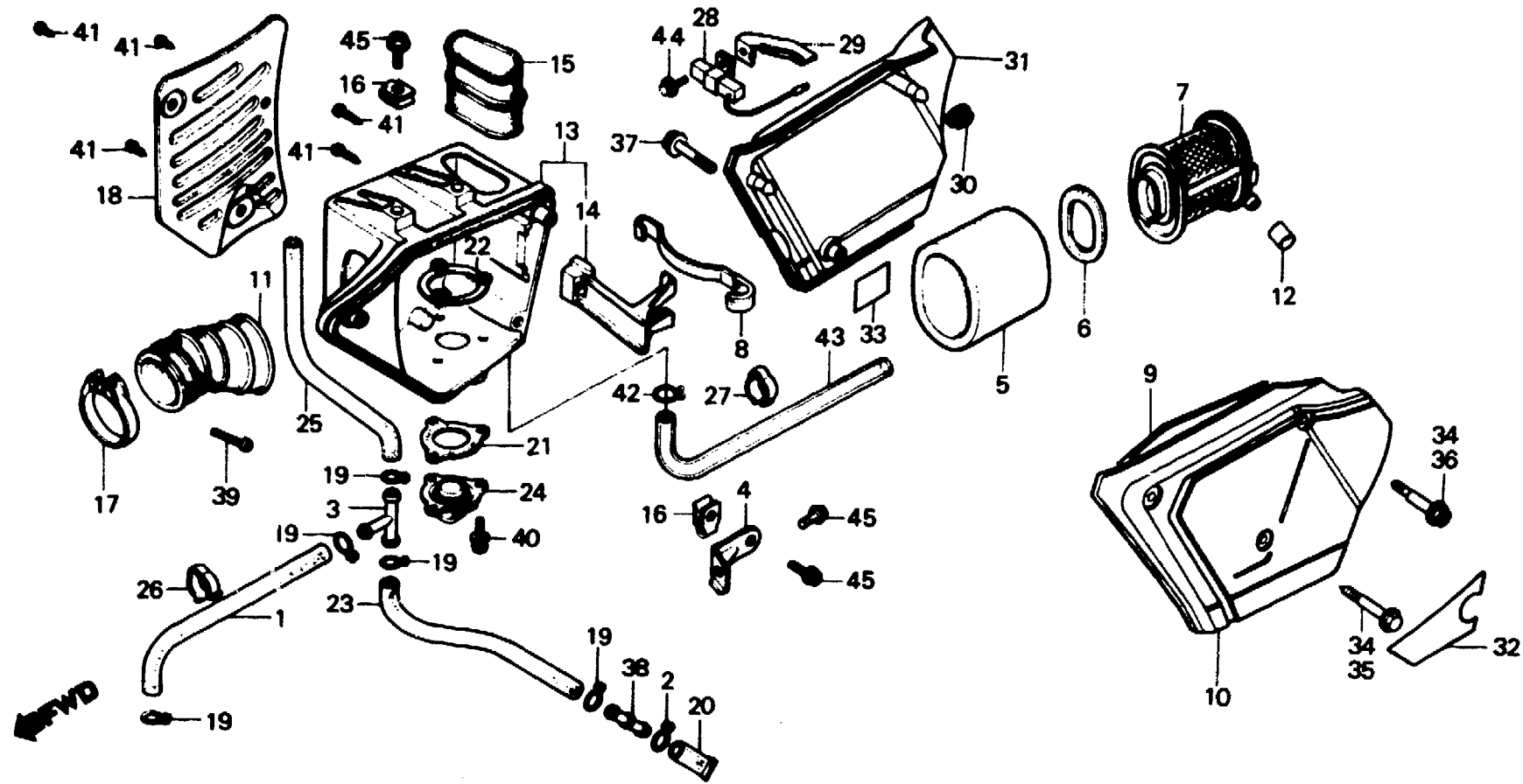
(XL250S, SA, S<sub>B</sub>-B, DK, DM, E, ED, F, F1, F2, G, G1, G2, SA, SD, U)

**Luftfilter**

(XL250S, SA, S<sub>B</sub>-B, DK, DM, E, ED, F, F1, F2, G, G1, G2, SA, SD, U)

**Limpiador de aire**

(XL250S, SA, S<sub>B</sub>-B, DK, DM, E, ED, F, F1, F2, G, G1, G2, SA, SD, U)



B428-46C

Service item	F.R.T.	Ref. No.	Part No.	Description	Reqd. No. XL250				Serial No.	Area code
					S	Sz	SA	S <sub>B</sub>		
			83600-428-000ZB	COVER, R. SIDE *PB-104*	1					DK, DM, E, ED, F, G, SA, U
			83600-428-000ZC	COVER, R. SIDE *NH-24*	1					DK, DM, E, ED, F, G, SA, U
			83600-428-870ZB	COVER, R. SIDE *R-23*			1			B, DK, DM, E, ED, F1, F2, G1, G2, SA, SD, U
			83600-428-870ZC	COVER, R. SIDE *NH-24*			1			B, DK, DM, E, ED, F1, F2, G1, G2, SA, SD, U
			83600-428-830ZA	COVER, R. SIDE *R-110*				1		B, DK, DM, E, ED, F1, F2, G1, G2, SA, SD, U
			83600-428-830ZB	COVER, R. SIDE *NH-104M-U*				1		B, DK, DM, E, ED, F1, F2, G1, G2, SA, SD, U
			83600-428-830ZC	COVER, R. SIDE *NH-111*				1		B, DK, DM, E, ED, F1, F2, G1, G2, SA, SD, U
		32	87507-428-620	MARK, AIR CLEANER CAUTION	1					F
			87507-428-670	MARK, AIR CLEANER CAUTION	1					DK, DM, E, ED, G, SA, U
			87507-435-620	MARK, AIR CLEANER CAUTION			1			F1, F2
			87507-435-670	MARK, AIR CLEANER CAUTION			1			B, DK, DM, E, ED, G1, G2, SA, SD, U

**2-C6**

**F-15-1**

**Air cleaner**

(XL250S, SA, Sb-B, DK, DM, E, ED, F, F1, F2, G, G1, G2, SA, SD, U)

**Filtre à air**

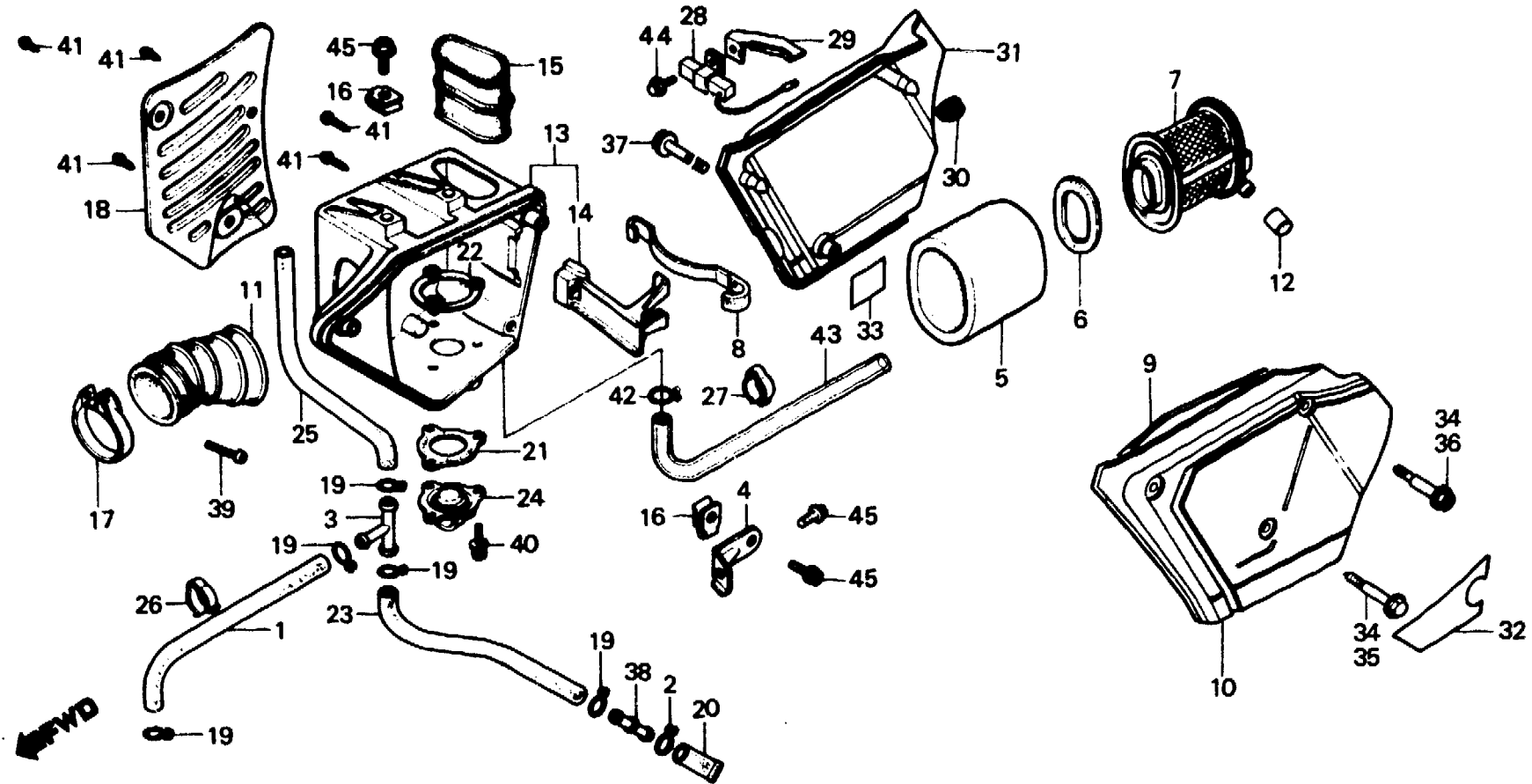
(XL250S, SA, Sb-B, DK, DM, E, ED, F, F1, F2, G, G1, G2, SA, SD, U)

**Luftfilter**

(XL250S, SA, Sb-B, DK, DM, E, ED, F, F1, F2, G, G1, G2, SA, SD, U)

**Limpiador de aire**

(XL250S, SA, Sb-B, DK, DM, E, ED, F, F1, F2, G, G1, G2, SA, SD, U)



B428-46C

Service item	F.R.T.	Ref. No.	Part No.	Description	Reqd. No.					Serial No.	Area code
					S	Sz	SA	Sb	Rc		
		33	87507-429-620	MARK, AIR CLEANER CAUTION (FRENCH)						1	F1, F2
			87508-120-000	LABEL, AIR CLEANER CAUTION						1	B, DK, DM, E, ED, G1, G2, SA, SD, U
		34	90112-428-000	BOLT, AIR CLEANER CASE SETTING	3						DK, DM, E, ED, F, G, SA, U
		35	90112-434-000	BOLT A, AIR CLEANER CASE SETTING				1	1		B, DK, DM, E, ED, G1, G2, SA, SD, U
										1	F1, F2
		36	90113-434-000	BOLT C, AIR CLEANER CASE SETTING				2	2		B, DK, DM, E, ED, G1, G2, SA, SD, U
										2	F1, F2
		37	90114-429-000	BOLT B, AIR CLEANER CASE				1	1		B, DK, DM, E, ED, F1, F2, G1, G2, SA, SD, U
		38	91463-393-780	JOINT, TUBE	1			1			B, F, G
					1			1	1		DK, DM, E, ED, F1, F2, G1, G2, SA, SD, U
		39	93500-05025-0G	SCREW, PAN, 5X25	1			1	1		B, DK, DM, E, ED, F, F1, F2, G, G1, G2, SA, SD, U

**2-C7**

**F-15-1**

**Air cleaner**

(XL250S, SA, Sb-B, DK, DM, E, ED, F, F1, F2, G, G1, G2, SA, SD, U)

**Filtre à air**

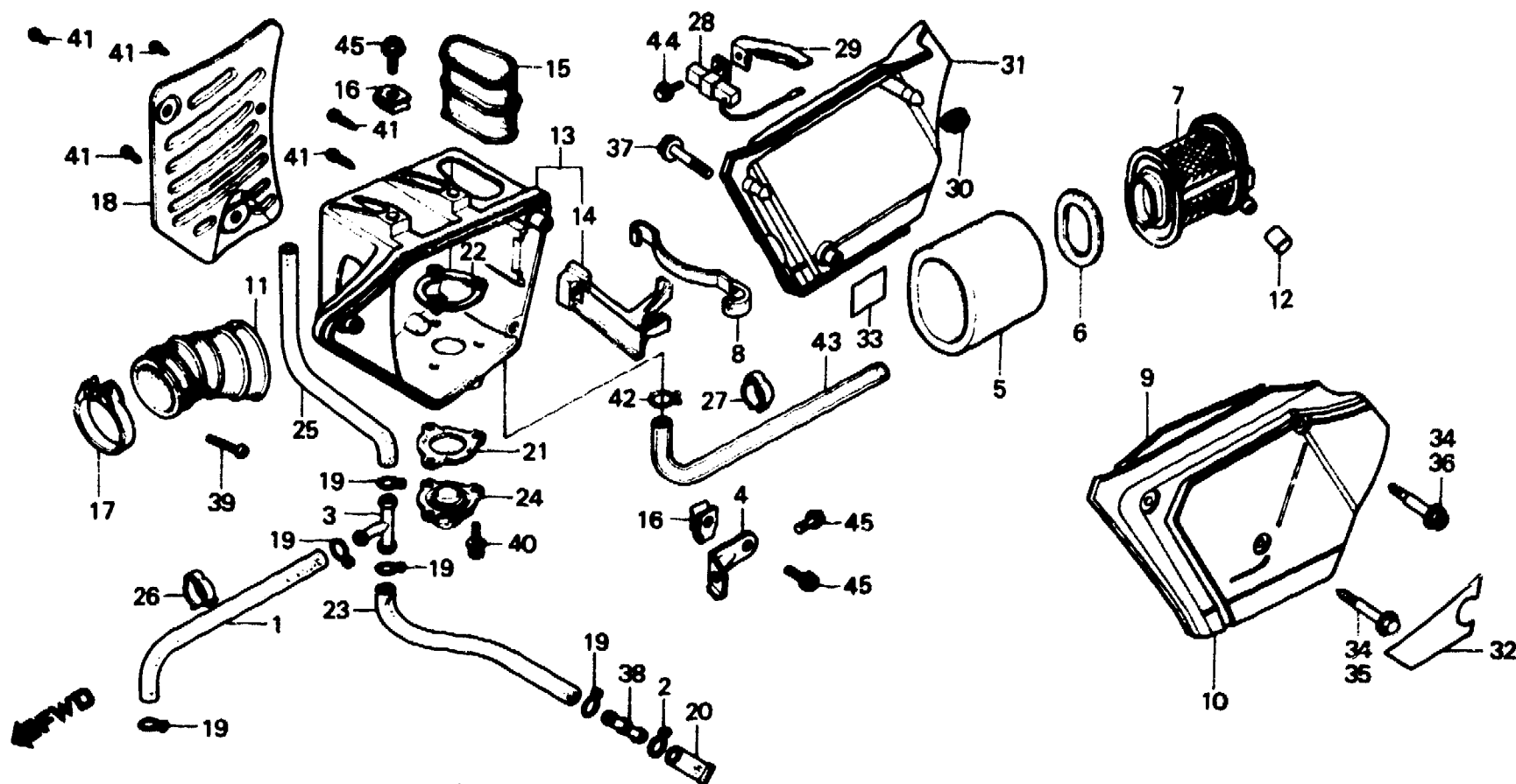
(XL250S, SA, Sb-B, DK, DM, E, ED, F, F1, F2, G, G1, G2, SA, SD, U)

**Luftfilter**

(XL250S, SA, Sb-B, DK, DM, E, ED, F, F1, F2, G, G1, G2, SA, SD, U)

**Limpiador de aire**

(XL250S, SA, Sb-B, DK, DM, E, ED, F, F1, F2, G, G1, G2, SA, SD, U)



B428-46C

Service item	F.R.T.	Ref. No.	Part No.	Description	Reqd. No.				Serial No.	Area code
					S	Sz	SA	Sb		
		40	93891-04012-08	SCREW-WASHER, 4X12	3		3	3		B, DK, DM, E, ED, F, F1, F2 G, G1, G2, SA, SD, U
		41	93901-34520	SCREW, TAPPING, 4X20	5		5	5		B, DK, DM, E, ED, F, F1, F2 G, G1, G2, SA, SD, U
		42	95002-02130	CLIP B12.5, TUBE	2		2	2		B, DK, DM, E, ED, F, F1, F2 G, G1, G2, SA, SD, U
		43	95003-23038-10	TUBE, VINYL, 8X12X380	1		1	1		B, DK, DM, E, ED, F, F1, F2 G, G1, G2, SA, SD, U
		44	95700-06010-00	BOLT, FLANGE, 6X10				1		B, DK, DM, E, ED, F1, F2, G1 G2, SA, SD, U
		45	95700-06012-00	BOLT, FLANGE, 6X12	4		4	4		B, DK, DM, E, ED, F, F1, F2 G, G1, G2, SA, SD, U

**2-C8**

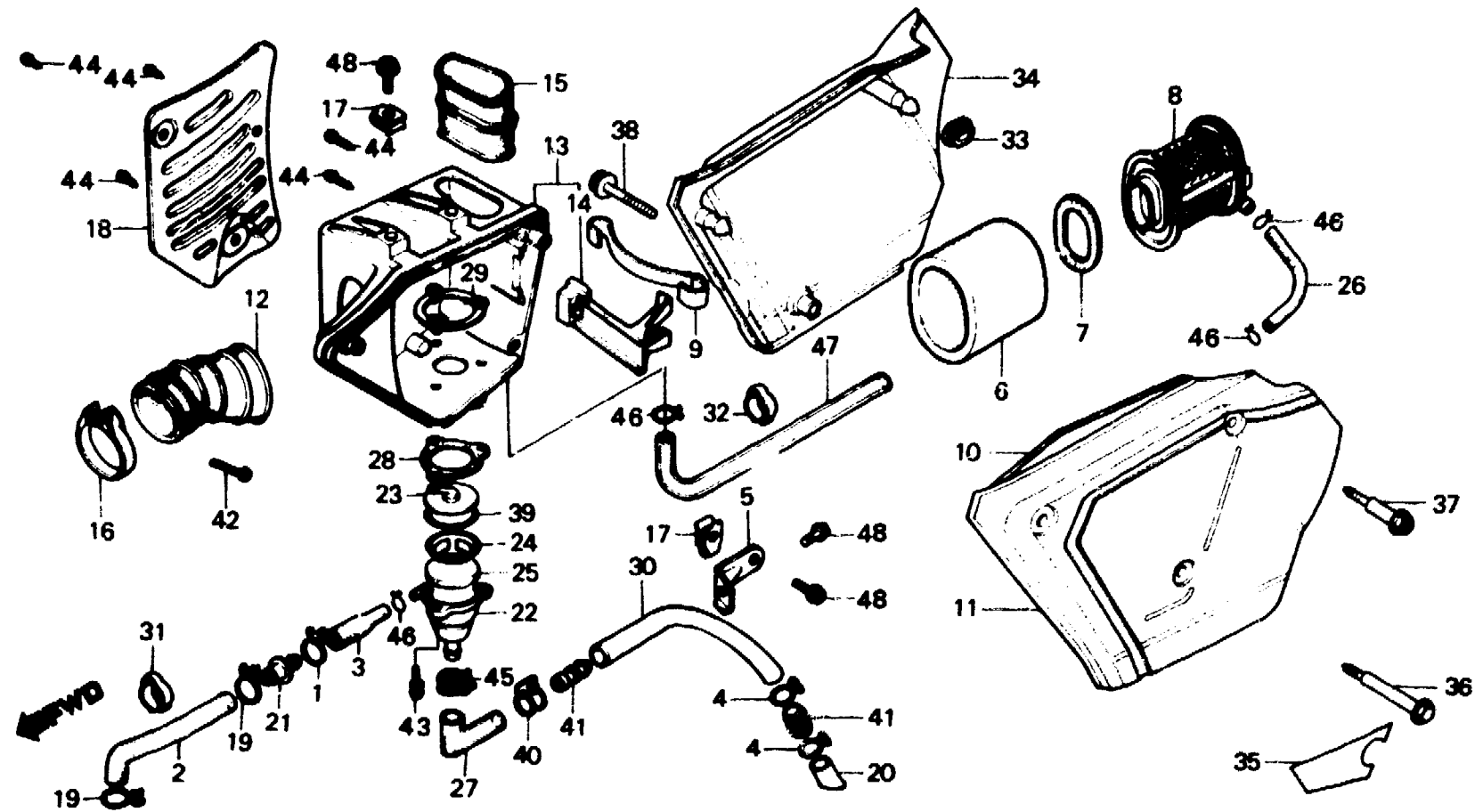
**F-15-2**

**Air cleaner  
(XL250SA,SB-CM)**

**Filtre à air  
(XL250SA,SB-CM)**

**Luftfilter  
(XL250SA,SB-CM)**

**Limpiador de aire  
(XL250SA,SB-CM)**



B428-29A

Service item	F.R.T.	Ref. No.	Part No.	Description	Reqd. No.				Serial No.	Area code
					S	Sz	SA	Sb		
ELEMENT, AIR CLEANER	0.2	1	15707-634-000	CLIP, OIL DRAIN	1					CM
HOLDER, ELEMENT	0.1	2	15761-428-670	TUBE A, BREATHER	1					CM
COVER, AIR CLEANER CASE		3	15762-428-670	TUBE B, BREATHER	1					CM
TUBE, AIR CLEANER IN.		4	15772-292-010	CLIP, BREATHER TUBE	2					CM
TUBE, AIR CLEANER CONNECTING	0.4	5	17201-428-000	STAY, AIR CLEANER	1					CM
CASE, AIR CLEANER	0.7									
BODY, BREATHER SEPARATOR		6	17211-428-000	ELEMENT, AIR CLEANER	1					CM
PROTECTOR, AIR CLEANER	0.5	7	17213-428-300	RUBBER, ELEMENT SEAL	1					CM
		8	17214-428-000	HOLDER, ELEMENT	1					CM
		9	17217-385-000	SPRING, ELEMENT SETTING	1					CM
		10	17219-413-000	SEAL, AIR CLEANER COVER	1					CM
		11	17220-428-870ZA	COVER, AIR CLEANER CASE *R-33*	1					CM
			17220-428-840ZC	COVER, AIR CLEANER CASE *R-110*				1		CM
		12	17222-428-000	TUBE, AIR CLEANER CONNECTING	1					CM
		13	17230-428-000	CASE, AIR CLEANER	1					CM
		14	17231-428-300	HOLDER, SET SPRING	1					CM

**2-C9**

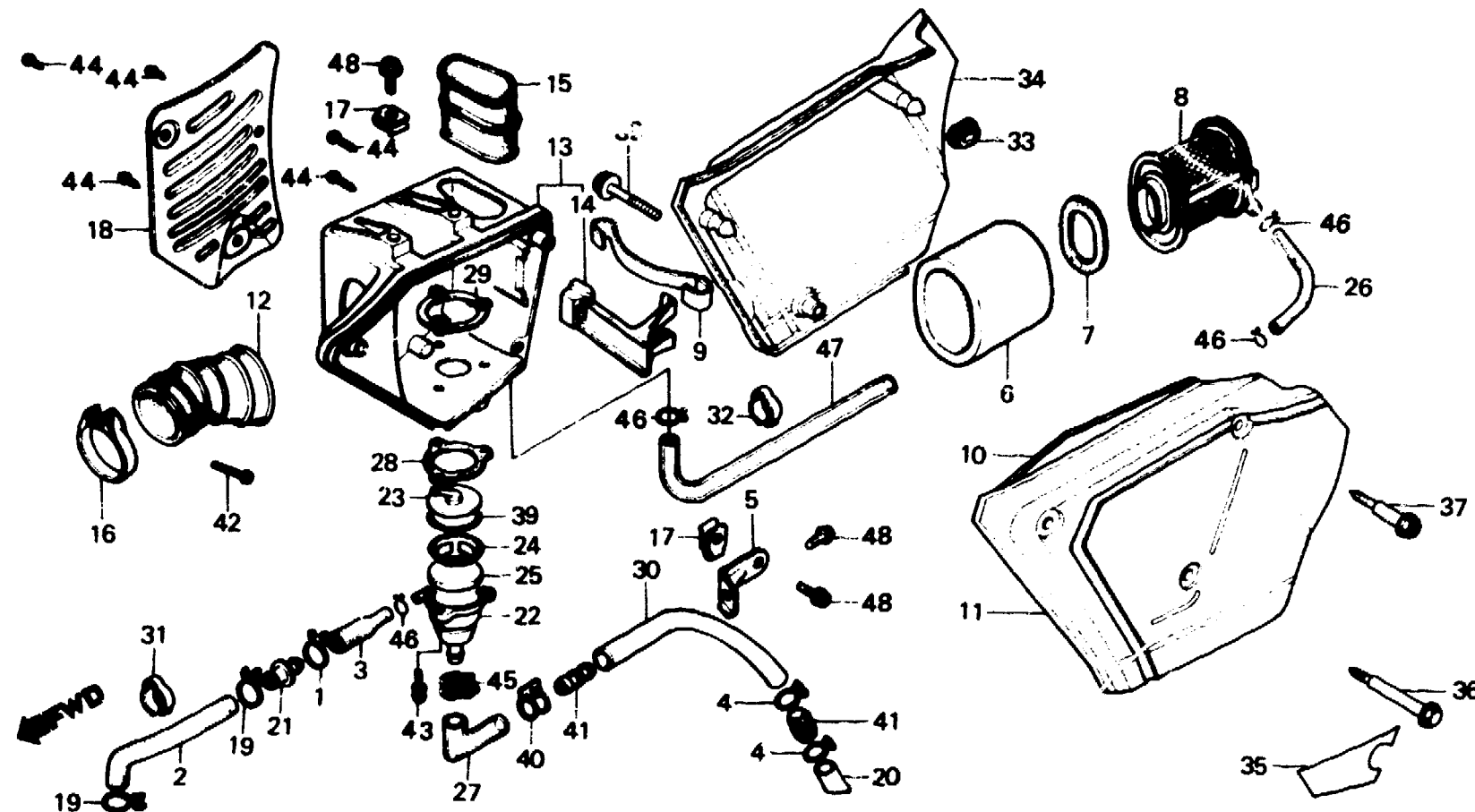
**F-15-2**

**Air cleaner  
(XL250SA,SB-CM)**

**Filtre à air  
(XL250SA,SB-CM)**

**Luftfilter  
(XL250SA,SB-CM)**

**Limpiador de aire  
(XL250SA,SB-CM)**



B428-29A

Service item	F.R.T.	Ref. No.	Part No.	Description	Reqd. No. XL250					Serial No.	Area code
					S	Sz	SA	SB	Rc		
		15	17240-428-000	TUBE, AIR CLEANER IN.			1	1			CM
		16	17252-428-000	BAND A, CONNECTING TUBE			1	1			CM
		17	17254-428-000	NUT, AIR CLEANER SETTING			3	3			CM
		18	17260-428-000	PROTECTOR, AIR CLEANER			1	1			CM
		19	17316-611-000	CLIP, BREATHER TUBE			2	2			CM
		20	17358-381-000	TUBE, DRAIN			1	1			CM
		21	17359-428-000	JOINT, BREATHER TUBE			1	1			CM
		22	17361-419-670	BODY, BREATHER SEPARATOR			1	1			CM
		23	17362-419-670	CAP, BREATHER SEPARATOR			1	1			CM
		24	17363-419-670	HOLDER, ELEMENT			1	1			CM
		25	17364-419-000	ELEMENT, CONDENSATION			1	1			CM
		26	17365-428-670	TUBE, BREATHER JOINT			1	1			CM

# 2-C10

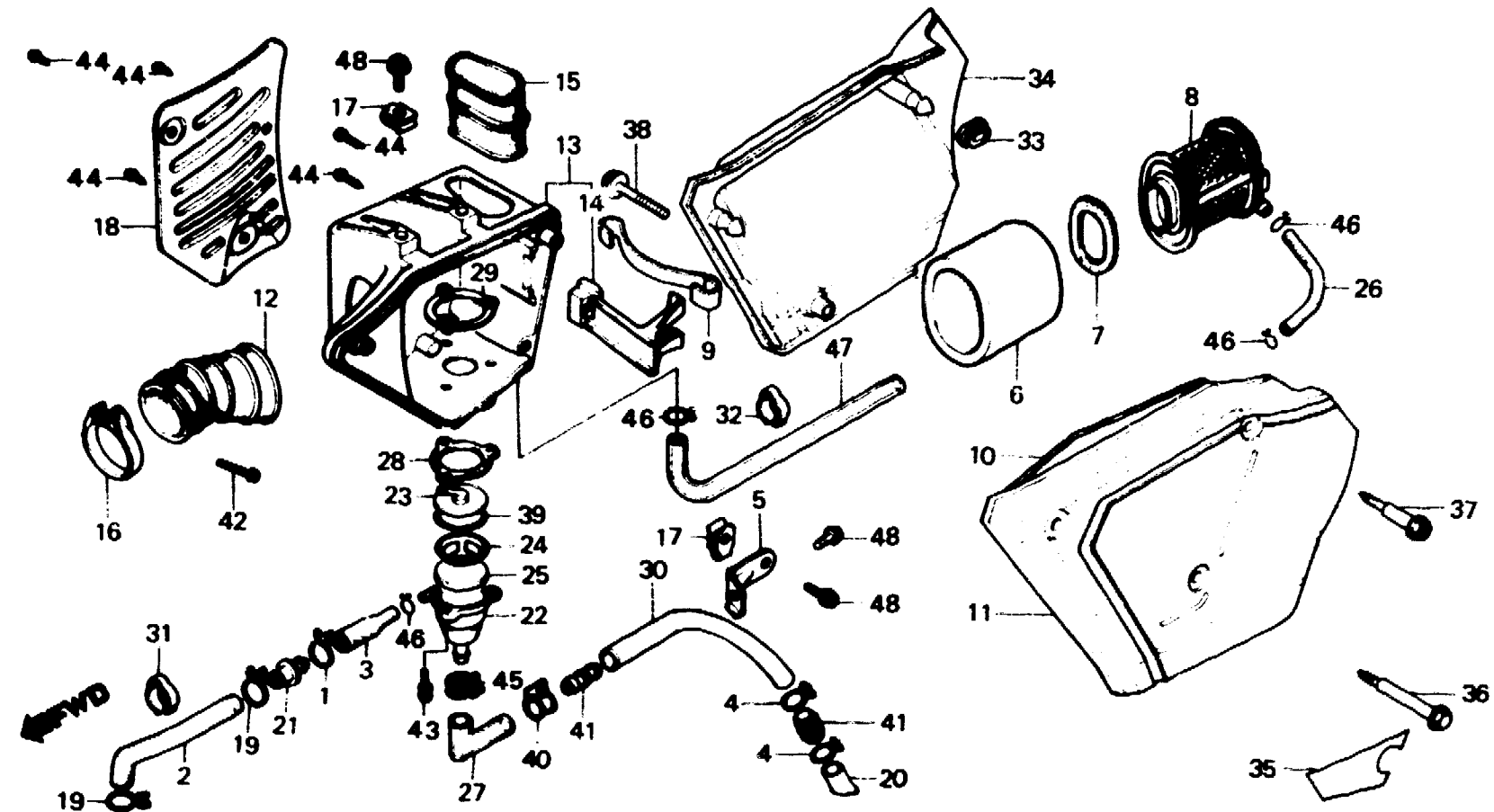
## F-15-2

**Air cleaner**  
(XL250SA,SB-CM)

**Filtre à air**  
(XL250SA,SB-CM)

**Luftfilter**  
(XL250SA,SB-CM)

**Limpiador de aire**  
(XL250SA,SB-CM)



8428-29A

Service item	F.R.T.	Ref. No.	Part No.	Description	Reqd. No.				Serial No.	Area code
					S	Sz	SA	Se Rc		
		27	17366-428-670	TUBE A, DRAIN			1	1		CM
		28	17367-428-000	RUBBER, BREATHER SEAL			1	1		CM
		29	17368-428-000	PLATE, SEPARATE BACK			1	1		CM
		30	17369-428-670	TUBE B, DRAIN			1	1		CM
		31	32975-428-000	CLIP, PULSER CORD			1	1		CM
		32	32976-428-000	CLIP, WIRE			1	1		CM
		33	83551-300-000	GROMMET, AIR CLEANER CASE			2	2		CM
		34	83600-428-870ZA	COVER, R. SIDE *R-33*			1			CM
			83600-428-840ZC	COVER, R. SIDE *R-110*			1	1		CM
		35	87507-435-620	MARK, AIR CLEANER CAUTION			1	1		CM
			87507-435-670	MARK, AIR CLEANER CAUTION			1			CM
		36	90112-434-000	BOLT A, AIR CLEANER CASE SETTING			1	1		CM

**2-C11**

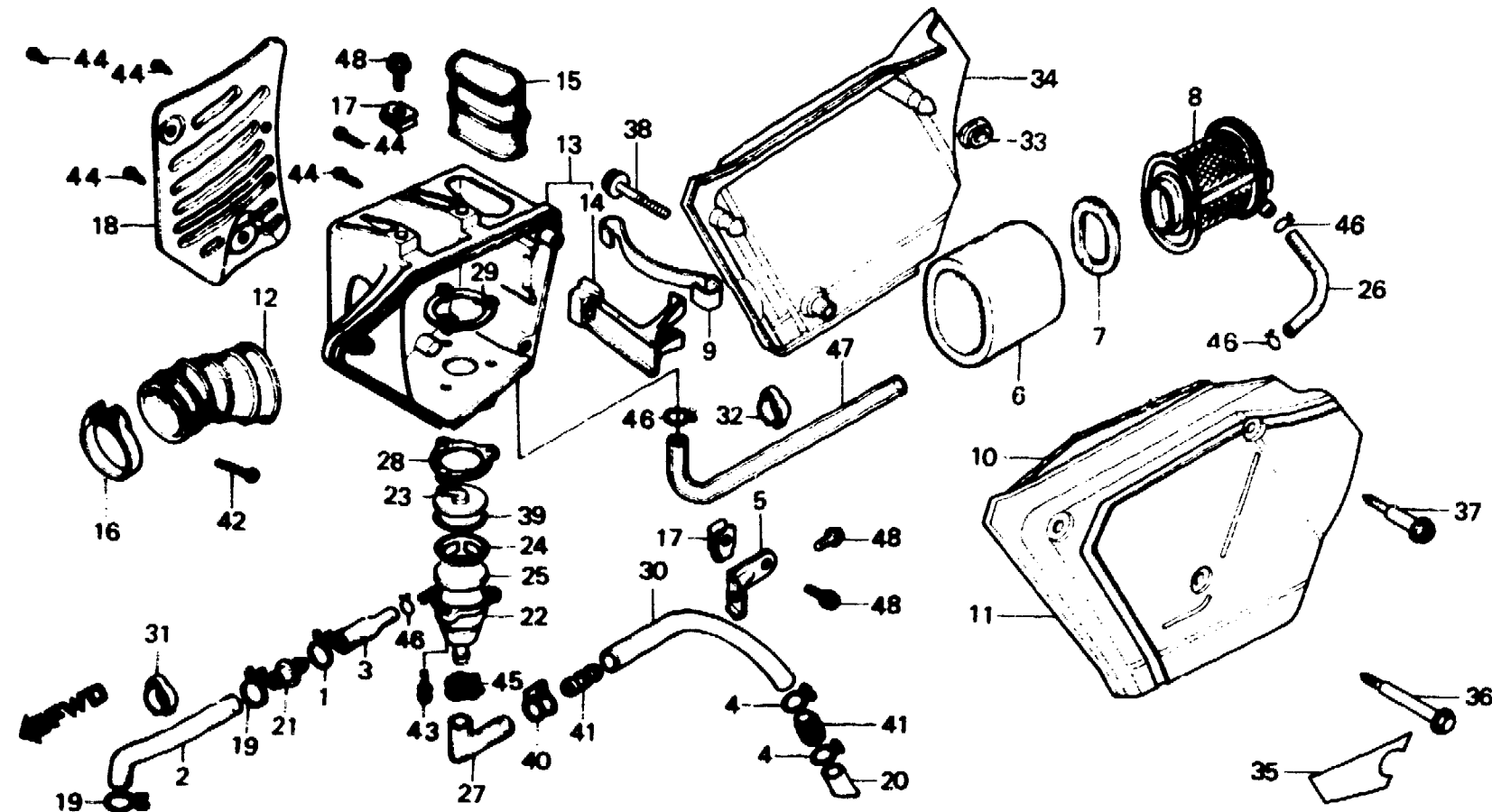
**F-15-2**

**Air cleaner  
(XL250SA,SB-CM)**

**Filtre à air  
(XL250SA,SB-CM)**

**Luftfilter  
(XL250SA,SB-CM)**

**Limpiador de aire  
(XL250SA,SB-CM)**



B428-29A

Service item	F.R.T.	Ref. No.	Part No.	Description	Reqd. No.				Serial No.	Area code
					S	Sz	SA	SA		
		37	90113-434-000	BOLT C, AIR CLEANER CASE SETTING			2	2		CM
		38	90114-429-000	BOLT B, AIR CLEANER CASE			1	1		CM
		39	91305-419-670	O-RING, 47X1.9			1	1		CM
		40	91462-393-780	CLIP, TUBE			1	1		CM
		41	91463-393-780	JOINT, TUBE			2	2		CM
		42	93500-05025-0G	SCREW, PAN, 5X25			1	1		CM
		43	93891-34020-08	SCREW-WASHER, 4X20			3	3		CM
		44	93901-34520	SCREW, TAPPING, 4X20			5	5		CM
		45	95002-01160	CLIP A16, TUBE			1	1		CM
		46	95002-02130	CLIP B12.5, TUBE			4	4		CM
		47	95003-23038-10	TUBE, VINYL, 8X12X380			1	1		CM
		48	95700-06012-00	BOLT, FLANGE, 6X12			4	4		CM