

L 12

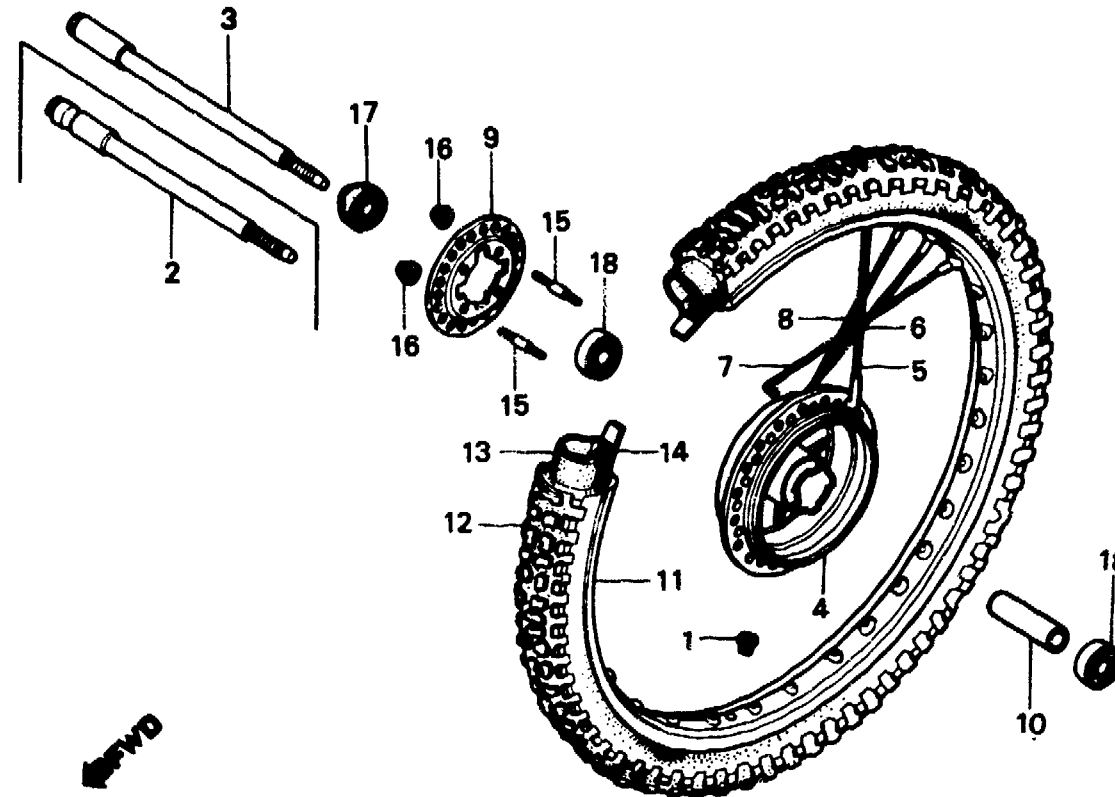
F-9

**Front wheel
(XL250S·Sz·SA·SB)**

**Roue avant
(XL250S·Sz·SA·SB)**

**Vorderrad
(XL250S·Sz·SA·SB)**

**Rueda delantera
(XL250S·Sz·SA·SB)**



B428-23A

Service item	F.R.T.	Ref. No.	Part No.	Description	Reqd. No. XL250					Serial No.	Area code
					S	Sz	SA	Sb	Rc		
AXLE, FR. WHEEL	0.3	1	42717-329-000	CAP, RIM HOLE	1	1	1	1			
HUB COMP., FR. WHEEL	2.8	2	44301-428-000	AXLE, FR. WHEEL	1		1			B,DK,DM,E,ED,F,F1,F2 G,G1,G2,SA,SD,SW,U CM	
FLANGE, FR. SPOKE	2.2										
RIM, FR. WHEEL					1	1	1	1			
COLLAR, FR. WHEEL DISTANCE	0.5	3	44301-434-000	AXLE, FR. WHEEL				1		B,DK,DM,E,ED,F1,F2,G1 G2,SA,SD,SW,U	
BEARING, RADIAL BALL, 6202U (ADD 0.1 FOR EACH.)		4	44601-430-000	HUB COMP., FR. WHEEL	1	1	1	1			
TIRE, FR.	1.0	5	44606-428-305	SPOKE ASSY. A, FR.	9				5024920	DK,DM,E,ED,F,G,SA,SW U CM	
TUBE, TIRE					9	9			5201180	CM	
BOLT, STUD, 6X28 (ADD 0.1 FOR EACH.)	0.4		44606-444-305	SPOKE ASSY. A, FR.	9				5024921	DK,DM,E,ED,F,G,SA,SW U CM	
									5201181	CM	
										B,DK,DM,E,ED,G1,G2,SA SD,SW,U CM,F1,F2	

L 13

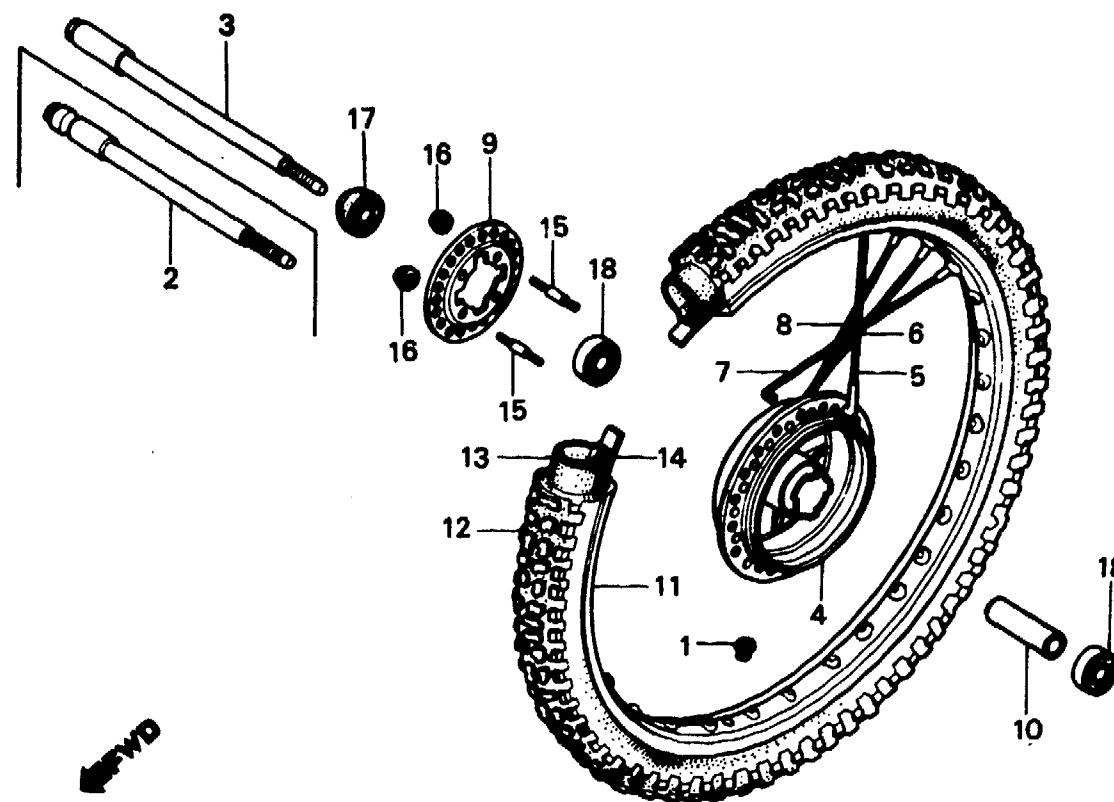
F-9

**Front wheel
(XL250S·Sz·SA·SB)**

**Roue avant
(XL250S·Sz·SA·SB)**

**Vorderrad
(XL250S·Sz·SA·SB)**

**Rueda delantera
(XL250S·Sz·SA·SB)**



B428-23A

Service item	F.R.T.	Ref. No.	Part No.	Description	Reqd. No.					Serial No.	Area code		
					S	Sz	SA	Sb	Rc				
		6	44607-428-305	SPOKE ASSY. B, FR.	9					5024920	DK,DM,E,ED,F,G,SA,SW U		
						9	9					CM	
			44607-444-305	SPOKE ASSY. B, FR.	9		9			5024921	5201180	CM	
						9		9		5201181		CM	
		7		44608-428-305	SPOKE ASSY. C, FR.	9					5024920	DK,DM,E,ED,F,G,SA,SW U	
						9	9						CM
								9			5201180	CM	
						44608-444-305	SPOKE ASSY. C, FR.	9		9		5024921	5201180
					9		9	5201181		CM			
					9	9				B,DK,DM,E,ED,G1,G2,SA SD,SW,U			
							9			CM,F1,F2			

L 14

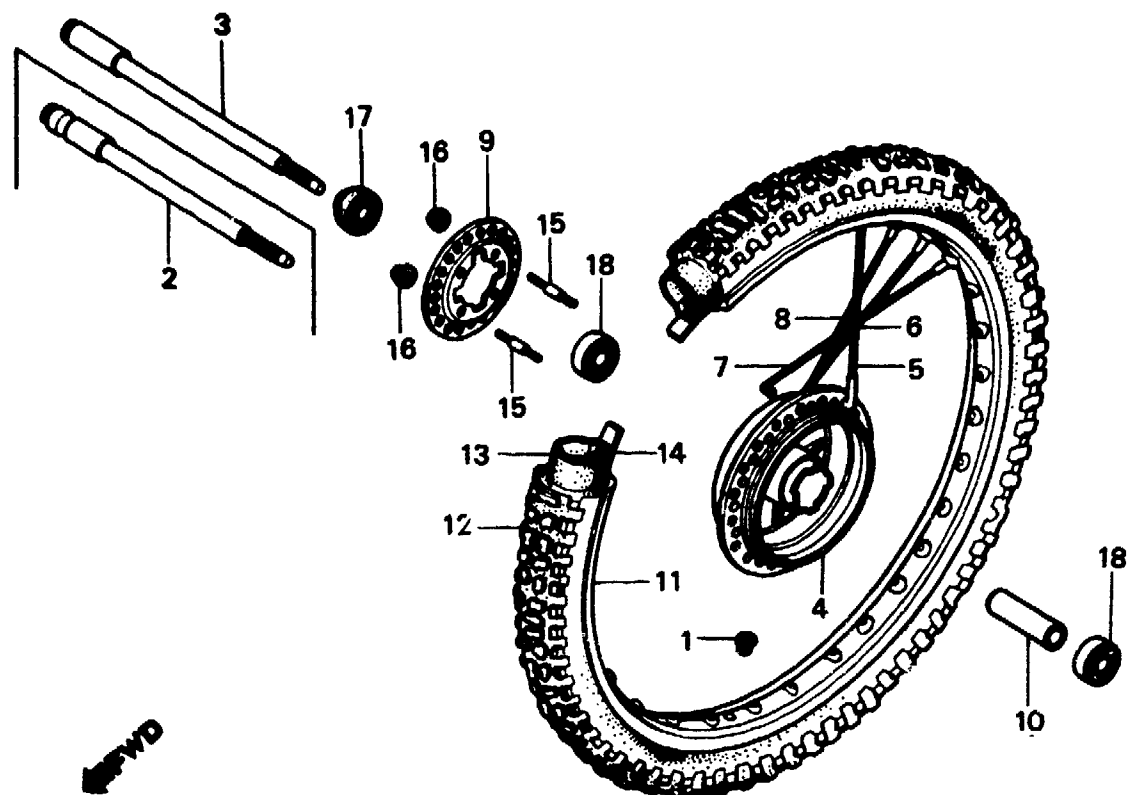
F-9

**Front wheel
(XL250S·SZ·SA·SB)**

**Roue avant
(XL250S·SZ·SA·SB)**

**Vorderrad
(XL250S·SZ·SA·SB)**

**Rueda delantera
(XL250S·SZ·SA·SB)**



B428-23A

Service item	F.R.T.	Ref. No.	Part No.	Description	Reqd. No.				Serial No.	Area code
					S	Sz	SA	Sb		
		8	44609-428-305	SPOKE ASSY. D, FR.	9				5024920	DK,DM,E,ED,F,G,SA,SW U CM
			44609-444-305	SPOKE ASSY. D, FR.	9	9			5201180	CM
					9				5024921	DK,DM,E,ED,F,G,SA,SW U SD
					9				5201181	CM
		9	44610-428-000	FLANGE, FR. SPOKE	1		9		5024920	B,DK,DM,E,ED,G1,G2,SA SW,U CM,F1,F2,SD
			44610-429-000	FLANGE, FR. SPOKE	1	1			5201180	CM
					1				5024921	DK,DM,E,ED,F,G,SA,SW U
					1				5201181	CM
					1	1				B,DK,DM,E,ED,G1,G2,SA SD,SW,U CM,F1,F2
							1			

1982.01.10

E

L14

L 15

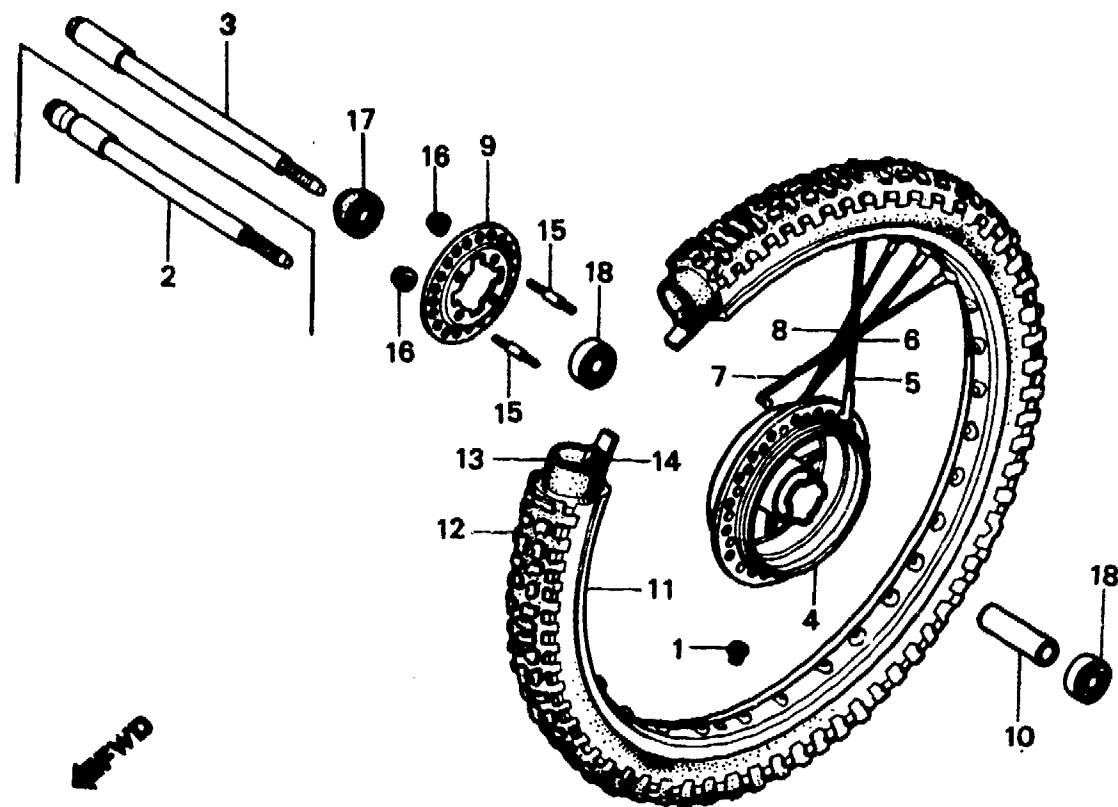
F-9

**Front wheel
(XL250S·Sz·SA·SB)**

**Roue avant
(XL250S·Sz·SA·SB)**

**Vorderrad
(XL250S·Sz·SA·SB)**

**Rueda delantera
(XL250S·Sz·SA·SB)**



B428-23A

Service item	F.R.T.	Ref. No.	Part No.	Description	Reqd. No.				Serial No.	Area code
					S	Sz	SA	Sb		
		10	44620-430-000	COLLAR, FR. WHEEL DISTANCE	1	1	1	1		
		11	44701-428-003	RIM, FR. WHEEL (1.6X23)	1	1	1	1		
		12	44711-428-009	TIRE, FR. (3.00-23 YOKOHAMA)	1		1	1		B,DK,DM,E,ED,F,F1,F2 G,G1,G2,SA,SD,SW,U CM
			44711-428-671	TIRE, FR. (3.00-23 YOKOHAMA)	1	1	1	1		
		13	44712-428-009	TUBE, TIRE (3.00-23 YOKOHAMA)	1	1	1	1		
		14	44713-428-009	FLAP, TIRE (1.60X23 YOKOHAMA)	1	1	1	1		
		15	90135-107-720	BOLT, STUD, 6X28	4	4	4	4		
		16	90352-122-003	NUT, DRIVEN SPROCKET (TOKAI)	4	4	4	4		
		17	91254-430-003	DUST SEAL, 20X35X7	1	1	1	1		
			91254-430-005	DUST SEAL, 20X35X7	1	1	1	1		
		18	96140-62020-10	BEARING, RADIAL BALL, 6202U	2	2	2	2		

L 16

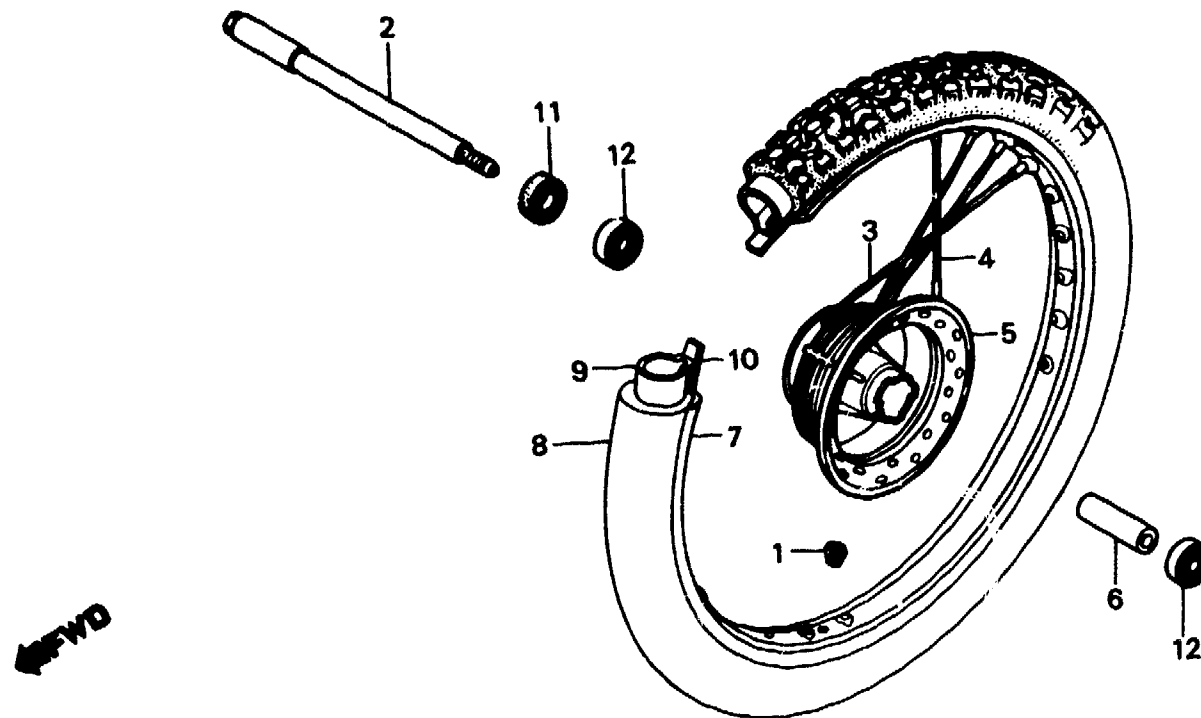
F-9-1

**Front wheel
(XL250Rc)**

**Roue avant
(XL250Rc)**

**Vorderrad
(XL250Rc)**

**Rueda delantera
(XL250Rc)**



BKB7-7

Service item	F.R.T.	Ref. No.	Part No.	Description	Reqd. No.					Serial No.	Area code
					S	Sz	SA	Sb	Rc		
AXLE COMP., FR. WHEEL	0.3	1	42717-329-000	CAP, RIM HOLE					1		
HUB COMP., FR. WHEEL	2.6	2	44301-KA2-000	AXLE COMP., FR. WHEEL					1		
COLLAR, FR. AXLE DISTANCE	0.5	3	446A0-MC4-000	SPOKE SET (BS8X238)					18		
BEARING, RADIAL BALL, 6202U (ADD 0.1 FOR EACH.)		4	446B0-MC4-000	SPOKE SET (BS8X197.5)					18		
RIM, FR. WHEEL	2.2	5	44601-KB7-000	HUB COMP., FR. WHEEL					1		
TIRE, FR.	1.0	6	44620-230-000	COLLAR, FR. AXLE DISTANCE					1		
TUBE, TIRE		7	44701-MC4-003	RIM, FR. WHEEL (1.60X21)					1		
		8	44711-MC4-009	TIRE, FR. (3.00-21-4PR) (YOKOHAMA)					1		B,DK,DM,E,ED,F1,F2,G1 G2,IT,SA,SD,SW,U CM
			44711-MC4-671	TIRE, FR. (3.00-21-4PR) (YOKOHAMA)					1		
		9	44712-MC4-009	TUBE, TIRE (3.00/3.25/3.50-21) (YOKOHAMA)					1		
		10	44713-437-009	FLAP, TIRE (21 YOKOHAMA)					1		
		11	91254-430-003	DUST SEAL, 20X35X7					1		
			91254-430-005	DUST SEAL, 20X35X7					1		
		12	96140-62020-10	BEARING, RADIAL BALL, 6202U					2		

M 1

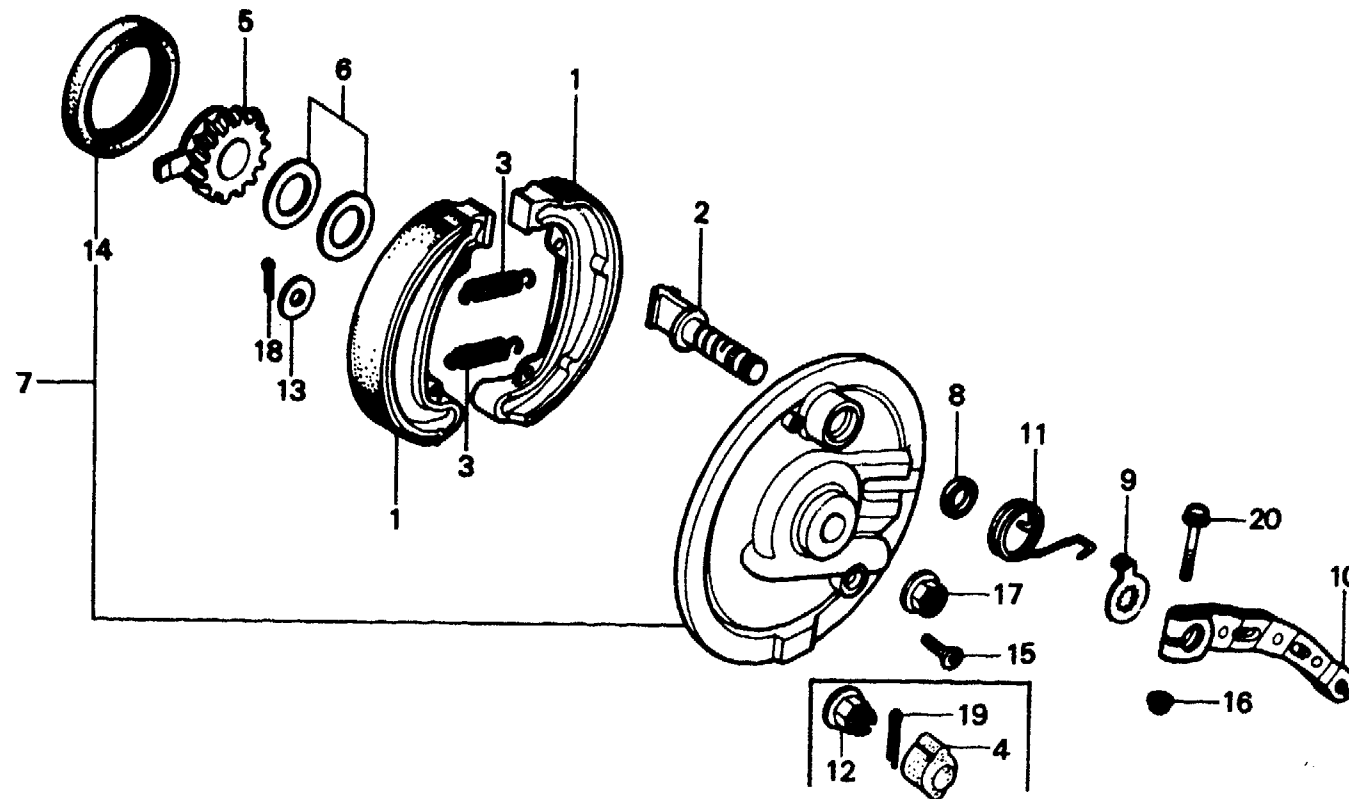
F-10

**Front brake panel
(XL250S·SZ·SA·SB)**

**Plateau de frein avant
(XL250S·SZ·SA·SB)**

**Vorderradbremssankerplatte
(XL250S·SZ·SA·SB)**

**Panel de freno delantero
(XL250S·SZ·SA·SB)**



←FWD

B428-24B

Service item	F.R.T.	Ref. No.	Part No.	Description	S	Reqd. No. XL250				Serial No.	Area code
						Sz	SA	Sb	Rc		
GEAR COMP., SPEEDOMETER	0.3	1	43120-329-670	SHOE COMP., RR. BRAKE	2	2	2	2			
PANEL SUB COMP., FR. BRAKE	0.5	2	43141-399-000	CAM, RR. BRAKE	1						CM
INC. RELATIVE PART					1				5018958		DK,DM,E,ED,F,G,SA,SW
ARM, FR. BRAKE	0.4										U
INC. RELATIVE PART			43141-399-010	CAM, RR. BRAKE	1				5018959	5107114	DK,DM,E,ED,F,G,SA,SW
											U
									5107115		
		3	43151-329-000	SPRING, RR. BRAKE SHOE	2	2	1	1			
		4	44302-383-610	CAP, AXLE NUT	1	1	1	2			ED,G,G1,G2,SD
		5	44804-428-000	GEAR COMP., SPEEDOMETER	1	1	1	1			
		6	44809-402-000	WASHER, SPEEDOMETER GEAR	2	2	2	2			
		7	45010-428-000	PANEL SUB COMP., FR. BRAKE	1	1	1	1			
		8	45134-250-000	DUST SEAL, BRAKE CAM	1	1	1	1			
		9	45145-428-000	INDICATOR, FR. BRAKE	1	1	1	1			

1982.01.10

E

M1

M 2

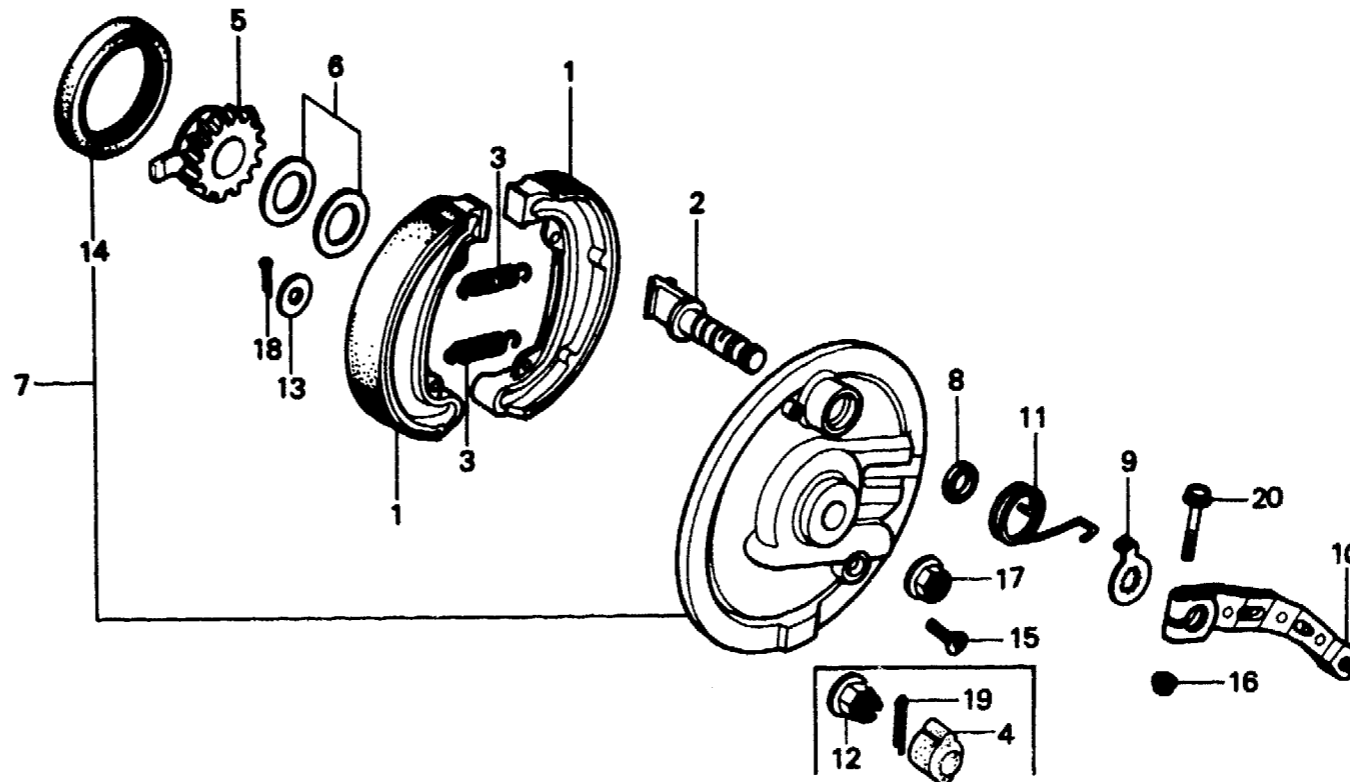
F-10

**Front brake panel
(XL250S·SZ·SA·SB)**

**Plateau de frein avant
(XL250S·SZ·SA·SB)**

**Vorderradbremssankerplatte
(XL250S·SZ·SA·SB)**

**Panel de freno delantero
(XL250S·SZ·SA·SB)**



B428-24B

Service item	F.R.T.	Ref. No.	Part No.	Description	Reqd. No.					Serial No.	Area code
					S	Sz	SA	Sb	Rc		
		10	45410-428-000	ARM, FR. BRAKE	1	1	1	1			
		11	45435-428-000	SPRING, BRAKE ARM RETURN	1	1	1	1			
		12	90305-051-000	NUT, RR. AXLE	1	1	1				
			90305-169-000	NUT, AXLE, 12MM					1		CM
		13	90524-030-000	WASHER A, HANDLE HOLDER	1	1	1	1			
				SETTING							
		14	91251-121-000	OIL SEAL, 47X60X7	1	1	1	1			
		15	93700-05016-0A	SCREW, OVAL, 5X16	1	1	1	1			
		16	94050-06000	NUT, FLANGE, 6MM	1	1	1	1			
		17	94050-12000	NUT, FLANGE, 12MM					1		B,DK,DM,E,ED,F1,F2,G1 G2,SA,SD,SW,U
		18	94201-20200	PIN, SPLIT, 2.0X20	1	1	1	1			
		19	94201-30250	PIN, SPLIT, 3.0X25	1		1				B,DK,DM,E,ED,F,F1,F2 G,G1,G2,SA,SD,SW,U
					1	1	1	1			CM
		20	95700-06032-00	BOLT, FLANGE, 6X32	1	1	1	1			

M 3

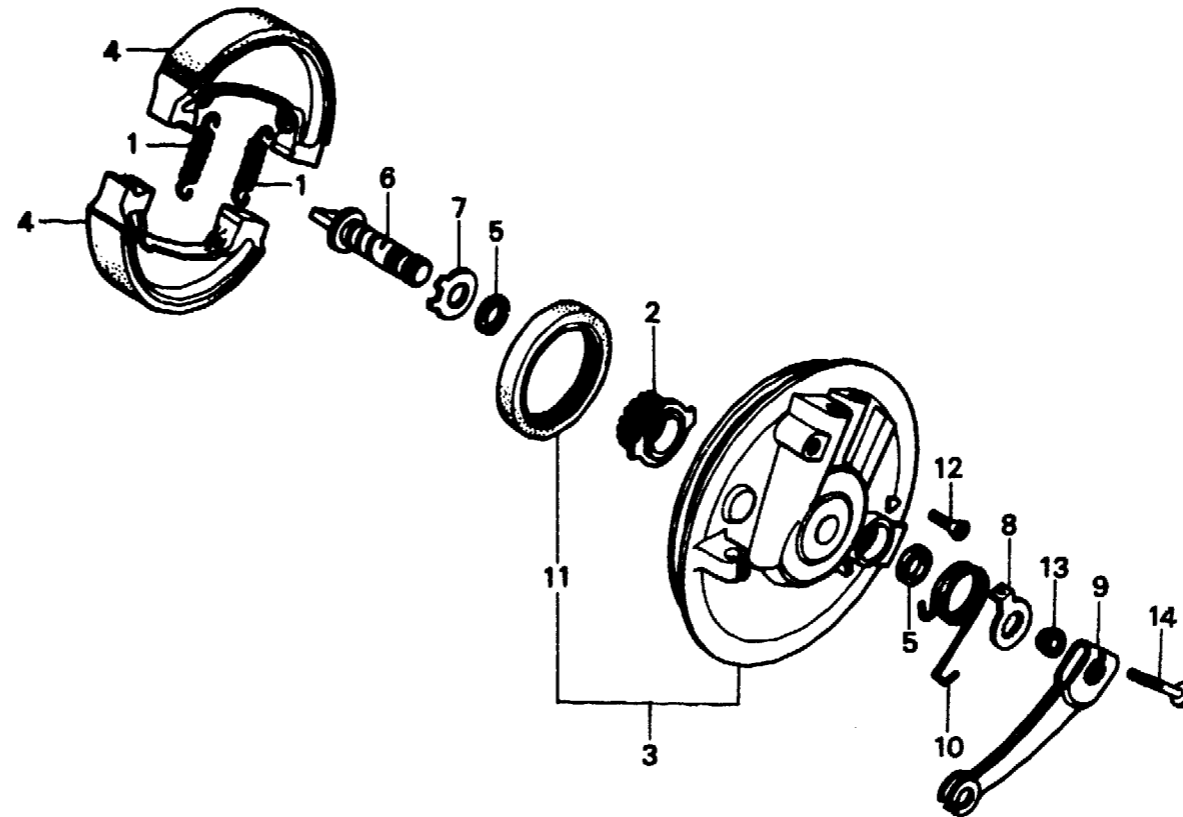
F-10-1

**Front brake panel
(XL250Rc)**

**Plateau de frein avant
(XL250Rc)**

**Vorderradbremsankerplatte
(XL250Rc)**

**Panel de freno delantero
(XL250Rc)**



BKB7-8

Service item	F.R.T.	Ref. No.	Part No.	Description	Reqd. No.					Serial No.	Area code
					S	Sz	SA	Sb	Rc		
GEAR COMP., SPEEDOMETER	0.3	1	43151-329-000	SPRING, RR. BRAKE SHOE						2	
PANEL SUB COMP., FR. BRAKE	0.5	2	44804-KA2-003	GEAR COMP., SPEEDOMETER						1	
INC. RELATIVE PART		3	451A0-KB7-000	PANEL SUB COMP., FR. BRAKE						1	
ARM, FR. BRAKE	0.4	4	45120-KB7-005	SHOE COMP., FR. BRAKE						2	
INC. RELATIVE PART		5	45134-KB7-005	DUST SEAL, BRAKE CAM						2	
		6	45141-KB7-000	CAM, FR. BRAKE						1	
		7	45142-KB7-000	SEAT, FR. BRAKE CAM						1	
		8	45145-KB7-000	INDICATOR, FR. BRAKE						1	
		9	45410-KB7-000	ARM, FR. BRAKE						1	
		10	45435-KB7-000	SPRING, BRAKE ARM RETURN						1	
		11	91251-121-003	OIL SEAL, 47X60X7						1	
			91251-361-005	OIL SEAL, 47X60X7						1	

M 4

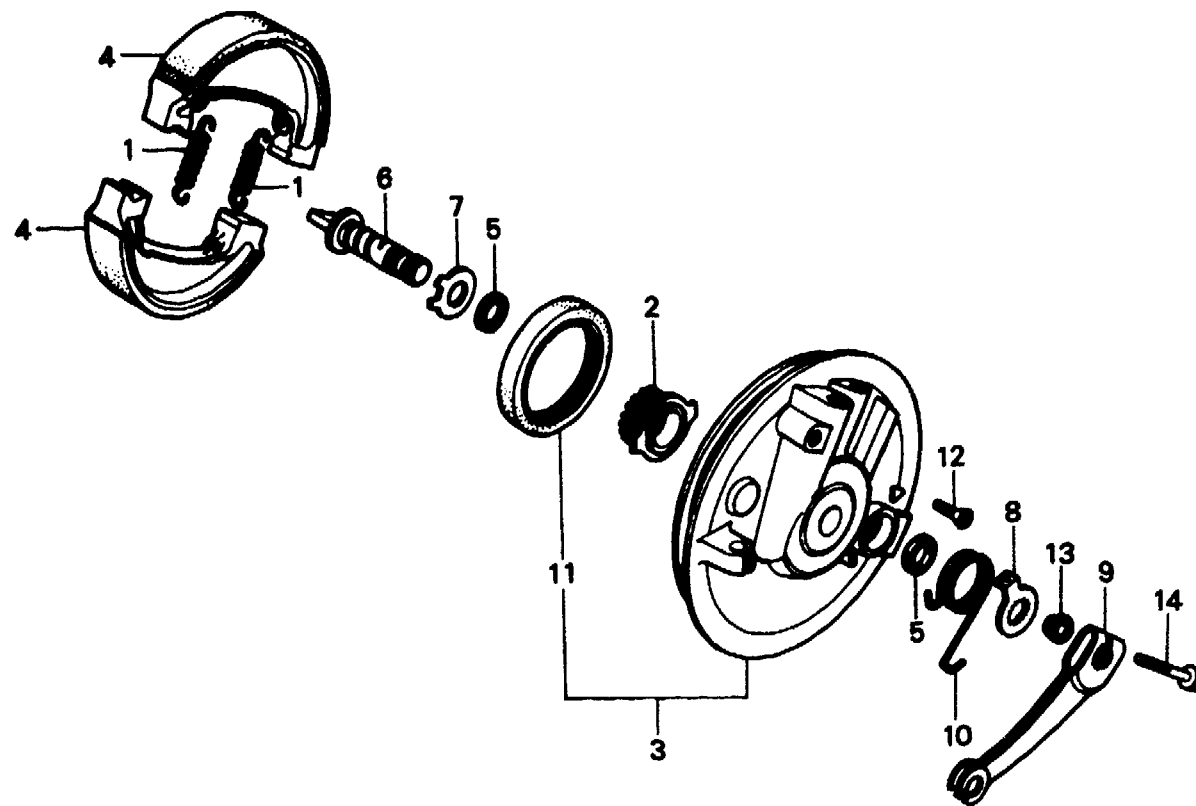
F-10-1

**Front brake panel
(XL250Rc)**

**Plateau de frein avant
(XL250Rc)**

**Vorderradbremsankerplatte
(XL250Rc)**

**Panel de freno delantero
(XL250Rc)**



BKB7-8

Service item	F.R.T.	Ref. No.	Part No.	Description	Reqd. No.					Serial No.	Area code
					S	Sz	SA	Se	Rc		
		12	93700-05016-0A	SCREW, OVAL, 5X16					1		
		13	94050-06000	NUT, FLANGE, 6MM					1		
		14	95700-06032-00	BOLT, FLANGE, 6X32					1		

1982.01.10

E

M4



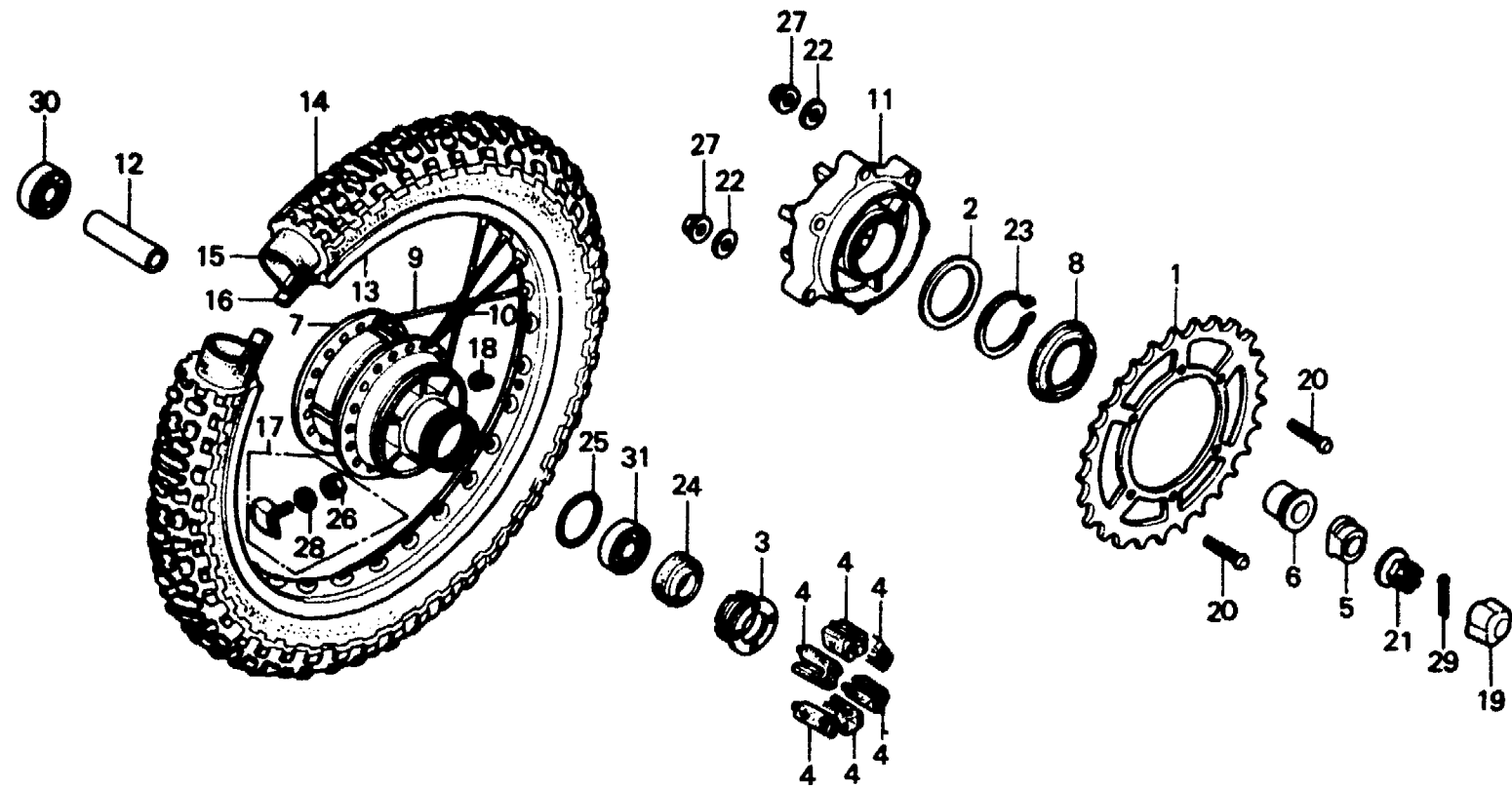
F-11

Rear wheel
(XL250S·SZ·SA·SB)

Roue arrière
(XL250S·SZ·SA·SB)

Hinterrad
(XL250S·SZ·SA·SB)

Rueda trasera
(XL250S·SZ·SA·SB)



B428-25B

Service item	F.R.T.	Ref. No.	Part No.	Description	Reqd. No.				Serial No.	Area code
					S	Sz	SA	Sb		
SPROCKET, FINAL DRIVEN	0.6	1	41201-428-000	SPROCKET, FINAL DRIVEN (53T)	1	1				
FLANGE, FINAL DRIVEN			41201-428-870	SPROCKET, FINAL DRIVEN (53T)			1	1		
RETAINER, BEARING	0.4	2	41204-413-780	WASHER, 80X65	1	1	1	1		
RUBBER, RR. WHEEL DAMPER (ONE OR ALL)	0.5	3	41231-428-000	RETAINER, BEARING	1	1	1	1		
COLLAR, RR. AXLE DISTANCE		4	41241-428-000	RUBBER, RR. WHEEL DAMPER	6	6	6			
OIL SEAL, 25X40X7		4	41241-435-000	RUBBER, RR. WHEEL DAMPER					6	
BEARING, RADIAL BALL		5	42304-428-000	COLLAR, RR. AXLE	1	1	1	1		
HUB COMP., RR. WHEEL	2.6	6	42312-428-000	COLLAR, RR. WHEEL	1	1	1	1		
RIM, RR. WHEEL	2.3	7	42601-428-000	HUB COMP., RR. WHEEL	1	1	1			
TIRE, RR.	1.0	8	42601-435-010	HUB COMP., RR. WHEEL					1	
		8	42604-413-780	COVER, SPROCKET SIDE DUST	1	1	1	1		
		9	42606-360-305	SPOKE A, RR.	18	18	18			
			426A0-429-000	SPOKE A SET, RR.					18	
			42605-429-305	SPOKE ASSY. A, RR.					18	
		10	42607-360-305	SPOKE B, RR.	18	18	18			

B,DK,DM,E,ED,F1,F2,G1
G2,SA,SD,SW,U
CM



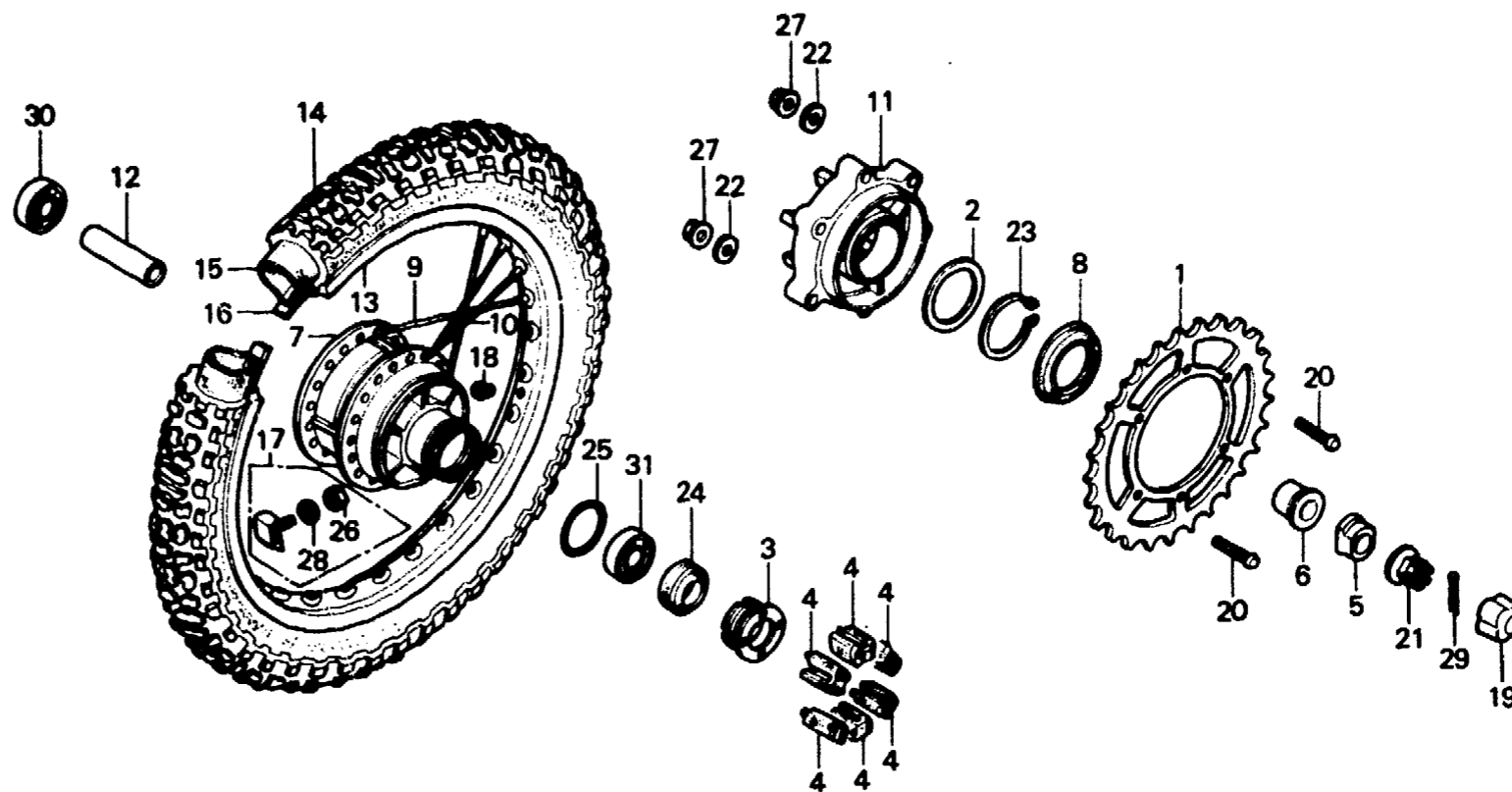
F-11

Rear wheel
(XL250S·Sz·SA·SB)

Roue arrière
(XL250S·Sz·SA·SB)

Hinterrad
(XL250S·Sz·SA·SB)

Rueda trasera
(XL250S·Sz·SA·SB)



B428-25B

Service item	F.R.T.	Ref. No.	Part No.	Description	Reqd. No.					Serial No.	Area code
					XL250						
					S	Sz	SA	Sb	Rc		
			426B0-429-000	SPOKE B SET, RR.					18		B,DK,DM,E,ED,F1,F2,G1 G2,SA,SD,SW,U
			42606-429-305	SPOKE ASSY. B, RR.					18		CM
		11	42612-428-000	FLANGE, FINAL DRIVEN	1	1				5202453	B,DK,DM,E,ED,F1,F2,G2 SA,SW,U
			42612-428-010	FLANGE, FINAL DRIVEN						5204663	CM
										5202454	G1 B,DK,DM,E,ED,F1,F2,G2 SA,SW,U
										5204664	CM SD
			42612-435-010	FLANGE, FINAL DRIVEN					1		
		12	42620-428-000	COLLAR, RR. AXLE DISTANCE	1	1	1	1			
		13	42701-428-003	RIM, RR. WHEEL (2.15X18)	1	1	1				
			42701-429-003	RIM, RR. WHEEL (2.15X18)					1		
		14	42711-428-009	TIRE, RR. (4.60-18 YOKOHAMA)	1		1		1		B,DK,DM,E,ED,F,F1,F2 G,G1,G2,SA,SD,SW,U



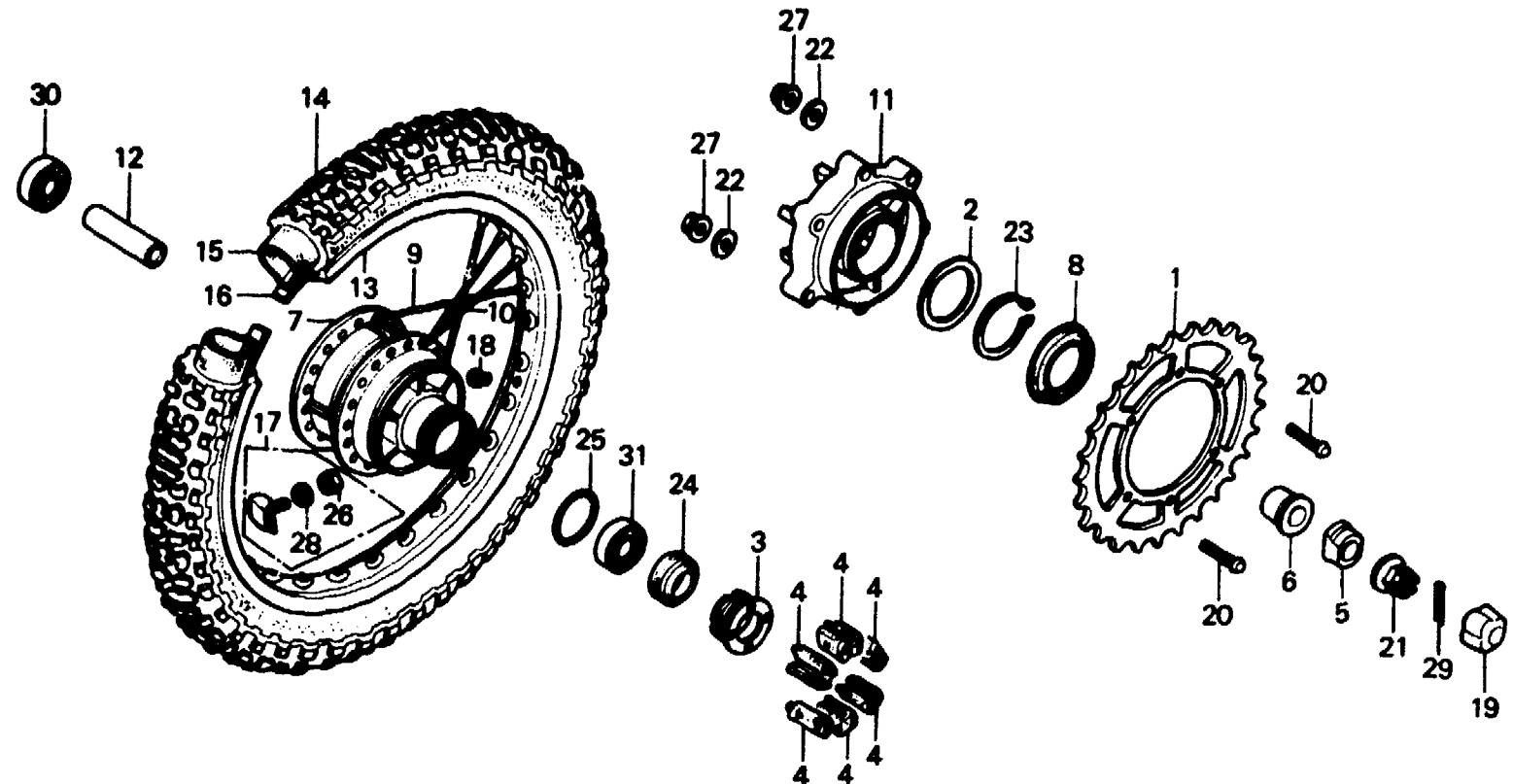
F-11

Rear wheel
(XL250S·Sz·SA·SB)

Roue arrière
(XL250S·Sz·SA·SB)

Hinterrad
(XL250S·Sz·SA·SB)

Rueda trasera
(XL250S·Sz·SA·SB)



B428-25B

Service item	F.R.T.	Ref. No.	Part No.	Description	Reqd. No.					Serial No.	Area code
					S	Sz	SA	Sb	Rc		
			42711-428-671	TIRE, RR. (4.60-18 YOKOHAMA)	1	1	1				CM
			42711-428-731	TIRE, RR. (4.60-18 YOKOHAMA)				1			CM
		15	42712-428-009	TUBE, TIRE (4.60-18 YOKOHAMA)	1	1	1	1			
		16	42713-428-009	FLAP, TIRE (2.15X18 YOKOHAMA)	1	1	1	1			
		17	42715-428-000	STOPPER, BEAD	1	1	1	1			
		18	42717-329-000	CAP, RIM HOLE	1	1	1	1			
		19	44302-428-610	CAP, AXLE NUT	1		1				ED,G,G1,G2,SD
		20	90128-428-000	BOLT, DRIVE SPROCKET FIXING	6					5019448	
			90128-428-010	BOLT, DRIVE SPROCKET FIXING	6					5107479	
					6				5019449		
									5107480		
							6			5202453	B,DK,DM,E,ED,F1,G2,SA
											SW,U
										5204663	CM



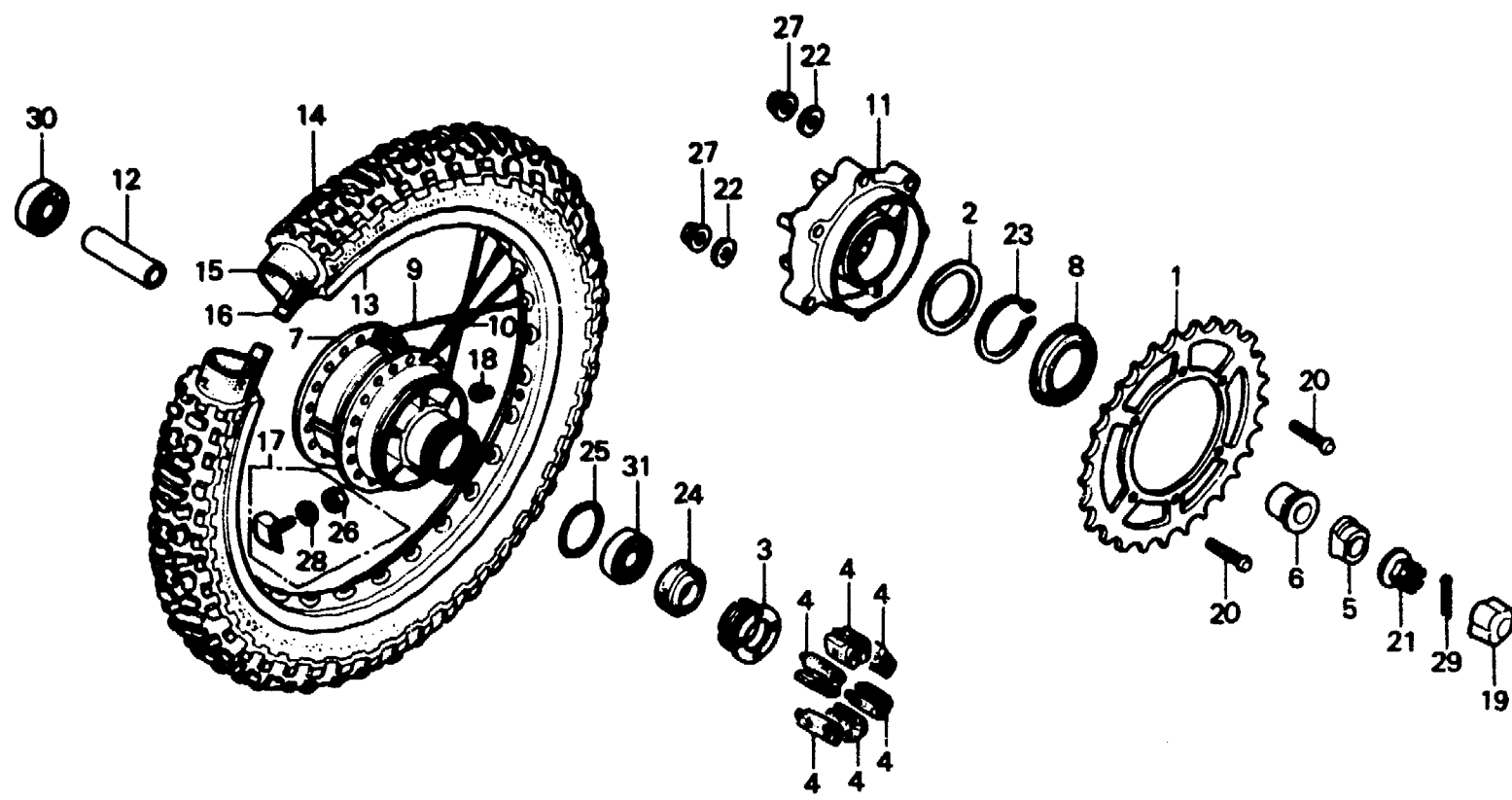
F-11

Rear wheel
(XL250S·SZ·SA·SB)

Roue arrière
(XL250S·SZ·SA·SB)

Hinterrad
(XL250S·SZ·SA·SB)

Rueda trasera
(XL250S·SZ·SA·SB)



B428-25B

Service item	F.R.T.	Ref. No.	Part No.	Description	Reqd. No. XL250					Serial No.	Area code
					S	Sz	SA	Sb	Rc		
			90128-428-020	BOLT, DRIVEN SPROCKET FIXING	6					5202454	B,DK,DM,E,ED,F1,G2,SA SW,U
					6					5204664	CM
		21	90305-369-000	NUT, AXLE, 16MM	1	1	1	1			
		22	90465-422-000	WASHER, THRUST, 8MM	6					5019449 5107480	F2,G1,SD B,CM,DK,DM,E,ED,F1,G2 SA,SW,U
										5202453	B,DK,DM,E,ED,F1,F2,G2 SA,SW,U
			90465-428-000	WASHER, THRUST, 8MM						5204663	CM
										5202454	G1,SD B,DK,DM,E,ED,F1,F2,G2 SA,SW,U
										5204664	CM
		23	90665-329-000	CIRCLIP, EXTERNAL, 65MM	1	1	1	1	6		
		24	91252-428-000	OIL SEAL, 25X40X7	1	1	1	1			

1982.01.10

E

M8



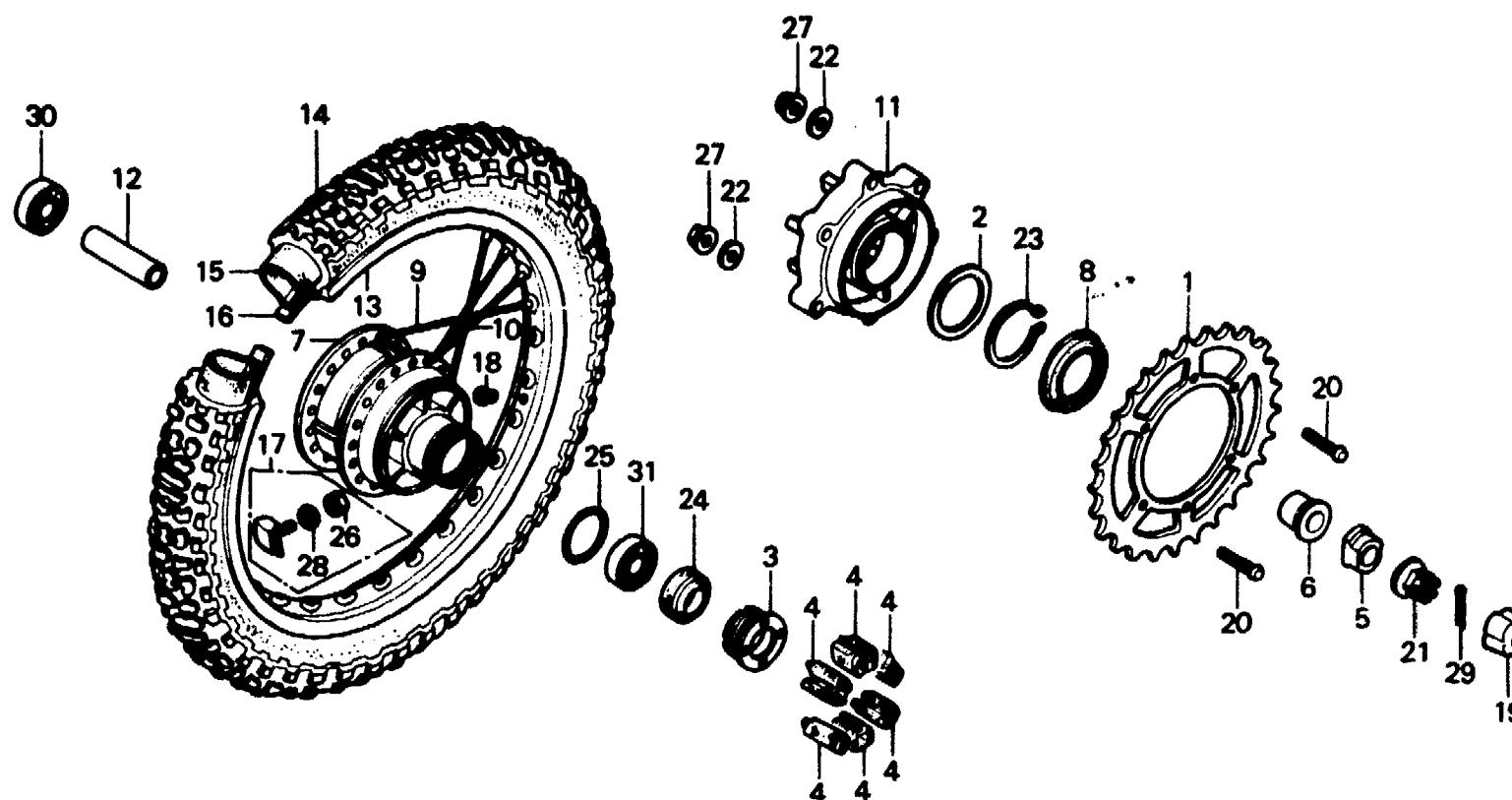
F-11

Rear wheel
(XL250S·Sz·SA·SB)

Roue arrière
(XL250S·Sz·SA·SB)

Hinterrad
(XL250S·Sz·SA·SB)

Rueda trasera
(XL250S·Sz·SA·SB)



B428-25B

Service item	F.R.T.	Ref. No.	Part No.	Description	Reqd. No.				Serial No.	Area code
					S	Sz	SA	SB		
		25	91262-329-010	O-RING, 62X2	1	1	1	1		
		26	94001-08000-05	NUT, HEX., 8MM	1	1	1	1		
		27	94050-08000	NUT, FLANGE, 8MM	6					5019448 5107479
			90309-357-000	NUT, UBS, 8MM	6				5019449 5107480	
			90309-428-731	NUT, FLANGE, 8MM			6			
		28	94111-08000	WASHER, SPRING, 8MM	1	1	1	1		
		29	94201-40300	PIN, SPLIT, 4.0X30	1	1	1	1		
		30	96140-62030-10	BEARING, RADIAL BALL, 6203	1	1	1	1		
		31	96140-63030-10	BEARING, RADIAL BALL, 6303U	1	1	1	1		

M 10

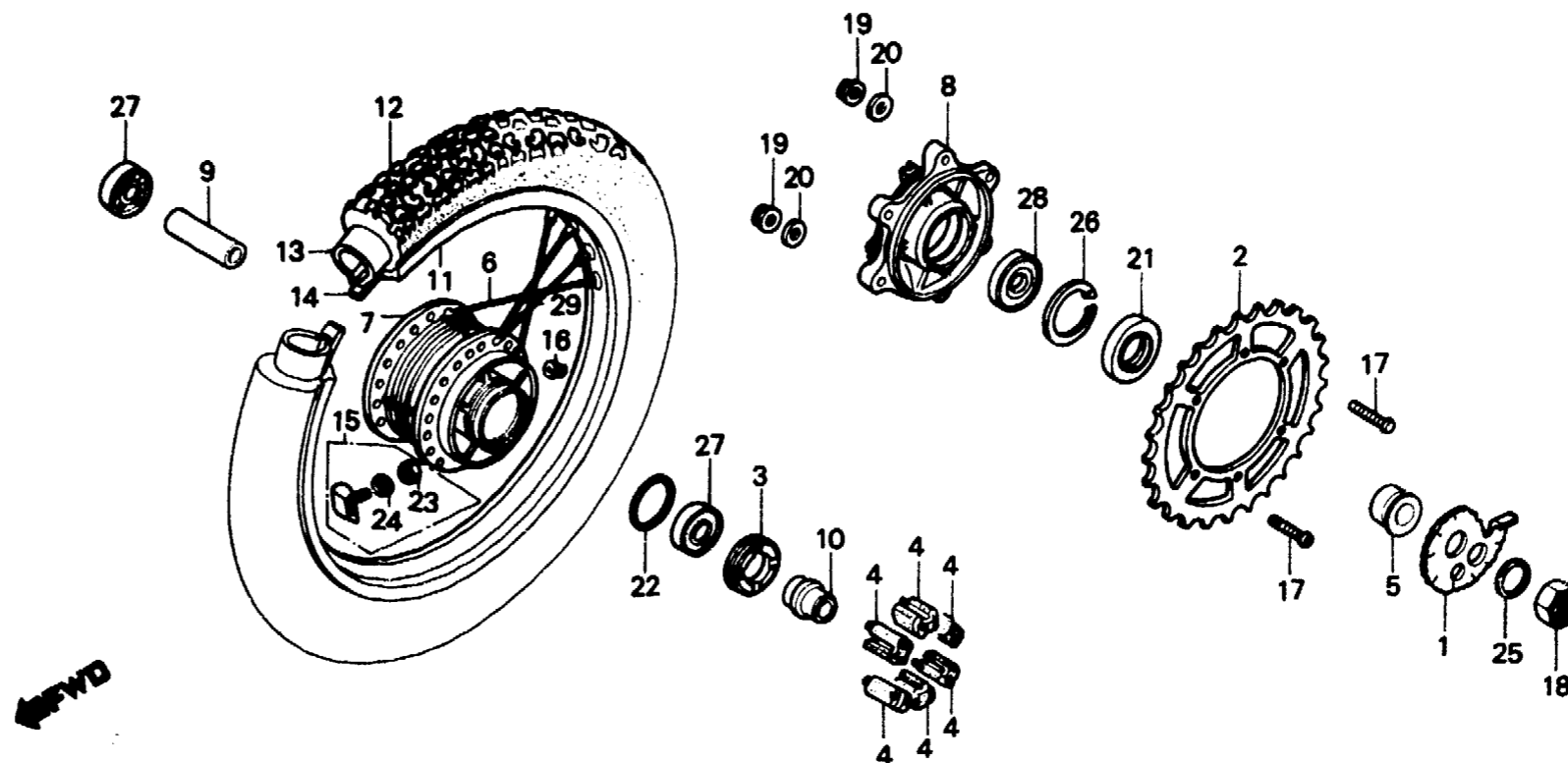
F-11-1

**Rear wheel
(XL250Rc)**

**Roue arrière
(XL250Rc)**

**Hinterrad
(XL250Rc)**

**Rueda trasera
(XL250Rc)**



BKB7-9

Service item	F.R.T.	Ref. No.	Part No.	Description	Reqd. No.				Serial No.	Area code
					S	Sz	SA	Sb		
SPROCKET, FINAL DRIVEN	0.5	1	40545-KB7-000	ADJUSTER, L. CHAIN					1	
COLLAR A, RR. AXLE DISTANCE		2	41201-KB7-670	SPROCKET, FINAL DRIVEN (47T)					1	
BEARING, RADIAL BALL (ADD 0.1 FOR EACH.)		3	41231-MC4-000	RETAINER, RR. WHEEL BEARING					1	
RETAINER, RR. WHEEL BEARING	0.4	4	41241-KB7-000	RUBBER, RR. WHEEL DAMPER					6	
RUBBER, RR. WHEEL DAMPER (ONE OR ALL)		5	42312-MC4-000	COLLAR, RR. WHEEL					1	
HUB COMP., RR. WHEEL	2.6	6	426A0-MC4-000	SPOKE SET (BS8X160.5)					18	
FLANGE, FINAL DRIVEN	0.6	7	42601-KB7-000	HUB COMP., RR. WHEEL					1	
RIM, RR. WHEEL	2.2	8	42611-KB7-000	FLANGE, FINAL DRIVEN					1	
TIRE, RR.	1.0	9	42620-MC4-000	COLLAR A, RR. AXLE DISTANCE					1	
TUBE, TIRE		10	42625-MC4-000	COLLAR B, RR. AXLE DISTANCE					1	
		11	42701-MC4-009	RIM, RR. WHEEL (2.15X17)					1	
		12	42711-MC4-009	TIRE, RR. (4.60-17-4PR) (YOKOHAMA)					1	B,DK,DM,E,ED,F1,F2,G1 G2,IT,SA,SD,SW,U CM
			42711-MC4-671	TIRE, RR. (4.60-17-4PR) (YOKOHAMA)					1	

M 11

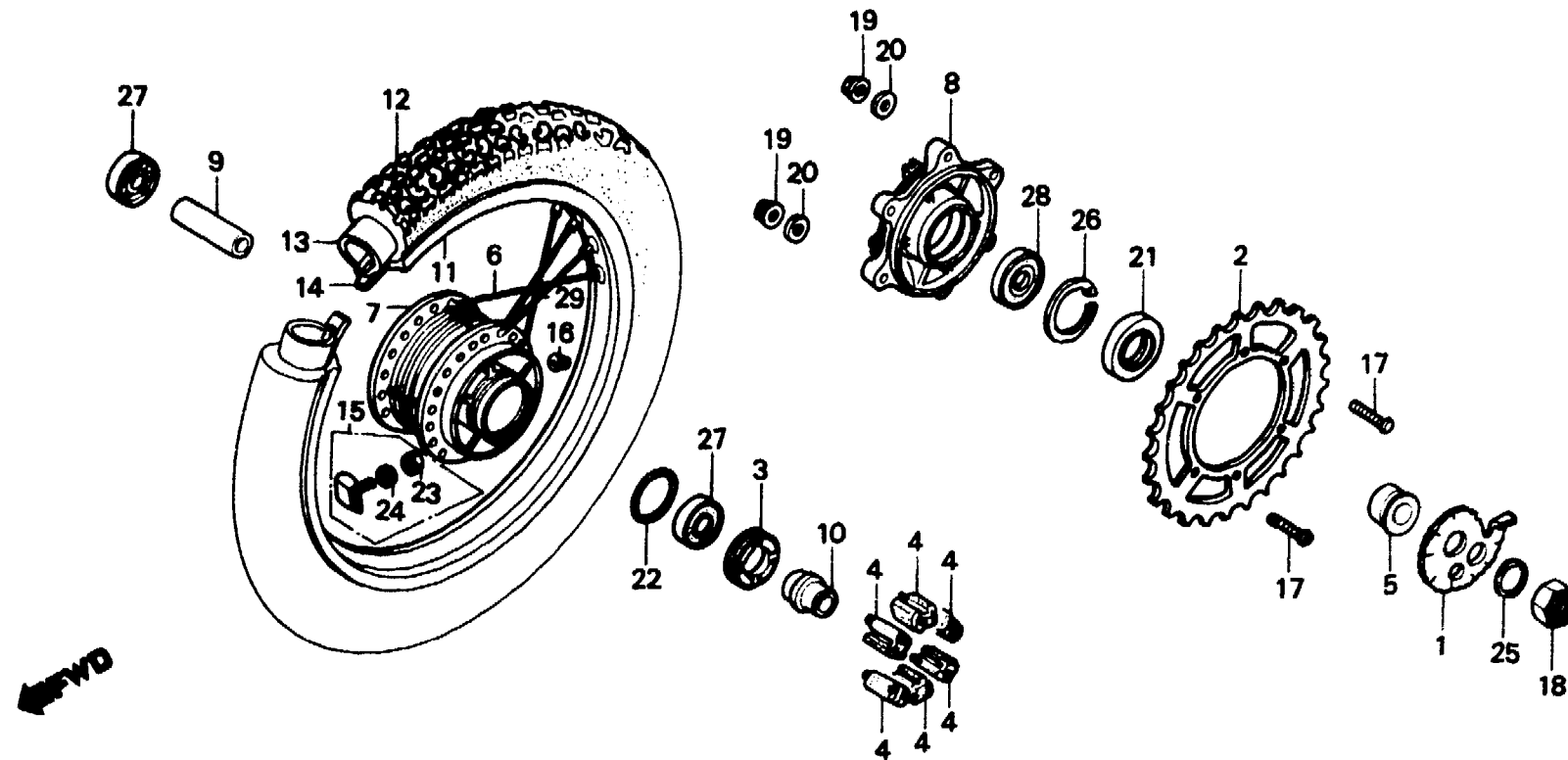
F-11-1

**Rear wheel
(XL250Rc)**

**Roue arrière
(XL250Rc)**

**Hinterrad
(XL250Rc)**

**Rueda trasera
(XL250Rc)**



BKB7-9

Service item	F.R.T.	Ref. No.	Part No.	Description	Reqd. No.				Serial No.	Area code
					S	Sz	SA	Sb		
		13	42712-MC4-009	TUBE, TIRE (4.60-17 YOKOHAMA)						1
		14	42713-102-009	FLAP, TIRE (17 YOKOHAMA)						1
		15	42715-MA0-770	STOPPER, BEAD						1
		16	42717-329-000	CAP, RIM HOLE						1
		17	90128-428-020	BOLT, DRIVEN SPROCKET FIXING						6
		18	90305-MA0-003	NUT, AXLE, 16MM						1
		19	90309-428-731	NUT, FLANGE, 8MM						6
		20	90465-MC4-000	WASHER, 8MM						6
		21	91252-MC4-003	OIL SEAL, 28X47.2X7						1
			91252-MC4-005	OIL SEAL, 28X47.2X7						1
		22	91302-317-700	O-RING, 54X2						1
		23	94001-08000-05	NUT, HEX., 8MM						1
		24	94111-08000	WASHER, SPRING, 8MM						1
		25	94111-16000	WASHER, SPRING, 16MM						1

M 12

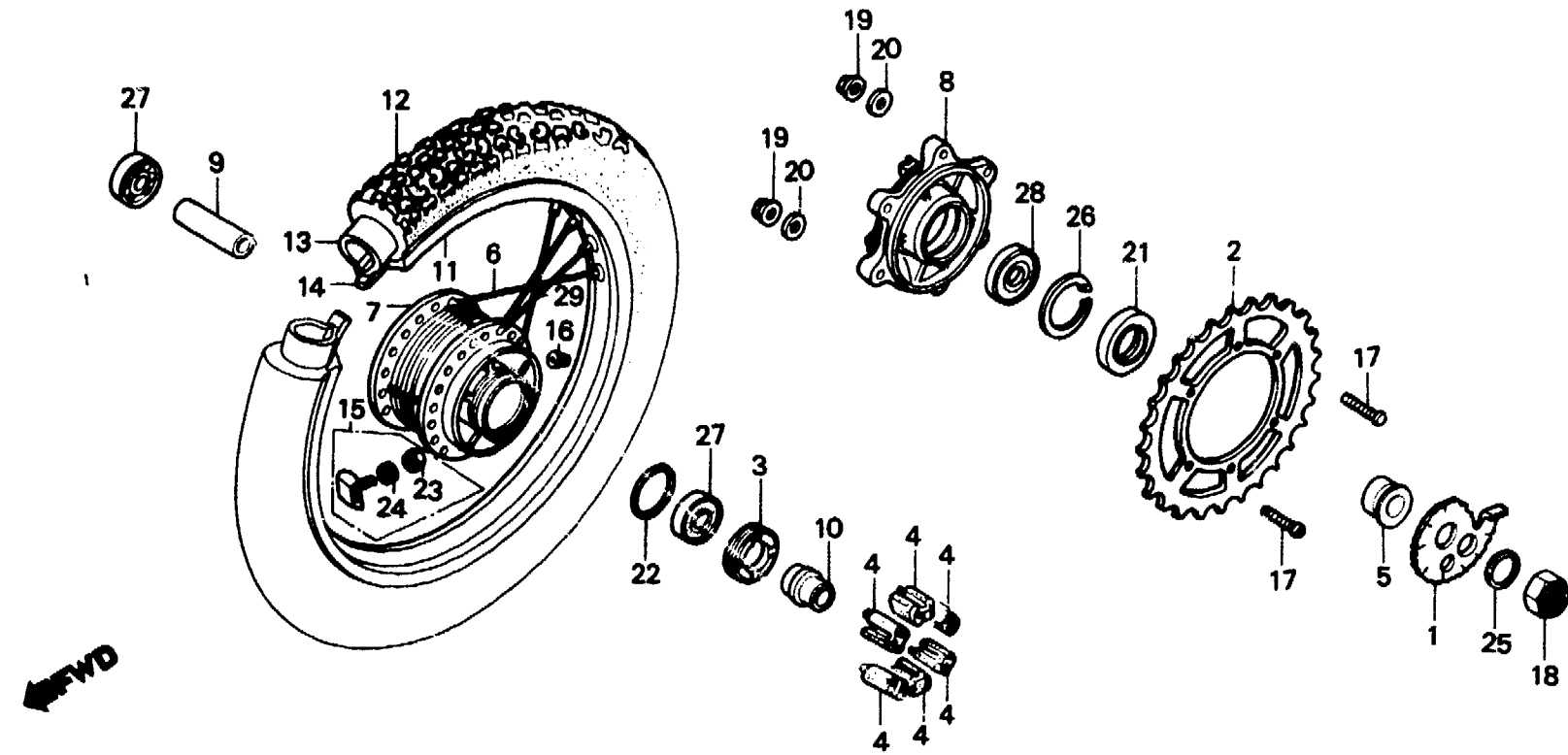
F-11-1

**Rear wheel
(XL250Rc)**

**Roue arrière
(XL250Rc)**

**Hinterrad
(XL250Rc)**

**Rueda trasera
(XL250Rc)**



BK87-9

Service item	F.R.T.	Ref. No.	Part No.	Description	Reqd. No.				Serial No.	Area code
					S	Sz	SA	Ss		
		26	94520-47000	CIRCLIP, INTERNAL, 47					1	
		27	96140-62030-10	BEARING, RADIAL BALL, 6203					2	
		28	96140-62040-10	BEARING, RADIAL BALL, 6204U					1	
		29	97820-69160-00	SPOKE SET, BS8X160					18	

1982.01.10

E

M12



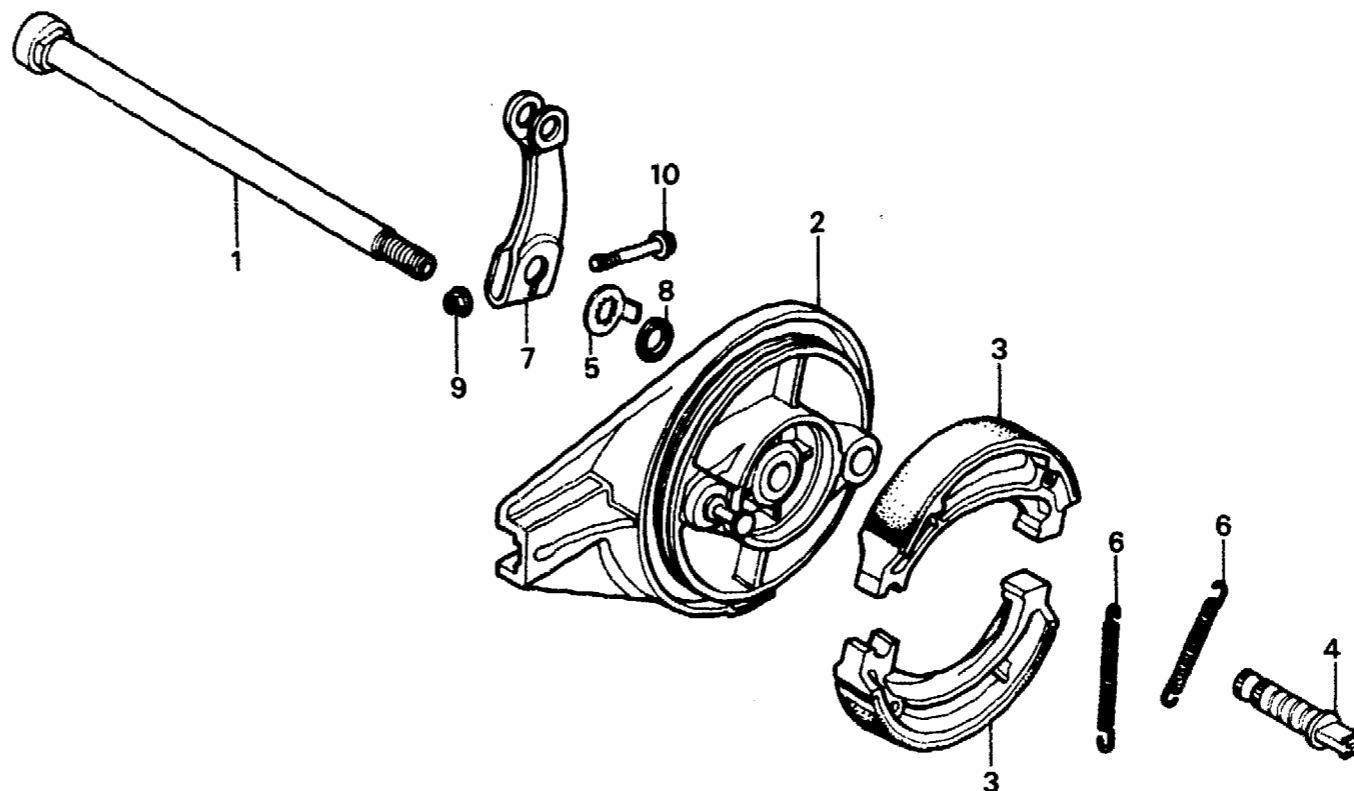
F-12

Rear brake panel
(XL250S · Sz · SA)

Plateau de frein arrière
(XL250S · Sz · SA)

Hinterradbremssankerplatte
(XL250S · Sz · SA)

Panel de freno trasero
(XL250S · Sz · SA)



B428-26

Service item	F.R.T.	Ref. No.	Part No.	Description	Reqd. No.					Serial No.	Area code
					S	Sz	SA	Sb	Rc		
AXLE, RR. WHEEL	0.3	1	42301-428-000	AXLE, RR. WHEEL	1	1	1				
PANEL COMP., RR. BRAKE	0.5	2	43100-428-000	PANEL COMP., RR. BRAKE	1	1	1				
INC. RELATIVE PART		3	43120-428-013	SHOE COMP., BRAKE	2	2	2				
SHOE COMP., BRAKE			43120-428-015	SHOE COMP., BRAKE	2	2	2				
(ONE OR ALL)		4	43141-400-000	CAM, RR. BRAKE	1						CM
ARM, RR. BRAKE	0.1				1					5018958	DK,DM,E,ED,F,G,SA,SW
			43141-400-010	CAM, RR. BRAKE	1					5107114	U
										5018959	DK,DM,E,ED,F,G,SA,SW
										5107115	U
		5	43145-400-000	INDICATOR, RR. BRAKE	1	1	1				
		6	43151-110-000	SPRING, BRAKE SHOE	2	2	2				
		7	43410-428-000	ARM, RR. BRAKE	1	1	1				
		8	45134-250-000	DUST SEAL, BRAKE CAM	1	1	1				
		9	94050-06000	NUT, FLANGE, 6MM	1	1	1				
		10	95700-06025-00	BOLT, FLANGE, 6X25	1	1	1				

M 14

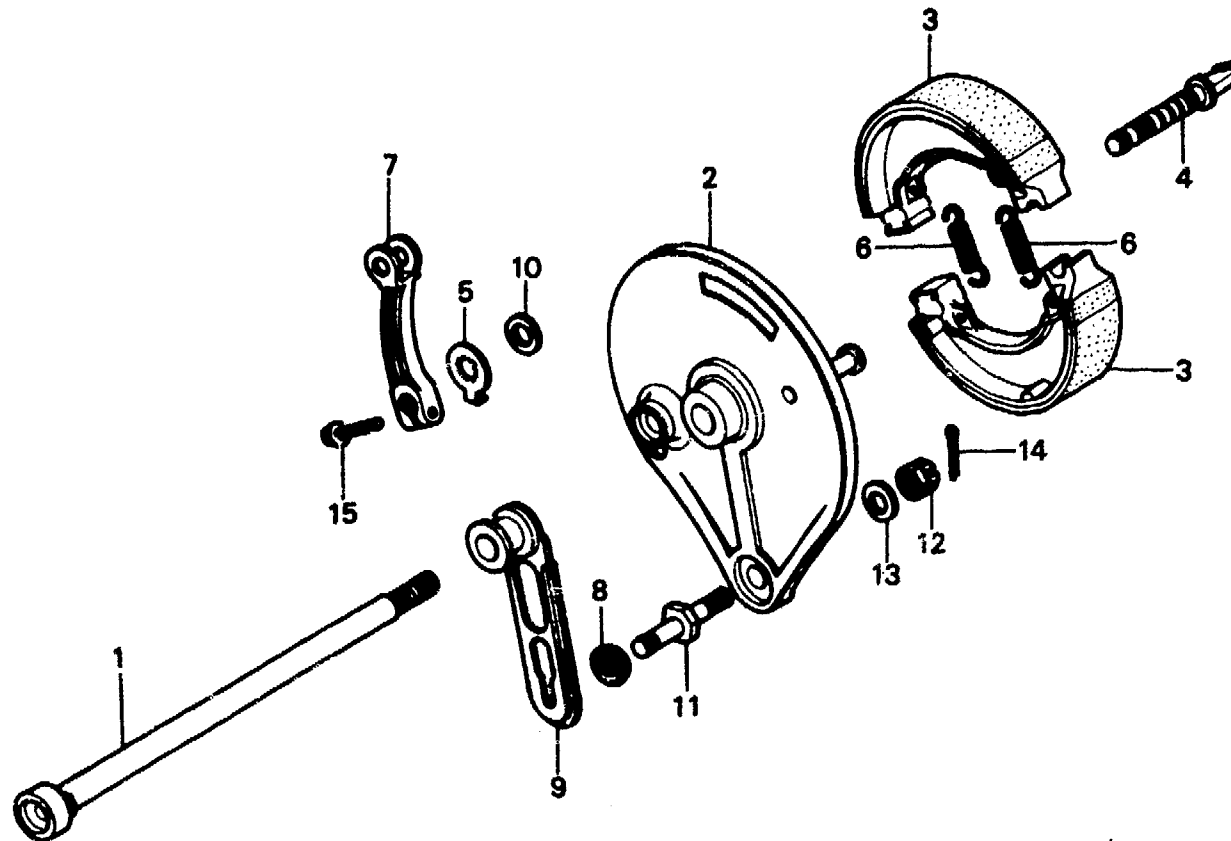
F-12-1

**Rear brake panel
(XL250Sb)**

**Plateau de frein arrière
(XL250Sb)**

**Hinterradbremssankerplatte
(XL250Sb)**

**Panel de freno trasero
(XL250Sb)**



B429-26B

Service item	F.R.T.	Ref. No.	Part No.	Description	Reqd. No.				Serial No.	Area code
					S	Sz	SA	S _B		
AXLE, RR. WHEEL	0.3	1	42301-428-000	AXLE, RR. WHEEL					1	
STOPPER COMP., BRAKE ARM		2	43100-435-000	PANEL COMP., RR. BRAKE					1	
PANEL COMP., RR. BRAKE	0.5	3	43120-429-000	SHOE COMP., RR. BRAKE					2	
INC. RELATIVE PART		4	43141-399-010	CAM, RR. BRAKE					1	
SHOE COMP., RR. BRAKE		5	43145-130-650	INDICATOR, RR. BRAKE					1	
(ONE OR ALL)										
ARM, RR. BRAKE	0.1	6	43151-329-000	SPRING, RR. BRAKE SHOE					2	
INC. RELATIVE PART		7	43410-428-840	ARM, RR. BRAKE					1	
		8	43434-429-000	RUBBER COMP., STOPPER ARM CUSHION					1	
		9	43435-429-000	STOPPER COMP., BRAKE ARM					1	
		10	45134-250-000	DUST SEAL, BRAKE CAM					1	
		11	90127-429-000	BOLT, RR. BRAKE STOPPER					1	
		12	94012-10200-0S	NUT, CASTLE, 10MM					1	
		13	94102-10000	WASHER, PLAIN, 10MM					1	
		14	94201-20200	PIN, SPLIT, 2.0X20					1	
		15	95700-06025-00	BOLT, FLANGE, 6X25					1	

1982.01.10

E

M14

M 15

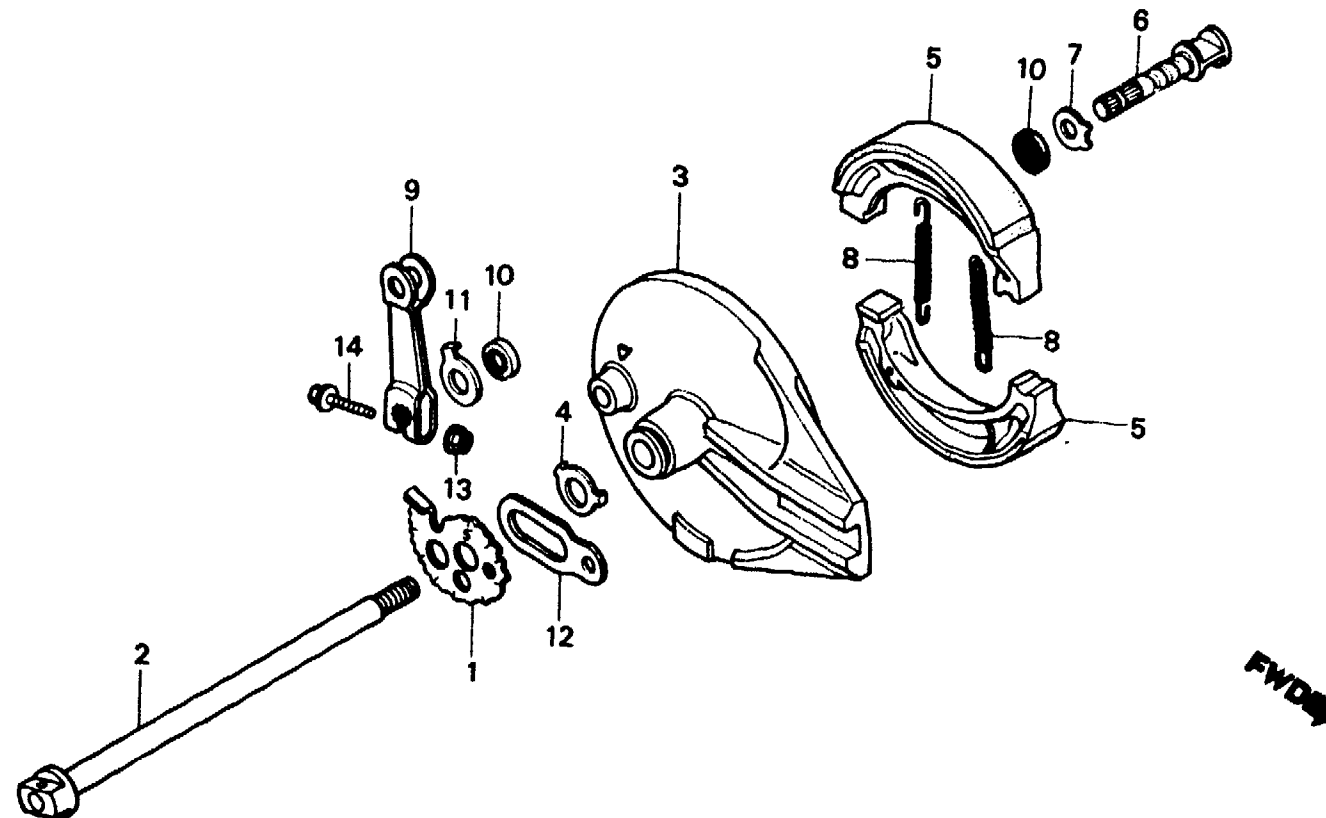
F-12-2

**Rear brake panel
(XL250Rc)**

**Plateau de frein arrière
(XL250Rc)**

**Hinterradbremssankerplatte
(XL250Rc)**

**Panel de freno trasero
(XL250Rc)**



BKB7-10

Service item	F.R.T.	Ref. No.	Part No.	Description	Reqd. No.					Serial No.	Area code
					S	Sz	SA	Sb	Rc		
AXLE, RR. WHEEL	0.3	1	40544-KB7-000	ADJUSTER, R. CHAIN					1		
PANEL COMP., RR. BRAKE	0.5	2	42301-MC4-000	AXLE, RR. WHEEL					1		
INC. RELATIVE PART		3	43100-KB7-000	PANEL COMP., RR. BRAKE					1		
SHOE COMP., BRAKE		4	43104-MC4-000	WASHER, RR. BRAKE PANEL					1		
(ONE OR ALL)		5	43120-428-013	SHOE COMP., BRAKE					2		
ARM, RR. BRAKE	0.2		43120-428-015	SHOE COMP., BRAKE					2		B, CM, DK, DM, E, ED, F1, F2 G1, G2, IT, SA, SD, SW
INC. RELATIVE PART		6	43141-KB7-000	CAM, RR. BRAKE					1		
		7	43142-KB7-000	SEAT, RR. BRAKE CAM					1		
		8	43151-110-000	SPRING, BRAKE SHOE					2		
		9	43410-MC4-000	ARM, RR. BRAKE					1		
		10	45134-KB7-005	DUST SEAL, BRAKE CAM					2		
		11	45145-086-720	INDICATOR, FR. WHEEL					1		
		12	52162-MA0-000	STOPPER, RR. AXLE					1		
		13	94050-06000	NUT, FLANGE, 6MM					1		

M 16

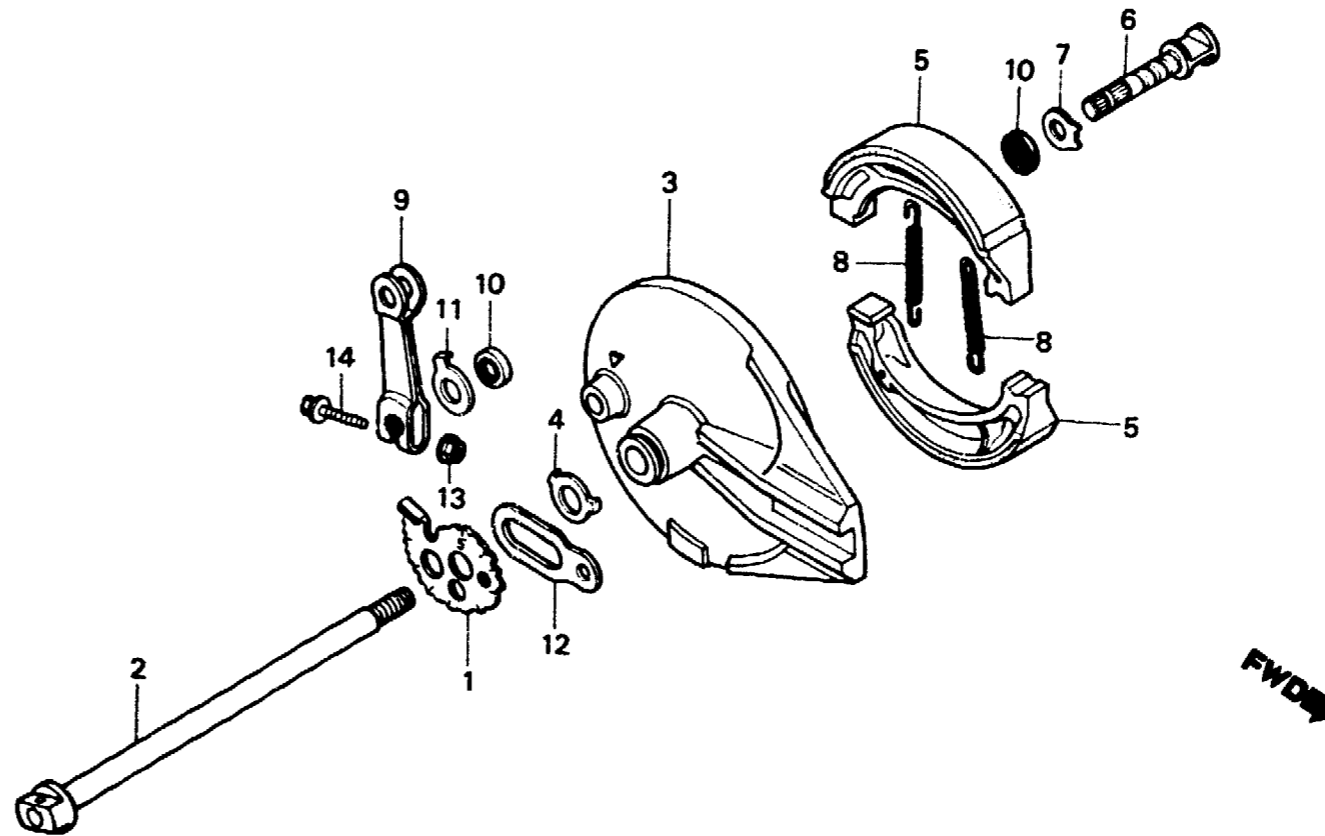
F-12-2

**Rear brake panel
(XL250Rc)**

**Plateau de frein arrière
(XL250Rc)**

**Hinterradbremssankerplatte
(XL250Rc)**

**Panel de freno trasero
(XL250Rc)**



BKB7-10

Service item	F.R.T.	Ref. No.	Part No.	Description	Reqd. No.					Serial No.	Area code
					S	Sz	SA	Sa	Rc		
		14	95700-06032-00	BOLT, FLANGE, 6X32					1		

1982.01.10

E

M16

N 1

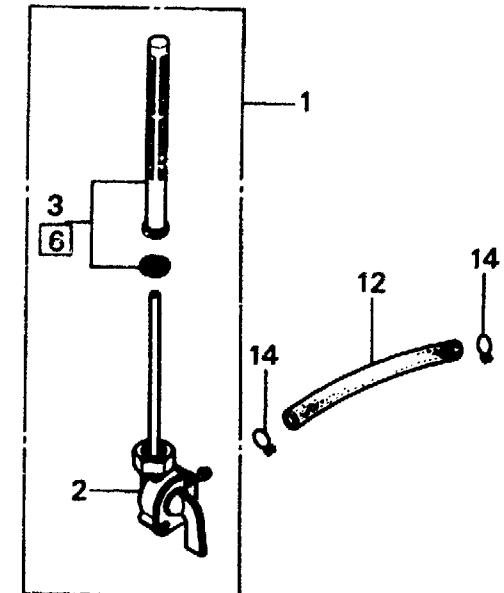
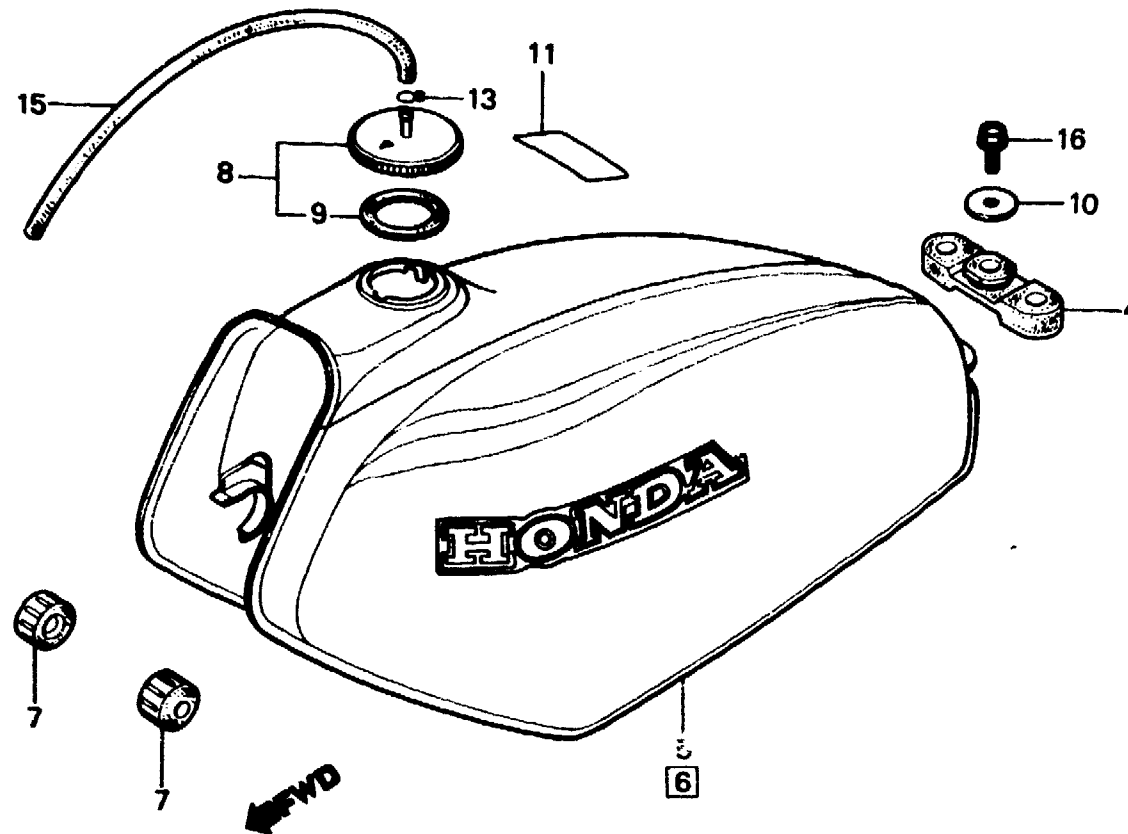
F-13

**Fuel tank
(XL250S·SZ·SA·SB)**

**Réservoir d'essence
(XL250S·SZ·SA·SB)**

**Benzintank
(XL250S·SZ·SA·SB)**

**Tanque de combustible
(XL250S·SZ·SA·SB)**



B428-27E

Service item	F.R.T.	Ref. No.	Part No.	Description	Reqd. No.					Serial No.	Area code
					S	Sz	SA	Sb	Rc		
COCK ASSY., FUEL	0.2	1	16950-385-702	COCK ASSY., FUEL	1	1	1	1			
INC. RELATIVE PART		2	16951-385-702	BODY COMP., COCK	1	1	1	1			
TANK ASSY., FUEL	0.3	3	16952-388-015	SCREEN SET, FUEL STRAINER	1	1	1	1			
		4	17509-428-000	RUBBER, RR. TANK	1	1	1	1			
		5	17520-428-000ZA	TANK ASSY., FUEL *R-23*	1						
			17520-428-000ZB	TANK ASSY., FUEL *PB-104*	1						
			17520-428-000ZC	TANK ASSY., FUEL *NH-24*	1						
			17520-428-770ZA	TANK SUB ASSY., FUEL *R-23*		1					
		6	17540-428-870ZA	TANK SET, FUEL *R-33*					1		CM
			17540-428-920ZA	TANK SET, FUEL *R-23*					1		B,DK,DM,E,ED,F1,F2,G1
			17540-428-920ZB	TANK SET, FUEL *NH-24*					1		G2,SA,SD,SW,U
											B,DK,DM,E,ED,F1,F2,G1
											G2,SA,SD,SW,U

1982.01.10

E

N1

N 2

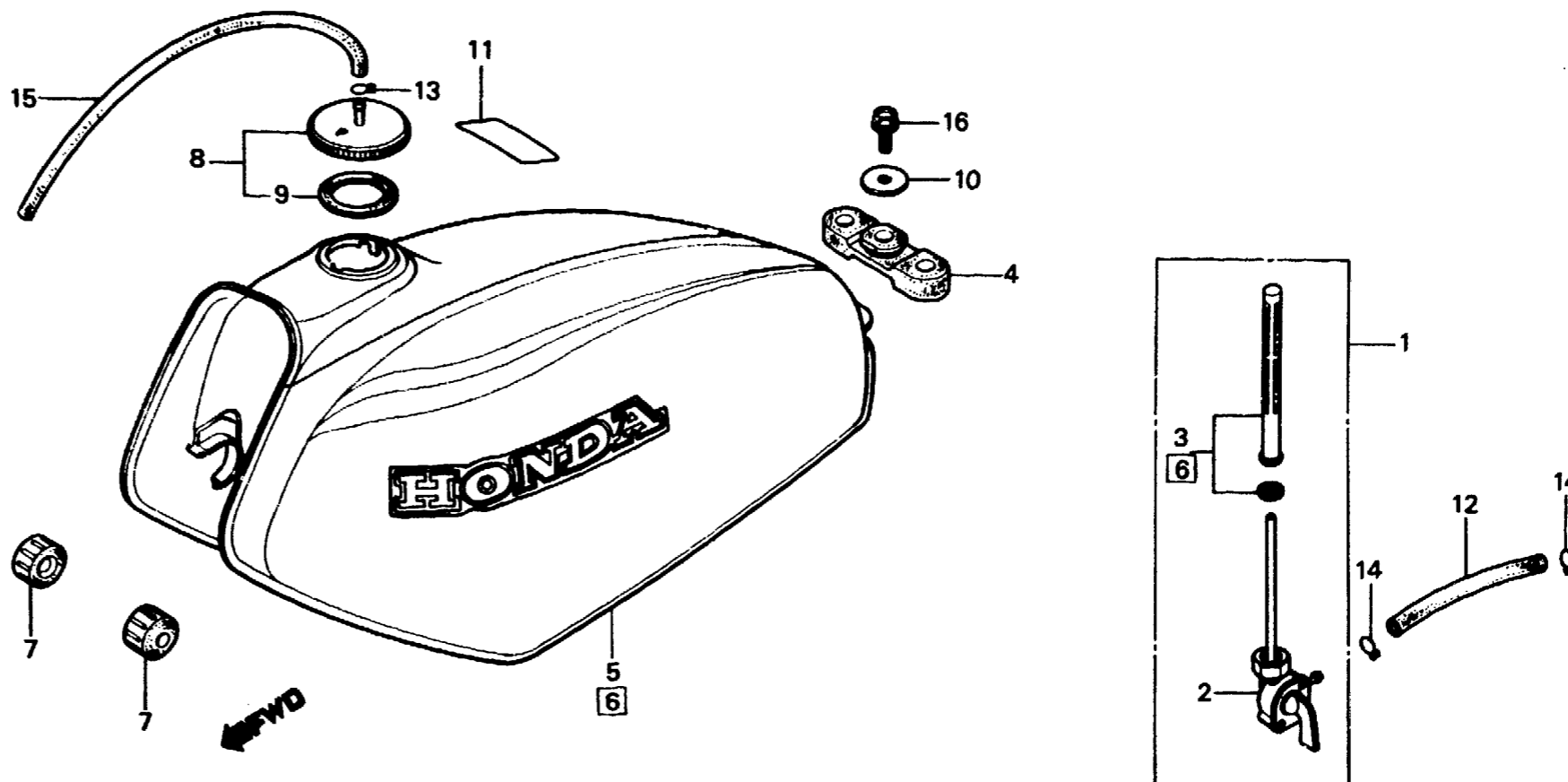
F-13

**Fuel tank
(XL250S·SZ·SA·SB)**

**Réservoir d'essence
(XL250S·SZ·SA·SB)**

**Benzintank
(XL250S·SZ·SA·SB)**

**Tanque de combustible
(XL250S·SZ·SA·SB)**



B428-27E

Service item	F.R.T.	Ref. No.	Part No.	Description	Reqd. No.					Serial No.	Area code
					S	Sz	SA	Sb	Rc		
			17540-428-730ZA	TANK SET, FUEL *R-110*						1	CM
			175A1-428-830ZA	TANK SET, FUEL *R-110*						1	B,DK,DM,E,ED,F1,F2,G1 G2,SA,SD,SW,U
			175A1-428-830ZB	TANK SET, FUEL *NH-104M-U*						1	B,DK,DM,E,ED,F1,F2,G1 G2,SA,SD,SW,U
			175A1-428-830ZC	TANK SET, FUEL *NH-111*						1	B,DK,DM,E,ED,F1,F2,G1 G2,SA,SD,SW,U
		7	17611-286-000	CUSHION, FUEL TANK FR.	2	2	2	2			
		8	17620-428-000	CAP COMP., FUEL FILLER	1	1	1				
			17620-176-771	CAP COMP., FUEL FILLER						1	
		9	17631-329-000	PACKING, FUEL FILLER CAP	1	1	1				
			17632-176-770	PACKING, FUEL FILLER CAP						1	
		10	64347-001-000	WASHER, FR. COVER SETTING	1	1					

1982.01.10

E

N2

N 3

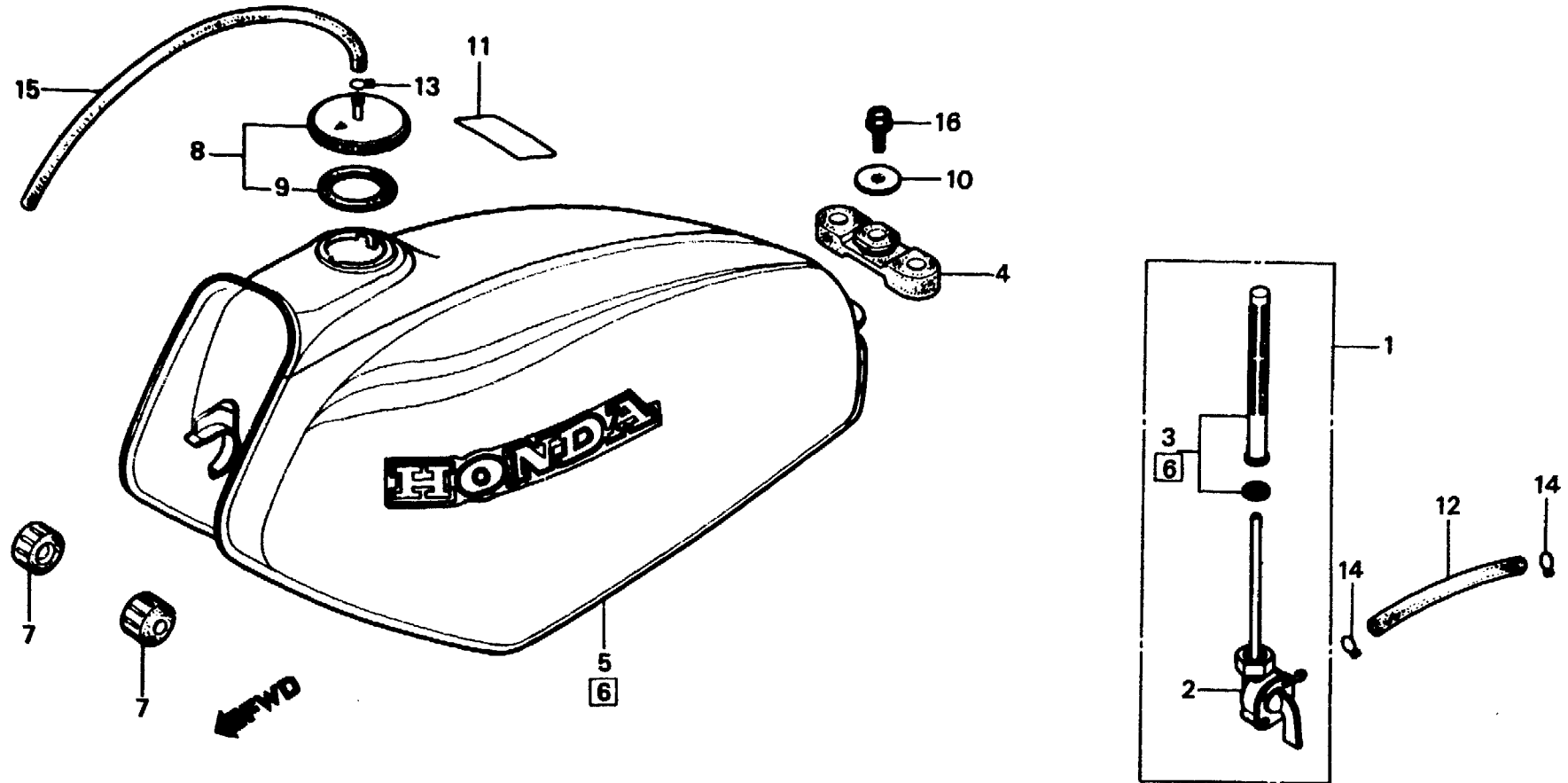
F-13

**Fuel tank
(XL250S·SZ·SA·SB)**

**Réservoir d'essence
(XL250S·SZ·SA·SB)**

**Benzintank
(XL250S·SZ·SA·SB)**

**Tanque de combustible
(XL250S·SZ·SA·SB)**



B428-27E

Service item	F.R.T.	Ref. No.	Part No.	Description	Reqd. No.					Serial No.	Area code
					S	Sz	SA	Sb	Rc		
			90136-428-870	WASHER, TANK SETTING				1	1		
		11	87560-375-680A	MARK, DRIVE CAUTION	1	1	1				B,CM,DK,DM,E,ED,G,G1 G2,SA,SD,SW,U
			87560-375-680B	MARK, DRIVE CAUTION	1	1	1				B,CM,DK,DM,E,ED,G,G1 G2,SA,SD,SW,U
			87560-428-620ZA	MARK, DRIVE CAUTION (FRENCH)	1	1			1		CM,F
			87560-428-620ZB	MARK, DRIVE CAUTION (FRENCH) *NH-1*	1	1		1			F1,F2
			87560-181-760ZA	MARK, DRIVE CAUTION *NH-0*					1		CM
			87560-KB1-620ZA	MARK, DRIVE CAUTION *NH-1*					1		F1,F2
			87560-KB1-620ZA	MARK, DRIVE CAUTION *NH-0 (FRENCH)					1		B,CM,DK,DM,E,ED,G1,G2 SA,SD,SW,U
		12	95001-55205-40	TUBE, FUEL, 5.5X205	1					5008588	
			95001-55200-40	TUBE, FUEL, 5.3X200	1					5008589	5025488
						1					5202031
							1				CM
							1				SD

1982.01.10

E

N3

N 4

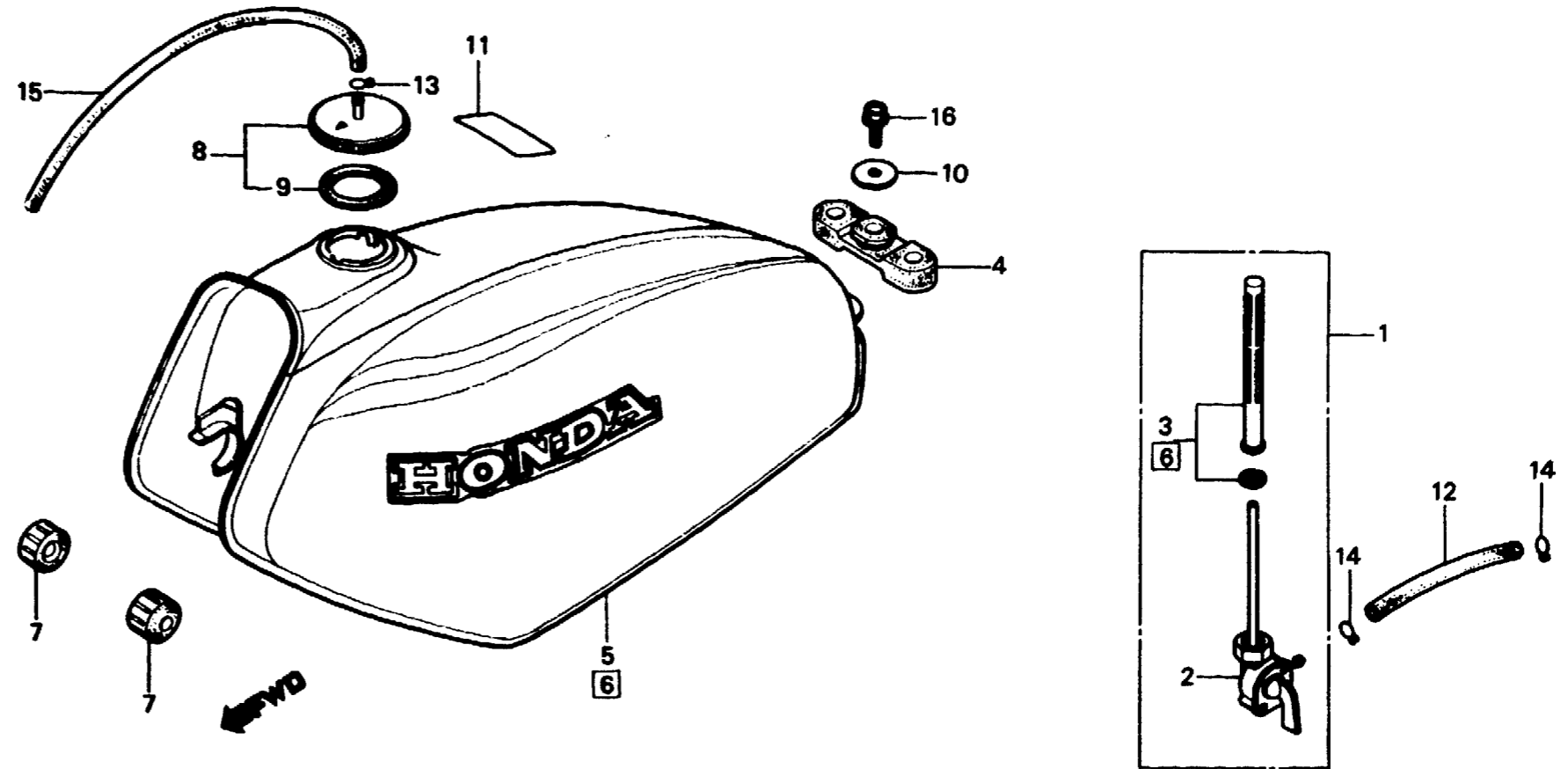
F-13

**Fuel tank
(XL250S·SZ·SA·SB)**

**Réservoir d'essence
(XL250S·SZ·SA·SB)**

**Benzintank
(XL250S·SZ·SA·SB)**

**Tanque de combustible
(XL250S·SZ·SA·SB)**



B428-27E

Service item	F.R.T.	Ref. No.	Part No.	Description	Reqd. No.					Serial No.	Area code
					S	Sz	SA	Sa	Rc		
			91461-428-000	TUBE, FUEL, 5.3X230	1					5025489	B,DK,DM,E,ED,F1,F2,G1
											G2,SA,SW,U
		13	95002-50000	CLIP C9, TUBE			1			5202032	CM
		14	95002-02100	CLIP B10, TUBE			1				CM,SD
		15	95005-50300-30	TUBE, 5X300	2	2	2	2			
			17521-429-000	TUBE, FUEL CAP BREATHER	1	1					
		16	95700-06012-00	BOLT, FLANGE, 6X12			1	1	1		

1982.01.10

E

N4

N 5

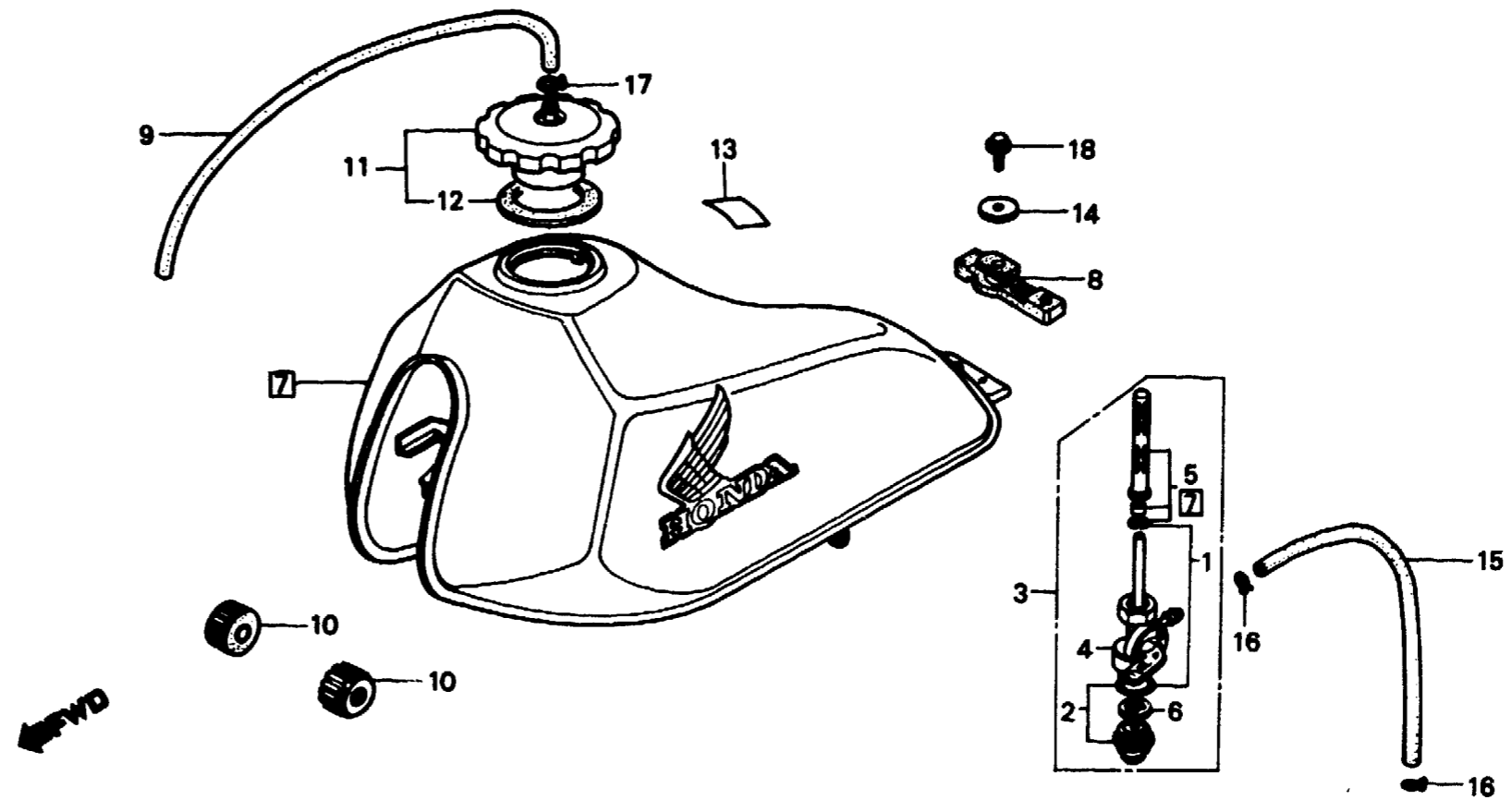
F-13-1

**Fuel tank
(XL250Rc)**

**Réservoir d'essence
(XL250Rc)**

**Benzintank
(XL250Rc)**

**Tanque de combustible
(XL250Rc)**



BKB7-11

Service item	F.R.T.	Ref. No.	Part No.	Description	Reqd. No.					Serial No.	Area code
					XL250						
					S	Sz	SA	Se	Rc		
COCK ASSY., FUEL	0.2	1	16080-471-831	O-RING					1		
BODY COMP., COCK		2	16081-471-831	CUP, FUEL STRAINER					1		
SCREEN SET, FUEL STRAINER		3	16950-KB7-005	COCK ASSY., FUEL					1		
CUP, FILTER	0.1	4	16951-KB7-005	BODY COMP., COCK					1		
INC. RELATIVE PART		5	16952-449-751	SCREEN SET, FUEL STRAINER					1		
		6	16959-471-831	CUP, FILTER					1		
		7	175A1-KB7-000ZA	TANK SET, FUEL *R-110*					1		B,DK,DM,E,ED,F1,F2,G1
			175B1-KB7-000ZA	TANK SET, FUEL *NH-24*					1		G2,IT,SA,SD,SW,U
			175C1-KB7-000ZA	TANK SET, FUEL *NH-104M-U*					1		B,DK,DM,E,ED,F1,F2,G1
		8	17503-KB7-000	RUBBER, FUEL TANK RR.					1		G2,IT,SA,SD,SW,U
		9	17521-429-000	TUBE, FUEL CAP BREATHER					1		
		10	17611-429-000	CUSHION, FUEL TANK FR.					2		

1982.01.10

E

N5

N 6

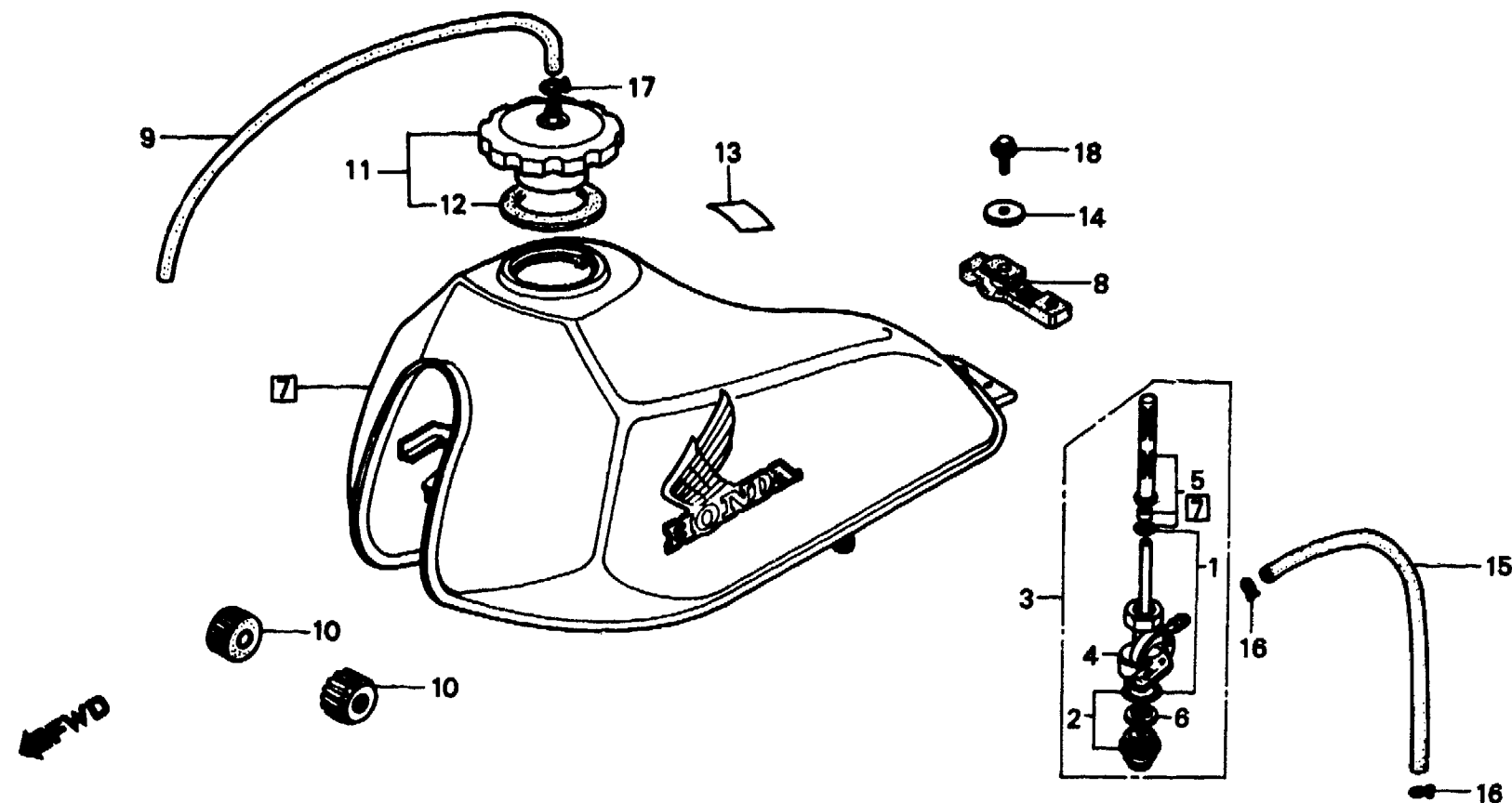
F-13-1

**Fuel tank
(XL250Rc)**

**Réservoir d'essence
(XL250Rc)**

**Benzintank
(XL250Rc)**

**Tanque de combustible
(XL250Rc)**



BKB7-11

Service item	F.R.T.	Ref. No.	Part No.	Description	Reqd. No.				Serial No.	Area code
					S	Sz	SA	Ss		
		11	17620-435-730	CAP COMP., FUEL TANK					1	
		12	17632-435-730	PACKING, FUEL FILLER CAP					1	
		13	87560-KB1-620ZB	MARK, DRIVE CAUTION *NH-1*					1	F1,F2
			87560-181-760ZA	MARK, DRIVE CAUTION *NH-1*					1	B,CM,DK,DM,E,ED,G1,G2 IT,SA,SD,SW,U
		14	90136-428-870	WASHER, TANK SETTING					1	
		15	91461-KB7-000	TUBE, FUEL, 5.3X195					1	
		16	95002-02100	CLIP B10, TUBE					2	
		17	95002-50000	CLIP C9, TUBE					1	
		18	95700-06012-00	BOLT, FLANGE, 6X12					1	

1982.01.10

E

N6