

I 12

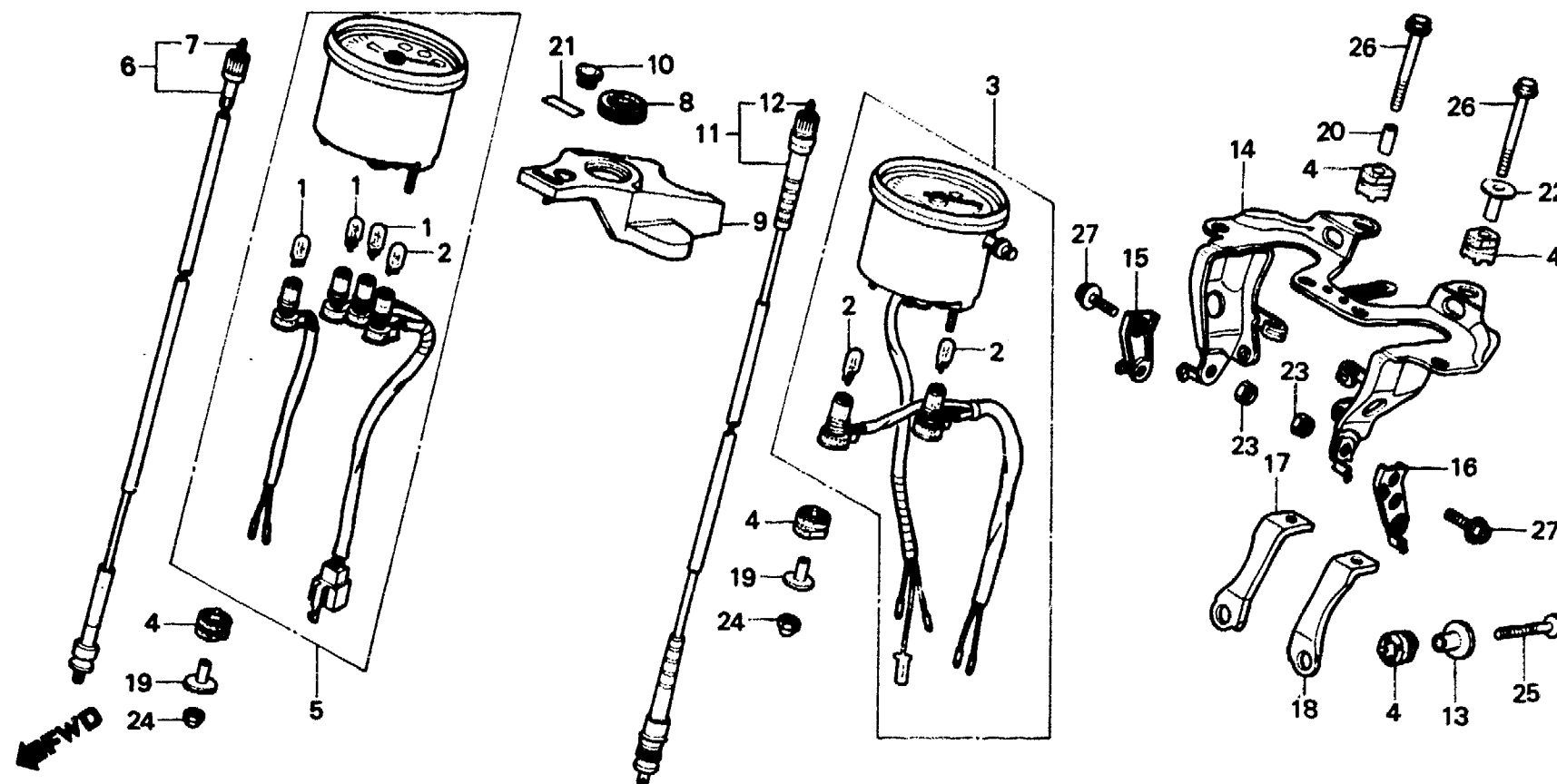
F-2-4

Meter • Headlight stay
(XL250Rc-B,DK,DM,E,ED,F1,
F2,G1,G2,IT,SA,SD,SW,U)

Compteurs • Appui de phare
(XL250Rc-B,DK,DM,E,ED,F1,
F2,G1,G2,IT,SA,SD,SW,U)

Messer • Scheinwerferstütze
(XL250Rc-B,DK,DM,E,ED,F1,
F2,G1,G2,IT,SA,SD,SW,U)

Medidor • Tirante de faro
(XL250Rc-B,DK,DM,E,ED,F1,
F2,G1,G2,IT,SA,SD,SW,U)



BMC4-25

Service item	F.R.T.	Ref. No.	Part No.	Description	Reqd. No.				Serial No.	Area code
					S	Sz	SA	Sb		
		9	37622-KB7-000	COVER, IGNITION SWITCH					1	B,DK,DM,E,F1,F2,IT,SA SW,U
			37622-KB7-610	COVER, IGNITION SWITCH					1	ED,G1,G2,SD
		10	37623-KB7-600	CAP, IGNITION SWITCH COVER					1	B,DK,DM,E,F1,F2,IT,SA SW,U
		11	44830-KB7-000	CABLE ASSY., SPEEDOMETER					1	B,DK,DM,E,ED,F1,F2,G1 G2,IT,SA,SD,SW,U
		12	44831-KB7-000	CABLE, INNER					1	B,DK,DM,E,ED,F1,F2,G1 G2,IT,SA,SD,SW,U
		13	50324-425-010	COLLAR, 6.3X13					2	B,DK,DM,E,ED,F1,F2,G1 G2,IT,SA,SD,SW,U
		14	61310-KB7-000	STAY COMP., HEADLIGHT CASE					1	B,DK,DM,E,ED,F1,F2,G1 G2,IT,SA,SD,SW,U
		15	61311-KB7-770	STAY, R. HEADLIGHT					1	IT
		16	61312-KB7-770	STAY, L. HEADLIGHT					1	IT
		17	61315-KB7-000	SUB STAY, R. HEADLIGHT					1	B,DK,DM,E,ED,F1,F2,G1 G2,IT,SA,SD,SW,U

I 13

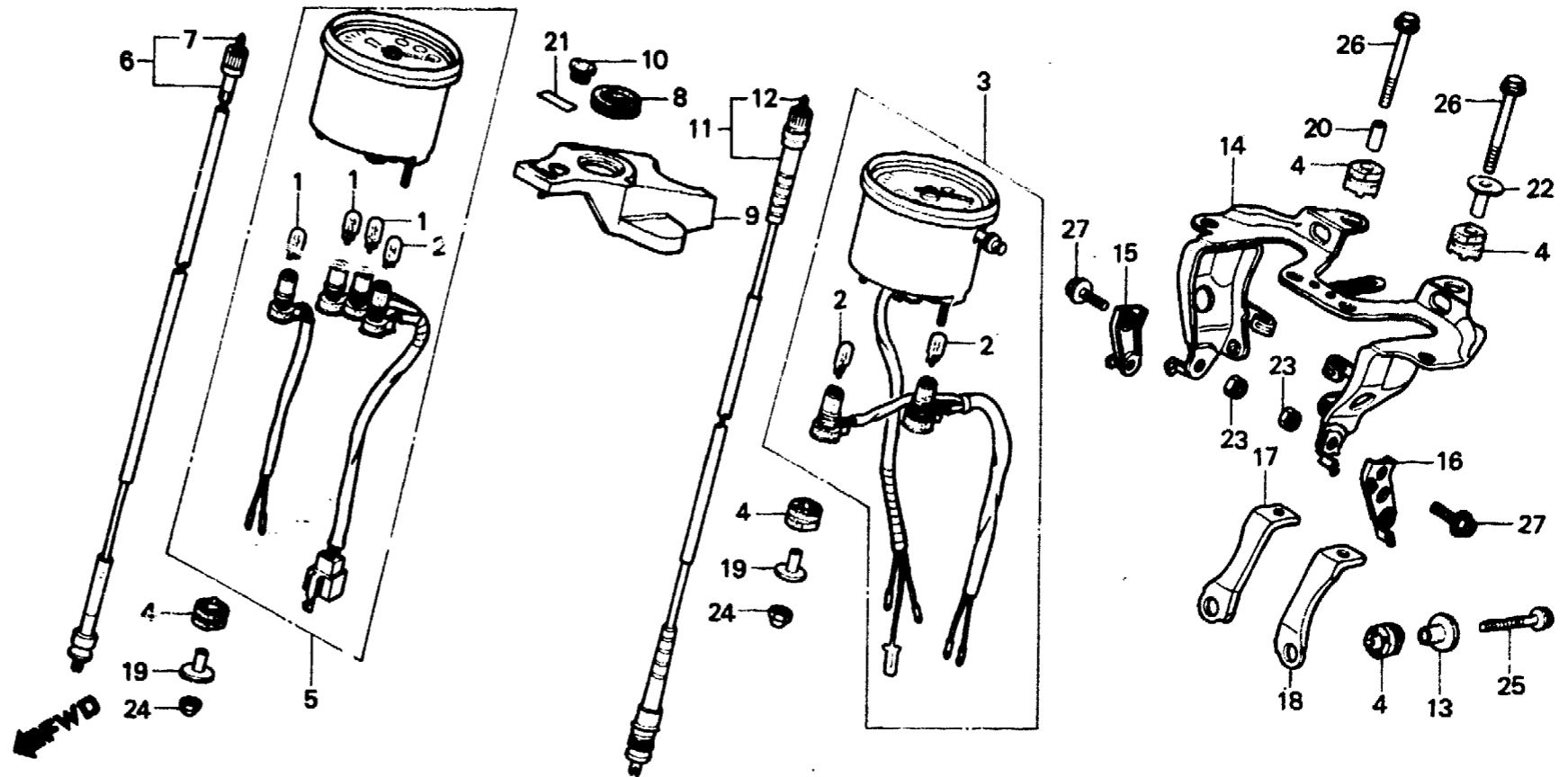
F-2-4

Meter • Headlight stay
(XL250Rc-B,DK,DM,E,ED,F1,
F2,G1,G2,IT,SA,SD,SW,U)

Compteurs • Appui de phare
(XL250Rc-B,DK,DM,E,ED,F1,
F2,G1,G2,IT,SA,SD,SW,U)

Messer • Scheinwerferstütze
(XL250Rc-B,DK,DM,E,ED,F1,
F2,G1,G2,IT,SA,SD,SW,U)

Medidor • Tirante de faro
(XL250Rc-B,DK,DM,E,ED,F1,
F2,G1,G2,IT,SA,SD,SW,U)



BMC4-25

Service item	F.R.T.	Ref. No.	Part No.	Description	Reqd. No.					Serial No.	Area code
					S	SZ	SA	Sb	Rc		
		18	61316-KB7-000	SUB STAY, L. HEADLIGHT					1		B,DK,DM,E,ED,F1,F2,G1 G2,IT,SA,SD,SW,U
		19	84706-163-670	COLLAR, TAILLIGHT MOUNTING					4		B,DK,DM,E,ED,F1,F2,G1 G2,IT,SA,SD,SW,U
		20	84907-174-670	COLLAR, NUMBER BRACKET CUSHION					1		B,DK,DM,E,ED,F1,F2,G1 G2,IT,SA,SD,SW,U
		21	87509-KB7-600	LABEL, IGNITION							B,DK,DM,E,F1,F2,IT,SA SW,U
		22	90501-MA3-720	COLLAR, 6.2X13					1		B,DK,DM,E,ED,F1,F2,G1 G2,IT,SA,SD,SW,U
		23	94001-08000-0S	NUT, HEX., 8MM					2		IT
		24	94021-06000	NUT, CAP, 6MM					4		B,DK,DM,E,ED,F1,F2,G1 G2,IT,SA,SD,SW,U
		25	95700-06025-00	BOLT, FLANGE, 6X25					2		B,DK,DM,E,ED,F1,F2,G1 G2,IT,SA,SD,SW,U
		26	95700-06040-00	BOLT, FLANGE, 6X40					2		B,DK,DM,E,ED,F1,F2,G1 G2,IT,SA,SD,SW,U
		27	95700-08014-08	BOLT, FLANGE, 8X14					2		IT

I 14

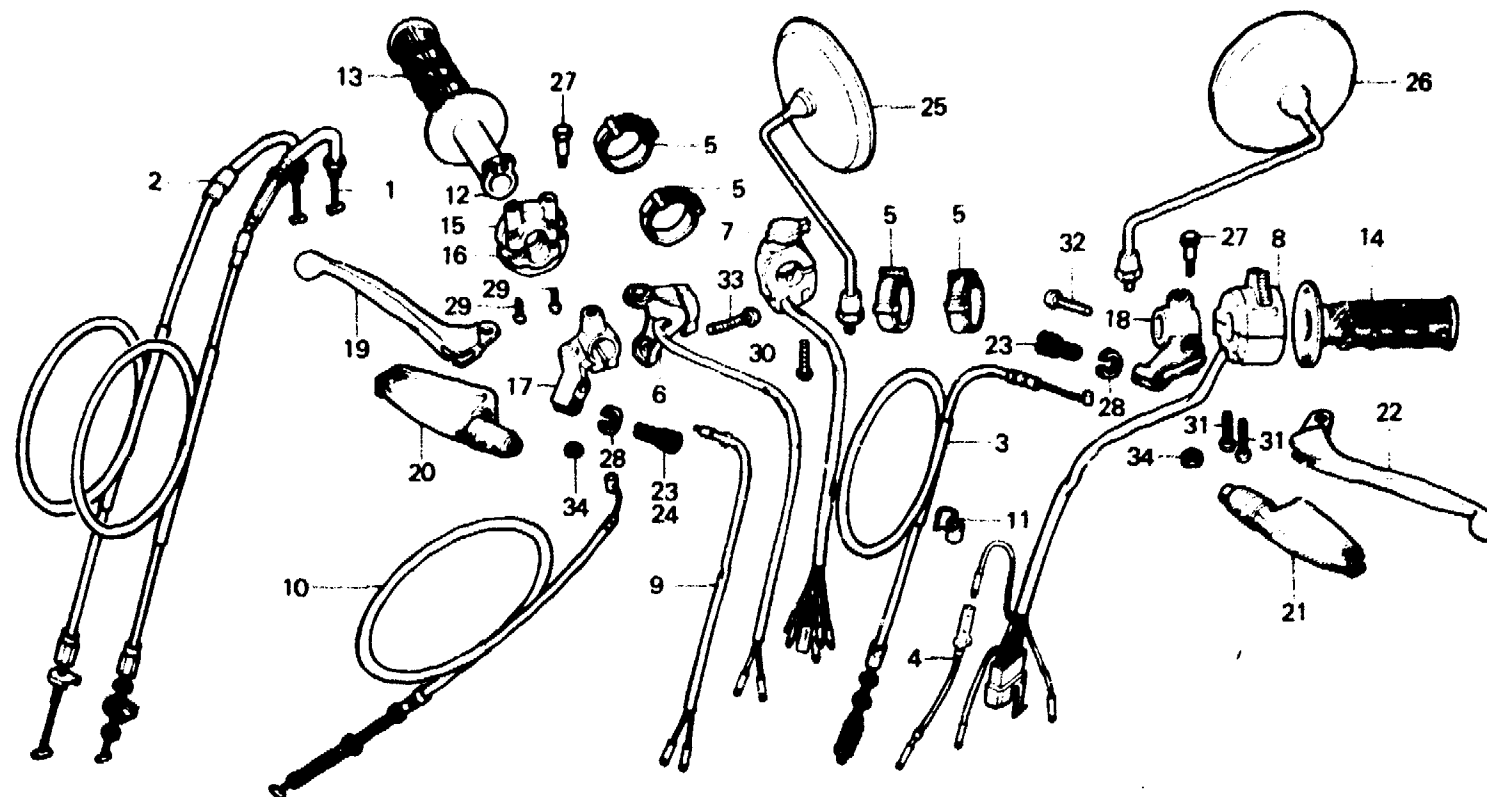
F-3

**Handle lever • Switch
(XL250S•Sz•SA•SB)**

**Levier de poignée • Interrupteur
(XL250S•Sz•SA•SB)**

**Lenkstangenhebel • Schalter
(XL250S•Sz•SA•SB)**

**Palanca de manubrio • Interruptor
(XL250S•Sz•SA•SB)**



B428-19A

Service item	F.R.T.	Ref. No.	Part No.	Description	Reqd. No.				Serial No.	Area code
					S	Sz	SA	Se Rc		
CABLE COMP. THROTTLE (ONE OR ALL)	0.5	1	17910-428-000	CABLE COMP. A, THROTTLE	1	1			B,DK,DM,E,ED,F1,F2,G1 G2,SA,SD,SW,U	
	0.2		17910-428-870	CABLE COMP. A, THROTTLE			1			
CABLE COMP., CLUTCH	0.2						1	1	CM	
•SWITCH COMP., FR. STOP								1		
•CABLE COMP., FR. BRAKE			17910-428-830	CABLE COMP. A, THROTTLE				1	B,DK,DM,E,ED,F1,F2,G1 G2,SA,SD,SW,U	
•HOUSING, UPPER THROTTLE										
•SWITCH ASSY., KILL	0.3	2	17920-428-000	CABLE COMP. B, THROTTLE	1	1			B,DK,DM,E,ED,F1,F2,G1 G2,SA,SD,SW,U	
•SWITCH ASSY., LIGHTING KILL			17920-428-870	CABLE COMP. B, THROTTLE			1			
•SWITCH, WINKER DIMMER							1	1	CM	
•PIPE, THROTTLE GRIP			17920-428-830	CABLE COMP. B, THROTTLE				1	B,DK,DM,E,ED,F1,F2,G1 G2,SA,SD,SW,U	
•BRACKET, R. HANDLE LEVER										
•BRACKET, L. HANDLE LEVER										
•GRIP, HANDLE	0.1	3	22870-428-000	CABLE COMP., CLUTCH	1	1			B,DK,DM,E,ED,F1,F2 G,G1,G2,SA,SD,SW,U	
•LEVER, STEERING HANDLE			22870-428-830	CABLE COMP., CLUTCH			1	1		
					1	1	1	1	CM	
		4	32102-385-000	SUB CORD B (WHITE)	1	1	1	1		
		5	32161-404-000	BAND B1, WIRE	4	4	4	4		

I 15

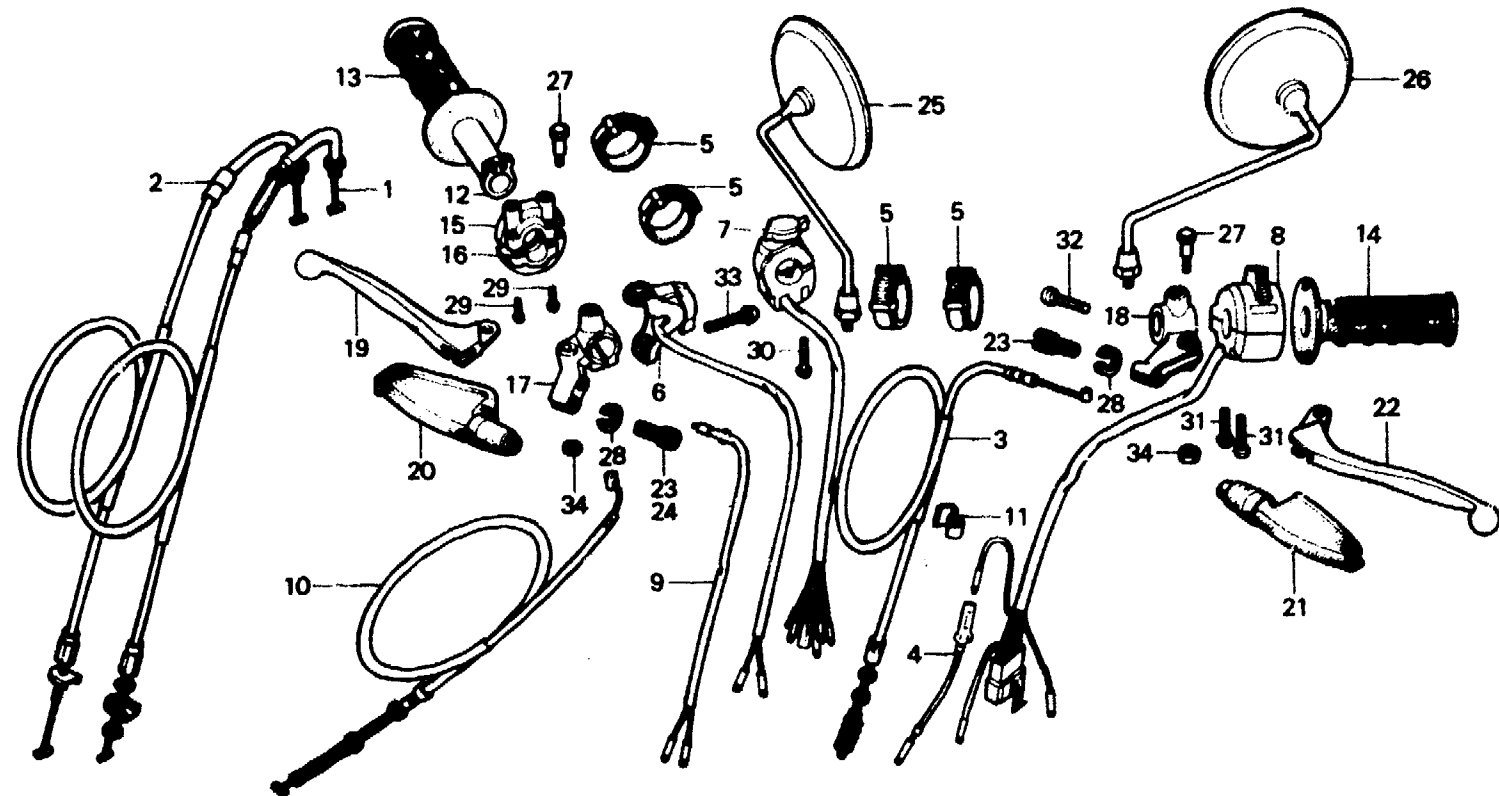
F-3

**Handle lever • Switch
(XL250S • Sz • SA • SB)**

**Levier de poignée • Interrupteur
(XL250S • Sz • SA • SB)**

**Lenkstangenhebel • Schalter
(XL250S • Sz • SA • SB)**

**Palanca de manubrio • Interruptor
(XL250S • Sz • SA • SB)**



B428-19A

← FWD

Service item	F.R.T.	Ref. No.	Part No.	Description	Reqd. No.					Serial No.	Area code
					S	Sz	SA	Ss	Rc		
		6	35130-428-671	SWITCH ASSY., KILL	1	1					CM
			35130-428-672	SWITCH ASSY., KILL (TOYO)			1				CM
		7	35150-428-003	SWITCH ASSY., KILL	1				5204067	5204066	CM
			35150-428-013	SWITCH ASSY., LIGHTING KILL			1				DK, DM, E, ED, F, G, SA, SW
			35150-428-630	SWITCH ASSY., LIGHTING KILL (TOYO)			1				U
			35150-428-830	SWITCH ASSY., LIGHTING KILL				1			B, DK, DM, E, ED, F1, F2, G1
			35130-437-711	SWITCH ASSY., KILL				1			G2, SA, SD, SW, U
		8	35200-428-013	SWITCH, WINKER DIMMER	1		1				CM
			35200-437-940	SWITCH, WINKER DIMMER	1	1	1	1			B, DK, DM, E, ED, F, F1, F2
								1			G, G1, G2, SA, SD, SW, U
											CM
											B, DK, DM, E, ED, F1, F2, G1
											G2, SA, SD, SW, U

I 16

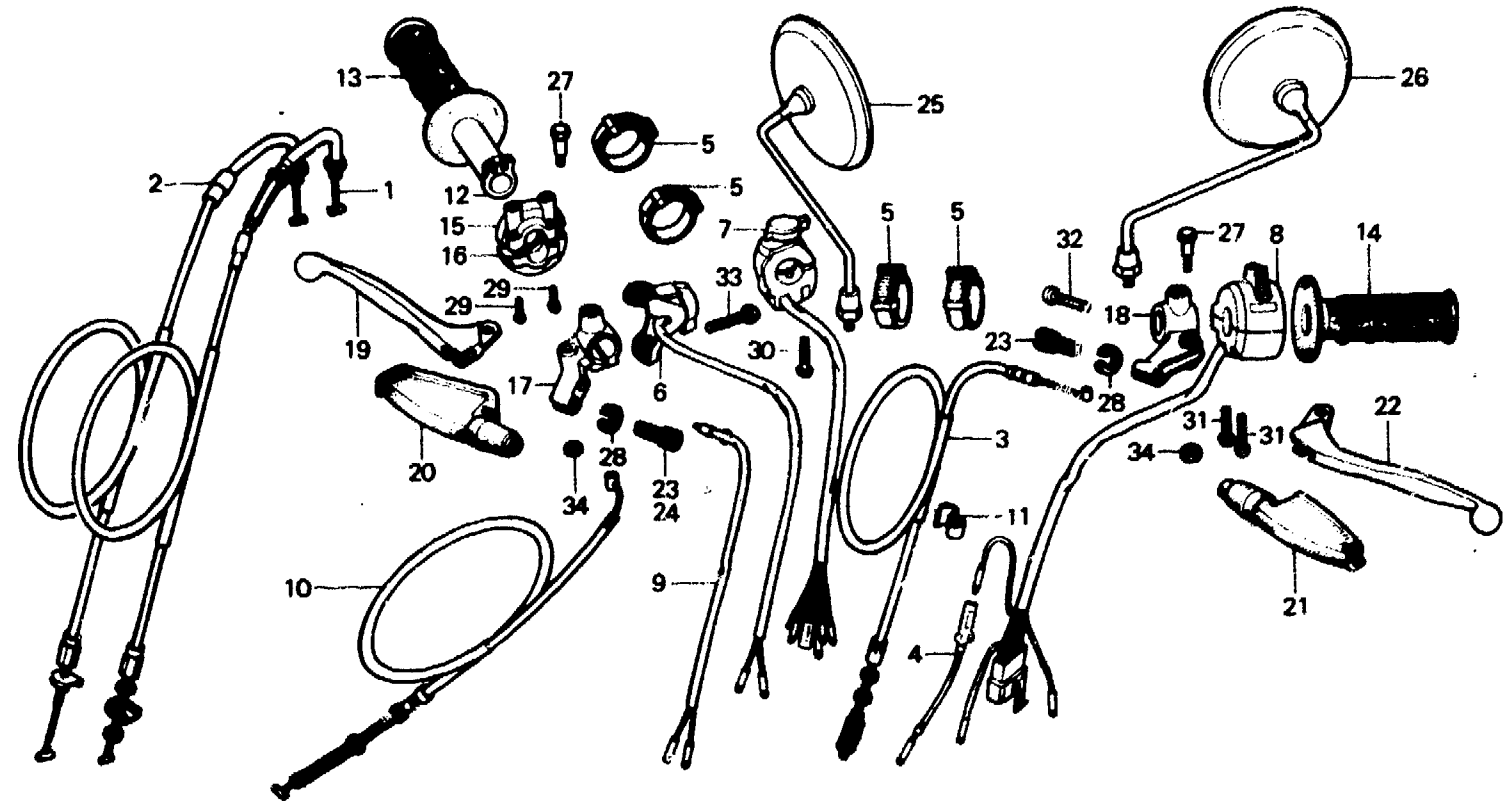
F-3

Handle lever • Switch
(XL250S • Sz • SA • SB)

Levier de poignée • Interrupteur
(XL250S • Sz • SA • SB)

Lenkstangenhebel • Schalter
(XL250S • Sz • SA • SB)

Palanca de manubrio • interruptor
(XL250S • Sz • SA • SB)



B428-19A

Service item	F.R.T.	Ref. No.	Part No.	Description	Reqd. No. XL250					Serial No.	Area code
					S	Sz	SA	Sb	Rc		
		9	35330-391-690	SWITCH COMP., FR. STOP	1						CM
					1					5016068	DK,DM,E,ED,F,G,SA,SW
			35340-329-000	SWITCH COMP., FR. STOP	1					5103214	U
										5016069	DK,DM,E,ED,F,G,SA,SW
										5103215	U
		10	45450-428-000	CABLE COMP., FR. BRAKE	1	1		1	1		
			45450-428-870	CABLE COMP., FR. BRAKE				1	1		
		11	45465-341-700	CLIP, FR. BRAKE CABLE	1	1	1	1	1		
		12	53141-428-000	PIPE, THROTTLE GRIP	1	1	1	1	1		
		13	53165-430-000	GRIP, R. HANDLE	1	1	1	1	1		
		14	53166-430-000	GRIP, L. HANDLE	1	1	1	1	1		
		15	53167-385-000	HOUSING, UPPER THROTTLE	1	1	1	1	1		
		16	53168-428-000	HOUSING, UNDER THROTTLE	1	1	1	1	1		
		17	53171-312-003	BRACKET, R. HANDLE LEVER	1	1	1	1	1		

J 1

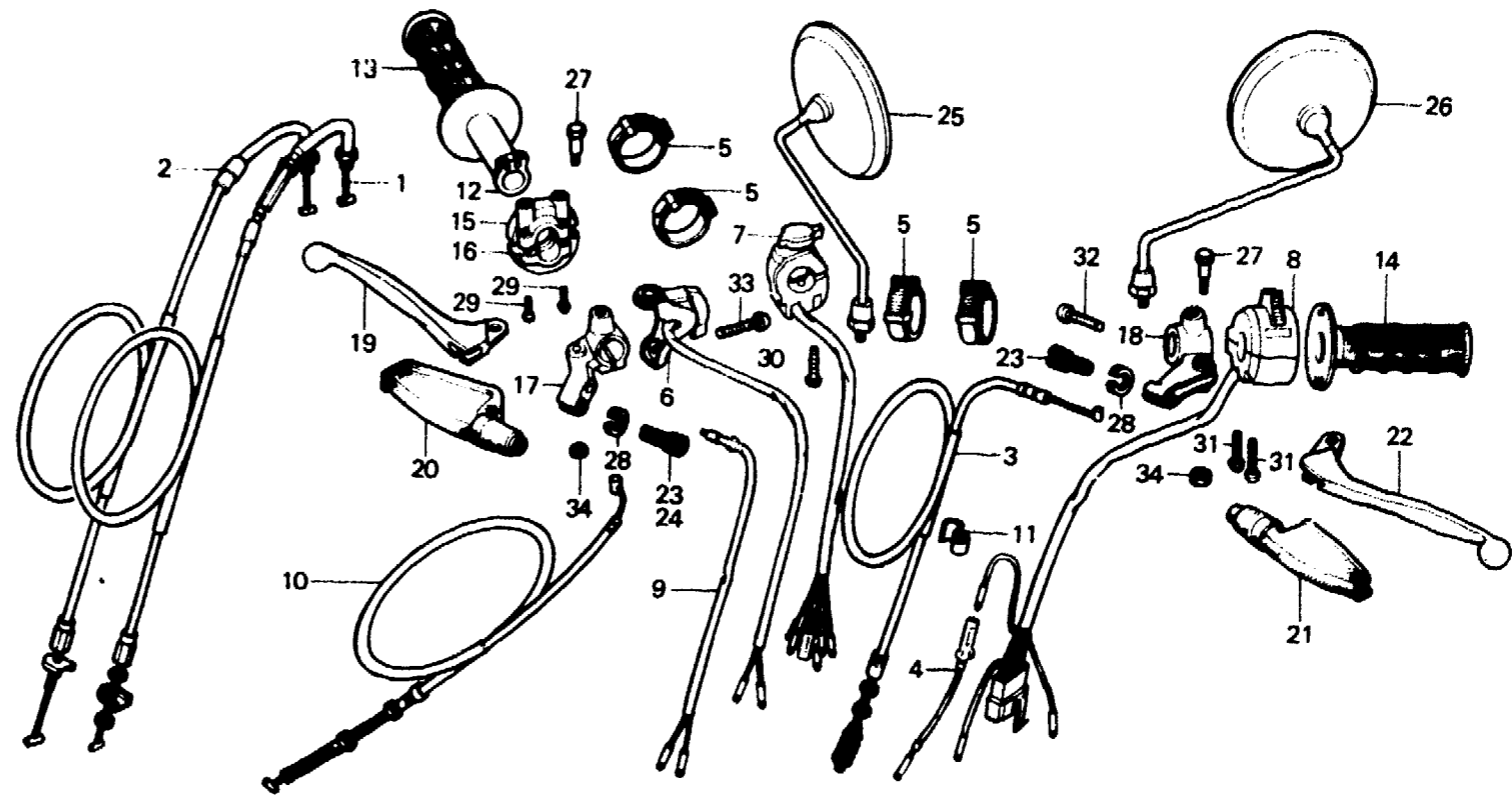
F-3

**Handle lever • Switch
(XL250S • Sz • SA • SB)**

**Levier de poignée • Interrupteur
(XL250S • Sz • SA • SB)**

**Lenkstangenhebel • Schalter
(XL250S • Sz • SA • SB)**

**Palanca de manubrio • Interruptor
(XL250S • Sz • SA • SB)**



B428-19A

Service item	F.R.T.	Ref. No.	Part No.	Description	Reqd. No. XL250					Serial No.	Area code
					S	Sz	SA	Sb	Rc		
		18	53172-310-010	BRACKET, L. HANDLE LEVER	1	1	1	1			
		19	53175-360-700	LEVER, R. STEERING HANDLE	1	1					
			53175-399-700	LEVER, R. STEERING HANDLE			1	1			
		20	53176-428-000	COVER, R. HANDLE LEVER	1	1	1	1			
		21	53176-430-000	COVER, HANDLE LEVER	1	1	1	1			
		22	53178-360-700	LEVER, L. STEERING HANDLE	1	1					
			53178-399-700	LEVER, L. STEERING HANDLE			1	1			
		23	53192-268-000	BOLT, CLUTCH WIRE ADJUSTING	2	2	1	1			
		24	53192-312-000	BOLT, CLUTCH CABLE ADJUSTING			1	1			
		25	88110-304-621	MIRROR, R. BACK	1					5017078 E,F	
				88110-304-622							

1982.01.10

E

J1

J 2

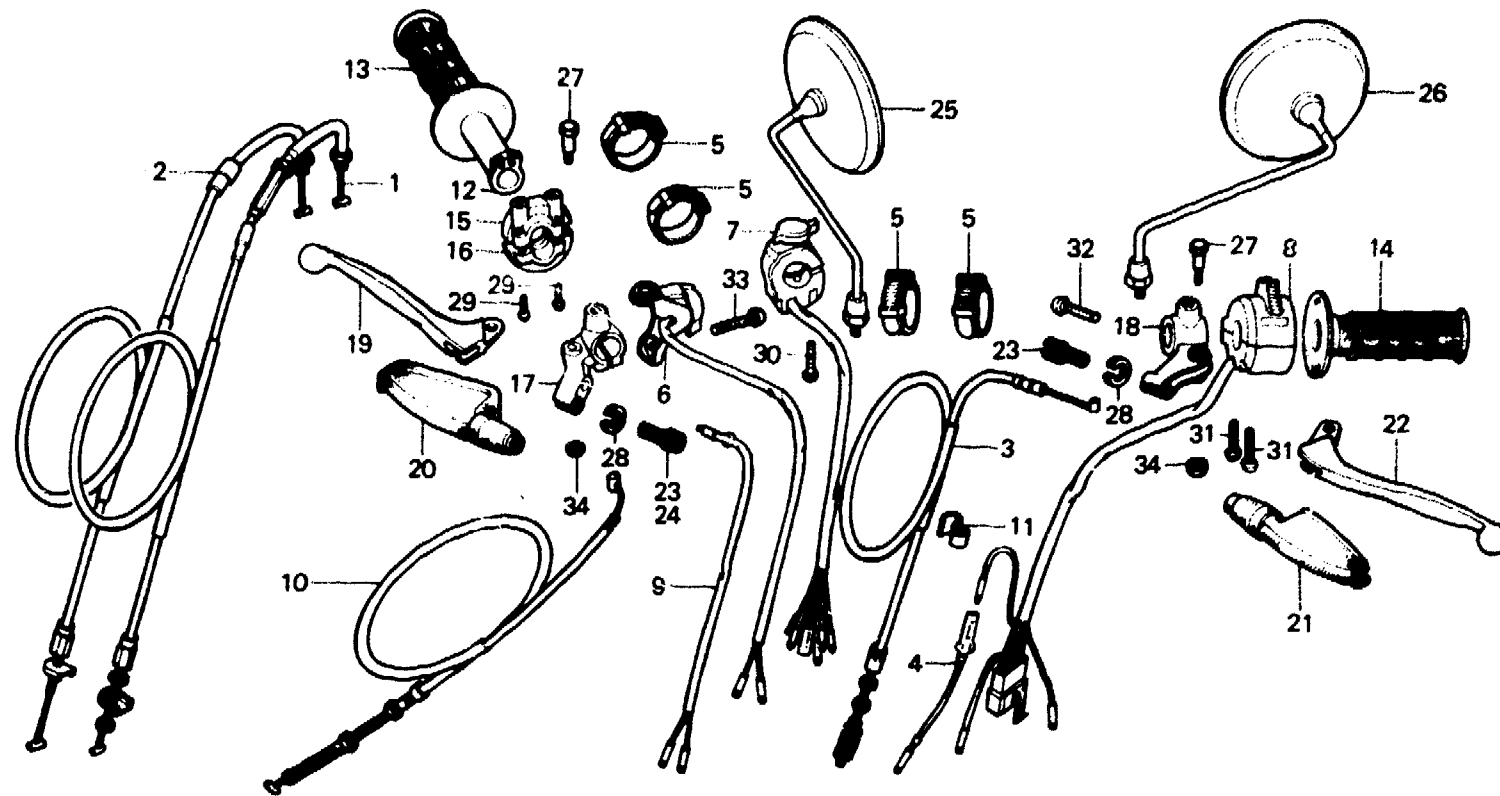
F-3

**Handle lever • Switch
(XL250S•SZ•SA•SB)**

**Levier de poignée • Interrupteur
(XL250S•SZ•SA•SB)**

**Lenkstangenhebel • Schalter
(XL250S•SZ•SA•SB)**

**Palanca de manubrio • Interruptor
(XL250S•SZ•SA•SB)**



B428-19A

Service item	F.R.T.	Ref. No.	Part No.	Description	Reqd. No.					Serial No.	Area code
					S	Sz	SA	Sb	Rc		
			88110-393-611	MIRROR, R. BACK	1	1	1	1			B,CM,DK,DM,ED,G,G1,G2 SA,SD,SW U
			88110-369-650	MIRROR, R. BACK	1						U
			88110-304-622	MIRROR, R. BACK	1				5017079		E,F E,F1,F2
		26	88120-304-621	MIRROR, L. BACK	1					5017078	E,F
			88120-304-622	MIRROR, L. BACK	1	1	1	1			B,CM,DK,DM,ED,G,G1,G2 SA,SD,SW U
			88120-333-611	MIRROR, L. BACK	1	1	1	1			B,CM,DK,DM,ED,G,G1,G2 SA,SD,SW U
			88120-369-650	MIRROR, L. BACK	1						U
			88120-304-622	MIRROR, L. BACK	1				5017079		E,F E,F1,F2
		27	90114-310-000	BOLT, HANDLE LEVER PIVOT	2	2					
			90114-428-870	BOLT, HANDLE LEVER PIVOT			2	2			
		28	90321-315-670	NUT, FIXING	2	2	2	2			
		29	93500-05020-0A	SCREW, PAN, 5X20	2	2	2	2			

J 3

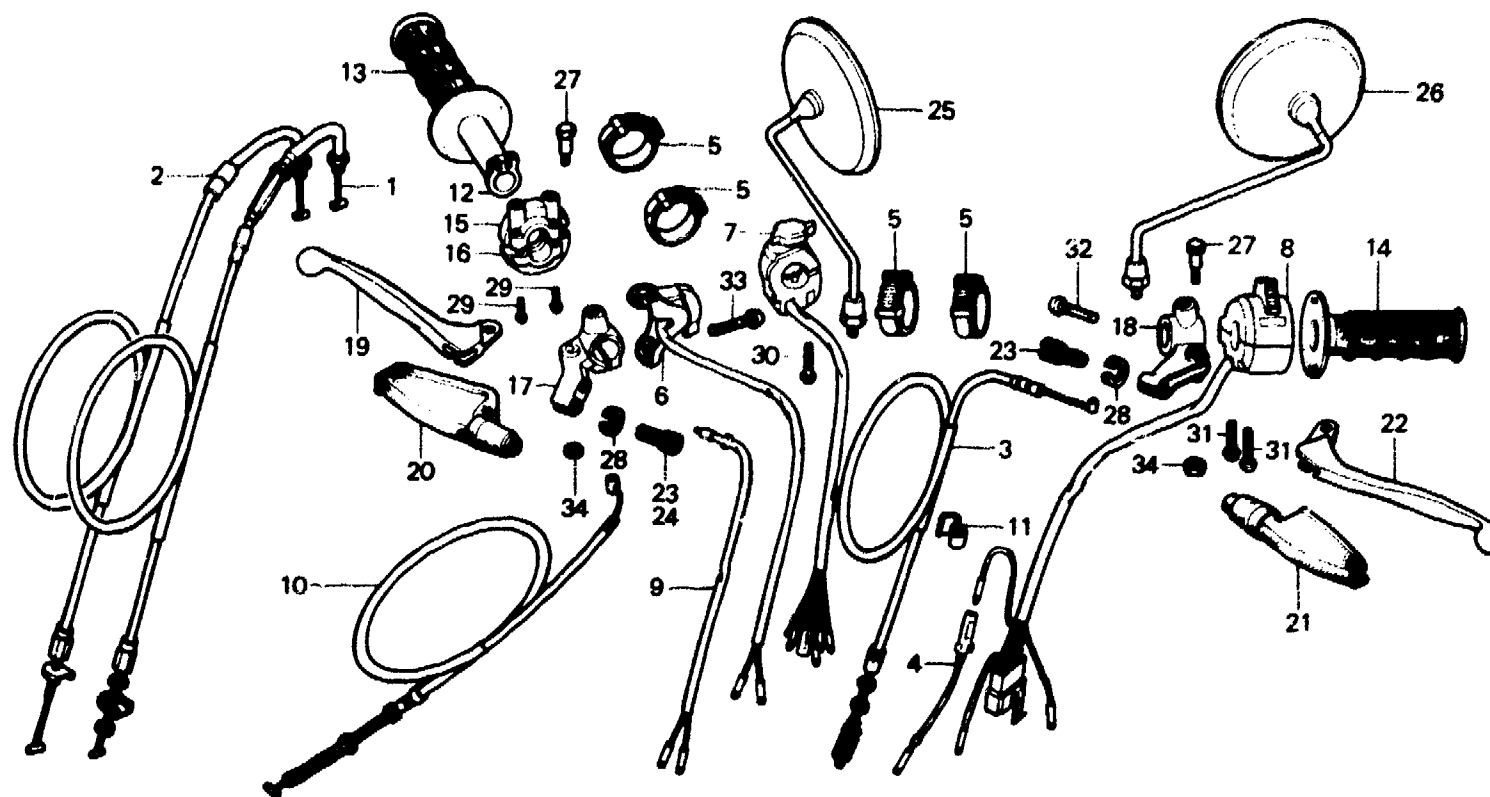
F-3

**Handle lever • Switch
(XL250S • Sz • SA • SB)**

**Levier de poignée • Interrupteur
(XL250S • Sz • SA • SB)**

**Lenkstangenhebel • Schalter
(XL250S • Sz • SA • SB)**

**Palanca de manubrio • Interruptor
(XL250S • Sz • SA • SB)**



← PWD

B428-19A

Service item	F.R.T.	Ref. No.	Part No.	Description	Reqd. No.					Serial No.	Area code
					S	Sz	SA	SB	Rc		
		30	93500-05028-0A	SCREW, PAN, 5X28	2	2	2				B,DK,DM,E,ED,F,F1,F2 G,G1,G2,SA,SD,SW,U CM
		31	93500-05030-0A	SCREW, PAN, 5X30	2	2	2	2			
		32	93500-06025	SCREW, PAN, 6X25	1	1	1	1			
		33	93500-06028	SCREW, PAN, 6X28	1	1	1	1			
		34	94001-06000	NUT, HEX., 6MM	2	2	2	2			

1982.01.10

E

J3

J 4

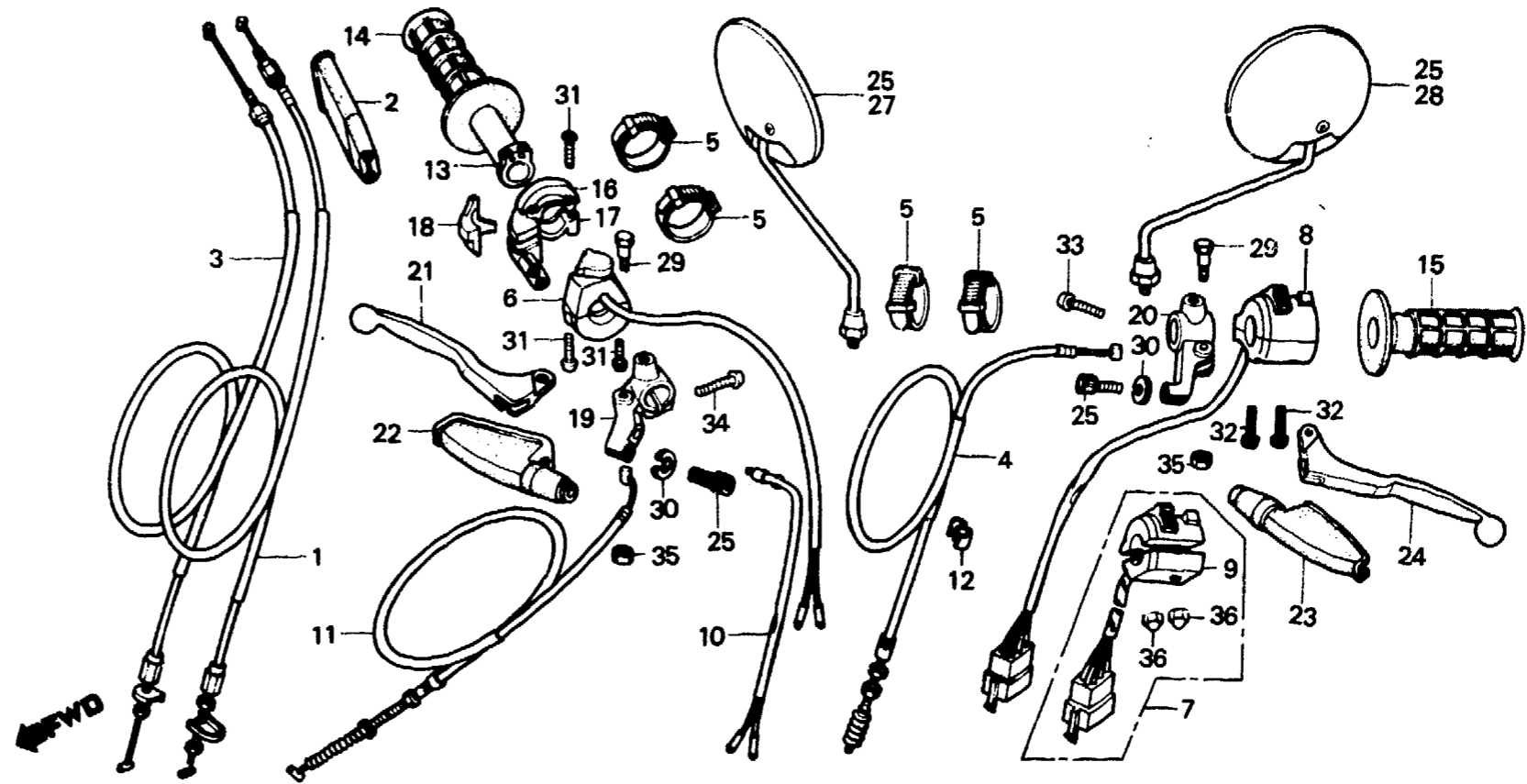
F-3-1

**Handle lever • Switch
(XL250Rc)**

**Levier de poignée • Interrupteur
(XL250Rc)**

**Lenkstangenhebel • Schalter
(XL250Rc)**

**Palanca de manubrio • Interruptor
(XL250Rc)**



BKB7-3A

Service item	F.R.T.	Ref. No.	Part No.	Description	Reqd. No.					Serial No.	Area code
					S	Sz	SA	Sb	Rc		
CABLE COMP. THROTTLE (ONE OR ALL)	0.5	1	17910-KB7-000	CABLE COMP. A, THROTTLE					1		
CABLE COMP., CLUTCH	0.2	2	17913-KB7-000	COVER, THROTTLE CABLE					1		
SWITCH ASSY., RR. STOP		3	17920-KB7-000	CABLE COMP. B, THROTTLE					1		
CABLE COMP., FR. BRAKE		4	22870-KB7-000	CABLE COMP., CLUTCH					1		
SWITCH ASSY., KILL	0.3	5	32161-404-000	BAND B1, WIRE					4		
SWITCH ASSY., WINKER		6	35130-KB7-003	SWITCH ASSY., KILL					1		
PIPE, THROTTLE GRIP		7	35200-KB7-000	SWITCH ASSY., WINKER					1		B,DK,DM,E,ED,F1,F2,IT SA,SW,U
HOUSING, UPPER THROTTLE			35200-KB7-610	SWITCH ASSY., WINKER					1		G1,G2,SD
BRACKET, R. HANDLE LEVER		8	35200-MC4-671	SWITCH ASSY., WINKER DIMMER (TOYO)					1		CM
BRACKET, L. HANDLE LEVER	0.4	9	35220-KB7-003	HOUSING, SWITCH SETTING					1		B,DK,DM,E,ED,F1,F2,G1
SWITCH ASSY., WINKER DIMMER	0.1	10	35350-197-000	SWITCH ASSY., RR. STOP					1		G2,IT,SA,SD,SW,U
GRIP, HANDLE		11	45450-KB7-000	CABLE COMP., FR. BRAKE					1		
LEVER, STEERING HANDLE											

J 5

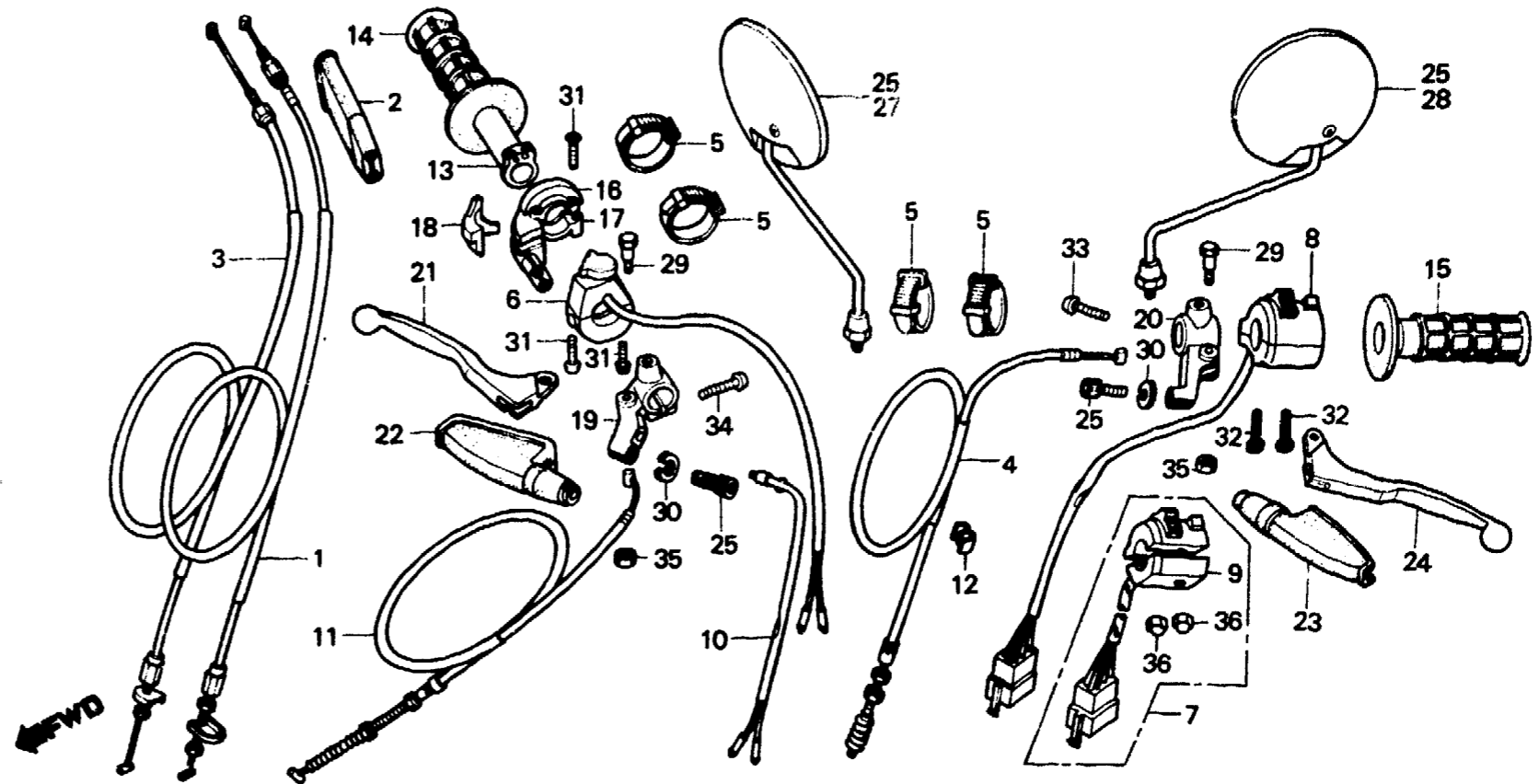
F-3-1

**Handle lever • Switch
(XL250Rc)**

**Levier de poignée • Interrupteur
(XL250Rc)**

**Lenkstangenhebel • Schalter
(XL250Rc)**

**Palanca de manubrio • Interruptor
(XL250Rc)**



BKB7-3A

Service item	F.R.T.	Ref. No.	Part No.	Description	Reqd. No.					Serial No.	Area code
					S	Sz	SA	Sb	Rc		
		12	45465-341-700	CLIP, FR. BRAKE CABLE						1	
		13	53141-429-000	PIPE, THROTTLE GRIP						1	
		14	53165-430-000	GRIP, R. HANDLE						1	
		15	53166-430-000	GRIP, L. HANDLE						1	
		16	53167-KB7-000	HOUSING, UPPER THROTTLE						1	
		17	53168-KB7-000	HOUSING, UNDER THROTTLE						1	
		18	53169-KB7-000	SLIDER, THROTTLE CABLE						1	
		19	53171-KB7-000	BRACKET, R. HANDLE LEVER						1	
		20	53172-310-010	BRACKET, L. HANDLE LEVER						1	
		21	53175-KB7-000	LEVER, R. STEERING HANDLE						1	
		22	53176-428-010	COVER, R. HANDLE LEVER						1	
		23	53177-430-000	COVER, L. HANDLE LEVER						1	

J 6

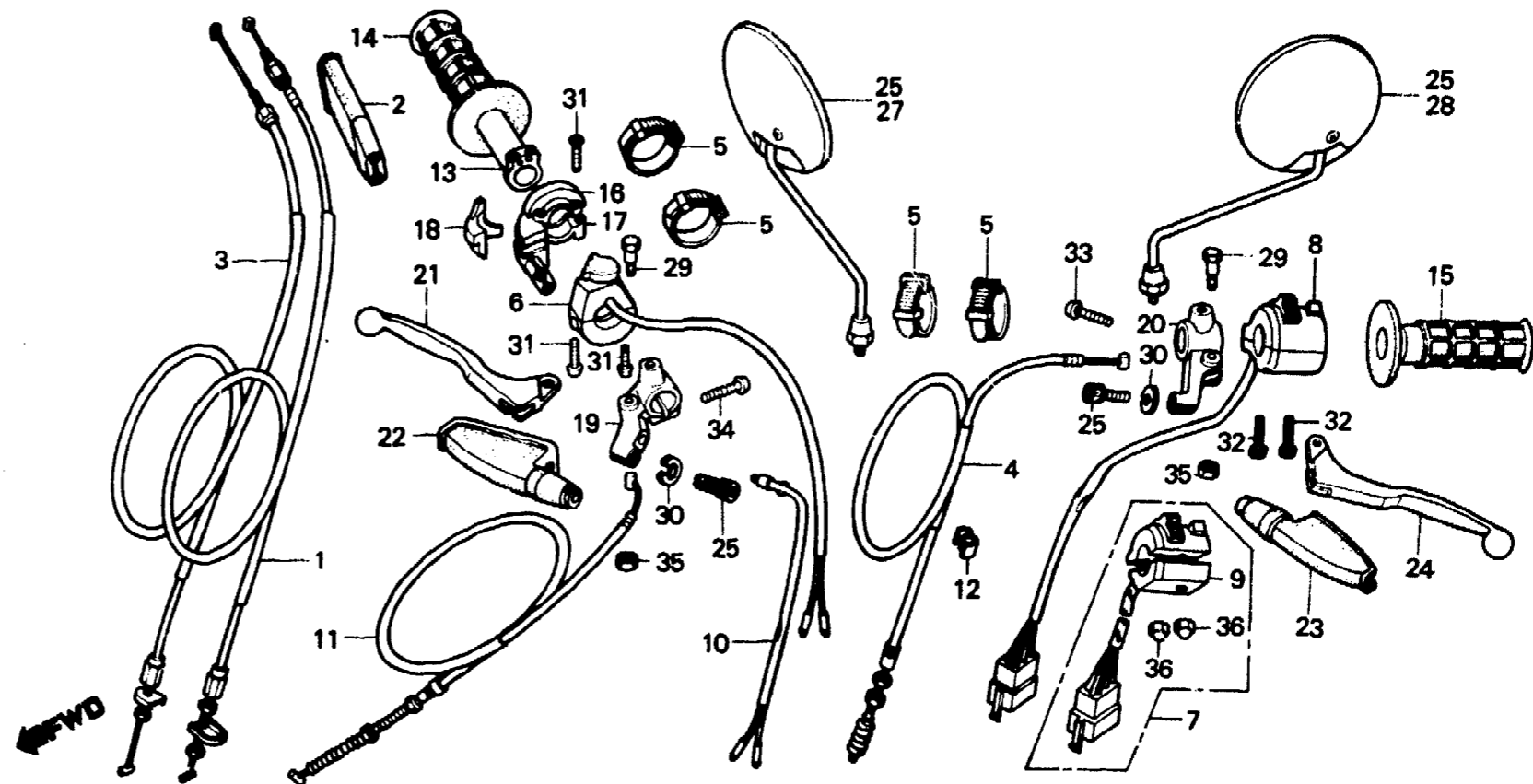
F-3-1

Handle lever • Switch
(XL250Rc)

Levier de poignée • Interrupteur
(XL250Rc)

Lenkstangenhebel • Schalter
(XL250Rc)

Palanca de manubrio • Interruptor
(XL250Rc)



BKB7-3A

Service item	F.R.T.	Ref. No.	Part No.	Description	Reqd. No.					Serial No.	Area code
					S	Sz	SA	Sb	Rc		
		24	53178-KB7-000	LEVER, L. STEERING HANDLE					1		
		25	53192-268-000	BOLT, CLUTCH WIRE ADJUSTING					2		
		26	88110-KB7-000	MIRROR, BACK					2		B, CM, DK, DM, ED, G1, G2 IT, SA, SD, SW
		27	88110-304-622	MIRROR, R. BACK					1		E, F1, F2
			88110-369-650	MIRROR, R. BACK					1		U
		28	88120-304-622	MIRROR, L. BACK					1		E, F1, F2
			88120-369-650	MIRROR, L. BACK					1		U
		29	90114-428-870	BOLT, HANDLE LEVER PIVOT					2		
		30	90321-315-670	NUT, FIXING					2		
		31	93500-05020-0A	SCREW, PAN, 5X20					4		
		32	93500-05030-0A	SCREW, PAN, 5X30					2		CM
		33	93500-06025	SCREW, PAN, 6X25					1		
		34	93500-06028	SCREW, PAN, 6X28					1		
		35	94001-06000	NUT, HEX., 6MM					2		

1982.01.10

E

J6

J 7

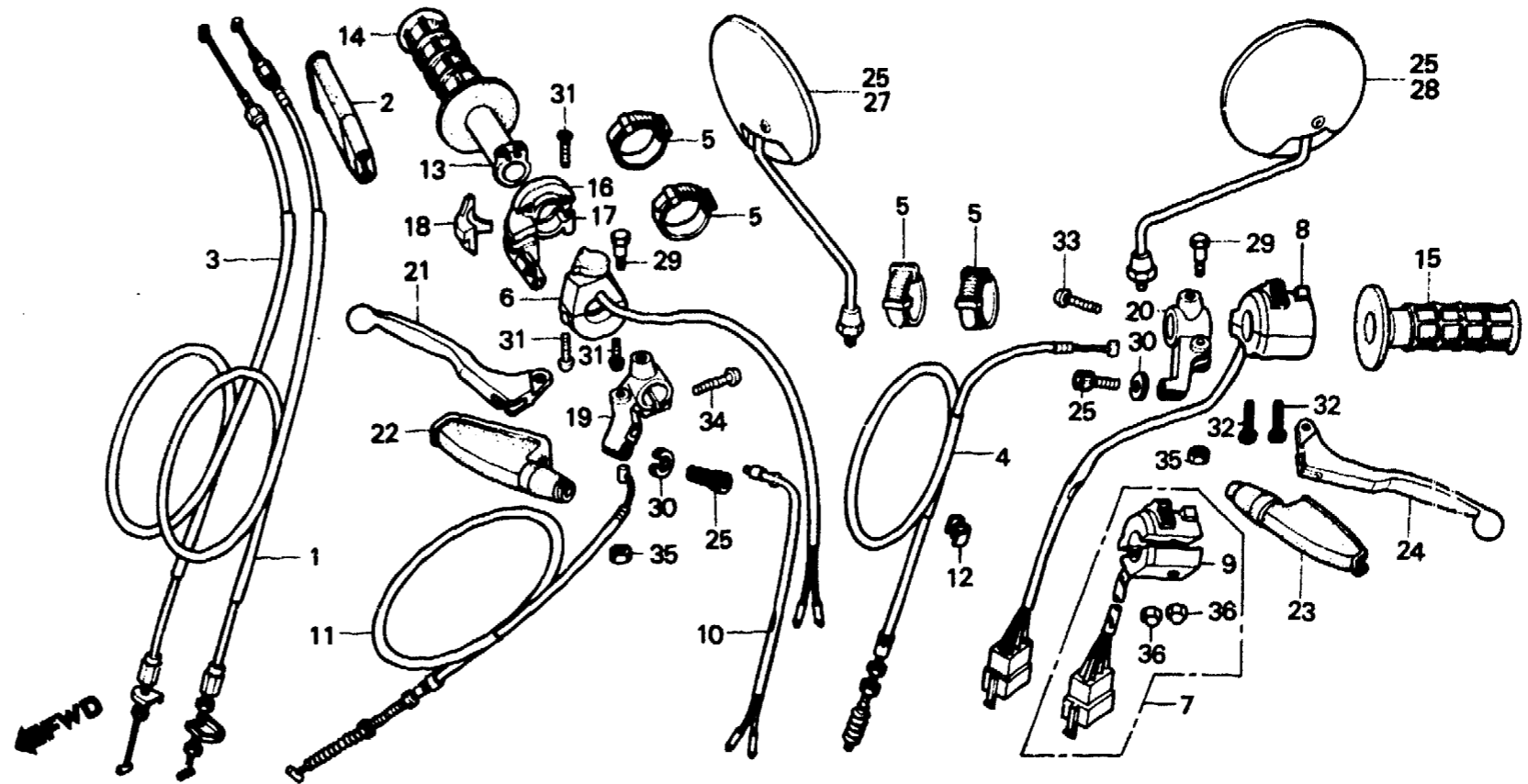
F-3-1

**Handle lever • Switch
(XL250Rc)**

**Levier de poignée • Interrupteur
(XL250Rc)**

**Lenkstangenhebel • Schalter
(XL250Rc)**

**Palanca de manubrio • Interruptor
(XL250Rc)**



BKB7-3A

Service item	F.R.T.	Ref. No.	Part No.	Description	Reqd. No.					Serial No.	Area code
					S	Sz	SA	Se	Rc		
		36	94021-05070-0S	NUT, CAP, 5MM					2		B,DK,DM,E,ED,F1,F2,G1 G2,IT,SA,SD,SW,U

1982.01.10

E

J7

J 8

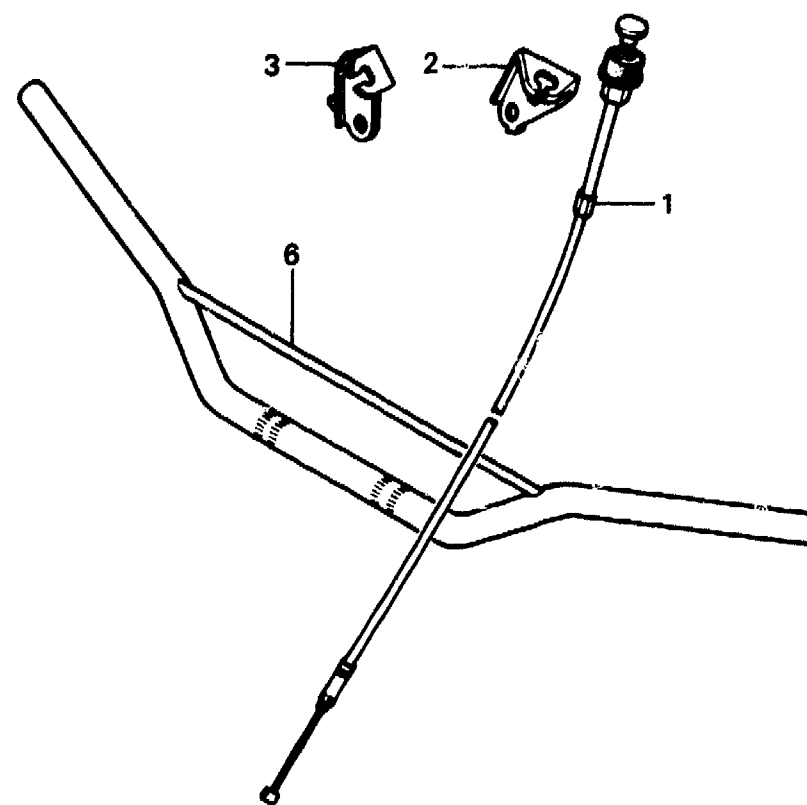
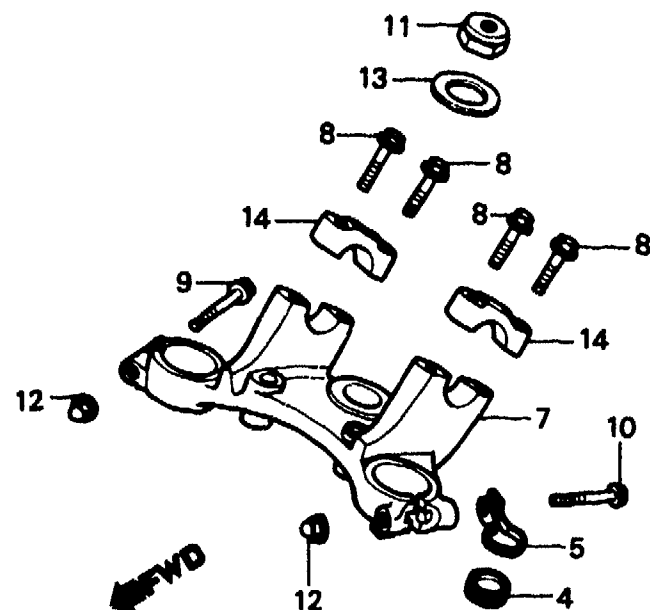
F-4

**Handle pipe • Top bridge
(XL250S•Sz•SA•SB)**

**Guidon • Haut de fourche
(XL250S•Sz•SA•SB)**

**Lenkrohr • Obere Brücke
(XL250S•Sz•SA•SB)**

**Tube do manubrio •
Puente superior
(XL250S•Sz•SA•SB)**



B428-20A

Service item	F.R.T.	Ref. No.	Part No.	Description	Reqd. No.					Serial No.	Area code	
					S	Sz	SA	Sb	Rc			
CABLE COMP., CHOKE PIPE COMP., STEERING HANDLE BRIDGE, FORK TOP	0.3 0.8 0.6	1	17950-428-000	CABLE COMP., CHOKE	1	1					B,DK,DM,E,ED,F,F1,F2 G,G1,G2,SA,SD,SW,U CM	
			17950-428-670	CABLE COMP., CHOKE	1	1	1	1			B,DK,DM,E,ED,F1,F2,G1 G2,SA,SD,SW,U	
			17950-428-830	CABLE COMP., CHOKE					1			B,DK,DM,E,ED,F,F1,F2 G,G1,G2,SA,SD,SW,U
		2	17951-428-000	STAY, CHOKE CABLE	1	1						CM
		3	17951-428-830	BRACKET, CHOKE CABLE	1	1	1	1				B,DK,DM,E,ED,F1,F2,G1 G2,SA,SD,SW,U
		4	45466-329-000	INNER, CABLE GUIDE	1	1	1	1				
		5	45467-428-000	GUIDE A, BRAKE CABLE	1	1	1	1				
		6	53100-428-000	PIPE COMP., STEERING HANDLE	1	1	1	1			CM	
			53100-428-600	PIPE COMP., STEERING HANDLE	1					5014098	DK,DM,E,ED,F,G,SA,SW U	
			53100-428-000	PIPE COMP., STEERING HANDLE								



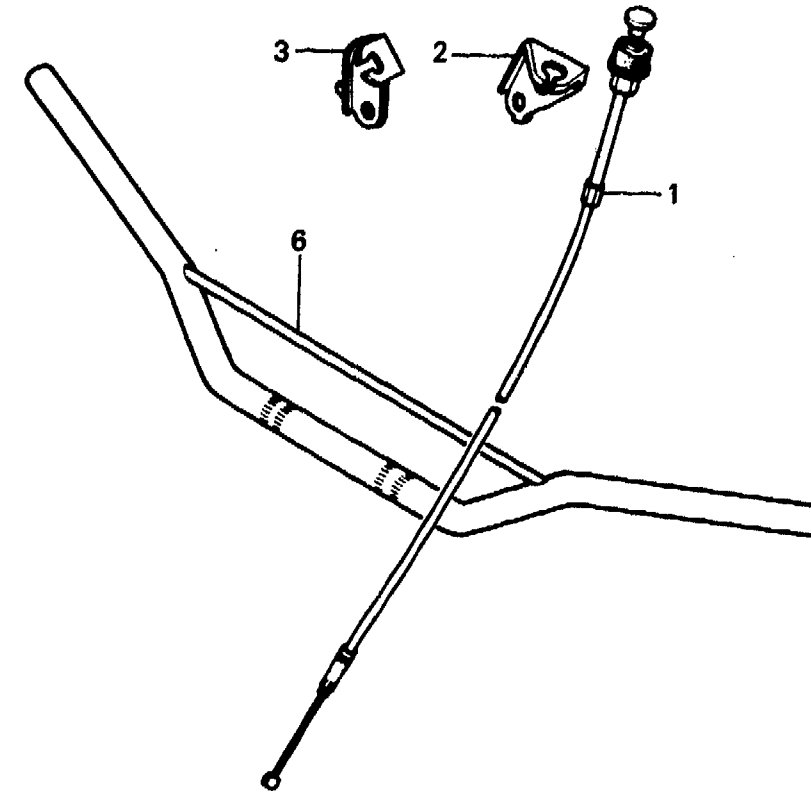
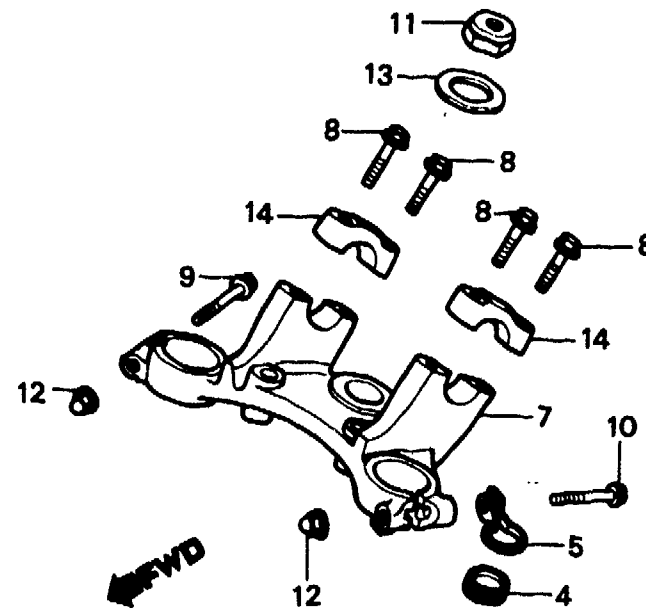
F-4

**Handle pipe • Top bridge
(XL250S•Sz•SA•SB)**

**Guidon • Haut de fourche
(XL250S•Sz•SA•SB)**

**Lenkrohr • Obere Brücke
(XL250S•Sz•SA•SB)**

**Tubo do manubrio •
Puente superior
(XL250S•Sz•SA•SB)**



B428-20A

Service item	F.R.T.	Ref. No.	Part No.	Description	Reqd. No.					Serial No.	Area code
					S	Sz	SA	Sb	Rc		
			53100-428-000	PIPE COMP., STEERING HANDLE	1					5014099	DK,DM,E,ED,F,G,SA,SW U B,DK,DM,E,ED,F1,F2,G1 G2,SA,SD,SW,U
		7	53230-428-000	BRIDGE, FORK TOP	1	1	1	1			
		8	90111-362-000	BOLT, FLANGE, 8X36	4	4	4	4			
		9	90155-369-000	BOLT, FLANGE, 7X54	1	1					
			90155-428-870	BOLT, FLANGE, 7X54			1	1			
		10	90155-428-000	BOLT, FLANGE, 7X57	1	1					
			90156-428-870	BOLT, FLANGE, 7X57			1	1			
		11	90304-428-000	NUT, STEERING STEM	1	1					
			90304-428-870	NUT, STEERING STEM			1	1			
		12	90360-375-000	NUT, CAP, 7MM	2	2					
			90360-428-870	NUT, CAP, 7MM			2	2			
		13	90503-289-000	WASHER, STEERING STEM	1	1					
			90503-428-870	WASHER, STEERING STEM			1	1			
		14	95014-22200	HOLDER B2, HANDLE PIPE UPPER	2	2	2	2			

J 10

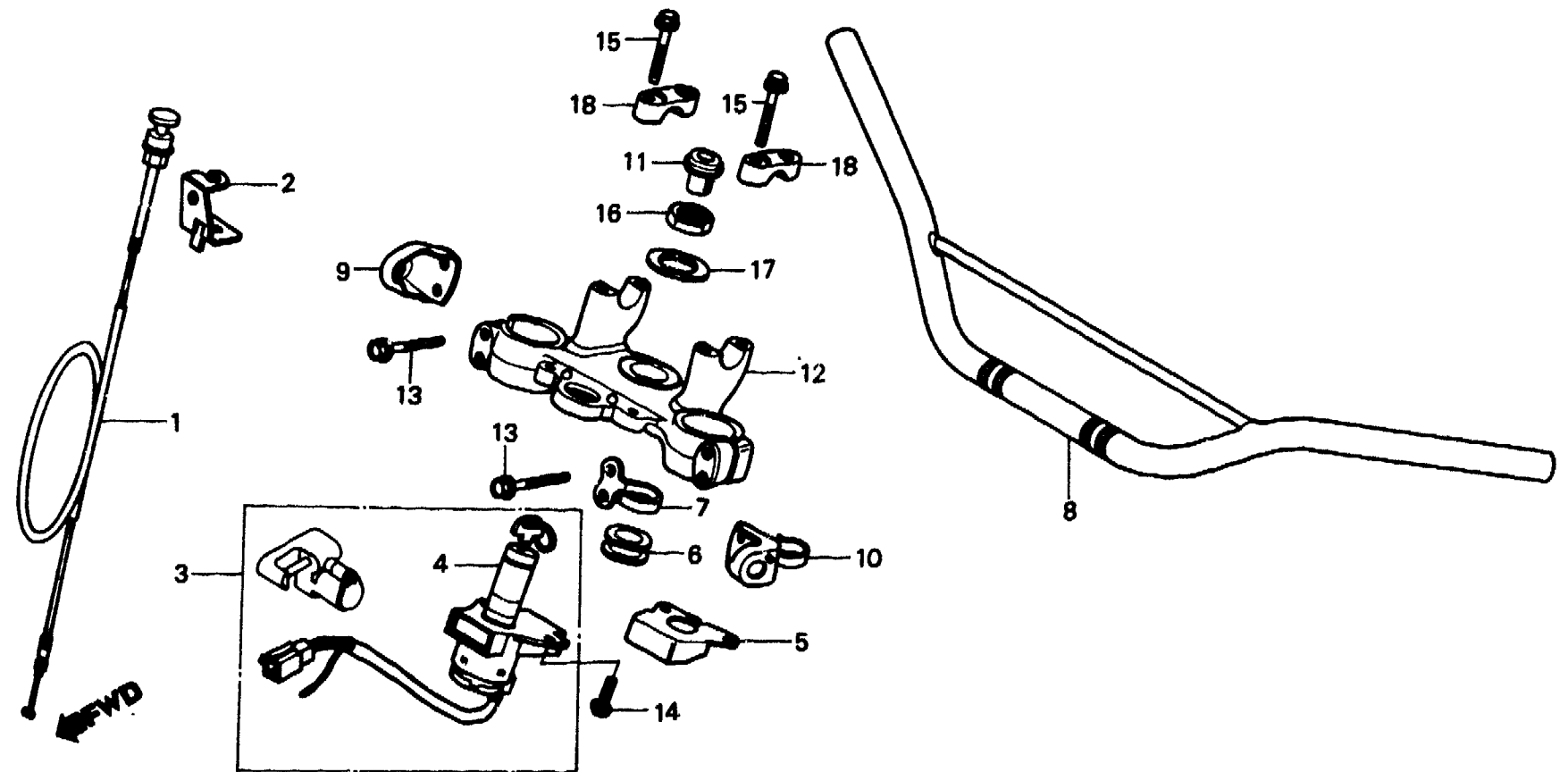
F-4-1

**Handle pipe • Top bridge
(XL250Rc)**

**Guidon • Haut de fourche
(XL250Rc)**

**Lenkrohr • Obere Brücke
(XL250Rc)**

**Tubo do manubrio •
Puente superior
(XL250Rc)**



BKB7-4

Service item	F.R.T.	Ref. No.	Part No.	Description	Reqd. No. XL250					Serial No.	Area code
					S	Sz	SA	Sb	Rc		
CABLE COMP., CHOKE	0.2	1	17950-KB7-000	CABLE COMP., CHOKE					1		
KEY SET	0.6	2	17951-KB7-670	STAY, CHOKE CABLE					1		
PIPE COMP., STEERING HANDLE		3	35010-KB7-000	KEY SET					1		B,CM,DK,DM,E,F1,F2,IT
SWITCH ASSY., COMBINATION & LOCK	0.4		35010-MC4-610	KEY SET					1		SA,SW,U
BRIDGE, FORK TOP	0.5	4	35100-KB7-007	SWITCH ASSY., COMBINATION & LOCK					1		B,CM,DK,DM,E,F1,F2,IT
			35100-MC4-611	SWITCH ASSY., COMBINATION & LOCK					1		SA,SW,U
		5	35106-MA1-610	COVER, COMBINATION SWITCH					1		ED,G1,G2,SD
		6	45466-KA4-000	INNER, CABLE GUIDE					1		
		7	45469-MC4-000	GUIDE, BRAKE CABLE TOP					1		B,CM,DK,DM,E,F1,F2,IT
		8	53100-KB7-000	PIPE COMP., STEERING HANDLE					1		SA,SD,U
		9	53101-KB7-610	STAY, R. FR. WINKER SETTING					1		ED,G1,G2,SW

J 11

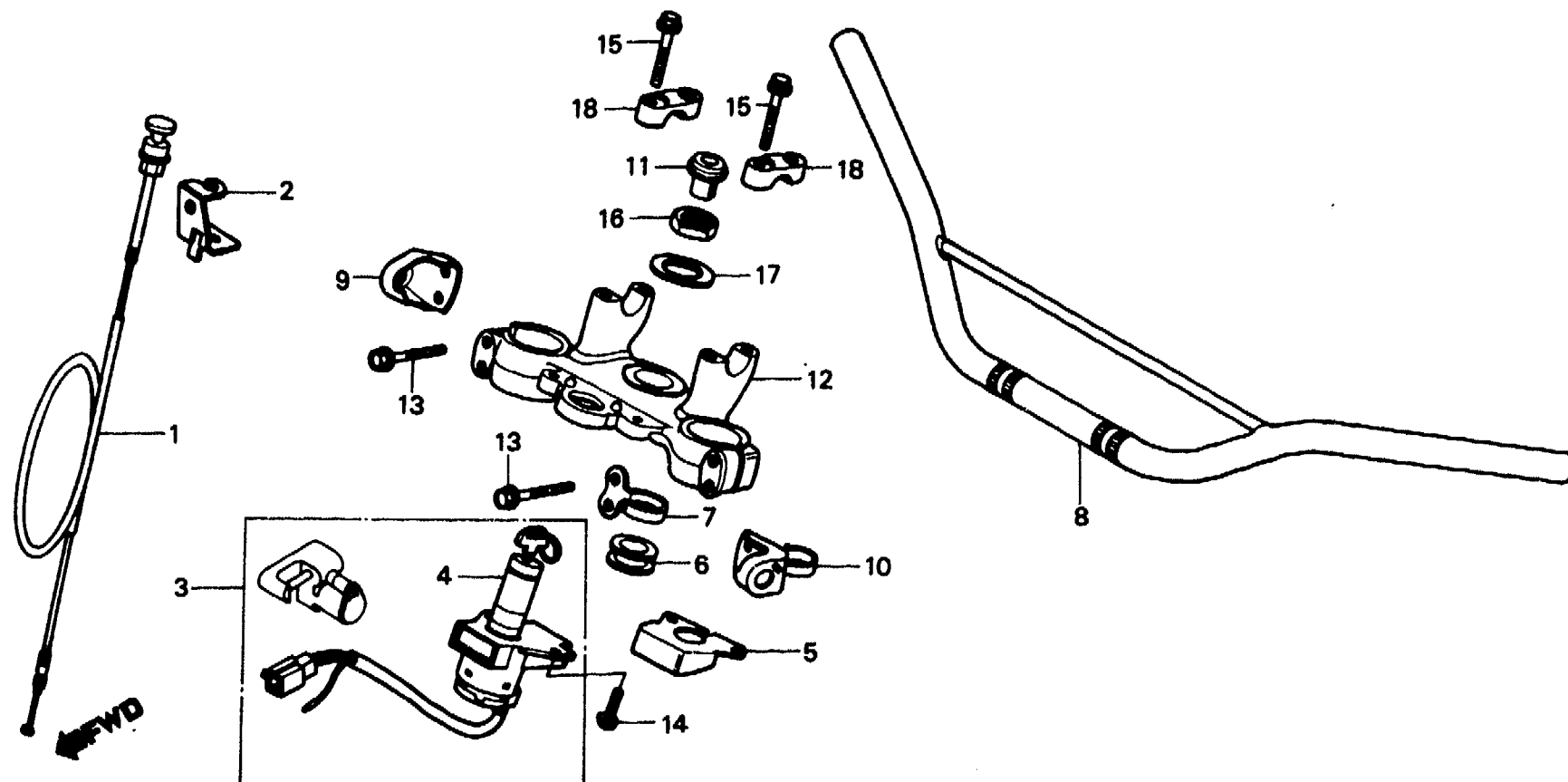
F-4-1

**Handle pipe • Top bridge
(XL250Rc)**

**Guidon • Haut de fourche
(XL250Rc)**

**Lenkrohr • Obere Brücke
(XL250Rc)**

**Tubo do manubrio •
Puente superior
(XL250Rc)**



BKB7-4

Service item	F.R.T.	Ref. No.	Part No.	Description	Reqd. No. XL250					Serial No.	Area code
					S	Sz	SA	Sb	Rc		
		10	53102-KB7-610	STAY, L. FR. WINKER SETTING					1		ED,G1,G2,SW
		11	53208-MC4-000	CAP, STEERING STEM					1		
		12	53230-KB7-000	BRIDGE, FORK TOP					1		
		13	90103-KB7-000	BOLT, FLANGE, 8X45					4		
		14	90105-KB7-000	BOLT, FLANGE, 8X19					2		B,CM,DK,DM,E,ED,F1,F2 IT,SA,SD,SW,U
			90105-MC7-610	BOLT, COMBINATION SWITCH SETTING					2		ED,G1,G2,SD
		15	90111-362-000	BOLT, FLANGE, 8X36					4		
		16	90304-425-000	NUT, STEERING STEM					1		
		17	90503-428-870	WASHER, STEERING STEM					1		
		18	95014-22200	HOLDER B2, HANDLE PIPE UPPER					2		

1982.01.10

E

J11

J 12

F-5

Steering stem • Front fender

(XL250S-Sz-SA-B,DK,DM,E,ED,
F1,F2,G1,G2,SA,SD,SW,U)

Tige de direction • Garde-boue avant

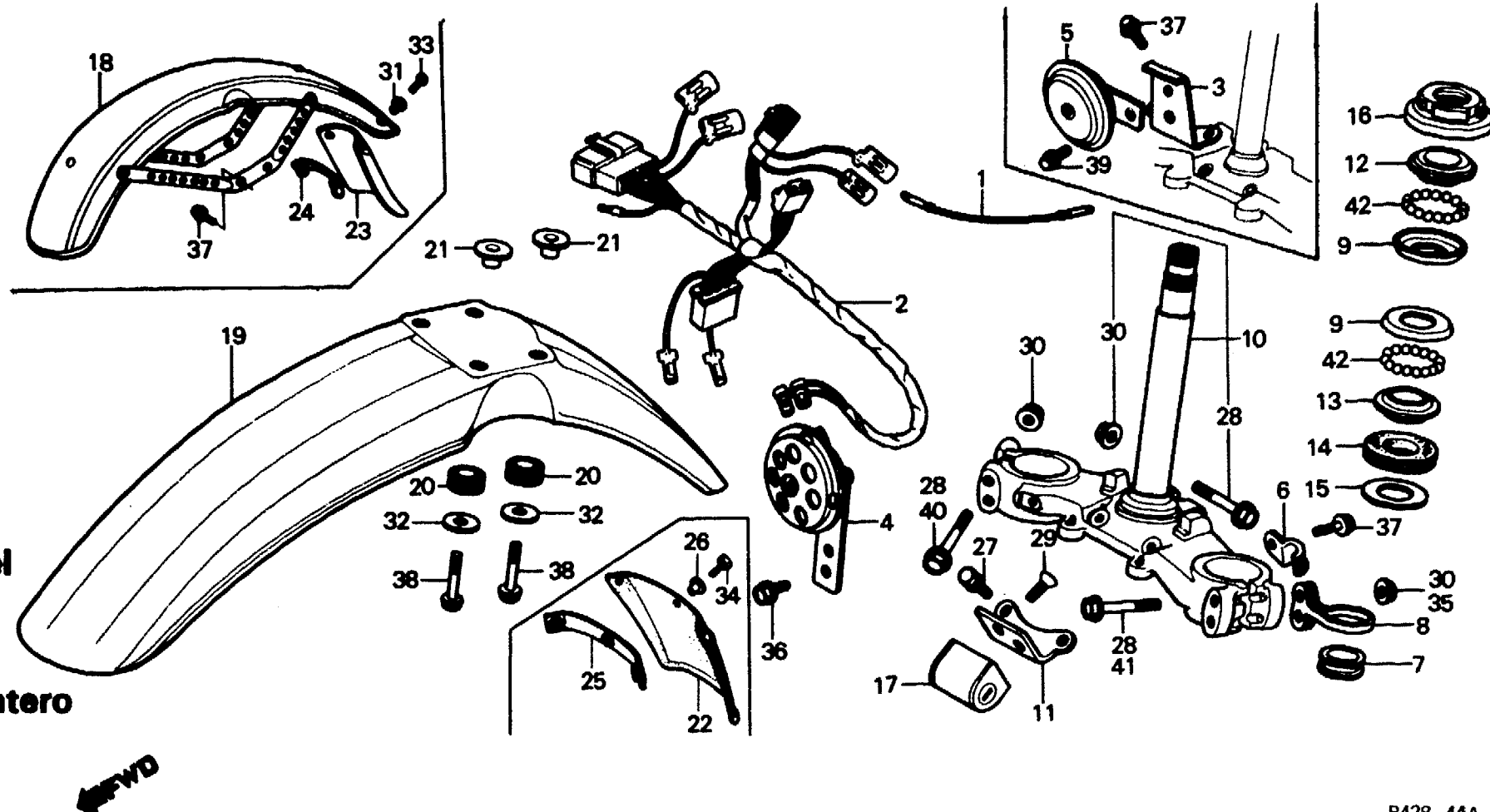
(XL250S-Sz-SA-B,DK,DM,E,ED,
F1,F2,G1,G2,SA,SD,SW,U)

Steuerkopfschaft • Vorderer Kotflügel

(XL250S-Sz-SA-B,DK,DM,E,ED,
F1,F2,G1,G2,SA,SD,SW,U)

Varilla de dirección • Parafango delantero

(XL250S-Sz-SA-B,DK,DM,E,ED,
F1,F2,G1,G2,SA,SD,SW,U)



B428-44A

Service item	F.R.T.	Ref. No.	Part No.	Description	Reqd. No.				Serial No.	Area code
					S	Sz	SA	Se Rc		
HARNESS A, SUB WIRE	0.3	1	32101-385-000	SUB CORD A (BROWN/WHITE)	1	1			CM	
HORN COMP.	0.1	2	32101-428-010	HARNESS A, SUB WIRE	1	1			CM	
FENDER COMP., FR.					1		1		B,DK,DM,E,ED,F,F1,F2 G,G1,G2,SA,SD,SW,U	
MUDGUARD, FR.									DK,E,ED,F,G,SA,SW	
RACE, STEERING TOP BALL (ONE OR ALL)	0.8	3	38102-428-600	STAY, HORN	1				CM,DK,DM,SA,U	
RACE, STEERING BOTTOM CONE		4	38110-428-004	HORN COMP.	1	1			DK,DM,SA,U	
STEM COMP., STEERING	1.2	5	38110-428-870	HORN ASSY.	1		1		B,E,ED,F,F1,F2,G,G1	
RACE, STEERING TOP CONE	0.5		38110-428-601	HORN COMP.	1		1		G2,SD,SW	
THREAD COMP., STEERING HEAD TOP		6	45465-428-000	CLAMP, SPEEDOMETER CABLE	1	1			CM	
LOCK COMP., STEERING HANDLE	0.6				1		1		B,DK,DM,E,ED,F,F1,F2 G,G1,G2,SA,SD,SW,U	
		7	45466-329-000	INNER, CABLE GUIDE	1	1			CM	
					1		1		B,DK,DM,E,ED,F,F1,F2 G,G1,G2,SA,SD,SW,U	
		8	45468-428-000	GUIDE B, BRAKE CABLE	1	1			CM	
					1		1		B,DK,DM,E,ED,F,F1,F2 G,G1,G2,SA,SD,SW,U	

J 13

F-5

Steering stem • Front fender

(XL250S-Sz-SA-B,DK,DM,E,ED,
F1,F2,G1,G2,SA,SD,SW,U)

Tige de direction • Garde-boue avant

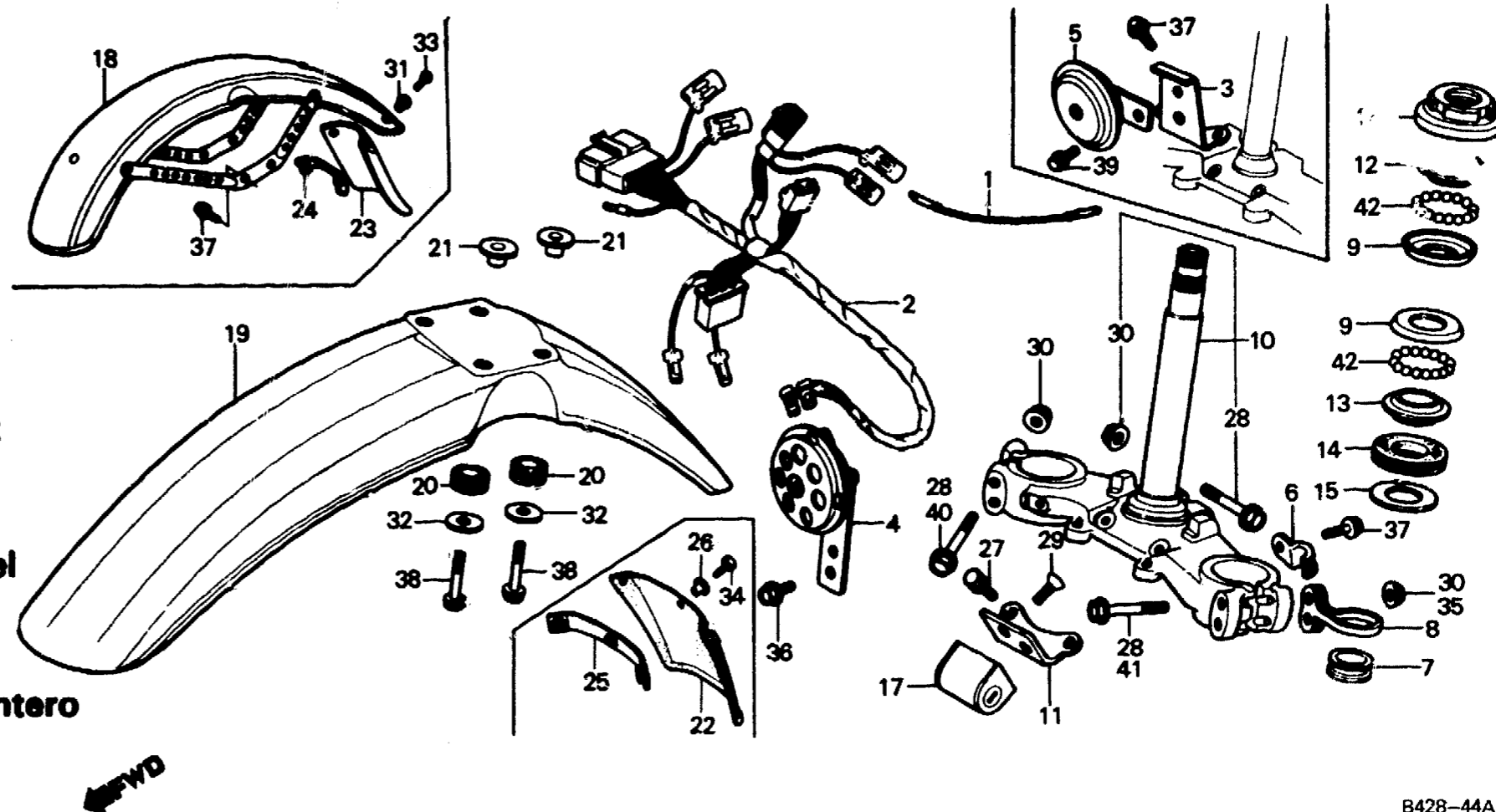
(XL250S-Sz-SA-B,DK,DM,E,ED,
F1,F2,G1,G2,SA,SD,SW,U)

Steuerkopfschaft • Vorderer Kotflügel

(XL250S-Sz-SA-B,DK,DM,E,ED,
F1,F2,G1,G2,SA,SD,SW,U)

Varilla de dirección • Parafango delantero

(XL250S-Sz-SA-B,DK,DM,E,ED,
F1,F2,G1,G2,SA,SD,SW,U)



B428-44A

Service item	F.R.T.	Ref. No.	Part No.	Description	Reqd. No.				Serial No.	Area code
					S	Sz	SA	SA Rc		
		9	50301-268-000	RACE, STEERING TOP BALL	2	2			CM	
					2		2		B,DK,DM,E,ED,F,F1,F2 G,G1,G2,SA,SD,SW,U	
		10	53200-428-000	STEM COMP., STEERING	1	1			CM,DK,DM,SA,U	
			53200-428-610	STEM COMP., STEERING	1				F	
			53200-428-611	STEM COMP., STEERING	1				E,ED,G,SW	
			53200-428-871	STEM COMP., STEERING			1		DK,DM,SA,U	
			53200-428-921	STEM COMP., STEERING			1		B,E,ED,F1,F2,G1,G2,SD SW	
		11	53203-428-000	HOLDER, HANDLE LOCK	1	1			CM,DK,DM,SA,U	
		12	53211-268-000	RACE, STEERING TOP CONE	1	1			CM	
					1		1		B,DK,DM,E,ED,F,F1,F2 G,G1,G2,SA,SD,SW,U	
		13	53212-200-000	RACE, STEERING BOTTOM CONE	1	1			CM	
					1		1		B,DK,DM,E,ED,F,F1,F2 G,G1,G2,SA,SD,SW,U	
		14	53214-200-000	DUST SEAL, STEERING HEAD	1	1			CM	
					1		1		B,DK,DM,E,ED,F,F1,F2 G,G1,G2,SA,SD,SW,U	

J 14

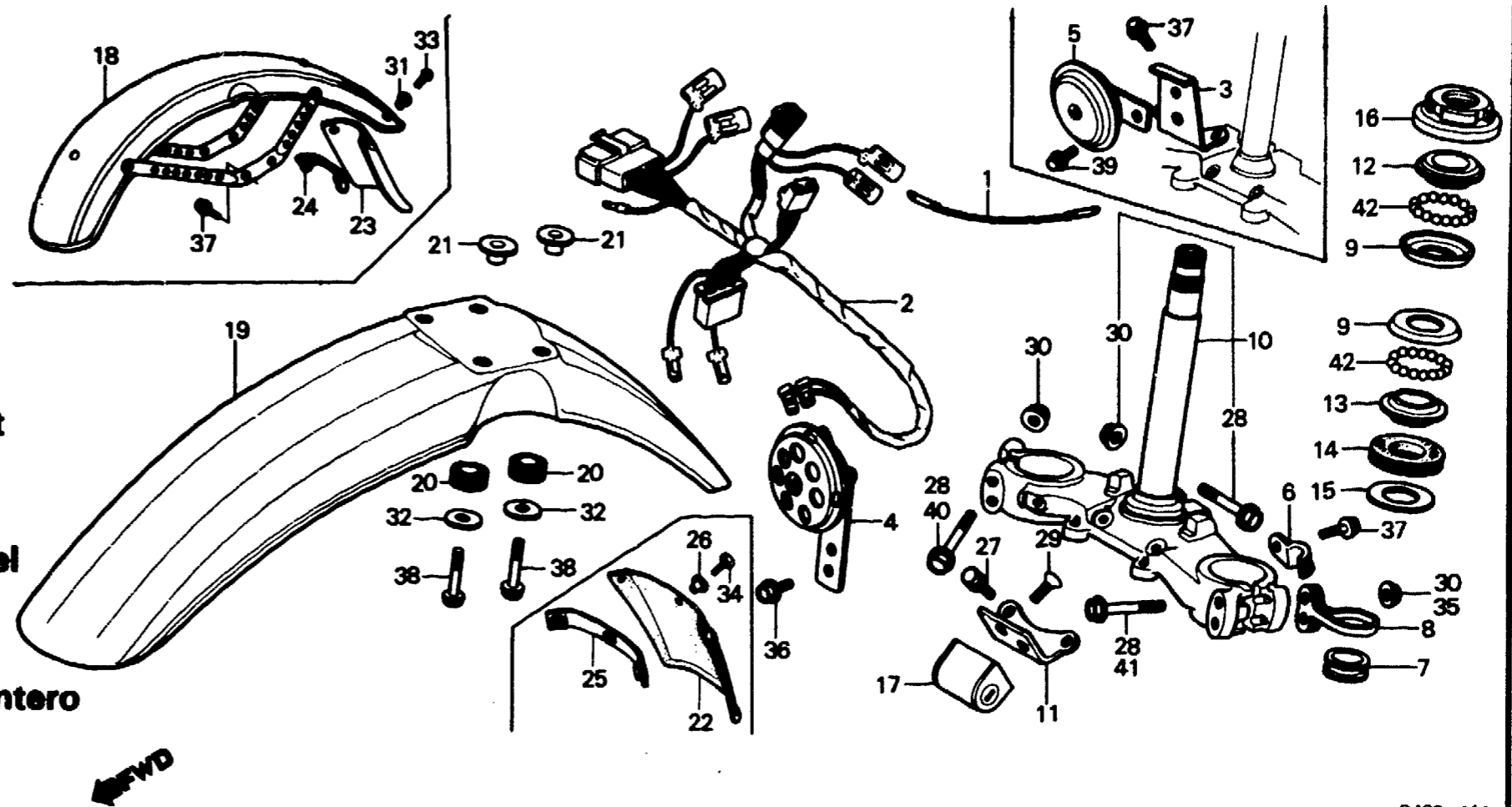
F-5

Steering stem • Front fender
(XL250S•Sz•SA•B,DK,DM,E,ED,
F1,F2,G1,G2,SA,SD,SW,U)

Tige de direction • Garde-boue avant
(XL250S•Sz•SA•B,DK,DM,E,ED,
F1,F2,G1,G2,SA,SD,SW,U)

Steuerkopfschaft • Vorderer Kotflügel
(XL250S•Sz•SA•B,DK,DM,E,ED,
F1,F2,G1,G2,SA,SD,SW,U)

Varilla de dirección • Parafango delantero
(XL250S•Sz•SA•B,DK,DM,E,ED,
F1,F2,G1,G2,SA,SD,SW,U)



B428-44A

Service item	F.R.T.	Ref. No.	Part No.	Description	Reqd. No.				Serial No.	Area code
					S	Sz	SA	Sa		
		15	53215-200-000	WASHER, STEERING HEAD DUST SEAL	1	1				CM B,DK,DM,E,ED,F,F1,F2 G,G1,G2,SA,SD,SW,U
		16	53220-286-000	THREAD COMP., STEERING HEAD TOP	1	1				CM B,DK,DM,E,ED,F,F1,F2 G,G1,G2,SA,SD,SW,U
		17	53600-126-921	LOCK COMP., STEERING HANDLE	1	1				CM
		18	61100-428-610ZA	FENDER COMP., FR. *R-23*	1		1			DK,DM,SA,U
			61100-428-610ZB	FENDER COMP., FR. *PB-104*	1					G,SW ED,SD
			61100-428-610ZC	FENDER COMP., FR. *NH-24*	1		1			G,SW
		19	61100-428-670ZA	FENDER, FR. *R-23*	1	1				ED,SD
			61100-428-670ZB	FENDER, FR. *PB-104*	1					CM,DK,DM,E,ED,F,SA,U
			61100-428-670ZC	FENDER, FR. *NH-24*	1					CM,DK,DM,E,ED,F,SA,U
			61100-428-920ZA	FENDER, FR. *R-23*				1		CM,DK,DM,E,ED,F,SA,U B,DK,DM,E,F1,F2,G1,G2 SA,U

1982.01.10

E

J14

J 15

F-5

Steering stem • Front fender

(XL250S-Sz-SA-B,DK,DM,E,ED,
F1,F2,G1,G2,SA,SD,SW,U)

Tige de direction • Garde-boue avant

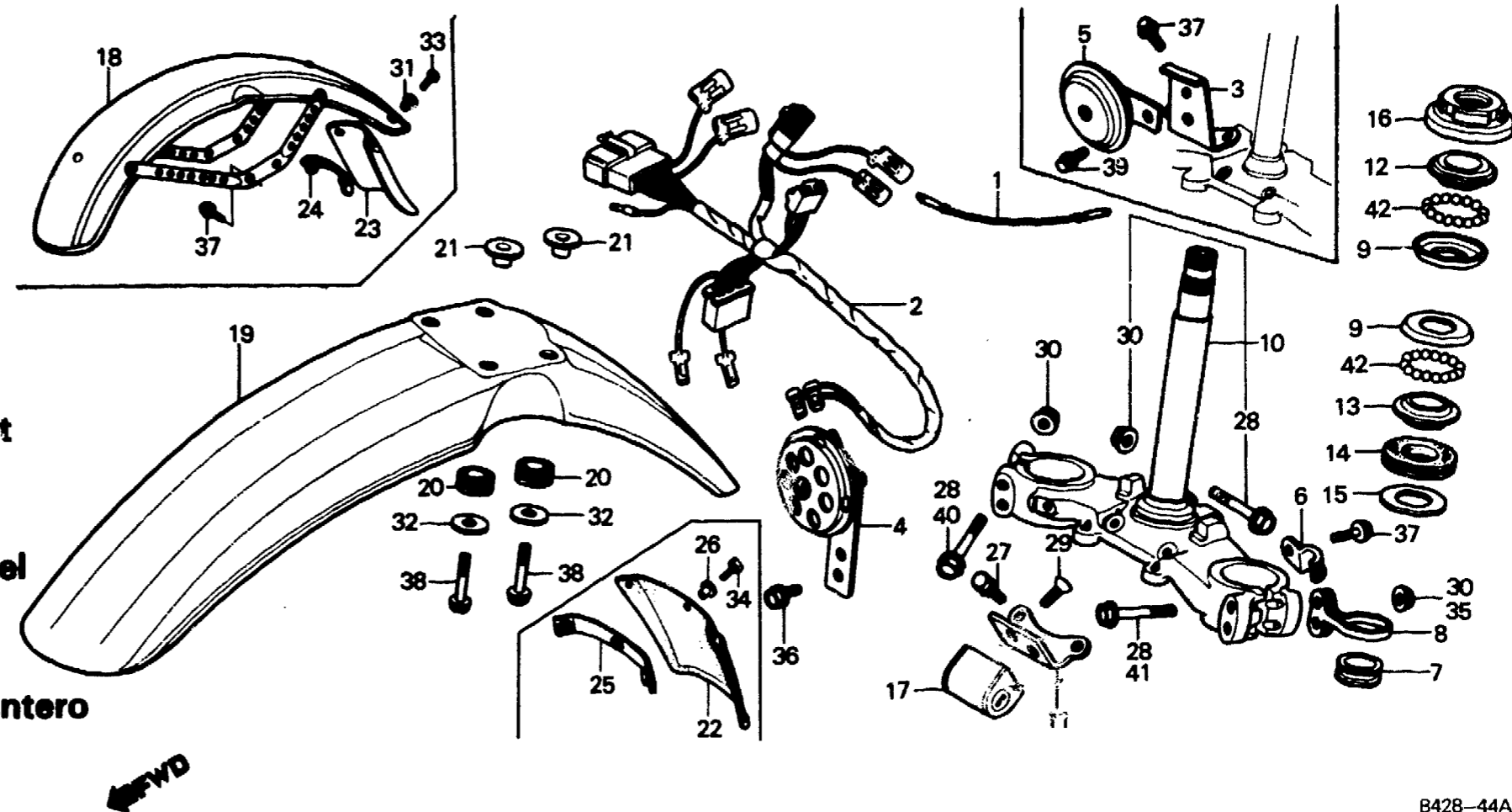
(XL250S-Sz-SA-B,DK,DM,E,ED,
F1,F2,G1,G2,SA,SD,SW,U)

Steuerkopfschaft • Vorderer Kotflügel

(XL250S-Sz-SA-B,DK,DM,E,ED,
F1,F2,G1,G2,SA,SD,SW,U)

Varilla de dirección • Parafango delantero

(XL250S-Sz-SA-B,DK,DM,E,ED,
F1,F2,G1,G2,SA,SD,SW,U)



B428-44A

Service item	F.R.T.	Ref. No.	Part No.	Description	Reqd. No.				Serial No.	Area code
					S	Sz	SA	Sb		
			61100-428-920ZB	FENDER, FR. *NH-24*					1	B,DK,DM,E,F1,F2,G1,G2 SA,U
		20	61103-357-000	RUBBER, FR. FENDER MOUNTING	4	4			4	CM,ED B,DK,DM,E,F,F1,F2,G1 G2,SA,SD,U
		21	61104-428-000	COLLAR, FR. FENDER	4	4			4	CM,ED B,DK,DM,E,F,F1,F2,G1 G2,SA,SD,U
		22	61104-428-920	MUDGUARD, FR.					1	G1,G2
		23	61105-428-640	MUDGUARD, FR.	1				1	SW
		24	61106-428-690	PLATE, FR. MUDGUARD	1				1	ED,SD SW
		25	61106-428-920	PLATE, FR. FENDER					1	ED,SD G1,G2
		26	61304-292-000	COLLAR, HEADLIGHT SETTING					3	G1,G2
		27	90105-428-000	BOLT, SPECIAL, 6MM	2	2				CM,DK,DM,SA,U

1982.01.10

E

J15

J 16

F-5

Steering stem • Front fender

(XL250S•Sz•SA•B,DK,DM,E,ED.)
(F1,F2,G1,G2,SA,SD,SW,U)

Tige de direction • Garde-boue avant

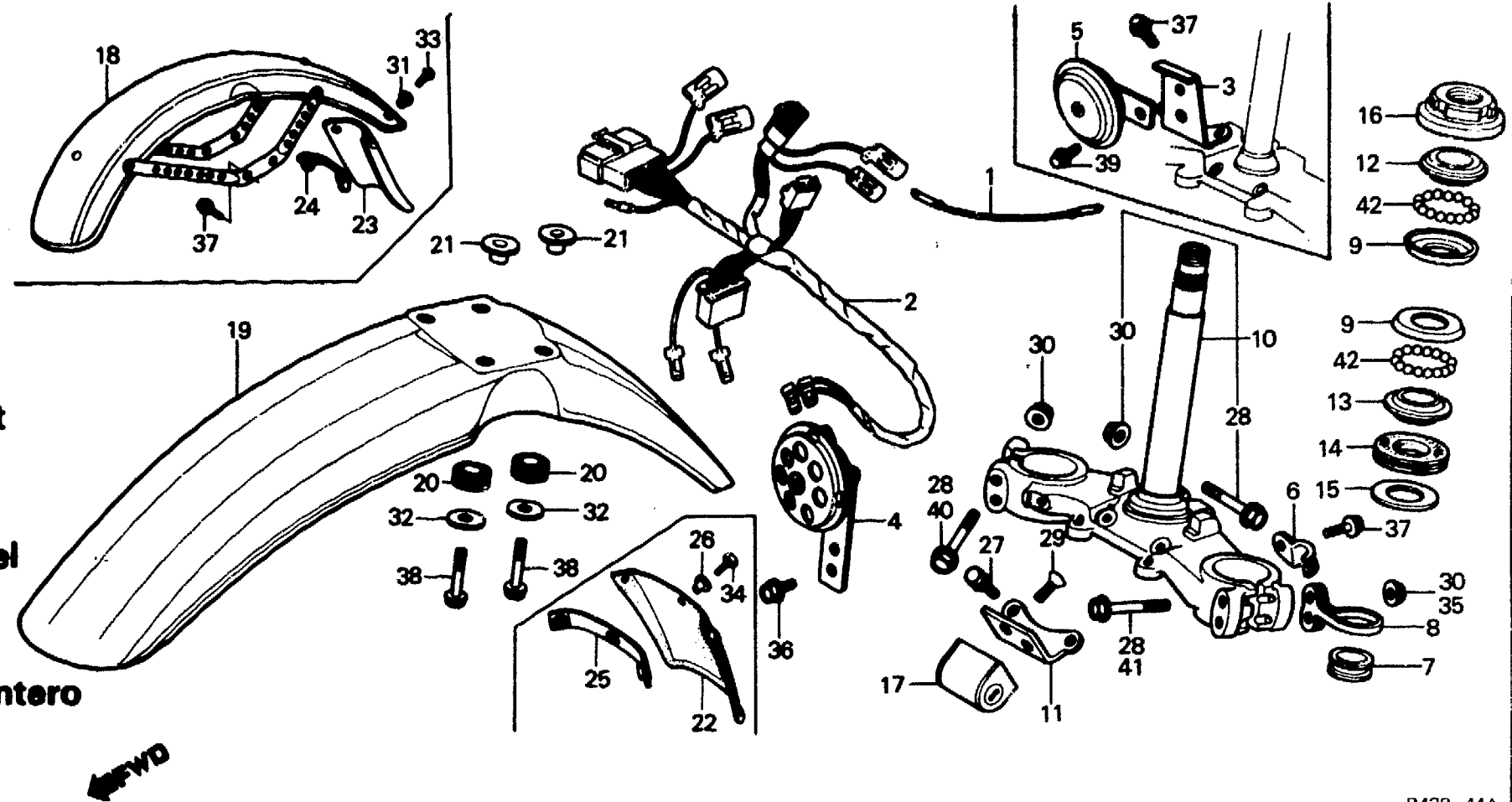
(XL250S•Sz•SA•B,DK,DM,E,ED.)
(F1,F2,G1,G2,SA,SD,SW,U)

Steuerkopfschaft • Vorderer Kotflügel

(XL250S•Sz•SA•B,DK,DM,E,ED.)
(F1,F2,G1,G2,SA,SD,SW,U)

Varilla de dirección • Parafango delantero

(XL250S•Sz•SA•B,DK,DM,E,ED.)
(F1,F2,G1,G2,SA,SD,SW,U)



B428-44A

Service Item	F.R.T.	Ref. No.	Part No.	Description	Reqd. No.				Serial No.	Area code
					S	Sz	SA	Sb		
		28	90125-428-000	BOLT, FLANGE, 8X57	5	5				CM B,DK,DM,E,ED,F,F1,F2 G,G1,G2,SA,SD,SW,U
		29	90164-028-000	SCREW, U-LOCK FLAT, 6X12	2	2				CM DK,DM,SA,U
		30	90303-369-000	NUT, FLANGE, 8MM	5	5				CM B,DK,DM,E,ED,F,F1,F2 G,G1,G2,SA,SD,SW,U
		31	90520-134-000	WASHER, HEADLIGHT CASE SETTING	2		2			SW
		32	90545-292-000	WASHER, 6.5X20	4	4				CM,ED B,DK,DM,E,F,F1,F2,G1 G2,SA,SD,U
		33	93500-05012-0A	SCREW, PAN, 5X12	2		2			SW
		34	93500-05016-0A	SCREW, PAN, 5X16			3			G1,G2
		35	94050-08000	NUT, FLANGE, 8MM			2			B,DK,DM,E,ED,F1,F2,G1 G2,SA,SD,SW,U

K 1

F-5

Steering stem • Front fender

(XL250S-Sz-SA-B,DK,DM,E,ED,
F1,F2,G1,G2,SA,SD,SW,U)

Tige de direction • Garde-boue avant

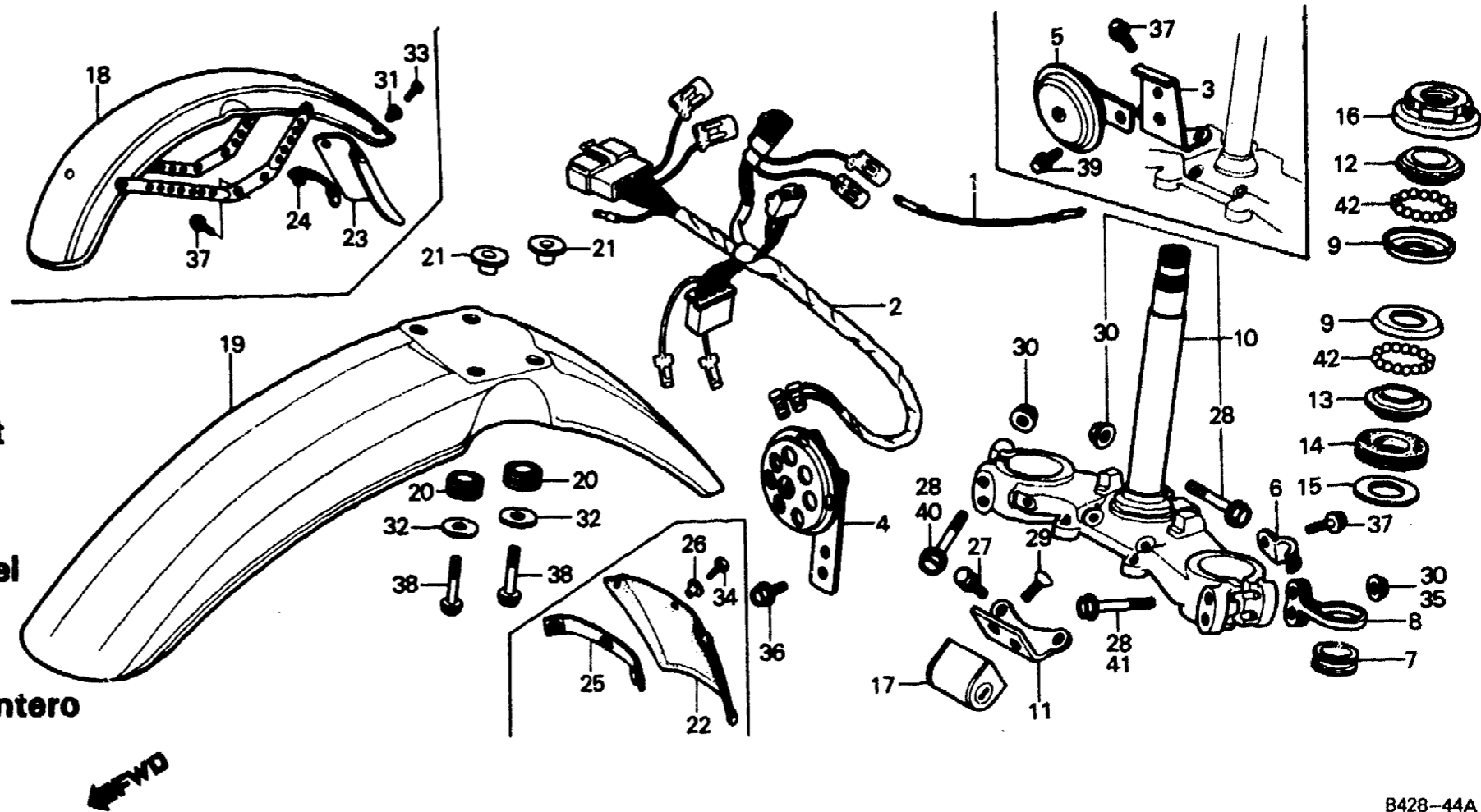
(XL250S-Sz-SA-B,DK,DM,E,ED,
F1,F2,G1,G2,SA,SD,SW,U)

Steuerkopfschaft • Vorderer Kotflügel

(XL250S-Sz-SA-B,DK,DM,E,ED,
F1,F2,G1,G2,SA,SD,SW,U)

Varilla de dirección • Parafango delantero

(XL250S-Sz-SA-B,DK,DM,E,ED,
F1,F2,G1,G2,SA,SD,SW,U)



B428-44A

Service item	F.R.T.	Ref. No.	Part No.	Description	Reqd. No.					Serial No.	Area code
					S	Sz	SA	SB	Rc		
		36	95700-06010-00	BOLT, FLANGE, 6X10	1	1					CM B,DK,DM,E,ED,F,F1,F2 G,G1,G2,SA,SD,SW,U
		37	95700-06012-00	BOLT, FLANGE, 6X12	1	1					CM E,F ED,G1,G2 G,SW
		38	95700-06025-00	BOLT, FLANGE, 6X25	1	1					B,DK,DM,F1,F2,SA,SD,U CM,ED
		39	95700-08012-00	BOLT, FLANGE, 8X12	1	1					B,DK,DM,E,F,F1,F2,G1 G2,SA,SD,U
		40	95700-08032-00	BOLT, FLANGE, 8X32					2		B,DK,DM,E,ED,F1,F2,G1 G2,SA,SD,SW,U
		41	95700-08050-00	BOLT, FLANGE, 8X50					2		B,DK,DM,E,ED,F1,F2,G1 G2,SA,SD,SW,U
		42	96211-08000	BALL, STEEL, #8 (1/4)	36	36					CM B,DK,DM,E,ED,F,F1,F2 G,G1,G2,SA,SD,SW,U

1982.01.10

E

K1

K 2

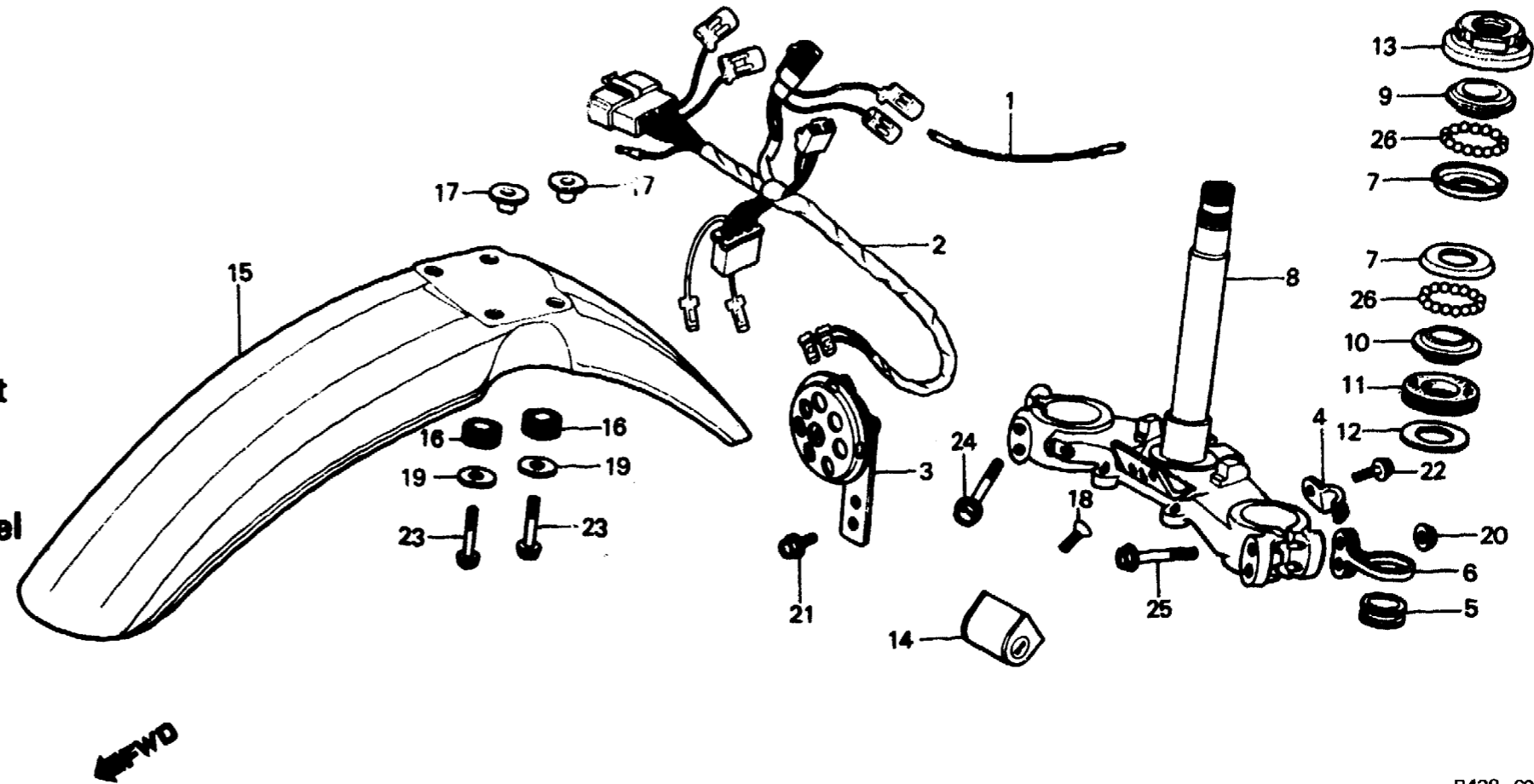
F-5-1

**Steering stem • Front fender
(XL250SA,SB-CM)**

**Tige de direction • Garde-boue avant
(XL250SA,SB-CM)**

**Steuerkopfschaft • Vorderer Kotflügel
(XL250SA,SB-CM)**

**Varilla de dirección •
Parafango delantero
(XL250SA,SB-CM)**



B428-69

Service item	F.R.T.	Ref. No.	Part No.	Description	Reqd. No.				Serial No.	Area code	
					XL250						
					S	Sz	SA	Sb	Rc		
HARNESS A, SUB WIRE	0.3	1	32101-385-000	SUB CORD A (BROWN/WHITE)	1		1				CM
HORN ASSY.	0.1	2	32101-428-010	HARNESS A, SUB WIRE	1		1				CM
FENDER, FR.		3	38110-428-870	HORN ASSY.	1		1				CM
RACE, STEERING TOP BALL (ONE OR ALL)	0.8	4	45465-428-000	CLAMP, SPEEDOMETER CABLE	1		1				CM
RACE, STEERING BOTDOM CONE		5	45466-329-000	INNER, CABLE GUIDE	1		1				CM
STEM COMP., STEERING	1.2	6	45468-428-000	GUIDE B, BRAKE CABLE	1		1				CM
RACE, STEERING TOP CONE	0.5	7	50301-268-000	RACE, STEERING TOP BALL	2		2				CM
THREAD COMP., STEERING HEAD TOP		8	53200-428-871	STEM COMP., STEERING	1		1				CM
LOCK COMP., STEERING HANDLE	0.6	9	53211-268-000	RACE, STEERING TOP CONE	1		1				CM
		10	53212-200-000	RACE, STEERING BOTDOM CONE	1		1				CM
		11	53214-200-000	DUST SEAL, STEERING HEAD	1		1				CM
		12	53215-200-000	WASHER, STEERING HEAD	1		1				CM
				DUST SEAL							

K 3

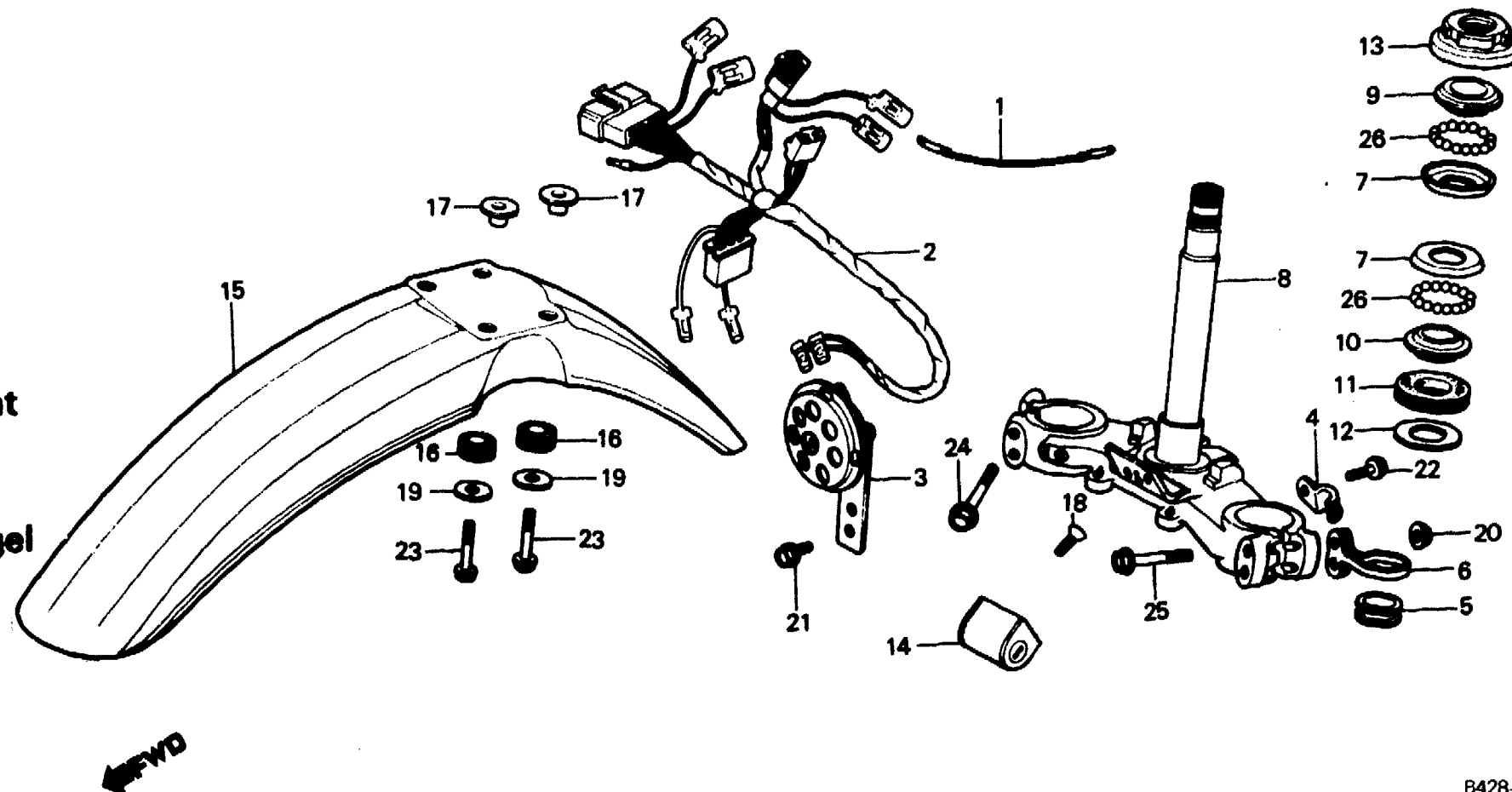
F-5-1

**Steering stem • Front fender
(XL250SA,SB-CM)**

**Tige de direction • Garde-boue avant
(XL250SA,SB-CM)**

**Steuerkopfschaft • Vorderer Kotflügel
(XL250SA,SB-CM)**

**Varilla de dirección •
Parafango delantero
(XL250SA,SB-CM)**



B428-69

Service item	F.R.T.	Ref. No.	Part No.	Description	Reqd. No.				Serial No.	Area code
					S	Sz	SA	Sb		
		13	53220-286-000	THREAD COMP., STEERING HEAD TOP			1	1		CM
		14	53600-126-921	LOCK COMP., STEERING HANDLE			1	1		CM
		15	61100-428-670ZD	FENDER, FR. *R-33*			1			CM
			61100-428-840ZC	FENDER, FR. *R-110*				1		CM
		16	61103-357-000	RUBBER, FR. FENDER MOUNTING			4	4		CM
		17	61104-428-000	COLLAR, FR. FENDER			4	4		CM
		18	90164-028-000	SCREW, U-LOCK FLAT, 6X12			2	2		CM
		19	90545-292-000	WASHER, 6.5X20			4	4		CM
		20	94050-08000	NUT, FLANGE, 8MM			2	2		CM
		21	95700-06010-00	BOLT, FLANGE, 6X10			1	1		CM
		22	95700-06012-00	BOLT, FLANGE, 6X12			1	1		CM
		23	95700-06025-00	BOLT, FLANGE, 6X25			4	4		CM
		24	95700-08032-00	BOLT, FLANGE, 8X32			2	2		CM
		25	95700-08050-00	BOLT, FLANGE, 8X50			2	2		CM

K 4

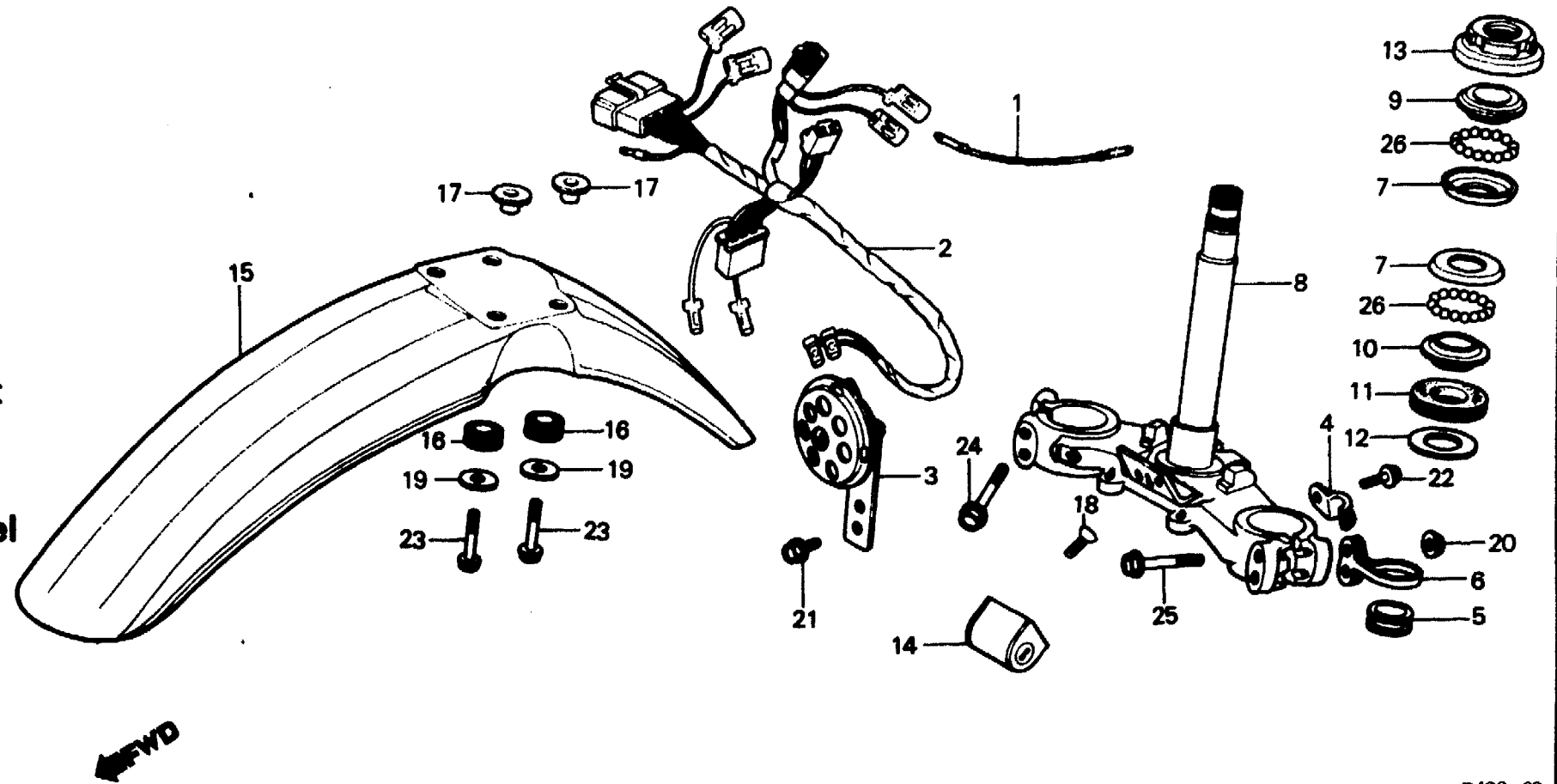
F-5-1

**Steering stem • Front fender
(XL250SA,SB-CM)**

**Tige de direction • Garde-boue avant
(XL250SA,SB-CM)**

**Steuerkopfschaft • Vorderer Kotflügel
(XL250SA,SB-CM)**

**Varilla de dirección •
Parafango delantero
(XL250SA,SB-CM)**



B428-69

Service item	F.R.T.	Ref. No.	Part No.	Description	Reqd. No.				Serial No.	Area code
					S	Sz	SA	Sb		
		26	96211-08000	BALL, STEEL, #8 (1/4)			36	36		CM

1982.01.10

E

K4

K 5

F-5-2

Steering stem - Front fender

(XL250s-B,DK,DM,E,ED,F1,
F2,G1,G2,SA,SD,SW,U)

Tige de direction - Garde-boue avant

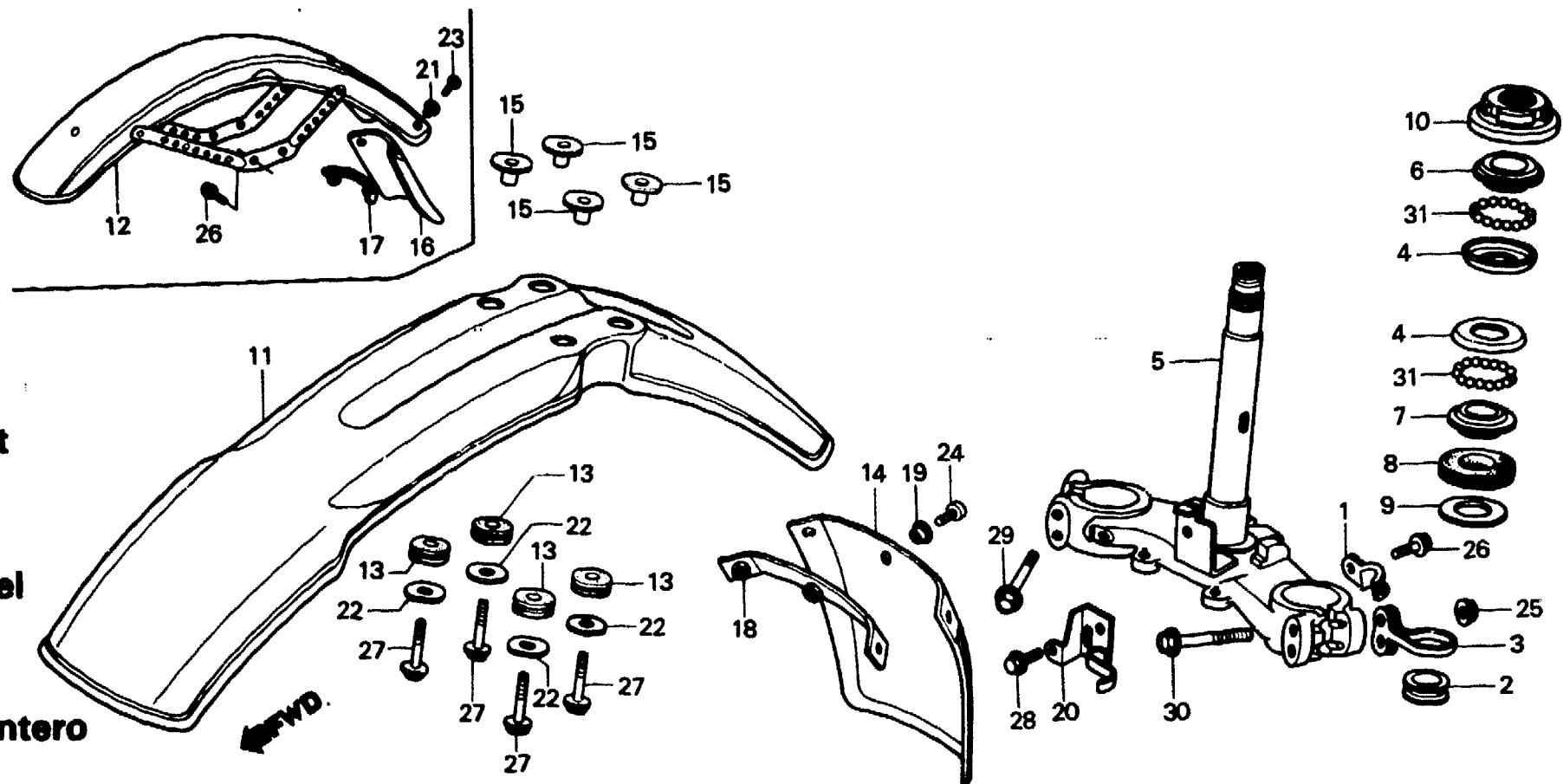
(XL250s-B,DK,DM,E,ED,F1,
F2,G1,G2,SA,SD,SW,U)

Steuerkopfschaft - Vorderer Kotflügel

(XL250s-B,DK,DM,E,ED,F1,
F2,G1,G2,SA,SD,SW,U)

Varilla de dirección - Parafango delantero

(XL250s-B,DK,DM,E,ED,F1,
F2,G1,G2,SA,SD,SW,U)



B428-80

Service item	F.R.T.	Ref. No.	Part No.	Description	Reqd. No.					Serial No.	Area code
					S	Sz	SA	Sb	Rc		
RACE, STEERING TOP BALL (ONE OR ALL)	0.8	1	45465-428-000	CLAMP, SPEEDOMETER CABLE					1		B,DK,DM,E,ED,F1,F2,G1 G2,SA,SD,SW,U
RACE, STEERING BOTTOM CONE		2	45466-329-000	INNER, CABLE GUIDE					1		B,DK,DM,E,ED,F1,F2,G1 G2,SA,SD,SW,U
STEM COMP., STEERING	1.2										
RACE, STEERING TOP CONE	0.5	3	45468-428-000	GUIDE B, BRAKE CABLE					1		B,DK,DM,E,ED,F1,F2,G1 G2,SA,SD,SW,U
THREAD COMP., STEERING HEAD TOP		4	50301-268-000	RACE, STEERING TOP BALL					2		B,DK,DM,E,ED,F1,F2,G1 G2,SA,SD,SW,U
FENDER, FR.	0.1	5	53200-428-921	STEM COMP., STEERING					1		B,DK,DM,E,ED,F1,F2,G1 G2,SA,SD,SW,U
MUDGUARD, FR.		6	53211-268-000	RACE, STEERING TOP CONE					1		B,DK,DM,E,ED,F1,F2,G1 G2,SA,SD,SW,U
		7	53212-200-000	RACE, STEERING BOTTOM CONE					1		B,DK,DM,E,ED,F1,F2,G1 G2,SA,SD,SW,U
		8	53214-200-000	DUST SEAL, STEERING HEAD					1		B,DK,DM,E,ED,F1,F2,G1 G2,SA,SD,SW,U
		9	53215-200-000	WASHER, STEERING HEAD					1		B,DK,DM,E,ED,F1,F2,G1 G2,SA,SD,SW,U
		10	53220-286-000	DUST SEAL THREAD COMP., STEERING HEAD TOP					1		B,DK,DM,E,ED,F1,F2,G1 G2,SA,SD,SW,U

1982.01.10

E

K5



F-5-2

Steering stem • Front fender

(XL250S_B-B,DK,DM,E,ED,F1,
F2,G1,G2,SA,SD,SW,U)

Tige de direction • Garde-boue avant

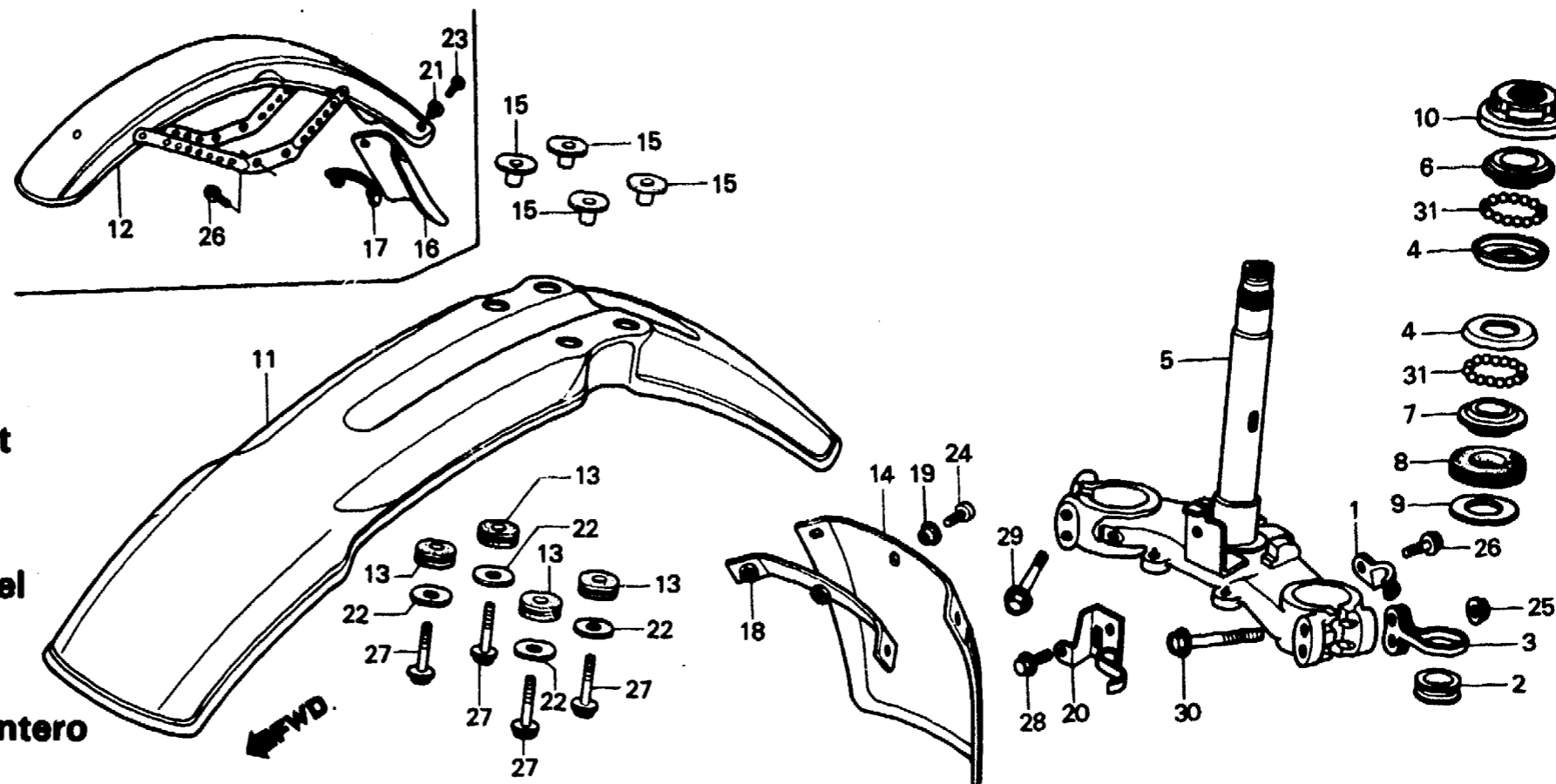
(XL250S_B-B,DK,DM,E,ED,F1,
F2,G1,G2,SA,SD,SW,U)

Steuerkopfschaft • Vorderer Kotflügel

(XL250S_B-B,DK,DM,E,ED,F1,
F2,G1,G2,SA,SD,SW,U)

Varilla de dirección • Parafango delantero

(XL250S_B-B,DK,DM,E,ED,F1,
F2,G1,G2,SA,SD,SW,U)



B428-80

Service item	F.R.T.	Ref. No.	Part No.	Description	Reqd. No.					Serial No.	Area code
					S	Sz	SA	Sb	Rc		
		11	61100-428-830ZA	FENDER, FR. *R-110*					1		B,DK,DM,E,F1,F2,G1,G2 SA,U
			61100-428-830ZC	FENDER, FR. *NH-111*					1		B,DK,DM,E,F1,F2,G1,G2 SA,U
			61100-428-830ZD	FENDER, FR. *NH-104M-U*					1		B,DK,DM,E,F1,F2,G1,G2 SA,U
		12	61100-428-860ZA	FENDER, FR. *R-110*					1		ED,SD,SW
			61100-428-860ZB	FENDER, FR. *NH-104M-U*					1		ED,SD,SW
			61100-428-860ZD	FENDER, FR. *NH-111*					1		ED,SD,SW
		13	61103-357-000	RUBBER, FR. FENDER MOUNTING					4		B,DK,DM,E,F1,F2,G1,G2 SA,SD,U
		14	61104-428-920	MUDGUARD, FR.					1		G1,G2
		15	61104-429-770	COLLAR, FR. FENDER					4		B,DK,DM,E,F1,F2,G1,G2 SA,SD,U
		16	61105-428-640	MUDGUARD, FR.					1		ED,SD,SW
		17	61106-428-690	PLATE, FR. MUDGUARD					1		ED,SD,SW
		18	61106-428-920	PLATE, FR. FENDER					1		G1,G2
		19	61304-292-000	COLLAR, HEADLIGHT SETTING					3		G1,G2

1982.01.10

E

K6

K 7

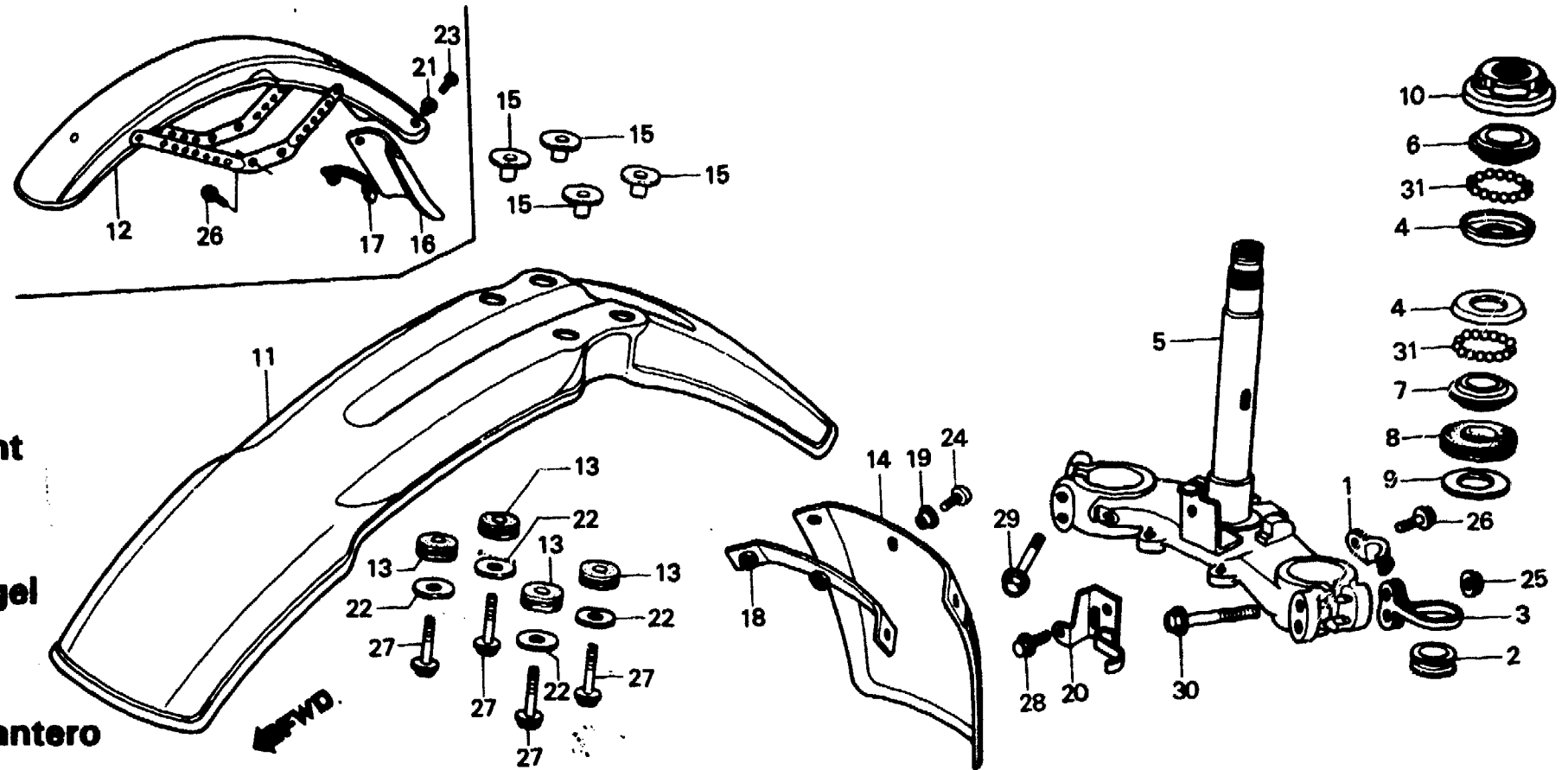
F-5-2

Steering stem • Front fender
(XL250S_B-B,DK,DM,E,ED,F1,
F2,G1,G2,SA,SD,SW,U)

Tige de direction • Garde-boue avant
(XL250S_B-B,DK,DM,E,ED,F1,
F2,G1,G2,SA,SD,SW,U)

Steuerkopfschaft • Vorderer Kotflügel
(XL250S_B-B,DK,DM,E,ED,F1,
F2,G1,G2,SA,SD,SW,U)

Varilla de dirección • Parafango delantero
(XL250S_B-B,DK,DM,E,ED,F1,
F2,G1,G2,SA,SD,SW,U)



B428-80

Service item	F.R.T.	Ref. No.	Part No.	Description	Reqd. No.					Serial No.	Area code
					S	Sz	SA	Sb	Rc		
		20	61312-428-830	STAY, HEADLIGHT LOWER					1		B,DK,DM,E,ED,F1,F2,G1 G2,SA,SD,SW,U
		21	90520-134-000	WASHER, HEADLIGHT CASE SETTING					2		ED,SW
		22	90545-292-000	WASHER, 6.5X20					4		B,DK,DM,E,F1,F2,G1,G2 SA,SD,U
		23	93500-05012-0A	SCREW, PAN, 5X12					2		ED,SW
		24	93500-05016-0A	SCREW, PAN, 5X16					3		G1,G2
		25	94050-08000	NUT, FLANGE, 8MM					2		B,DK,DM,E,ED,F1,F2,G1 G2,SA,SD,SW,U
		26	95700-06012-00	BOLT, FLANGE, 6X12					1		B,DK,DM,E,F1,F2,G1,G2 SA,U
		27	95700-06025-00	BOLT, FLANGE, 6X25					3		ED,SD,SW
		28	95700-08012-00	BOLT, FLANGE, 8X12					4		B,DK,DM,E,F1,F2,G1,G2 SA,U
		29	95700-08032-00	BOLT, FLANGE, 8X32					1		B,DK,DM,E,ED,F1,F2,G1 G2,SA,SD,SW,U
									2		B,DK,DM,E,ED,F1,F2,G1 G2,SA,SD,SW,U

1982.01.10

E

K7

K 8

F-5-2

Steering stem • Front fender

(XL250S_B-B,DK,DM,E,ED,F1,
F2,G1,G2,SA,SD,SW,U)

Tige de direction • Garde-boue avant

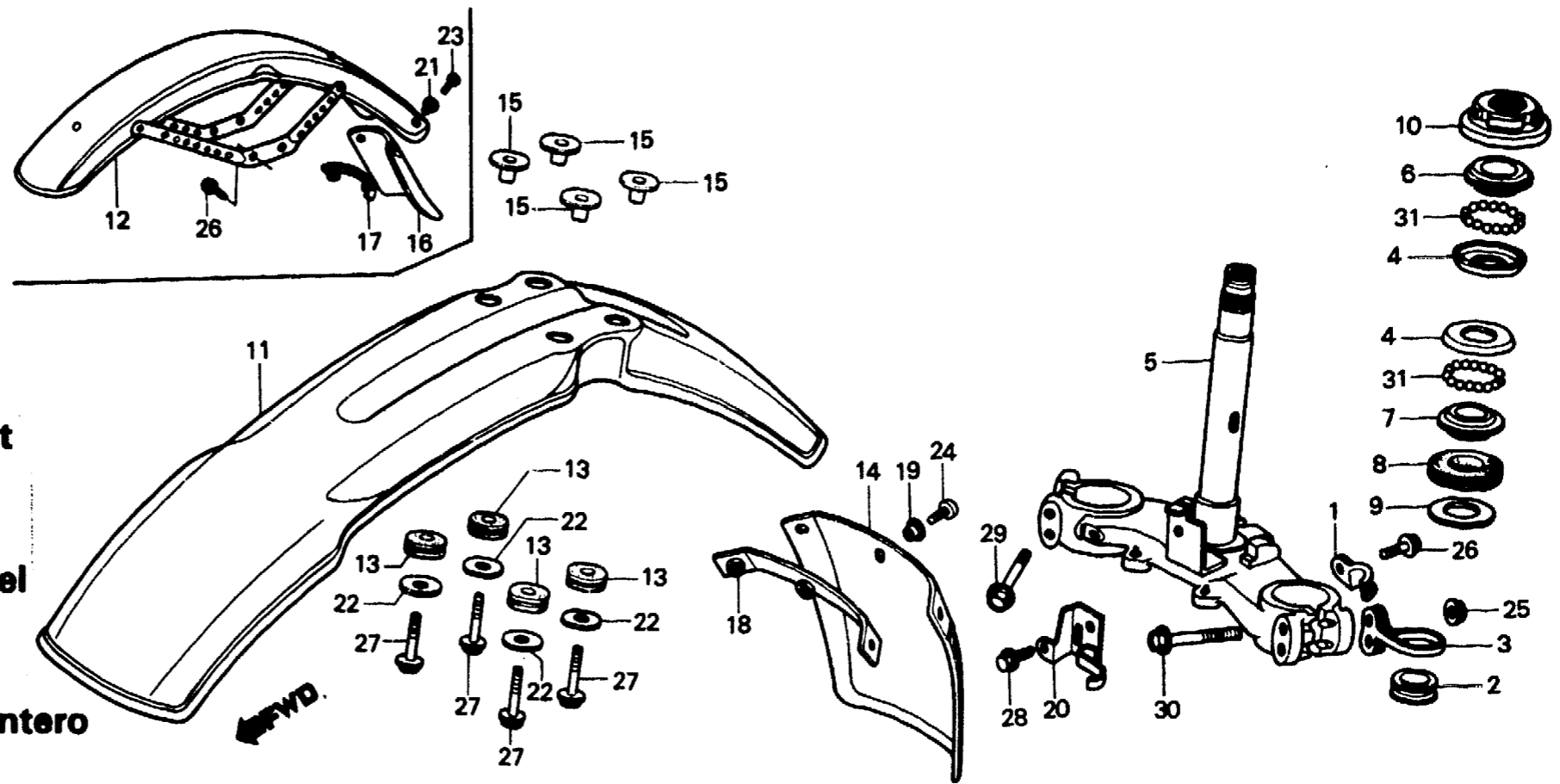
(XL250S_B-B,DK,DM,E,ED,F1,
F2,G1,G2,SA,SD,SW,U)

Steuerkopfschaft • Vorderer Kotflügel

(XL250S_B-B,DK,DM,E,ED,F1,
F2,G1,G2,SA,SD,SW,U)

Varilla de dirección • Parafango delantero

(XL250S_B-B,DK,DM,E,ED,F1,
F2,G1,G2,SA,SD,SW,U)



B428-80

Service item	F.R.T.	Ref. No.	Part No.	Description	Reqd. No.					Serial No.	Area code
					S	Sz	SA	S _B	Rc		
		30	95700-08050-00	BOLT, FLANGE, 8X50				2			B,DK,DM,E,ED,F1,F2,G1 G2,SA,SD,SW,U
		31	96211-08000	BALL, STEEL, #8 (1/4)				36			B,DK,DM,E,ED,F1,F2,G1 G2,SA,SD,SW,U

K 9

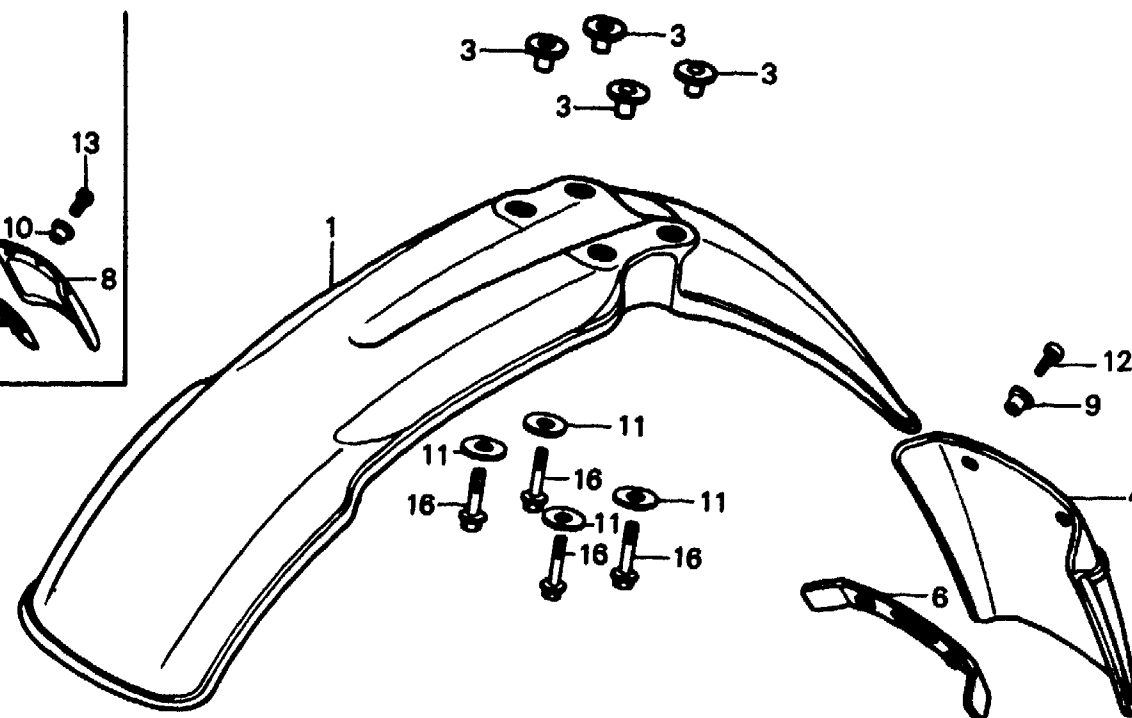
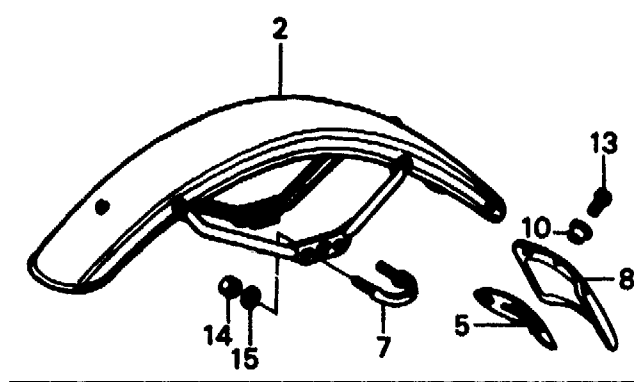
F-6

**Front fender
(XL250Rc)**

**Garde-boue avant
(XL250Rc)**

**Vorderer Kotflügel
(XL250Rc)**

**Parafango delantero
(XL250Rc)**



FWD

BMC4-26

Service item	F.R.T.	Ref. No.	Part No.	Description	Reqd. No.					Serial No.	Area code
					S	Sz	SA	Sb	Rc		
FENDER SET, FR. FENDER COMP., FR. MUDGUARD, FR.	0.1	1	611A0-KB7-600ZA	FENDER SET, FR. *R-110*					1		B,DK,DM,E,F1,F2,G1,G2 IT,SA,SW,U
			611B0-KB7-600ZA	FENDER SET, FR. *NH-24*					1		B,DK,DM,E,F1,F2,G1,G2 IT,SA,SW,U
			611B0-KB7-600ZB	FENDER SET, FR. *NH-104M-U*					1		B,DK,DM,E,F1,F2,G1,G2 IT,SA,SW,U
			61100-KB7-000ZA	FENDER, FR. *R-110*					1		CM
		2	61100-KB7-640ZA	FENDER COMP., FR. *R-110*					1		ED,SD
			61100-KB7-640ZB	FENDER COMP., FR. *NH-24*					1		ED,SD
			61100-KB7-640ZC	FENDER COMP., FR. *NH-104M-U*					1		ED,SD
3	61104-KA4-700	COLLAR, FENDER MOUNTING					4		B,CM,DK,DM,E,F1,F2,G1 G2,IT,SA,SW,U		
4	61104-KB7-610	MUDGUARD, FR.					1		G1,G2,SW		
5	61105-KB7-640	PLATE, FR. MUDGUARD					1		ED,SD		
6	61106-KB7-610	PLATE, FR. FENDER					1		G1,G2,SW		
7	61106-KB7-640	BAND, FR. FENDER					2		ED,SD		

1982.01.10

E

K9

K 10

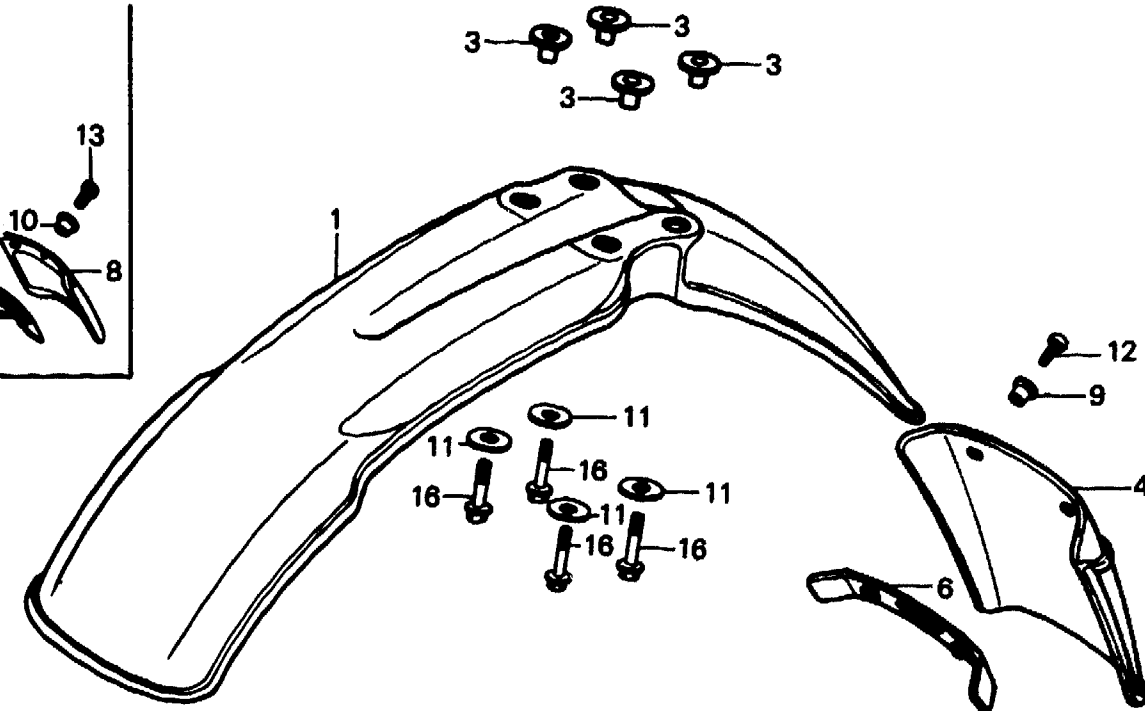
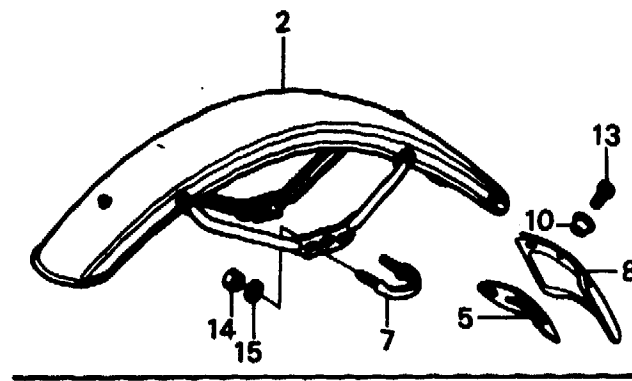
F-6

**Front fender
(XL250Rc)**

**Garde-boue avant
(XL250Rc)**

**Vorderer Kotflügel
(XL250Rc)**

**Parafango delantero
(XL250Rc)**



←FWD

BMC4-26

Service item	F.R.T.	Ref. No.	Part No.	Description	Reqd. No.					Serial No.	Area code
					S	Sz	SA	Se	Rc		
		8	61114-033-000	MUDGUARD, FR.					1		ED,SD
		9	90520-134-000	WASHER, HEADLIGHT CASE SETTING					2		G1,G2,SW
		10	90522-028-000	WASHER, CHAIN CASE SETTING					3		ED,SD
		11	90545-292-000	WASHER, 6.5X20					4		B,CM,DK,DM,E,F1,F2,G1 G2,IT,SA,SW,U
		12	93500-05012-0A	SCREW, PAN, 5X12					2		G1,G2,SW
		13	93500-06014	SCREW, PAN, 6X14					3		ED,SD
		14	94001-06000	NUT, HEX., 6MM					4		ED,SD
		15	94101-06000	WASHER, PLAIN, 6MM					4		ED,SD
		16	95700-06020-00	BOLT, FLANGE, 6X20					4		B,CM,DK,DM,E,F1,F2,G1 G2,IT,SA,SW,U

1982.01.10

E

K10