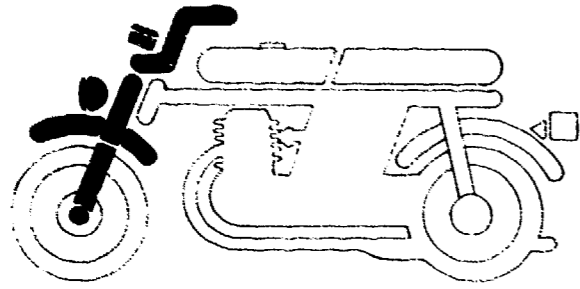
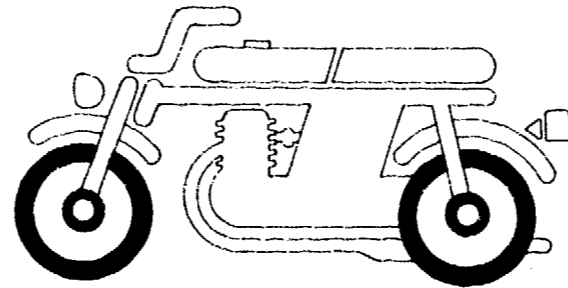


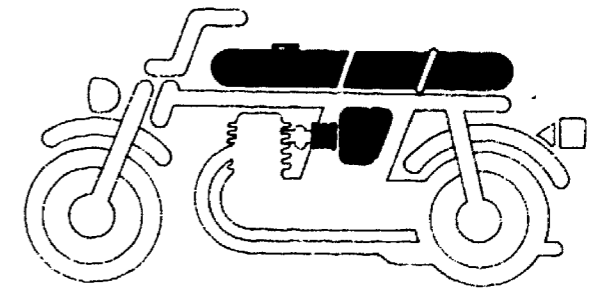
BLOCK INDEX - FRAME GROUP



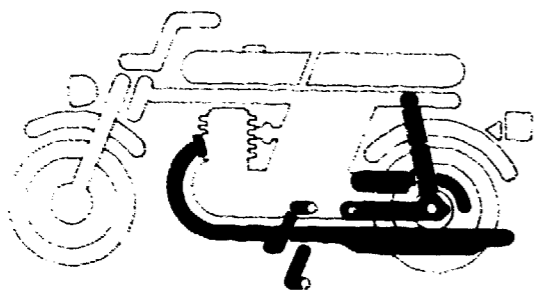
F- 1	Headlight.....	H 2
F- 2	Meter - Headlight stay.....	I 2
F- 3	Handle lever - Switch.....	I 14
F- 4	Handle pipe - Top bridge.....	J 8
F- 5	Steering stem - Front fender.....	J 12
F- 6	Front fender.....	K 9
F- 7	Steering stem - Horn.....	K 11



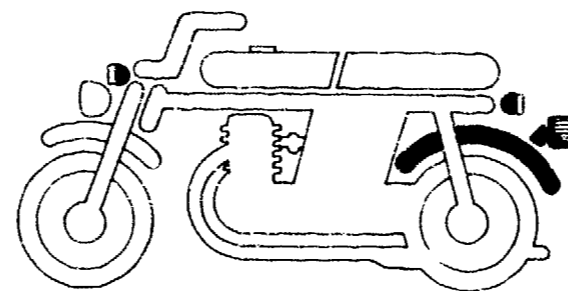
F- 8	Front fork.....	K 13
F- 9	Front wheel.....	L 12
F-10	Front brake panel.....	M 1
F-11	Rear wheel.....	M 5
F-12	Rear brake panel.....	M 13



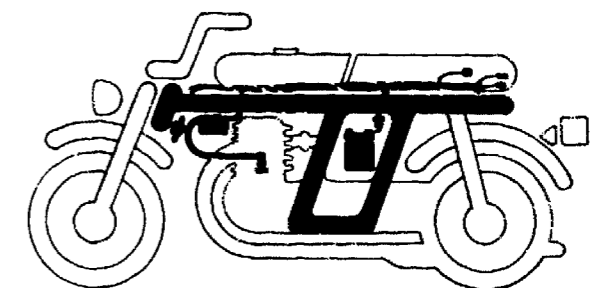
F-13	Fuel tank.....	N 1
F-14	Seat.....	N 7
F-15	Air cleaner.....	N 10
F-16	Side cover.....	2-C 16



F-17	Exhaust muffer.....	2-D 2
F-18	Pedal - Kick starter arm - Step.....	2-D 7
F-19	Rear fork - Chain case.....	2-E 9
F-20	Rear cushion.....	2-F 5



F-21	Rear fender.....	2-F 11
F-22	Winker.....	2-G 6
F-23	Taillight.....	2-H 11



F-24	Wire harness - Battery.....	2-I 6
F-25	Battery.....	2-I 14
F-26	Frame body.....	2-I 15
F-27	Tool.....	2-J 8
F-28	Stripe - Emblem.....	2-J 11

H 2

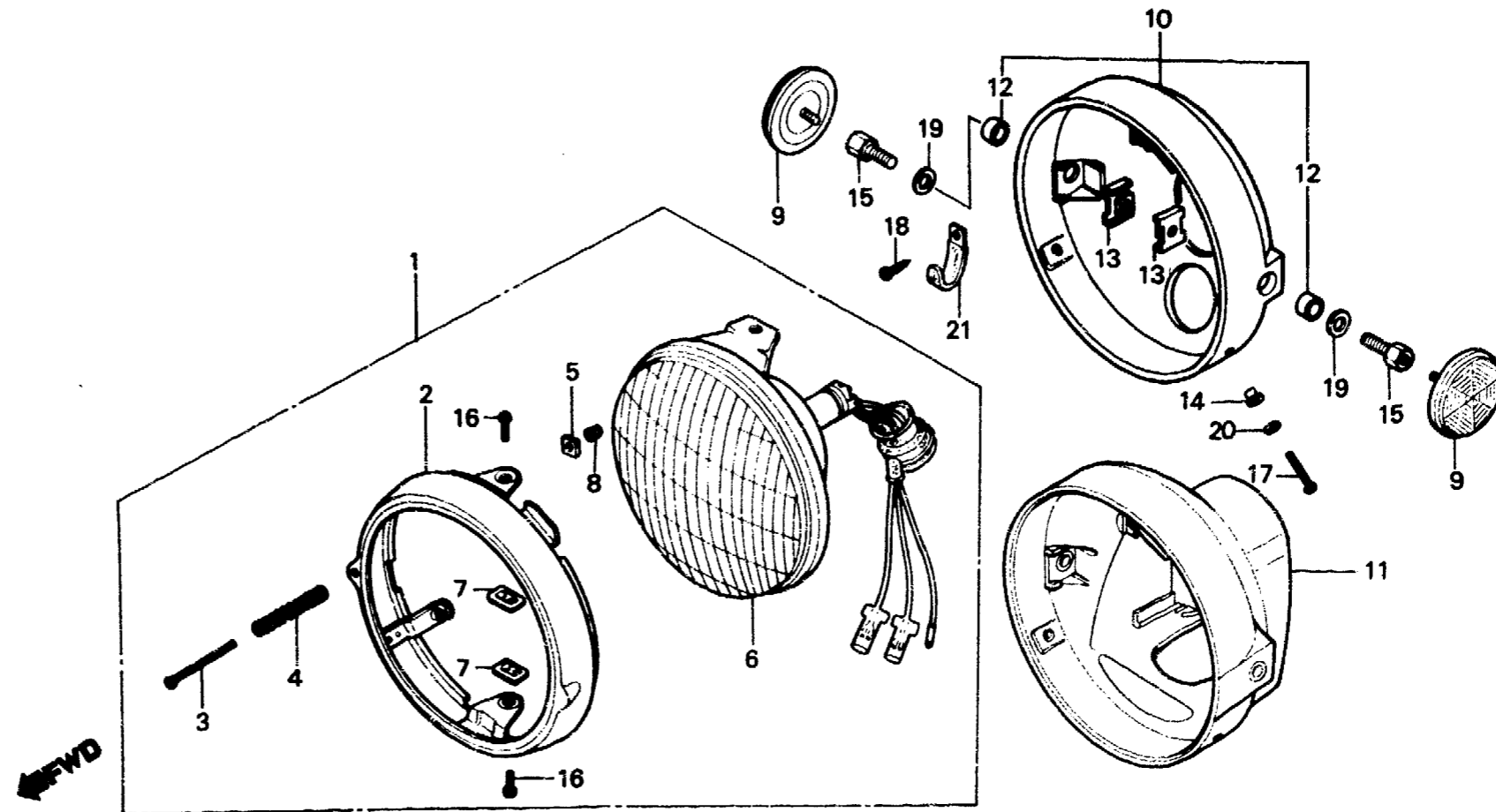
F-1

**Headlight
(CM)**

**Phare
(CM)**

**Scheinwerfer
(CM)**

**Faro delantero
(CM)**



B428-17A

Service item	F.R.T.	Ref. No.	Part No.	Description	Reqd. No.					Serial No.	Area code
					S	Sz	SA	Sb	Rc		
HEADLIGHT ASSY.	0.1	1	33100-428-671	HEADLIGHT ASSY. (6V 35/36.5W)	1	1	1	1			CM
HEADLIGHT UNIT	0.2		33100-MC4-670	HEADLIGHT ASSY.							CM
INC. RELATIVE PART		2	33101-329-671	RIM, HEADLIGHT	1	1	1	1	1		CM
CASE, HEADLIGHT	0.3	3	33103-329-671	SCREW, HEADLIGHT BEAM	1	1	1	1	1		CM
		4	33107-283-023	SPRING, HEADLIGHT BEAM ADJUSTING	1	1	1	1	1		CM
		5	33117-001-023	NUT, HEADLIGHT BEAM ADJUSTING	1	1	1	1	1		CM
		6	33120-428-671	HEADLIGHT UNIT	1	1	1	1			CM
			33120-MC4-670	HEADLIGHT UNIT					1		CM
		7	33128-200-033	NUT, UNIT HOLDER	2	2	2	2			CM
			33128-292-670	NUT, UNIT HOLDER					2		CM
		8	33136-426-830	COVER, SCREW					1		CM
		9	33741-428-671	REFLECTOR, FR, REFLEX	2	2	2	2	2		CM
		10	61301-MC4-670ZA	CASE, HEADLIGHT *NH-1*					1		CM
		11	61301-399-000ZA	CASE, HEADLIGHT *NH-1*	1	1	1	1			CM
		12	61302-229-300	COLLAR, HEADLIGHT CASE					2		CM

H 3

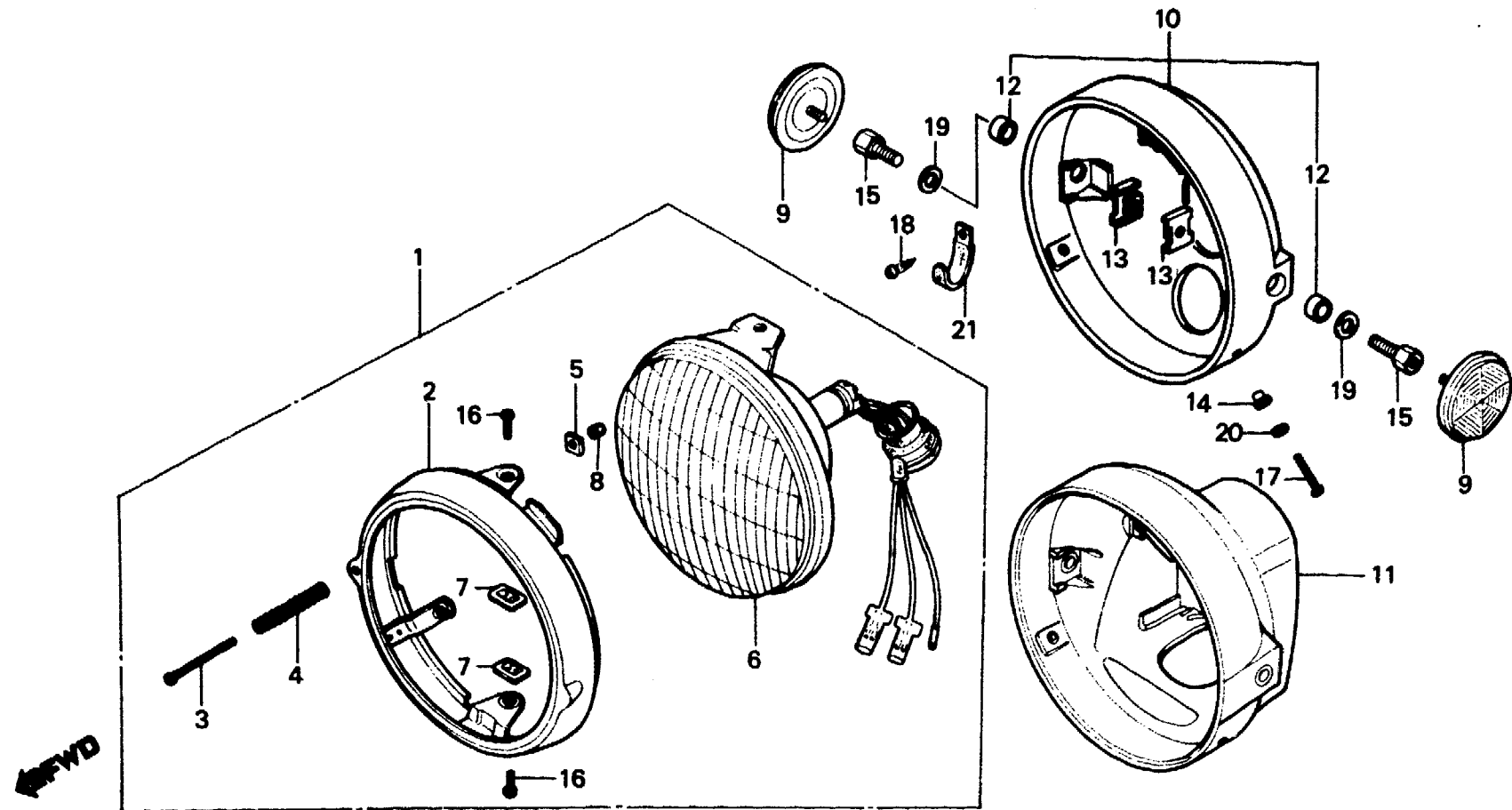
F-1

**Headlight
(CM)**

**Phare
(CM)**

**Scheinwerfer
(CM)**

**Faro delantero
(CM)**



B428-17A

Service item	F.R.T.	Ref. No.	Part No.	Description	Reqd. No.					Serial No.	Area code
					S	Sz	SA	Sb	Rc		
		13	61303-105-000	NUT, HEADLIGHT CASE	2	2	2	2	2		CM
		14	61304-292-000	COLLAR, HEADLIGHT SETTING	2	2	2	2	2		CM
		15	90123-428-000	BOLT, HEADLIGHT STAY	2	2	2	2	2		CM
		16	93500-05008-0H	SCREW, PAN, 5X8	2	2	2	2	2		CM
		17	93500-05016-0B	SCREW, PAN, 5X16	2	2	2	2	2		CM
		18	93901-14110	SCREW, TAPPING, 4X8	1	1	1	1	1		CM
		19	94102-08700	WASHER, PLAIN, 8MM	2	2	2	2	2		CM
		20	94111-05000	WASHER, SPRING, 5MM	2	2	2	2	2		CM
		21	94591-45000	CLIP, WIRE, 4X50	1	1	1	1	1		CM



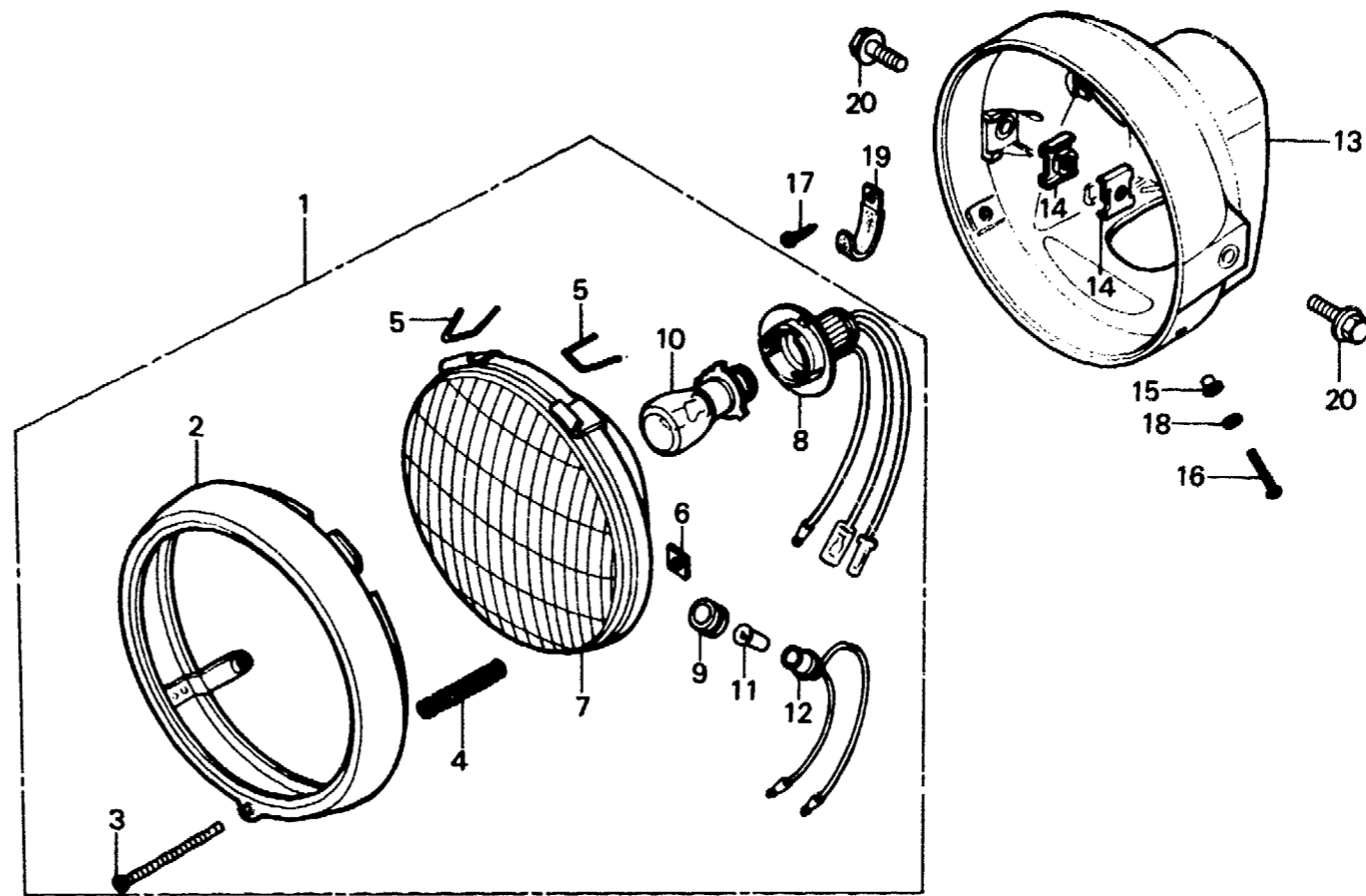
F-1-1

Headlight
(XL250S,SA-DK,DM,SA,U)

Phare
(XL250S,SA-DK,DM,SA,U)

Scheinwerfer
(XL250S,SA-DK,DM,SA,U)

Faro delantero
(XL250S,SA-DK,DM,SA,U)



← FWD

B428-41

Service item	F.R.T.	Ref. No.	Part No.	Description	Reqd. No.				Serial No.	Area code
					S	Sz	SA	Sa		
HEADLIGHT ASSY.	0.1	1	33100-329-003	HEADLIGHT ASSY.	1		1			DK,DM,SA,U
SOCKET, HEADLIGHT		2	33101-336-003	RIM, HEADLIGHT	1		1			DK,DM,SA,U
BULB, HEADLIGHT		3	33103-329-003	SCREW, HEADLIGHT BEAM	1		1			DK,DM,SA,U
SOCKET, POSITION LIGHT				ADJUSTING						
HEADLIGHT UNIT	0.2	4	33107-200-023	SPRING, HEADLIGHT BEAM	1		1			DK,DM,SA,U
INC. RELATIVE PART				ADJUSTING						
CASE, HEADLIGHT	0.3	5	33108-307-681	SPRING, UNIT HOLDER	2		2			DK,DM,SA,U
		6	33117-001-023	NUT, HEADLIGHT BEAM ADJUSTING	1		1			DK,DM,SA,U
		7	33121-329-003	HEADLIGHT UNIT	1		1			DK,DM,SA,U
		8	33130-243-670	SOCKET, HEADLIGHT	1		1			DK,DM,SA,U
		9	33905-303-003	RUBBER, JOINT (STANLEY)	1		1			DK,DM,SA,U
		10	34901-329-003	BULB, HEADLIGHT (6V35/36W-3W)	1		1			DK,DM,SA,U
		11	34903-303-003	BULB, POSITION LIGHT (6V3W)	1		1			DK,DM,SA,U
				(STANLEY)						
		12	34904-303-003	SOCKET, POSITION LIGHT	1		1			DK,DM,SA,U
				(STANLEY)						
		13	61301-399-000ZA	CASE, HEADLIGHT *NH-1*	1		1			DK,DM,SA,U

1982.01.10

E

H4

H 5

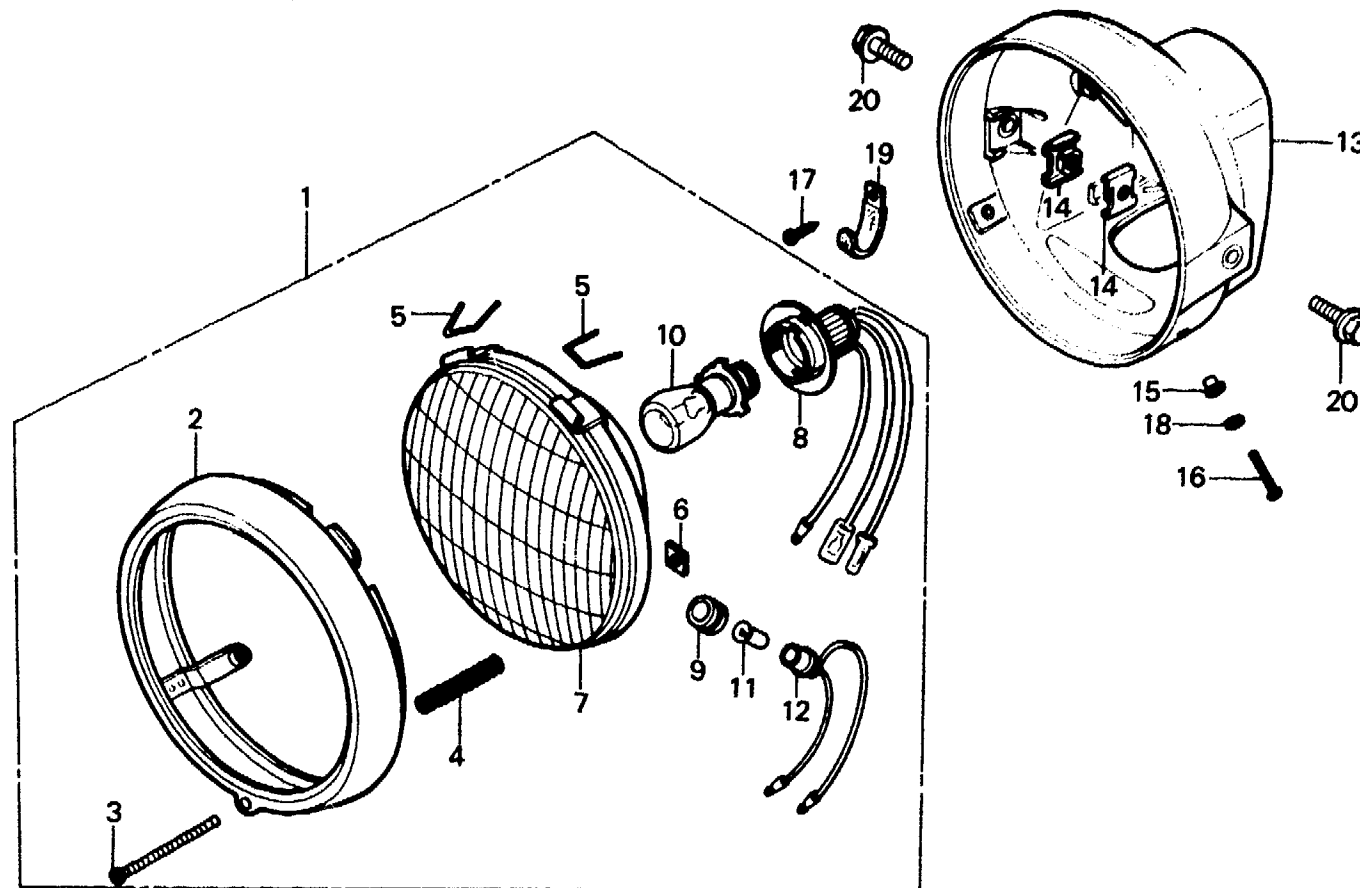
F-1-1

Headlight
(XL250S, SA-DK, DM, SA, U)

Phare
(XL250S, SA-DK, DM, SA, U)

Scheinwerfer
(XL250S, SA-DK, DM, SA, U)

Faro delantero
(XL250S, SA-DK, DM, SA, U)



←FWD

B428-41

Service item	F.R.T.	Ref. No.	Part No.	Description	Reqd. No.					Serial No.	Area code
					S	Sz	SA	Sb	Rc		
		14	61303-105-000	NUT, HEADLIGHT CASE	2		2				DK, DM, SA, U
		15	61304-292-000	COLLAR, HEADLIGHT SETTING	2		2				DK, DM, SA, U
		16	93500-05010-0A	SCREW, PAN, 5X10	2		2				DK, DM, SA, U
		17	93901-14110	SCREW, TAPPING, 4X8	1		1				DK, DM, SA, U
		18	94111-05000	WASHER, SPRING, 5MM	2		2				DK, DM, SA, U
		19	94591-45000	CLIP, WIRE, 4X50	1		1				DK, DM, SA, U
		20	95700-08016-00	BOLT, FLANGE, 8X16	2		2				DK, DM, SA, U

1982.01.10

E

H5



F-1-2

Headlight

(XL250S, SA-B, E, ED, G, G1, G2, SD, SW)

Phare

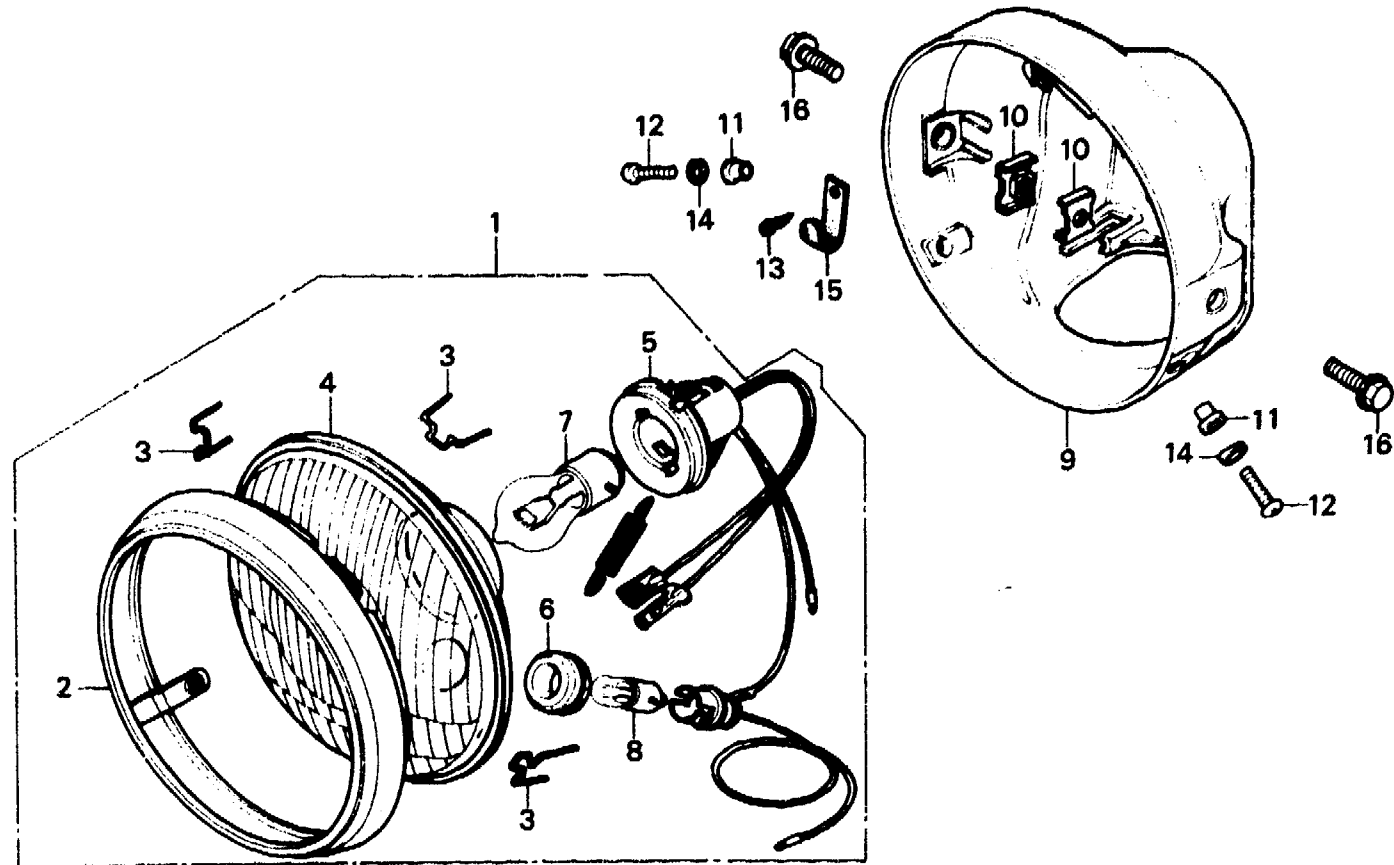
(XL250S, SA-B, E, ED, G, G1, G2, SD, SW)

Scheinwerfer

(XL250S, SA-B, E, ED, G, G1, G2, SD, SW)

Faro delantero

(XL250S, SA-B, E, ED, G, G1, G2, SD, SW)



B428-43

Service item	F.R.T.	Ref. No.	Part No.	Description	Reqd. No. XL250					Serial No.	Area code
					S	Sz	SA	Sb	Rc		
HEADLIGHT ASSY.	0.1	1	33100-399-601	HEADLIGHT ASSY. (6V35/35W) (STANLEY)	1		1				B, E, ED, G, G1, G2, SD, SW
SOCKET COMP., HEADLIGHT											
BULB, HEADLIGHT		2	33101-399-601	RIM, HEADLIGHT (STANLEY)	1		1				B, E, ED, G, G1, G2, SD, SW
BULB, POSITION		3	33108-028-013	SPRING, UNIT HOLDER (STANLEY)	3		3				B, E, ED, G, G1, G2, SD, SW
HEADLIGHT UNIT	0.2	4	33120-304-611	HEADLIGHT UNIT (STANLEY)	1		1				B, E, ED, G, G1, G2, SD, SW
INC. RELATIVE PART		5	33130-399-601	SOCKET COMP., HEADLIGHT (STANLEY)	1		1				B, E, ED, G, G1, G2, SD, SW
CASE, HEADLIGHT	0.3										
		6	33905-303-003	RUBBER, JOINT (STANLEY)	1		1				B, E, ED, G, G1, G2, SD, SW
		7	34901-383-611	BULB, HEADLIGHT (6V35/35W) (LOCAL PROCUREMENT PART)	1		1				B, E, ED, G, G1, G2, SD, SW
		8	34903-383-611	BULB, POSITION (6V4W) (LOCAL PROCUREMENT PART)	1		1				B, E, ED, G, G1, G2, SD, SW
		9	61301-399-000ZA	CASE, HEADLIGHT *NH-1*	1		1				B, E, ED, G, G1, G2, SD, SW
		10	61303-105-000	NUT, HEADLIGHT CASE	2		2				B, E, ED, G, G1, G2, SD, SW
		11	61304-292-000	COLLAR, HEADLIGHT SETTING	2		2				B, E, ED, G, G1, G2, SD, SW
		12	93500-05016-0B	SCREW, PAN, 5X16	2		2				B, E, ED, G, G1, G2, SD, SW
		13	93901-14110	SCREW, TAPPING, 4X8	1		1				B, E, ED, G, G1, G2, SD, SW

H 7

F-1-2

Headlight

(XL250S, SA-B, E, ED, G, G1, G2, SD, SW)

Phare

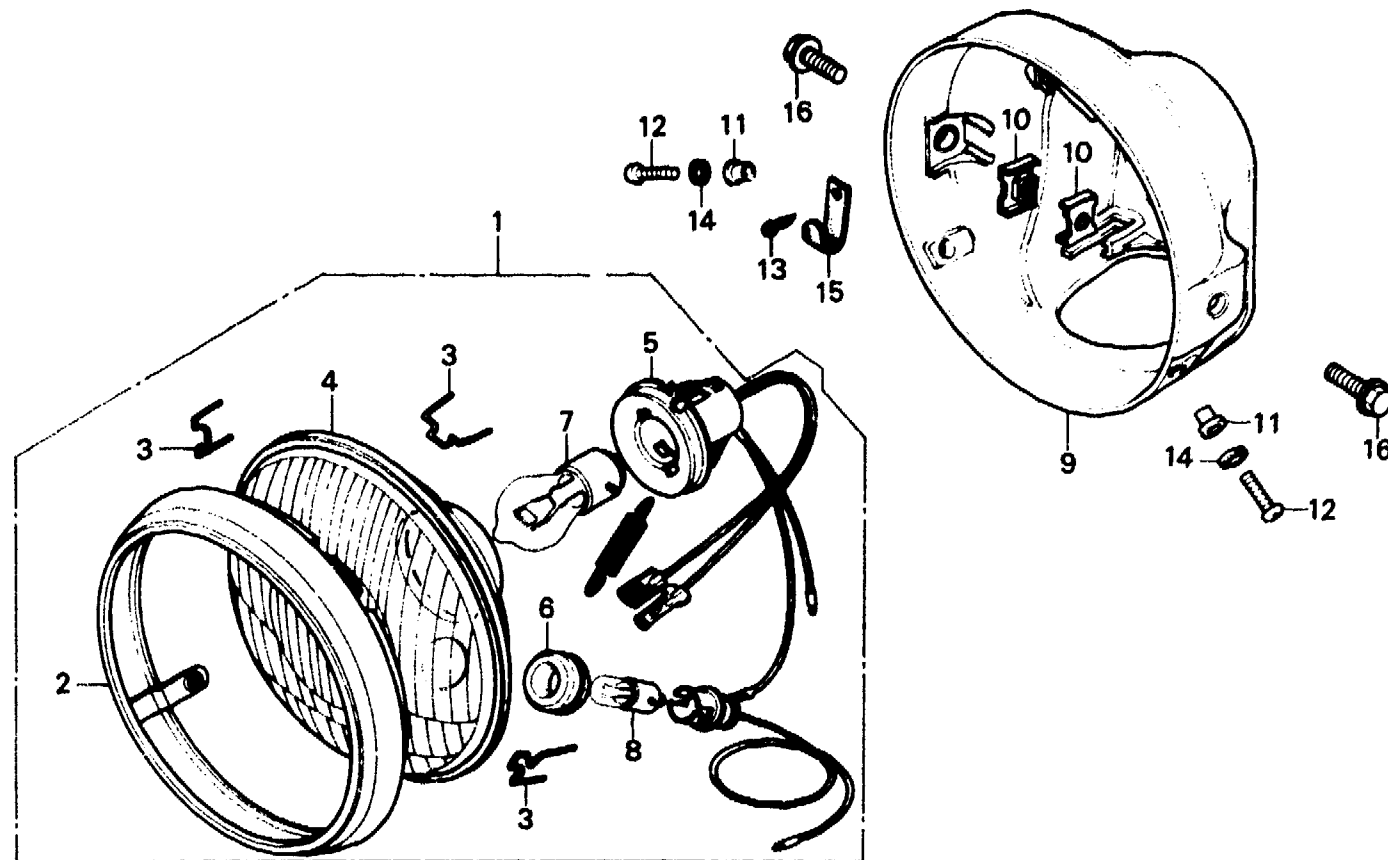
(XL250S, SA-B, E, ED, G, G1, G2, SD, SW)

Scheinwerfer

(XL250S, SA-B, E, ED, G, G1, G2, SD, SW)

Faro delantero

(XL250S, SA-B, E, ED, G, G1, G2, SD, SW)



←FWD

B428-43

Service item	F.R.T.	Ref. No.	Part No.	Description	Reqd. No.					Serial No.	Area code
					S	Sz	SA	Sb	Rc		
		14	94111-05000	WASHER, SPRING, 5MM	2		2				B, E, ED, G, G1, G2, SD, SW
		15	94591-45000	CLIP, WIRE, 4X50	1		1				B, E, ED, G, G1, G2, SD, SW
		16	95700-08016-00	BOLT, FLANGE, 8X16	2		2				B, E, ED, G, G1, G2, SD, SW



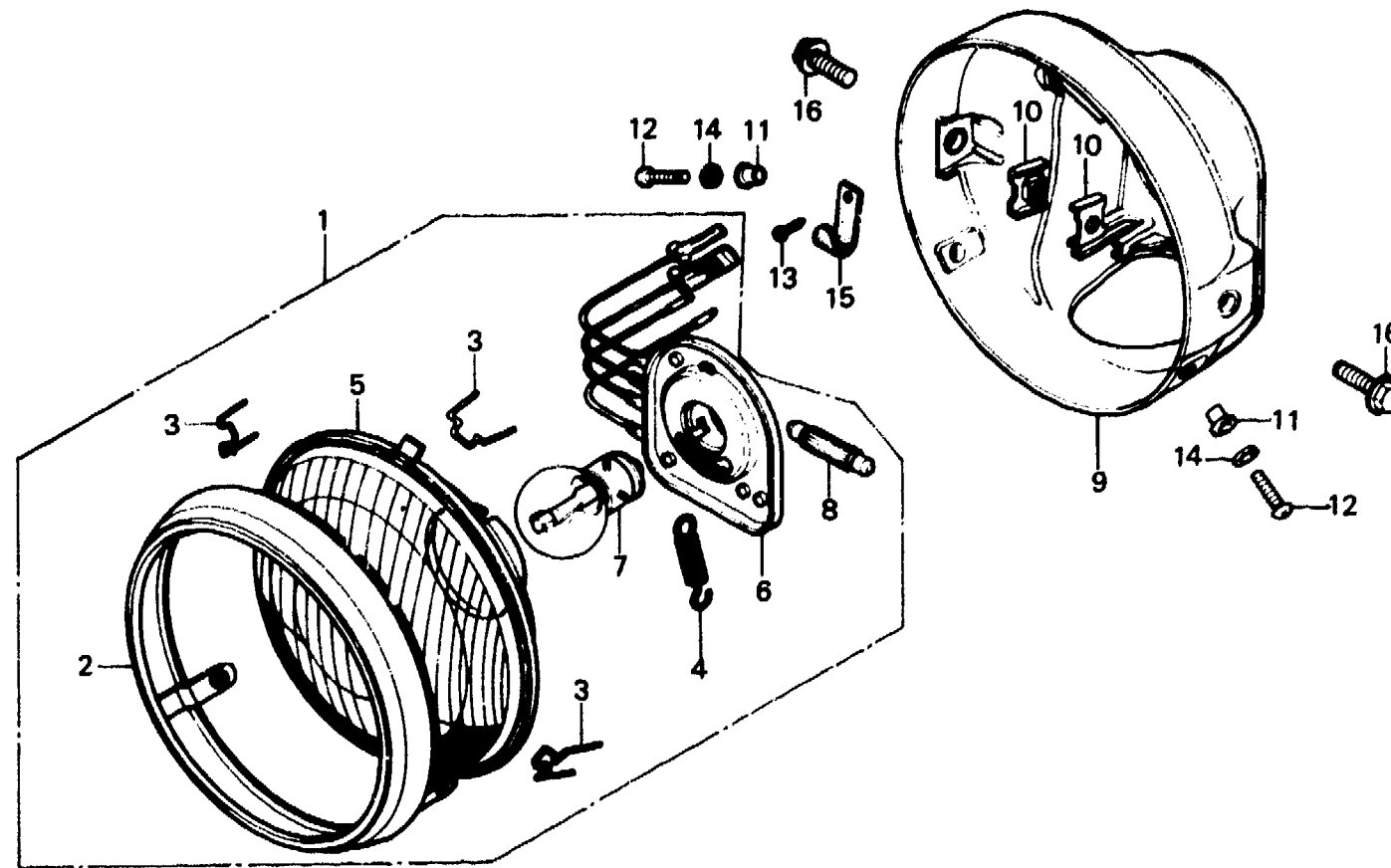
F-1-3

Headlight
(XL250S,SA-F,F1,F2)

Phare
(XL250S,SA-F,F1,F2)

Scheinwerfer
(XL250S,SA-F,F1,F2)

Faro delantero
(XL250S,SA-F,F1,F2)



B428-42

Service item	F.R.T.	Ref. No.	Part No.	Description	Reqd. No.				Serial No.	Area code
					S	Sz	SA	Sb		
HEADLIGHT ASSY.	0.1	1	33100-399-621	HEADLIGHT ASSY. (6V36/36W) (STANLEY)	1					F,F1,F2
.SOCKET COMP., HEADLIGHT		6	33130-399-621	SOCKET COMP., HEADLIGHT (STANLEY)	1					F,F1,F2
.BULB, HEADLIGHT		7	34901-382-621	BULB, HEADLIGHT (6V36/36W) (LOCAL PROCUREMENT PART)	1					F,F1,F2
.BULB, POSITION		8	34903-382-621	BULB, POSITION (6V4W) (LOCAL PROCUREMENT PART)	1					F,F1,F2
HEADLIGHT UNIT	0.2	5	33120-246-620	HEADLIGHT UNIT (STANLEY)	1					F,F1,F2
INC. RELATIVE PART		9	61301-399-000ZA	CASE, HEADLIGHT *NH-1*	1					F,F1,F2
CASE, HEADLIGHT	0.3	10	61303-105-000	NUT, HEADLIGHT CASE	2					F,F1,F2
		11	61304-292-000	COLLAR, HEADLIGHT SETTING	2					F,F1,F2
		12	93500-05016-0B	SCREW, PAN, 5X16	2					F,F1,F2
		13	93901-14110	SCREW, TAPPING, 4X8	1					F,F1,F2

1982.01.10

E

H8

H 9

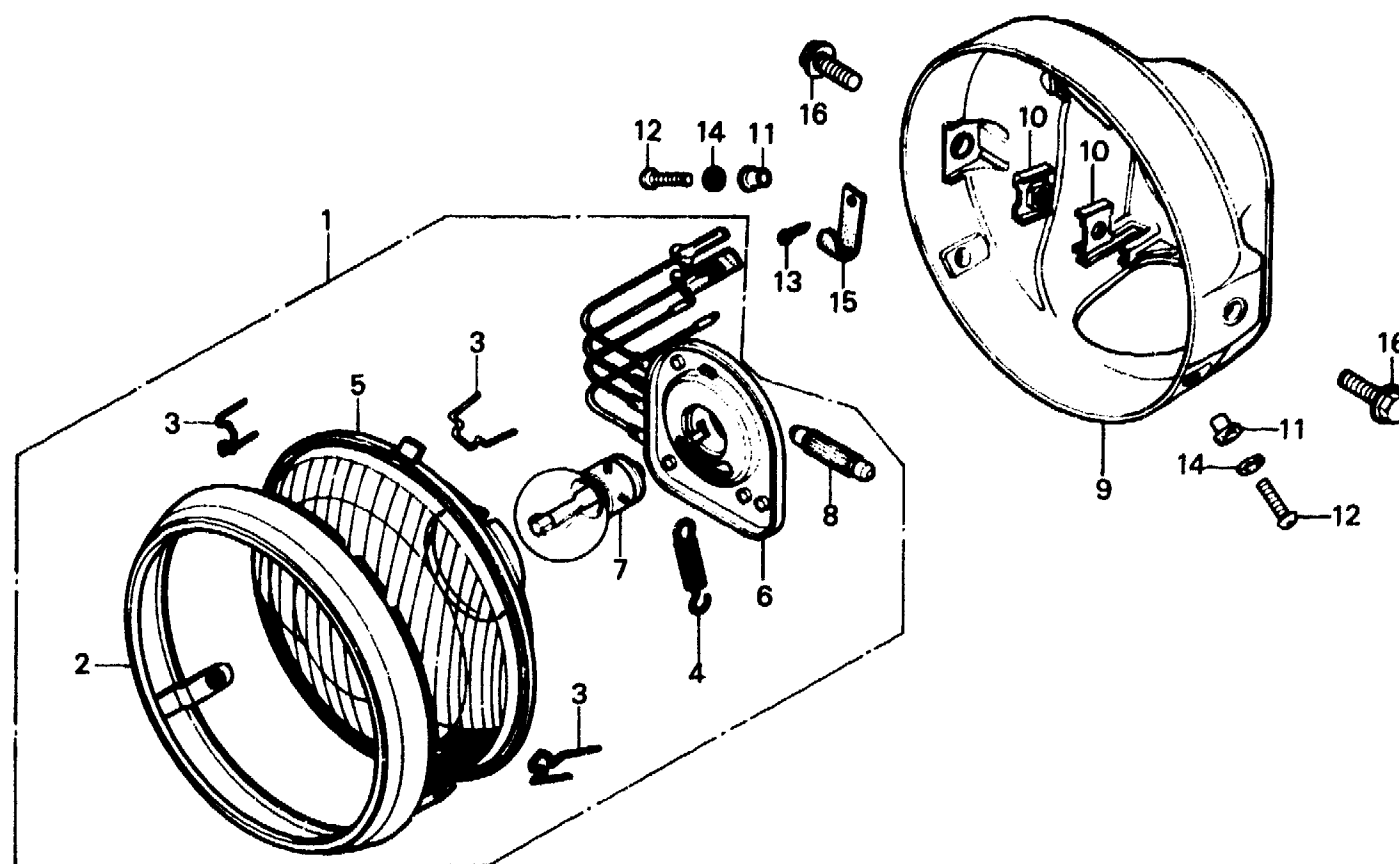
F-1-3

Headlight
(XL250S,SA-F,F1,F2)

Phare
(XL250S,SA-F,F1,F2)

Scheinwerfer
(XL250S,SA-F,F1,F2)

Faro delantero
(XL250S,SA-F,F1,F2)



B428-42

Service item	F.R.T.	Ref. No.	Part No.	Description	Reqd. No.				Serial No.	Area code
					S	Sz	SA	Ss		
		14	94111-05000	WASHER, SPRING, 5MM	2		2			F,F1,F2
		15	94591-45000	CLIP, WIRE, 4X50	1		1			F,F1,F2
		16	95700-08016-00	BOLT, FLANGE, 8X16	2		2			F,F1,F2

1982.01.10

E

H9

H 10

F-1-4

Headlight

(XL250S_B-B,DK,DM,E,ED,F1,
F2,G1,G2,SA,SD,SW,U)

Phare

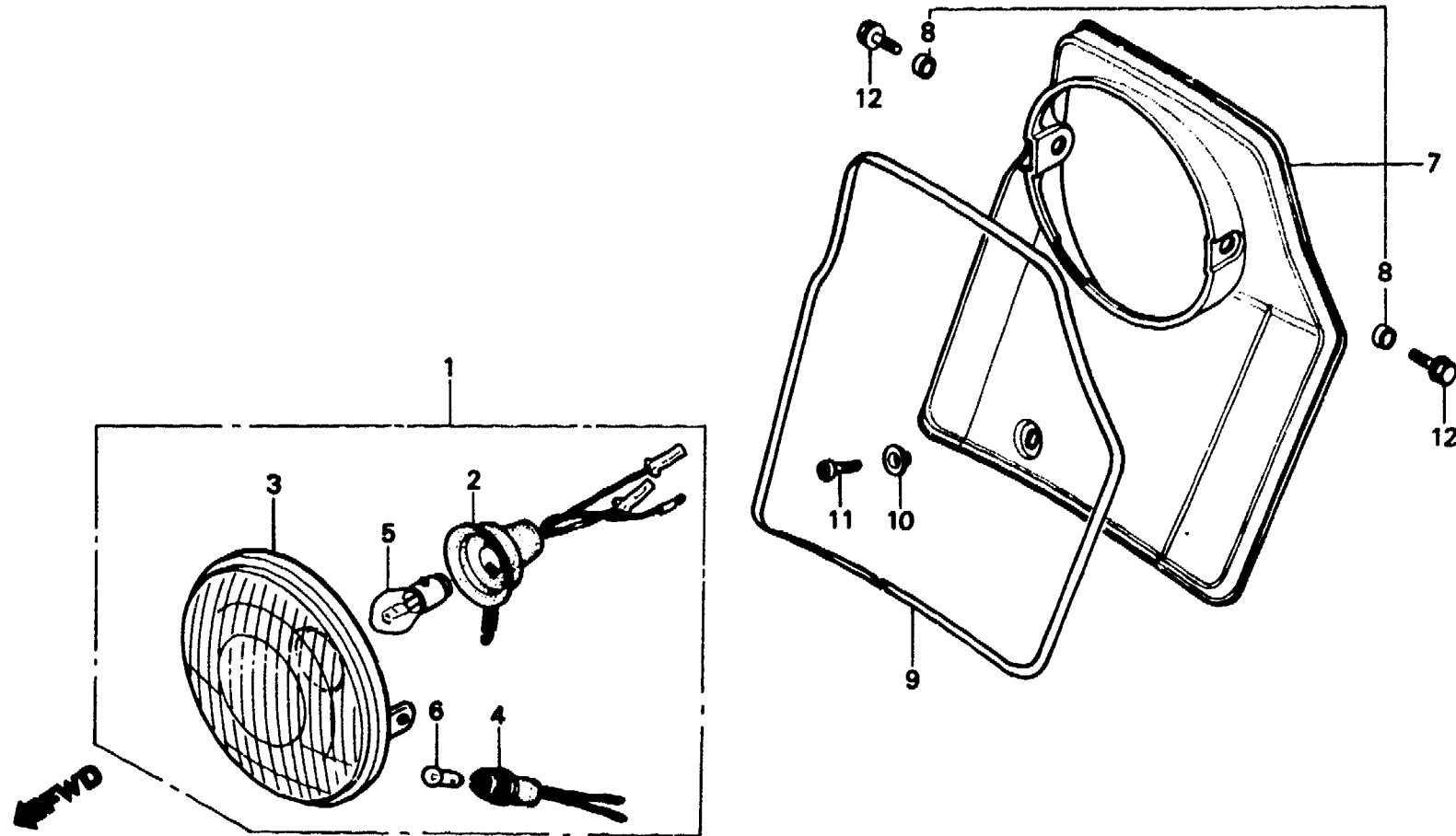
(XL250S_B-B,DK,DM,E,ED,F1,
F2,G1,G2,SA,SD,SW,U)

Scheinwerfer

(XL250S_B-B,DK,DM,E,ED,F1,
F2,G1,G2,SA,SD,SW,U)

Faro delantero

(XL250S_B-B,DK,DM,E,ED,F1,
F2,G1,G2,SA,SD,SW,U)



B435-63

Service item	F.R.T.	Ref. No.	Part No.	Description	Reqd. No.					Serial No.	Area code		
					S	Sz	SA	Sb	Rc				
HEADLIGHT ASSY. SOCKET ASSY., HEADLIGHT HEADLIGHT UNIT SOCKET ASSY., POSITION LIGHT BULB, HEADLIGHT BULB, POSITION PLATE, FR. NUMBER	0.1	1	33100-KB1-710	HEADLIGHT ASSY. (6V36/36W-4W) (STANLEY)					1		F1,F2		
			33100-427-910	HEADLIGHT ASSY. (6V35/35W-4W) (STANLEY)					1		B,E,ED,G1,G2,SD,SW		
			33100-427-931	HEADLIGHT ASSY. (6V35/36W-3W) (STANLEY)					1		DK,DM,SA,U		
			2	33110-166-013	SOCKET ASSY., HEADLIGHT					1		DK,DM,SA,U	
				33110-183-612	SOCKET ASSY., HEADLIGHT					1		B,E,ED,G1,G2,SD,SW	
				33130-183-622	SOCKET ASSY., HEADLIGHT					1		F1,F2	
				3	33120-KB1-710	HEADLIGHT UNIT				1		F1,F2	
					33120-166-003	HEADLIGHT UNIT (STANLEY)				1		DK,DM,SA,U	
					33120-183-611	HEADLIGHT UNIT				1		B,E,ED,G1,G2,SD,SW	
					4	33150-166-003	SOCKET ASSY., POSITION LIGHT (STANLEY)				1		B,DK,DM,E,ED,G1,G2,SA SD,SW,U
						33150-183-621	SOCKET ASSY., POSITION LIGHT				1		F1,F2
					5	34901-329-003	BULB, HEADLIGHT (6V35/36W-3W)				1		DK,DM,SA,U
				34901-382-621	BULB, HEADLIGHT (6V36/36W) (LOCAL PROCUREMENT PART)				1		F1,F2		
				34901-383-611	BULB, HEADLIGHT (6V35/35W) (LOCAL PROCUREMENT PART)				1		B,E,ED,G1,G2,SD,SW		

1982.01.10

E

H10

H 11

F-1-4

Headlight

(XL250S_B-B,DK,DM,E,ED,F1,
F2,G1,G2,SA,SD,SW,U)

Phare

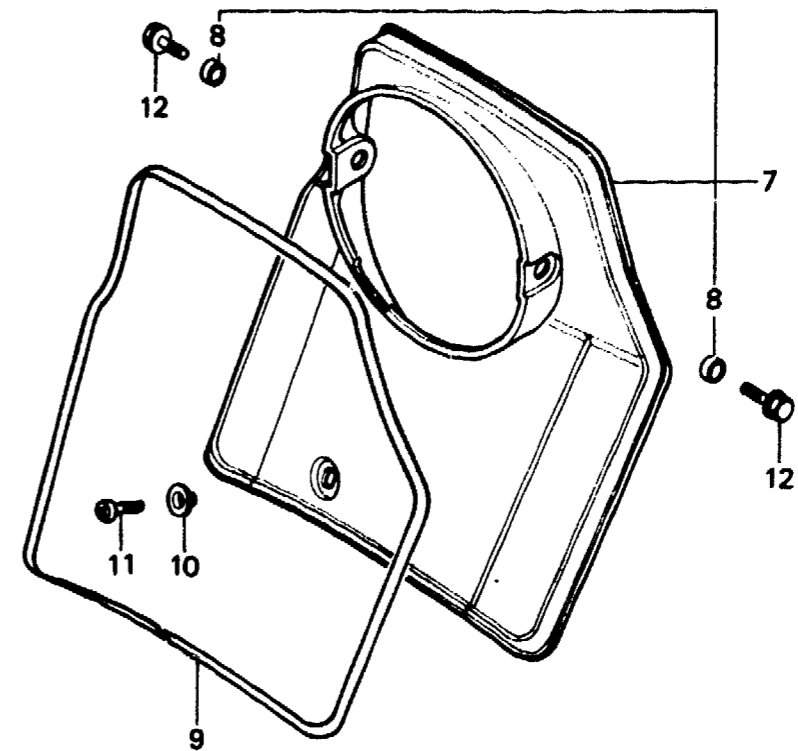
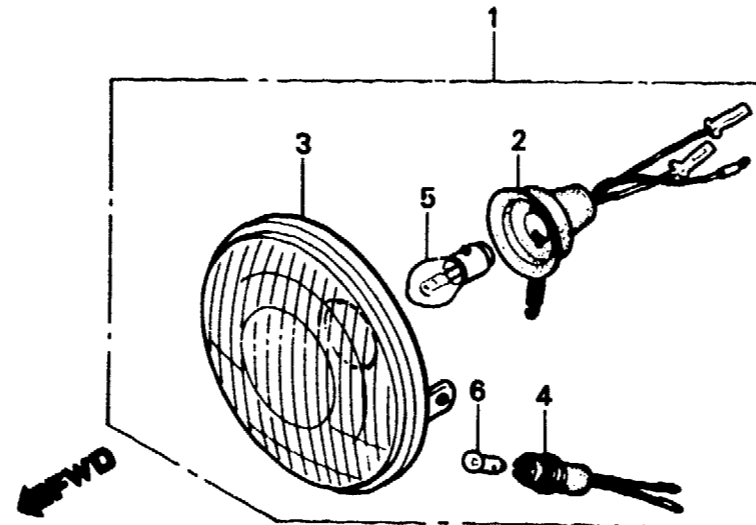
(XL250S_B-B,DK,DM,E,ED,F1,
F2,G1,G2,SA,SD,SW,U)

Scheinwerfer

(XL250S_B-B,DK,DM,E,ED,F1,
F2,G1,G2,SA,SD,SW,U)

Faro delantero

(XL250S_B-B,DK,DM,E,ED,F1,
F2,G1,G2,SA,SD,SW,U)



B435-63

Service item	F.R.T.	Ref. No.	Part No.	Description	Reqd. No.					Serial No.	Area code
					S	Sz	SA	S _B	Rc		
		6	34902-303-003	BULB, POSITION LIGHT (6V3W)					1		DK,DM,SA,U
			34903-383-611	BULB, POSITION (6V4W) (LOCAL PROCUREMENT PART)					1		B,E,ED,F1,F2,G1,G2,SD SW
		7	61301-437-940ZA	PLATE, FR. NUMBER *NH-105*					1		B,DK,DM,E,ED,F1,F2,G1 G2,SA,SD,SW,U
		8	61302-229-300	COLLAR, HEADLIGHT CASE					2		B,DK,DM,E,ED,F1,F2,G1 G2,SA,SD,SW,U
		9	87126-428-830	STRIPE, FR. NUMBER PLATE					1		B,DK,DM,E,ED,F1,F2,G1 G2,SA,SD,SW,U
		10	90522-028-000	WASHER, CHAIN CASE SETTING					1		B,DK,DM,E,ED,F1,F2,G1 G2,SA,SD,SW,U
		11	93500-06012-00	SCREW, PAN, 6X12					1		B,DK,DM,E,ED,F1,F2,G1 G2,SA,SD,SW,U
		12	95700-08016-00	BOLT, FLANGE, 8X16					2		B,DK,DM,E,ED,F1,F2,G1 G2,SA,SD,SW,U

1982.01.10

E

H11

H 12

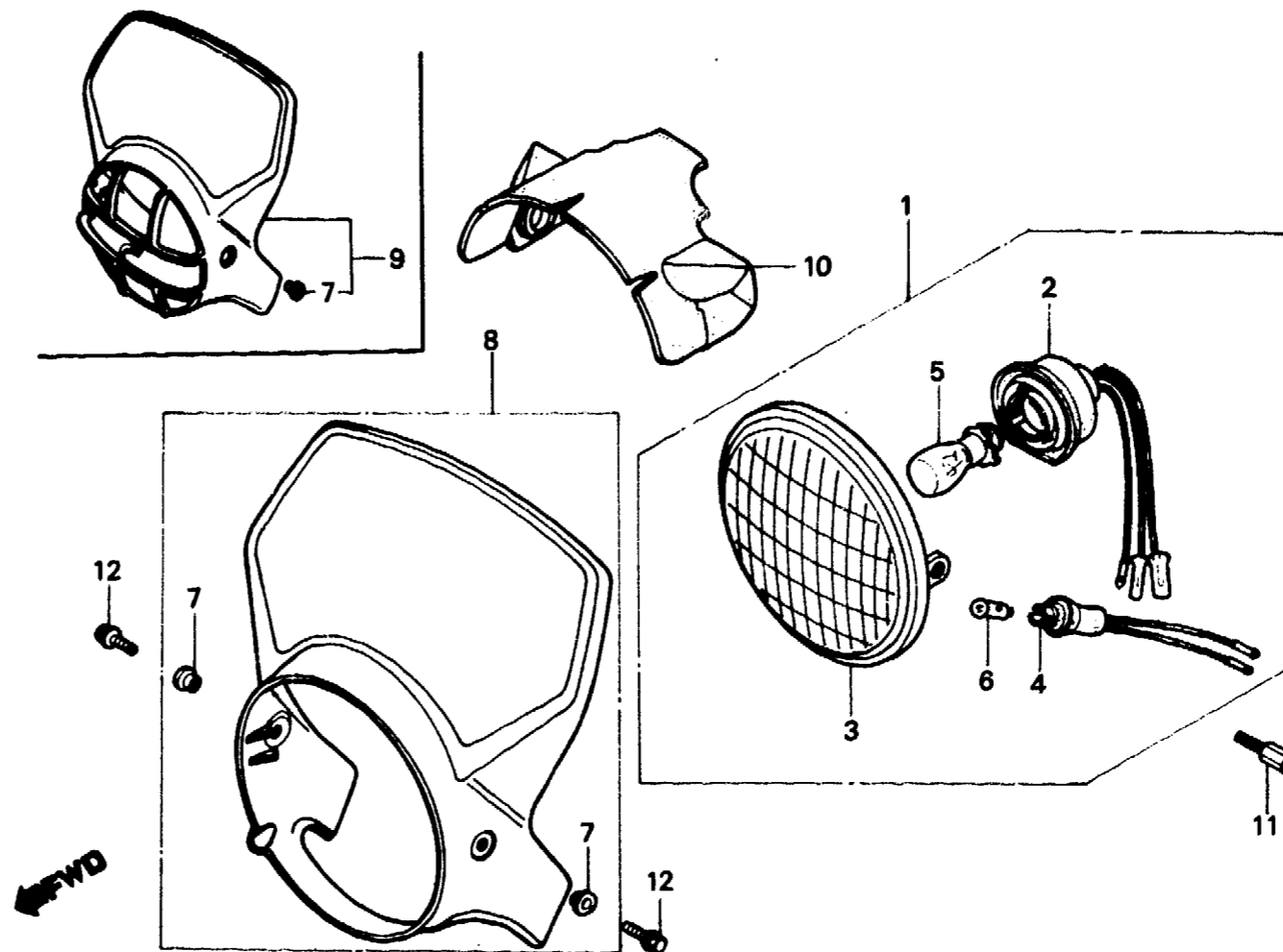
F-1-5

**Headlight
(XL250Rc-DK,DM,SA,U)**

**Phare
(XL250Rc-DK,DM,SA,U)**

**Scheinwerfer
(XL250Rc-DK,DM,SA,U)**

**Faro delantero
(XL250Rc-DK,DM,SA,U)**



BMC4-22

Service item	F.R.T.	Ref. No.	Part No.	Description	Reqd. No.				Serial No.	Area code
					S	Sz	SA	Sb		
HEADLIGHT ASSY. HEADLIGHT UNIT INC. RELATIVE PART VISOR SET, FR. RUBBER, FR. VISOR	0.1	1	33100-KB7-680	HEADLIGHT ASSY.					1	DK,DM,SA,U
		2	33110-KB7-003	SOCKET ASSY., HEADLIGHT					1	DK,DM,SA,U
		3	33120-KB7-680	HEADLIGHT UNIT					1	DK,DM,SA,U
		4	33150-166-003	SOCKET ASSY., POSITION LIGHT (STANLEY)					1	DK,DM,SA,U
		5	34901-KB7-003	BULB, HEADLIGHT (12V 35/35W)					1	DK,DM,SA,U
		6	34903-071-003	BULB, MARKER LIGHT (12V 3.4W) (STANLEY)					1	DK,DM,SA,U
		7	61101-441-000	COLLAR, FR. FENDER SETTING					2	DK,DM,SA,U
		8	613A0-KB7-600ZA	VISOR SET, FR. *R-110*					1	DK,DM,SA,U
		613A0-KB7-600ZB	VISOR SET, FR. *NH-24*						1	DK,DM,SA,U
		613A0-KB7-600ZC	VISOR SET, FR. *NH-104M-U*						1	DK,DM,SA,U
9	613A0-KB7-680ZA	VISOR SET, FR. *R-110*					(1)	DK,DM,SA,U		
613A0-KB7-680ZB	VISOR SET, FR. *NH-24*						(1)	DK,DM,SA,U		

H 13

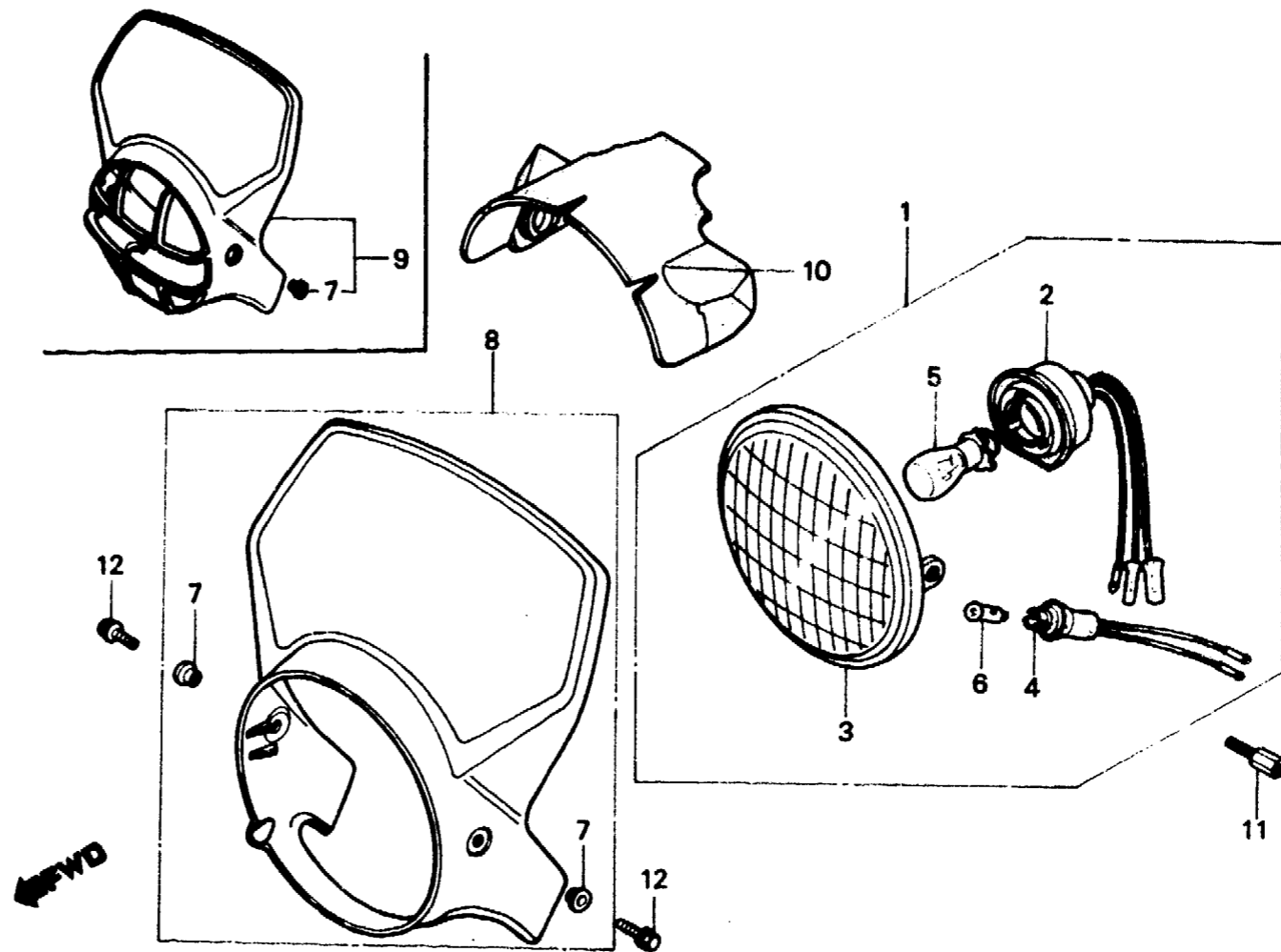
F-1-5

Headlight
(XL250Rc-DK,DM,SA,U)

Phare
(XL250Rc-DK,DM,SA,U)

Scheinwerfer
(XL250Rc-DK,DM,SA,U)

Faro delantero
(XL250Rc-DK,DM,SA,U)



BMC4-22

Service item	F.R.T.	Ref. No.	Part No.	Description	Reqd. No.				Serial No.	Area code
					S	Sz	SA	Sa		
			613A0-KB7-680ZC	VISOR SET, FR. *NH-104M-U*					(1)	DK,DM,SA,U
		10	61306-KB7-000	RUBBER, FR. VISOR					1	DK,DM,SA,U
		11	90123-KB7-000	BOLT, HEADLIGHT STAY					2	DK,DM,SA,U
		12	95700-06012-00	BOLT, FLANGE, 6X12					2	DK,DM,SA,U

1982.01.10

E

H13

H 14

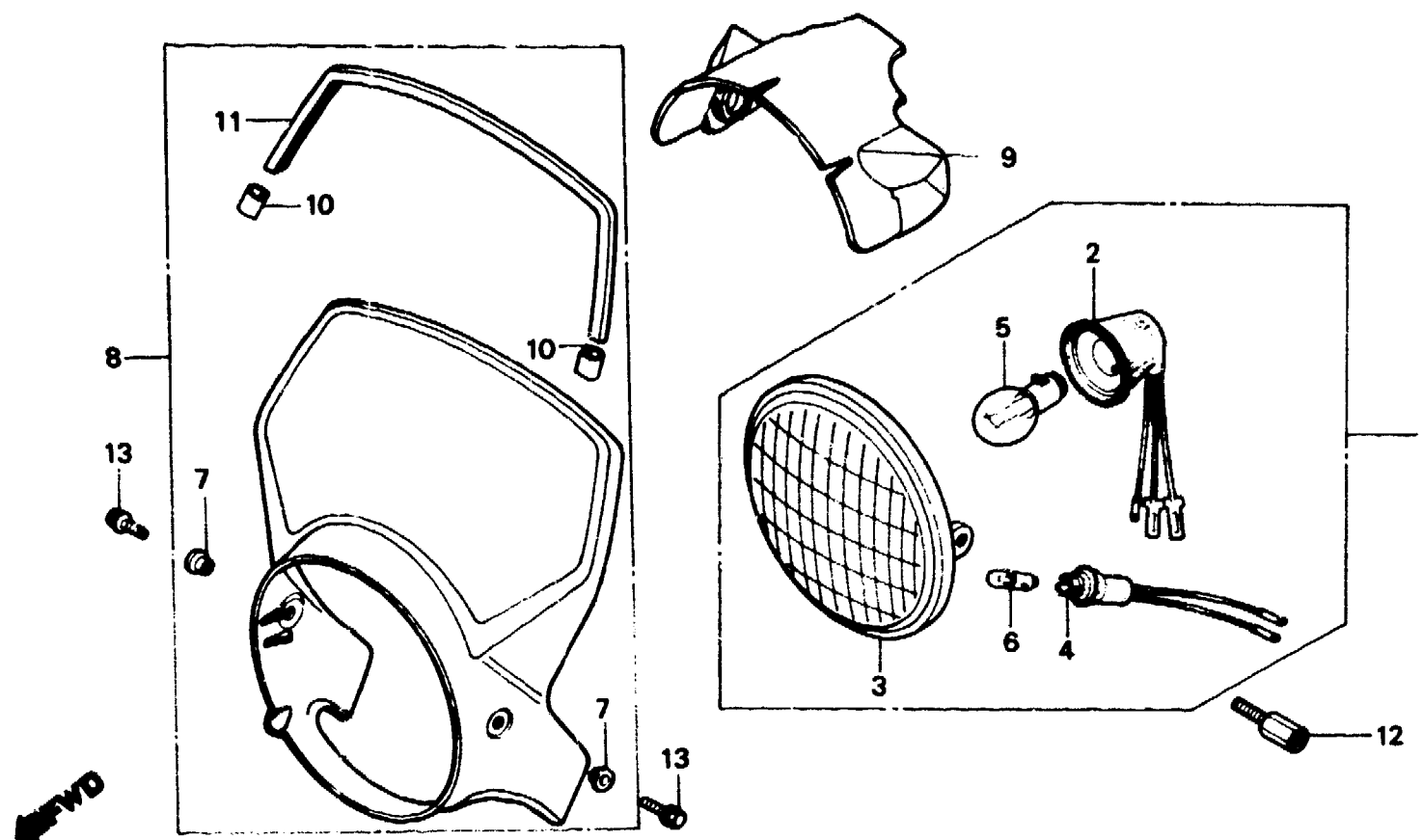
F-1-6

Headlight
(XL250Rc-B,E,ED.)
(G1,G2,IT,SD,SW)

Phare
(XL250Rc-B,E,ED.)
(G1,G2,IT,SD,SW)

Scheinwerfer
(XL250Rc-B,E,ED.)
(G1,G2,IT,SD,SW)

Faro delantero
(XL250Rc-B,E,ED.)
(G1,G2,IT,SD,SW)



BMC4-23

Service item	F.R.T.	Ref. No.	Part No.	Description	Reqd. No.				Serial No.	Area code
					S	Sz	SA	SA Rc		
HEADLIGHT ASSY. HEADLIGHT UNIT INC. RELATIVE PART VISOR SET, FR. RUBBER, FR. VISOR	0.1	1	33100-MC4-610	HEADLIGHT ASSY.					1	B,E,ED,G1,G2,IT,SD,SW
		2	33110-MC4-610	SOCKET ASSY., HEADLIGHT					1	B,E,ED,G1,G2,IT,SD,SW
		3	33120-MC4-610	HEADLIGHT UNIT					1	B,E,ED,G1,G2,IT,SD,SW
		4	33150-183-621	SOCKET ASSY., POSITION LIGHT					1	B,E,ED,G1,G2,IT,SD,SW
		5	34901-388-611	BULE, HEADLIGHT (LOCAL PROCUREMENT)					1	B,E,ED,G1,G2,IT,SD,SW
		6	34903-388-611	BULB, POSITION (12V 4W) (LOCAL PROCUREMENT PART)					1	B,E,ED,G1,G2,IT,SD,SW
		7	61101-441-000	COLLAR, FR. FENDER SETTING					2	B,E,ED,G1,G2,IT,SD,SW
		8	613A0-KB7-600ZA	VISOR SET, FR. *R-110*					1	B,E,ED,SD,SW
			613A0-KB7-600ZB	VISOR SET, FR. *NH-24*					1	B,E,ED,SD,SW
			613A0-KB7-600ZC	VISOR SET, FR. *NH-104M-U*					1	B,E,ED,SD,SW
	613A0-KB7-610ZA	VISOR SET, FR. *R-110*					1	G1,G2		

H 15

F-1-6

Headlight

(XL250Rc-B,E,ED.)
(G1,G2,IT,SD,SW)

Phare

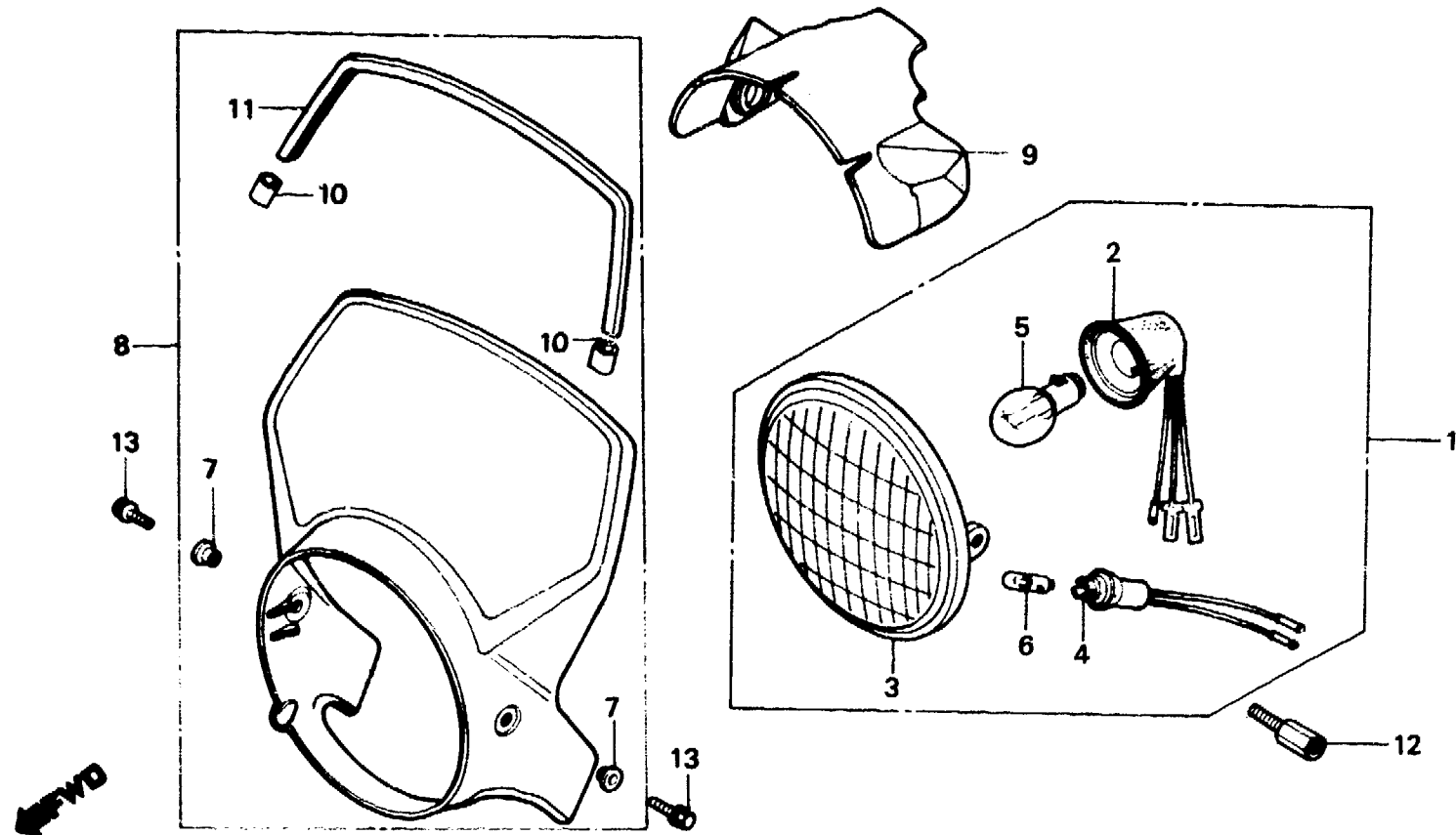
(XL250Rc-B,E,ED.)
(G1,G2,IT,SD,SW)

Scheinwerfer

(XL250Rc-B,E,ED.)
(G1,G2,IT,SD,SW)

Faro delantero

(XL250Rc-B,E,ED.)
(G1,G2,IT,SD,SW)



DMC4-23

Service item	F.R.T.	Ref. No.	Part No.	Description	Reqd. No.					Serial No.	Area code
					S	Sz	SA	Sb	Rc		
			613A0-KB7-610ZB	VISOR SET, FR. *NH-24*					1		G1,G2
			613A0-KB7-610ZC	VISOR SET, FR. *NH-104M-U*					1		G1,G2
			613A0-KB7-770ZA	VISOR SET, FR. *R-110*					1		IT
			613A0-KB7-770ZB	VISOR SET, FR. *NH-24*					1		IT
			613A0-KB7-770ZC	VISOR SET, FR. *NH-104M-U*					1		IT
		9	61306-KB7-000	RUBBER, FR. VISOR					1		B,E,ED,G1,G2,IT,SD,SW
		10	64102-MA3-720	CLIP, SCREEN MOULDING					2		G1,G2
		11	64105-KB7-610	MOULDING, FR. VISOR					1		G1,G2
		12	90123-KB7-000	BOLT, HEADLIGHT STAY					2		B,E,ED,G1,G2,IT,SD,SW
		13	95700-06012-00	BOLT, FLANGE, 6X12					2		B,E,ED,G1,G2,IT,SD,SW

H 16

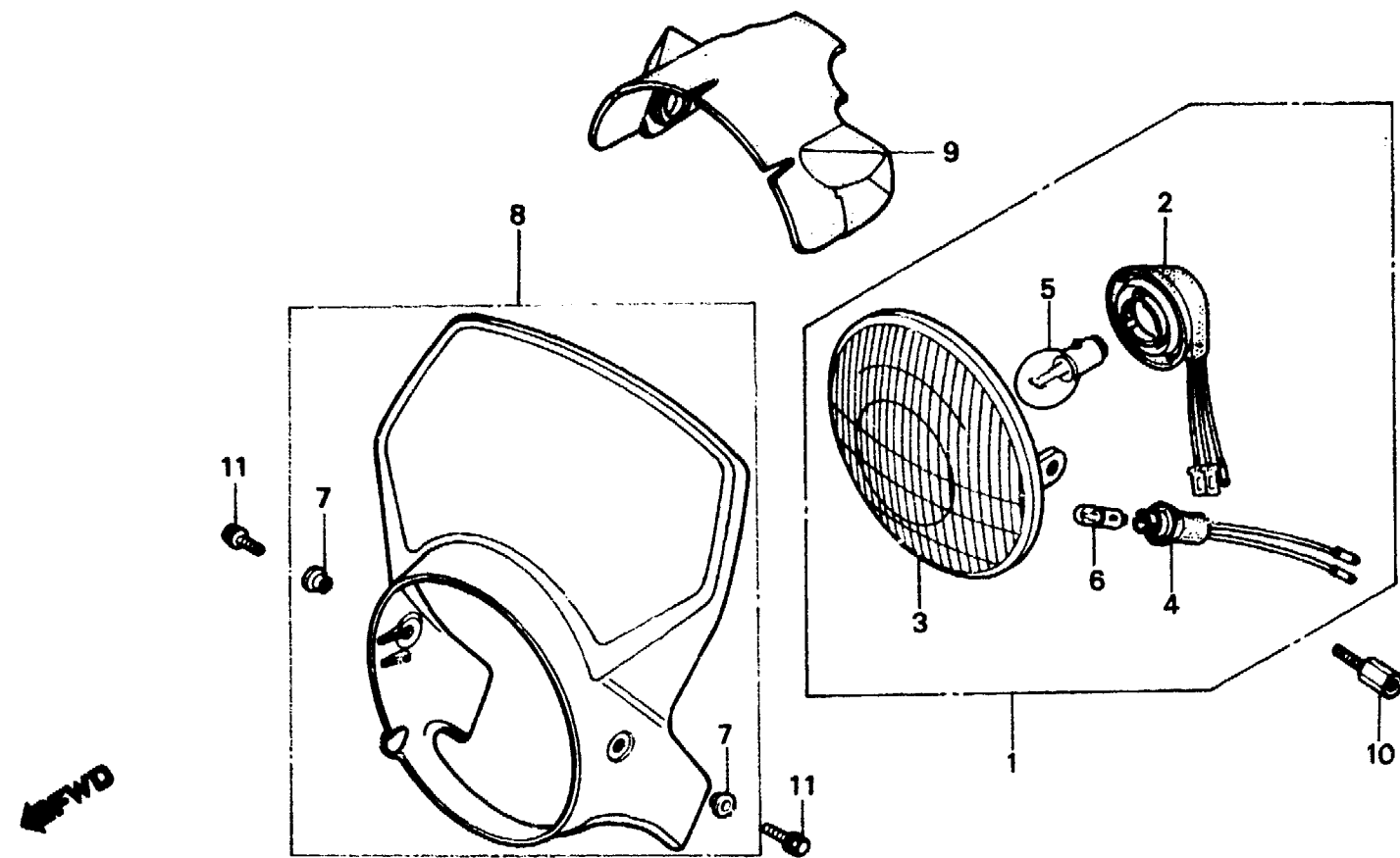
F-1-7

**Headlight
(XL250Rc-F1,F2)**

**Phare
(XL250Rc-F1,F2)**

**Scheinwerfer
(XL250Rc-F1,F2)**

**Faro delantero
(XL250Rc-F1,F2)**



BMC4-24

Service item	F.R.T.	Ref. No.	Part No.	Description	Reqd. No.				Serial No.	Area code
					S	Sz	SA	Sb		
HEADLIGHT ASSY. INC. RELATIVE PART SOCKET ASSY., HEADLIGHT HEADLIGHT UNIT VISOR SET, FR. RUBBER, FR. VISOR	0.1	1	33100-MC4-620	HEADLIGHT ASSY.					2	F1,F2
		2	33110-MC4-620	SOCKET ASSY., HEADLIGHT					1	F1,F2
		3	33120-MC4-620	HEADLIGHT UNIT					1	F1,F2
		4	33150-183-621	SOCKET ASSY., POSITION LIGHT					1	F1,F2
		5	34901-369-621	BULB, HEADLIGHT (LOCAL PROCUREMENT)					1	F1,F2
		6	34903-388-611	BULB, POSITION (12V 4W) (LOCAL PROCUREMENT PART)					1	F1,F2
		7	61101-441-000	COLLAR, FR. FENDER SETTING					2	F1,F2
		8	613A0-KB7-600ZA	VISOR SET, FR. *R-110*					1	F1,F2
			613A0-KB7-600ZB	VISOR SET, FR. *NH-24*					1	F1,F2
			613A0-KB7-600ZC	VISOR SET, FR. *NH-104M-U*					1	F1,F2
9	61306-KB7-000	RUBBER, FR. VISOR					1	F1,F2		
10	90123-KB7-000	BOLT, HEADLIGHT STAY					2	F1,F2		

1982.01.10

E

H16

I 1

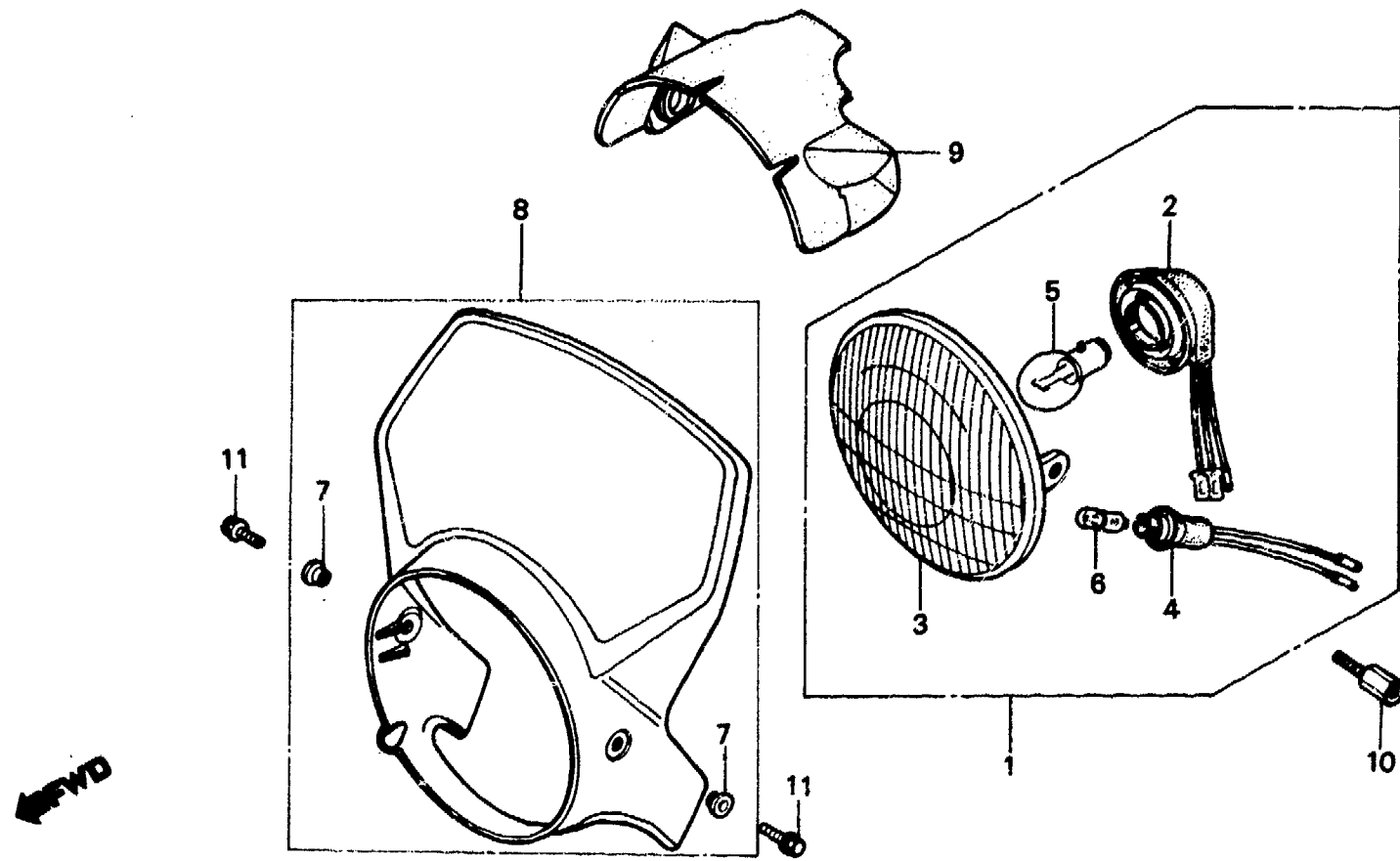
F-1-7

**Headlight
(XL250Rc-F1,F2)**

**Phare
(XL250Rc-F1,F2)**

**Scheinwerfer
(XL250Rc-F1,F2)**

**Faro delantero
(XL250Rc-F1,F2)**



BMC4-24

Service item	F.R.T.	Ref. No.	Part No.	Description	Reqd. No.					Serial No.	Area code
					S	Sz	SA	Sb	Rc		
		11	95700-06012-00	BOLT, FLANGE, 6X12					2		F1,F2

1982.01.10

E

11

I 2

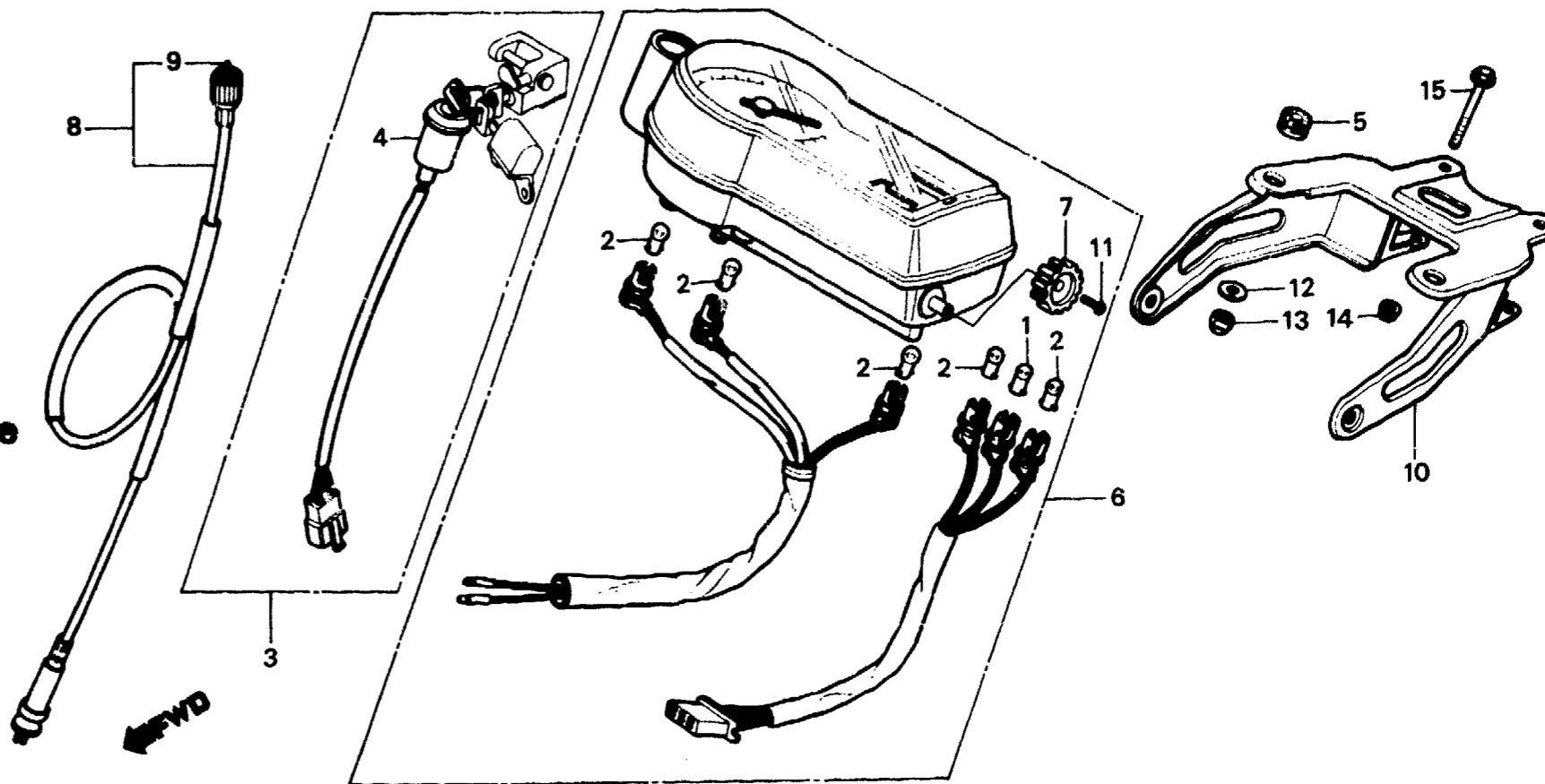
F-2

**Speedometer • Headlight stay
(XL250S • Sz • SA)**

**Compteur de vitesse • Appui de phare
(XL250S • Sz • SA)**

**Geschwindigkeitsmesser •
Scheinwerferstütze
(XL250S • Sz • SA)**

**Velocímetro • Tirante de faro
(XL250S • Sz • SA)**



B428-18B

Service item	F.R.T.	Ref. No.	Part No.	Description	Reqd. No.					Serial No.	Area code
					S	Sz	SA	Sb	Rc		
KEY SET (BE, DE, F, G, G1, G2, SW)	0.6	1	34902-202-000	BULB, DASH (6V3W)	1	1	1				
KEY SET (CM, DK, DM, SA, U)	0.9	2	34908-230-000	BULB, SPEEDOMETER (6V1.7W)	5	5	5				
SWITCH ASSY., COMBINATION	0.3	3	35010-428-010	KEY SET	1	1				CM,DK,DM,SA,U	
SPEEDOMETER ASSY.			35010-428-600	KEY SET	1	1				B,E,ED,F,F1,F2,G,G1 G2,SD,SW	
CABLE ASSY., SPEEDOMETER	0.2		35010-428-870	KEY SET					1	CM,DK,DM,SA,U	
CABLE, SPEEDOMETER INNER	0.1	4	35100-428-017	SWITCH ASSY., COMBINATION	1	1	1				
STAY COMP., HEADLIGHT CASE	0.7	5	36043-657-000	GROMMET, WIRE HARNESS	2	2	2				
		6	37200-428-601	SPEEDOMETER ASSY. (MPH)	1					DM,E	
			37200-428-611	SPEEDOMETER ASSY. (KPH)	1					DK,ED,F,G,SA,SW,U	
			37200-428-721	SPEEDOMETER ASSY. (KPH,MPH)	1	1	1			CM	
			37200-428-602	SPEEDOMETER ASSY. (MPH)					1	DM,E	
			37200-428-612	SPEEDOMETER ASSY. (KPH)					1	B,DK,ED,F1,F2,G1,G2 SA,SD,SW,U	
		7	37220-428-611	KNOB, TRIP METER					1		

I 3

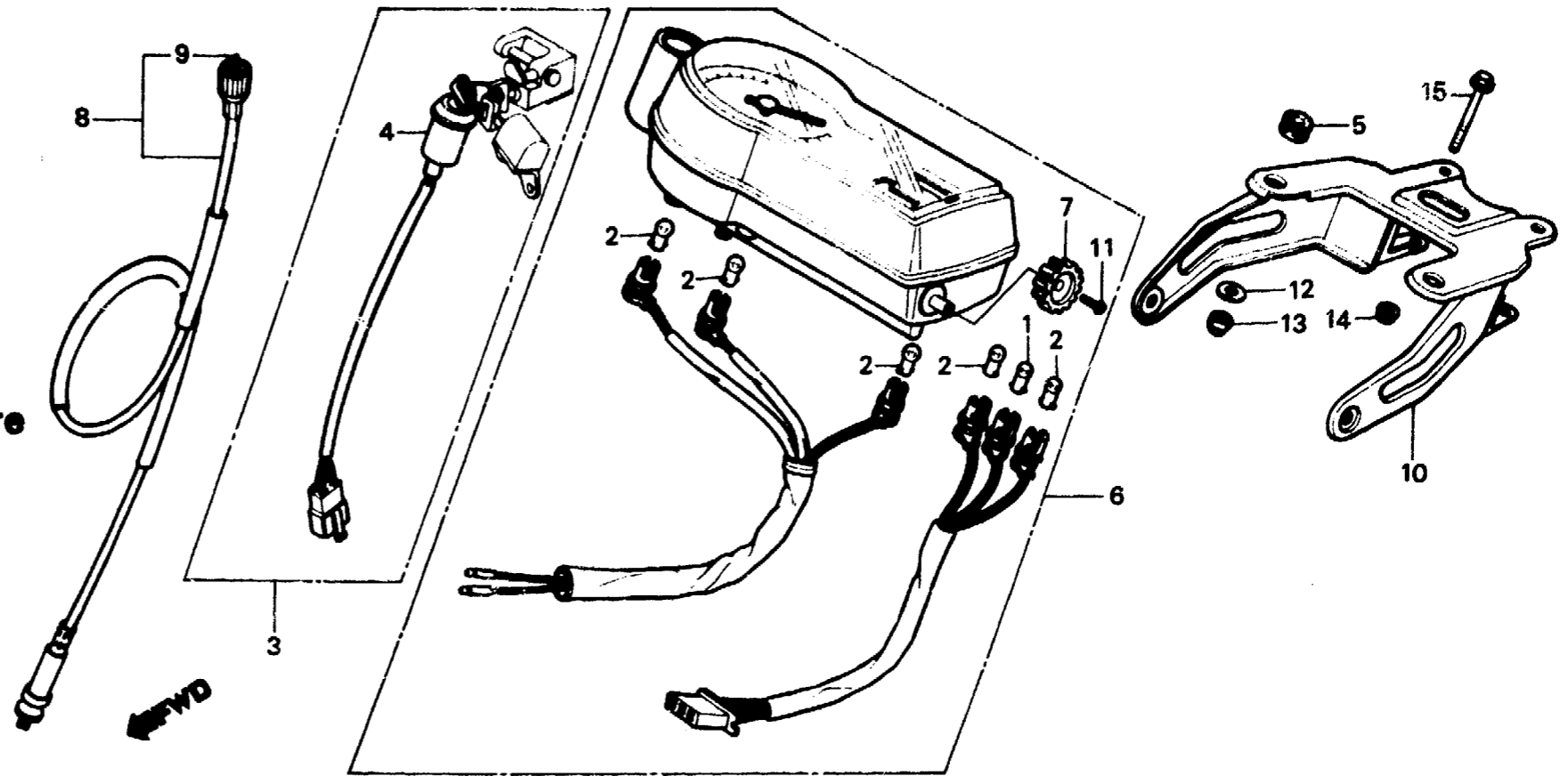
F-2

Speedometer • Headlight stay
(XL250S • Sz • SA)

Compteur de vitesse • Appui de phare
(XL250S • Sz • SA)

Geschwindigkeitsmesser •
Scheinwerferstütze
(XL250S • Sz • SA)

Velocímetro • Tirante de faro
(XL250S • Sz • SA)



B428-18B

Service item	F.R.T.	Ref. No.	Part No.	Description	Reqd. No.					Serial No.	Area code
					S	Sz	SA	Sb	Rc		
		8	44830-428-000	CABLE ASSY., SPEEDOMETER	1	1	1				
		9	44831-371-010	CABLE, SPEEDOMETER INNER	1	1	1				
		10	61310-428-000	STAY COMP., HEADLIGHT CASE	1	1	1				B, CM, DK, DM, F1, F2, SA, U
			61310-428-610	STAY COMP., HEADLIGHT CASE	1		1				E, F, G
					1		1				ED, G1, G2, SD, SW
		11	90102-434-671	SCREW, TAPPING			1				
		12	90525-030-000	WASHER B, HANDLE HOLDER	2	2	2				
				SETTING							
		13	94021-06000	NUT, CAP, 6MM	2	2	2				
		14	94050-06000	NUT, FLANGE, 6MM	2	2	2				
		15	95700-06045-00	BOLT, FLANGE, 6X45	2	2	2				

I 4

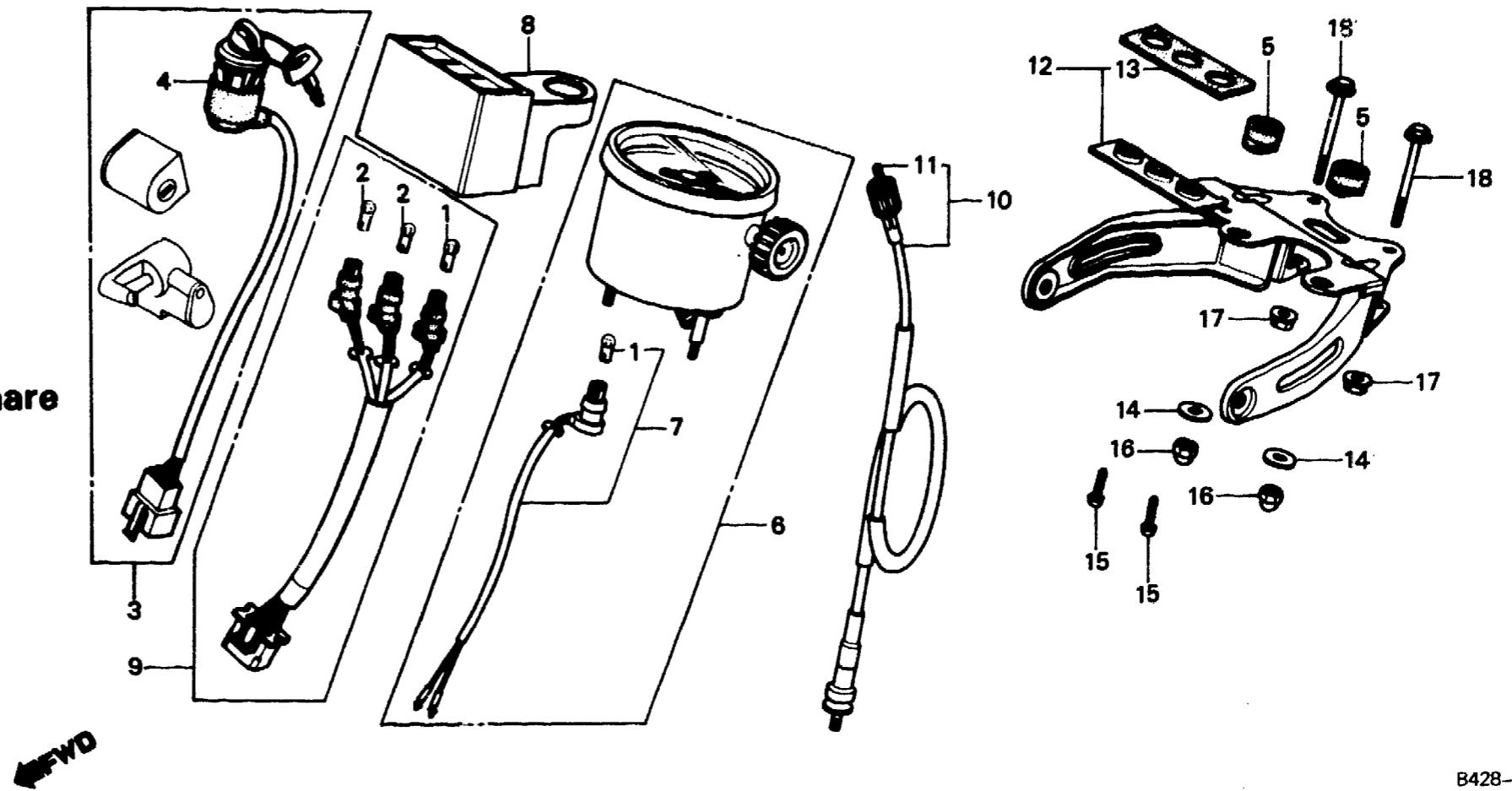
F-2-1

Speedometer • Headlight stay
(XL250Sb-CM)

Compteur de vitesse • Appui de phare
(XL250Sb-CM)

Geschwindigkeitsmesser •
Scheinwerferstütze
(XL250Sb-CM)

Velocímetro • Tirante de faro
(XL250Sb-CM)



B428-76

Service item	F.R.T.	Ref. No.	Part No.	Description	Reqd. No.					Serial No.	Area code
					S	Sz	SA	Sb	Rc		
KEY SET	0.9	1	34902-202-000	BULB, DASH (6V3W)					2		CM
SWITCH ASSY., COMBINATION	0.3	2	34908-230-000	BULB, SPEEDOMETER (6V1.7W)					2		CM
CASE, PILOT		3	35010-428-730	KEY SET					1		CM
SPEEDOMETER ASSY.	0.2	4	35100-428-840	SWITCH ASSY., COMBINATION					1		CM
SOCKET COMP., ILLUMINATION		5	36043-657-000	GROMMET, WIRE HARNESS					2		CM
CORD COMP., PILOT		6	37200-428-750	SPEEDOMETER ASSY. (KPH)					1		CM
CABLE ASSY., SPEEDOMETER	0.1	7	37224-437-711	SOCKET COMP., ILLUMINATION					1		CM
CABLE, SPEEDOMETER INNER		8	37310-428-841	CASE, PILOT					1		CM
STAY COMP., HEADLIGHT CASE	0.4	9	37311-428-841	CORD COMP., PILOT					1		CM
		10	44830-428-010	CABLE ASSY., SPEEDOMETER					1		CM
		11	44831-371-010	CABLE, SPEEDOMETER INNER					1		CM
		12	61310-428-840	STAY COMP., HEADLIGHT CASE					1		CM
		13	61313-428-840	MOUNT, PILOT CASE					1		CM
		14	90525-030-000	WASHER B, HANDLE HOLDER					2		CM

SETTING

I 5

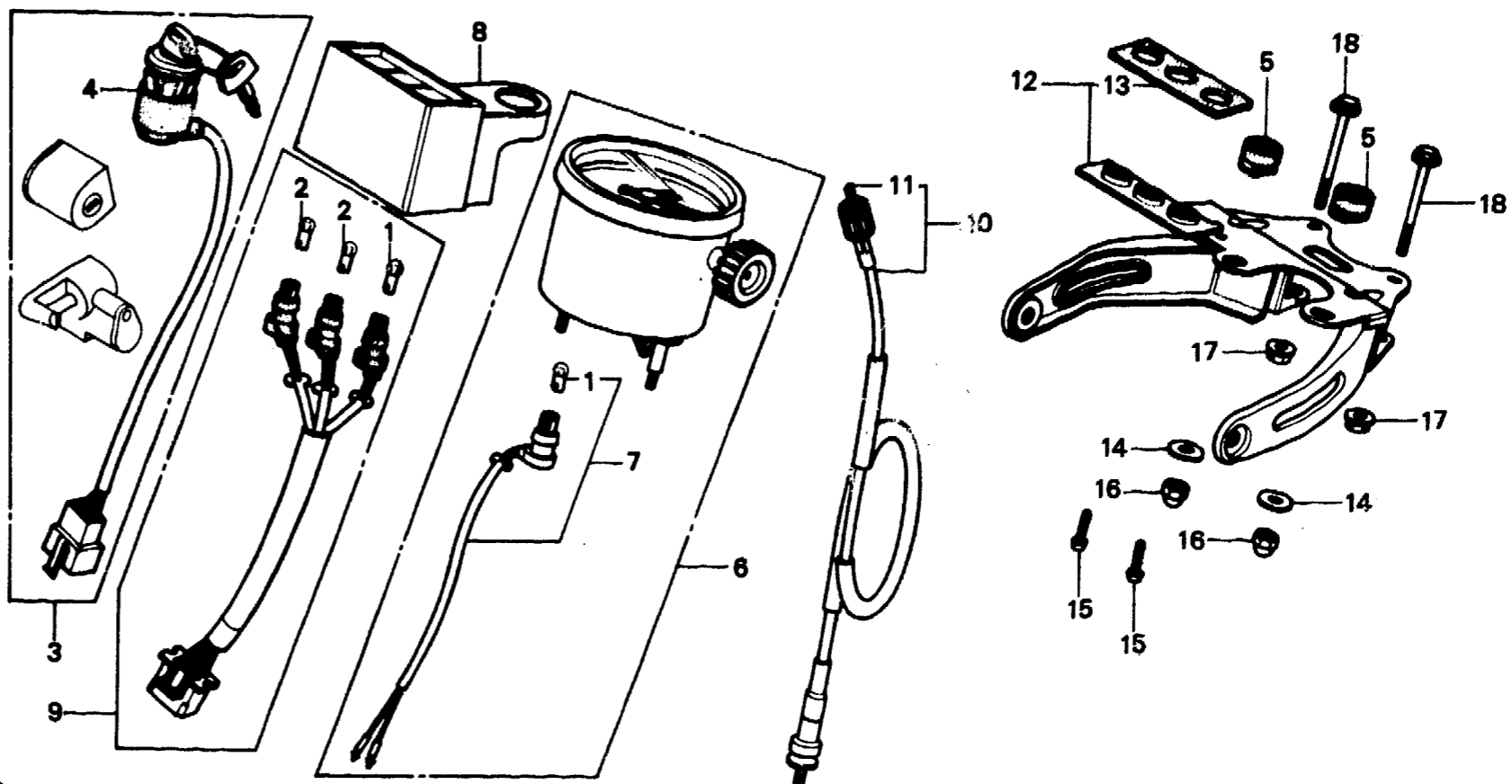
F-2-1

Speedometer • Headlight stay
(XL250SB-CM)

Compteur de vitesse • Appui de phare
(XL250SB-CM)

Geschwindigkeitsmesser •
Scheinwerferstütze
(XL250SB-CM)

Velocímetro • Tirante de faro
(XL250SB-CM)



B428-76

Service item	F.R.T.	Ref. No.	Part No.	Description	Reqd. No.				Serial No.	Area code
					S	Sz	SA	S _B		
		15	93901-34480	SCREW, TAPPING, 4X16				2		CM
		16	94021-06000	NUT, CAP, 6MM				2		CM
		17	94050-06000	NUT, FLANGE, 6MM				2		CM
		18	95700-06045-00	BOLT, FLANGE, 6X45				2		CM

I 6

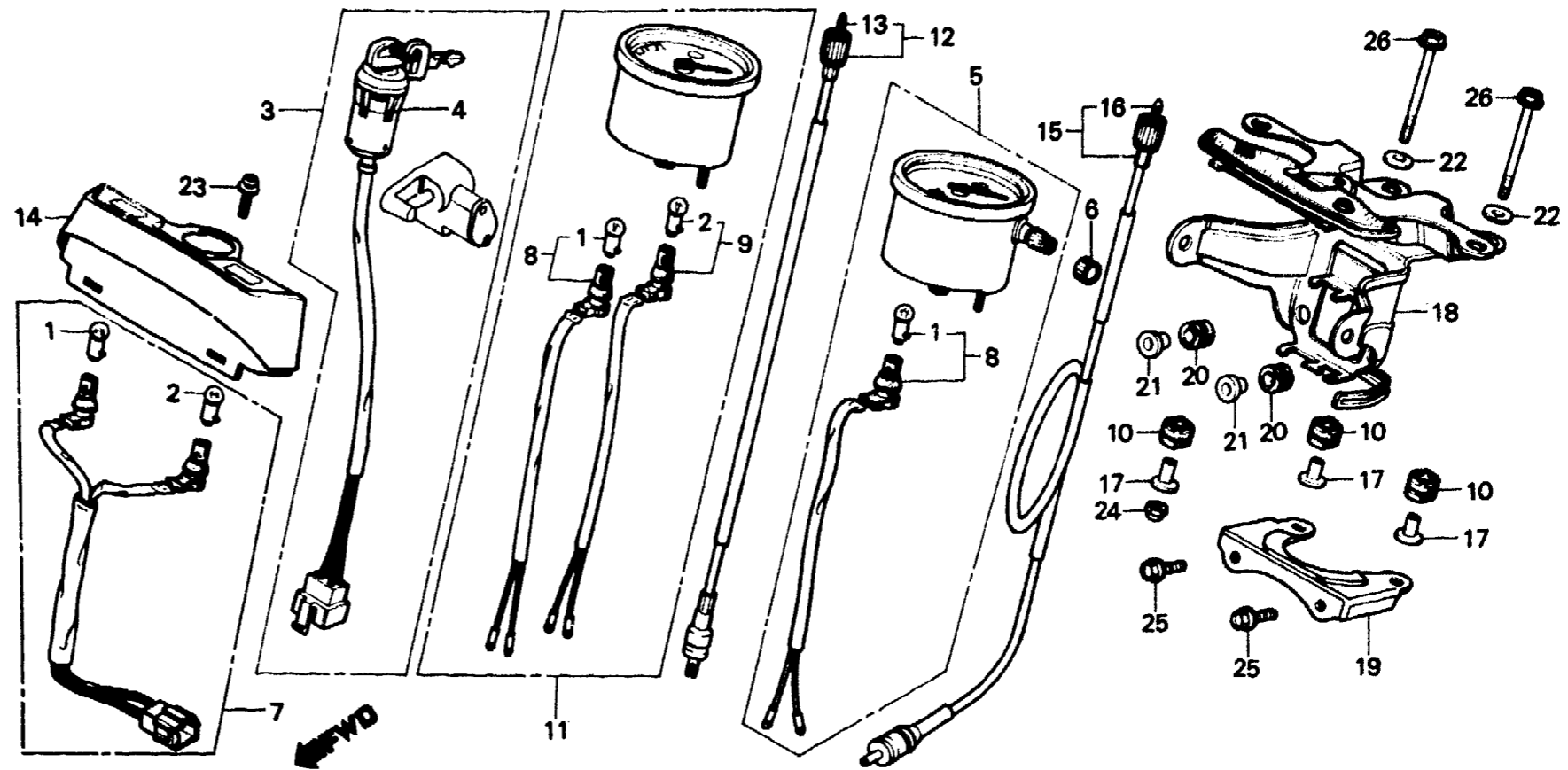
F-2-2

Meter • Headlight stay
(XL250S_B-B,DK,DM,E,ED,F1,
F2,G1,G2,SA,SD,SW,U)

Compteur • Appui de phare
(XL250S_B-B,DK,DM,E,ED,F1,
F2,G1,G2,SA,SD,SW,U)

Messer • Scheinwerferstütze
(XL250S_B-B,DK,DM,E,ED,F1,
F2,G1,G2,SA,SD,SW,U)

Medidor • Tirante de faro
(XL250S_B-B,DK,DM,E,ED,F1,
F2,G1,G2,SA,SD,SW,U)



B435-67

Service item	F.R.T.	Ref. No.	Part No.	Description	Reqd. No.				Serial No.	Area code
					S	Sz	SA	S _B		
KEY SET	0.5	1	34902-202-000	BULB, DASH (6V3W)				3	B,DK,DM,E,ED,F1,F2,G1	
SWITCH ASSY., COMBINATION	0.3								G2,SA,SD,SW,U	
SPEEDOMETER ASSY.	0.2	2	34908-230-000	BULB, SPEEDOMETER (6V1.7W)				2	B,DK,DM,E,ED,F1,F2,G1	
TACHOMETER ASSY.									G2,SA,SD,SW,U	
CABLE ASSY., TACHOMETER		3	35010-428-830	KEY SET				1	B,DK,DM,E,ED,F1,F2,G1	
CASE, PILOT									G2,SA,SD,SW,U	
CORD COMP., PILOT	0.1	4	35100-428-0	SWITCH ASSY., COMBINATION				1	B,DK,DM,E,ED,F1,F2,G1	
SOCKET COMP., ILLUMINATION									G2,SA,SD,SW,U	
SOCKET COMP., HIGH BEAM PILOT		5	37200-42-831	SPEEDOMETER ASSY. (MPH)				1	DM,E	
CABLE, TACHOMETER INNER			37200-428-851	SPEEDOMETER ASSY. (KPH)				1	B,DK,ED,F1,F2,G1,G2	
CABLE ASSY., SPEEDOMETER									SA,SD,SW,U	
BRACKET, HEADLIGHT LOWER STAY	0.4	6	37202-371-610	CAP, TRIP METER KNOB				1	G1,G2	
BRACKET, HEADLIGHT CASE		7	37223-428-830	CORD COMP., PILOT				1	B,DK,DM,E,ED,F1,F2,G1	
									G2,SA,SD,SW,U	
		8	37224-437-711	SOCKET COMP., ILLUMINATION				2	B,DK,DM,E,ED,F1,F2,G1	
									G2,SA,SD,SW,U	
		9	37227-428-831	SOCKET COMP., HIGH BEAM PILOT				1	B,DK,DM,E,ED,F1,F2,G1	
									G2,SA,SD,SW,U	

I 7

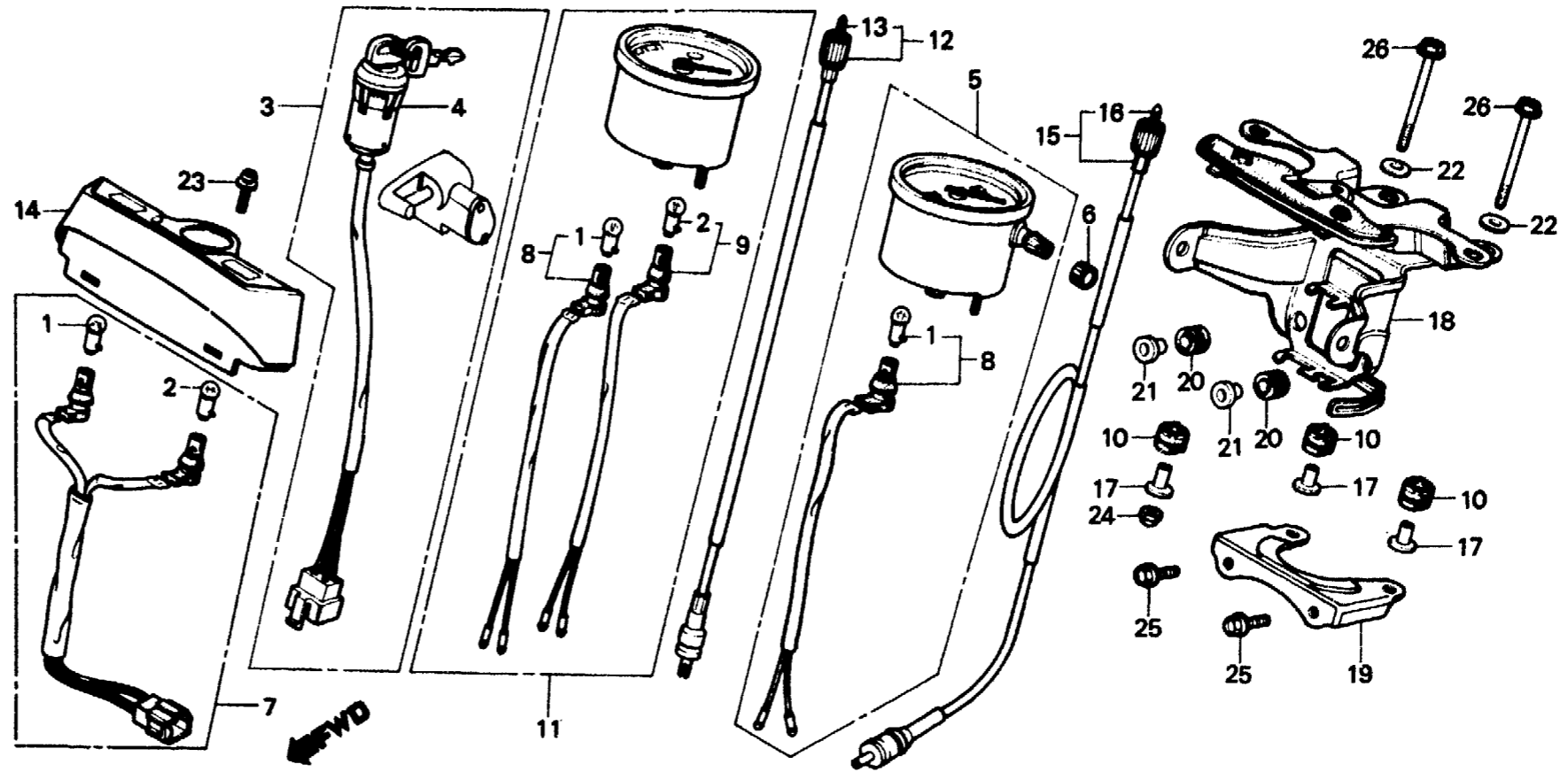
F-2-2

Meter • Headlight stay
(XL250S_B-B,DK,DM,E,ED,F1,
F2,G1,G2,SA,SD,SW,U)

Compteur • Appui de phare
(XL250S_B-B,DK,DM,E,ED,F1,
F2,G1,G2,SA,SD,SW,U)

Messer • Scheinwerferstütze
(XL250S_B-B,DK,DM,E,ED,F1,
F2,G1,G2,SA,SD,SW,U)

Medidor • Tirante de faro
(XL250S_B-B,DK,DM,E,ED,F1,
F2,G1,G2,SA,SD,SW,U)



B435-67

Service item	F.R.T.	Ref. No.	Part No.	Description	Reqd. No.				Serial No.	Area code
					S	Sz	SA	SA Rc		
		10	37242-435-700	RUBBER, SPEEDOMETER MOUNTING				6		B,DK,DM,E,ED,F1,F2,G1 G2,SA,SD,SW,U
		11	37250-428-791	TACHOMETER ASSY.				1		DK,DM,U
			37250-428-831	TACHOMETER ASSY.				1		B,E,ED,F1,F2,G1,G2,SA SD,SW
		12	37260-428-830	CABLE ASSY., TACHOMETER				1		B,DK,DM,E,ED,F1,F2,G1 G2,SA,SD,SW,U
		13	37261-428-830	CABLE, TACHOMETER INNER				1		B,DK,DM,E,ED,F1,F2,G1 G2,SA,SD,SW,U
		14	37310-KB1-711	CASE, PILOT				1		B,DK,DM,E,ED,F1,F2,G1 G2,SA,SD,SW,U
		15	44830-428-830	CABLE ASSY., SPEEDOMETER				1		B,DK,DM,ED,F1,F2,G1 G2,SA,SD,SW,U
			44830-428-940	CABLE ASSY., SPEEDOMETER				1		E
		16	44831-371-010	CABLE, SPEEDOMETER INNER				1		B,DK,DM,E,ED,F1,F2,G1 G2,SA,SD,SW,U
		17	50324-425-010	COLLAR, 6.3X13				6		B,DK,DM,E,ED,F1,F2,G1 G2,SA,SD,SW,U

I 8

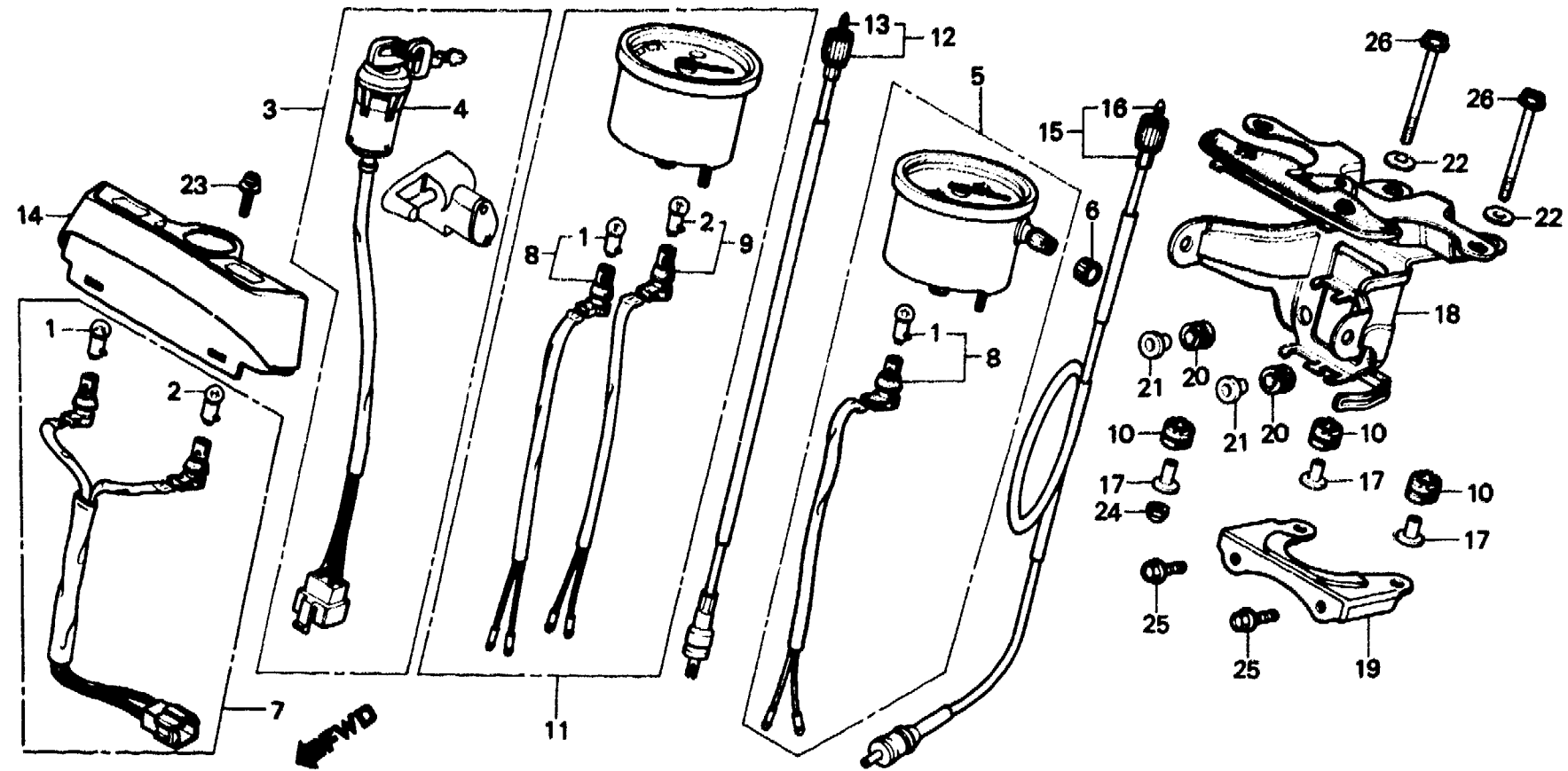
F-2-2

Meter • Headlight stay
(XL250S_B-B,DK,DM,E,ED,F1,
F2,G1,G2,SA,SD,SW,U)

Compteur • Appui de phare
(XL250S_B-B,DK,DM,E,ED,F1,
F2,G1,G2,SA,SD,SW,U)

Messer • Scheinwerferstütze
(XL250S_B-B,DK,DM,E,ED,F1,
F2,G1,G2,SA,SD,SW,U)

Medidor • Tirante de faro
(XL250S_B-B,DK,DM,E,ED,F1,
F2,G1,G2,SA,SD,SW,U)



B435-67

Service item	F.R.T.	Ref. No.	Part No.	Description	Reqd. No.					Serial No.	Area code
					S	Sz	SA	Sb	Rc		
		18	61310-428-830ZA	BRACKET, HEADLIGHT CASE *NH-105*					1		B,DK,DM,E,ED,F1,F2,G1 G2,SA,SD,SW,U
		19	61312-435-760	BRACKET, HEADLIGHT LOWER STAY					1		B,DK,DM,E,ED,F1,F2,G1 G2,SA,SD,SW,U
		20	80101-283-000	RUBBER, RR. FENDER CUSHION					2		B,DK,DM,E,ED,F1,F2,G1 G2,SA,SD,SW,U
		21	84706-163-670	COLLAR, TAILLIGHT MOUNTING					2		B,DK,DM,E,ED,F1,F2,G1 G2,SA,SD,SW,U
		22	90525-030-000	WASHER B, HANDLE HOLDER SETTING					2		B,DK,DM,E,ED,F1,F2,G1 G2,SA,SD,SW,U
		23	93891-06012-07	SCREW-WASHER, 6X12					1		B,DK,DM,E,ED,F1,F2,G1 G2,SA,SD,SW,U
		24	94021-06000-05	NUT, CAP, 6MM					4		B,DK,DM,E,ED,F1,F2,G1 G2,SA,SD,SW,U
		25	95700-06016-00	BOLT, FLANGE, 6X16					2		B,DK,DM,E,ED,F1,F2,G1 G2,SA,SD,SW,U
		26	95700-06060-00	BOLT, FLANGE, 6X60					2		B,DK,DM,E,ED,F1,F2,G1 G2,SA,SD,SW,U

I 9

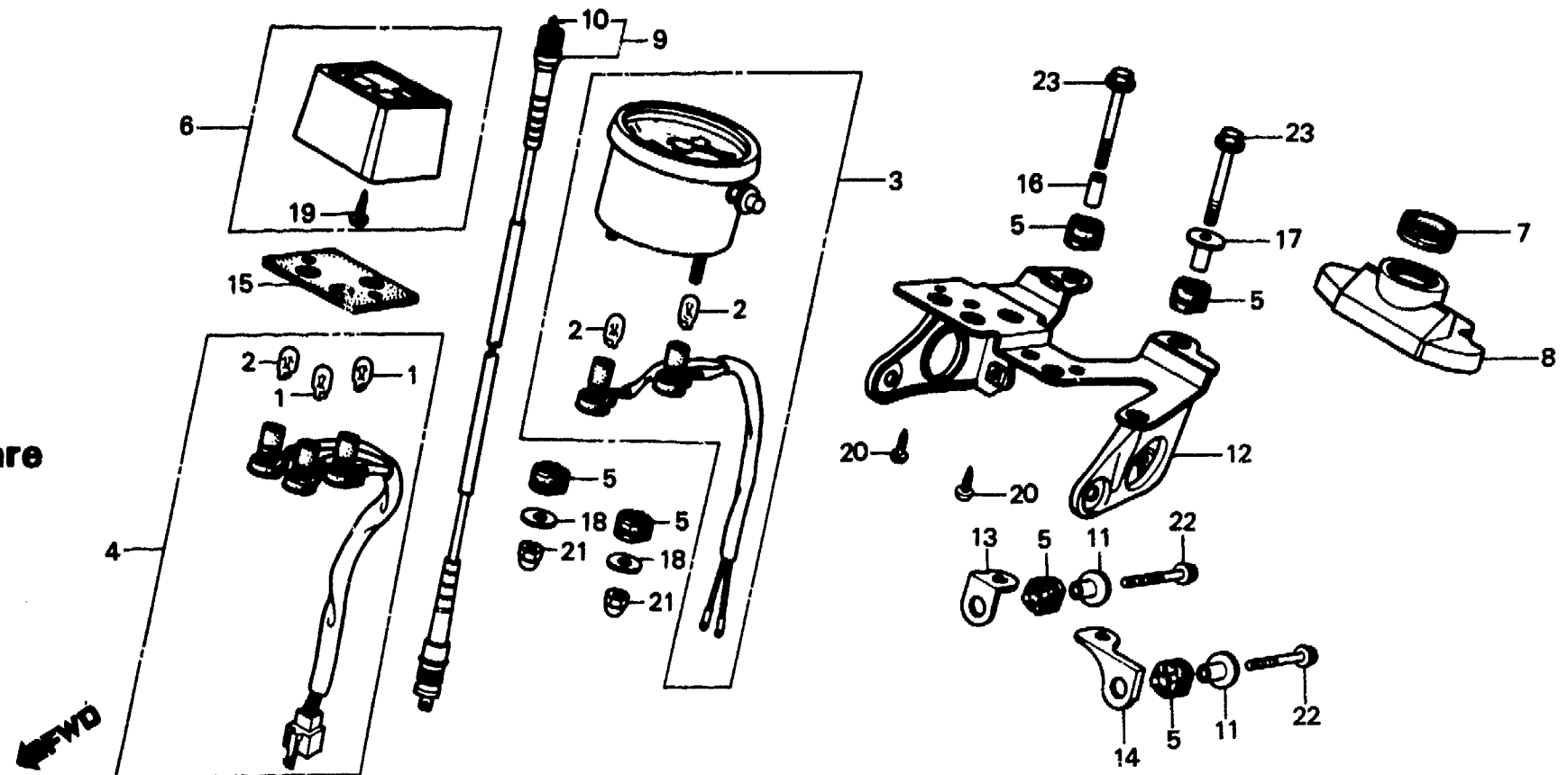
F-2-3

Speedometer • Headlight stay
(XL250Rc-CM)

Compteur de vitesse • Appui de phare
(XL250Rc-CM)

Geschwindigkeitsmesser •
Scheinwerferstütze
(XL250Rc-CM)

Velocímetro • Tirante de faro
(XL250Rc-CM)



BMC4-3

Service item	F.R.T.	Ref. No.	Part No.	Description	Reqd. No. XL250					Serial No.	Area code
					S	Sz	SA	Sb	Rc		
SPEEDOMETER ASSY. •CORD COMP., PILOT •CASE ASSY., PILOT •COVER, IGNITION SWITCH •CABLE ASSY., SPEEDOMETER STAY COMP., HEADLIGHT CASE SUB STAY, HEADLIGHT	0.2	1	34908-GA7-701	BULB, WEDGE BASE (12V3.4W)					2		CM
		2	34908-MB9-871	BULB, WEDGE BASE (12V 1.7W NIPPON SEIKI)					3		CM
		3	37200-KB7-721	SPEEDOMETER ASSY. (KPH/MPH)					1		CM
	0.3 0.1	4	37223-MC4-671	CORD COMP., PILOT					1		CM
		5	37242-435-700	RUBBER, SPEEDOMETER MOUNTING					6		CM
		6	37300-MC4-671	CASE ASSY., PILOT					1		CM
		7	37312-KB7-008	GROMMET, COMBINATION SWITCH					1		CM
		8	37622-MC4-670	COVER, IGNITION SWITCH					1		CM
		9	44830-KB7-000	CABLE ASSY., SPEEDOMETER					1		CM
		10	44831-KB7-000	CABLE, INNER					1		CM
		11	50324-425-010	COLLAR, 6.3X13					2		CM

I 10

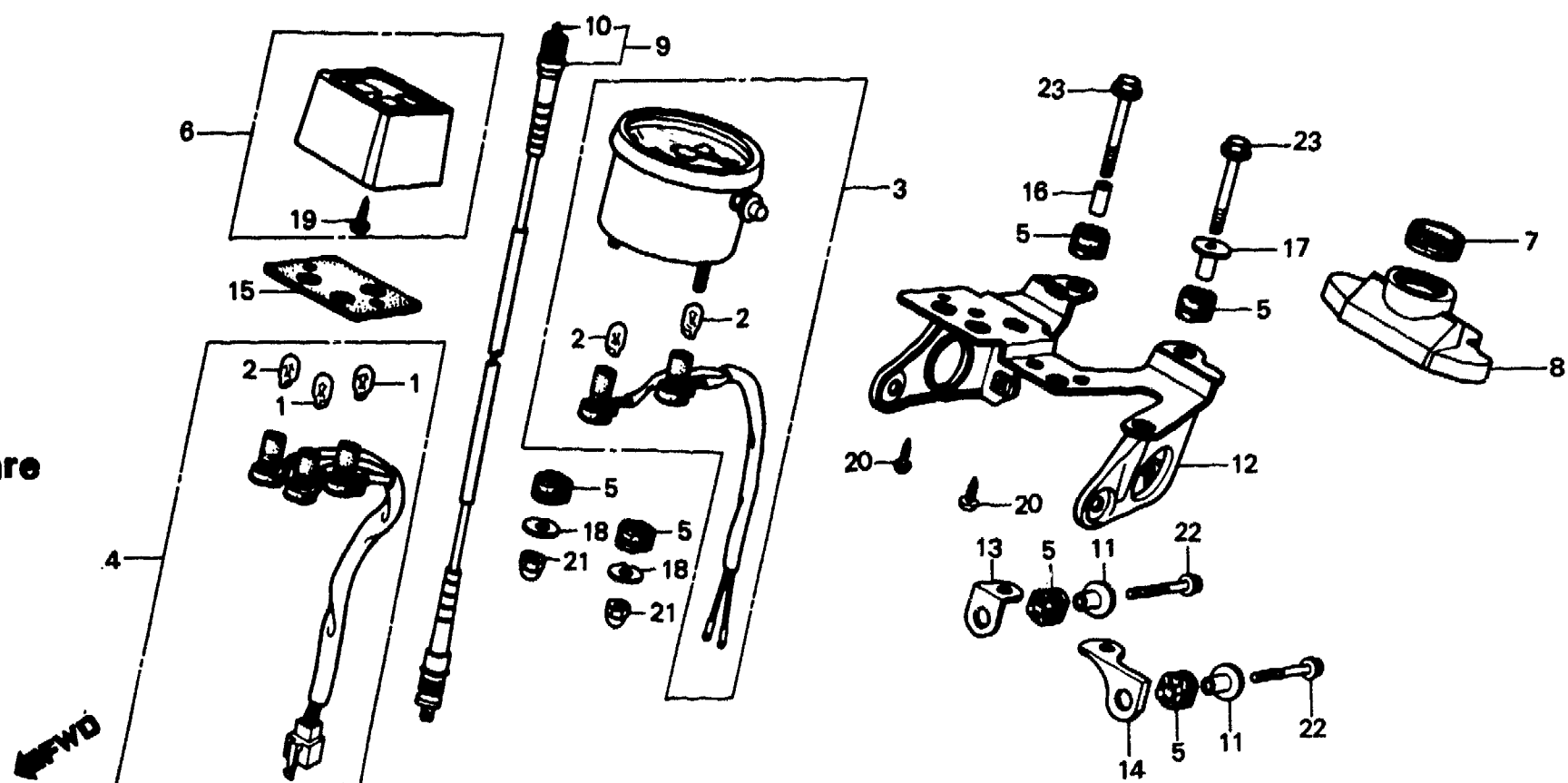
F-2-3

Speedometer • Headlight stay
(XL250Rc-CM)

Compteur de vitesse • Appui de phare
(XL250Rc-CM)

Geschwindigkeitsmesser •
Scheinwerferstütze
(XL250Rc-CM)

Velocimetro • Tirante de faro
(XL250Rc-CM)



BMC4-3

Service item	F.R.T.	Ref. No.	Part No.	Description	Reqd. No.					Serial No.	Area code
					S	Sz	SA	Ss	Rc		
		12	61310-KB7-670	STAY COMP., HEADLIGHT CASE					1		CM
		13	61315-KB7-670	SUB STAY, R. HEADLIGHT					1		CM
		14	61316-KB7-670	SUB STAY, L. HEADLIGHT					1		CM
		15	61317-KB7-000	MOUNT, PILOT CASE					1		CM
		16	84907-174-670	COLLAR, NUMBER BRACKET CUSHION					1		CM
		17	90501-MA3-720	COLLAR, 6.2X13					1		CM
		18	90525-030-000	WASHER B, HANDLE HOLDER					2		CM
				SETTING							
		19	93901-14120	SCREW, TAPPING, 4X8					1		CM
		20	93901-34480	SCREW, TAPPING, 4X16					2		CM
		21	94021-06000	NUT, CAP, 6MM					2		CM
		22	95700-06025-00	BOLT, FLANGE, 6X25					2		CM
		23	95700-06040-00	BOLT, FLANGE, 6X40					2		CM

1982.01.10

E

110

I 11

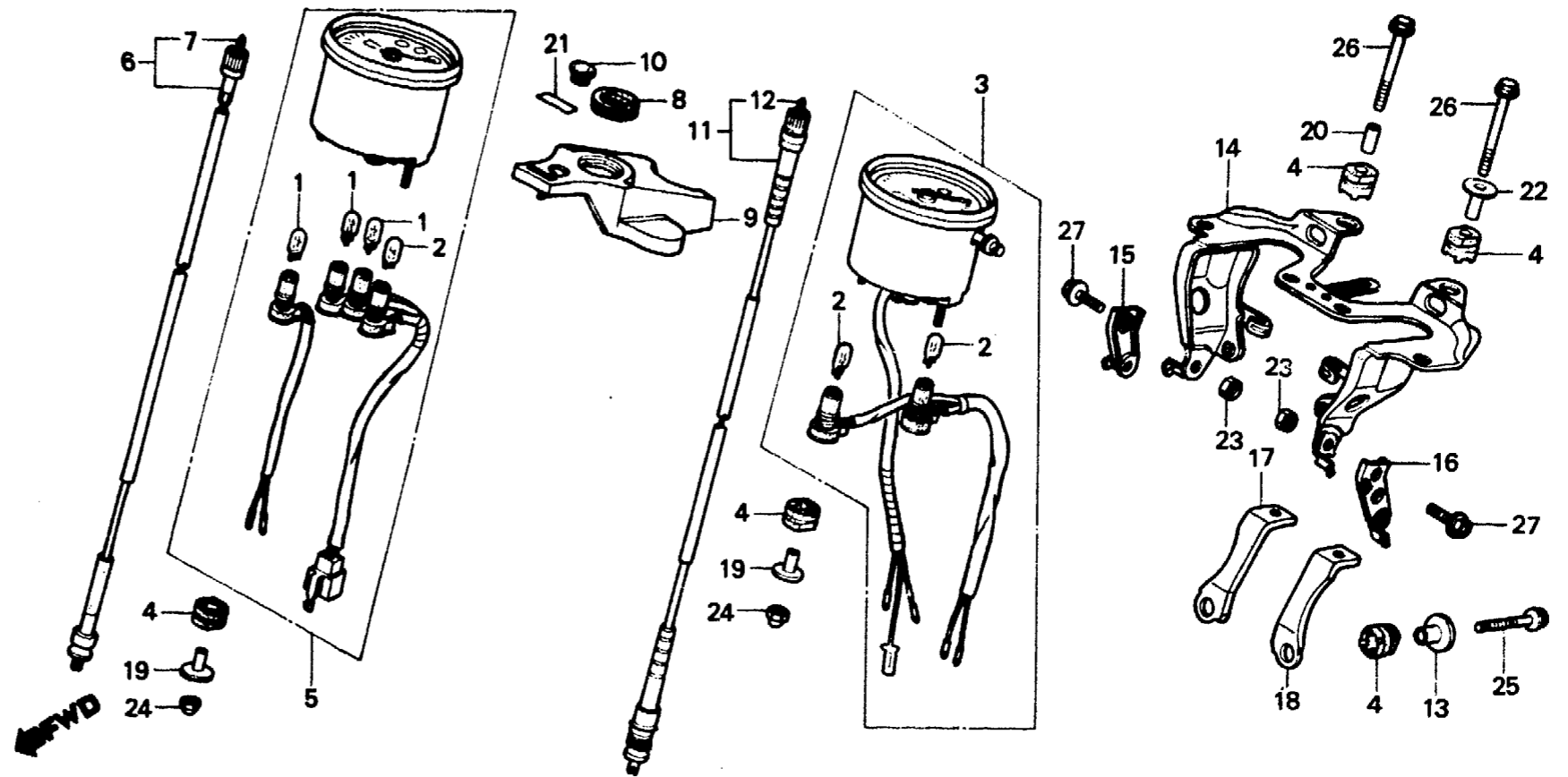
F-2-4

Meter • Headlight stay
(XL250Rc-B,DK,DM,E,ED,F1,
F2,G1,G2,IT,SA,SD,SW,U)

Compteurs • Appui de phare
(XL250Rc-B,DK,DM,E,ED,F1,
F2,G1,G2,IT,SA,SD,SW,U)

Messer • Scheinwerferstütze
(XL250Rc-B,DK,DM,E,ED,F1,
F2,G1,G2,IT,SA,SD,SW,U)

Medidor • Tirante de faro
(XL250Rc-B,DK,DM,E,ED,F1,
F2,G1,G2,IT,SA,SD,SW,U)



BMC4-25

Service item	F.R.T.	Ref. No.	Part No.	Description	Reqd. No.					Serial No.	Area code
					S	Sz	SA	Sb	Rc		
SPEEDOMETER ASSY.	0.3	1	34908-GA7-701	BULB, WEDGE BASE (12V3.4W)					3		B,DK,DM,E,ED,F1,F2,G1
TACHOMETER ASSY.											G2,IT,SA,SD,SW,U
CABLE ASSY., TACHOMETER	0.1	2	34908-MB9-871	BULB, WEDGE BASE (12V 1.7W NIPPON SEIKI)					3		B,DK,DM,E,ED,F1,F2,G1
CABLE, INNER											G2,IT,SA,SD,SW,U
COVER, IGNITION SWITCH	0.2	3	37200-KB7-601	SPEEDOMETER ASSY. (MPH/KPH)					1		DM,E
CABLE ASSY., SPEEDOMETER			37200-KB7-611	SPEEDOMETER ASSY. (KPH)					1		B,DK,ED,F1,F2,G1,G2
SUB STAY, HEADLIGHT											IT,SA,SD,SW,U
STAY COMP., HEADLIGHT CASE	0.5	4	37242-435-700	RUBBER, SPEEDOMETER MOUNTING					8		B,DK,DM,E,ED,F1,F2,G1
		5	37250-KB7-601	TACHOMETER ASSY.					1		G2,IT,SA,SD,SW,U
			37250-KB7-681	TACHOMETER ASSY.					1		B,E,ED,F1,F2,G1,G2,IT
											SA,SD,SW
											DK,DM,U
		6	37260-KB7-000	CABLE ASSY., TACHOMETER					1		B,DK,DM,E,ED,F1,F2,G1
											G2,IT,SA,SD,SW,U
		7	37261-435-760	CABLE, TACHOMETER INNER					1		B,DK,DM,E,ED,F1,F2,G1
											G2,IT,SA,SD,SW,U
		8	37312-KB7-008	GROMMET, COMBINATION SWITCH					1		B,DK,DM,E,ED,F1,F2,G1
											G2,IT,SA,SD,SW,U