

F 3

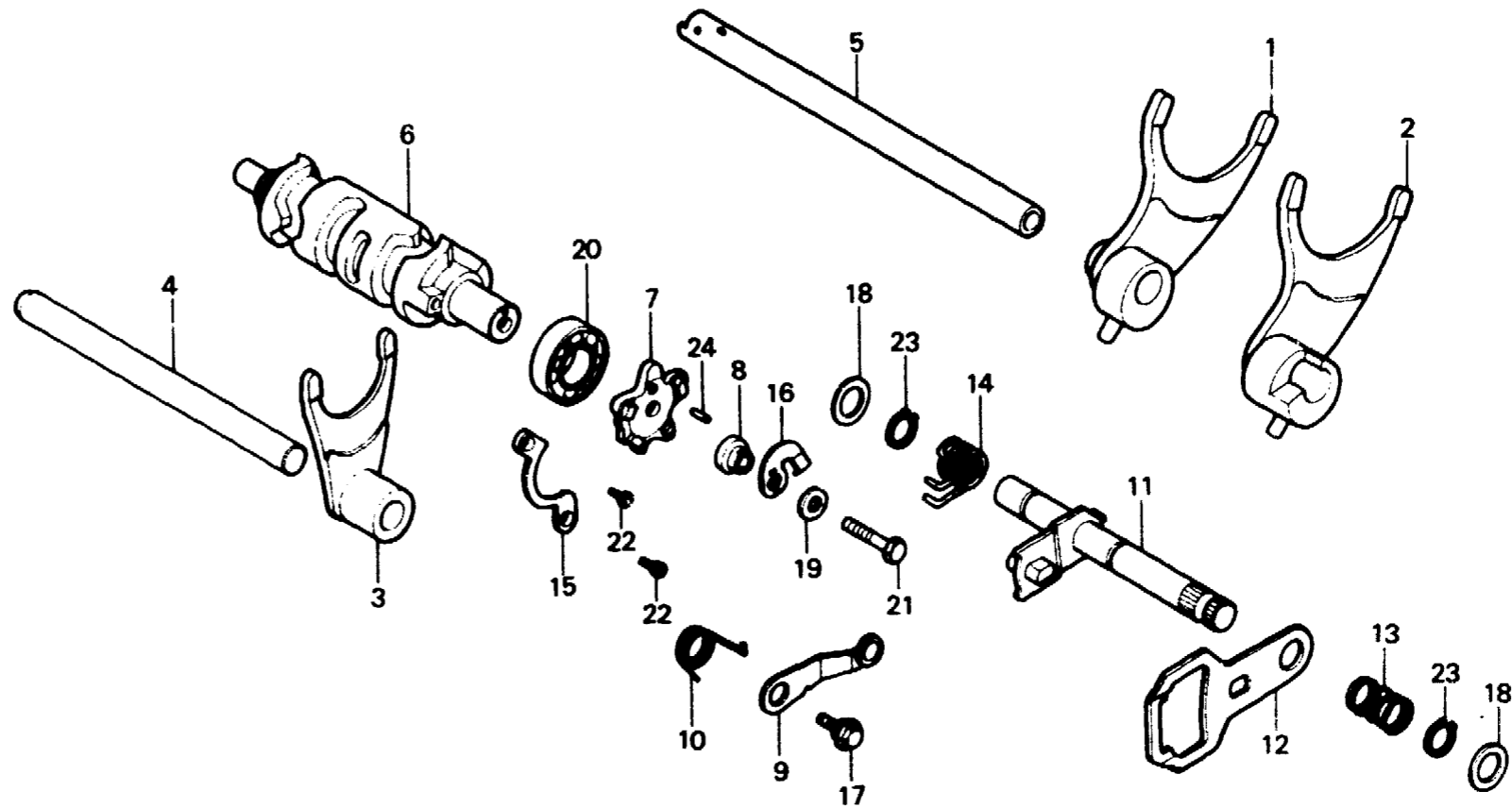
E-13

**Gearshift drum
(XL250S·SZ·SA·SB)**

**Tambour de changement de vitesse
(XL250S·SZ·SA·SB)**

**Gangschaltwalze
(XL250S·SZ·SA·SB)**

**Tambor de cambio
(XL250S·SZ·SA·SB)**



B428-14

Service item	F.R.T.	Ref. No.	Part No.	Description	Reqd. No. XL250					Serial No.	Area code	
					S	Sz	SA	Sb	Rc			
FORK, GEARSHIFT	*3.3	1	24211-428-000	FORK, R. GEARSHIFT	1	1	1	1				
INC. RELATIVE PART		2	24212-428-000	FORK, L. GEARSHIFT	1	1	1	1				
DRUM, GEARSHIFT	*3.4	3	24213-428-000	FORK, CENTER GEARSHIFT	1	1	1	1				
INC. RELATIVE PART		4	24241-399-000	SHAFT, GEARSHIFT FORK GUIDE	1	1	1	1				
CAM, GEARSHIFT	0.8	5	24265-428-000	MAINSHAFT COMP., GEARSHIFT	1						CM	
STOPPER COMP., GEARSHIFT DRUM	0.7			FORK	1					5018295	DK,DM,E,ED,F,G,SA,SW U	
SPINDLE COMP., GEARSHIFT						1				5106747		
INC. RELATIVE PART			24265-428-010	MAINSHAFT COMP., GEARSHIFT	1					5018296	5022393	DK,DM,E,ED,F,G,SA,SW U
				FORK						5106748		
			24265-429-000	MAINSHAFT CLMP., GEARSHIFT	1					5022394	5023225	DK,DM,E,ED,F,G,SA,SW U
				FORK								B,DK,DM,E,ED,F1,F2,G1 G2,SA,SD,SW,U

1982.01.10

E

F3

F 4

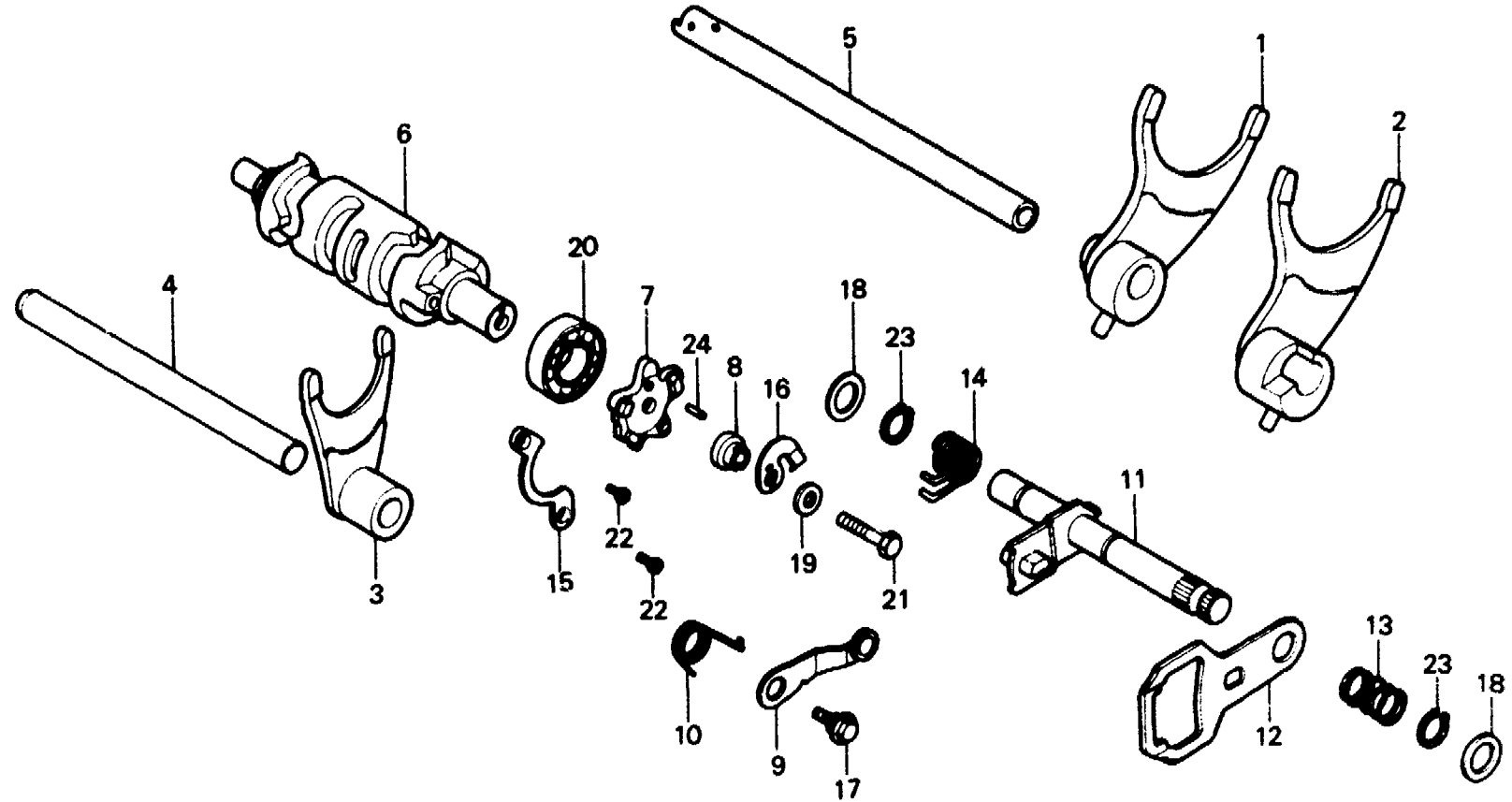
E-13

**Gearshift drum
(XL250S·SZ·SA·SB)**

**Tambour de changement de vitesse
(XL250S·SZ·SA·SB)**

**Gangschaltwalze
(XL250S·SZ·SA·SB)**

**Tambor de cambio
(XL250S·SZ·SA·SB)**



B428-14

Service item	F.R.T.	Ref. No.	Part No.	Description	Reqd. No. XL250					Serial No.	Area code
					S	Sz	SA	Sb	Rc		
			24265-429-010	MAINSHAFT COMP., GEARSHIFT FORK	1					5023226	DK,DM,E,ED,F,G,SA,SW U
		6	24301-428-000	DRUM, GEARSHIFT	1	1				5205901	B,CM,DK,DM,E,ED,F1,G2 SA,SW,U
											F2,SD
			24301-471-000	DRUM, GEARSHIFT						6000500	G1
										5205902	B,CM,DK,DM,E,ED,F1,G2 SA,SW,U
										6000501	G1
		7	24411-428-000	CAM, GEARSHIFT	1	1					CM
			24411-428-770	CAM, GEARSHIFT			1	1			CM
			24411-428-000	CAM, GEARSHIFT	1		1	1			B,DK,DM,E,ED,F,F1,F2 G,G1,G2,SA,SD,SW,U
											CM
		8	24412-428-000	COLLAR, GEARSHIFT CAM	1	1	1	1			



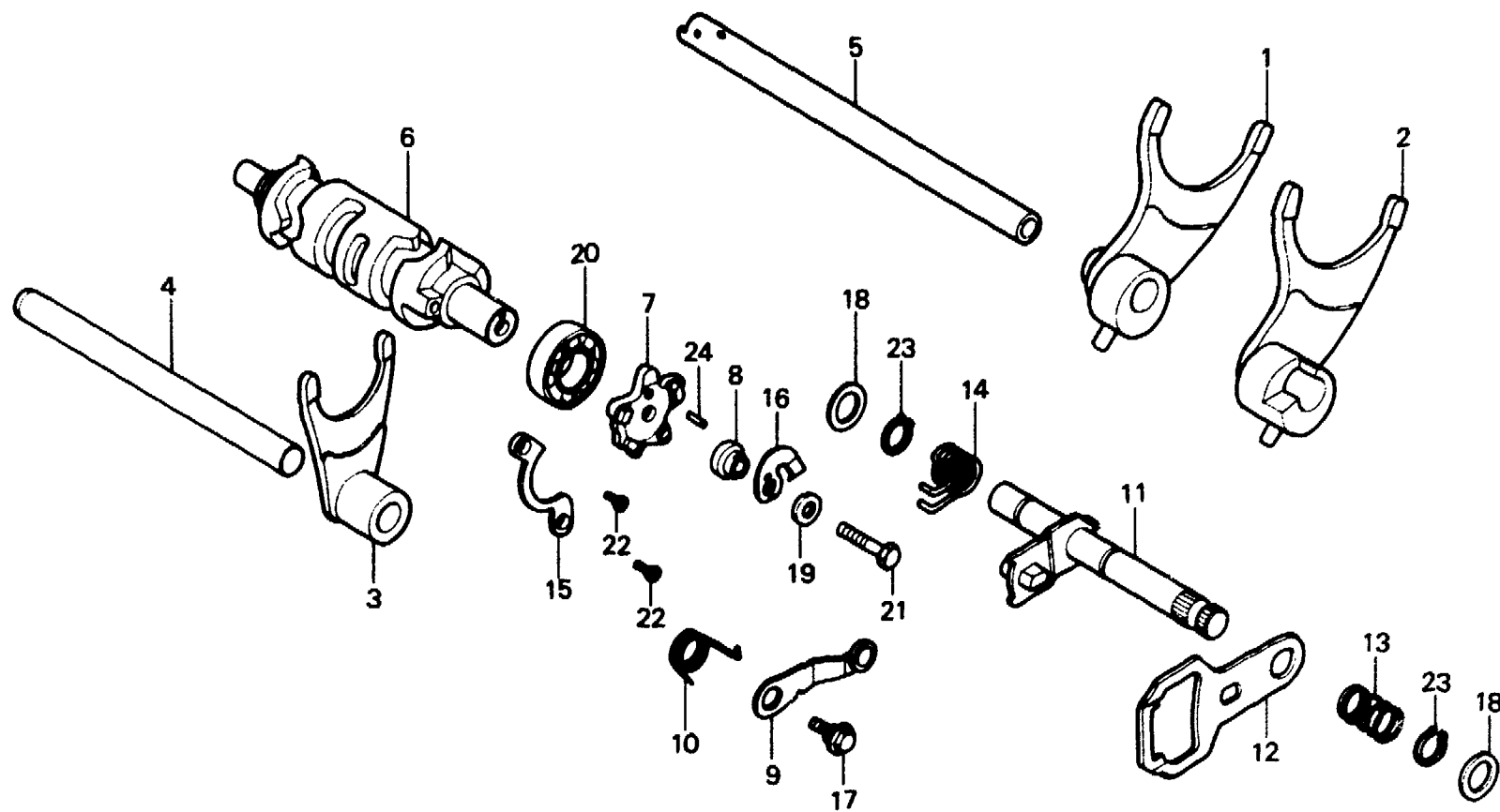
E-13

Gearshift drum
(XL250S·SZ·SA·SB)

Tambour d'engagement de vitesse
(XL250S·SZ·SA·SB)

Gangschaltwalze
(XL250S·SZ·SA·SB)

Tambor de cambio
(XL250S·SZ·SA·SB)



B428-14

Service item	F.R.T.	Ref. No.	Part No.	Description	Reqd. No.				Serial No.	Area code
					S	Sz	SA	Sb		
		9	24430-428-000	STOPPER COMP., GEARSHIFT DRUM	1	1	1	1		
		10	24435-428-000	SPRING, SHIFT DRUM STOPPER	1	1	1	1		
		11	24610-428-000	SPINDLE COMP., GEARSHIFT	1	1	1	1		
		12	24621-107-760	PLATE, GEARSHIFT	1	1	1	1		
		13	24631-362-000	SPRING, GEARSHIFT PLATE	1	1	1	1		
		14	24651-428-000	SPRING, GEARSHIFT RETURN	1	1	1	1		
		15	24710-362-000	PLATE, BEARING SETTING	1	1	1	1		
		16	35753-428-000	ROTOR, NEUTRAL SWITCH	1	1	1	1		
		17	90023-041-000	BOLT, GEARSHIFT DRUM STOPPER ARM PIVOT	1	1	1	1		

F 6

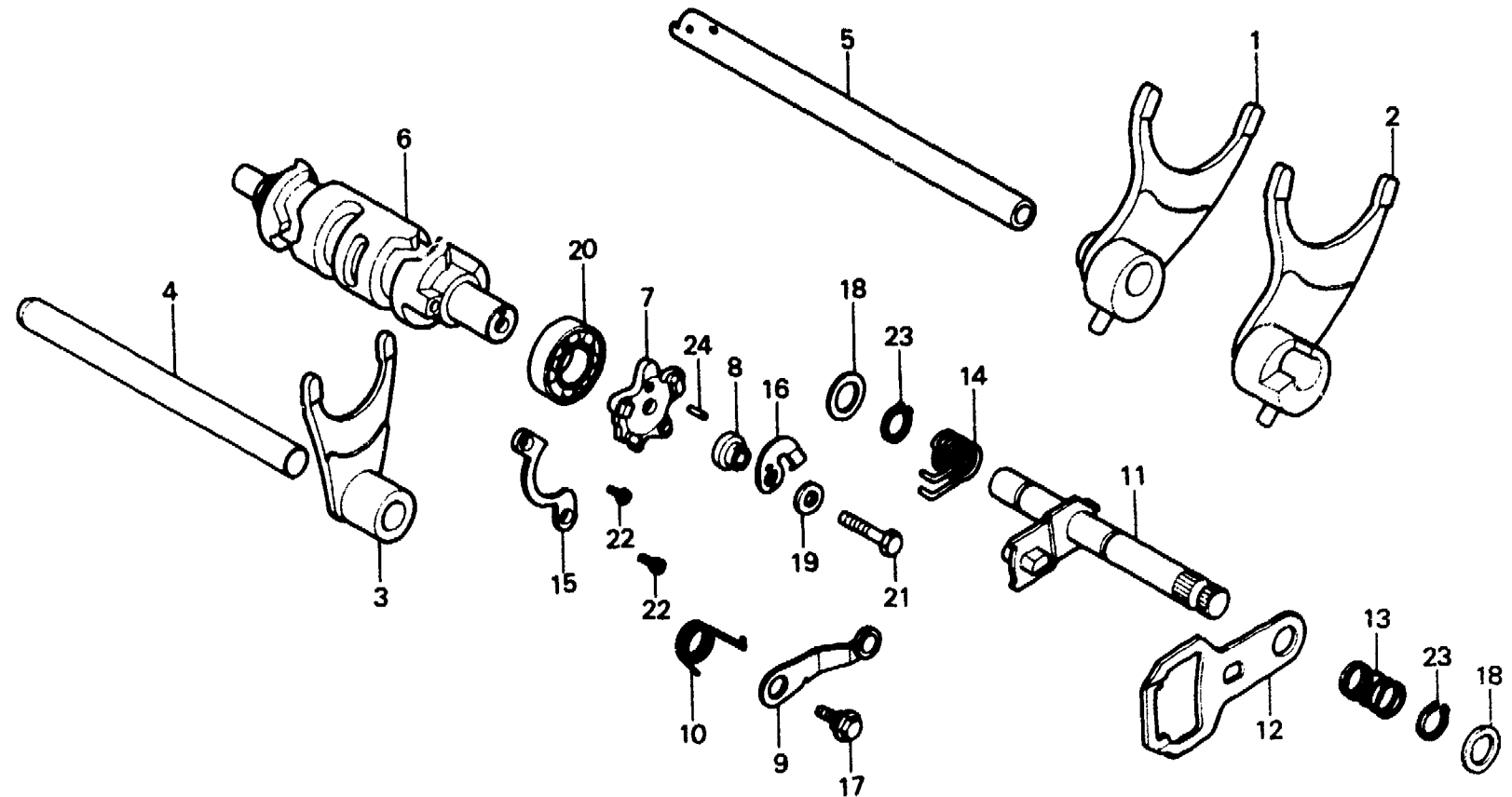
E-13

**Gearshift drum
(XL250S·SZ·SA·SB)**

**Tambour de changement de vitesse
(XL250S·SZ·SA·SB)**

**Gangschaltwalze
(XL250S·SZ·SA·SB)**

**Tambor de cambio
(XL250S·SZ·SA·SB)**



B428-14

Service item	F.R.T.	Ref. No.	Part No.	Description	Reqd. No.					Serial No.	Area code
					S	Sz	SA	Sb	Rc		
		18	90452-500-000	WASHER, CHAIN GUIDE ROLLER	2	2	2	2			
		19	90486-028-000	WASHER, SPARK ADVANCER SETTING	1	1	1	1			
		20	91008-362-000	BEARING, RADIAL BALL, 16003	1	1	1	1			
		21	92200-06028	BOLT, HEX., 6X28	1	1	1	1			
		22	93600-06012	SCREW, FLAT, 6X12	2	2	2	2			
		23	94510-12000	CIRCLIP, EXTERNAL, 12	2	2	2	2			
		24	96220-30085	ROLLER, 3X8.5	1	1	1	1			

1982.01.10

E

F6



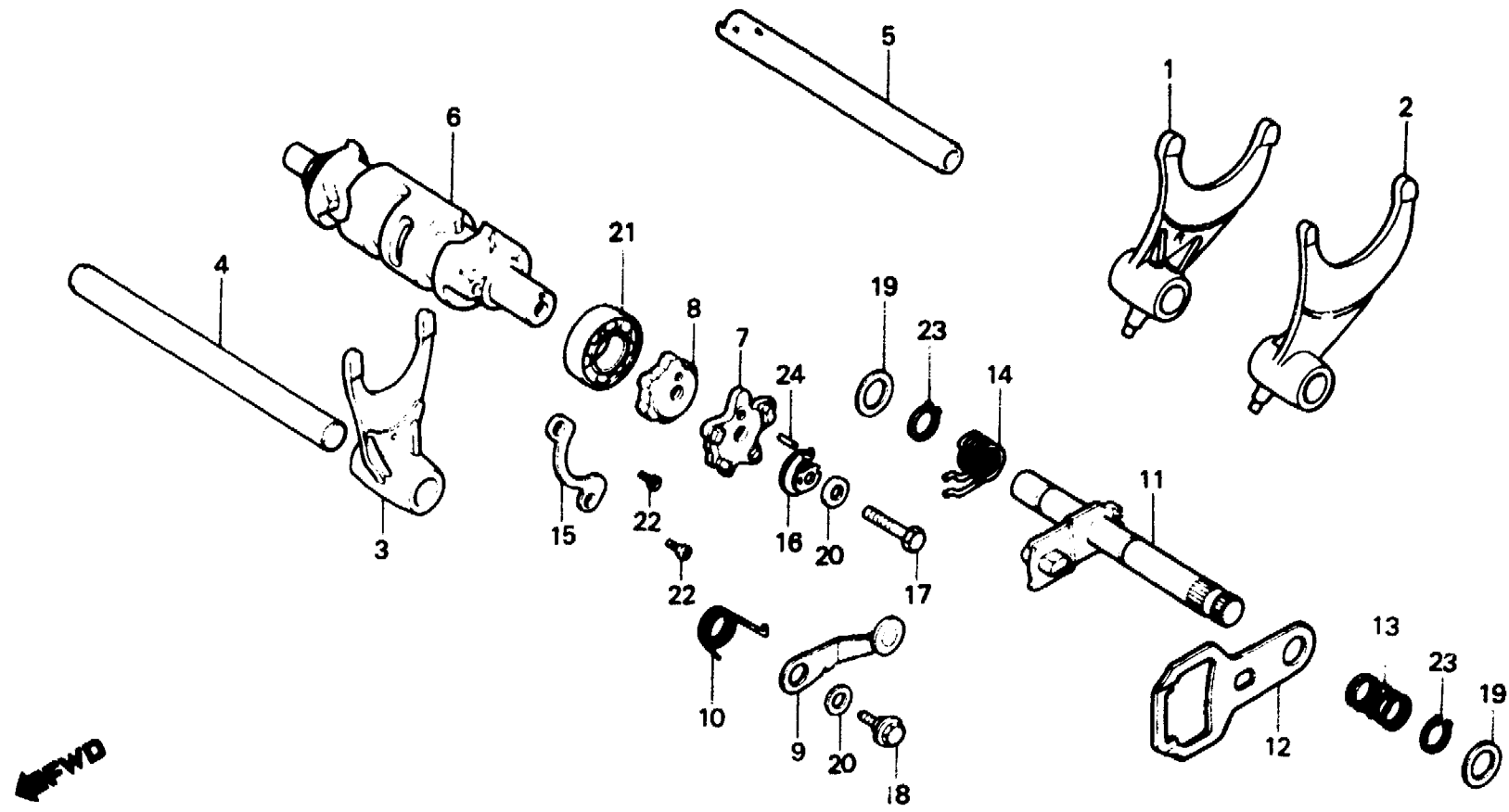
E-13-1

**Gearshift drum
(XL250Rc)**

**Tambour de changement de vitesse
(XL250Rc)**

**Gangschaltwalze
(XL250Rc)**

**Tambor de cambio
(XL250Rc)**



BMA0-12C

Service item	F.R.T.	Ref. No.	Part No.	Description	Reqd. No.				Serial No.	Area code
					S	Sz	SA	Sb		
FORK, GEARSHIFT	*3.3	1	24211-KB7-000	FORK, R. GEARSHIFT					1	
INC. RELATIVE PART		2	24212-KB7-000	FORK, L. GEARSHIFT					1	
DRUM, GEARSHIFT	*3.4	3	24213-KB7-000	FORK, CENTER GEARSHIFT					1	
CAM, GEARSHIFT	0.8	4	24241-399-000	SHAFT, GEARSHIFT FORK GUIDE					1	
STOPPER COMP., GEARSHIFT DRUM	0.7	5	24265-429-020	MAINSHAFT COMP., GEARSHIFT FORK					1	
SPINDLE COMP., GEARSHIFT										
INC. RELATIVE PART		6	24301-KB7-000	DRUM, GEARSHIFT					1	
		7	24411-KA6-000	CAM, GEARSHIFT					1	
		8	24413-KA6-003	ROTOR, POSITIVE STOPPER					1	
		9	24430-KA6-000	STOPPER COMP., GEARSHIFT DRUM					1	
		10	24435-428-000	SPRING, SHIFT DRUM STOPPER					1	



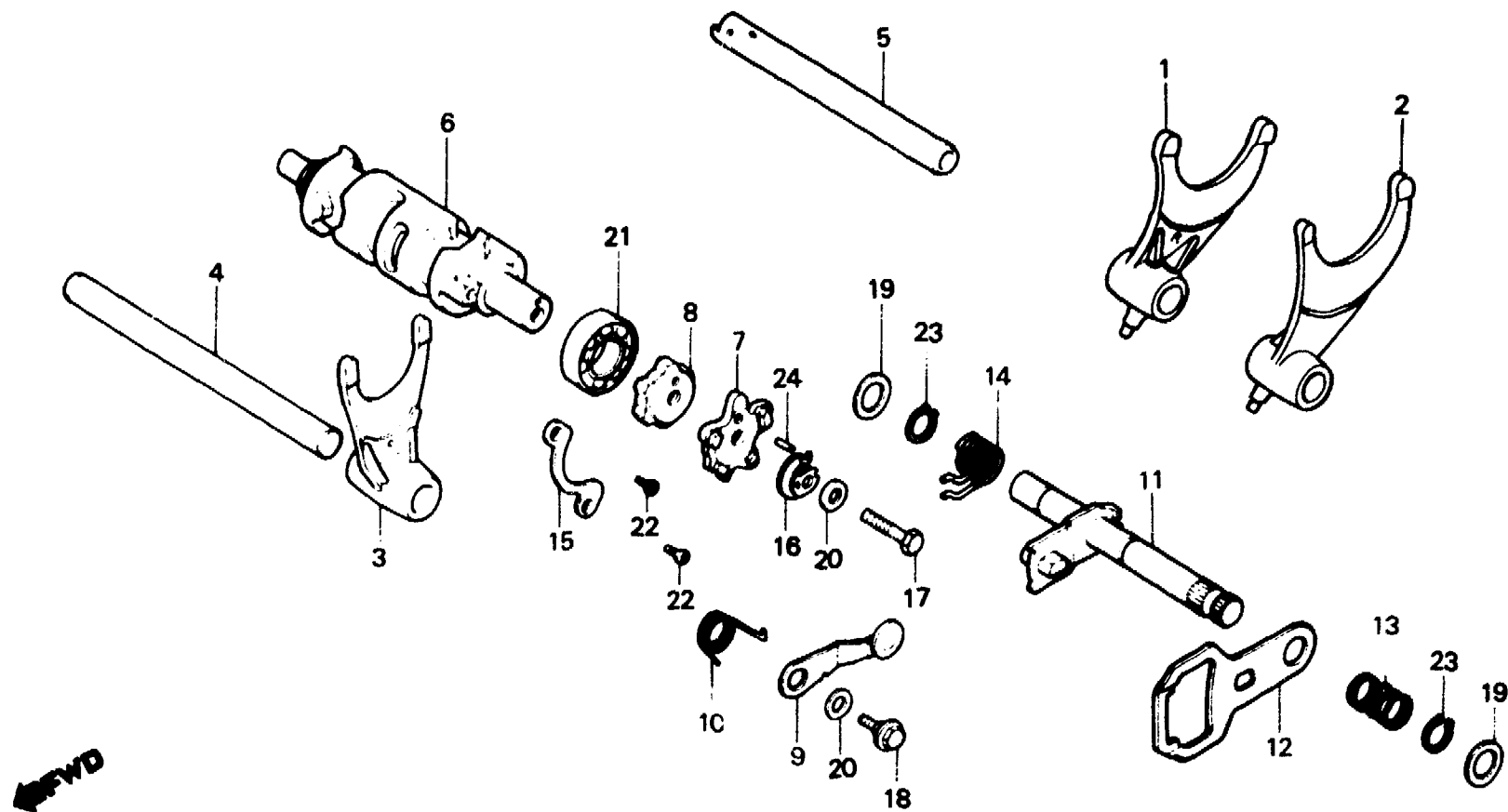
E-13-1

Gearshift drum
(XL250Rc)

Tambour de changement de vitesse
(XL250Rc)

Gangschaltwalze
(XL250Rc)

Tambor de cambio
(XL250Rc)



BMA0-12C

Service item	F.R.T.	Ref. No.	Part No.	Description	Reqd. No.					Serial No.	Area code
					S	Sz	SA	Se	Rc		
		11	24610-KA6-000	SPINDLE COMP., GEARSHIFT					1		
		12	24621-KB7-000	PLATE, GEARSHIFT					1		
		13	24631-362-000	SPRING, GEARSHIFT PLATE					1		
		14	24651-473-000	SPRING, GEARSHIFT RETURN					1		
		15	24710-362-000	PLATE, BEARING SETTING					1		
		16	35753-473-000	ROTOR, NEUTRAL SWITCH					1		
		17	90011-KA6-000	BOLT, HEX., 6X30					1		
		18	90023-041-000	BOLT, GEARSHIFT DRUM STOPPER ARM PIVOT					1		
		19	90452-500-000	WASHER, CHAIN GUIDE ROLLER THRUST					2		
		20	90486-028-000	WASHER, SPARK ADVANCER SETTING					2		

1982.01.10

E

F8



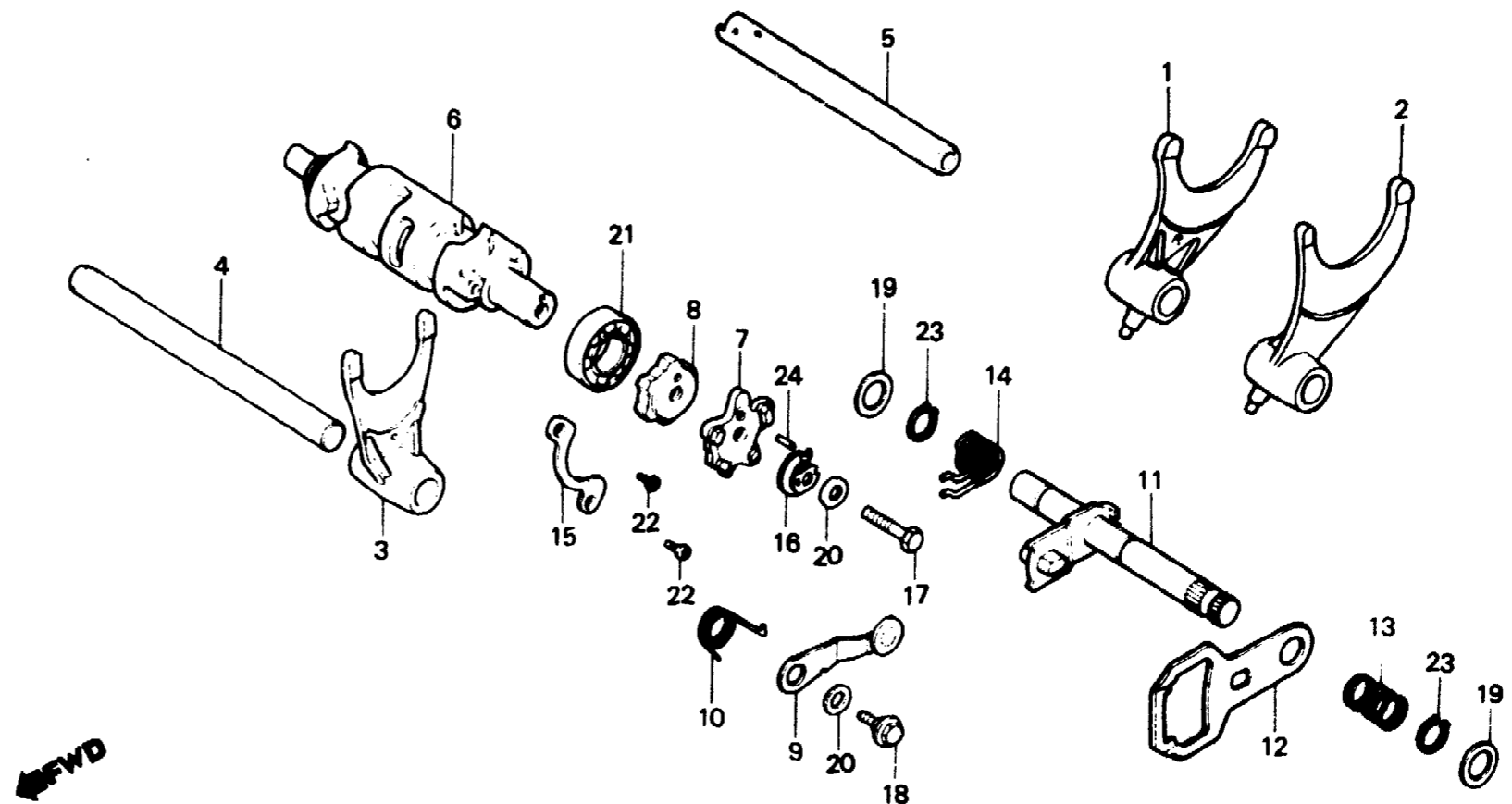
E-13-1

**Gearshift drum
(XL250Rc)**

**Tambour de changement de vitesse
(XL250Rc)**

**Gangschaltwalze
(XL250Rc)**

**Tambor de cambio
(XL250Rc)**



BMA0-12C

Service item	F.R.T.	Ref. No.	Part No.	Description	Reqd. No.					Serial No.	Area code
					S	Sz	SA	Sa	Rc		
		21	91008-362-000	BEARING, RADIAL BALL, 16003						1	
		22	93600-06012	SCREW, FLAT, 6X12						2	
		23	94510-12000	CIRCLIP, EXTERNAL, 12						2	
		24	96220-30085	ROLLER, 3X8.5						1	

F 10

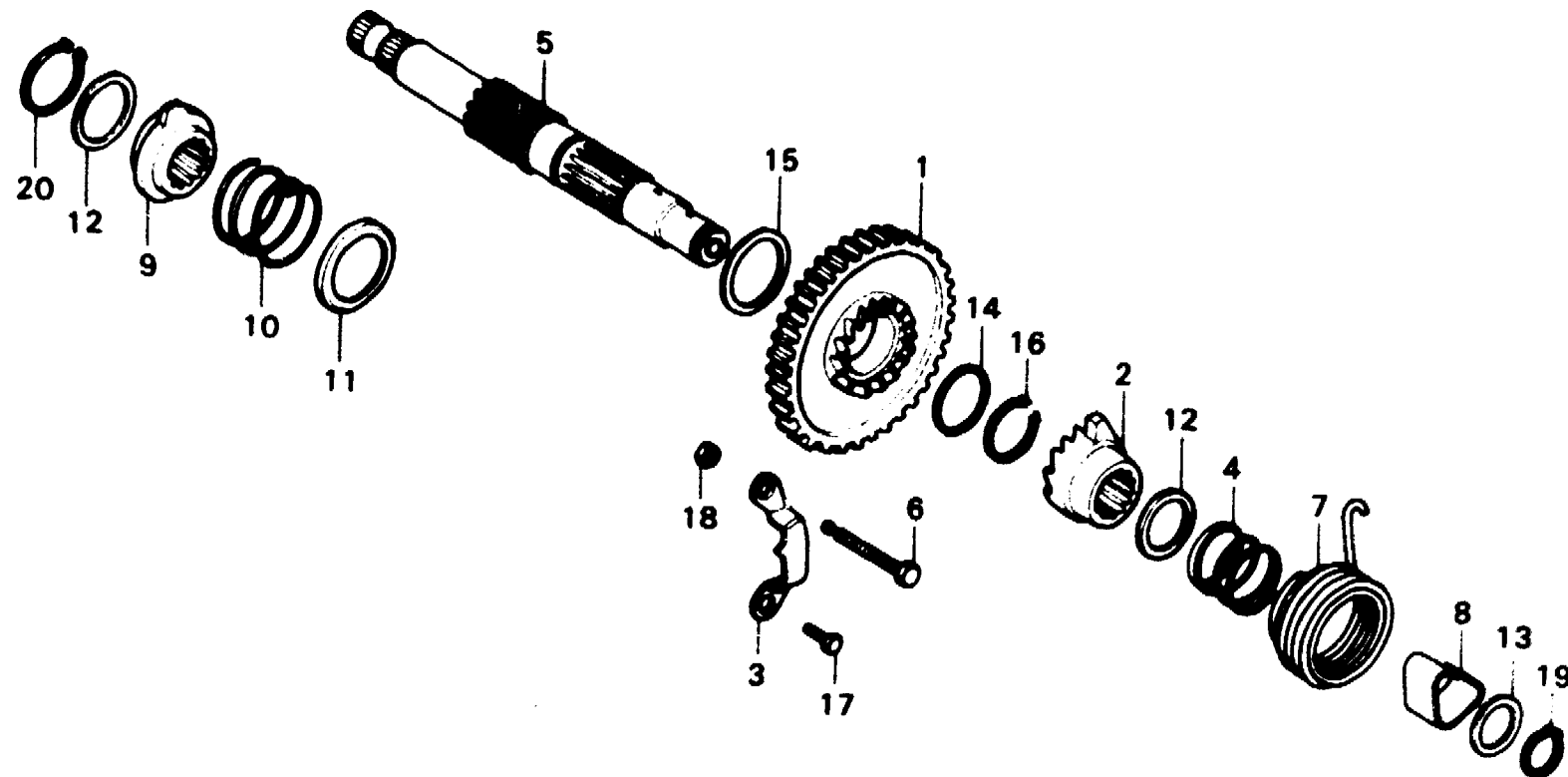
E-14

Kick starter spindle

Broche de kick de démarrage

Kickstarterspindel

Eje de arranque de pie



B428-15

Service item	F.R.T.	Ref. No.	Part No.	Description	Reqd. No. XL250					Serial No.	Area code
					S	Sz	SA	Sa	Rc		
PINION, KICK STARTER RATCHET, KICK STARTER PLATE, KICK STOPPER SPINDLE COMP., KICK STARTER SPRING, KICK STARTER CAM, KICK SHAFT	*3.4	1	28211-428-000	PINION, KICK STARTER (36T)	1						CM
			28211-428-010	PINION, KICK STARTER (36T)	1				5022394	5023225	DK,DM,E,ED,F,G,SA,SW U
	*3.3		28211-428-020	PINION, KICK STARTER (36T)	1	1			5023226		DK,DM,E,ED,F,G,SA,SW U
	0.6		28211-428-030	PINION, KICK STARTER (36T)	1		1		5202599		B,DK,DM,E,ED,F1,F2,G2 SA,SW,U
								1	5202600		CM B,DK,DM,E,ED,F1,F2,G2 SA,SW,U G1,SD B,CM,DK,DM,E,ED,F1,F2 G2,IT,SA,SW,U
		2	28213-428-000	RATCHET, KICK STARTER	1	1	1	1	1		
		3	28215-428-000	PLATE, KICK STOPPER	1	1	1	1	1		
		4	28223-314-000	SPRING, KICK STARTER RATCHET	1	1	1	1	1		

F 11

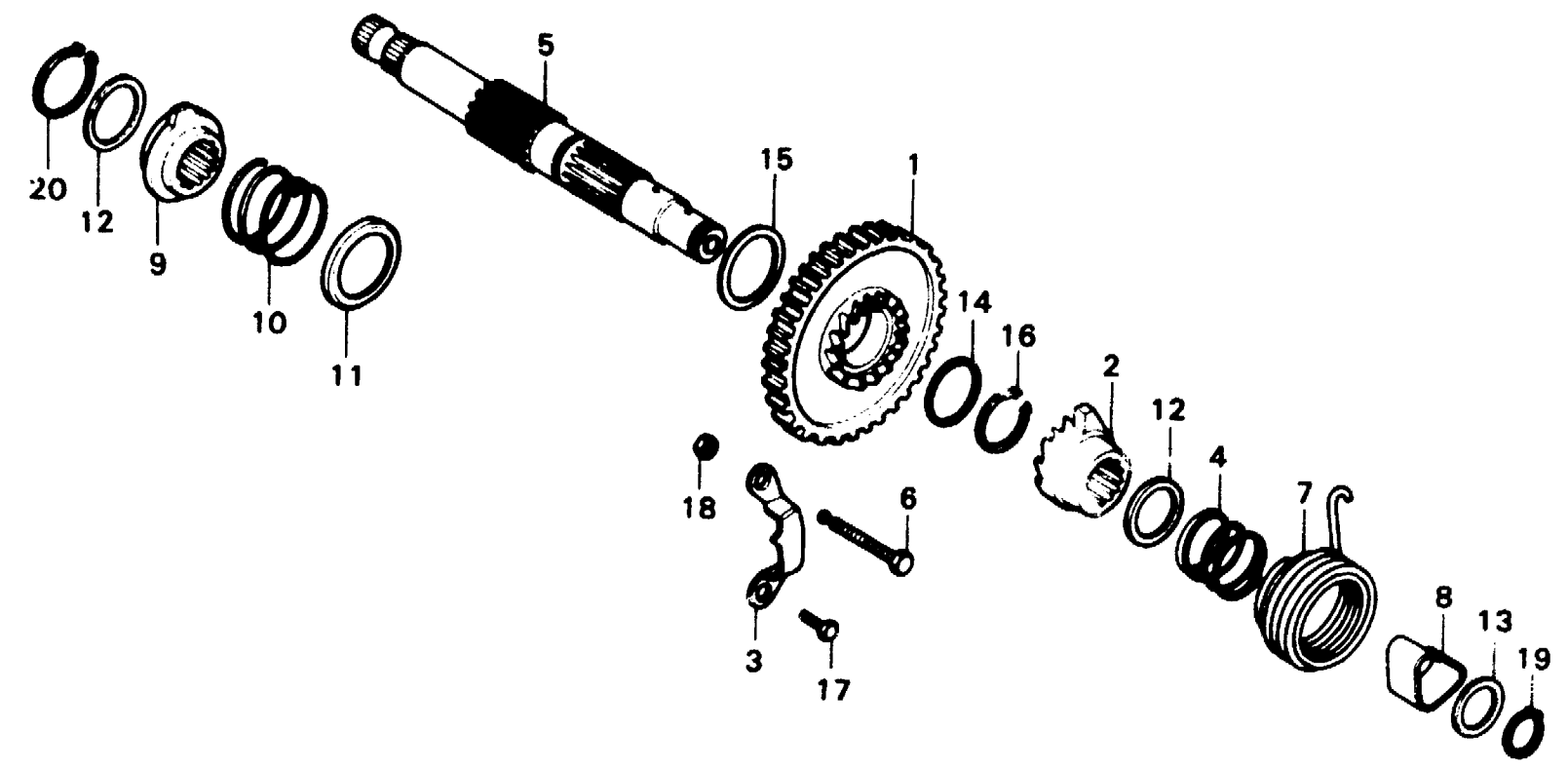
E-14

Kick starter spindle

Broche de kick de démarrage

Kickstarterspindel

Eje de arranque de pie



B428-15

Service item	F.R.T.	Ref. No.	Part No.	Description	Reqd. No.					Serial No.	Area code
					S	Sz	SA	Sb	Rc		
		5	28250-428-000	SPINDLE COMP., KICK STARTER (32T)	1						CM
					1					5023225	DK,DM,E,ED,F,G,SA,SW U
			28250-428-010	SPINDLE COMP., KICK STARTER	1					5023226	DK,DM,E,ED,F,G,SA,SW U
						1					
							1			5200346	B,CM,DK,DM,E,ED,G2,SA SW,U
			28250-428-020	SPINDLE COMP., KICK STARTER			1			5200347	5202599 B,DK,DM,E,ED,G2,SA,SW U
								1		5200347	CM
								1	1		G1
											B,CM,DK,DM,E,ED,F1,F2 G2,SA,SD,SW,U
			28250-428-030	SPINDLE COMP., KICK STARTER			1			5202600	B,DK,DM,E,ED,G2,SA,SW U
								1			SD
									1		B,CM,DK,DM,E,ED,F1,F2 G1,G2,IT,SA,SW,U

1982.01.10

E

F11

F 12

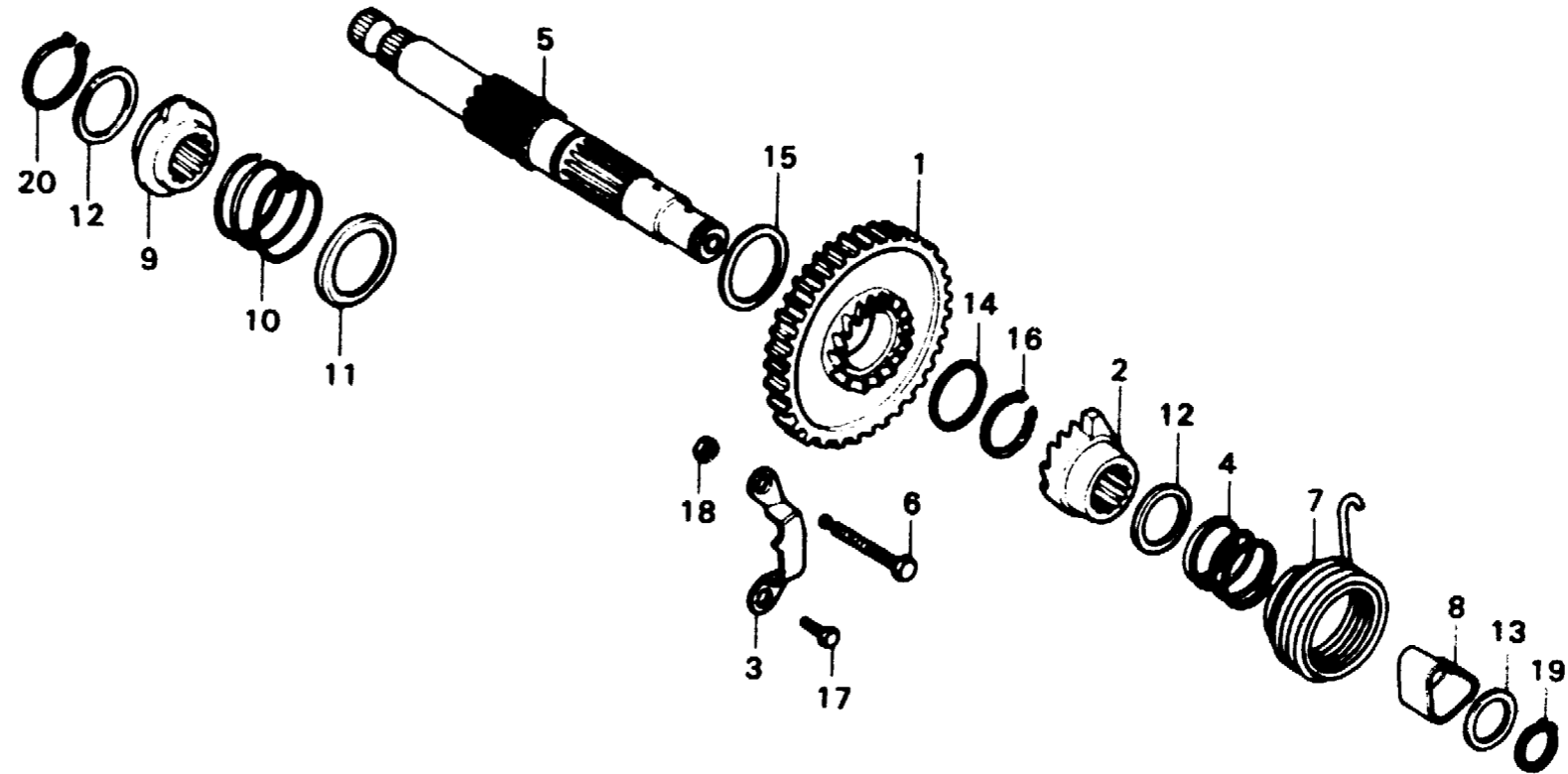
E-14

Kick starter spindle

Broche de kick de démarrage

Kickstarterspindel

Eje de arranque de pie



B428-15

Service item	F.R.T.	Ref. No.	Part No.	Description	Reqd. No.					Serial No.	Area code
					S	Sz	SA	Sb	Rc		
		6	28254-428-000	PIN, KICK SPRING HOOK	1	1	1	1	1		
		7	28261-428-000	SPRING, KICK STARTER	1	1	1	1	1		
		8	28265-428-000	COLLAR, KICK STARTER	1	1	1	1	1		
		9	28272-428-000	CAM, KICK SHAFT	1	1	1	1	1		
		10	28283-428-000	SPRING, CAM RESET	1	1	1	1	1		
		11	28284-428-000	SEAT, CAM RESET SPRING	1	1	1	1	1		
		12	90452-701-000	WASHER, THRUST, 18MM	2	2	2	2	2		
		13	90453-235-000	WASHER, THRUST, 16MM	1	1	1	1	1		
		14	90453-428-000	WASHER, THRUST, 22MM	1	1	1	1	1		
		15	90456-323-000	WASHER, THRUST, 22MM	1	1	1	1	1		
		16	90601-329-000	CIRCLIP, 22MM	1	1	1	1	1		
		17	92000-06016	BOLT, HEX., 6X16	1	1	1	1	1		
		18	94002-08000-0S	NUT, HEX., 8MM	1	1	1	1	1		
		19	94510-16000	CIRCLIP, EXTERNAL, 16	1	1	1	1	1		
		20	94510-24000	CIRCLIP, EXTERNAL, 24	1	1	1	1	1		

1982.01.10

E

F12

F 13

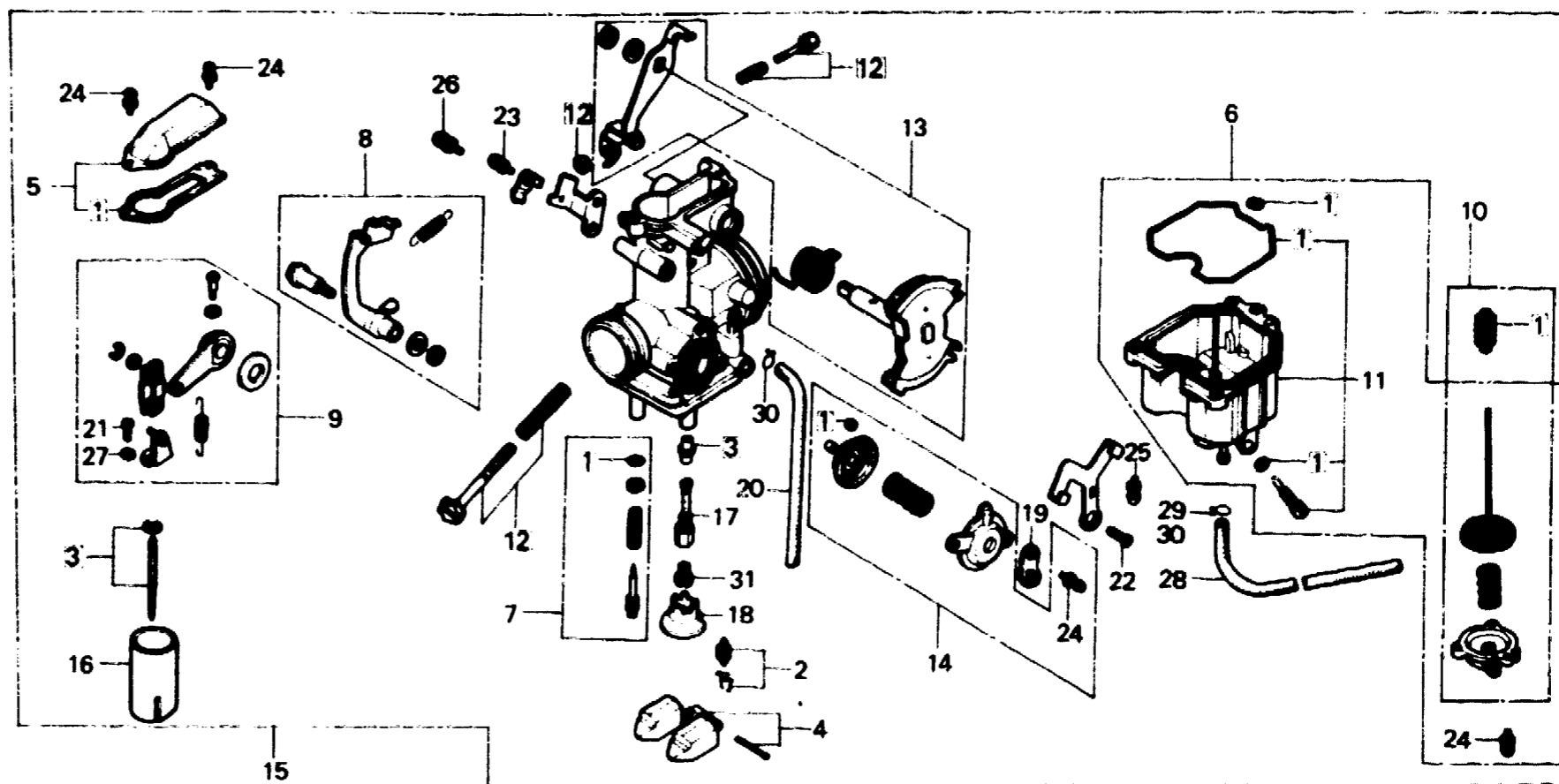
E-15

**Carburetor
(XL250S, Sz, SA, SB-CM)**

**Carburateur
(XL250S, Sz, SA, SB-CM)**

**Vergaser
(XL250S, Sz, SA, SB-CM)**

**Carburador
(XL250S, Sz, SA, SB-CM)**



B428-16A

Service item	F.R.T.	Ref. No.	Part No.	Description	Reqd No XL250					Serial No.	Area code
					S	Sz	SA	Sa	Rc		
GASKET SET	1.0	1	16010-428-671	GASKET SET	1	1	1	1		CM	
VALVE SET, FLOAT	0.6	2	16011-393-004	VALVE SET, FLOAT	1	1				CM	
FLOAT SET			16011-382-004	VALVE SET, FLOAT			1	1		CM	
ARM SET, LINK		3	16012-428-671	NEEDLE SET, JET	1	1				CM	
LINK SET, THROTTLE			16012-428-771	NEEDLE SET, JET			1	1		CM	
HOLDER, NEEDLE JET		4	16013-393-004	FLOAT SET	1	1	1	1		CM	
JET, MAIN		5	16014-385-680	TOP SET	1	1	1	1		CM	
NEEDLE SET, JET	0.8										
VALVE, THROTTLE		6	16015-428-671	CHAMBER SET, FLOAT	1	1				CM	
TOP SET	0.2	7	16016-410-601	SCREW SET A	1	1				CM	
CHAMBER SET, FLOAT	0.3		16016-413-751	SCREW SET A			1		PD10A B	CM	
DIAPHRAGM SET, PUMP	0.5		16016-385-681	SCREW SET A			1		PD10B A	CM	
CARBURETOR ASSY.										CM	
VALVE SET, AIR CUT	0.1	8	16017-428-671	LINK SET	1	1				CM	
		9	16018-428-671	ARM SET, LINK	1	1	1	1		CM	
		10	16021-428-671	DIAPHRAGM SET, PUMP	1	1				CM	
			16021-428-771	DIAPHRAGM SET, PUMP			1	1		CM	
		11	16023-426-003	CHAMBER SET B, FLOAT			1	1		CM	
		12	16028-428-671	SCREW SET B	1	1				CM	
							1		PD10B A	CM	

F 14

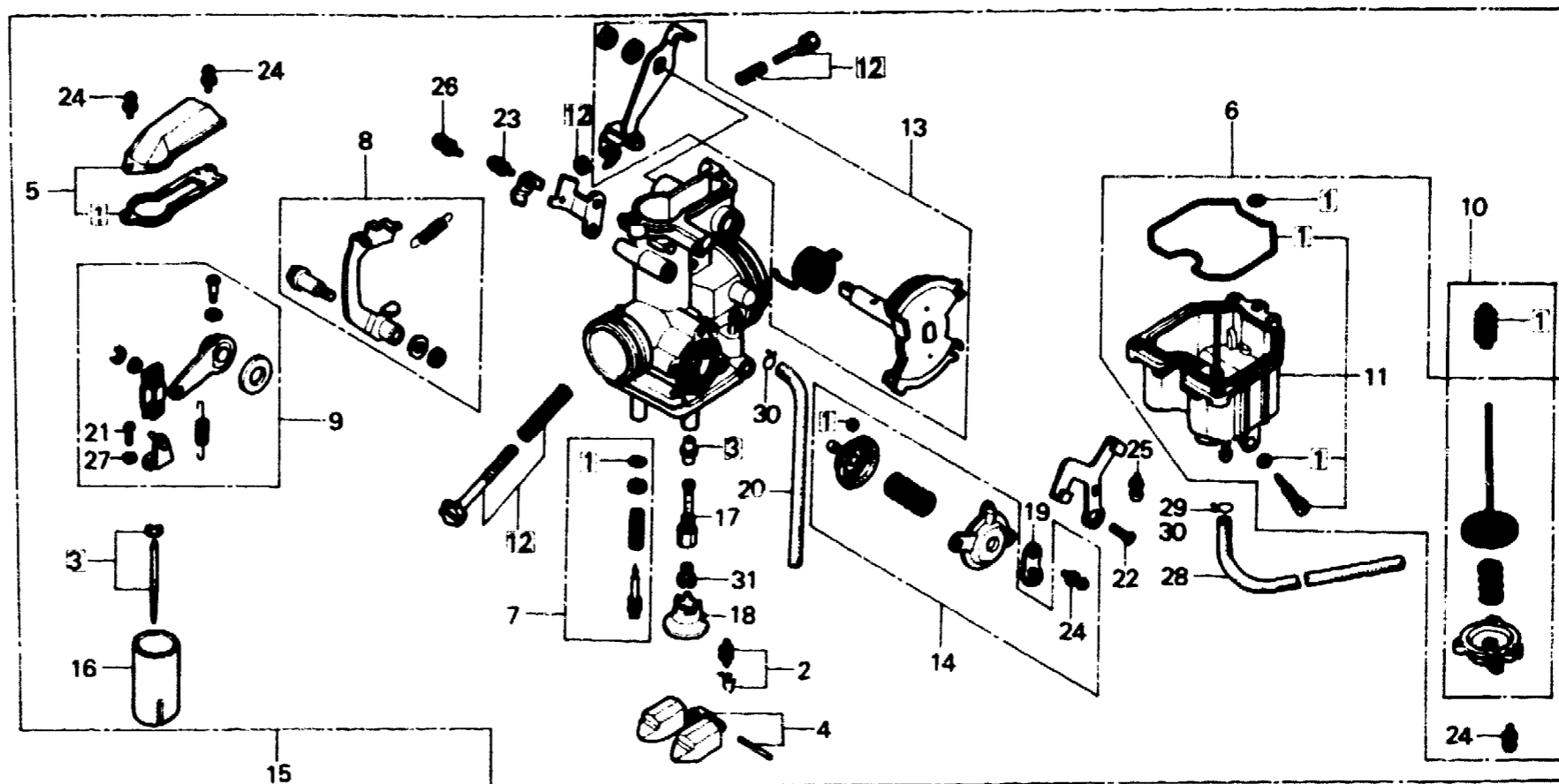
E-15

**Carburetor
(XL250S,Sz,SA,SB-CM)**

**Carburateur
(XL250S,Sz,SA,SB-CM)**

**Vergaser
(XL250S,Sz,SA,SB-CM)**

**Carburador
(XL250S,Sz,SA,SB-CM)**



B428-16A

Service item	F.R.T.	Ref. No.	Part No.	Description	Reqd. No.					Serial No.	Area code	
					S	Sz	SA	Sb	Rc			
			16028-428-771	SCREW SET B					1	PD10B [B]	CM	
		13	16032-428-671	LINK SET, THROTTLE	1	1	1	1			CM	
		14	16048-413-004	VALVE SET, AIR CUT	1	1					CM	
			16048-429-771	VALVE SET, AIR CUT			1	1			CM	
		15	16100-428-671	CARBURETOR ASSY.	1	1					CM	
			16100-428-771	CARBURETOR ASSY.					1	5202034	CM	
			16100-428-772	CARBURETOR ASSY.					1	5202035	CM	
			16100-428-721	CARBURETOR ASSY.					1	5202461	CM	
			16100-428-722	CARBURETOR ASSY.					1	5204696	CM	
											1	CM
		16	16111-428-671	VALVE, THROTTLE	1	1	1	1			CM	
		17	16165-428-671	HOLDER, NEEDLE JET	1	1					CM	
			16165-428-771	HOLDER, NEEDLE JET			1	1			CM	
		18	16168-382-014	HOLDER, JET	1	1	1	1			CM	
		19	16179-428-671	BINDER	1	1					CM	
		20	16199-428-671	PIPE, AIR VENT	1	1					CM	
			16199-428-771	TUBE, FUEL					1	1	CM	

F 15

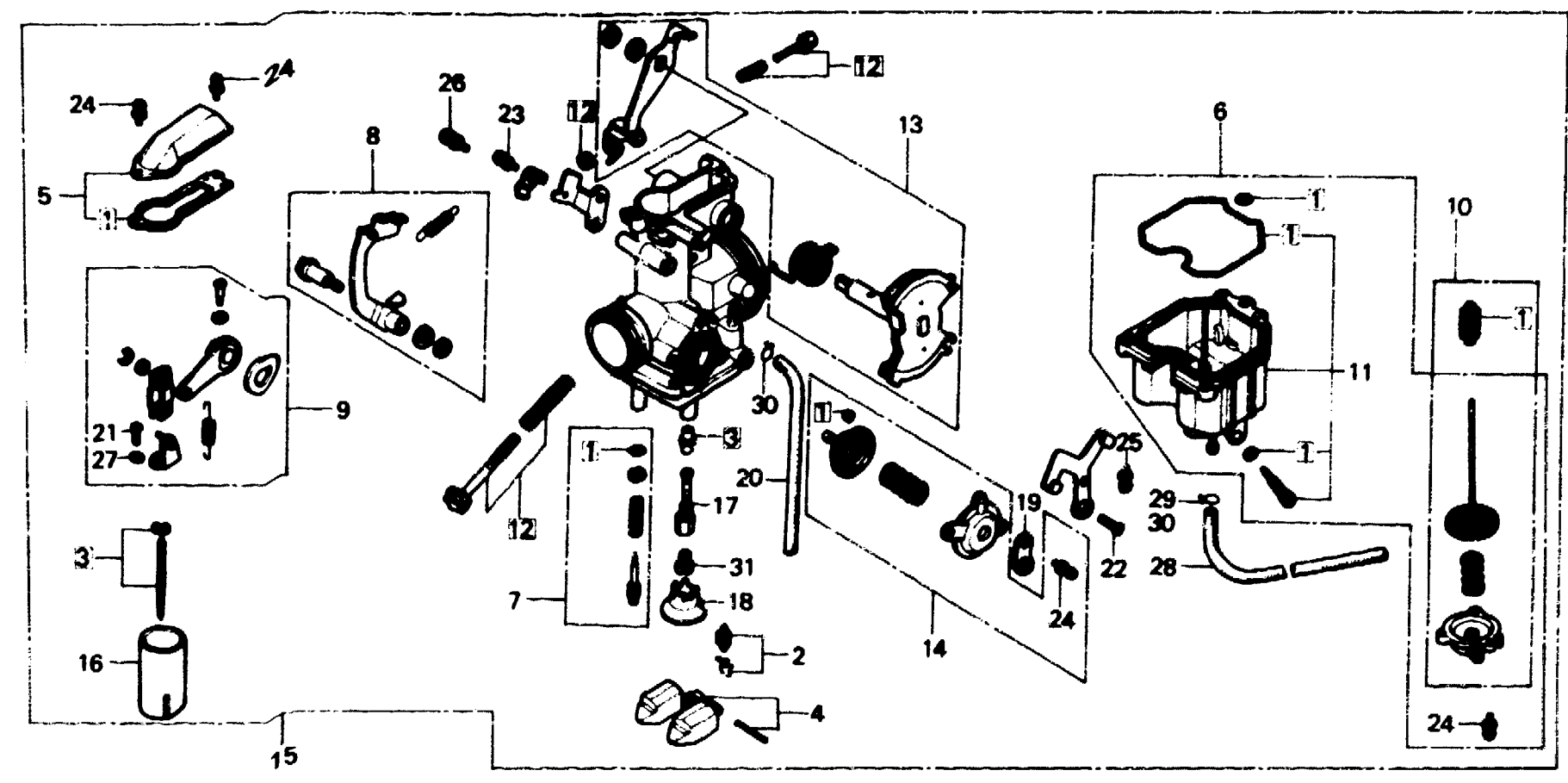
E-15

**Carburetor
(XL250S, Sz, SA, SB-CM)**

**Carburateur
(XL250S, Sz, SA, SB-CM)**

**Vergaser
(XL250S, Sz, SA, SB-CM)**

**Carburador
(XL250S, Sz, SA, SB-CM)**



B428-16A

Service item	F.R.T.	Ref. No.	Part No.	Description	Reqd. No.				Serial No.	Area code
					S	Sz	SA	Sa		
		21	93500-03008-0H	SCREW, PAN, 3X8	2	2	2	2		CM
		22	93600-05010-0H	SCREW, FLAT, 5X10	1	1	1	1		CM
		23	93892-04008-0B	SCREW-WASHER, 4X8	1	1	1	1		CM
		24	93892-04012-0B	SCREW-WASHER, 4X12	7	7	7	7		CM
		25	93892-04016-0B	SCREW-WASHER, 4X16	3	3	3	3		CM
		26	93892-05016-0B	SCREW-WASHER, 5X16	1	1				CM
			93892-05010-0B	SCREW-WASHER, 5X10			1	1		CM
		27	94111-03800	WASHER, SPRING, 3MM	2	2	2	2		CM
		28	95001-35360-#0	TUBE, FUEL, 3.5X360	1	1				CM
			16143-413-751	TUBE, FUEL			1	1		CM
		29	95002-02070	CLIP B7, TUBE	1	1				CM
		30	95002-02080	CLIP B8, TUBE	1	1				CM
			95002-02650	CLIP B6.5, TUBE			2		PD10A B	CM
			95002-02070	CLIP B7, TUBE			2		PD10A A	CM
								2		CM
		31	99101-393-1200	JET, MAIN, #120	1	1				CM
			16110-428-670	JET SET, MAIN, #110 (HIGH ALTITUDE TYPE)		(1)				CM

1982.01.10

E

F15

F 16

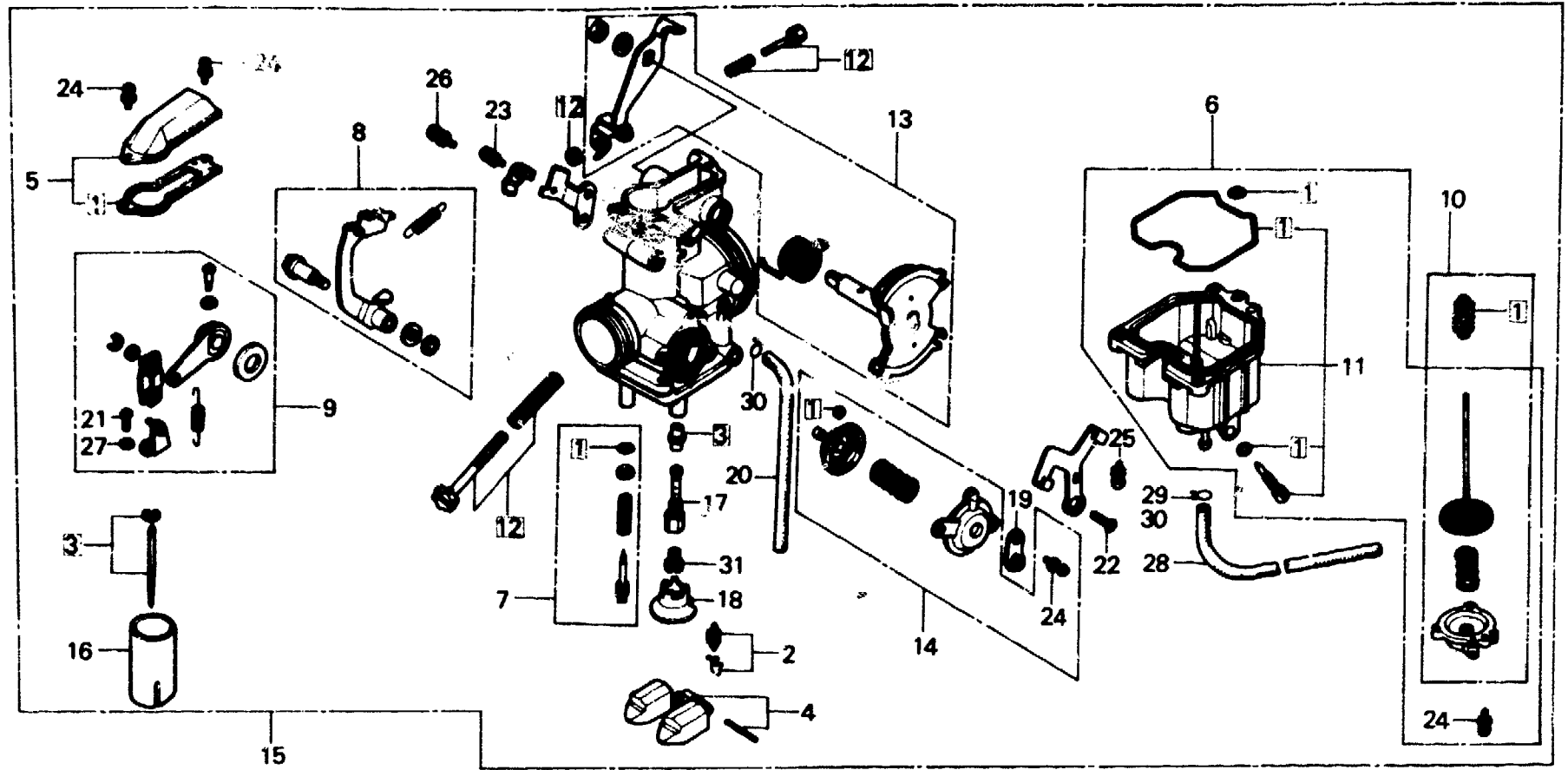
E-15

**Carburetor
(XL250S,Sz,SA,SB-CM)**

**Carburateur
(XL250S,Sz,SA,SB-CM)**

**Vergaser
(XL250S,Sz,SA,SB-CM)**

**Carburador
(XL250S,Sz,SA,SB-CM)**



B428-16A

Service item	F.R.T.	Ref. No.	Part No.	Description	Reqd. No.					Serial No.	Area code
					S	Sz	SA	Sb	Rc		
			16110-428-770	JET SET, MAIN, #110 (HIGH ALTITUDE TYPE)			(1)	(1)			CM
			99101-393-1150	JET, MAIN, #115			1	1			CM

G 1

E-15-1

Carburetor

(XL250S, Sz, SA, Sb-B, DK, DM, E, ED, F, G, G1, G2, SA, SD, SW, U)

Carburateur

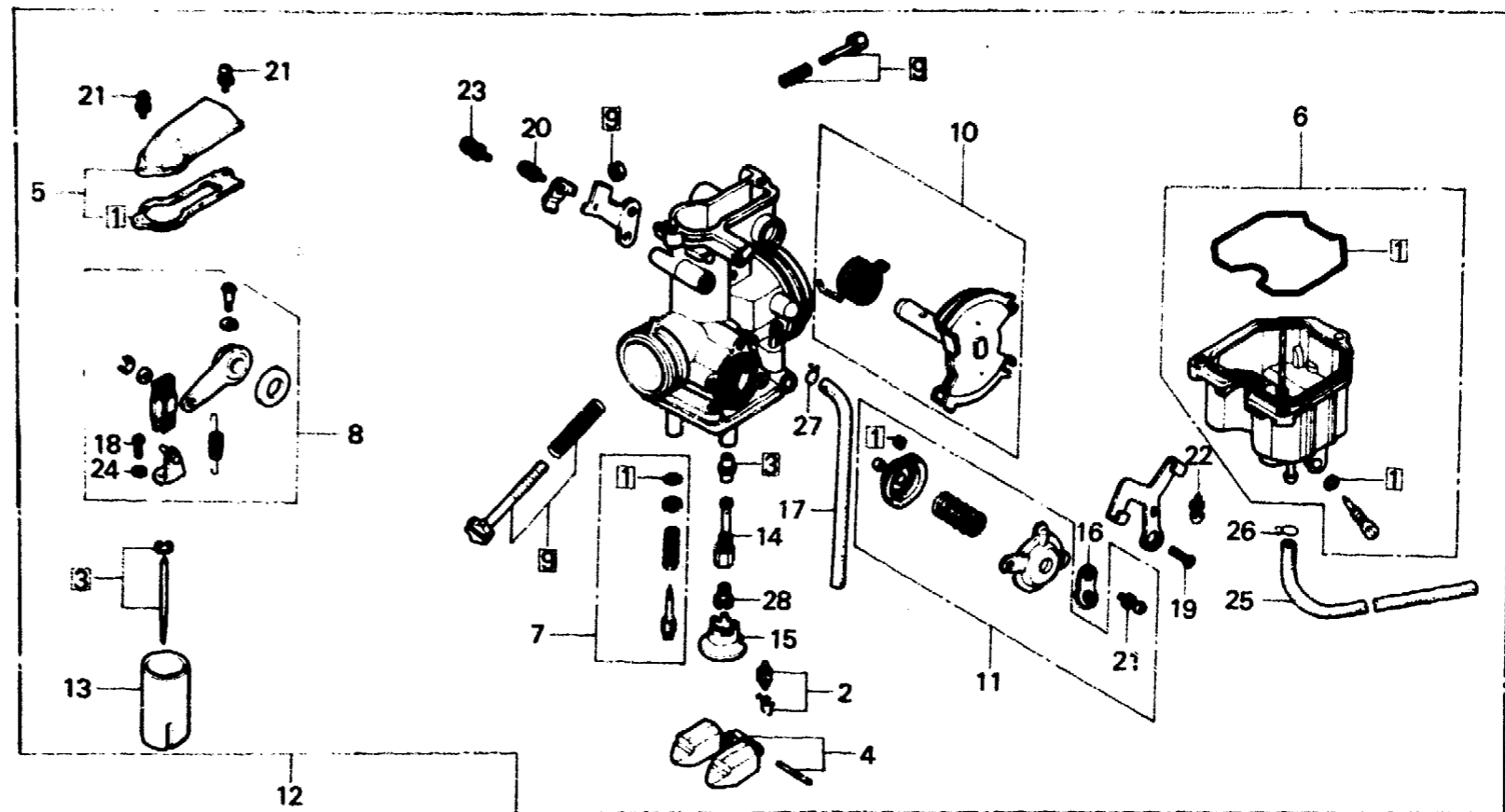
(XL250S, Sz, SA, S, DM, E, ED, F, G, G1, G2, S, SW, U)

Vergaser

(XL250S, Sz, SA, Sb-B, DK, DM, E, ED, F, G, G1, G2, SA, SD, SW, U)

Carburador

(XL250S, Sz, SA, Sb-B, DK, DM, E, ED, F, G, G1, G2, SA, SD, SW, U)



B428-40

Service item	F.R.T.	Ref. No.	Part No.	Description	Reqd. No.					Serial No.	Area code
					S	Sz	SA	Sb	Rc		
GASKET SET	1.0	1	16010-428-004	GASKET SET	1	1	1			B, DK, DM, E, ED, F, F1, F2	
VALVE SET, FLOAT	0.6	2	16011-382-004	VALVE SET, FLOAT			1	1		G, G1, G2, SA, SD, SW, U	
FLOAT SET			16011-393-004	VALVE SET, FLOAT	1		1	1		G1	
ARM SET, LINK			16012-428-004	NEEDLE SET, JET	1		1	1		B, DK, DM, E, ED, F, F1, F2	
LINK SET, THROTTLE										G, G2, SA, SD, SW, U	
HOLDER, NEEDLE JET										B, DK, DM, E, ED, F, F1, F2	
JET, MAIN										G, G1, G2, SA, SD, SW, U	
NEEDLE SET, JET	0.8	4	16013-393-004	FLOAT SET	1		1	1		B, DK, DM, E, ED, F, F1, F2	
VALVE, THROTTLE										G, G1, G2, SA, SD, SW, U	
TOP SET	0.2	5	16014-385-680	TOP SET	1		1	1		B, DK, DM, E, ED, F, F1, F2	
CHAMBER SET, FLOAT	0.3									G, G1, G2, SA, SD, SW, U	
VALVE SET, AIR CUT	0.1									B, DK, DM, E, ED, F, F1, F2	
CARBURETOR ASSY.	0.5	6	16015-428-004	CHAMBER SET, FLOAT	1		1	1		B, DK, DM, E, ED, F, F1, F2	
		7	16016-385-681	SCREW SET A	1		1	1		G, G1, G2, SA, SD, SW, U	
		8	16018-428-004	ARM SET, LINK	1		1	1		B, DK, DM, E, ED, F, F1, F2	
		9	16028-428-004	SCREW SET B	1					G, G1, G2, SA, SD, SW, U	
					1					PD04B A DK, DM, E, ED, F, SA, SW, U	
					1					G	

G 2

E-15-1

Carburetor

(XL25GS, Sz, SA, Sb-B, DK, DM, E, ED, F, G, G1, G2, SA, SD, SW, U)

Carburateur

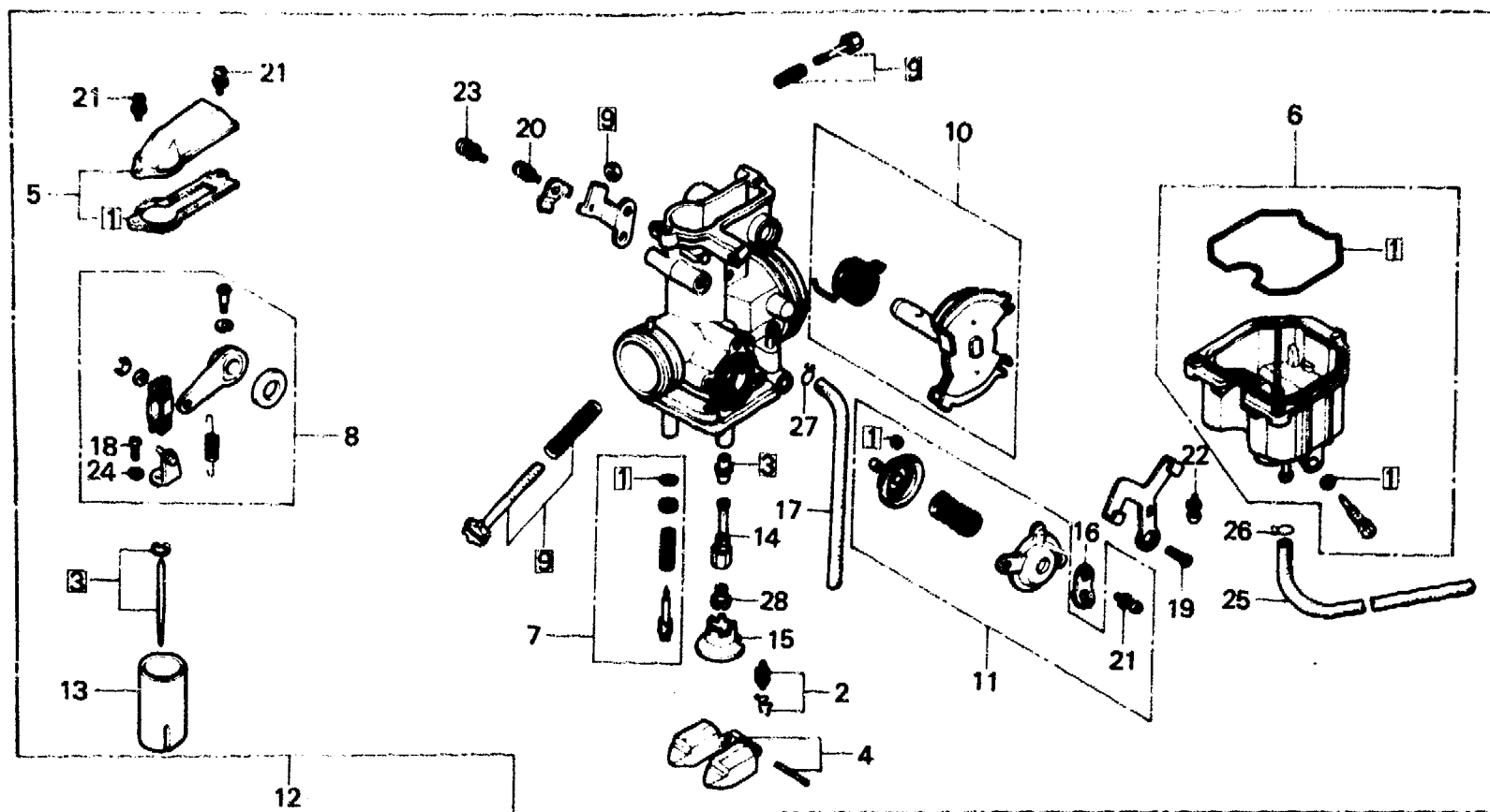
(XL250S, Sz, SA, Sb-B, DK, DM, E, ED, F, G, G1, G2, SA, SD, SW, U)

Vergaser

(XL250S, Sz, SA, Sb-B, DK, DM, E, ED, F, G, G1, G2, SA, SD, SW, U)

Carburador

(XL250S, Sz, SA, Sb-B, DK, DM, E, ED, F, G, G1, G2, SA, SD, SW, U)



B428-40

Service item	F.R.T.	Ref. No.	Part No.	Description	Reqd. No.					Serial No.	Area code	
					S	Sz	SA	Sb	Rc			
			16028-460-671	SCREW SET B	1					PD04B [B]	DK, DM, E, ED, F, SA, SW, U B, DK, DM, E, ED, F1, F2, G1 G2, SA, SD, SW, U	
10			16032-428-004	LINK SET, THROTTLE	1						B, DK, DM, E, ED, F, F1, F2 G, G1, G2, SA, SD, SW, U	
11			16048-428-004	VALVE SET, AIR CUT	1					PD04B [A]	DK, DM, E, ED, F, SA, SW, U G	
			16048-429-771	VALVE SET, AIR CUT	1					PD04B [B]	DK, DM, E, ED, F, SA, SW, U B, DK, DM, E, ED, F1, F2, G1 G2, SA, SD, SW, U	
12			16100-428-004	CARBURETOR ASSY.	1					5025911	DK, DM, E, ED, F, SA, SW, U G	
			16100-428-611	CARBURETOR ASSY.	1							
			16100-428-014	CARBURETOR ASSY.	1					5025912	DK, DM, E, ED, F, SA, SW, U B, DK, DM, E, ED, F1, SA, SW U	
			16100-428-612	CARBURETOR ASSY.							5200980	U
			16100-428-921	CARBURETOR ASSY.							5201060	G2 G1



E-15-1

Carburetor

(XL250S, Sz, SA, Sb-B, DK, DM, E, ED, F, G, G1, G2, SA, SD, SW, U)

Carburateur

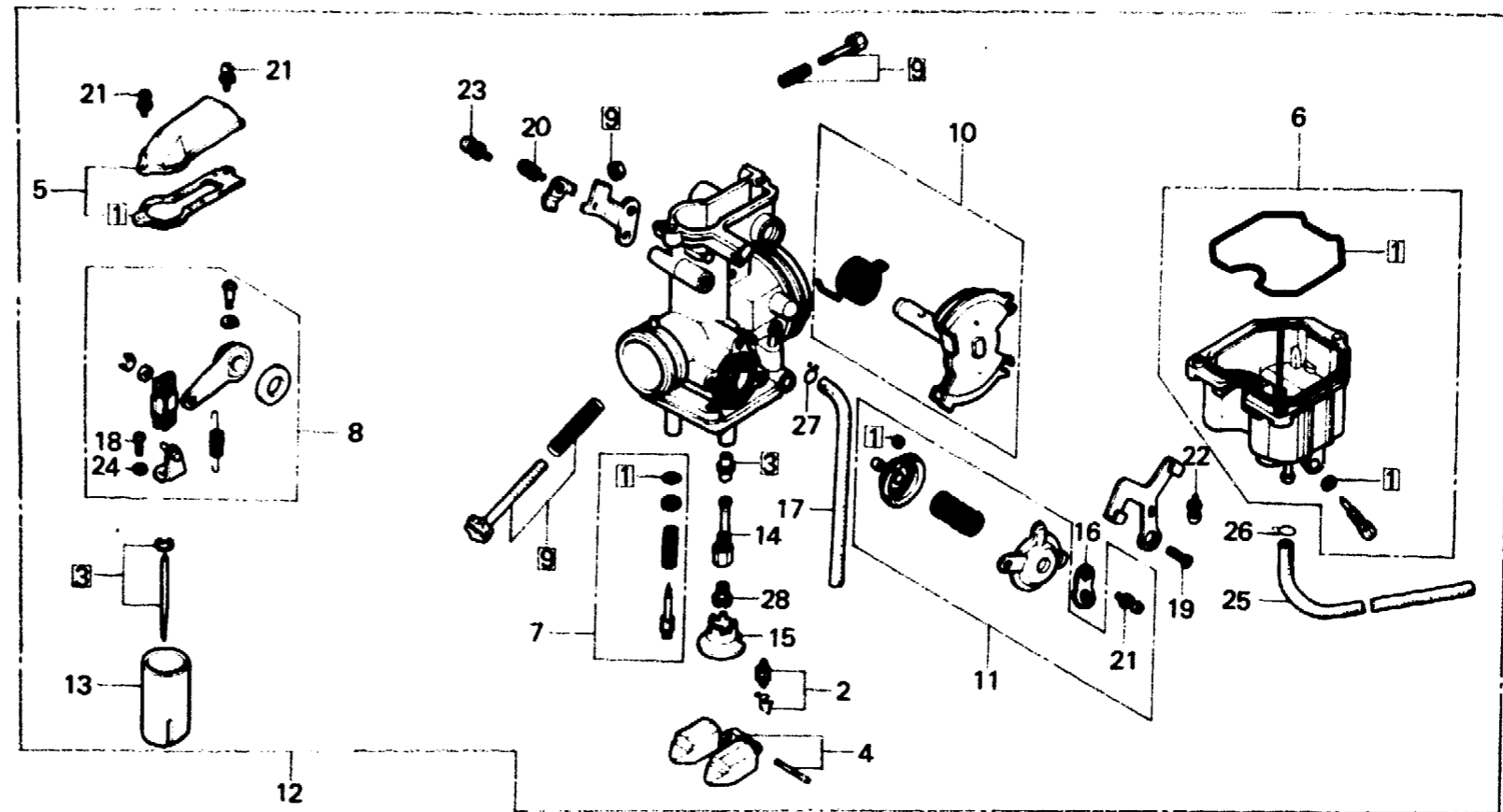
(XL250S, Sz, SA, Sb-B, DK, DM, E, ED, F, G, G1, G2, SA, SD, SW, U)

Vergaser

(XL250S, Sz, SA, Sb-B, DK, DM, E, ED, F, G, G1, G2, SA, SD, SW, U)

Carburador

(XL250S, Sz, SA, Sb-B, DK, DM, E, ED, F, G, G1, G2, SA, SD, SW, U)



B428-40

Service item	F.R.T.	Ref. No.	Part No.	Description	Reqd. No.					Serial No.	Area code
					S	Sz	SA	Sb	Rc		
			16100-428-034	CARBURETOR ASSY.		1				5200981	B, DK, DM, E, ED, F1, SA, SW U SD
			16100-428-614	CARBURETOR ASSY.		1		1		5201061	B, DK, DM, E, ED, F1, SA, SW U F2 G2
			16100-428-921	CARBURETOR ASSY.					1		F2, G2 G1
13			16111-428-004	VALVE, THROTTLE	1		1	1			B, DK, DM, E, ED, F, F1, F2 G, G1, G2, SA, SD, SW, U
14			16165-428-004	HOLDER, NEEDLE JET	1		1	1			B, DK, DM, E, ED, F, F1, G1 SA, SD, SW, U
			16165-428-671	HOLDER, NEEDLE JET	1		1	1			F2, G, G2
15			16168-382-014	HOLDER, JET	1		1	1			B, DK, DM, E, ED, F, F1, F2 G, G1, G2, SA, SD, SW, U

G 4

E-15-1

Carburetor

(XL250S, Sz, SA, Sb-B, DK, DM, E, ED, F, G, G1, G2, SA, SD, SW, U)

Carburateur

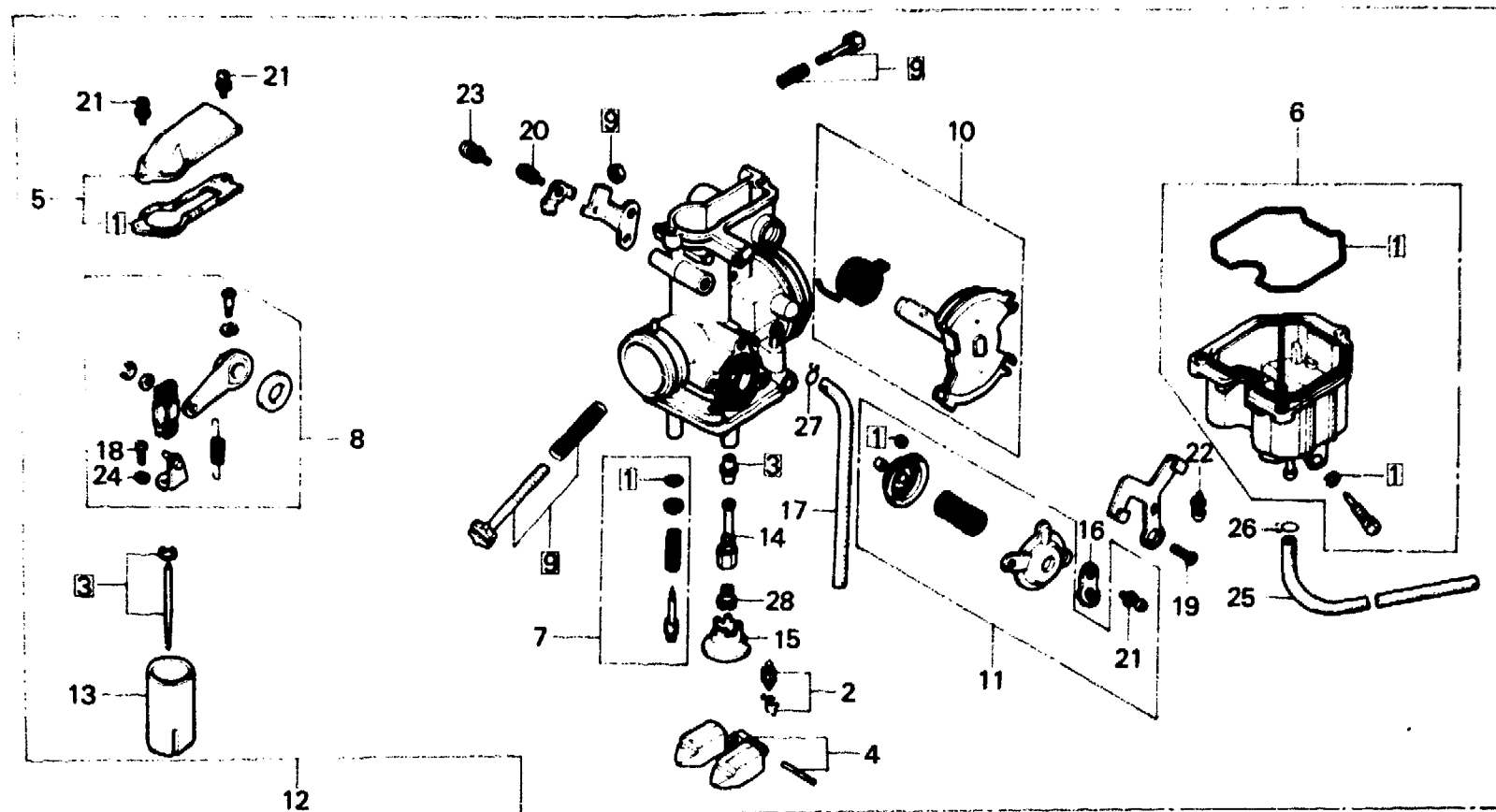
(XL250S, Sz, SA, Sb-B, DK, DM, E, ED, F, G, G1, G2, SA, SD, SW, U)

Vergaser

(XL250S, Sz, SA, Sb-B, DK, DM, E, ED, F, G, G1, G2, SA, SD, SW, U)

Carburador

(XL250S, Sz, SA, Sb-B, DK, DM, E, ED, F, G, G1, G2, SA, SD, SW, U)



B428-40

Service item	F.R.T.	Ref. No.	Part No.	Description	Reqd. No. XL250					Serial No.	Area code
					S	Sz	SA	Sb	Rc		
		16	16179-428-671	BINDER		1				PD04B [B]	B, DK, DM, E, ED, F1, SA, SW, U
						1			1	PD04A [B]	G2 B, DK, DM, E, ED, F, F1, G2, SA, SW, U
		17	16199-428-671	PIPE, AIR VENT					1	PD04B [B]	B, DK, DM, E, ED, F1, SA, SW, U
						1			1	PD04A [B]	G2 B, DK, DM, E, ED, F, F1, G2, SA, SW, U
			16199-428-771	TUBE, FUEL	1					PD04B [C]	DK, DM, E, ED, SA, F2, G1, SD
									1	PD04A [C]	G2
									1	PD04B [C]	SW, U
		18	93500-03008-0H	SCREW, PAN, 3X8	2				2		F2, G1, G2, SA, SD, SW, U B, DK, DM, E, ED, F, F1, F2, G, G1, G2, SA, SD, SW, U
		19	93600-05010-0H	SCREW, FLAT, 5X10	1				1		B, DK, DM, E, ED, F, F1, F2, G, G1, G2, SA, SD, SW, U
		20	93892-04008-08	SCREW-WASHER, 4X8	1				1		B, DK, DM, E, ED, F, F1, F2, G, G1, G2, SA, SD, SW, U



E-15-1

Carburetor

(XL250S, Sz, SA, Sb-B, DK, DM, E, ED, F, G, G1, G2, SA, SD, SW, U)

Carburateur

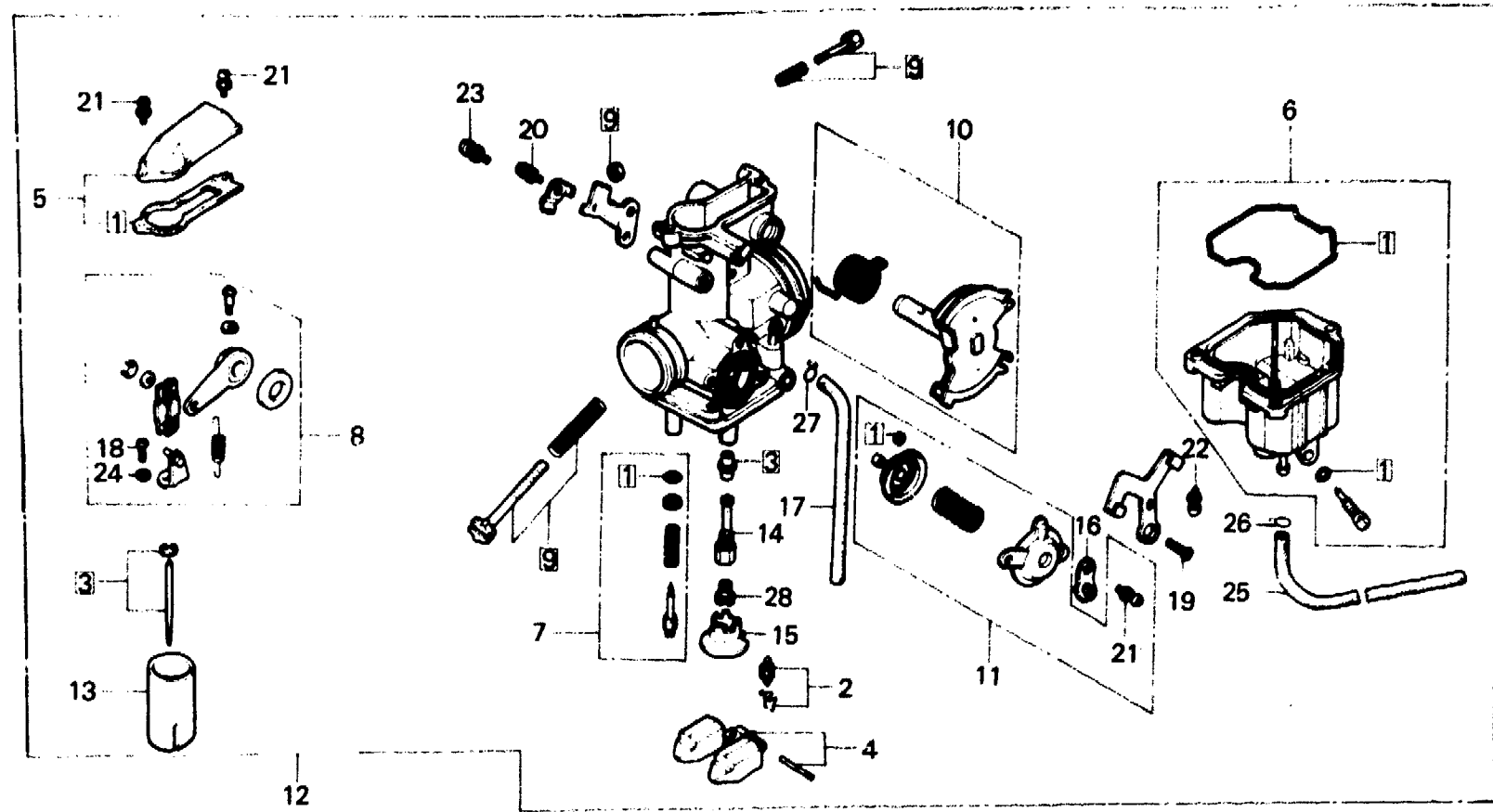
(XL250S, Sz, SA, Sb-B, DK, DM, E, ED, F, G, G1, G2, SA, SD, SW, U)

Vergaser

(XL250S, Sz, SA, Sb-B, DK, DM, E, ED, F, G, G1, G2, SA, SD, SW, U)

Carburador

(XL250S, Sz, SA, Sb-B, DK, DM, E, ED, F, G, G1, G2, SA, SD, SW, U)



B428-40

Service item	F.R.T.	Ref. No.	Part No.	Description	Reqd. No. XL250				Serial No.	Area code
					S	Sz	SA	Sb		
		21	93892-04012-08	SCREW-WASHER, 4X12	4		4	4		B, DK, DM, E, ED, F, F1, F2 G, G1, G2, SA, SD, SW, U
		22	93892-04016-08	SCREW-WASHER, 4X16	3		3	3		B, DK, DM, E, ED, F, F1, F2 G, G1, G2, SA, SD, SW, U
		23	93892-05010-08	SCREW-WASHER, 5X10	1		1	1		B, DK, DM, E, ED, F, F1, F2 G, G1, G2, SA, SD, SW, U
		24	94111-03800	WASHER, SPRING, 3MM	2		2	2		B, DK, DM, E, ED, F, F1, F2 G, G1, G2, SA, SD, SW, U
		25	95001-35360-40	TUBE, FUEL, 3.5X360	1				PD04B [A]	DK, DM, E, ED, F, SA, SW, U G
			16143-413-751	TUBE, FUEL	1				PD04B [B]	DK, DM, E, ED, F, SA, SW, U B, DK, DM, E, ED, F1, F2, G1 G2, SA, SD, SW, U
		26	95002-02070	CLIP B7, TUBE	1				PD04B [A]	DK, DM, E, ED, F, SA, SW, U G
					1				PD04B [B]	DK, DM, E, ED, F, SA, SW, U B, DK, DM, E, ED, F1, F2, G1 G2, SA, SD, SW, U
		27	95002-02080	CLIP B8, TUBE	1		2	2	PD04B [A]	DK, DM, E, ED, F, SA, SW, U G



E-15-1

Carburetor

(XL250S, Sz, SA, Sb-B, DK, DM, E, ED, F, G, G1, G2, SA, SD, SW, U)

Carburateur

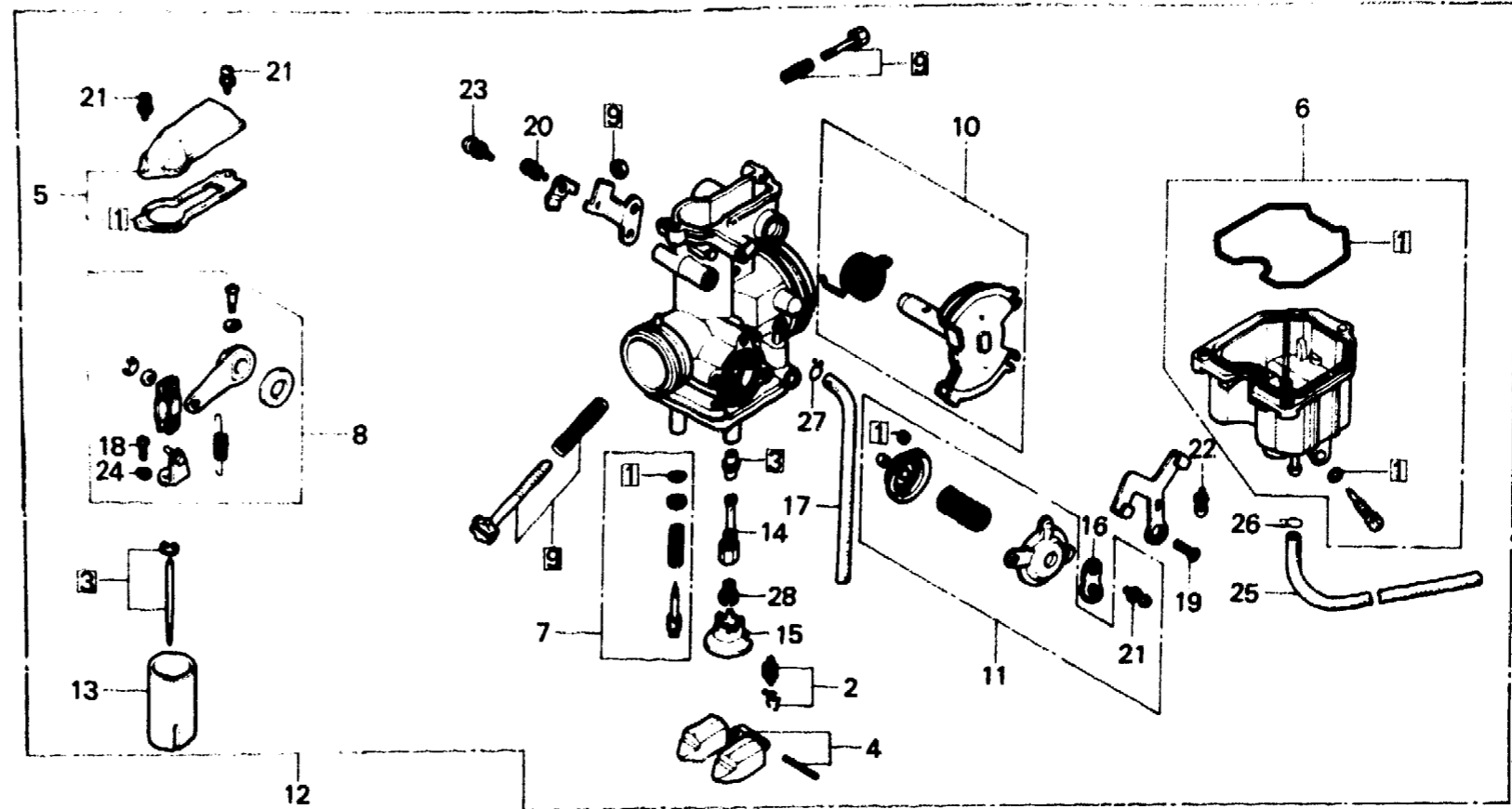
(XL250S, Sz, SA, Sb-B, DK, DM, E, ED, F, G, G1, G2, SA, SD, SW, U)

Vergaser

(XL250S, Sz, SA, Sb-B, DK, DM, E, ED, F, G, G1, G2, SA, SD, SW, U)

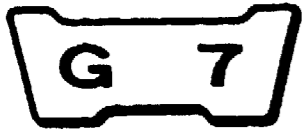
Carburador

(XL250S, Sz, SA, Sb-B, DK, DM, E, ED, F, G, G1, G2, SA, SD, SW, U)



B428-40

Service item	F.R.T.	Ref. No.	Part No.	Description	Reqd. No.					Serial No.	Area code
					S	Sz	SA	Sb	Rc		
		28	99101-393-1150	JET, MAIN, #115	1		1				G, G2
			99101-393-1200	JET, MAIN, #120	1		1	1			B, DK, DM, E, ED, F, F1, F2 G1, SA, SD, SW, U



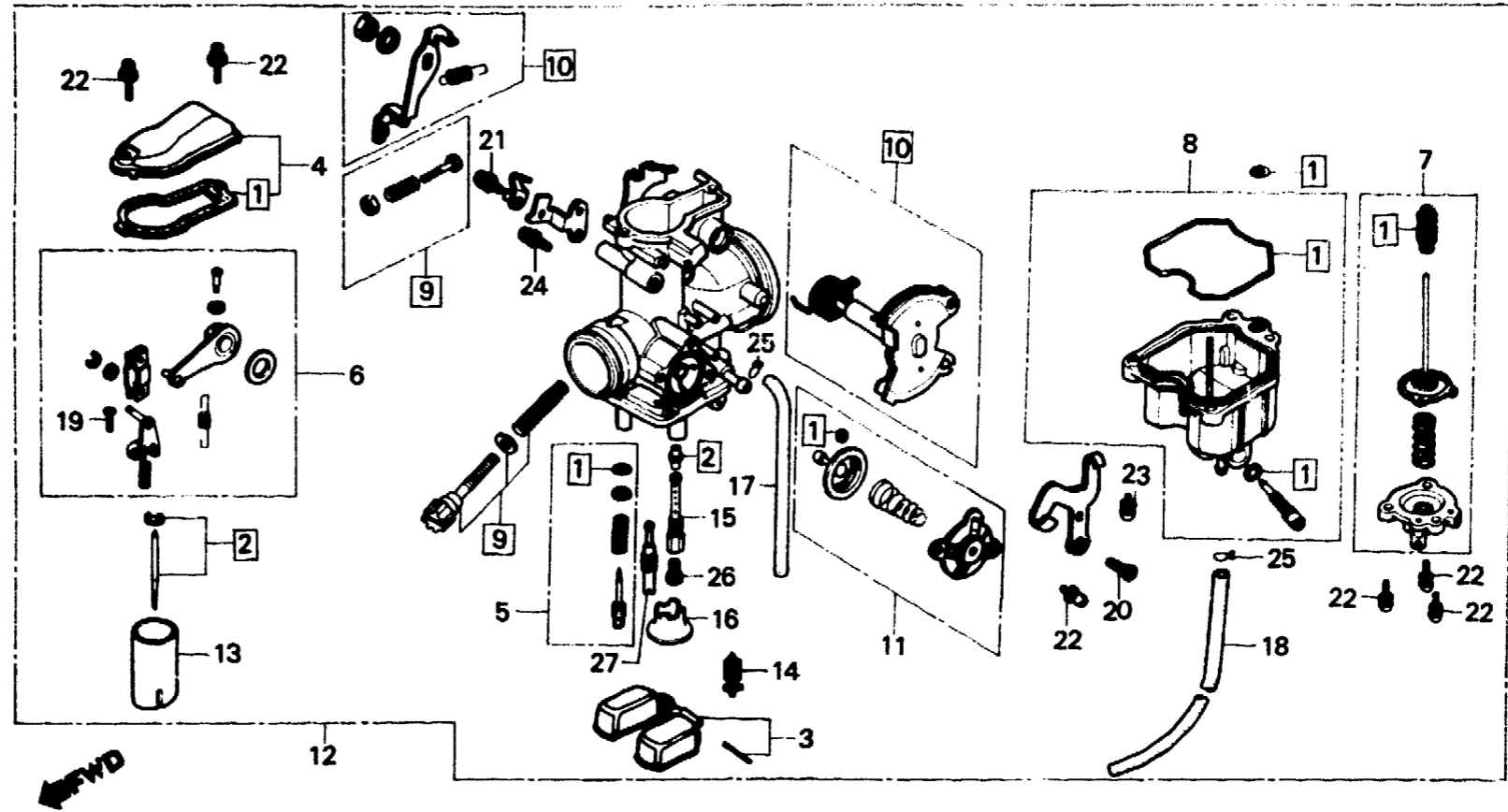
E-15-2

Carburetor
(XL250Rc)

Carburateur
(XL250Rc)

Vergaser
(XL250Rc)

Carburador
(XL250Rc)



BKB7-26

Service item	F.R.T.	Ref. No.	Part No.	Description	Reqd. No.					Serial No.	Area code
					S	Sz	SA	Sb	Rc		
GASKET SET	1.0	1	16010-428-671	GASKET SET					1		
FLOAT SET	0.6	2	16012-KB7-004	NEEDLE SET, JET					1		
ARM SET, LINK		3	16013-439-921	FLOAT SET					1		
LINK SET, THROTTLE		4	16014-385-680	TOP SET					1		
VALVE COMP., FLOAT		5	16016-402-004	SCREW SET A					1		
JET, MAIN											
TOP SET	0.2	6	16018-428-671	ARM SET, LINK					1		
NEEDLE SET JET	0.8	7	16021-428-771	DIAPHRAGM SET, PUMP					1		
VALVE, THROTTLE		8	16023-426-003	CHAMBER SET B, FLOAT					1		
DIAPHRAGM SET, PUMP	0.4	9	16028-435-771	SCREW SET B					1		
CHAMBER SET B, FLOAT	0.3	10	16032-KB7-004	LINK SET, THROTTLE					1		
VALVE SET, AIR CUT	0.1										
CARBURETOR ASSY.	0.5	11	16048-KB7-004	VALVE SET, AIR CUT					1		
		12	16100-KB7-004	CARBURETOR ASSY.					1		B, CM, DK, DM, E, ED, F1, F2 IT, SA, SD, SW, U G1 G2
			16100-KB7-611	CARBURETOR ASSY.					1		
			16100-KB7-631	CARBURETOR ASSY.					1		
		19	16111-428-671	VALVE, THROTTLE					1		
		14	16155-413-751	VALVE COMP., FLOAT					1		
		15	16165-473-004	HOLDER, NEEDLE JET					1		

G 8

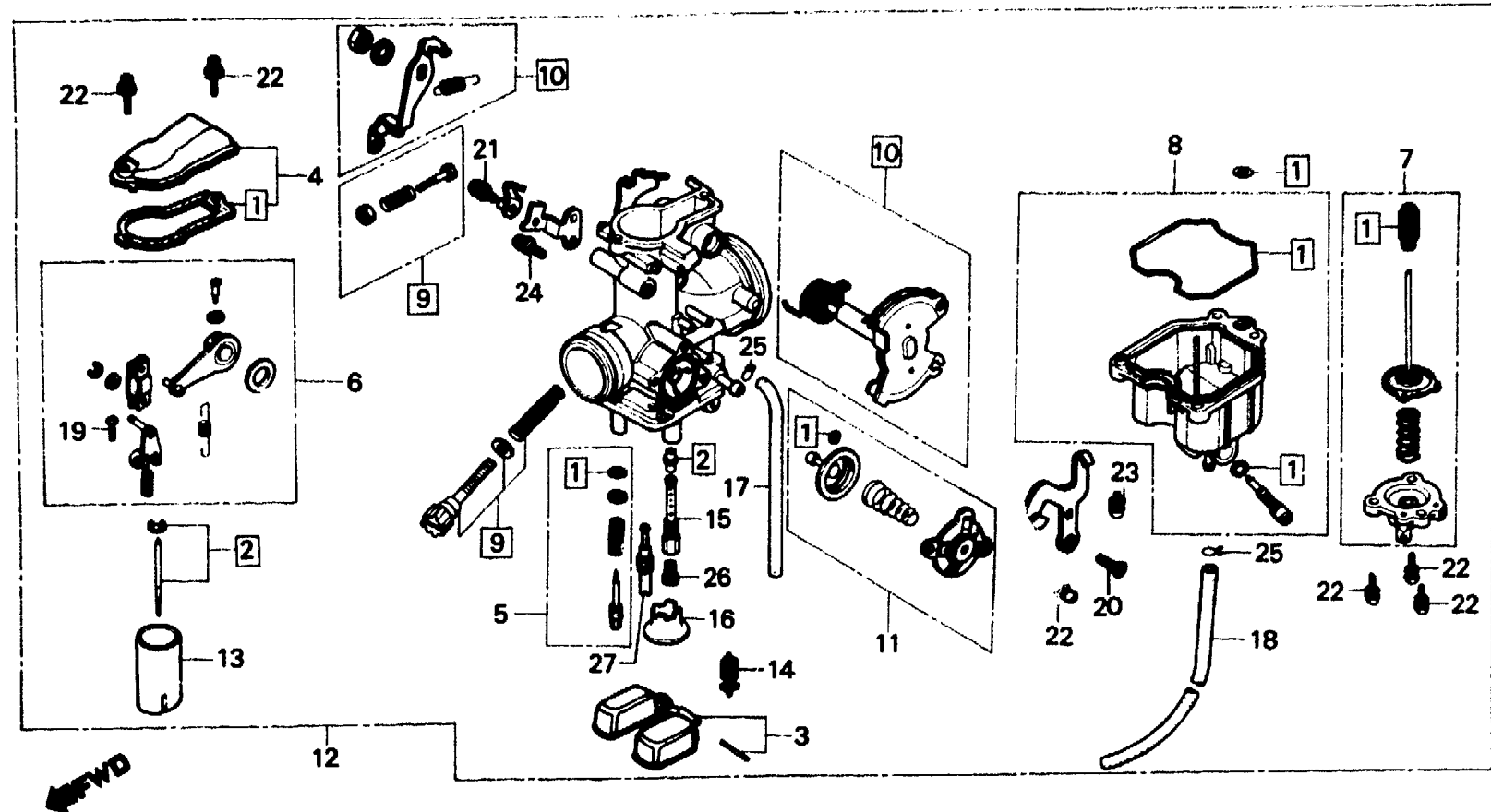
E-15-2

**Carburetor
(XL250Rc)**

**Carburateur
(XL250Rc)**

**Vergaser
(XL250Rc)**

**Carburador
(XL250Rc)**



BKB7-26

Service item	F.R.T.	Ref. No.	Part No.	Description	Reqd. No.					Serial No.	Area code
					S	Sz	SA	Sb	Rc		
		16	16168-382-014	HOLDER, JET					1		
		17	16199-355-701	TUBE, AIR VENT					1		
		18	16199-402-004	TUBE, OVER FLOW					1		
		19	93500-03008-0H	SCREW, PAN, 3X8					2		
		20	93600-05010-0H	SCREW, FLAT, 5X10					1		
		21	93892-04008-08	SCREW-WASHER, 4X8					1		
		22	93892-04012-08	SCREW-WASHER, 4X12					7		
		23	93892-04016-08	SCREW-WASHER, 4X16					3		
		24	93892-05010-08	SCREW-WASHER, 5X10					1		
		25	95002-02070	CLIP B7, TUBE					2		
		26	99101-393-1100	JET, MAIN, #110					1		
		27	99103-440-0380	JET, SLOW, #38					1		

1982.01.10

E

G8