

D 10

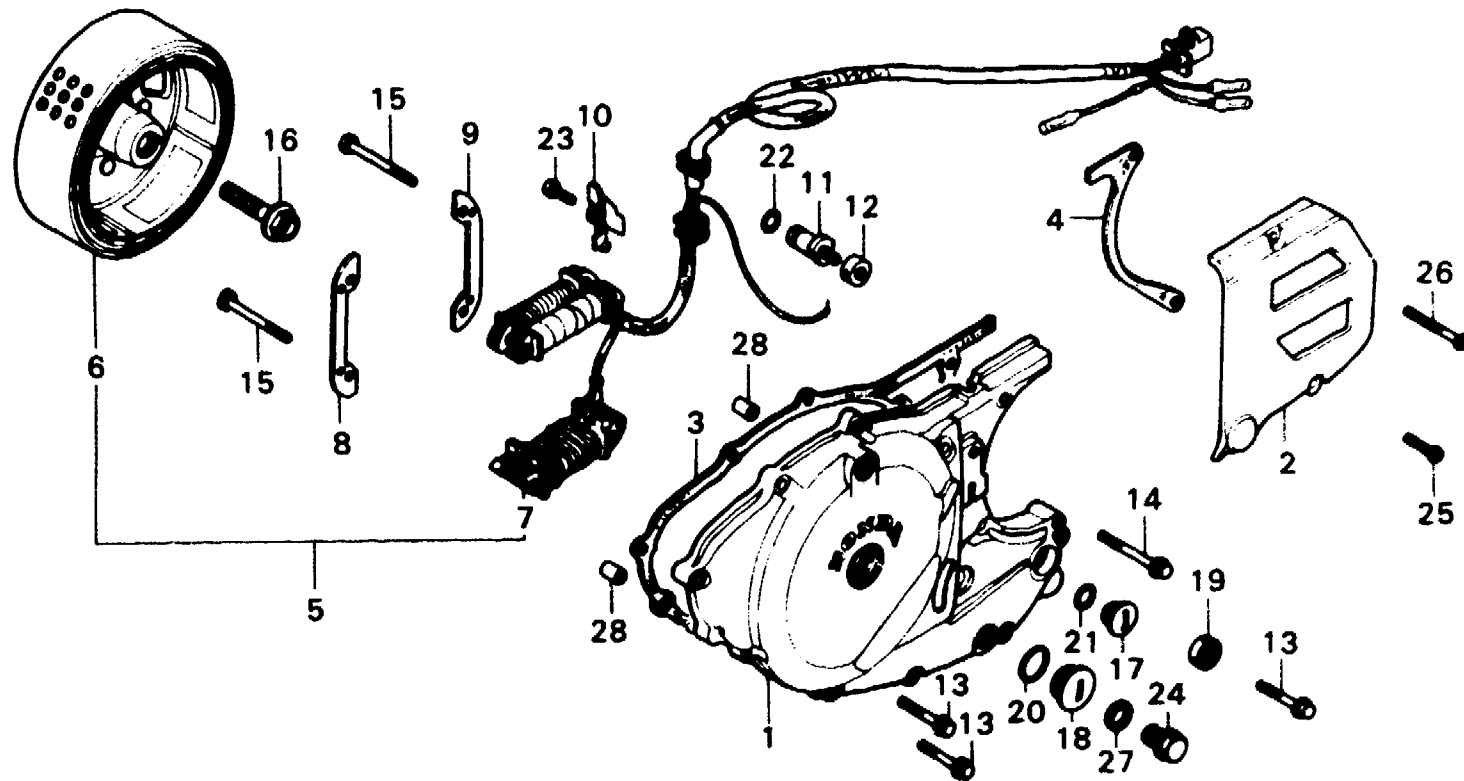
E-8

**Left crankcase cover • Generator
(XL250S•Sz•SA•SB)**

**Couvercle de carter moteur gauche •
Générateur (XL250S•Sz•SA•SB)**

**Linker Kurbelgehäusedeckel •
Lichtmaschine (XL250S•Sz•SA•SB)**

**Cubierta de cárter de motor izquierdo •
Generador (XL250S•Sz•SA•SB)**



B428-8

Service item	F.R.T.	Ref. No.	Part No.	Description	Reqd. No.				Serial No.	Area code
					S	Sz	SA	Sb Rc		
COVER COMP., L. CRANKCASE	0.5	1	11341-428-000	COVER COMP., L. CRANKCASE	1	1	1			
FLYWHEEL COMP.			11341-428-010	COVER COMP., L. CRANKCASE				1		
OIL SEAL, 12X25X7		2	11351-428-300	COVER, L. RR. CRANKCASE	1	1	1	1		
COVER, L. RR. CRANKCASE	0.1	3	11395-428-000	GASKET, L. CRANKCASE COVER	1				5024491	
CONTACT, NEUTRAL SWITCH									DK,DM,E,ED,F,G,SA,SW	
GASKET, L. CRANKCASE COVER	0.3				1	1			U	
GENERATOR ASSY., A.C.	0.8						1		CM	
STATOR COMP.	0.6		11395-429-000	GASKET, L. COVER	1				5202460	
									CM	
								5024492	DK,DM,E,ED,F,G,SA,SW	
									U	
								5202461	CM	
									B,DK,DM,E,ED,F1,F2,G1	
									G2,SA,SD,SW,U	
									CM	
		4	11396-428-300	GASKET, L. RR. COVER	1	1	1	1		
		5	31100-428-004	GENERATOR ASSY., A.C.	1		1			
									B,E,ED,F,F1,F2,G,G1	
									G2,SA,SW	
									CM,DK,DM,U	
			31100-428-630	GENERATOR ASSY., A.C. (ND)	1	1	1	1		
									SD	

D 11

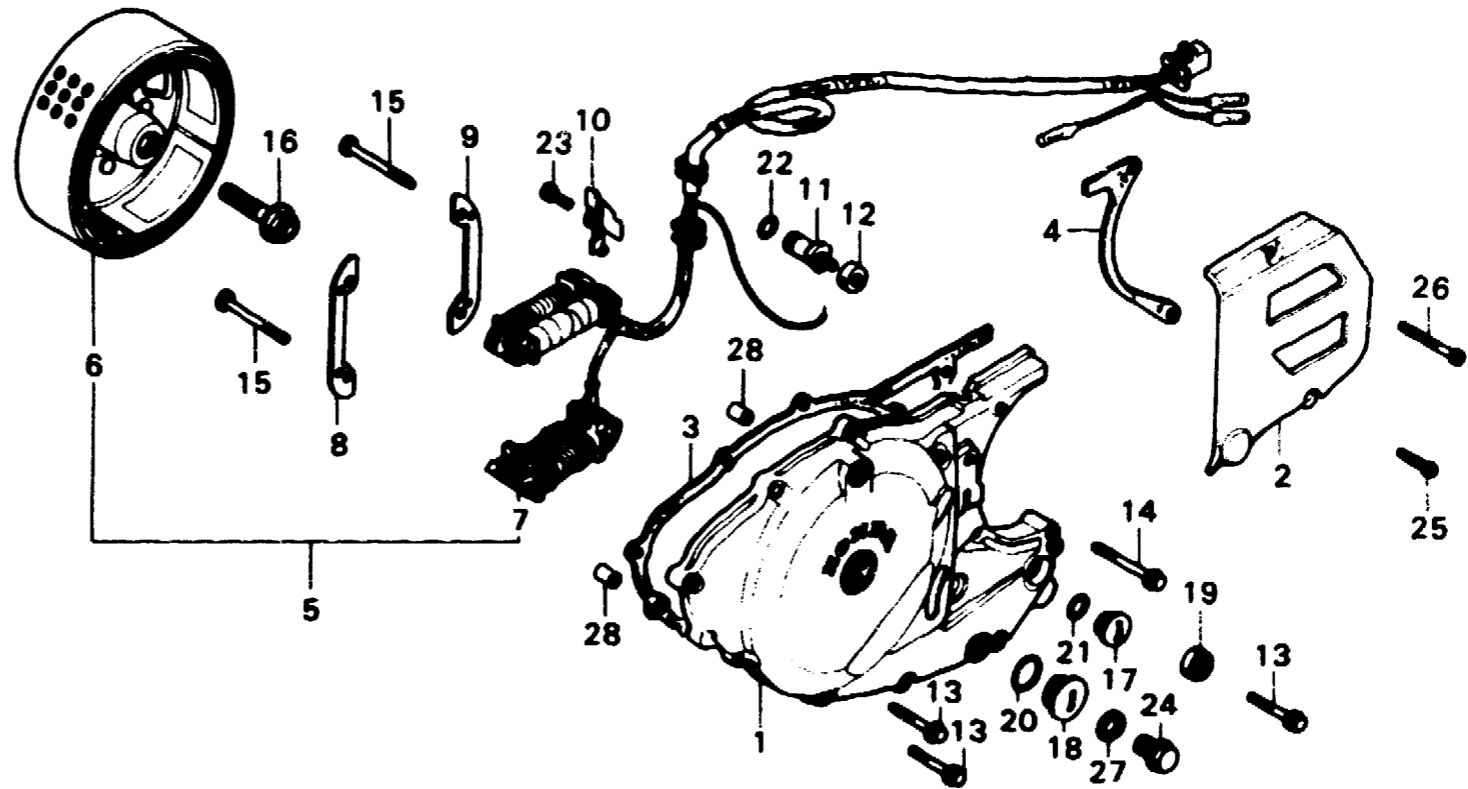
E-8

**Left crankcase cover • Generator
(XL250S•Sz•SA•SB)**

**Couvercle de carter moteur gauche •
Générateur (XL250S•Sz•SA•SB)**

**Linker Kurbelgehäusedeckel •
Lichtmaschine (XL250S•Sz•SA•SB)**

**Cubierta de cárter de motor izquierdo •
Generador (XL250S•Sz•SA•SB)**



B428-8

Service item	F.R.T.	Ref. No.	Part No.	Description	Reqd. No.					Serial No.	Area code
					S	Sz	SA	Ss	Rc		
			31100-428-681	GENERATOR ASSY., A.C. (ND)						1	B,E,ED,F1,F2,G1,G2,SA SW
6			31110-428-004	FLYWHEEL COMP.	1		1				B,E,ED,F,F1,F2,G,G1 G2,SA,SW
			31110-428-630	FLYWHEEL COMP. (ND)	1	1	1	1			CM,DK,DM,U
			31110-428-681	FLYWHEEL COMP. (ND)						1	SD
			31120-428-681	FLYWHEEL COMP. (ND)						1	B,E,ED,F1,F2,G1,G2,SA SW
7			31120-428-004	STATOR COMP.	1		1				B,E,ED,F,F1,F2,G,G1 G2,SA,SW
			31120-428-630	STATOR COMP.	1	1	1	1			CM,DK,DM,U
			31120-428-681	STATOR COMP. (ND)						1	SD
			31120-428-681	STATOR COMP. (ND)						1	B,E,ED,F1,F2,G1,G2,SA SW
8			31125-428-000	PLATE A, COIL SETTING	1	1	1	1			
9			31126-428-000	PLATE B, COIL SETTING	1	1	1	1			
10			32111-428-000	CLAMPER, CORD	1	1	1	1			
11			35750-028-000	CONTACT, NEUTRAL SWITCH	1	1	1	1			

D 12

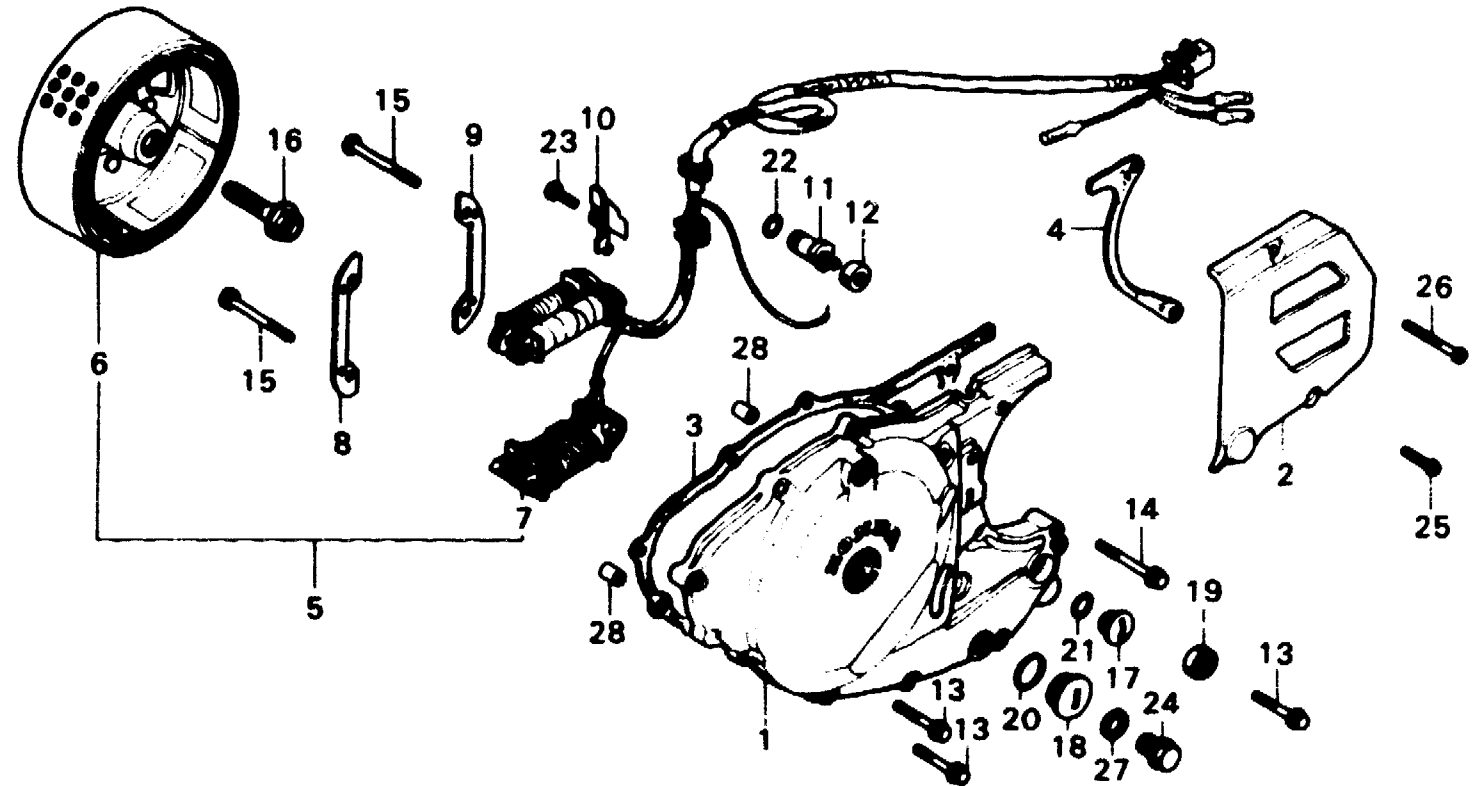
E-8

**Left crankcase cover • Generator
(XL250S•Sz•SA•Sb)**

**Couvercle de carter moteur gauche •
Générateur (XL250S•Sz•SA•Sb)**

**Linker Kurbelgehäusedeckel •
Lichtmaschine (XL250S•Sz•SA•Sb)**

**Cubierta de cárter de motor izquierdo •
Generador (XL250S•Sz•SA•Sb)**



B428-8

Service item	F.R.T.	Ref. No.	Part No.	Description	Reqd. No					Serial No.	Area code
					S	Sz	SA	Sb	Rc		
		12	35752-329-300	SPACER, NEUTRAL SWITCH	1	1	1	1			
		13	90005-415-00C	BOLT, FLANGE, 6X25	9	9					
			96000-06025-00	BOLT, FLANGE, 6X25	9	9	9	9			
		14	90007-428-000	BOLT, FLANGE, 6X40	1	1					
			96000-06040-00	BOLT, FLANGE, 6X40	1	1	1	1			
		15	90012-634-670	BOLT, HEX., 6X42	4	4	4	4			
		16	90023-428-000	BOLT, FLANGE, 12X40	1	1	1	1			
		17	90084-428-000	CAP, A.C. GENERATOR	1	1	1	1			
		18	90087-428-000	CAP, 30MM	1	1	1	1			
		19	91201-362-000	OIL SEAL, 12X25X7	1	1	1	1			
		20	91301-028-000	O-RING, 27X2.0	1	1	1	1			
		21	91303-377-000	O-RING, 13.8X2.5	1	1	1	1			
		22	91312-107-000	O-RING, 7X1.7	1	1	1	1			
		23	92000-06012	BOLT, HEX., 6X12	1	1	1	1			
		24	92800-12000	BOLT, DRAIN PLUG, 12MM	1	1	1	1			
		25	93500-06018	SCREW, PAN, 6X18	1	1	1	1			

1982.01.10

E

D12

D 13

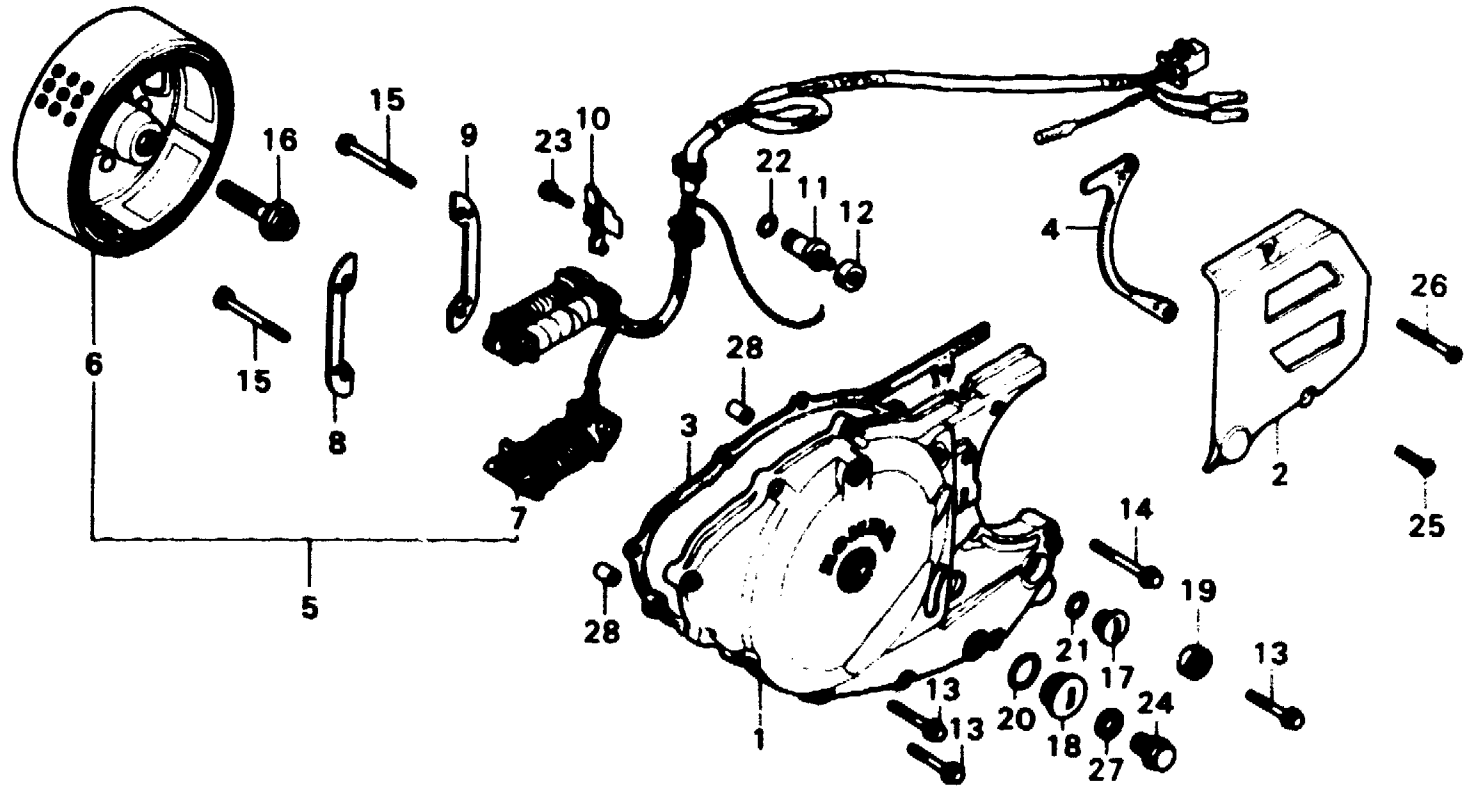
E-8

**Left crankcase cover • Generator
(XL250S • Sz • SA • SB)**

**Couvercle de carter moteur gauche •
Générateur (XL250S • Sz • SA • SB)**

**Linker Kurbelgehäusedeckel •
Lichtmaschine (XL250S • Sz • SA • SB)**

**Cubierta de cárter de motor izquierdo •
Generador (XL250S • Sz • SA • SB)**



B428-8

Service item	F.R.T.	Ref. No.	Part No.	Description	Reqd. No					Serial No.	Area code
					S	Sz	SA	Sb	Rc		
		26	93500-06040	SCREW, PAN, 6X40	1	1	1	1			
		27	94109-12000	WASHER, DRAIN PLUG, 12MM	1	1	1	1			
		28	94301-10160	PIN A, DOWEL, 10X16	2	2	2	2			

D 14

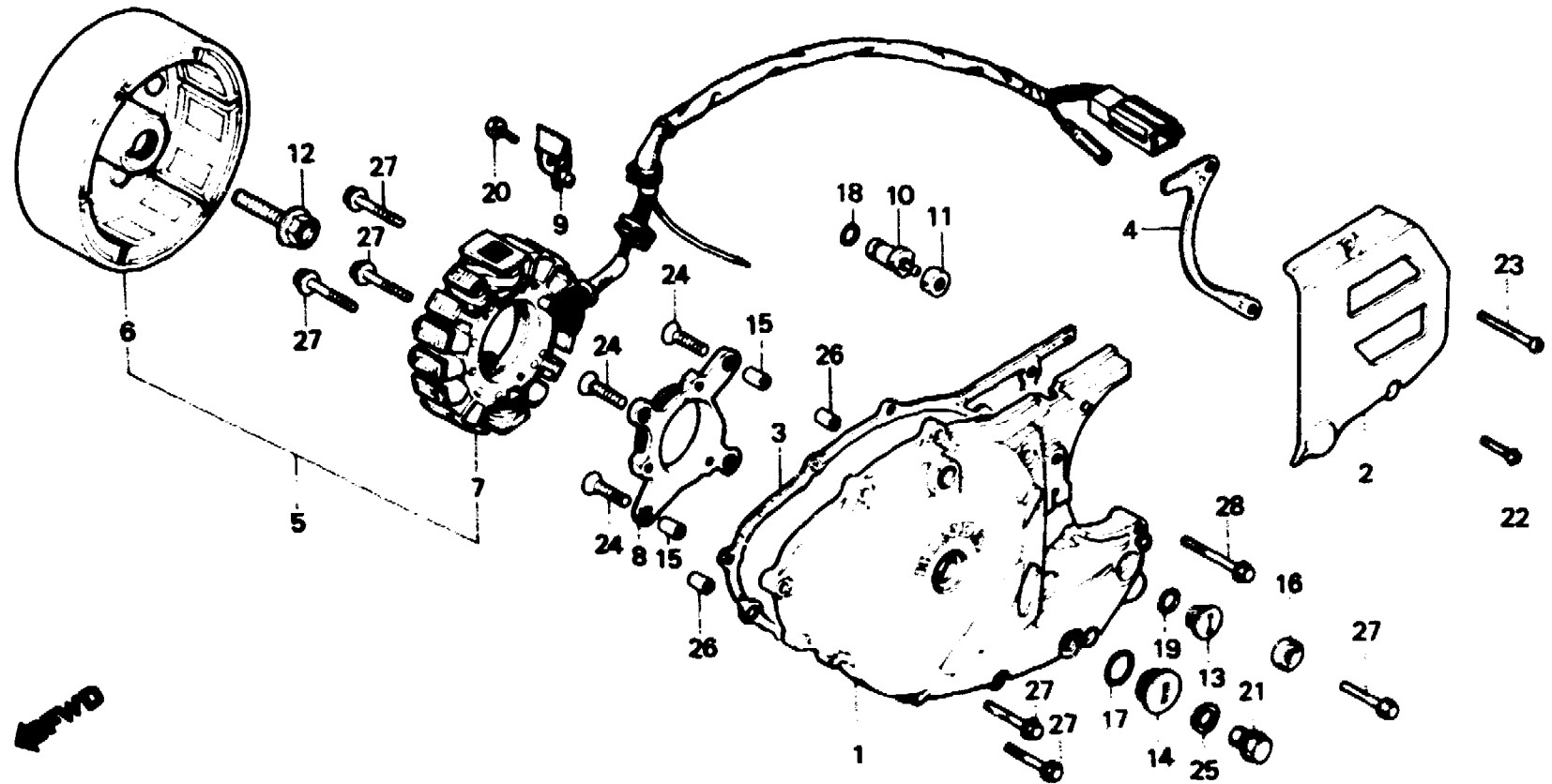
E-8-1

**Left crankcase cover - Generator
(XL250Rc)**

**Couvercle de carter moteur gauche -
Générateur (XL250Rc)**

**Linker Kurbelgehäusedeckel -
Lichtmaschine (XL250Rc)**

**Cubierta de cárter de motor izquierdo -
Generador (XL250Rc)**



B428 8A

Service item	F.R.T.	Ref. No.	Part No.	Description	Reqd. No.					Serial No.	Area code
					S	Sz	SA	SB	Rc		
COVER COMP., L. CRANKCASE	0.5	1	11341-KB7-000	COVER COMP., L. CRANKCASE					1		
FLYWHEEL COMP.		2	11351-428-900	COVER, L. RR. CRANKCASE					1		
COVER, L. RR. CRANKCASE	0.1	3	11395-429-000	GASKET, L. COVER					1		
CONTACT, NEUTRAL SWITCH		4	11396-428-300	GASKET, L. RR. COVER					1		
GASKET, L. COVER	0.3	5	31100-KB7-004	GENERATOR ASSY., FLYWHEEL TYPE A.C.					1		
GENERATOR ASSY., FLYWHEEL TYPE A.C.	0.8										
FLYWHEEL COMP.	0.6	6	31110-KB7-004	FLYWHEEL COMP.					1		
STATOR COMP.	0.6	7	31120-KB7-004	STATOR COMP.					1		
OIL SEAL, 12X25X7	0.4	8	31125-471-700	SPACER, STATOR					1		
		9	32111-428-000	CLAMPER, CORD					1		
		10	35750-028-000	CONTACT, NEUTRAL SWITCH					1		
		11	35752-329-310	SPACER, NEUTRAL SWITCH					1		
		12	90023-471-000	BOLT, FLANGE, 12X50					1		
		13	90084-471-000	CAP, A.C. GENERATOR					1		
		14	90087-471-000	CAP, 30MM					1		

1982.01.10

E

D14

D 15

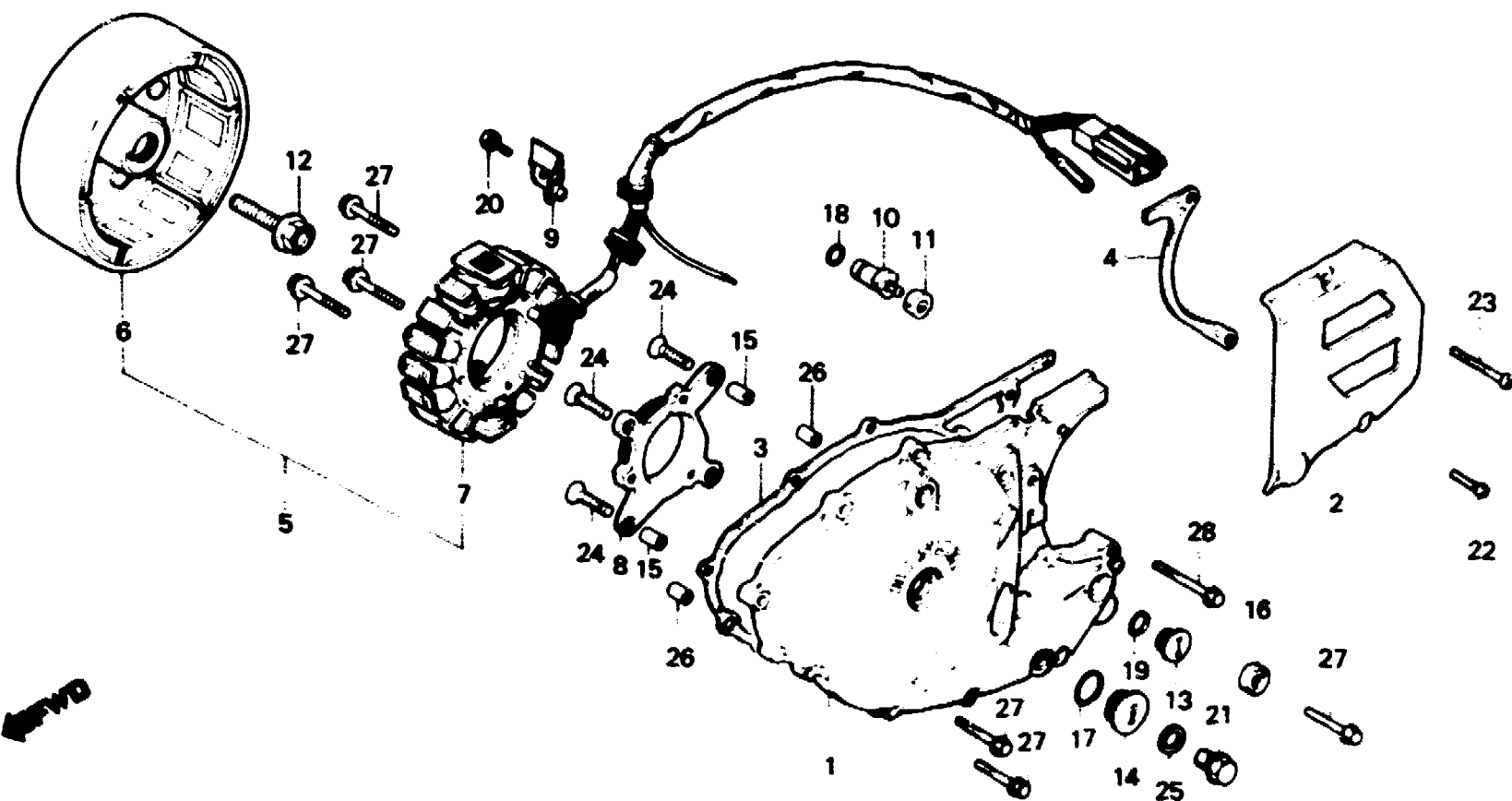
E-8-1

**Left crankcase cover - Generator
(XL250Rc)**

**Couvercle de carter moteur gauche -
Générateur (XL250Rc)**

**Linker Kurbelgehäusedeckel -
Lichtmaschine (XL250Rc)**

**Cubierta de cárter de motor izquierdo -
Generador (XL250Rc)**



B428 8A

Service item	F.R.T.	Ref. No.	Part No.	Description	Reqd No XL250					Serial No.	Area code
					S	Sz	SA	SA	Rc		
		15	90701-471-000	PIN, DOWEL, 8X5					2		
		16	91201-362-000	OIL SEAL, 12X25X7					1		
		17	91301-028-000	O-RING, 27X2.0					1		
		18	91301-473-003	O-RING, 7X1.7					1		
		19	91303-377-000	O-RING, 13.8X2.5					1		
		20	92000-06012	BOLT, HEX., 6X12					1		
		21	92800-12000	BOLT, DRAIN PLUG, 12MM					1		
		22	93500-06018	SCREW, PAN, 6X18					1		
		23	93500-06040	SCREW, PAN, 6X40					1		
		24	93600-06020	SCREW, FLAT, 6X20					4		
		25	94109-12000	WASHER, DRAIN PLUG, 12MM					1		
		26	94301-10160	PIN A, DOWEL, 10X16					2		
		27	96000-06025-00	BOLT, FLANGE, 6X25					12		
		28	96000-06040-00	BOLT, FLANGE, 6X40					1		

1982.01.10

E

D15

D 16

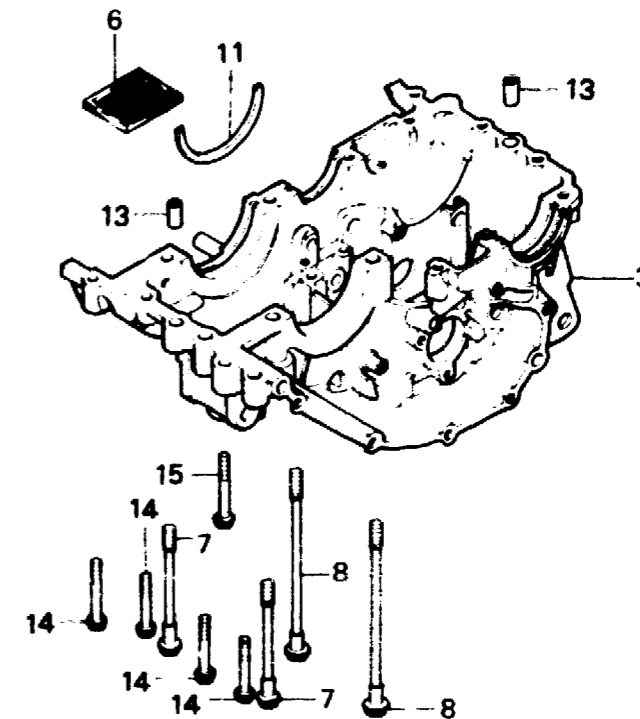
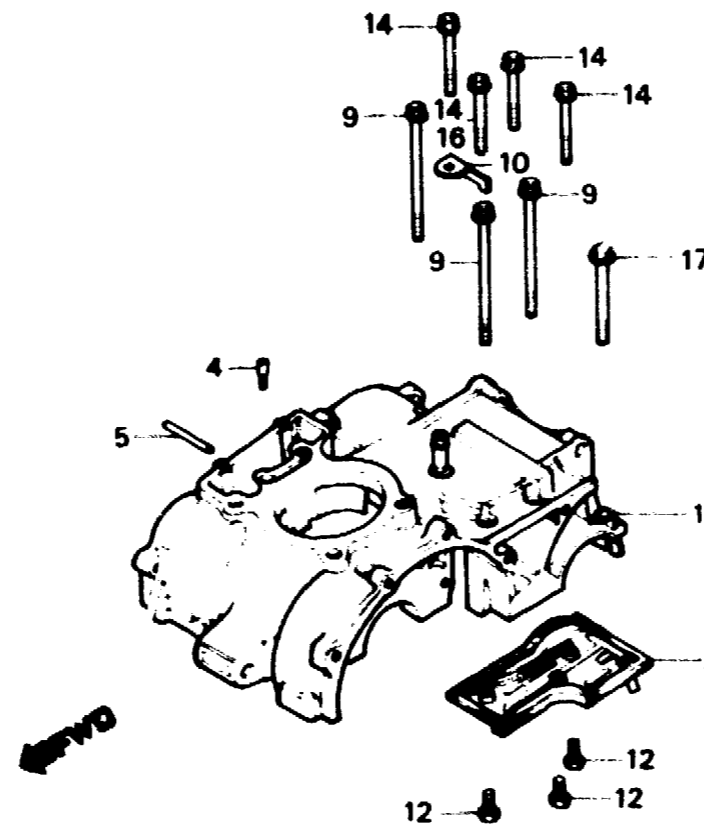
E-9

Crankcase

Carter moteur

Kurbelgehäuse

Cárter de motor



B428-9A

Service item	F.R.T.	Ref. No.	Part No.	Description	Reqd. No.					Serial No.	Area code	
					S	Sz	SA	SA	Rc			
CRANKCASE COMP., UPPER PLATE COMP., BREATHER CRANKCASE COMP., LOWER SCREEN, OIL FILTER	*4.6 *3.4 *3.7 0.6	1	11100-428-030	CRANKCASE COMP., UPPER	1					5017072 5103218		
			11100-428-040	CRANKCASE COMP., UPPER	1					5017073 5103219		
		2	11100-KA6-670 11110-428-000	CRANKCASE COMP., UPPER PLATE COMP., BREATHER	1		1		1		5002291	DK, DM, E, ED, F, G, SA, SW U
			11110-429-000	PLATE COMP., BREATHER	1	1	1	1			5002292	CM DK, DM, E, ED, F, G, SA, SW U
		3	11110-473-000 11200-428-020	PLATE COMP., BREATHER CRANKCASE COMP., LOWER	1				1			5017072 5103218
			11200-428-030	CRANKCASE COMP., LOWER	1					5017073 5103219		
		4	11200-KA6-670 11333-376-000	CRANKCASE COMP., LOWER ORIFICE, OIL			1	1				
		5	11335-428-000	PIPE, OIL PASS	1	1	1	1	1			

E 1

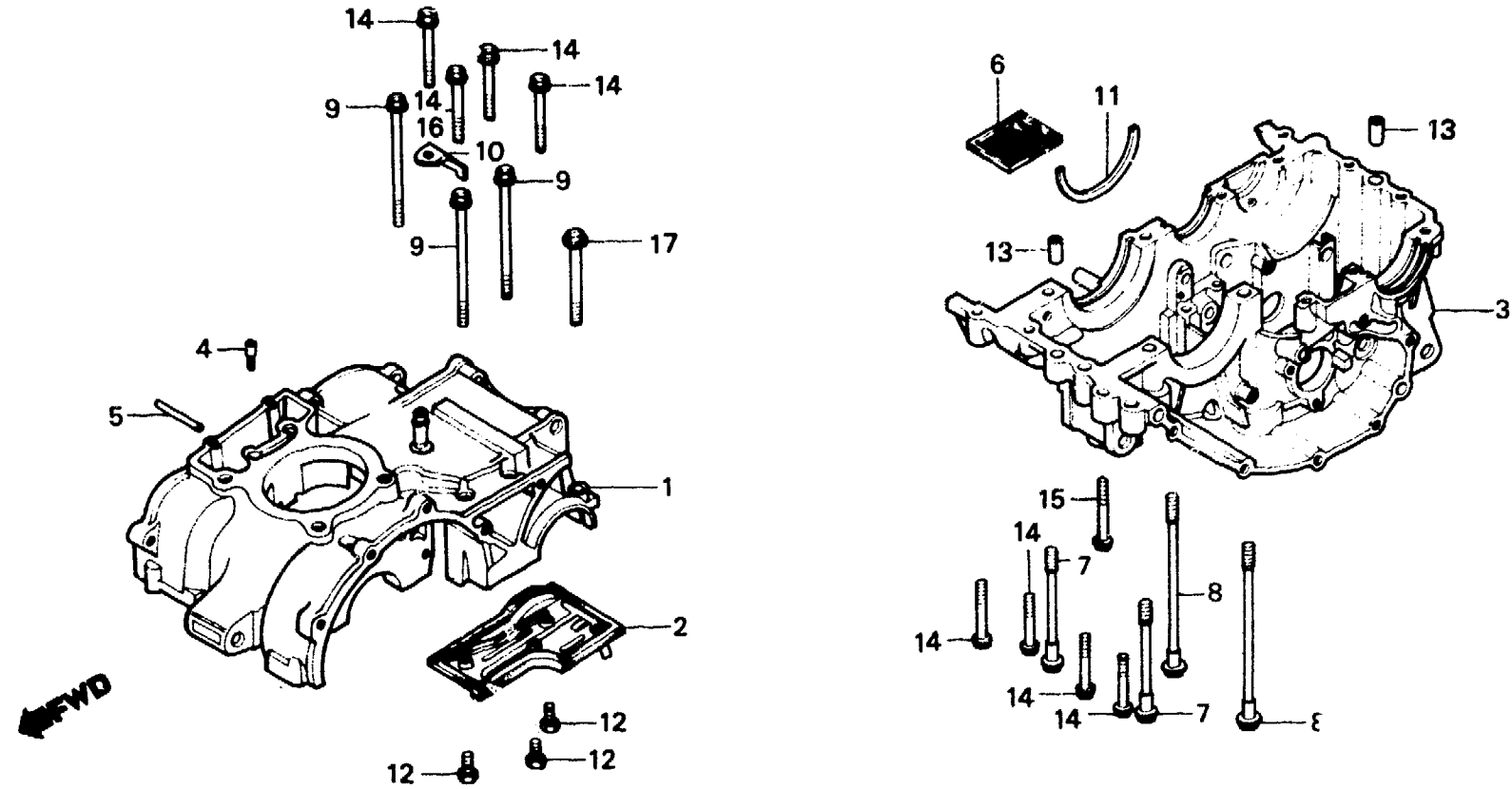
E-9

Crankcase

Carter moteur

Kurbelgehäuse

Cárter de motor



B428-9A

Service item	F.R.T.	Ref. No.	Part No.	Description	Reqd. No.					Serial No.	Area code
					S	Sz	SA	Sb	Rc		
		6	15421-428-000	SCREEN, OIL FILTER	1	1	1	1	1		
		7	90044-428-000	BOLT, UBS, 8X70	2	2	2	2	2		
		8	90045-329-000	BOLT, UBS, 8X114	2	2	2	2	2		
		9	90051-393-000	BOLT, FLANGE, 6X75	3	3	3	3	3		
		10	90511-429-000	CLAMPER, TUBE					1		
		11	90601-428-000	SET RING, 72MM	1	1	1	1	1		
		12	92000-06012	BOLT, HEX., 6X12	3	3	3	3	3		
		13	94301-10160	PIN A, DOWEL, 10X16	2	2	2	2	2		
		14	95700-06032-00	BOLT, FLANGE, 6X32	8	8	8	8	8		
		15	95700-06040-00	BOLT, FLANGE, 6X40	1	1	1	1	1		
		16	95700-06055-00	BOLT, FLANGE, 6X55					1		
		17	95700-08045-00	BOLT, FLANGE, 8X45	1	1	1	1	1		

E 2

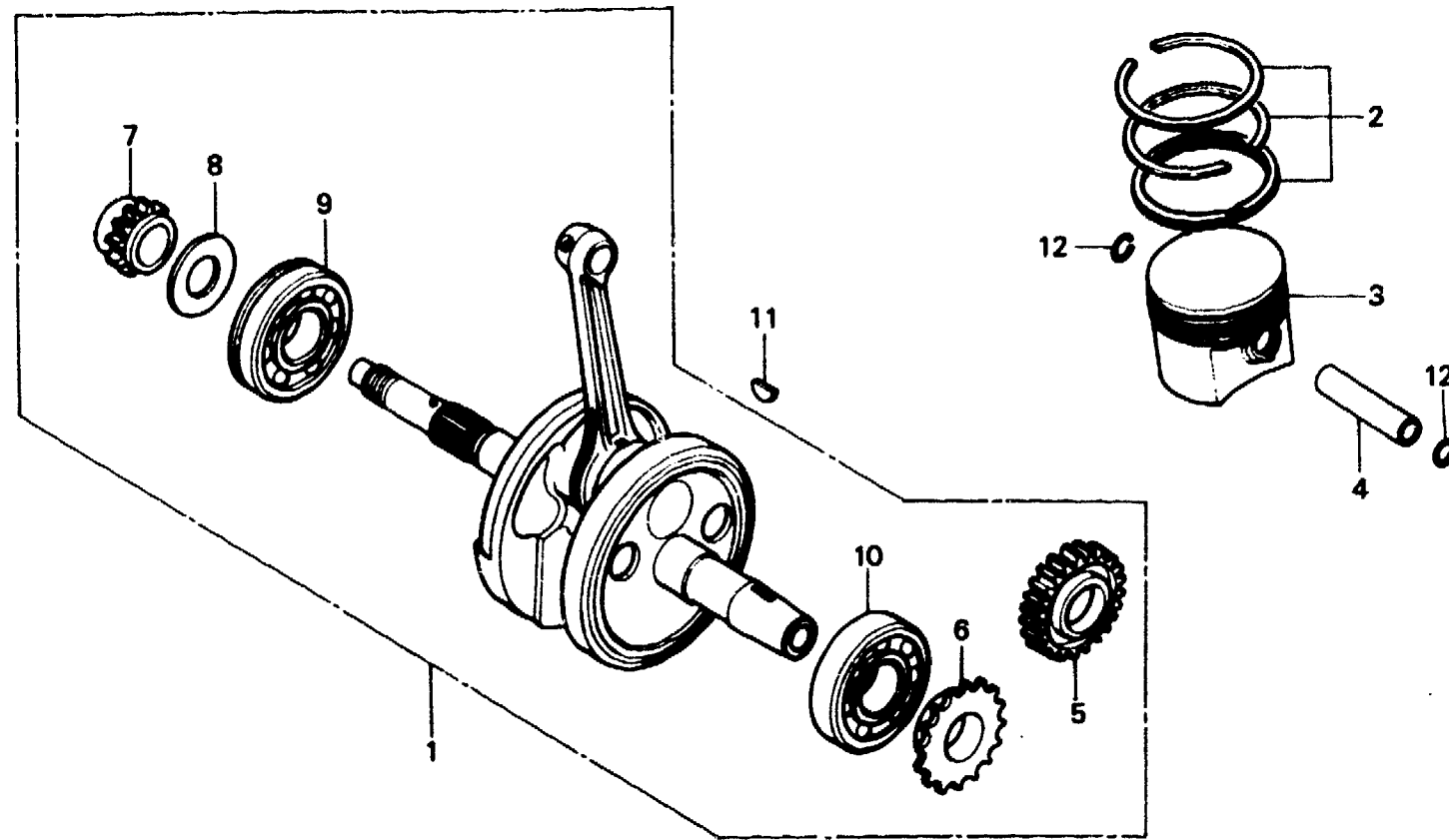
E-10

Piston • Crankshaft

Piston • Vilebrequin

Kolben • Kurbelwelle

Pistón • Cigüeñal



←BWD

BMA0-7

Service item	F.R.T.	Ref. No.	Part No.	Description	Reqd. No.					Serial No.	Area code
					S	Sz	SA	Ss	Rc		
CRANKSHAFT COMP.	*4.0	1	13000-428-000	CRANKSHAFT COMP.	1	1	1	1			
RING SET, PISTON	1.9		13000-KA6-000	CRANKSHAFT COMP.							1
PISTON	1.8	2	13011-428-003	RING SET, PISTON (STD)	1	1	1	1			B,CM,DK,DM,E,ED,F,F1 G,G1,G2,SA,SD,SW,U
BEARING, RADIAL BALL, 6306C3 (ADD 0.2 FOR EACH.)	*4.2		13011-428-005	RING SET, PISTON (STD)	1	1	1	1			B,CM,DK,DM,E,ED,F,F1 G,G1,G2,SA,SD,SW,U
			13021-428-003	RING SET, PISTON (0.25)	(1)	(1)	(1)	(1)			B,CM,DK,DM,E,ED,F,F1 G,G1,G2,SA,SD,SW,U
			13021-428-005	RING SET, PISTON (0.25)	(1)	(1)	(1)	(1)			B,CM,DK,DM,E,ED,F,F1 G,G1,G2,SA,SD,SW,U
			13031-428-003	RING SET, PISTON (0.50)	(1)	(1)	(1)	(1)			B,CM,DK,DM,E,ED,F,F1 G,G1,G2,SA,SD,SW,U
			13031-428-005	RING SET, PISTON (0.50)	(1)	(1)	(1)	(1)			B,CM,DK,DM,E,ED,F,F1 G,G1,G2,SA,SD,SW,U
			13011-428-780	RING SET, PISTON					1		1
			13011-471-003	RING SET, PISTON (STD. NIPPON)							1
			13021-471-003	RING SET, PISTON (0.25 NIPPON)						(1)	
			13031-471-003	RING SET, PISTON (0.50 NIPPON)						(1)	



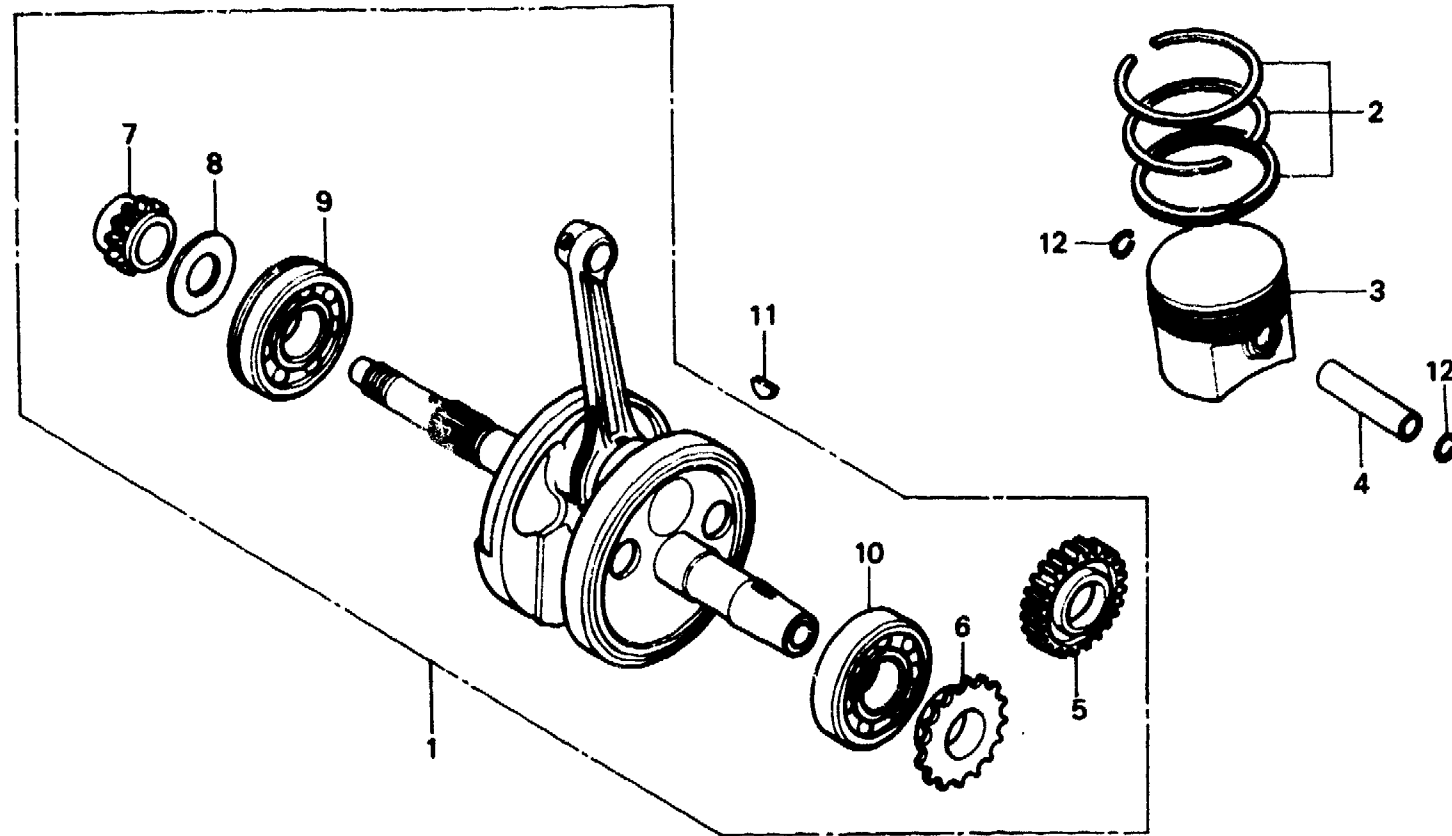
E-10

Piston • Crankshaft

Piston • Vilebrequin

Kolben • Kurbelwelle

Pistón • Cigüeñal



BMA0-7

Service item	F.R.T.	Ref. No.	Part No.	Description	Reqd. No. XL250					Serial No.	Area code
					S	Sz	SA	Ss	Rc		
		3	13101-428-003	PISTON (STD)	1					5014218	
			13102-428-003	PISTON (0.25)	(1)					5014218	
			13103-428-003	PISTON (0.50)	(1)					5014218	
			13101-428-013	PISTON (STD.)	1					5014219	B,DK,DM,E,ED,F1,G1,G2 SA,SD,SW,U CM,F2
			13102-428-013	PISTON (0.25)	(1)		1			5014219	B,DK,DM,E,ED,F1,G1,G2 SA,SD,SW,U CM,F2
			13103-428-013	PISTON (0.50)	(1)		(1)			5014219	B,DK,DM,E,ED,F1,G1,G2 SA,SD,SW,U CM,F2
			13101-428-013	PISTON (STD.)			(1)				B,DK,DM,E,ED,F1,G1,G2 SA,SD,SW,U CM,F2
			13102-428-013	PISTON (0.25)		1	1	1			CM
			13103-428-013	PISTON (0.50)		(1)	(1)	(1)			CM
			13101-428-781	PISTON		(1)	(1)	(1)			CM
			13101-471-003	PISTON (STD. HONDA)		1	1	1			F2
									1		B,CM,DK,DM,E,ED,F1,G1 G2,IT,SA,SD,SW,U

E 4

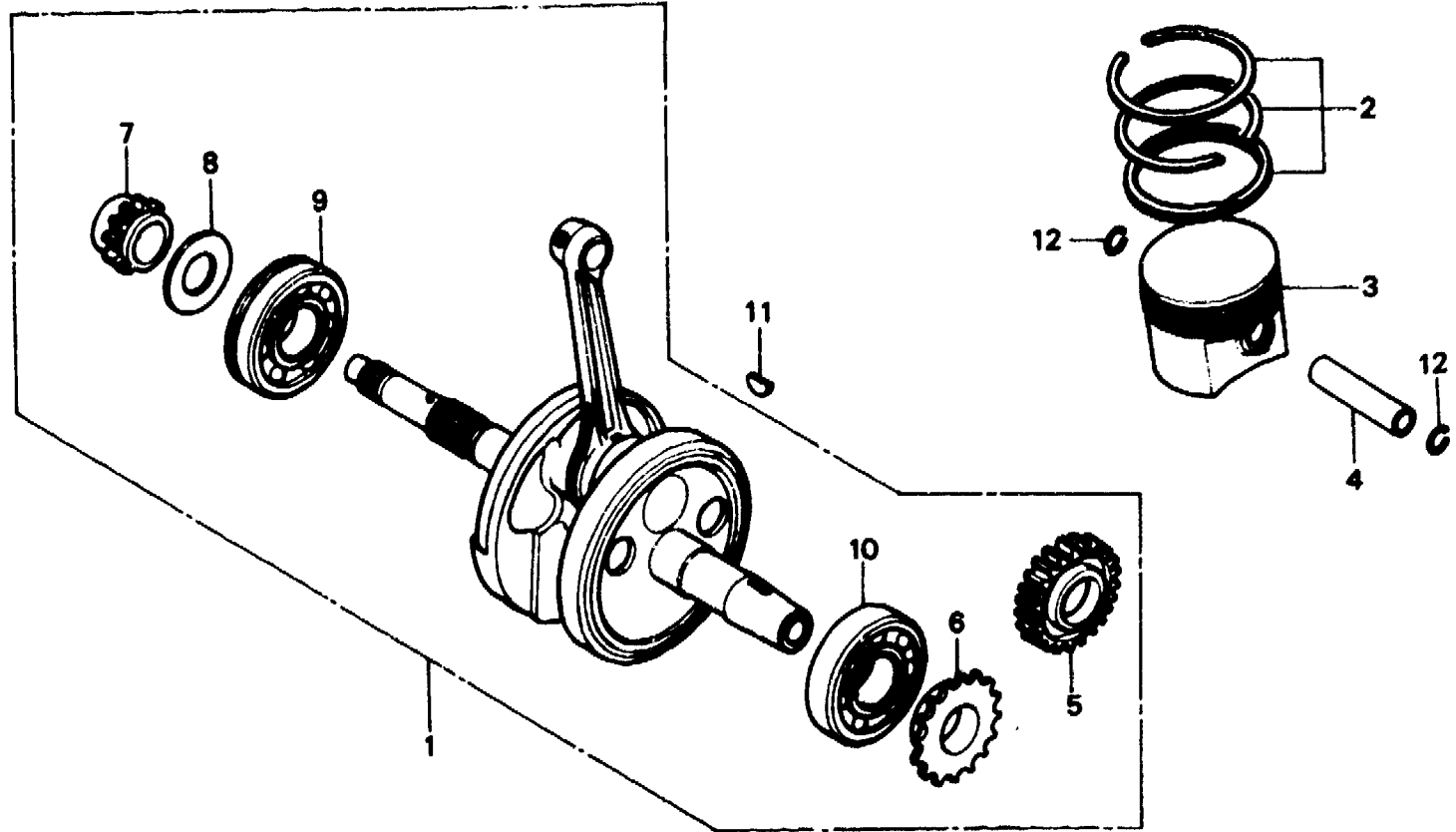
E-10

Piston • Crankshaft

Piston • Vilebrequin

Kolben • Kurbelwelle

Pistón • Cigüeñal



BMA0-7

Service item	F.R.T.	Ref. No.	Part No.	Description	Reqd. No.				Serial No.	Area code	
					S	S'	SA	Sc			Rc
			13102-471-003	PISTON (0.25 HONDA)						(1)	B,CM,DK,DM,E,ED,F1,G1 G2,IT,SA,SD,SW,U
			13103-471-003	PISTON (0.50 HONDA)						(1)	B,CM,DK,DM,E,ED,F1,G1 G2,IT,SA,SD,SW,U
		4	13111-428-000	PIN, PISTON	1	1	1	1	1		
		5	13417-KA6-300	GEAR, BALANCER DRIVE						1	
		6	13621-428-300	SPROCKET, BALANCER DRIVE (23T)	1	1	1	1			
		7	14312-428-300	SPROCKET, TIMING (19T)	1	1	1	1	1		
		8	90455-428-000	WASHER, 23MM	1	1	1	1	1		
		9	91001-428-003	BEARING, RADIAL BALL, 6306C3	1	1	1	1			1
			91001-471-003	BEARING, RADIAL BALL, 6306 C3 (NACHI)							1
			91001-471-008	BEARING, RADIAL BALL, 6306 C3 (TOYO)							1
		10	91002-428-003	BEARING, RADIAL BALL, 6306C3	1	1	1	1			

1982.01.10

E

E4

E 5

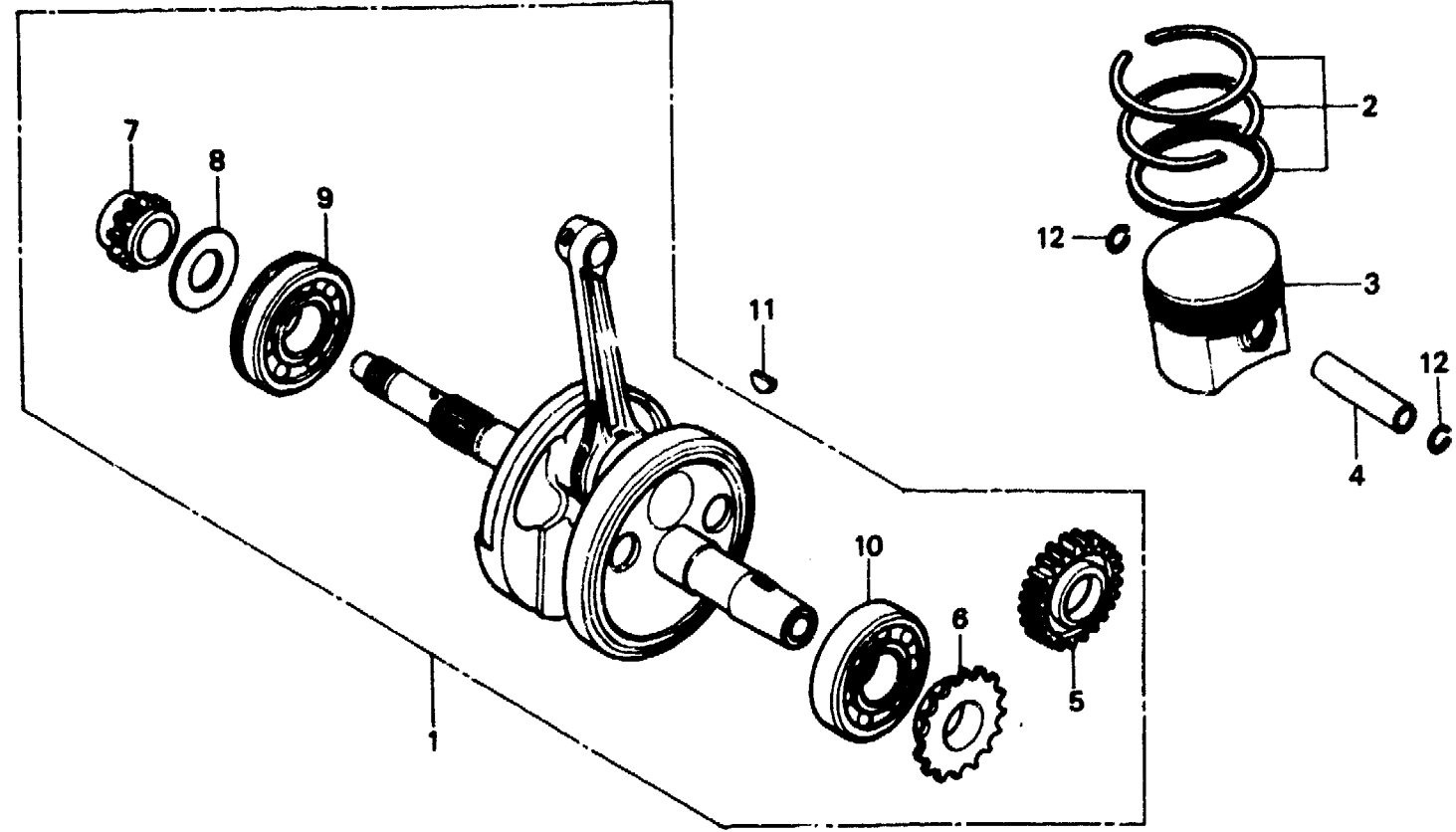
E-10

Piston • Crankshaft

Piston • Vilebrequin

Kolben • Kurbelwelle

Pistón • Cigüeñal



BMA0-7

Service item	F.R.T.	Ref. No.	Part No.	Description	Reqd. No. XL250					Serial No.	Area code
					S	Sz	SA	Sa	Rc		
		10	91002-471-003	BEARING, RADIAL BALL, 6306 C3 (NACHI)					1		
			91002-471-008	BEARING, RADIAL BALL, 6306 C3 (TOYO)					1		
		11	94401-25180	KEY, WOODRUFF, 25X18	1	1	1				
			13331-357-000	KEY, SPECIAL WOODRUFF, 25X18				1	1		
		12	94601-19000	CLIP, PISTON PIN, 19MM	2	2	2	2	2		

1982.01.10

E

E5



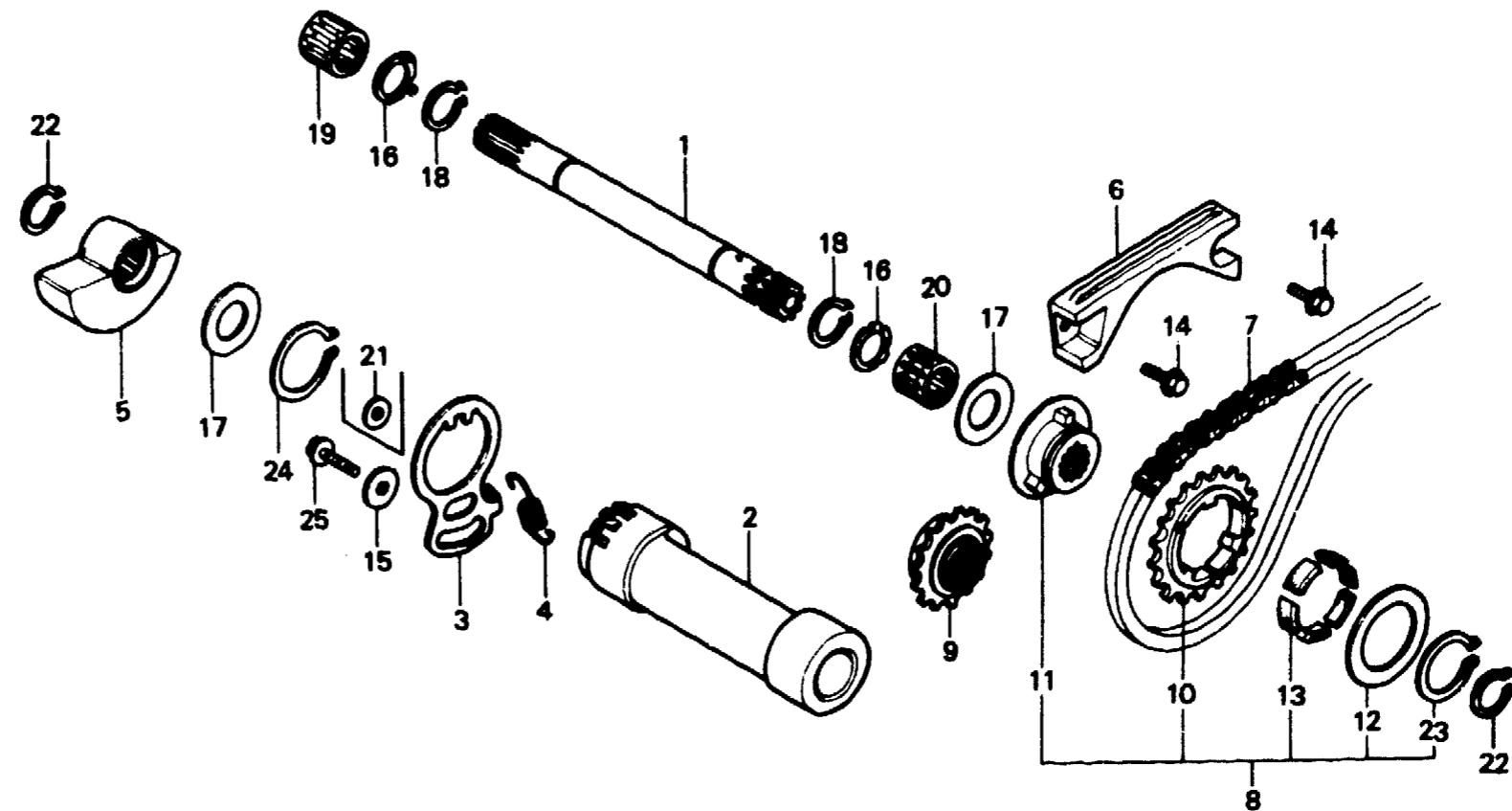
E-11

Balancer
(XL250S·Sz·SA·SB)

Balancier
(XL250S·Sz·SA·SB)

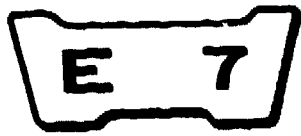
Ausgleicher
(XL250S·Sz·SA·SB)

Balancador
(XL250S·Sz·SA·SB)



B428-12

Service item	F.R.T.	Ref. No.	Part No.	Description	Reqd. No. XL250					Serial No.	Area code
					S	Sz	SA	Sb	Pc		
SHAFT COMP., BALANCER	1.5	1	13411-428-000	SHAFT COMP., BALANCER	1					5024156	DK,DM,E,ED,F,G,SA,SW U
INC. RELATIVE PART					1	1					CM
WEIGHT, FR. BALANCER	0.7						1			5200130	CM
SLIPPER, BALANCER CHAIN	0.5								5024157		DK,DM,E,ED,F,G,SA,SW U
CHAIN, BALANCER	*3.3		13411-429-000	SHAFT COMP., BALANCER	1					5200131	CM
SPROCKET ASSY., FR. BALANCER	0.8						1	1			B,DK,DM,E,ED,F1,F2,G1 G2,SA,SD,SW,U CM
INC. RELATIVE PART											
		2	13412-428-020	HOLDER, BALANCER SHAFT	1	1	1	1			
		3	13413-428-020	FLANGE, BALANCER HOLDER	1	1	1	1			
		4	13414-428-000	SPRING, CHAIN ADJUSTING	1	1	1	1			
		5	13421-428-000	WEIGHT, FR. BALANCER	1	1	1	1			
		6	13430-428-000	SLIPPER, BALANCER CHAIN	1	1	1	1			
		7	13440-428-003	CHAIN, BALANCER	1	1	1	1			
		8	13610-428-000	SPROCKET ASSY., FR. BALANCER	1					5023766	DK,DM,E,ED,F,G,SA,SW U CM
					1	1					



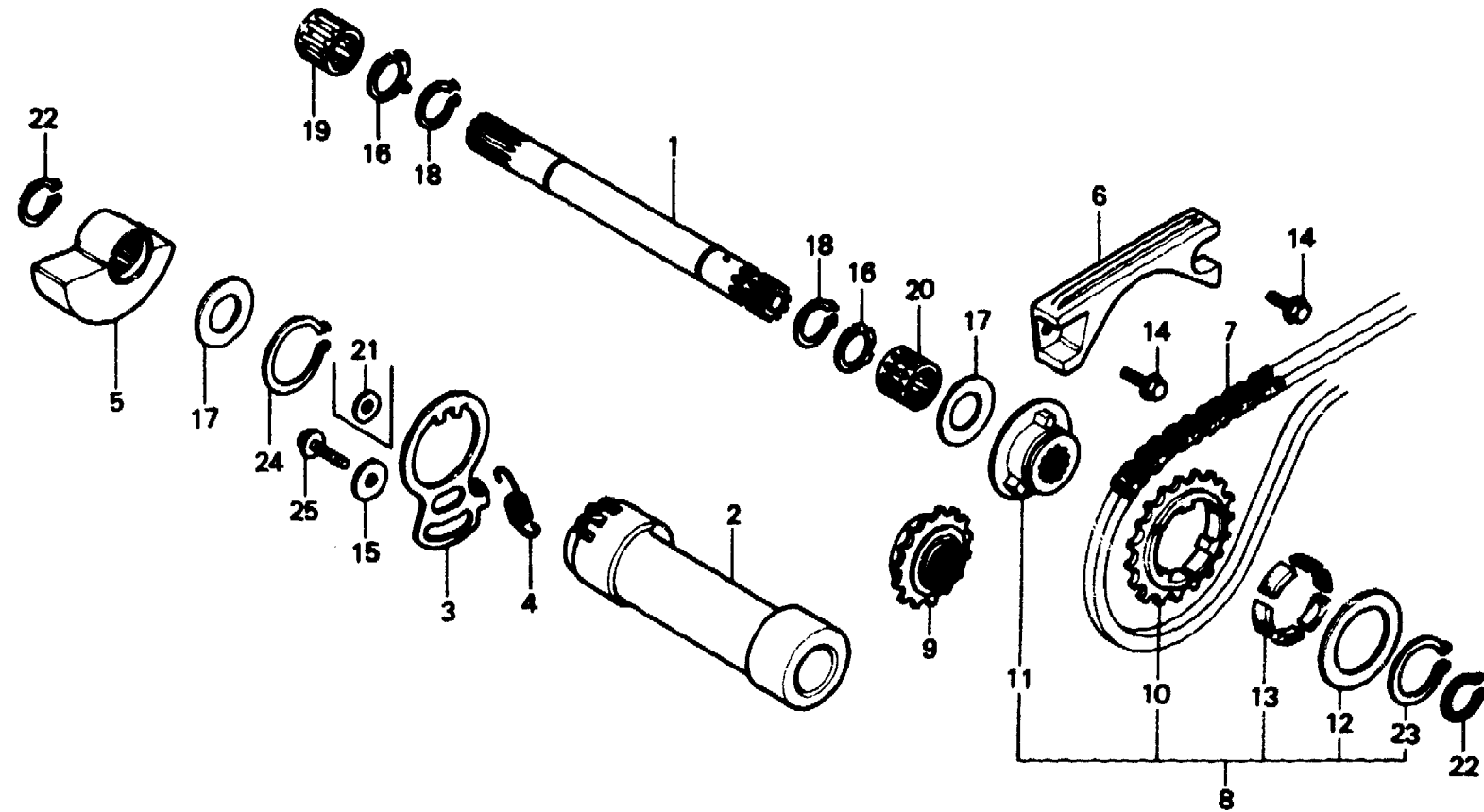
E-11

Balancer
(XL250S·SZ·SA·SB)

Balancier
(XL250S·SZ·SA·SB)

Ausgleicher
(XL250S·SZ·SA·SB)

Balancador
(XL250S·SZ·SA·SB)



B428-12

Service item	F.R.T.	Ref. No.	Part No.	Description	Reqd. No.					Serial No.	Area code
					S	Sz	SA	Sa	Rc		
		9	13610-428-010	SPROCKET, FR. BALANCER	1					5023767	DK,DM,E,ED,F,G,SA,SW U
		10	13611-428-003	SPROCKET, BALANCER DRIVEN (23T)	1		1	1		5023766	DK,DM,E,ED,F,G,SA,SW U CM
		11	13612-428-300	BASE, FR. BALANCER SPROCKET	1					5023766	DK,DM,E,ED,F,G,SA,SW U CM
		12	13613-428-300	PLATE, SIDE	1					5023766	DK,DM,E,ED,F,G,SA,SW U CM
		13	13614-428-300	RUBBER, DAMPER	6		1			5023766	DK,DM,E,ED,F,G,SA,SW U CM
		14	90004-415-000	BOLT, FLANGE, 6X14	6	6					
			96000-06014-00	BOLT, FLANGE, 6X14	2	2					
		15	90436-611-000	WASHER, SPECIAL, 22X8.5X2	2	2	2	2		5023767	DK,DM,E,ED,F,G,SA,SW U
					1						
							1	1			

E 8

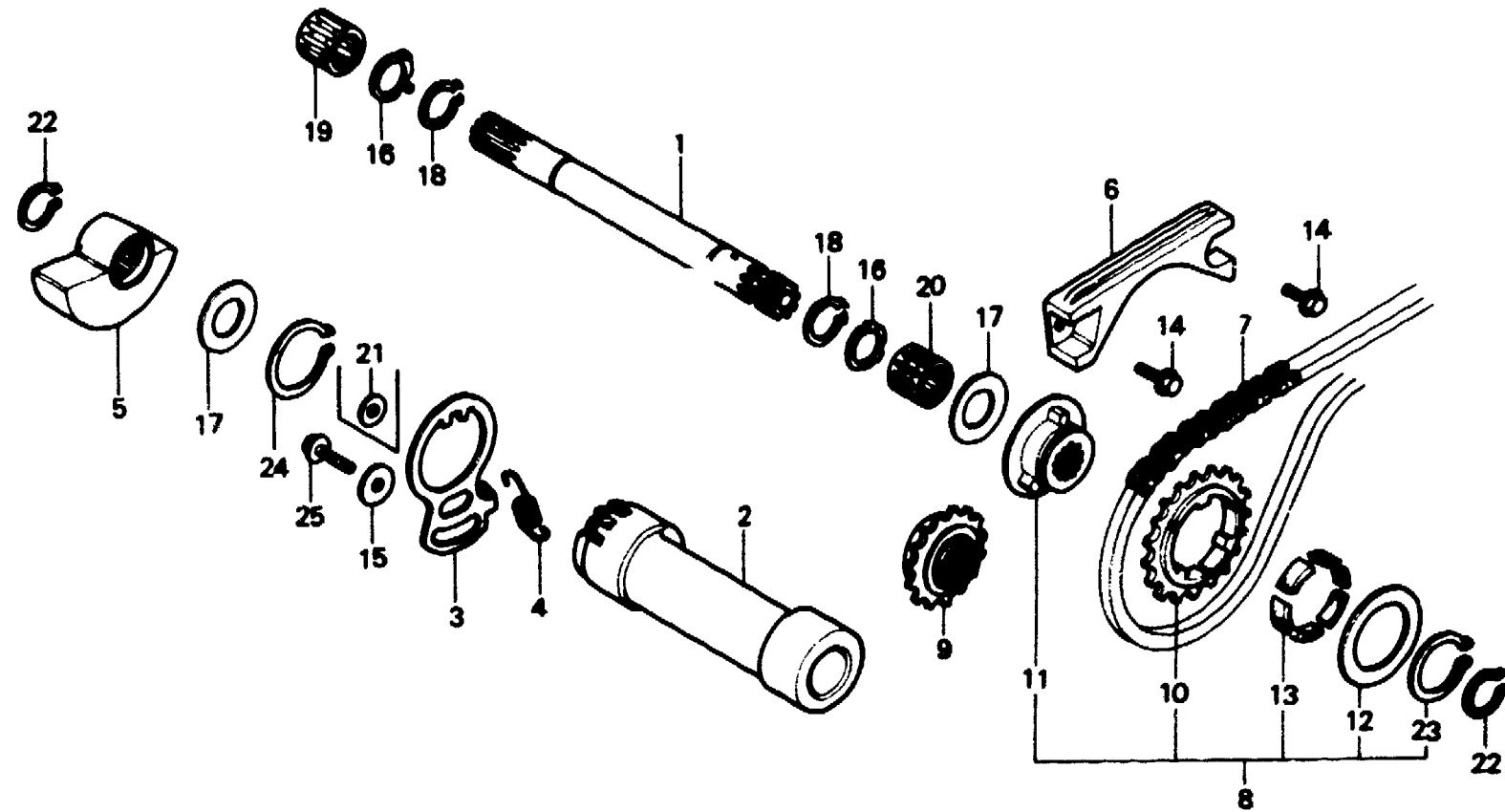
E-11

Balancer
(XL250S·SZ·SA·SB)

Balancier
(XL250S·SZ·SA·SB)

Ausgleicher
(XL250S·SZ·SA·SB)

Balancador
(XL250S·SZ·SA·SB)



B428-12

Service item	F.R.T.	Ref. No.	Part No.	Description	S	Reqd. No. XL250				Serial No.	Area code
						Sz	SA	SA	Rc		
		16	90456-428-000	WASHER, SPECIAL, 20MM	2	2	2	2			
		17	90458-292-000	WASHER, THRUST, 20MM	2	2	2	2			
		18	90605-200-000	SET RING, 20MM	2	2	2	2			
		19	91011-428-008	BEARING, NEEDLE, 20X26X20	1	1	1	1			
		20	91012-428-008	BEARING, NEEDLE, 20X26X17	1	1	1	1			
		21	94101-08000	WASHER, PLAIN, 8MM	1						CM
					1					5003225	DK,DM,E,ED,F,G,SA,SW
										5108943	U
		22	94510-20000	CIRCLIP, EXTERNAL, 20	2	2	2	2			
		23	94510-32000	CIRCLIP, EXTERNAL, 32	1					5023766	DK,DM,E,ED,F,G,SA,SW
											U
											CM
		24	94510-38000	CIRCLIP, EXTERNAL, 38	1	1	1	1			
		25	95700-08020-00	BOLT, FLANGE, 8X20	1						CM
					1					5003225	DK,DM,E,ED,F,G,SA,SW
											U
										5108943	

1982.01.10

E

E8



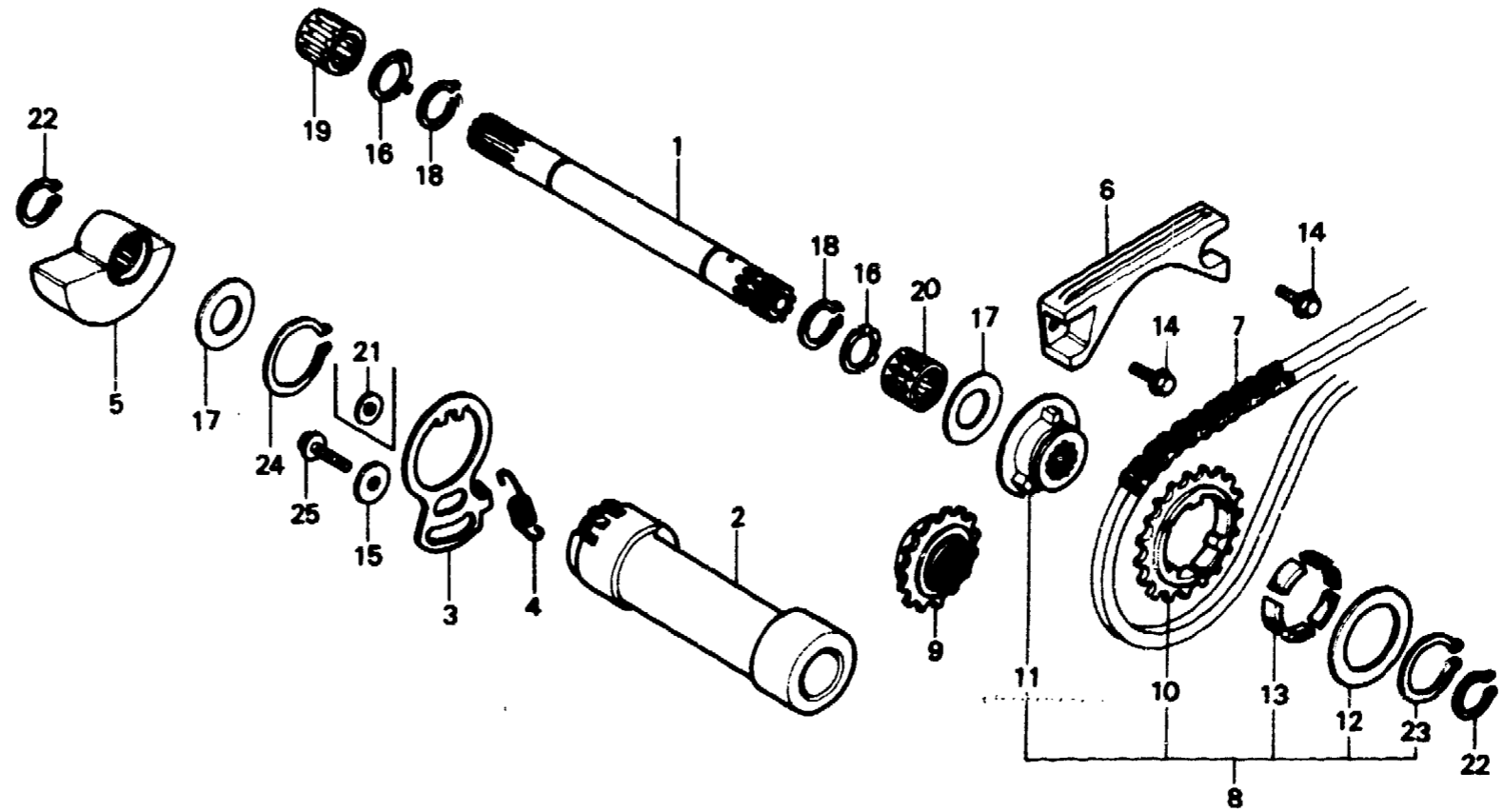
E-11

Balancer
(XL250S·SZ·SA·SB)

Balancier
(XL250S·SZ·SA·SB)

Ausgleicher
(XL250S·SZ·SA·SB)

Balancador
(XL250S·SZ·SA·SB)



B428-12

Service item	F.R.T.	Ref. No.	Part No.	Description	Reqd. No.					Serial No.	Area code
					S	Sz	SA	SB	Rc		
			93491-08020-08	BGLT-WASHER, 8X20	1					5003226 5023766	DK,DM,E,ED,F,G,SA,SW U
			95700-C8020-00	BOLT, FLANGE, 8X20	1			1		5108944 5023767	DK,DM,E,ED,F,G,SA,SW U
								1	1		

E 10

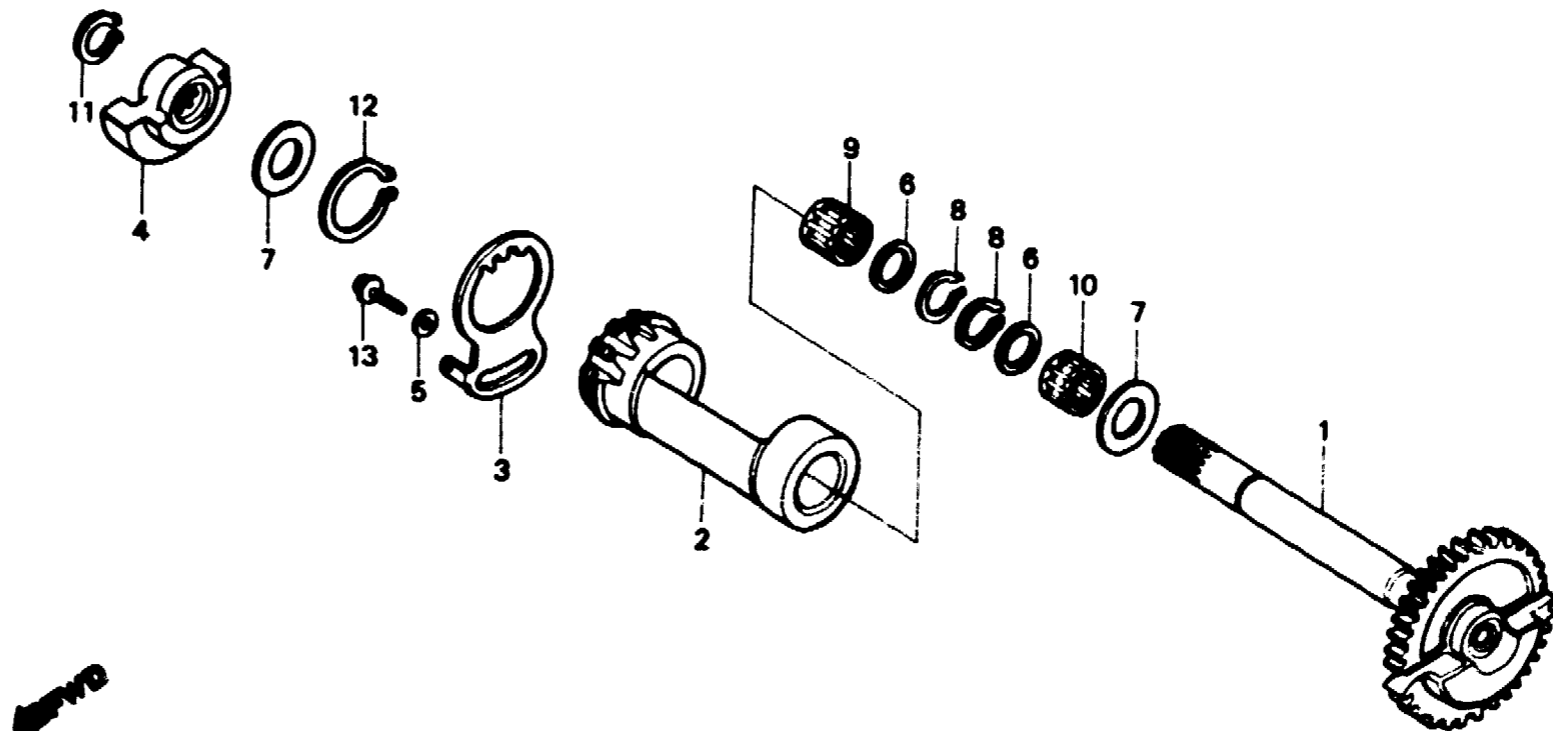
E-11-1

**Balancer
(XL250Rc)**

**Balancier
(XL250Rc)**

**Ausgleicher
(XL250Rc)**

**Balancador
(XL250Rc)**



8473-9

Service item	F.R.T.	Ref. No.	Part No.	Description	Reqd. No.				Serial No.	Area code
					Sz	SA	So	Rc		
GEAR COMP., BALANCER DRIVEN	1.2	1	13410-473-000	GEAR COMP., BALANCER DRIVEN						
HOLDER, BALANCER SHAFT		2	13412-KA6-000	HOLDER, BALANCER SHAFT						1
BEARING, NEEDLE, 20X26X20 (ONE OR ALL)		3	13413-KA6-000	FLANGE, BALANCER HOLDER						1
FLANGE, BALANCER HOLDER	0.7	4	13421-KA6-000	WEIGHT, FR. BALANCER						1
WEIGHT, FR. BALANCER		5	90436-611-000	WASHER, SPECIAL, 22X6.5X2						1
		6	90456-473-000	WASHER, 20MM						2
		7	90458-292-000	WASHER, THRUST, 20MM						2
		8	90605-200-000	SET RING, 20MM						2
		9	91011-473-000	BEARING, NEEDLE, 20X26X20						1
		10	91012-473-000	BEARING, NEEDLE, 20X26X17						1
		11	94510-20000	CIRCLIP, EXTERNAL, 20						1
		12	94510-38000	CIRCLIP, EXTERNAL, 38						1
		13	95700-08020-00	BOLT, FLANGE, 8X20						1

E 11

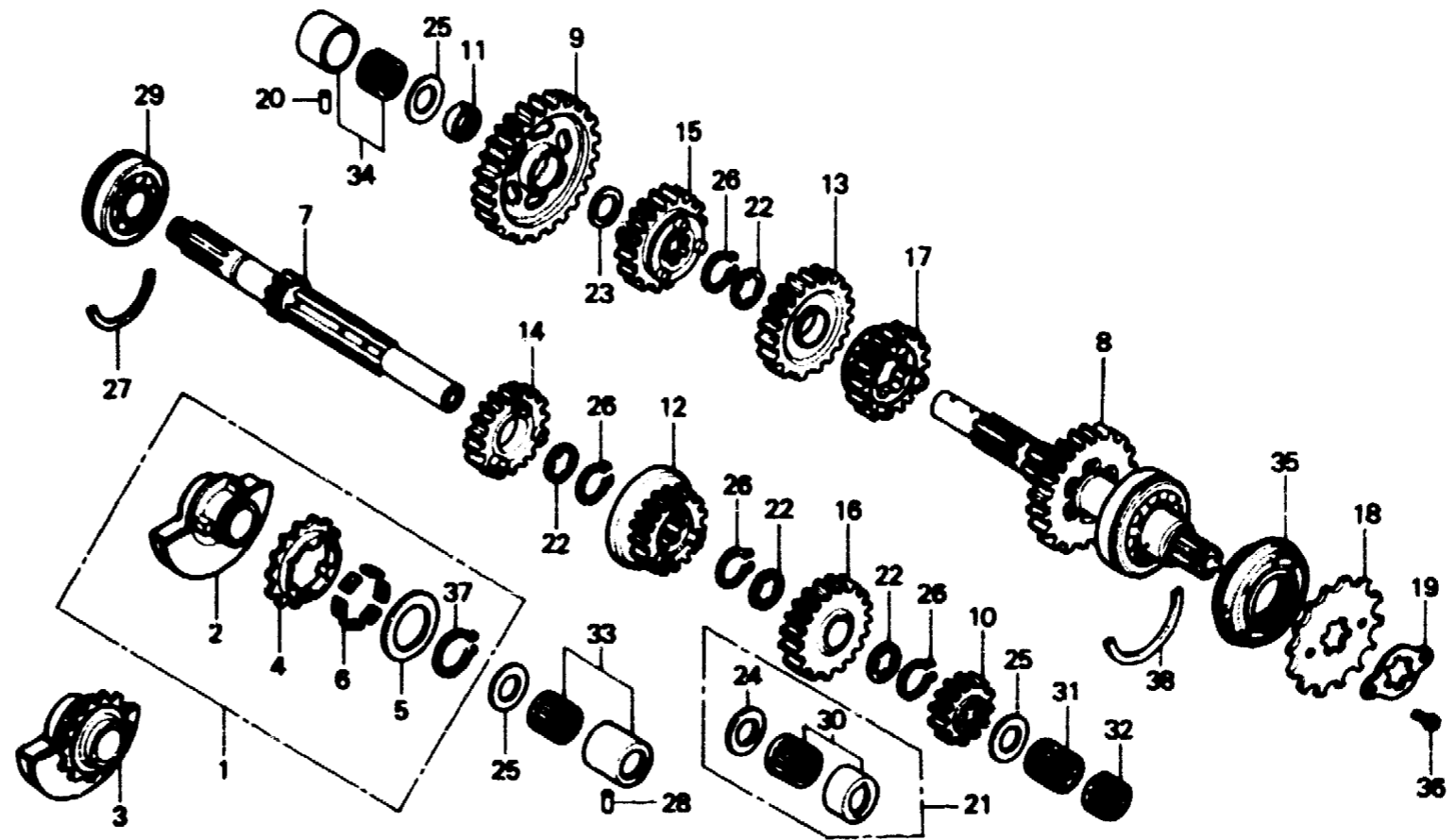
E-12

Transmission
(XL250S·Sz·SA·SB)

Transmission
(XL250S·Sz·SA·SB)

Getriebe
(XL250S·Sz·SA·SB)

Transmisión
(XL250S·Sz·SA·SB)



B428-13A

Service item	F.R.T.	Ref. No.	Part No.	Description	Reqd. No.				Serial No.	Area code
					S	Sz	SA	Sa		
BALANCER ASSY., RR. INC. RELATIVE PART MAINSHAFT, TRANSMISSION	*3.3	1	13410-428-000	BALANCER ASSY., RR.	1				5023766	DK,DM,E,ED,F,G,SA,SW U
INC. RELATIVE PART COUNTERSHAFT COMP.		2	13420-428-300	WEIGHT, RR. BALANCER	1	1			5023766	DK,DM,E,ED,F,G,SA,SW U
INC. RELATIVE PART (WHEN SERVICING COMP., UNIT, F.R.T. IS 3.5.)		3	13420-428-310	WEIGHT, RR. BALANCER	1	1			5023767	CM DK,DM,E,ED,F,G,SA,SW U
SPROCKET, DRIVE	0.2	4	13611-428-003	SPROCKET, BALANCER DRIVEN (23T)	1		1	1	5023766	DK,DM,E,ED,F,G,SA,SW U
		5	13613-428-300	PLATE, SIDE	1	1			5023766	CM DK,DM,E,ED,F,G,SA,SW U
		6	13614-428-300	RUBBER, DAMPER	6				5023766	DK,DM,E,ED,F,G,SA,SW U
		7	23211-428-000	MAINSHAFT, TRANSMISSION (15T)	6	6			5017072 5109218	CM

E 12

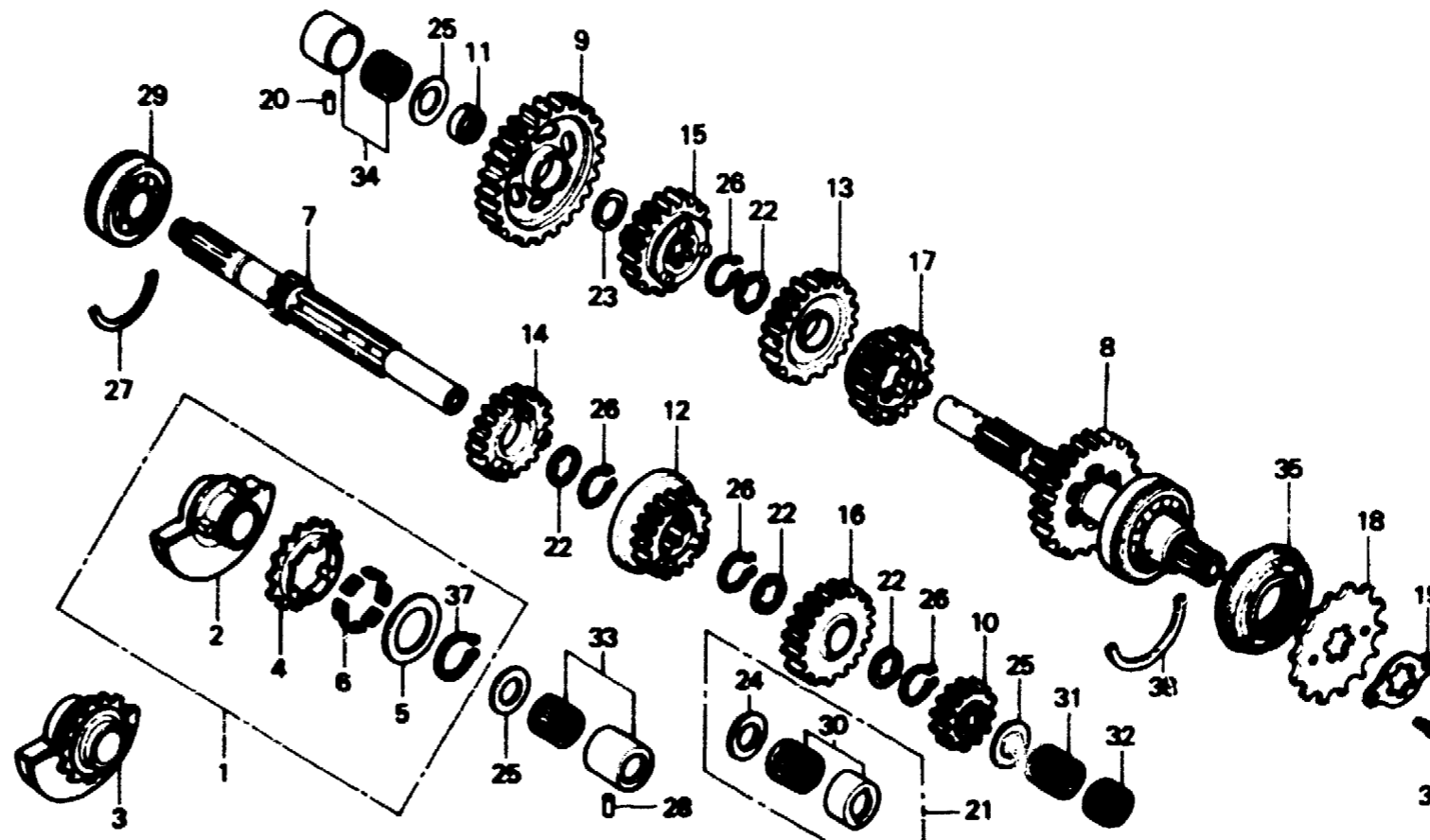
E-12

**Transmission
(XL250S·SZ·SA·SB)**

**Transmission
(XL250S·SZ·SA·SB)**

**Getriebe
(XL250S·SZ·SA·SB)**

**Transmisión
(XL250S·SZ·SA·SB)**



B428-13A

Service item	F.R.T.	Ref. No.	Part No.	Description	Reqd. No.					Serial No.	Area code
					S	Sz	SA	SB	Pc		
		7	23211-428-010	MAINSHAFT, TRANSMISSION	1					5017075 5103219	
			23210-471-010	MAINSHAFT COMP., TRANSMISSION				1			
		8	23220-428-010	COUNTERSHAFT COMP. (37T)	1	1	1	1			
		9	23411-428-000	GEAR, COUNTERSHAFT LOW (42T)	1	1	1	1			
		10	23421-428-000	GEAR, MAINSHAFT SECOND (20T)	1	1	1	1			
		11	23422-428-000	BUSH, 20MM	1	1	1	1			
		12	23441-428-000	GEAR, MAINSHAFT THIRD (24T)	1	1	1	1			
		13	23451-428-000	GEAR, COUNTERSHAFT THIRD (39T)	1	1	1	1			
		14	23461-428-000	GEAR, MAINSHAFT FOURTH (27T)	1	1	1	1			
		15	23471-428-000	GEAR, COUNTERSHAFT FOURTH (30T)	1	1	1	1			

E 13

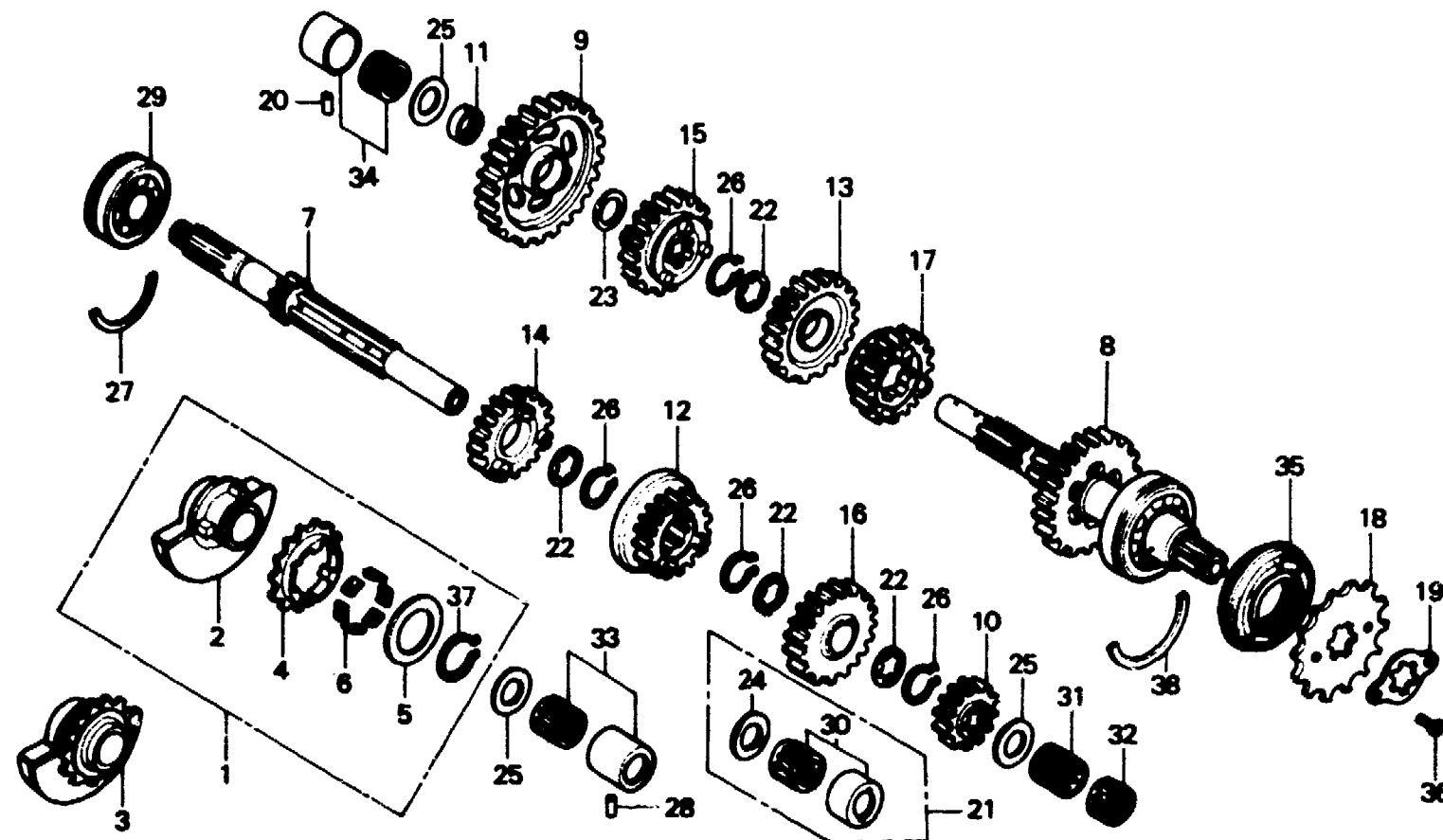
E-12

**Transmission
(XL250S·SZ·SA·SB)**

**Transmission
(XL250S·SZ·SA·SB)**

**Getriebe
(XL250S·SZ·SA·SB)**

**Transmisión
(XL250S·SZ·SA·SB)**



B428-13A

Service item	F.R.T.	Ref. No.	Part No.	Description	Reqd. No.				Serial No.	Area code
					S	Sz	SA	Se Rc		
		16	23481-428-000	GEAR, MAINSHAFT TOP (30T)	1	1	1	1		
		17	23491-428-000	GEAR, COUNTERSHAFT TOP (27T)	1	1	1			
			23491-471-000	GEAR, COUNTERSHAFT TOP (27T)				1		
		18	23801-428-000	SPROCKET, DRIVE (14T)	1	1	1	1		
		19	23811-292-000	PLATE, DRIVE SPROCKET FIXING	1	1	1	1		
		20	24261-283-000	PIN, GEARSHIFT FORK GUIDE	1	1	1	1		
		21	90450-428-305	BEARING SET, NEEDLE	1				5024246	DK,DM,E,ED,F,G,SA,SW U
		22	90451-371-000	WASHER, THRUST, 25X31	4				5017072	
			90451-413-000	WASHER, THRUST, 25MM	4				5017073	
					4				5103219	
		23	90454-428-000	WASHER, THRUST, 20MM	1	1	1	1		

E 14

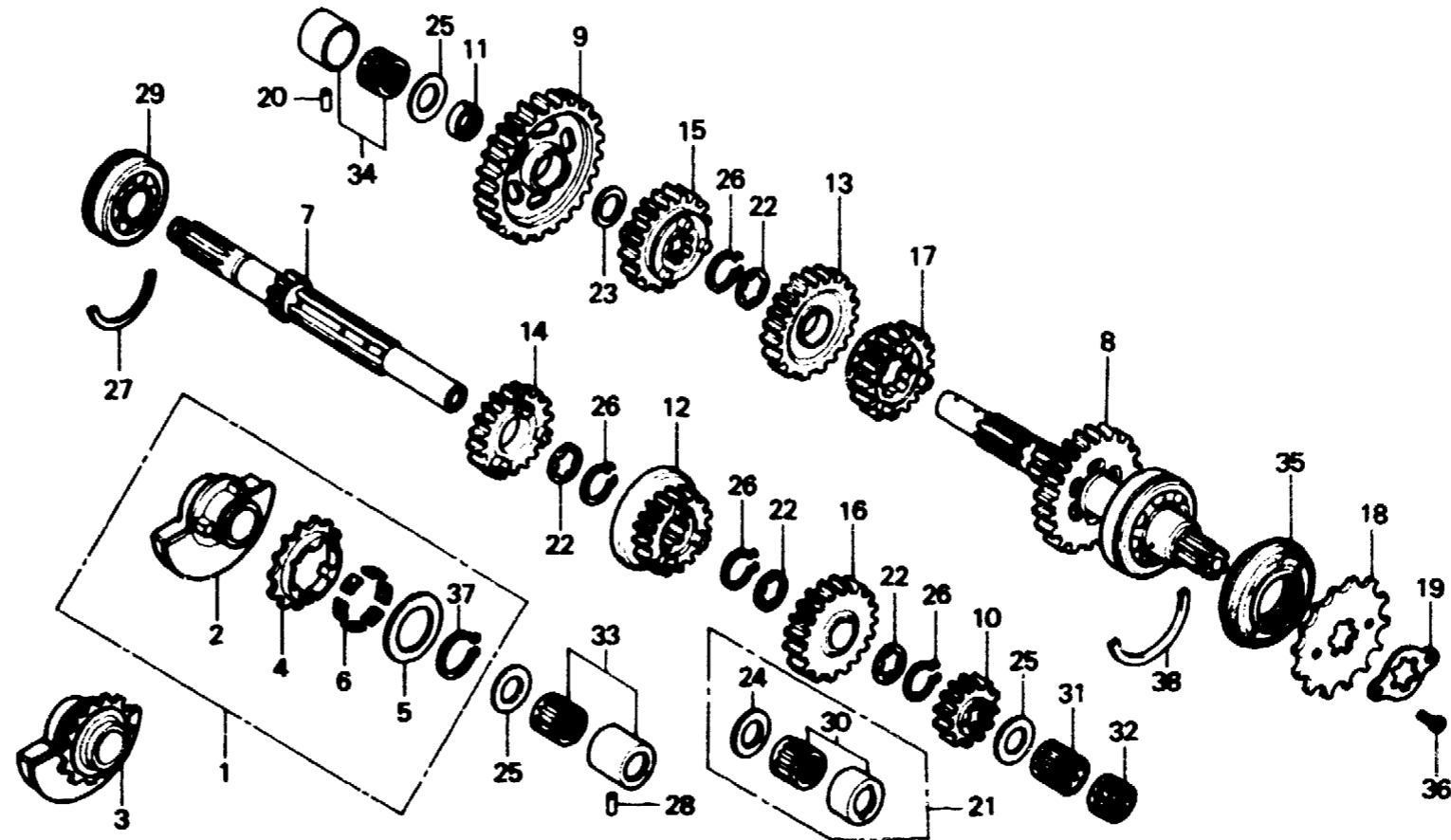
E-12

**Transmission
(XL250S·SZ·SA·SB)**

**Transmission
(XL250S·SZ·SA·SB)**

**Getriebe
(XL250S·SZ·SA·SB)**

**Transmisión
(XL250S·SZ·SA·SB)**



B428-13A

Service item	F.R.T.	Ref. No.	Part No.	Description	Reqd. No				Serial No.	Area code
					S	Sz	SA	Sa		
		24	90454-429-000	SPACER, 20MM	1				5024247	DK,DM,E,ED,F,G,SA,SW U
		25	90458-292-000	WASHER, THRUST, 20MM	3	3	3	3		
		26	90601-107-000	CIRCLIP, 25MM	4	4	4	4		
		27	90601-393-000	SET RING, 56MM	1	1	1	1		
		28	90705-428-010	PIN, BEARING SETTING	1	1	1	1		
		29	91007-393-003	BEARING, BALL, 63/22N (NACHI)	1	1	1	1		
		30	91011-428-008	BEARING, NEEDLE, 20X26X20	1				5024247	DK,DM,E,ED,F,G,SA,SW U
							1	1		
		31	91012-428-008	BEARING, NEEDLE, 20X26X17	1				5024246	DK,DM,E,ED,F,G,SA,SW U CM
		32	91014-428-008	BEARING, NEEDLE, 20X26X9	1	1			5024246	DK,DM,E,ED,F,G,SA,SW U CM
					1	1				

1982.01.10

E

E14

E 15

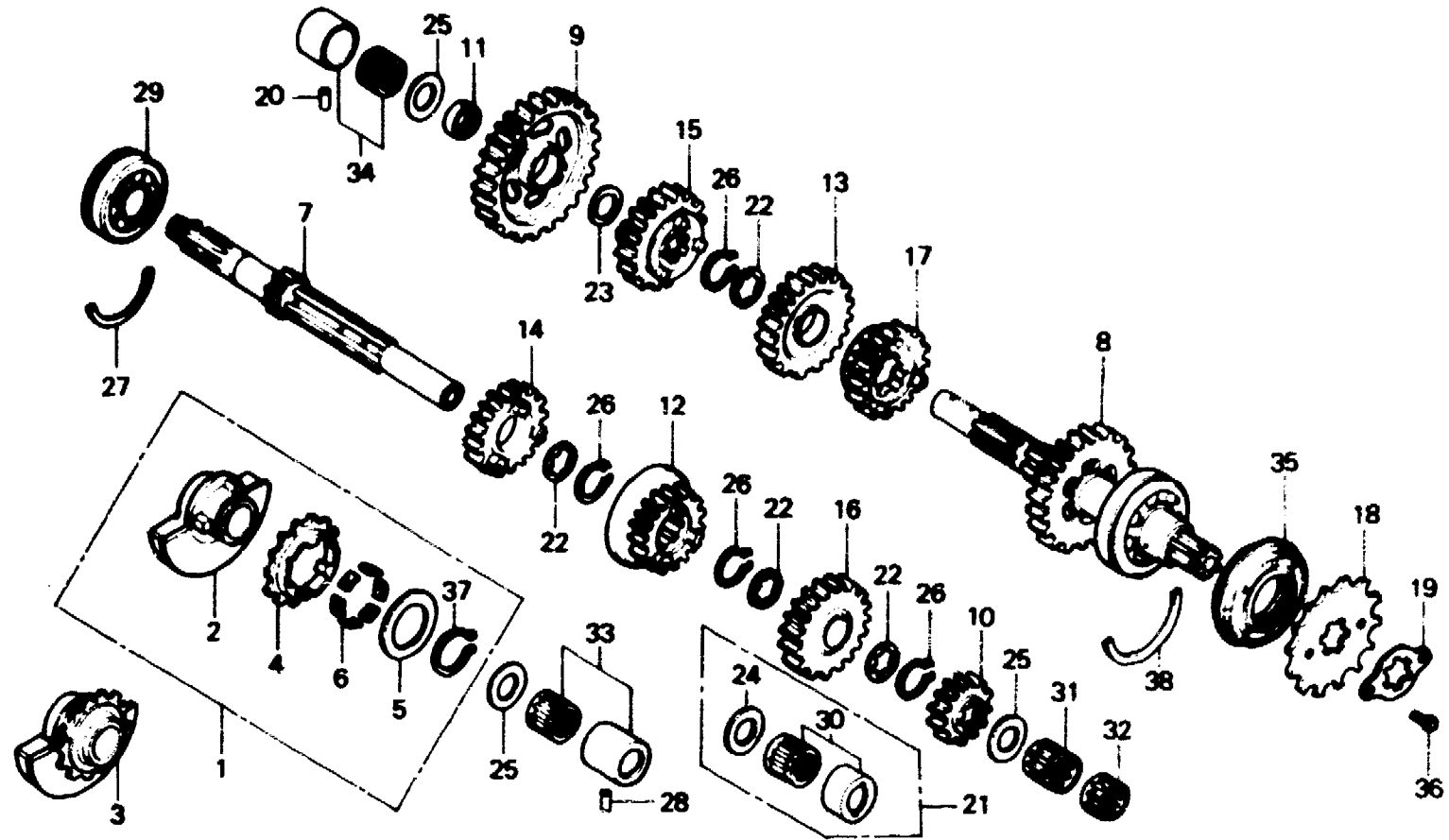
E-12

Transmission
(XL250S·SZ·SA·SB)

Transmission
(XL250S·SZ·SA·SB)

Getriebe
(XL250S·SZ·SA·SB)

Transmisión
(XL250S·SZ·SA·SB)



B428-13A

Service item	F.R.T.	Ref. No.	Part No.	Description	Reqd. No				Serial No.	Area code
					S	Sz	SA	Sb		
		33	91020-428-006	BEARING, NEEDLE, 20MM	1	1	1	1		
		34	91022-415-003	BEARING, NEEDLE, 20MM	1	1	1	1		
		35	91206-428-005	OIL SEAL, 34X62X14	1	1	1	1		
		36	92000-06010	BOLT, HEX., 6X10	2	2	2	2		
		37	94510-32000	CIRCLIP, EXTERNAL, 32	1				5023766	DK,DM,E,ED,F,G,SA,SW U CM
		38	95015-26200	SET RING, 620	1	1	1	1		

1982.01.10

E

E15

E 16

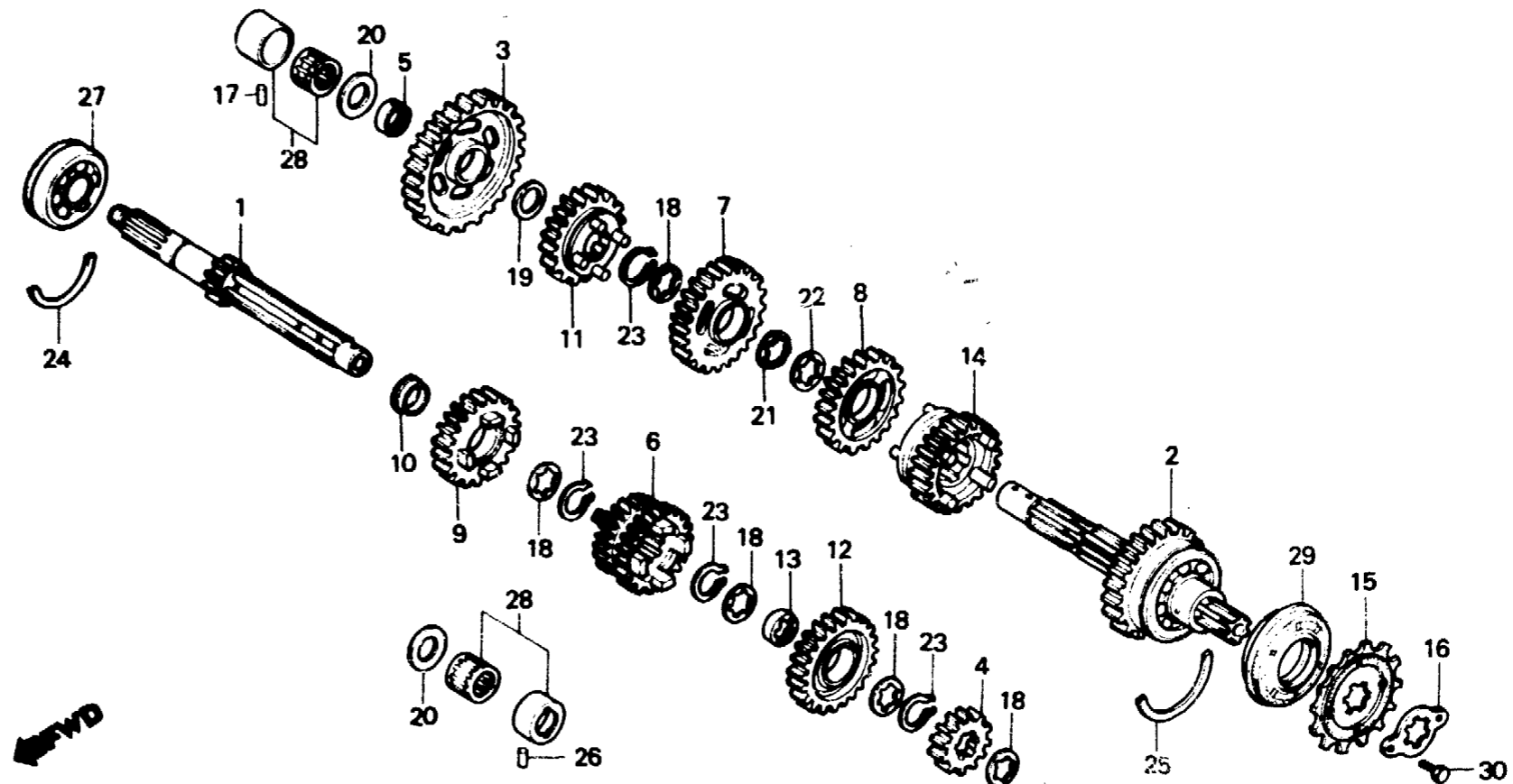
E-12-1

Transmission
(XL250Rc)

Transmission
(XL250Rc)

Getriebe
(XL250Rc)

Transmisión
(XL250Rc)



B473-10

Service item	F.R.T.	Ref. No.	Part No.	Description	Reqd. No.				Serial No.	Area code
					S	Sz	SA	Sb		
MAINSHAFT COMP., TRANSMISSION INC. RELATIVE PART COUNTERSHAFT COMP., TRANSMISSION INC. RELATIVE PART (WHEN SERVICING COMP., UNIT, F.R.T. IS 3.5.) SPROCKET, DRIVE	*3.3	1	23211-KB7-000	MAINSHAFT COMP., TRANSMISSION					1	
		2	23220-KA6-000	COUNTERSHAFT COMP., TRANSMISSION (38T)					1	
	3	23411-KB7-000	GEAR, COUNTERSHAFT LOW (43T)					1		
	4	23421-KA6-000	GEAR, MAINSHAFT SECOND (18T)					1		
	5	23422-428-000	BUSH, 20MM					1		
	0.2	6	23441-KB7-000	GEAR, MAINSHAFT THIRD & FOURTH (25T, 22T)					1	
	7	23451-KB7-000	GEAR, COUNTERSHAFT THIRD (35T)					1		
	8	23461-KA6-000	GEAR, COUNTERSHAFT FOURTH (32T)					1		
	9	23471-KB7-000	GEAR, MAINSHAFT FIFTH (27T)					1		
	10	23472-473-000	BUSH, MAINSHAFT FIFTH GEAR					1		



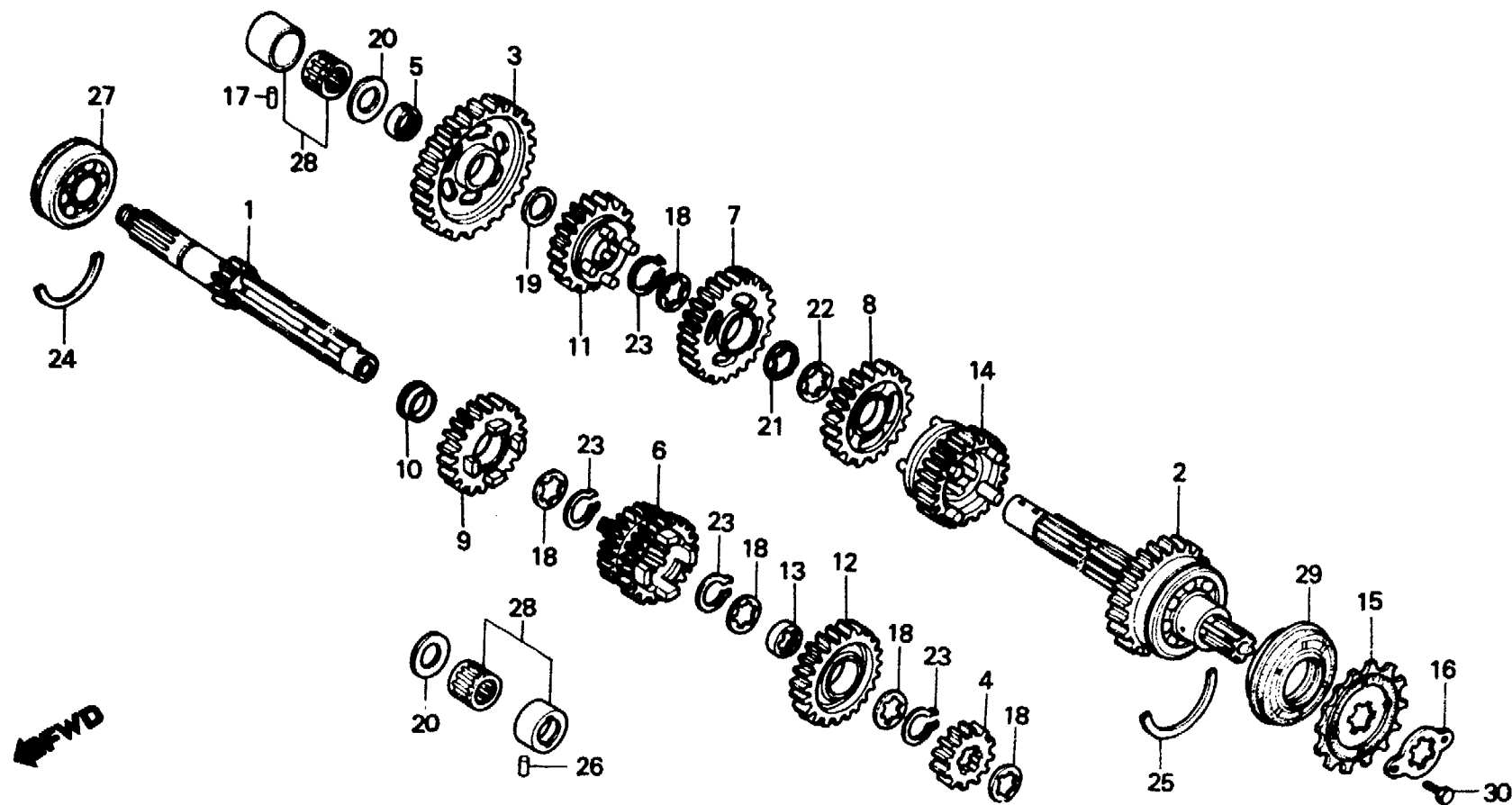
E-12-1

**Transmission
(XL250Rc)**

**Transmission
(XL250Rc)**

**Getriebe
(XL250Rc)**

**Transmisión
(XL250Rc)**



B473-10

Service item	F.R.T.	Ref. No.	Part No.	Description	Reqd. No.					Serial No.	Area code
					S	Sz	SA	Sb	Rc		
		11	23481-KB7-000	GEAR, COUNTERSHAFT FIFTH (29T)					1		
		12	23491-KB7-000	GEAR, MAINSHAFT SIXTH (29T)					1		
		13	23492-KB7-000	BUSH, SPLINE					2		
		14	23501-KB7-000	GEAR, COUNTERSHAFT SIXTH (27T)					1		
		15	23801-429-01	SPROCKET, DRIVE (14T)					1		
		16	23811-292-000	PLATE, DRIVE SPROCKET FIXING					1		
		17	24261-283-000	PIN, GEARSHIFT FORK GUIDE					1		
		18	90451-413-000	WASHER, THRUST, 25MM					5		
		19	90454-428-000	WASHER, THRUST, 20MM					1		
		20	90458-292-000	WASHER, THRUST, 20MM					2		
		21	90461-286-000	WASHER B, THRUST, 25MM					1		
		22	90462-323-000	WASHER, LOCK, 25MM					1		
		23	90601-107-000	CIRCLIP, 25MM					4		
		24	90601-393-000	SET RING, 56MM					1		

F 2

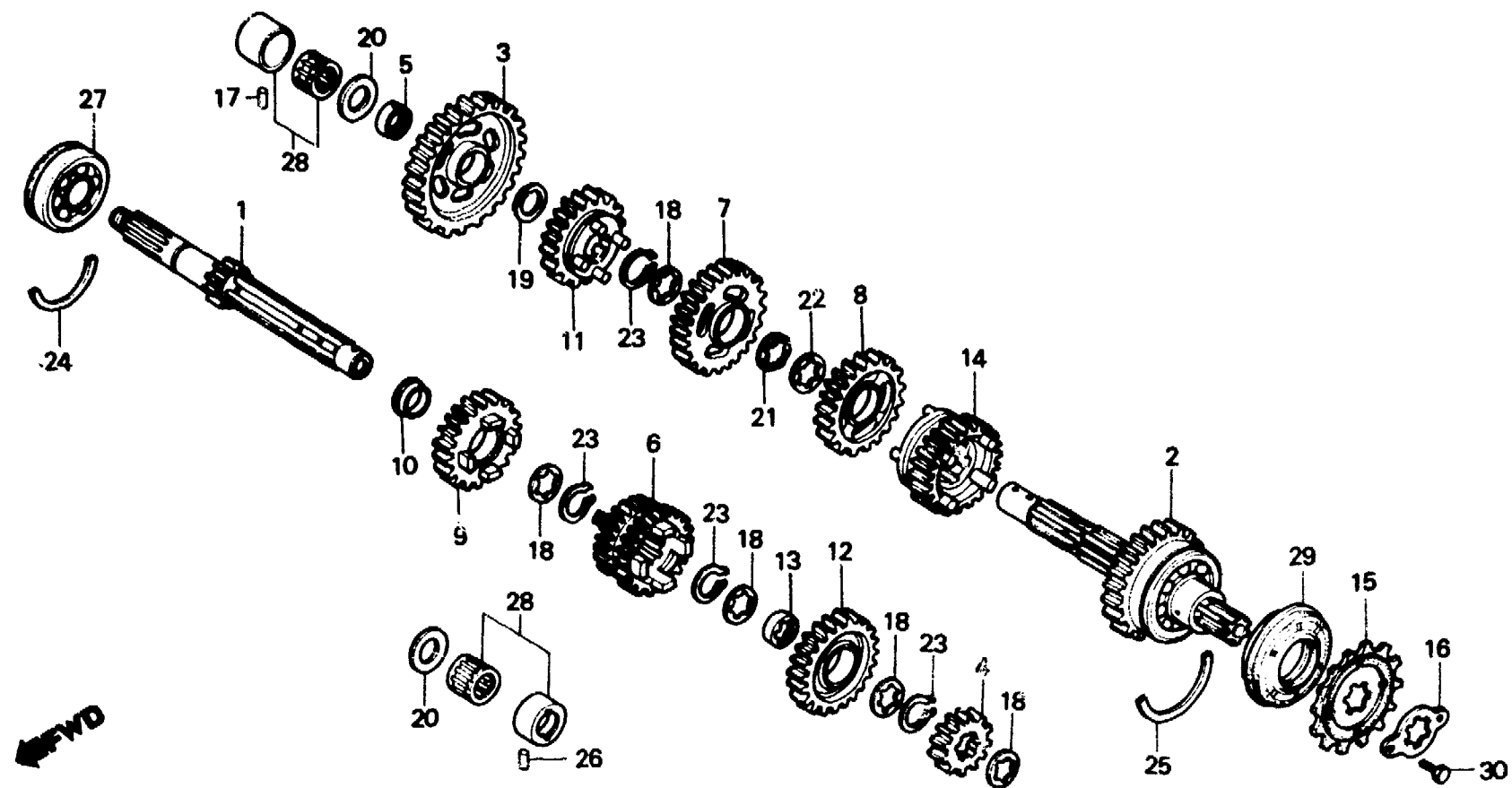
E-12-1

**Transmission
(XL250Rc)**

**Transmission
(XL250Rc)**

**Getriebe
(XL250Rc)**

**Transmisión
(XL250Rc)**



B473-10

Service item	F.R.T.	Ref. No.	Part No.	Description	Reqd. No.					Serial No.	Area code
					S	Sz	SA	Sb	Rc		
		25	90602-428-000	SET RING, 62MM					1		
		26	90705-428-010	PIN, BEARING SETTING					1		
		27	91007-393-003	BEARING, BALL, 63/22N (NACHI)					1		
		28	91022-426-008	BEARING, NEEDLE, 20MM (TOYO)					2		
		29	91206-KB7-005	OIL SEAL, 34X62X14					1		
		30	92000-06010	BOLT, HEX., 6X10					2		

1982.01.10

E

F2