

G 16



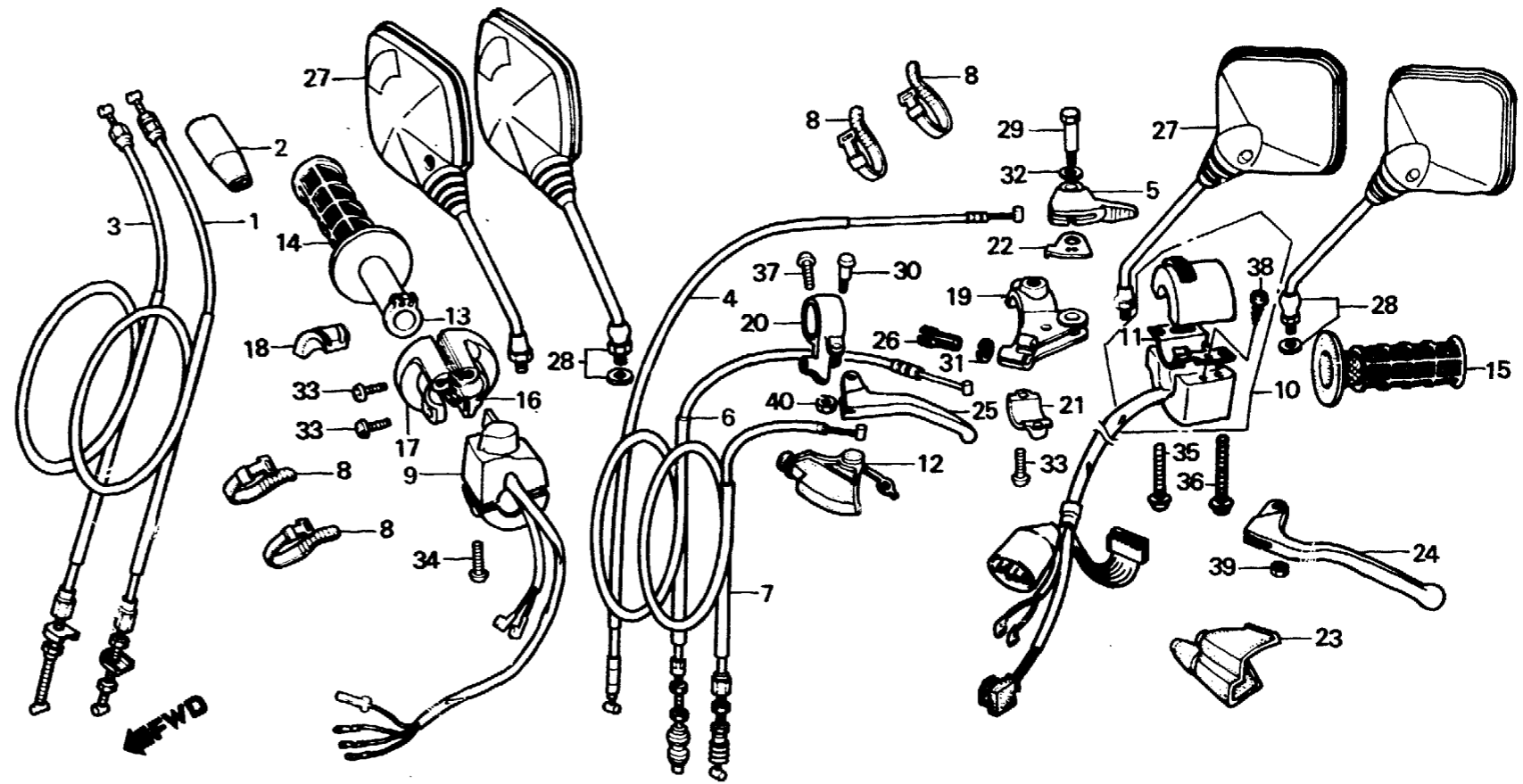
F-3

Handle lever • Switch • Cable

Levier de poignée • Interrupteur • Câble

Lenkstangenhebel • Schalter • Kabel

Palanca de manubrio • Interruptor • Cable



BMG2-40A

Service item	F.R.T.	Ref. No.	Part No.	Description	Reqd. No. XL600						Serial No.	Area code
					Rd	Ld	Re	Le	Rf	Lf		
CABLE COMP. A, THROTTLE (ONE OR ALL)	0.5	1	17910-MG2-000	CABLE COMP. A, THROTTLE	1							B,CM,E,ED,F,G
CABLE COMP., CHOKE	0.3			17910-MG2-010		1					6000605	IT,SA,SD,SW,U
• PIPE, THROTTLE GRIP				17910-MG2-010					1		6000606	AR,2G
LEVER COMP., CHOKE	0.1					1						B,CM,E,ED,F,G
• GRIP, R. HANDLE							1	1	1	1		IT,SA,SD,SW,U
• GRIP, L. HANDLE												
• HOUSING, UPPER THROTTLE		2	17913-KB7-000	COVER, THROTTLE CABLE	1	1	1	1	1	1		
• HOUSING, UNDER THROTTLE		3	17920-MG2-000	CABLE COMP. B, THROTTLE	1							B,CM,E,ED,F,G
• LEVER, L. STEERING HANDLE											6000605	IT,SA,SD,SW,U
• LEVER, DECOMPRESSION						1						
CABLE COMP., CLUTCH	0.2			17920-MG2-010		1					6000606	AR,2G
• CABLE COMP., DECOMPRESSION				17920-MG2-870					1			B,CM,E,ED,F,G
• BRACKET, HANDLE LEVER							1	1	1	1		IT,SA,SD,SW,U
• BRACKET, DECOMPRESSION LEVER												B,CM,E,ED,F,G
SWITCH ASSY., KILL	0.4	4	17950-MG2-000	CABLE COMP., CHOKE	1	1						IT,SA,SD,SW,U
• SWITCH ASSY., WINKER DIMMER				17950-MG2-010					1			AR,2G
							1	1	1	1		B,CM,E,ED,F,G
												IT,SA,SD,SW,U



Not for commercial use

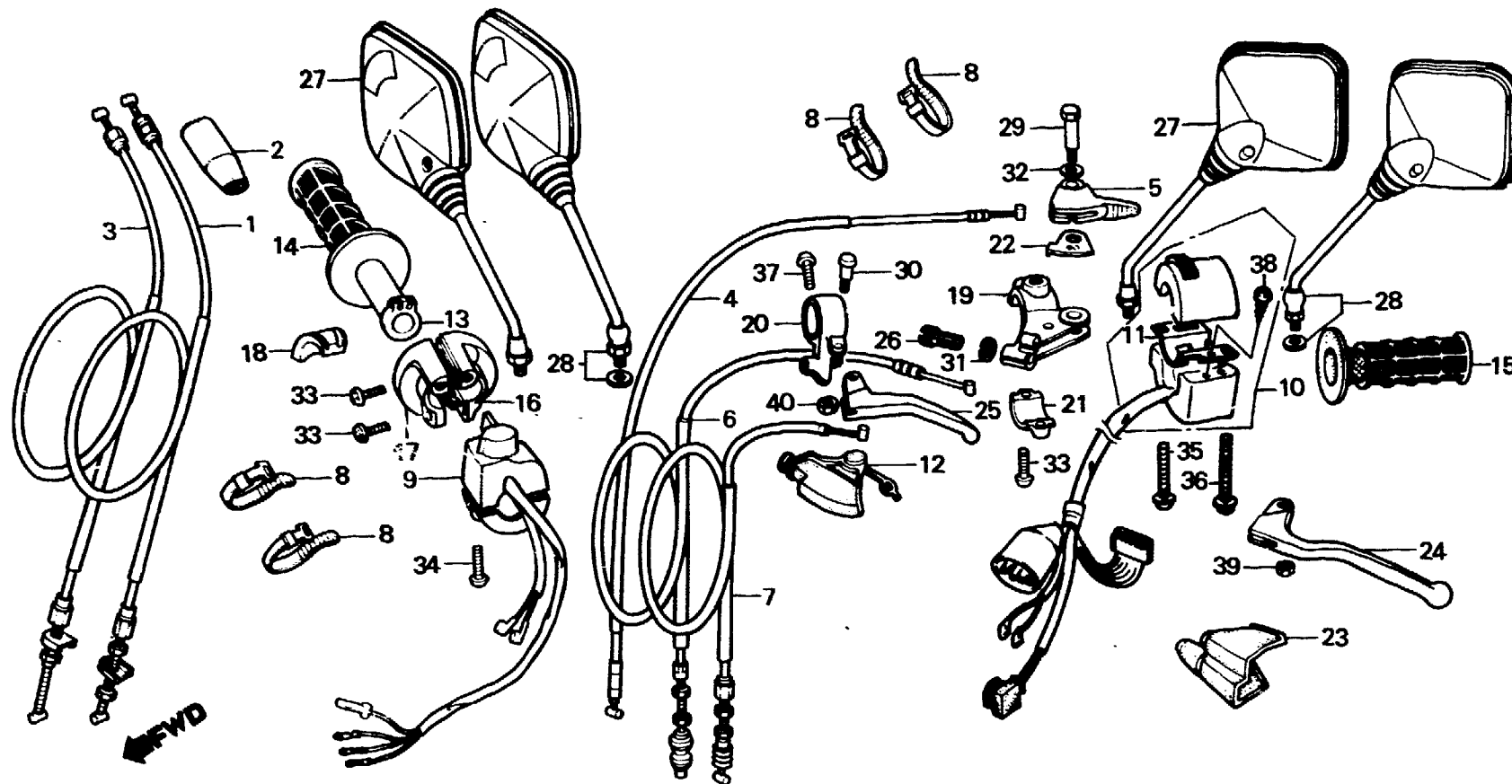
F-3

Handle lever • Switch • Cable

Levier de poignée • Interrupteur • Câble

Lenkstangenhebel • Schalter • Kabel

Palanca de manubrio • Interruptor • Cable



BMG2-40A

Service item	F.R.T.	Ref. No.	Part No.	Description	Reqd. No. XL600						Serial No.	Area code
					Rd	Ld	Re	Le	Rf	Lf		
		5	17961-MG2-000	LEVER COMP., CHOKE	1	1	1	1	1	1		
		6	22870-MG2-000	CABLE COMP., CLUTCH	1	1	1	1	1	1		
		7	22890-MG2-000	CABLE COMP., DECOMPRESSION	1		1		1			
			22890-MG2-730	CABLE COMP., DECOMPRESSION		1		1		1		
		8	32161-404-000	BAND B1, WIRE	4	4	4	4	4	4		
		9	35130-MG2-003	SWITCH ASSY., KILL	1	1	1	1	1	1		
		10	35200-MG2-611	SWITCH ASSY., WINKER DIMMER	1	1		1		1		G,SD
			35200-MG2-651	SWITCH ASSY., WINKER DIMMER	1	1		1		1		AR,B,E,ED,F,IT
			35200-MG2-671	SWITCH ASSY., WINKER DIMMER	1		1					SA,SW,U
		*	35200-KL3-611	SWITCH ASSY., WINKER						1		CM
		*	35200-KL3-711	SWITCH ASSY., WINKER						1		G,SD,2G
		*	35200-KL3-771	SWITCH ASSY., WINKER						1		AR,B,E,ED,F,IT
												SA,SW,U
												CM

H 2



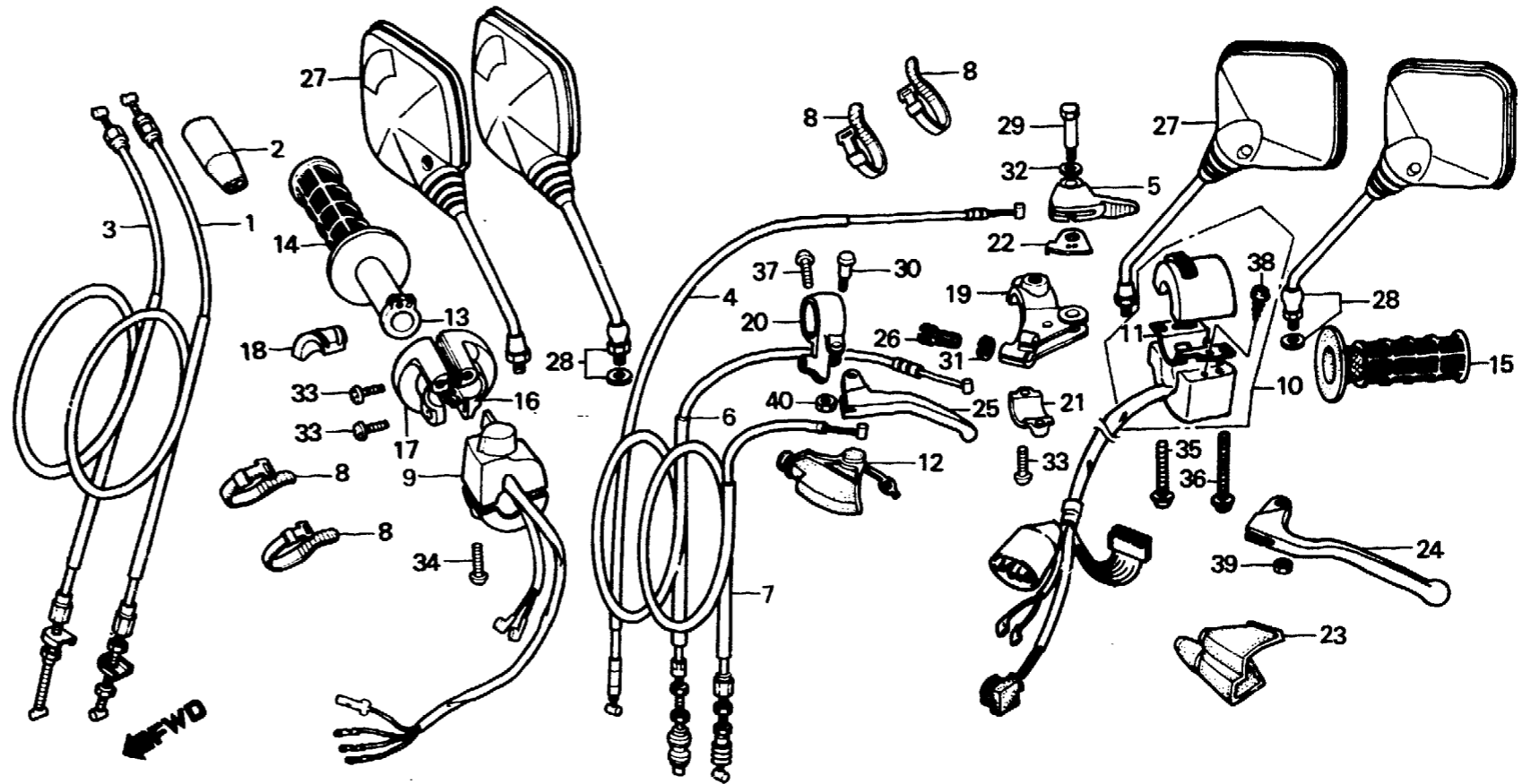
F-3

Handle lever • Switch • Cable

Levier de poignée • Interrupteur • Câble

Lenkstangenhebel • Schalter • Kabel

Palanca de manubrio • Interruptor • Cable



BMG2-40A

Service item	F.R.T.	Ref. No.	Part No.	Description	Reqd. No. XL600						Serial No.	Area code
					Rd	Ld	Re	Le	Rf	Lf		
		*11	35203-MG2-611	PLATE, SETTING (B)						1	1	AR,B,E,ED,F,G IT,SA,SD,SW,U 2G CM
		*	35203-MG2-670	PLATE, SETTING						1		
		12	50177-MA0-000	BOOT, DECOMPRESSION LEVER	1	1	1	1	1	1	1	B,CM,E,ED,F,G IT,SA,SD,SW,U
		13	53141-429-000	PIPE, THROTTLE GRIP	1	1						B,CM,E,ED,F,G IT,SA,SD,SW,U
			53141-KF0-000	PIPE, THROTTLE GRIP	1					1	1	AR,2G B,CM,E,ED,F,G IT,SA,SD,SW,U
		14	53165-MG2-000	GRIP, R. HANDLE	1	1	1	1	1	1	1	
		15	53166-437-000	GRIP, L. HANDLE	1	1	1	1	1	1	1	
		16	53167-KF0-000	HOUSING, UPPER THROTTLE	1	1	1	1	1	1	1	
		17	53168-KF0-000	HOUSING, UNDER THROTTLE	1	1	1	1	1	1	1	
		18	53169-KF0-000	SLIDER, THROTTLE	1	1	1	1	1	1	1	
		19	53172-MG2-000	BRACKET, L. HANDLE LEVER	1	1						B,CM,E,ED,F,G IT,SA,SD,SW,U

H 3



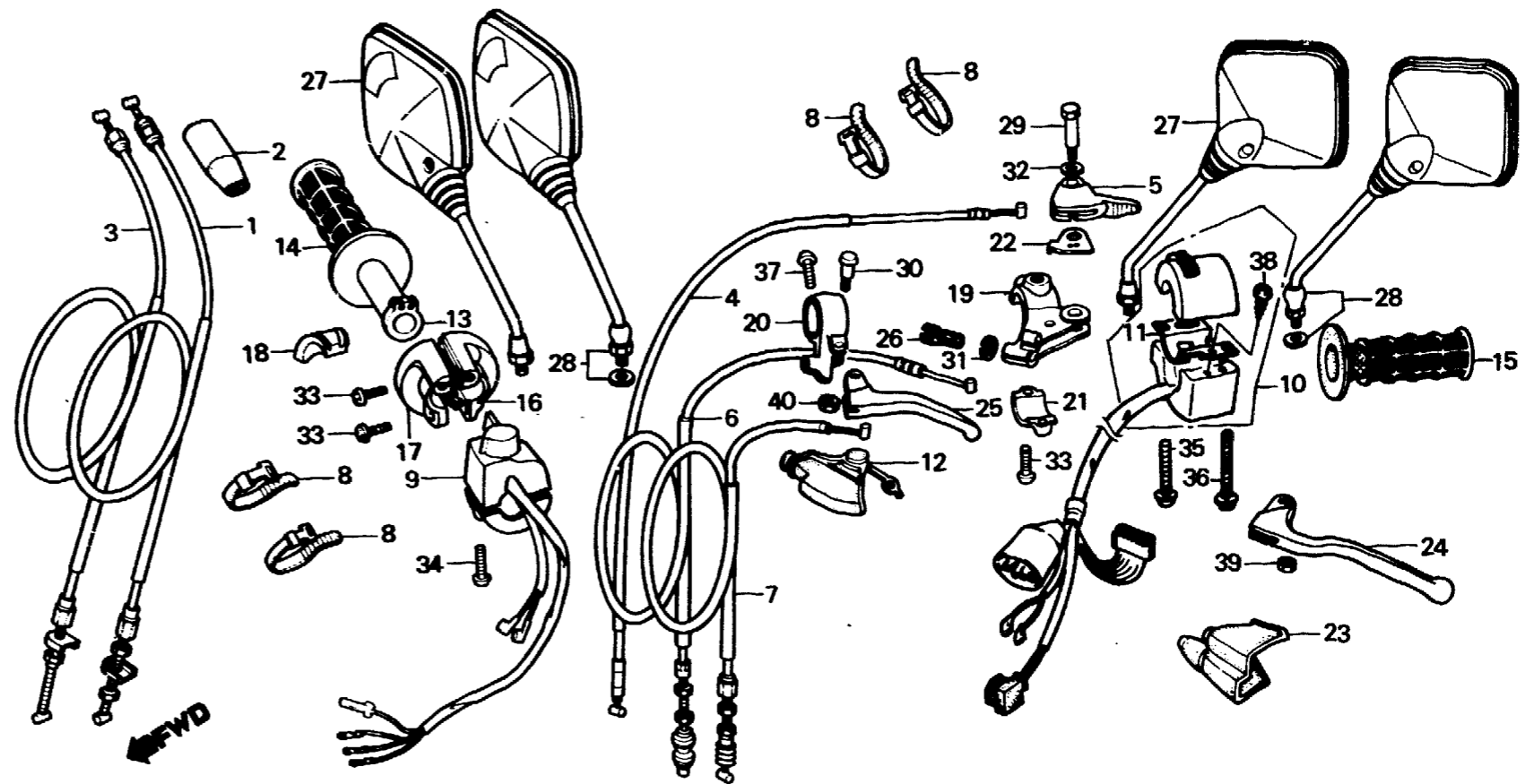
F-3

Handle lever • Switch • Cable

Levier de poignée • Interrupteur • Câble

Lenkstangenhebel • Schalter • Kabel

Palanca de manubrio • Interruptor • Cable



BMG2-40A

Service item	F.R.T.	Ref. No.	Part No.	Description	Reqd. No. XL600						Serial No.	Area code
					Rd	Ld	Re	Le	Rf	Lf		
			53172-MG2-010	BRACKET, L. HANDLE LEVER	1				1			AR,2G B,CM,E,ED,F,G IT,SA,SD,SW,U
		20	53173-435-730	BRACKET, DECOMPRESSION LEVER	1	1	1	1	1	1		
		21	53174-KE1-000	HOLDER, L. LEVER BRACKET	1	1	1	1	1	1		
		22	53176-MG2-000	PLATE, POINT	1	1	1	1	1	1		
		23	53177-MG2-000	COVER, L. HANDLE LEVER	1	1	1	1	1	1		
		24	53178-KE1-000	LEVER, L. STEERING HANDLE	1	1	1	1	1	1		
		25	53180-MG2-000	LEVER, DECOMPRESSION	1	1						B,CM,E,ED,F,G IT,SA,SD,SW,U
			53180-MG2-010	LEVER, DECOMPRESSION	1				1			AR,2G B,CM,E,ED,F,G IT,SA,SD,SW,U
		26	53192-KF0-000	BOLT, CLUTCH WIRE ADJUSTING	1	1						B,CM,E,ED,F,G IT,SA,SD,SW,U



Not for commercial use

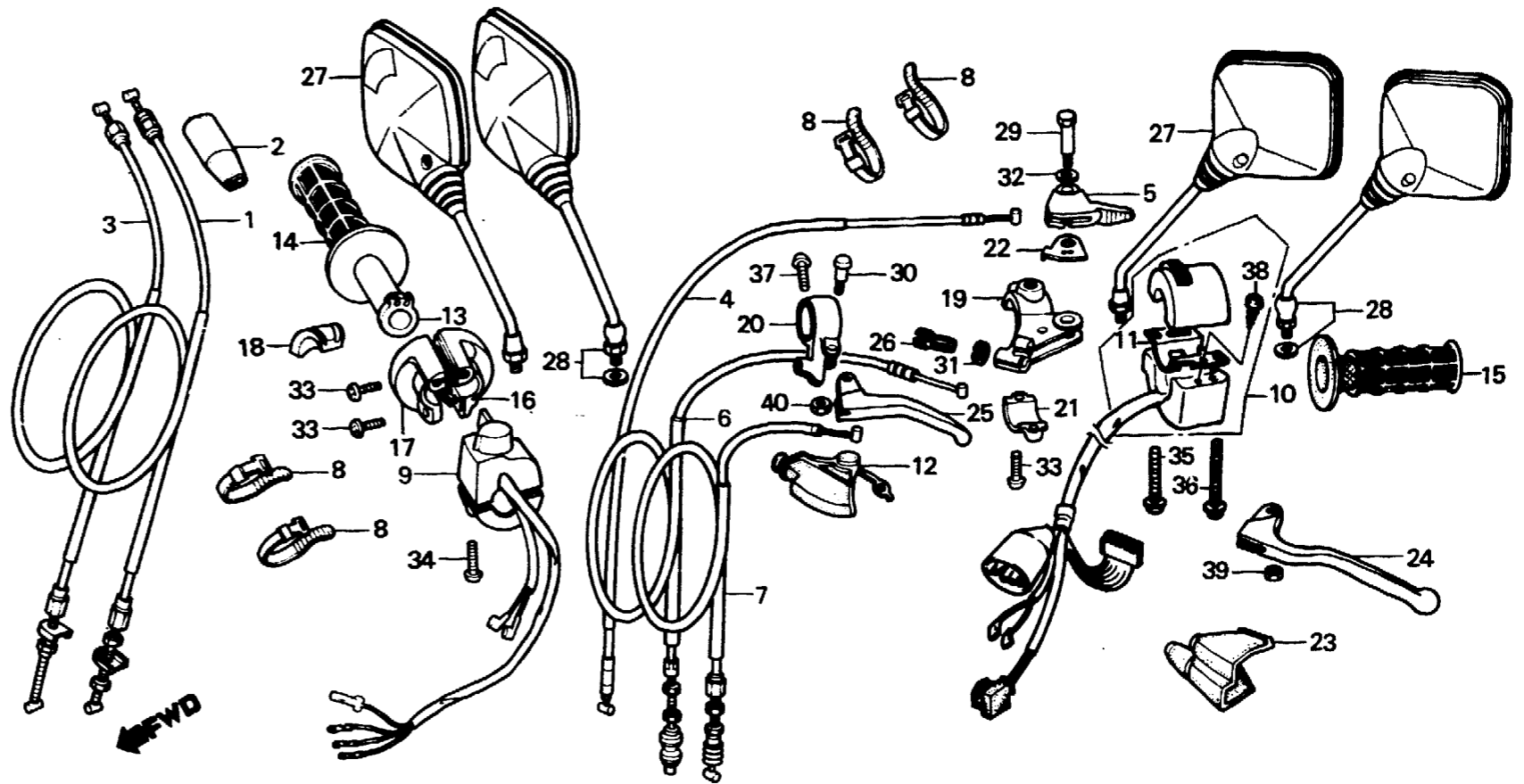
F-3

Handle lever • Switch • Cable

Levier de poignée • Interrupteur • Câble

Lenkstangenhebel • Schalter • Kabel

Palanca de manubrio • Interruptor • Cable



BMG2-40A

Service item	F.R.T.	Ref. No.	Part No.	Description	Reqd. No. XL600						Serial No.	Area code
					Rd	Ld	RE	LE	Rf	Lf		
			53192-KA4-710	BOLT, WIRE ADJUSTING	1				1			AR,2G B,CM,E,ED,F,G IT,SA,SD,SW,U
		27	88110-MG2-003	MIRROR ASSY., BACK	2			2	2			CM,G,SA,SD,SW 2G ED E,IT U
			88110-MG2-651	MIRROR ASSY., BACK	2			2	2	2		U
		28	88110-MG2-621	MIRROR ASSY., BACK	2	2		2	2	2		AR,B,E,F IT ED
		29	90113-MG2-000	BOLT, HANDLE LEVER PIVOT	1	1	1	1	1	1		
		30	90115-147-000	SCREW, HANDLE LEVER PIVOT	1	1	1	1	1	1		
		31	90321-KF0-000	NUT, FIXING	1	1						B,CM,E,ED,F,G IT,SA,SD,SW,U
			90321-KA4-700	NUT, FIXING	1				1			AR,2G B,CM,E,ED,F,G IT,SA,SD,SW,U



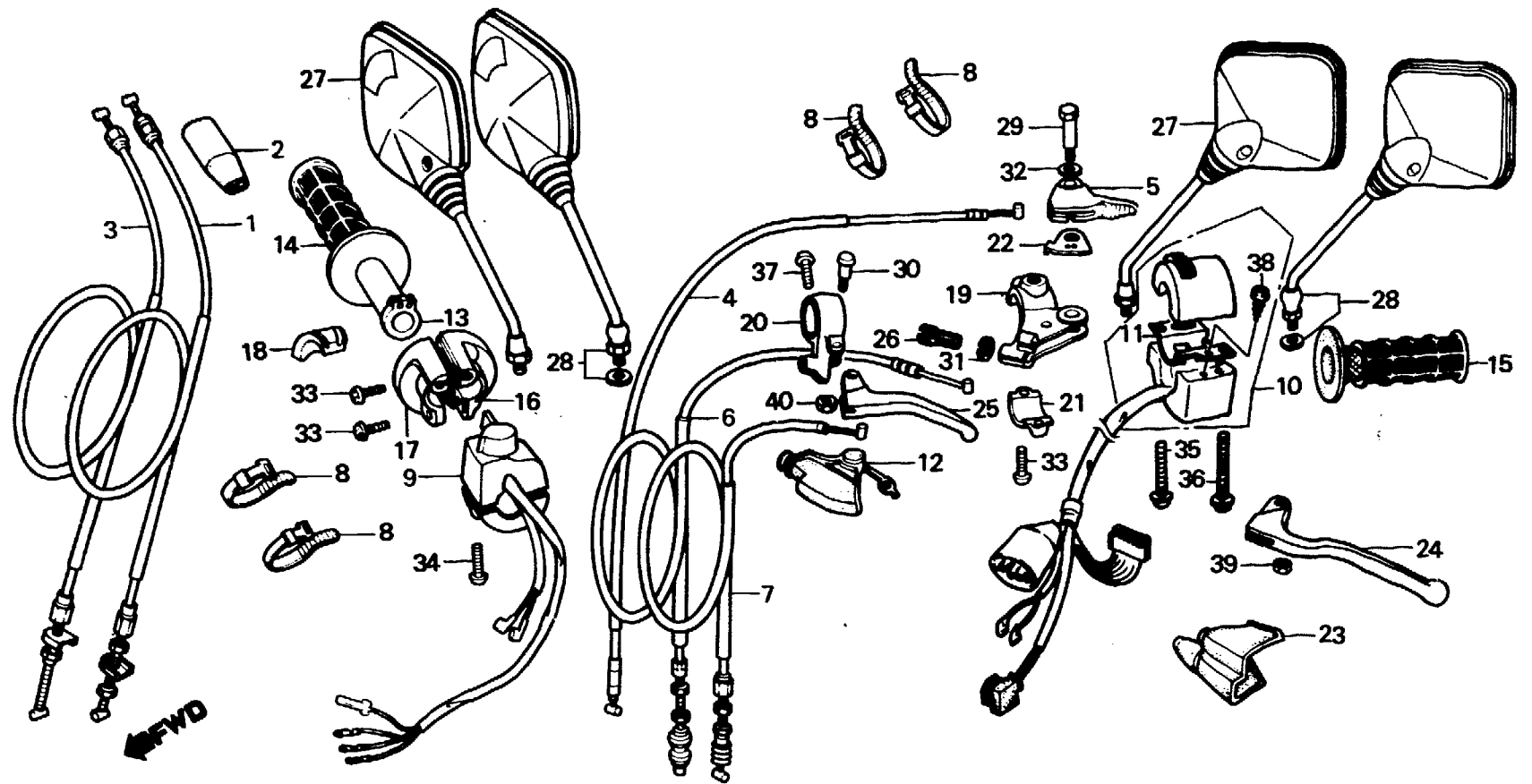
F-3

Handle lever • Switch • Cable

Levier de poignée • Interrupteur • Câble

Lenkstangenhebel • Schalter • Kabel

Palanca de manubrio • Interruptor • Cable



BMG2-40A

Service item	F.R.T.	Ref. No.	Part No.	Description	Reqd. No. XL600						Serial No.	Area code
					Rd	Ld	RE	LE	Rf	Lf		
		32	90405-463-000	WASHER, 8MM	1	1	1	1	1	1		
		33	93500-05016-0A	SCREW, PAN, 5X16	4	4	4	4	4	4		
		34	93500-05020-0A	SCREW, PAN, 5X20	2	2	2	2	2	2		
		35	93500-05030-0A	SCREW, PAN, 5X30	1		1		1			CM
			93500-05020-0A	SCREW, PAN, 5X20	1	1		1	1	1		AR,B,E,ED,F,G IT,SA,SD,SW,U 2G
		36	93500-05045-0A	SCREW, PAN, 5X45	2	2		2	2	2		AR,B,E,ED,F,G IT,SA,SD,SW,U 2G CM
		37	93500-06025-0A	SCREW, PAN, 6X25	1		1		1			
		38	93901-3212C	SCREW, TAPPING, 3X8	1	1	1	1	1	1		
		39	94001-06000-0S	NUT, HEX., 6MM	1	1	1	1	1	1		
		40	94050-05000	NUT, FLANGE, 5MM	1	1	1	1	1	1		



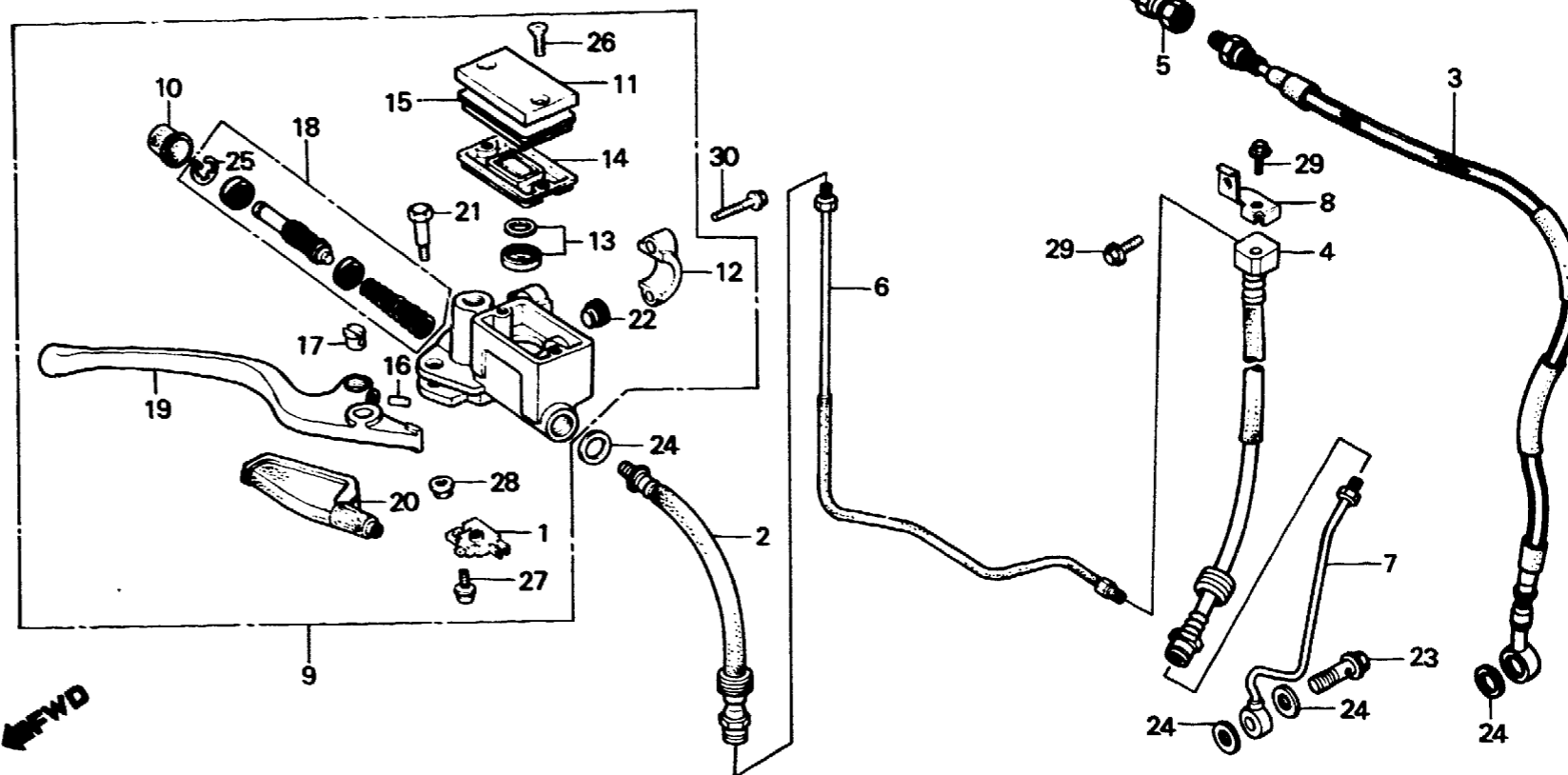
F-4

Front brake master cylinder

Maître cylindre de frein avant

Vorderradbremse-Hauptzylinder

Cilindro maestro de freno delantero



BMG2-41A

Service item	F.R.T.	Ref. No.	Part No.	Description	Reqd. No. XL600						Serial No.	Area code
					Rd	Ld	RE	LE	Rf	Lf		
SWITCH ASSY., FR. STOP	0.1	1	35340-MA5-671	SWITCH ASSY., FR. STOP	1	1	1	1	1	1		
• LEVER, R. STEERING HANDLE		2	45125-MG2-003	HOSE, BRAKE UPPER	1		1					CM,U
HOSE, BRAKE UPPER	0.4	*	45125-MG2-013	HOSE, BRAKE UPPER					1			CM,U
• HOSE, BRAKE LOWER (WHEN SERVICING COMP., UNIT, F.R.T. IS 0.5.)		3	45125-MG2-601	HOSE, FR. BRAKE	1	1						B,E,ED,F,G,IT SA,SD,SW AR
• PIPE, BRAKE UPPER			45125-MG2-941	HOSE, FR. BRAKE	1							
• CYLINDER SET, MASTER		*	45125-MG2-701	HOSE, FR. BRAKE				1		1		AR,B,E,ED,F,G IT,SA,SD,SW,2G
HOSE, FR. BRAKE	0.3	*	45126-MG2-003	HOSE, BRAKE LOWER	1		1					CM,U
• PIPE, BRAKE LOWER (WHEN SERVICING COMP., UNIT, F.R.T. IS 0.5.)		*	45126-MG2-013	HOSE, BRAKE LOWER					1			CM,U
• CYLINDER ASSY., FR. MASTER		5	45127-MG3-003	JOINT, BRAKE HOSE	1	1		1				AR,B,E,ED,F,G IT,SA,SD,SW
		*	45127-MG3-013	JOINT, BRAKE HOSE					1	1		AR,B,E,ED,F,G IT,SA,SD,SW,2G
		6	45135-MG2-000	PIPE, BRAKE UPPER	1		1		1			CM,U
		7	45136-MG2-000	PIPE, BRAKE LOWER	1		1		1			CM,U
		8	45462-MG2-000	STAY, BRAKE HOSE	1							CM,U
		*	45462-MG2-010	STAY, BRAKE HOSE				1	1			CM,U



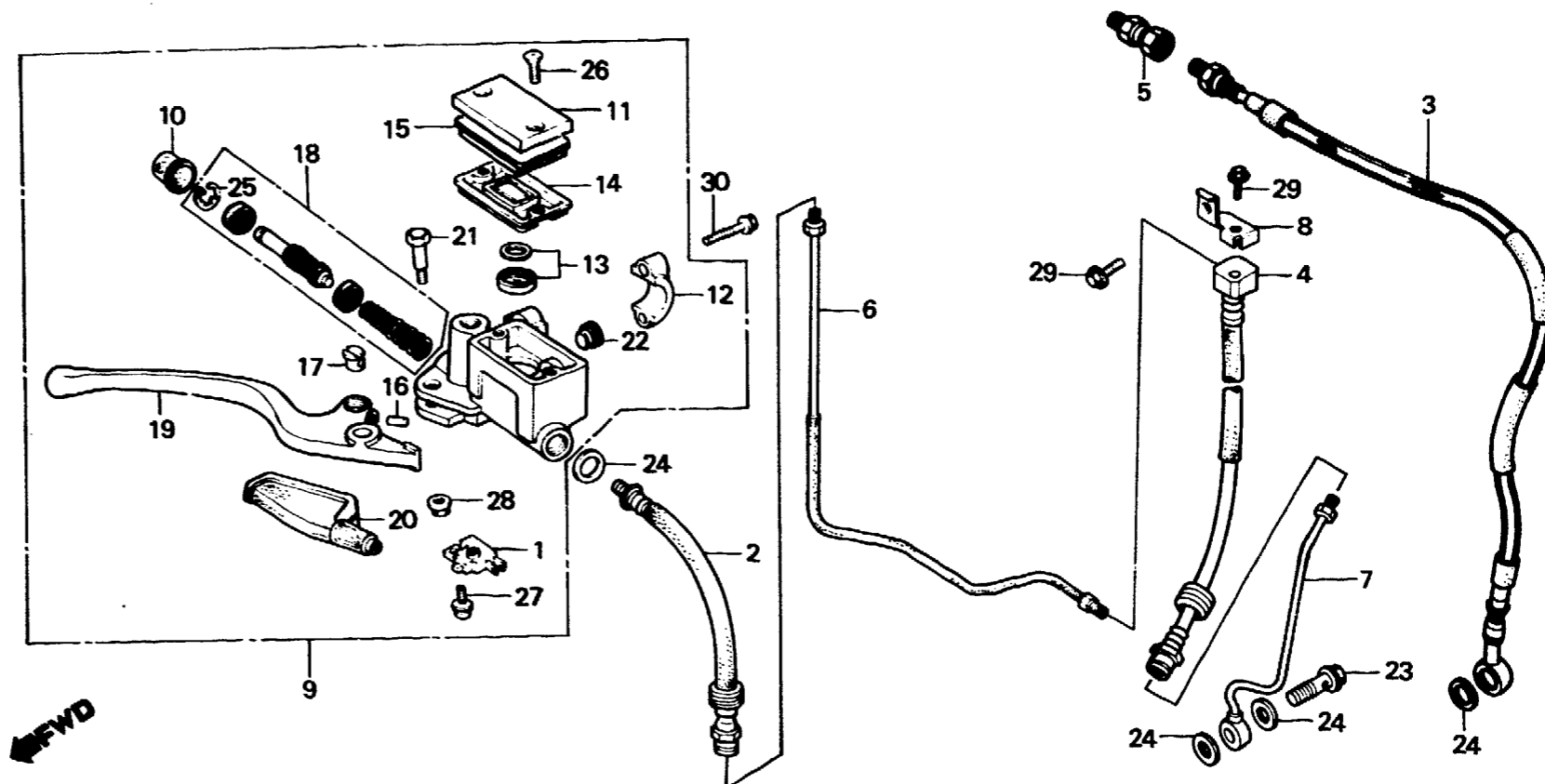
F-4

Front brake master cylinder

Maitre cylindre de frein avant

Vorderradbremse-Hauptzylinder

Cilindro maestro de freno delantero



BMG2-41A

Service item	F.R.T.	Ref. No.	Part No.	Description	Reqd. No. XL600						Serial No.	Area code
					Rd	Ld	Re	Le	Rf	Lf		
		9	45500-MG2-621	CYLINDER ASSY., FR. MASTER	1	1						F
			45500-MG3-641	CYLINDER ASSY., FR. MASTER	1	1						B,CM,E,ED,G,IT SA,SD,SW,U
			45500-MG2-622	CYLINDER ASSY., FR. MASTER				1				F
			45500-MG3-642	CYLINDER ASSY., FR. MASTER	1							AR B,CM,ED,IT,SW
		*	45500-MG2-891	CYLINDER ASSY., FR. MASTER			1	1		1	1	
		10	45504-410-003	BOOT COMP.	1	1	1	1	1	1		
		11	45513-MG2-621	CAP, MASTER CYLINDER	1	1						F
			45513-MG3-671	CAP, MASTER CYLINDER	1	1						B,CM,E,ED,G,IT SA,SD,SW,U
			45513-MG2-622	CAP, MASTER CYLINDER				1				F
			45513-MG3-672	CAP, MASTER CYLINDER	1							AR B,CM,ED,IT,SW
		*	45513-KK1-771	CAP, MASTER CYLINDER						1	1	
		12	45517-166-006	HOLDER, MASTER CYLINDER	1	1	1	1	1	1		
		13	45518-MG3-006	SEPARATOR COMP.	1	1						B,CM,E,ED,F,G IT,SA,SD,SW,U



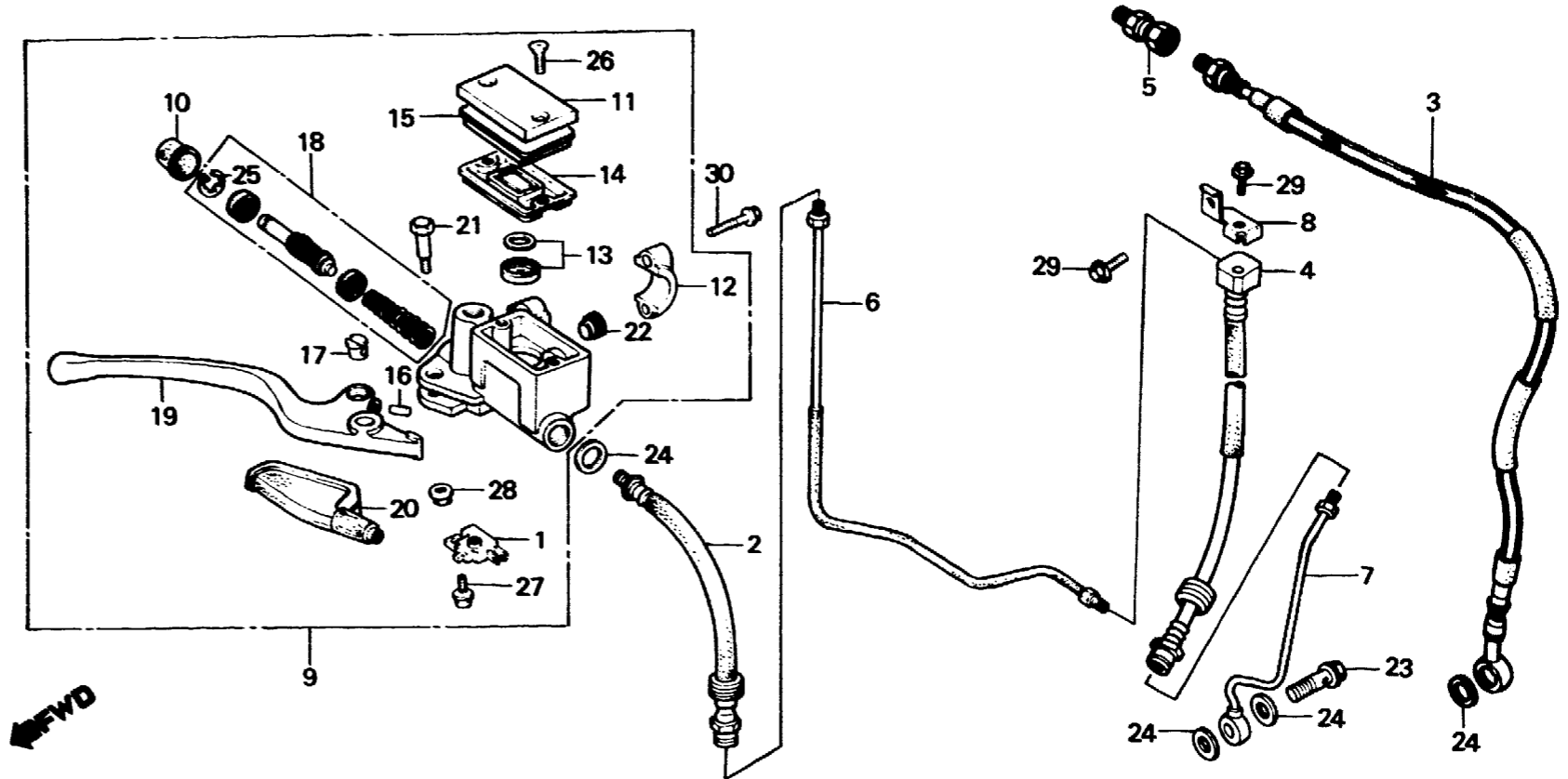
F-4

Front brake master cylinder

Maître cylindre de frein avant

Vorderradbremse-Hauptzylinder

Cilindro maestro de freno delantero



BMG2-41A

Service item	F.R.T.	Ref. No.	Part No.	Description	Reqd. No. XL600						Serial No.	Area code
					Rd	Ld	RE	LE	Rf	Lf		
			45518-MG3-016	SEPARATOR COMP.	1					1		AR,2G B,CM,E,ED,F,G IT,SA,SD,SW,U
		14	45520-GE2-006	DIAPHRAGM	1	1	1	1				
		* 45520-MG7-006	DIAPHRAGM							1	1	
		* 15	45521-HA2-006	PLATE, DIAPHRAGM						1	1	
		16	45526-MG3-006	ROD COMP., PUSH	1	1	1	1	1	1	1	
		17	45527-MG3-006	PIN, ADJUSTING	1	1	1	1	1	1	1	
		18	45530-MG3-305	CYLINDER SET, MASTER	1	1	1	1	1	1	1	
		19	53175-MG3-640	LEVER, R. STEERING HANDLE	1	1	1	1	1	1	1	
		20	53176-MG3-641	COVER, R. HANDLE LEVER	1	1	1	1	1	1	1	
		21	90114-166-006	BOLT, HANDLE LEVER PIVOT	1	1	1	1	1	1	1	
		* 22	90130-MG3-006	BOLT, PLUG						1	1	
		23	90145-961-000	BOLT, OIL, 10X22	1	1	1	1				
		* 90145-961-010	BOLT, OIL, 10X22							1	1	
		24	90545-300-000	WASHER, OIL BOLT	3	3	3	3	3	3	3	

H 9



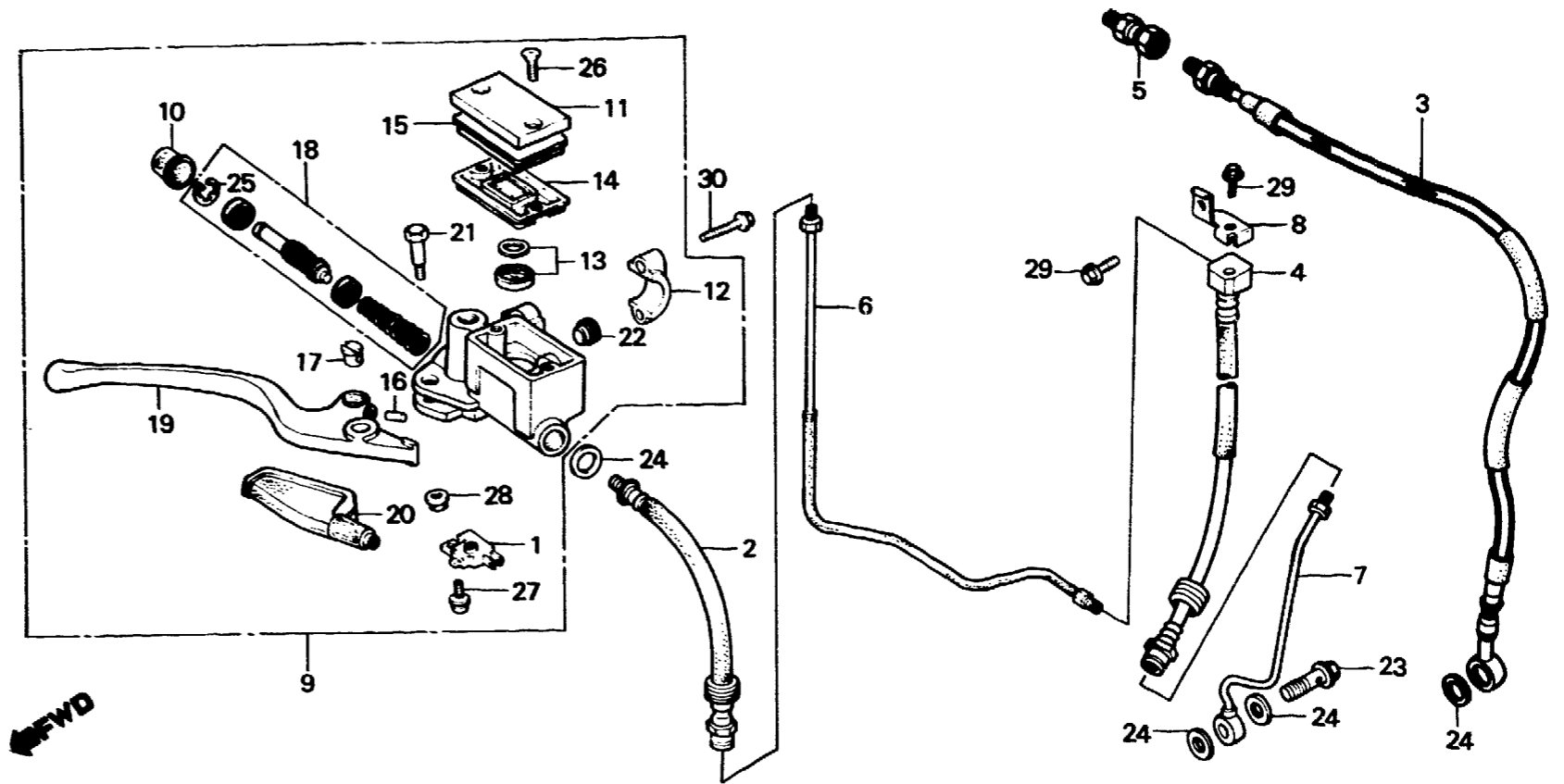
F-4

Front brake master cylinder

Maître cylindre de frein avant

Vorderradbremse-Hauptzylinder

Cilindro maestro de freno delantero



BMG2-41A

Service item	F.R.T.	Ref. No.	Part No.	Description	Reqd. No. XL600						Serial No.	Area code
					Rd	Ld	RE	LE	Rf	Lf		
		25	90651-MA5-671	CIRCLIP	1	1	1	1	1	1		
		26	93600-04012-1G	SCREW, FLAT, 4X12	2	2	2	2	2	2		
		27	93893-04012-17	SCREW-WASHER, 4X12	1	1	1	1	1	1		
		28	94050-06000	NUT, FLANGE, 6MM	1	1	1	1	1	1		
		29	96000-06010-00	BOLT, FLANGE, 6X10	2	2	2	2	2	2		CM,U
		30	96000-06025-00	BOLT, FLANGE, 6X25	2	2	2	2	2	2		

H 10

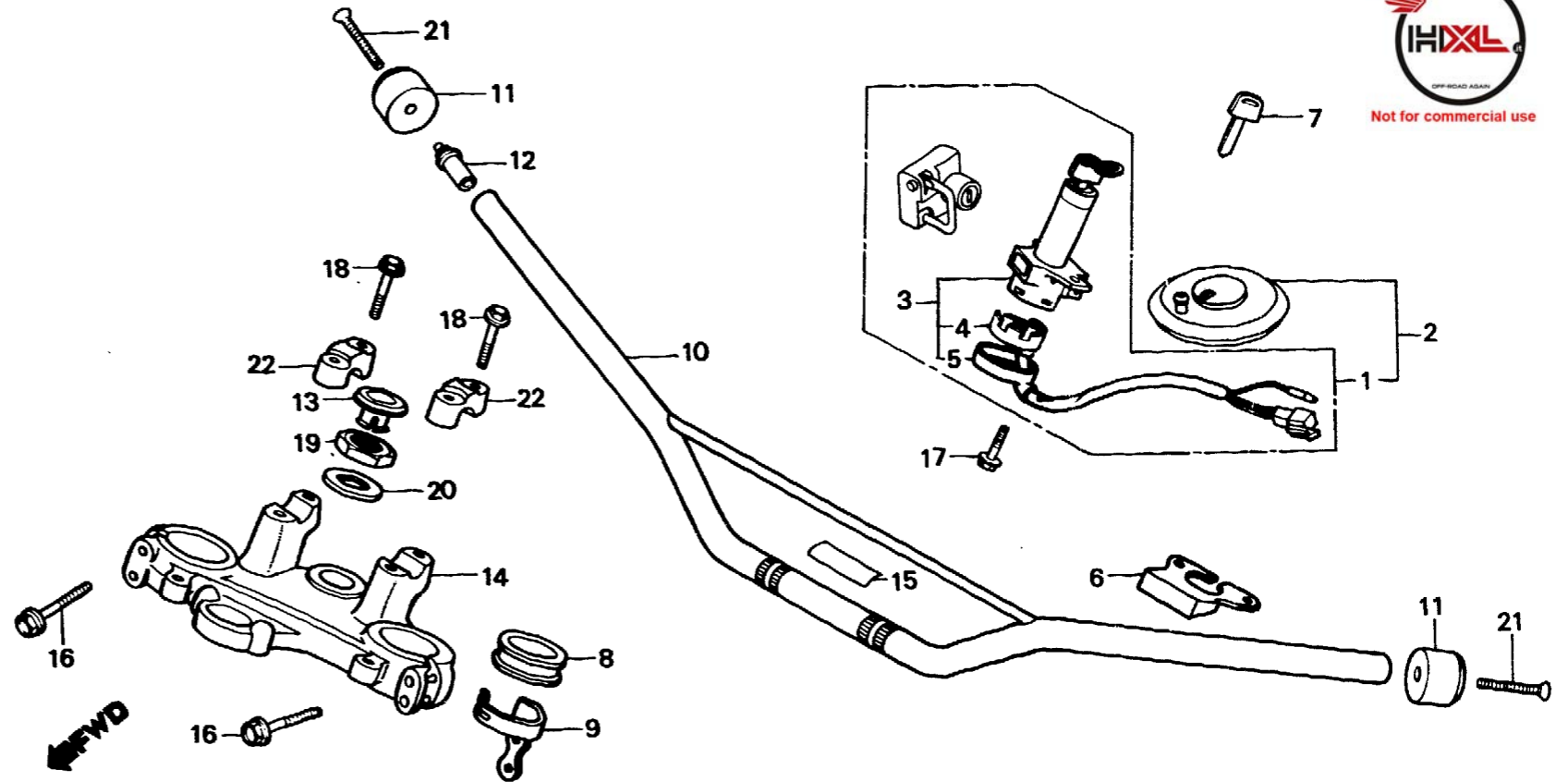
F-5

Handle pipe • Top bridge

Guidon • Haut de fourche

Lenkrohr • Obere Brücke

Tube do manubrio • Puente superior



BMG2-42A

Service item	F.R.T.	Ref. No.	Part No.	Description	Reqd. No. XL600						Serial No.	Area code
					Rd	Ld	RE	LE	Rf	Lf		
KEY SET	0.6	1	35010-MG2-000	KEY SET	1		1		1			AR,B,CM,E,F,IT SA,SW,U
• PIPE, STEERING HANDLE SWITCH ASSY., COMBINATION & LOCK	0.4		35010-MG2-610	KEY SET	1			1				ED ED,G
• BASE COMP., CONTACT BRIDGE, FORK TOP	0.5	*	35010-KL3-610	KEY SET	1				1			SD G,2G
		2	35010-MG2-730	KEY SET		1		1		1		B,F,IT,SW
		3	35100-MG2-000	SWITCH ASSY., COMBINATION & LOCK	1	1	1	1	1	1		AR,B,CM,E,F,IT SA,SW,U
			35100-MG2-610	SWITCH ASSY., COMBINATION & LOCK	1						1	ED ED,G,SD
			35100-MG2-611	SWITCH ASSY., COMBINATION & LOCK				1				ED SD
		*	35100-KL3-611	SWITCH ASSY., COMBINATION & LOCK					1			G,2G
		4	35101-KB7-007	BASE COMP., CONTACT	1	1	1	1	1	1		AR,B,CM,E,ED,F IT,SA,SD,SW,U
					1							G
		*	35101-KL3-610	BASE COMP., CONTACT					1			G,2G
		* 5	35102-KB7-007	COVER, SWITCH					1	1		

H 11

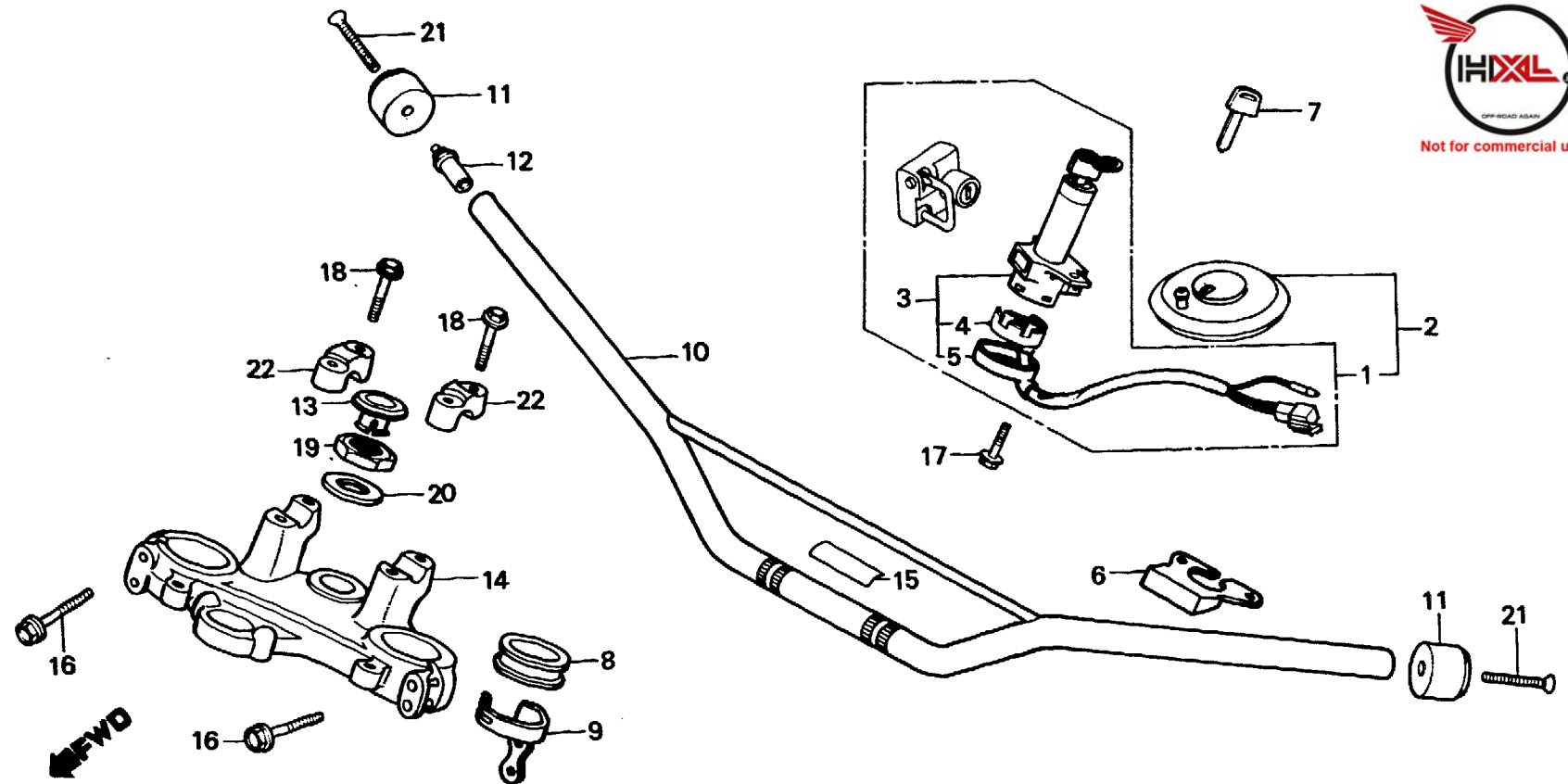
F-5

Handle pipe • Top bridge

Guidon • Haut de fourche

Lenkrohr • Obere Brücke

Tubo do manubrio • Puente superior



BMG2-42A

Service item	F.R.T.	Ref. No.	Part No.	Description	Reqd. No. XL600						Serial No.	Area code
					Rd	Ld	Re	Le	Rf	Lf		
		6	35106-MA1-610	COVER, COMBINATION SWITCH	1			1				ED
		7	35121-KB7-810	KEY, BLANK (TYPE 1)	(1)	(1)	(1)	(1)	(1)	(1)		G,SD,2G AR,B,CM,E,F,IT SA,SW,U
			35122-KB7-810	KEY, BLANK (TYPE 2)	(1)	(1)	(1)	(1)	(1)	(1)		ED AR,B,CM,E,F,IT SA,SW,U
			35121-MG2-811	KEY, BLANK	(1)			(1)				ED
		8	45466-KA4-000	INNER, CABLE GUIDE	1	1		1	1	1		G,SD,2G AR,B,E,ED,F,G IT,SA,SD,SW,2G
		9	45469-MG2-600	GUIDE, BRAKE HOSE TOP	1	1		1	1	1		AR,B,E,ED,F,G IT,SA,SD,SW,2G
		10	53100-MG2-000	PIPE, STEERING HANDLE	1	1						B,CM,E,ED,F,G IT,SA,SD,SW,U
			53100-MG2-010	PIPE, STEERING HANDLE	1							AR
		*	53100-MG2-890	PIPE, STEERING HANDLE				1	1	1		
		11	53167-MG2-000	GUARD, HANDLE END	2	2	2	2	2	2		

H 12

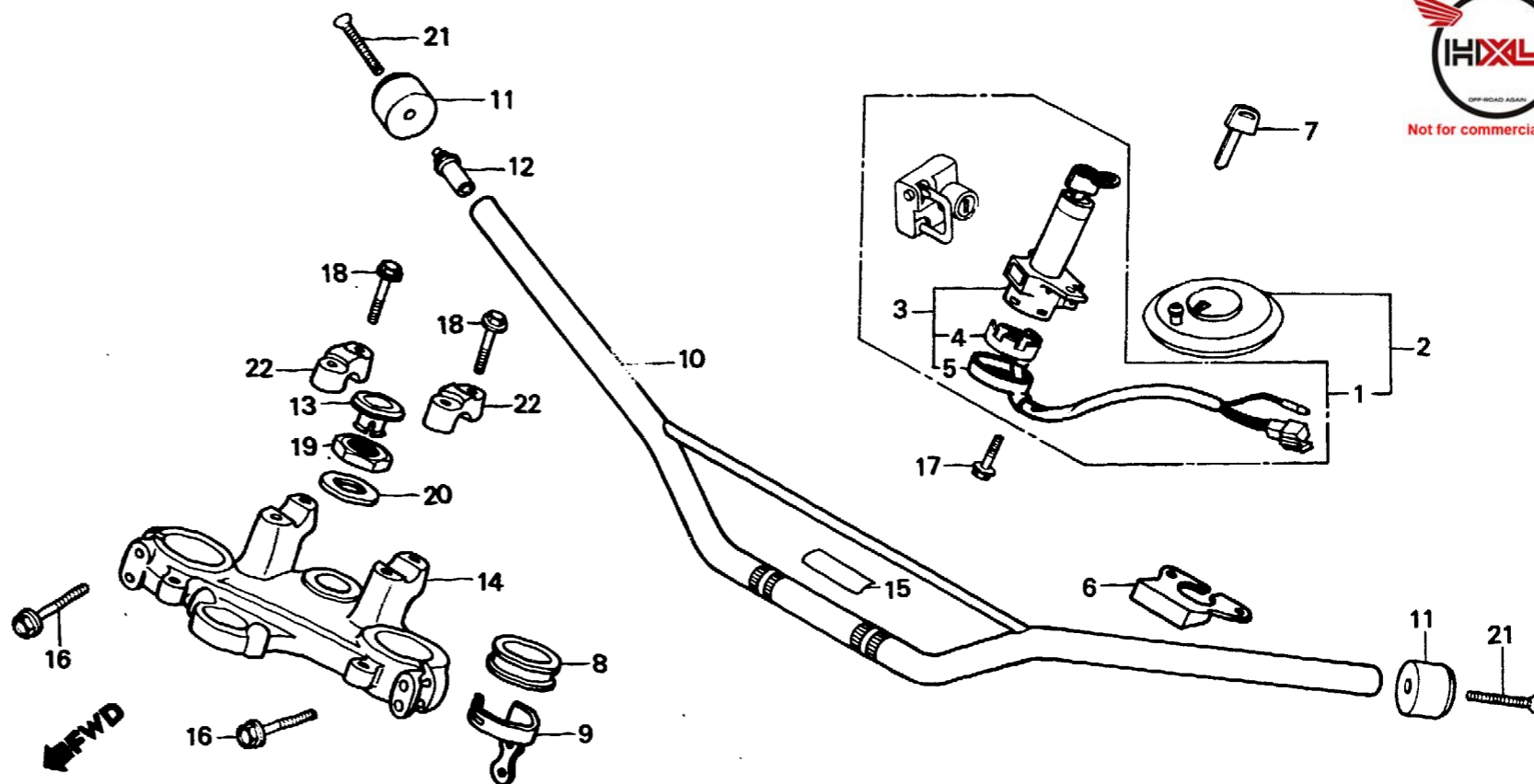
F-5

Handle pipe • Top bridge

Guidon • Haut de fourche

Lenkrohr • Obere Brücke

Tube do manubrio • Puente superior



BMG2-42A

Service item	F.R.T.	Ref. No.	Part No.	Description	Reqd. No. XL600						Serial No.	Area code
					Rd	Ld	Re	Le	Rf	Lf		
		12	53168-391-670	HOLDER, R. HANDLE END GUARD	1	1	1	1	1	1		
		13	53208-MC4-000	CAP, STEERING STEM	1	1	1	1	1	1		
		14	53230-MG2-000	BRIDGE, FORK TOP	1	1		1		1		AR,B,E,ED,F,G SA,SD,SW CM,U
		*	53230-MG2-700	BRIDGE, FORK TOP	1			1		1		IT AR,B,E,ED,F,G IT,SA,SD,SW,2G
		15	87133-KF0-000	LABEL, STARTING PROCEDURE	1	1						B,CM,E,ED,F,G IT,SA,SD,SW,U
			87133-KF0-770	LABEL, STARTING PROCEDURE	1							AR
		*	87133-MG2-890	LABEL, STARTING PROCEDURE			1	1		1	1	
		16	90103-KF0-000	BOLT, FLANGE, 8X45	4	4	4	4	4	4		B,CM,E,F,IT,SA
		17	90105-KB7-000	BOLT, FLANGE, 8X19	2	2						U
			90105-MA6-000	BOLT, FLANGE, 8X19	2			2	2			AR B,CM,F,IT

H 13



Not for commercial use

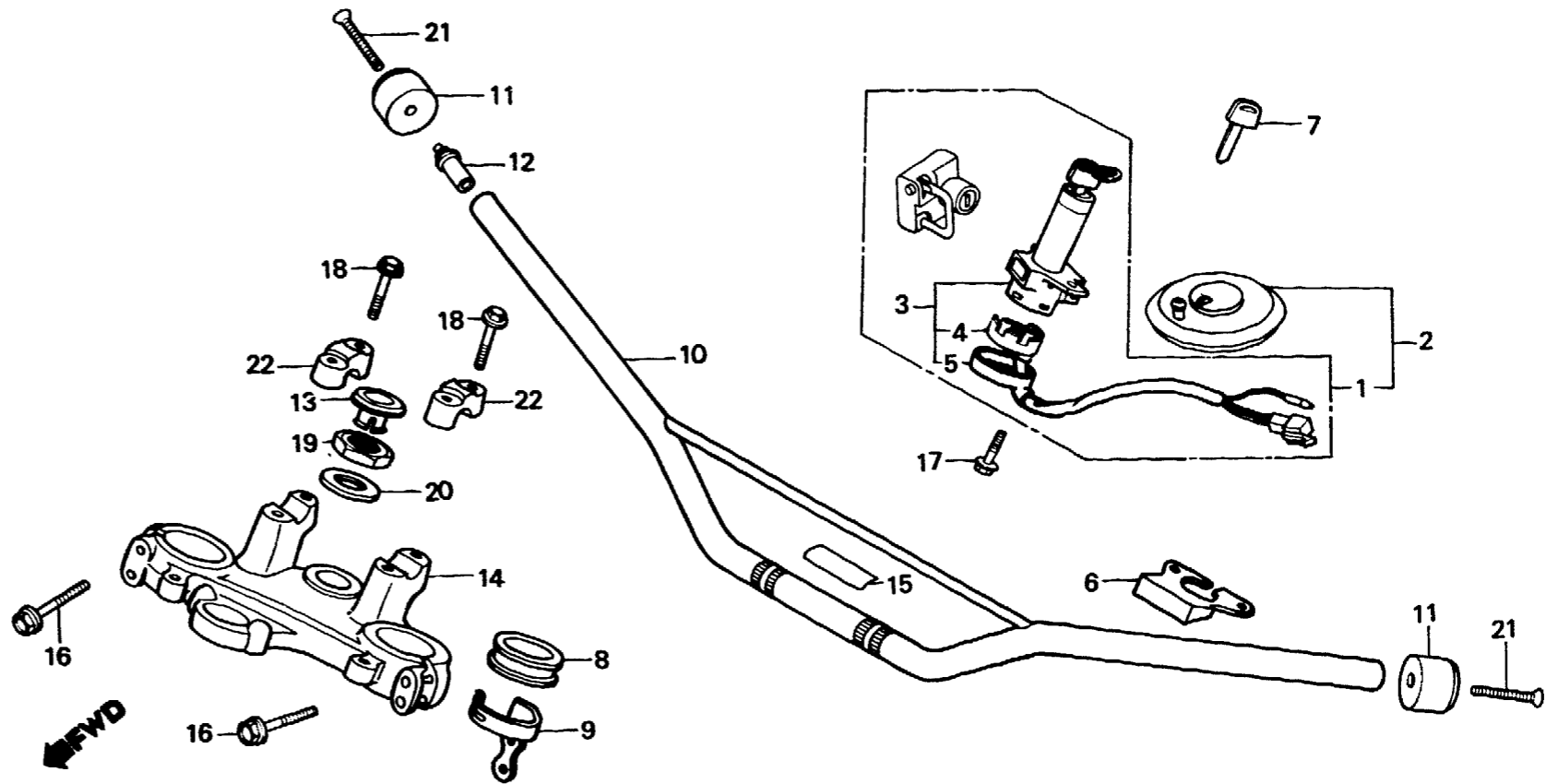
F-5

Handle pipe • Top bridge

Guidon • Haut de fourche

Lenkrohr • Obere Brücke

Tube do manubrio • Puente superior



BMG2-42A

Service item	F.R.T.	Ref. No.	Part No.	Description	Reqd. No. XL600						Serial No.	Area code
					Rd	Ld	Re	Le	Rf	Lf		
			90105-MC7-610	BOLT, COMBINATION SWITCH	2		2					ED,G,SD,SW
		*	90104-MJ1-000	BOLT, FLANGE, 8X19					2	2		AR,B,CM,E,ED,F
		*	90105-KE1-721	BOLT, COMBINATION SWITCH					2			IT,SA,SW,U
		18	90111-362-000	BOLT, FLANGE, 8X36	4	4	4	4	4	4		G,SD,2G
		19	90304-425-000	NUT, STEERING STEM	1	1	1	1	1	1		
		20	90503-428-870	WASHER, STEERING STEM	1	1	1	1	1	1		
		21	93700-06045-0G	SCREW, FLAT, 6X45	2	2	2	2	2	2		
		22	95014-22200	HOLDER B2, HANDLE PIPE UPPER	2	2	2	2	2	2		