

2-J7

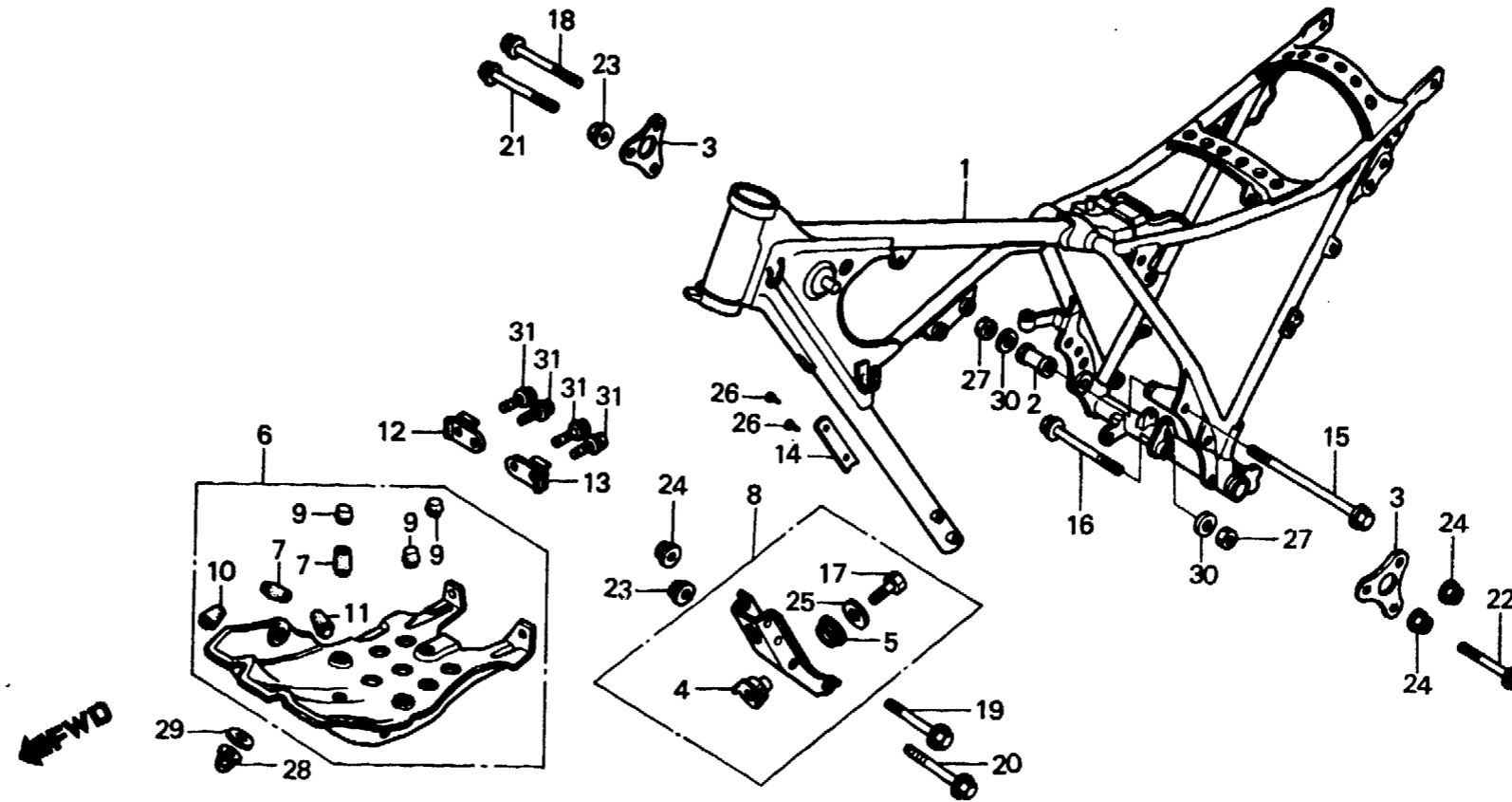
F-26-1

**Frame body
(XL250Rc)**

**Cadre
(XL250Rc)**

**Rahmen
(XL250Rc)**

**Cuerpo de cuadro
(XL250Rc)**



BKB7-23

Service item	F.R.T.	Ref. No.	Part No.	Description	Reqd. No.					Serial No.	Area code
					S	Sz	SA	Sb	Rc		
		19	90154-MA0-000	BOLT, FLANGE, 8X60					2		
		20	90155-MA0-000	BOLT, FLANGE, 10X62					2		
		21	90156-KB7-000	BOLT, FLANGE, 8X68					1		
		22	90157-MA0-770	BOLT, FLANGE, 10X73					1		
		23	90308-382-670	NUT, FLANGE, 10MM					3		
		24	90309-357-000	NUT, UBS, 8MM					4		
		25	90534-011-000	WASHER, 8.3MM					1		
		26	90841-001-000	SCREW, RIVET, 1.5X5					2		B,E,ED,F1,F2,G1,G2,IT SD,SW
		27	94001-12000-0S	NUT, HEX., 12MM					2		
		28	94021-08000-0S	NUT, CAP, 8MM					1		
		29	94101-08000	WASHER, PLAIN, 8MM					1		
		30	94101-12000	WASHER, PLAIN, 12MM					2		
		31	95700-06012-00	BOLT, FLANGE, 6X12					4		

2-J8

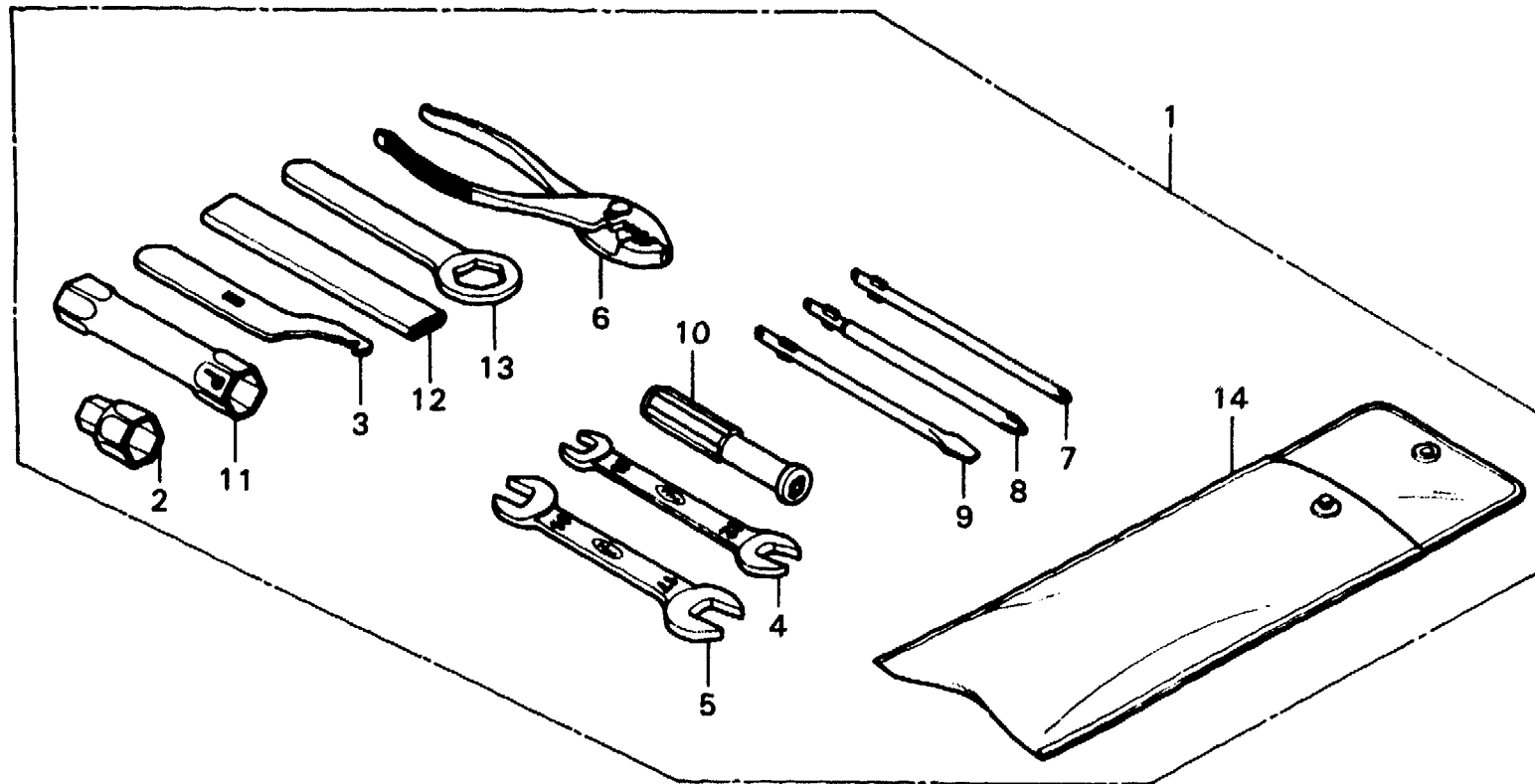
F-27

Tool
(XL250S·SZ·SA·SB)

Outils
(XL250S·SZ·SA·SB)

Werkzeug
(XL250S·SZ·SA·SB)

Herramientas
(XL250S·SZ·SA·SB)



B428-38

Service item	F.R.T.	Ref. No.	Part No.	Description	Reqd. No.					Serial No.	Area code
					S	Sz	SA	Sb	Rc		
		1	89010-428-000	TOOL SET	1	1	1	1			
		2	89015-428-000	WRENCH, BOX, 22X17	1	1	1	1			
		3	89215-404-670	SPANNER, PIN	1	1	1	1			
		4	99001-10120	SPANNER, 10X12	1	1	1	1			
		5	99001-14170	SPANNER, 14X17	1	1	1	1			
		6	99002-13500	PLIERS, 135	1	1	1	1			
		7	99003-10000	DRIVER 2, PLUS SCREW	1	1	1	1			
		8	99003-20000	DRIVER 3, PLUS SCREW	1	1	1	1			
		9	99003-30000	DRIVER 2, MINUS SCREW	1	1	1	1			
		10	99003-50000	GRIP	1	1	1	1			
		11	99004-18190	WRENCH, BOX, P18X19	1	1	1	1			
		12	99004-12000	HANDLE, EYE WRENCH, 120MM	1	1	1	1			
		13	99006-22000	WRENCH, EYE, 22MM	1	1	1	1			
		14	99008-02000	BAG, TOOL, 200MM	1	1	1	1			

2-J9

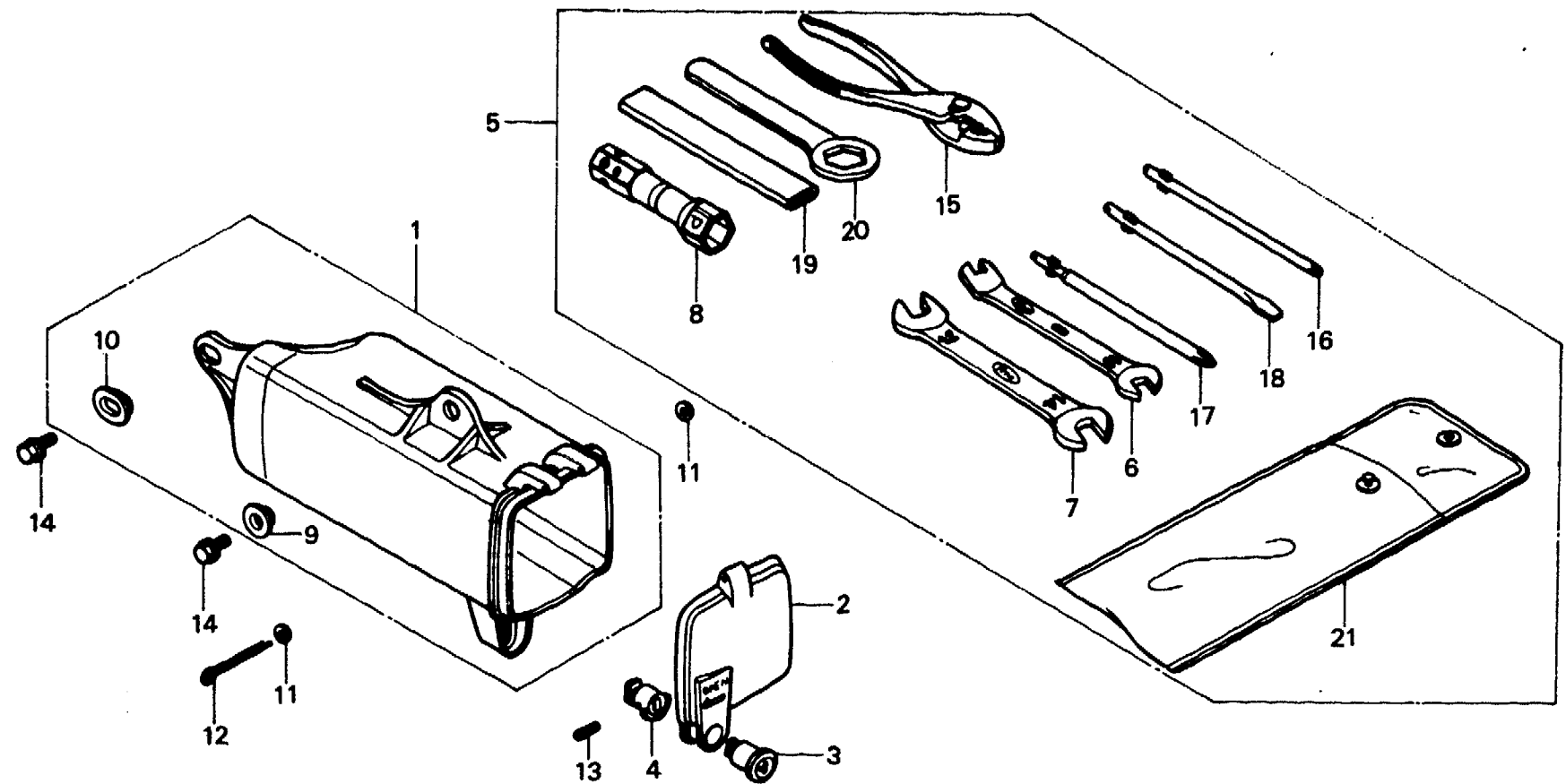
F-27-1

**Tool
(XL250Rc)**

**Outils
(XL250Rc)**

**Werkzeug
(XL250Rc)**

**Herramientas
(XL250Rc)**



BKB7-24

Service item	F.R.T.	Ref. No.	Part No.	Description	Reqd. No.				Serial No.	Area code
					S	Sz	SA	Sb		
BOX, TOOL	0.1	1	83501-KB7-000	BOX, TOOL					1	
		2	83504-KB7-000	CAP, TOOL BOX					1	
		3	83507-422-000	BODY, KEY					1	
		4	83508-438-000	STOPPER, KEY BODY					1	
		5	89010-KB7-000	TOOL SET					1	
		6	89215-KB7-000	SPANNER, 5.9X10					1	
		7	89216-KB7-000	SPANNER, 12X14					1	
		8	89217-KB7-000	WRENCH, BOX, P18					1	
		9	90512-300-000	WASHER, 6X20					1	
		10	90513-323-000	WASHER, 6X9					1	
		11	94101-03000	WASHER, PLAIN, 3MM					2	
		12	94201-30450	PIN, SPLIT, 3.0X45					1	
		13	94305-20141	PIN, SPRING, 2X14					1	
		14	95700-06016-00	BOLT, FLANGE, 6X16					2	
		15	99002-13500	PLIERS, 135					1	
		16	99003-10000	DRIVER 2, PLUS SCREW					1	
		17	99003-20000	DRIVER 3, PLUS SCREW					1	
		18	99003-30000	DRIVER 2, MINUS SCREW					1	

2-J10

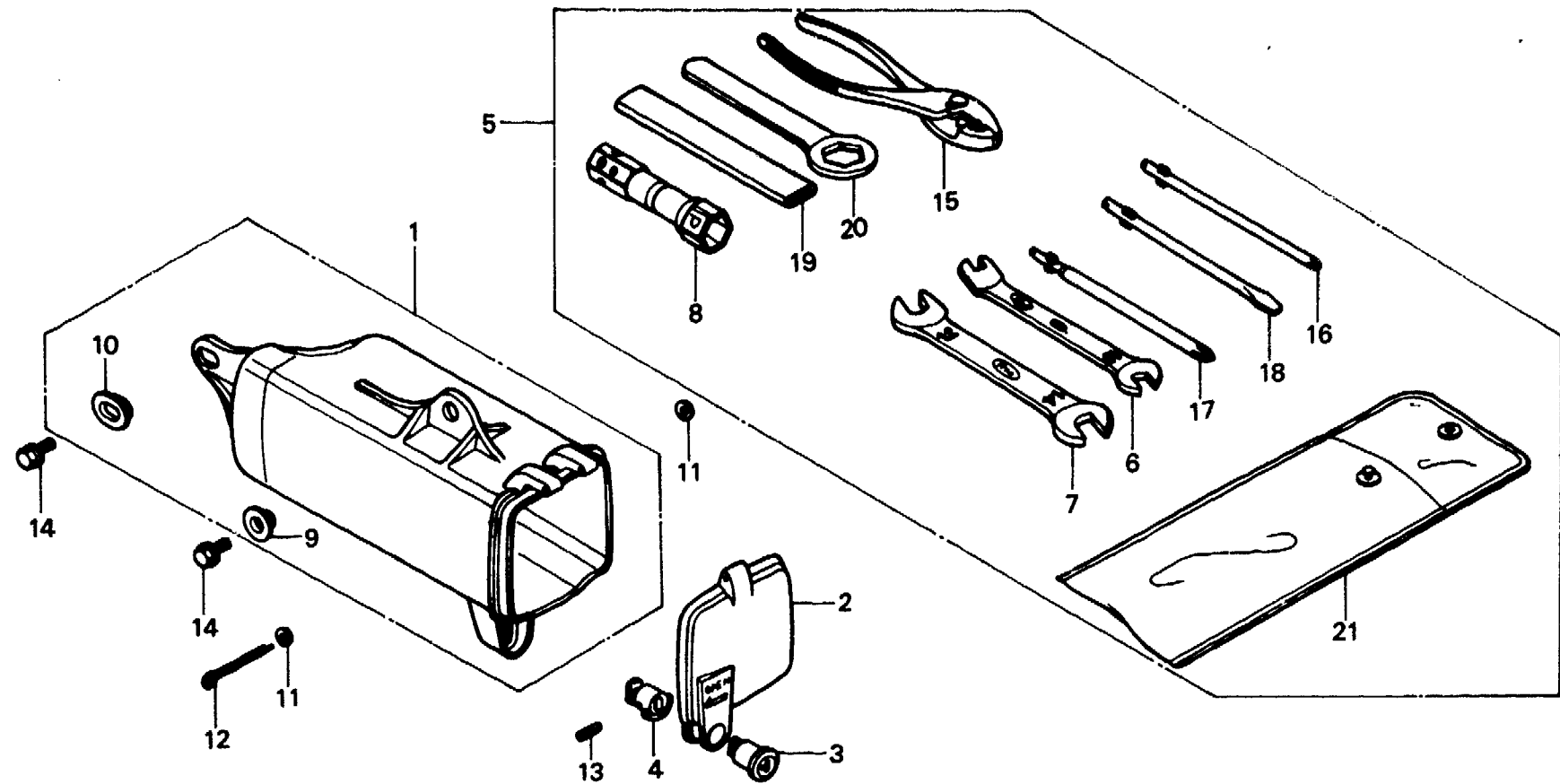
F-27-1

**Tool
(XL250Rc)**

**Outils
(XL250Rc)**

**Werkzeug
(XL250Rc)**

**Herramientas
(XL250Rc)**



BKB7-24

Service item	F.R.T.	Ref. No.	Part No.	Description	Reqd. No. XL250					Serial No.	Area code
					S	Sz	SA	Sa	Rc		
		19	99006-12000	HANDLE, EYE WRENCH, 120MM						1	
		20	99006-24000	WRENCH, EYE, 24MM						1	
		21	99008-01600	BAG, TOOL, 160MM						1	

1982.01.10

E

2-J10

2-J11

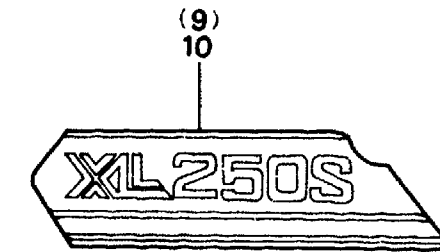
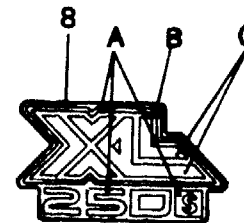
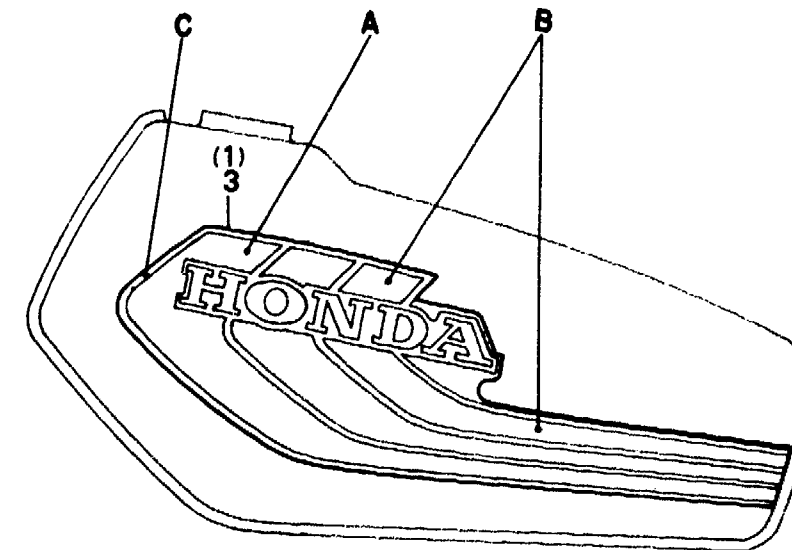
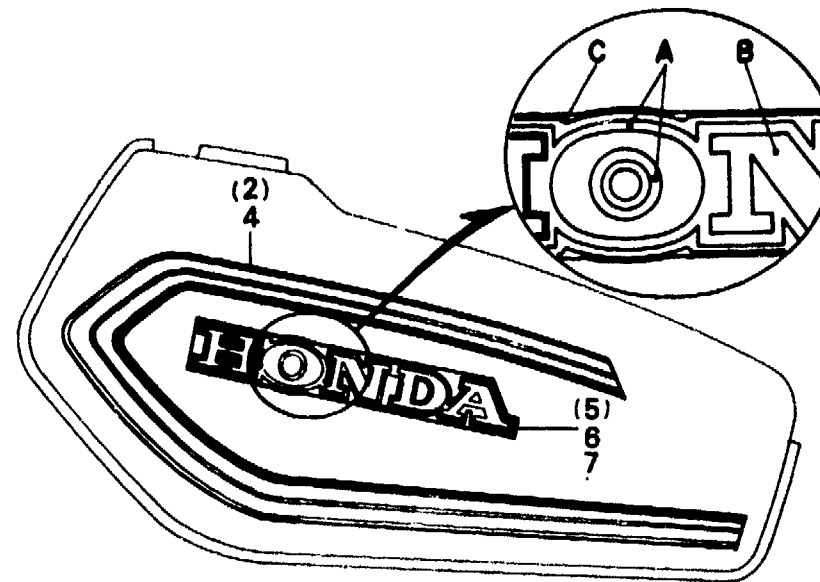
F-28

**Stripe • Emblem
(XL250S•Sz•SA)**

**Rayure • Embleme
(XL250S•Sz•SA)**

**Streifen • Emblem
(XL250S•Sz•SA)**

**Franja • Emblema
(XL250S•Sz•SA)**



B428-78A

Service item	F.R.T.	Ref. No.	Part No.	Description	Reqd. No.				Serial No.	Area code
					S	Sz	SA	Sb Rc		
		1	17506-428-300ZA	STRIPE, R. FUEL TANK (A.M.)	1					
				TYPE 1						
			17506-428-300ZB	STRIPE, R. FUEL TANK (A.M.)	1					
				TYPE 2						
			17506-428-300ZC	STRIPE, R. FUEL TANK (A.M.)	1					
				TYPE 3						
		2	17506-428-770	STRIPE, R. FUEL TANK (A.M.)		1				
		3	17506-428-870	STRIPE, R. FUEL TANK (A.M.)			1			CM
		3	17507-428-300ZA	STRIPE, L. FUEL TANK (A.M.)	1					
				TYPE 1						
			17507-428-300ZB	STRIPE, L. FUEL TANK (A.M.)	1					
				TYPE 2						
			17507-428-300ZC	STRIPE, L. FUEL TANK (A.M.)	1					
				TYPE 3						
		4	17507-428-770	STRIPE, L. FUEL TANK (A.M.)		1				
			17507-428-870	STRIPE, L. FUEL TANK (A.M.)			1			CM

Color chart for fuel tank stripe (XL250S)

Position		Fuel tank main color		
		A	B	C
Type of stripe	Fuel tank main color			
TYPE-1	Tahitian red	Blue	Yellow	White
TYPE-2	Ceramic white	Blue	Red	Dark Blue
TYPE-3	Dark blue	Red	Blue	Light Gray

1982.01.10

E

2-J11

2-J12

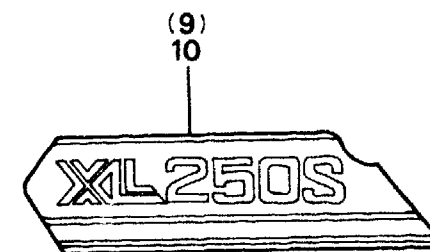
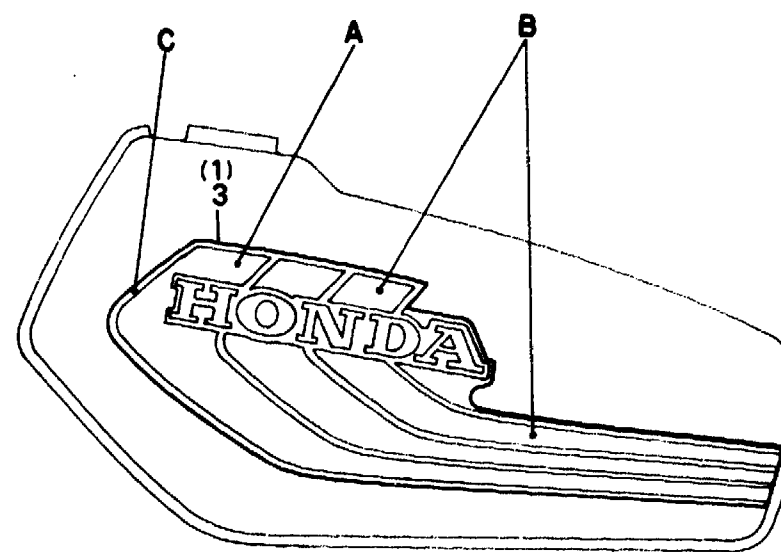
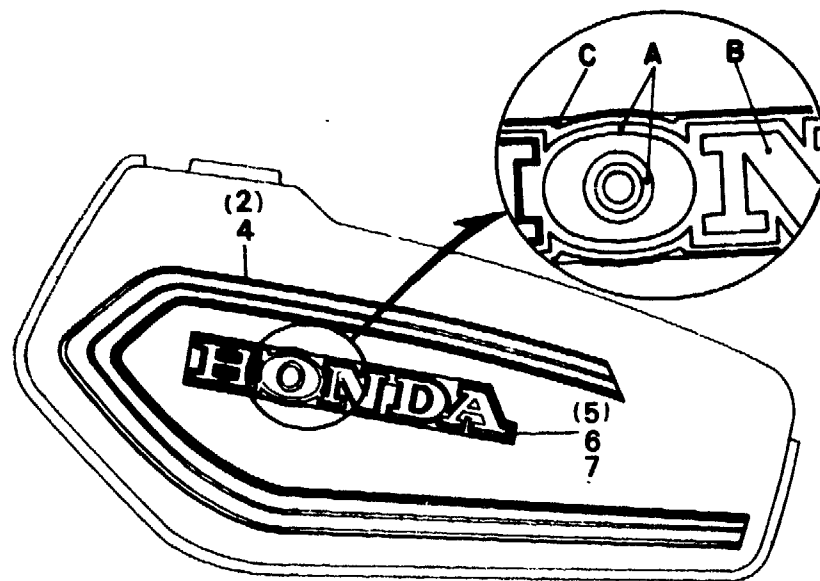
F-28

**Stripe • Emblem
(XL250S•Sz•SA)**

**Rayure • Embleme
(XL250S•Sz•SA)**

**Streifen • Emblem
(XL250S•Sz•SA)**

**Franja • Emblema
(XL250S•Sz•SA)**



B428-78A

Service item	F.R.T.	Ref. No.	Part No.	Description	Reqd. No.					Serial No.	Area code
					S	Sz	SA	Sb	Rc		
		5	17508-428-870	MARK, R. FUEL TANK						1	CM
		6	17509-428-870	MARK, L. FUEL TANK						1	CM
		7	87123-428-920ZA	EMBLEM, FUEL TANK (A.M.)						2	B,DK,DM,E,ED,F1,F2,G1
				TYPE 1							G2,SA,SD,SW,U
			87123-428-920ZB	EMBLEM, FUEL TANK (A.M.)						2	B,DK,DM,E,ED,F1,F2,G1
				TYPE 2							G2,SA,SD,SW,U
		8	87127-428-000ZB	EMBLEM, SIDE COVER *A-54*					2		
			87127-428-000ZC	EMBLEM, SIDE COVER *A-55*					2		
			87127-428-000ZA	EMBLEM, SIDE COVER *A-53*					2	2	
			87127-428-920ZA	EMBLEM, SIDE COVER (A.M.)						2	B,DK,DM,E,ED,F1,F2,G1
				TYPE 1							G2,SA,SD,SW,U
			87127-428-920ZB	EMBLEM, SIDE COVER (A.M.)						2	SA,SD,SW,U
				TYPE 2							
		9	87128-428-870	EMBLEM, R. SIDE COVER						1	CM

Color chart for fuel tank emblem (XL250SA)

Type of emblem	Fuel tank main color	Position		
		A	B	C
TYPE-1	Tahitian red	Black	Tahitian red	Tahitian red
TYPE-2	Ceramic white	Ceramic white	Tahitian red	Ceramic white

Color chart for side cover emblem

Type of emblem	Fuel tank main color	Position		
		A	B	C
TYPE-1	Tahitian red	White	Black	Orange
TYPE-2	Ceramic white	Black	White	Orange

1982.01.10

E

2-J12

2-J13

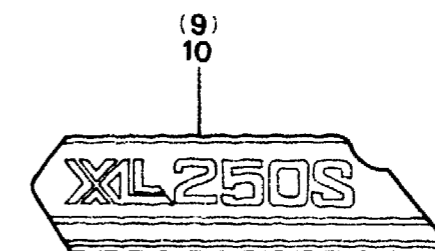
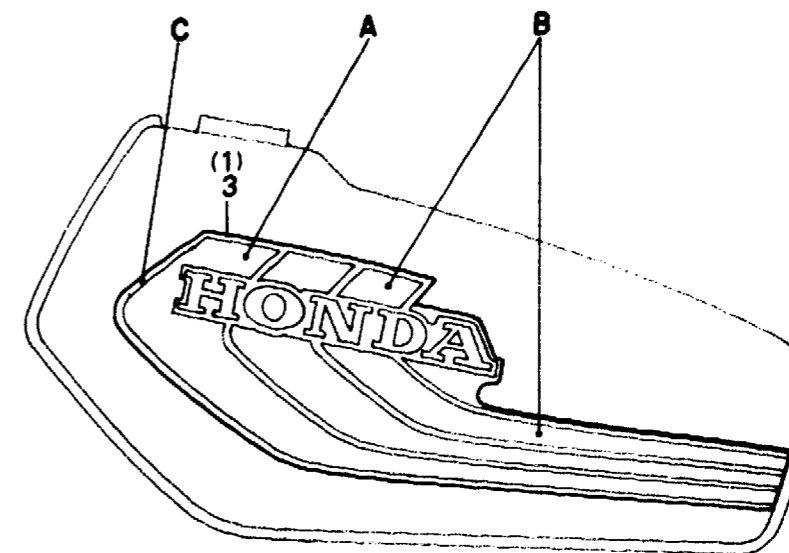
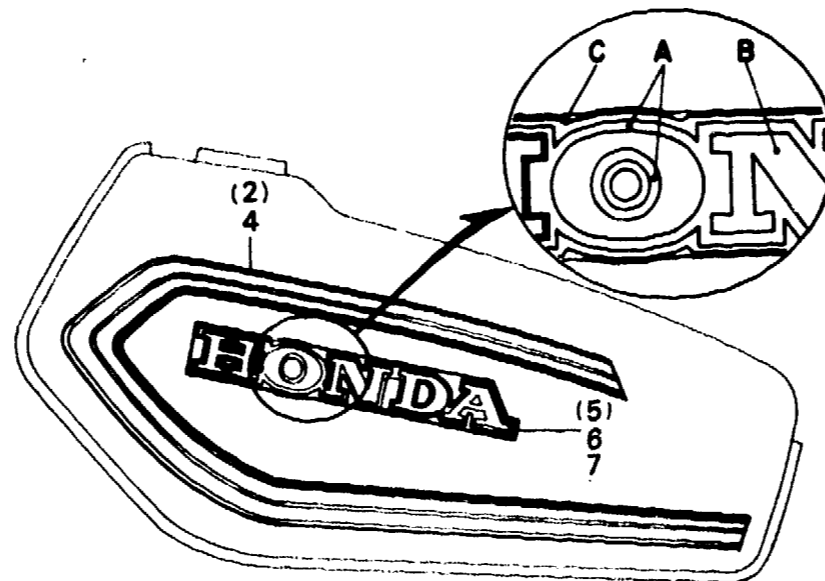
F-28

**Stripe • Emblem
(XL250S•Sz•SA)**

**Rayure • Embleme
(XL250S•Sz•SA)**

**Streifen • Emblem
(XL250S•Sz•SA)**

**Franja • Emblema
(XL250S•Sz•SA)**



B42E-78A

Service item	F.R.T.	Ref. No.	Part No.	Description	Reqd. No.				Serial No.	Area code
					S	Sz	SA	Sb		
		10	87129-428-870	EMBLEM, AIR CLEANER CASE COVER				1		CM

2-J14

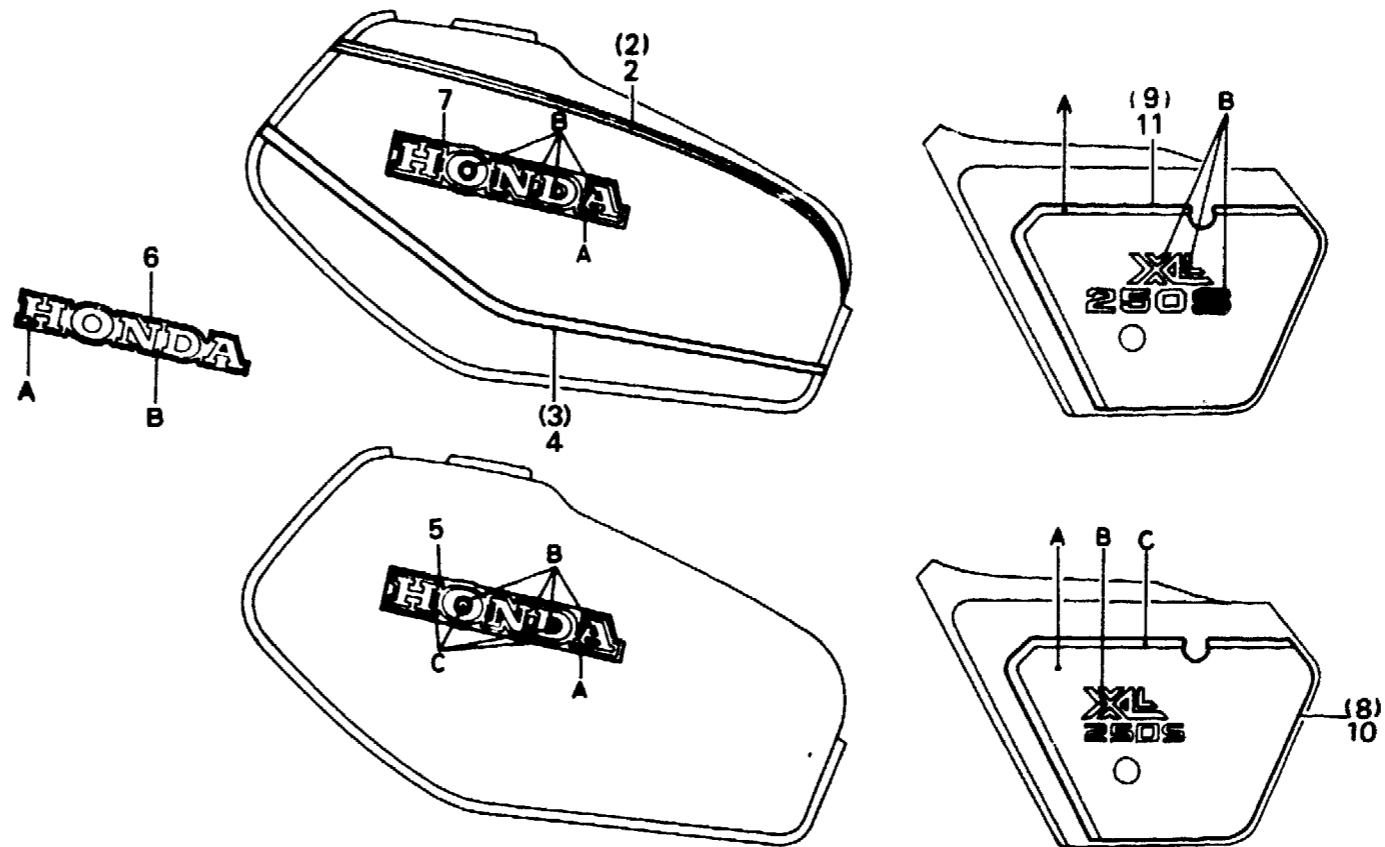
F-28-1

**Stripe • Emblem
(XL250SB)**

**Rayure • Embleme
(XL250SB)**

**Streifen • Emblem
(XL250SB)**

**Franja • Emblema
(XL250SB)**



B428-81

Service item	F.R.T.	Ref. No.	Part No.	Description	Reqd. No.					Serial No.	Area code
					S	Sz	SA	Sb	Rc		
		1	17506-428-730	STRIPE, R. UPPER FUEL TANK (A.M.)					1		CM
		2	17507-428-730	STRIPE, L. UPPER FUEL TANK (A.M.)					1		CM
		3	17508-428-730	STRIPE, R. LOWER FUEL TANK (A.M.)					1		CM
		4	17509-428-730	STRIPE, L. LOWER FUEL TANK (A.M.)					1		CM
		5	87123-435-760ZA	EMBLEM, FUEL TANK (A.M.) *TYPE 1*					2		B,DK,DM,E,ED,F1,F2,G1 G2,SA,SD,SW,U
			87123-435-760ZC	EMBLEM, FUEL TANK (A.M.) *TYPE 3*					2		B,DK,DM,E,ED,F1,F2,G1 G2,SA,SD,SW,U
		6	87124-435-760ZA	EMBLEM, FUEL TANK *TYPE-4*					2		B,DK,DM,E,ED,F1,F2,G1 G2,SA,SD,SW,U
		7	87123-459-770ZA	EMBLEM, MAIN PIPE COVER (A.M.) *TYPE 1*					2		CM
		8	87127-428-830ZA	EMBLEM, R. SIDE COVER (A.M.) *TYPE 1*					1		B,DK,DM,E,ED,F1,F2,G1 G2,SA,SD,SW,U
			87127-428-830ZB	EMBLEM, R. SIDE COVER (A.M.) *TYPE 2*					1		B,DK,DM,E,ED,F1,F2,G1 G2,SA,SD,SW,U

Color chart for fuel tank emblem

TYPE	Fuel tank main color	Position		
		A	B	C
TYPE 1	Monza red	Black	White	Monza red
TYPE 2	Pieladas silver metallic-U	Black	White	Pieladas silver metallic-U

1982.01.10

E

2-J14

2-J15

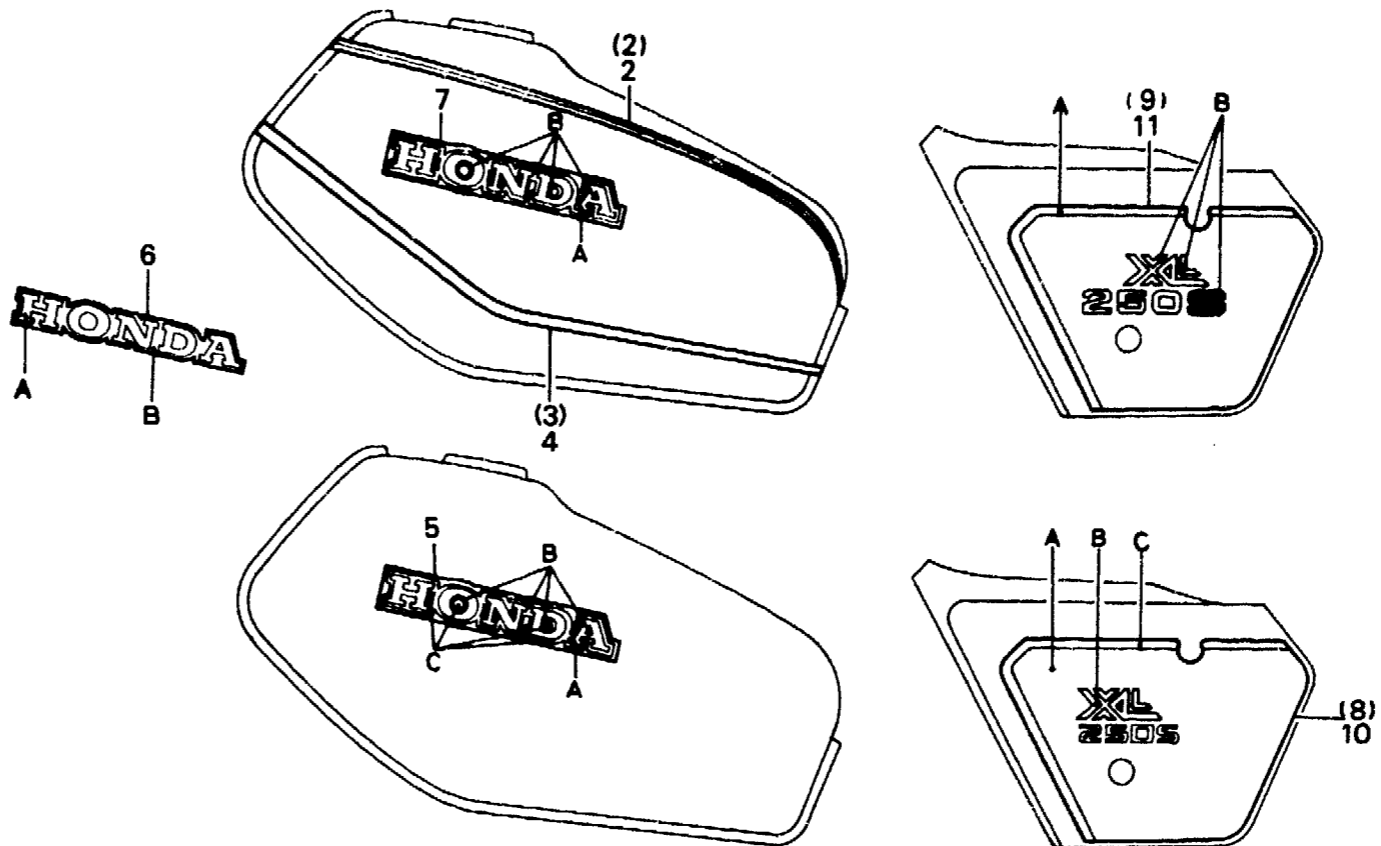
F-28-1

**Stripe • Emblem
(XL250Sb)**

**Rayure • Embleme
(XL250Sb)**

**Streifen • Emblem
(XL250Sb)**

**Franja • Emblema
(XL250Sb)**



B428-81

Service item	F.R.T.	Ref. No.	Part No.	Description	Reqd. No.					Serial No.	Area code
					S	Sz	SA	Sb	Rc		
		9	87128-428-730ZA	EMBLEM, R. SIDE COVER (A.M.) *TYPE 1*				1			CM
		10	87128-428-830ZA	EMBLEM, L. SIDE COVER (A.M.) *TYPE 1*				1			B,DK,DM,E,ED,F1,F2,G1 G2,SA,SD,SW,U
			87128-428-830ZB	EMBLEM, L. SIDE COVER (A.M.) *TYPE 2*				1			B,DK,DM,E,ED,F1,F2,G1 G2,SA,SD,SW,U
		11	87129-428-730ZA	EMBLEM, L. SIDE COVER (A.M.) *TYPE 1*				1			CM

Color chart for main pipe cover emblem

TYPE	Fuel tank main color	Position	
		A	B
TYPE 1	Monza red	Black	White

Color chart for side cover emblem

TYPE	Fuel tank main color	Position	
		A	B
TYPE 1	Monza red	Black	White

Color chart for side cover emblem

TYPE	Fuel tank main color	Position		
		A	B	C
TYPE 1	Monza red	Mat black	Red	
TYPE 2	Pleides silver metallic-U	Mat black	Red	Red

2-J16

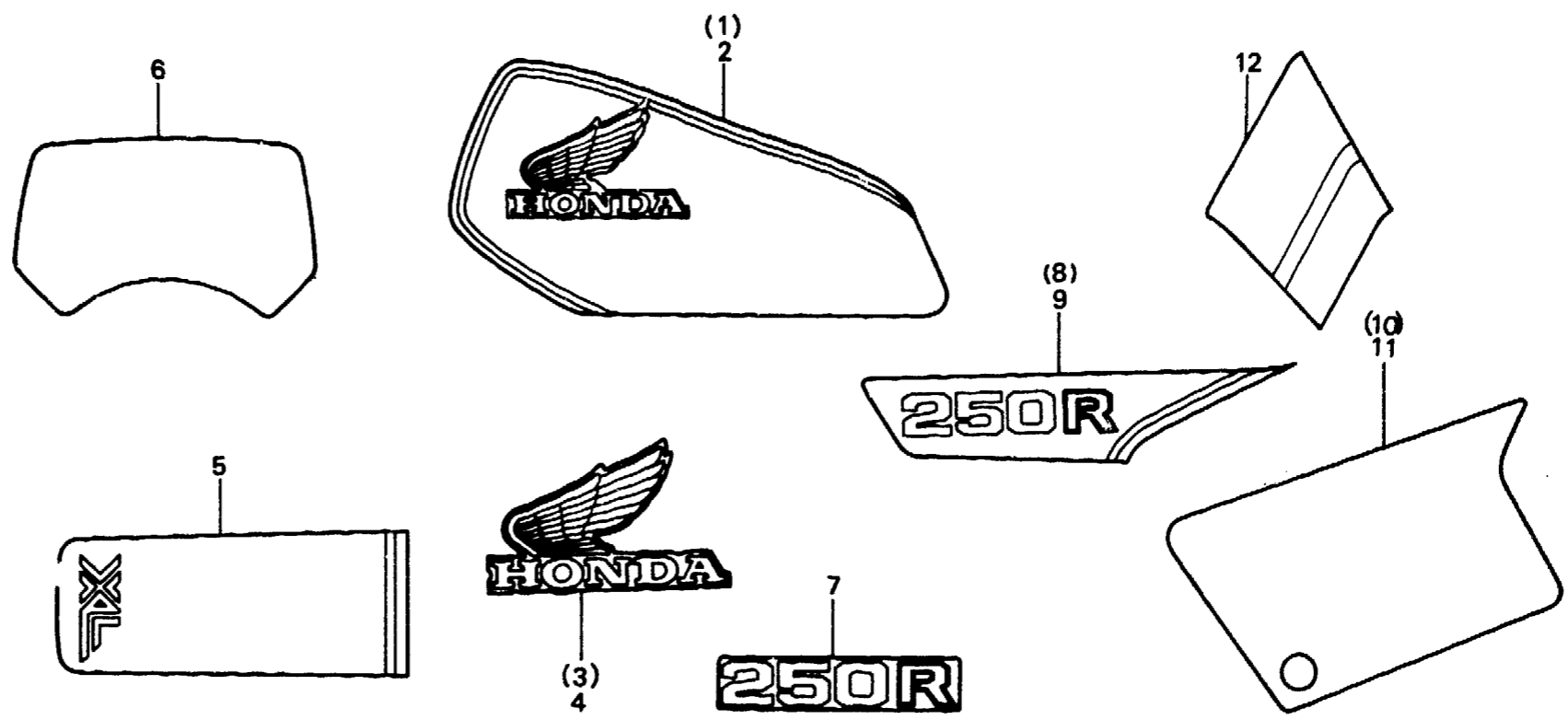
F-28-2

**Stripe • Emblem
(XL250Rc)**

**Rayure • Embleme
(XL250Rc)**

**Streifen • Emblem
(XL250Rc)**

**Franja • Emblema
(XL250Rc)**



BKB7-25

Service item	F.R.T.	Ref. No.	Part No.	Description	Reqd. No.				Serial No.	Area code
					S	Sz	SA	Sb		
		1	17506-KB7-300	STRIPE, R. FUEL TANK (A.M.)					1	B,DK,DM,E,ED,F1,F2,G1 G2,IT,SA,SD,SW,U
			17508-KB7-300	STRIPE, R. FUEL TANK (A.M.)					1	B,DK,DM,E,ED,F1,F2,G1 G2,IT,SA,SD,SW,U
		2	17507-KB7-300	STRIPE, L. FUEL TANK (A.M.)					1	B,DK,DM,E,ED,F1,F2,G1 G2,IT,SA,SD,SW,U
			17509-KB7-300	STRIPE, L. FUEL TANK (A.M.)					1	B,DK,DM,E,ED,F1,F2,G1 G2,IT,SA,SD,SW,U
		3	87122-KB7-670	MARK, R. FUEL TANK (A.M.)					1	
		4	87123-KB7-670	MARK, L. FUEL TANK (A.M.)					1	
		5	87124-KB7-600ZA	EMBLEM, FR. FENDER (A.M.)					1	B,DK,DM,E,F1,F2,G1,G2 IT,SA,SW,U
				TYPE 2-A					1	B,DK,DM,E,F1,F2,G1,G2 IT,SA,SW,U
			87124-KB7-600ZB	EMBLEM, FR. FENDER (A.M.)					1	B,DK,DM,E,F1,F2,G1,G2 IT,SA,SW,U
				TYPE 2-B					1	B,DK,DM,E,F1,F2,G1,G2 IT,SA,SW,U
			87124-KB7-610	EMBLEM, FR. FENDER (A.M.)					1	B,DK,DM,E,F1,F2,G1,G2 IT,SA,SW,U
		6	87125-KB7-300	SHEET, FR. VISOR (A.M.)					1	B,DK,DM,E,ED,F1,F2,G1 G2,IT,SA,SD,SW,U

Combination table for front fender main color and front fender emblem

Main color	Ceramic white	Pleated silver metallic-U	Monoc red
87124-KB7-600ZA	•		
87124-KB7-600ZB		•	
87124-KB7-610			•

1982.01.10

E

2-J16

2-K1

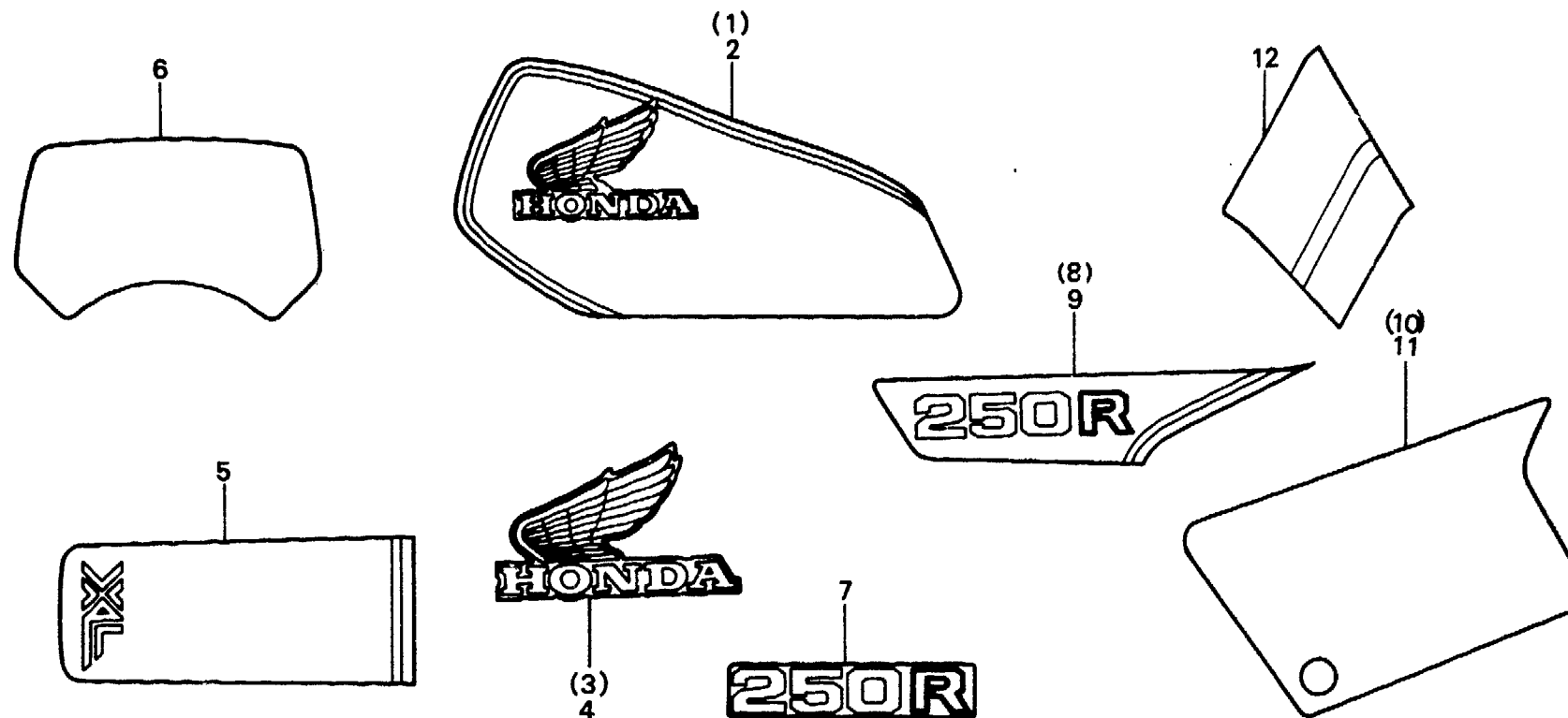
F-28-2

**Stripe • Emblem
(XL250Rc)**

**Rayure • Embleme
(XL250Rc)**

**Streifen • Emblem
(XL250Rc)**

**Franja • Emblema
(XL250Rc)**



BKB7-25

Service item	F.R.T.	Ref. No.	Part No.	Description	Reqd. No.					Serial No.	Area code
					S	Sz	SA	Sb	Rc		
			87125-KB7-680	SHEET, FR. VISOR (A.M.)					(1)		DK,DM,SA,U
		7	87126-KB7-300	EMBLEM, SIDE COVER (A.M.)					2		
		8	87126-KB7-600	EMBLEM, R. SIDE COVER (A.M.)					1		B,DK,DM,E,ED,F1,F2,G1 G2,IT,SA,SD,SW,U
		9	87127-KB7-600	EMBLEM, L. SIDE COVER (A.M.)					1		B,DK,DM,E,ED,F1,F2,G1 G2,IT,SA,SD,SW,U
		10	87128-KB7-300	EMBLEM B, R. SIDE COVER (A.M.)					1		
		11	87129-KB7-300	EMBLEM B, L. SIDE COVER (A.M.)					1		
		12	87130-KB7-600	STRIPE, RR. FENDER (A.M)					1		B,DK,DM,E,ED,F1,F2,G1 G2,IT,SA,SD,SW,U



Part No. Address No.
 N° de pièce N° de Adresse
 Teile-Nr. Adresse-Nr.
 No. de pieza No. de direccion

90563-045-000
 90601-107-000
 90601-329-000
 90601-393-000
 90601-428-000
 90602-428-000
 90605-200-000
 90665-329-000
 90701-471-000
 90705-428-010
 90841-001-000
 90899-283-000
 91000
 91001-428-003
 91001-471-003
 91001-471-008
 91002-428-003
 91002-471-003
 91002-471-008
 91007-393-003
 91008-362-000
 91011-428-008
 91011-473-000
 91012-428-008
 91012-473-000
 91014-428-008
 91015-425-831
 91015-425-832
 91020-428-006
 91022-415-008
 91022-426-008
 91071-MA0-003
 91071-MA0-004
 91101-428-000
 91201-148-003
 91201-148-005
 91201-362-000
 91201-428-005
 91201-434-003
 91201-434-005
 91204-286-003
 91204-286-005
 91206-KB7-005
 91206-428-005
 91251-121-000
 91251-121-003
 91251-361-005
 91252-MC4-003
 91252-MC4-005
 91252-428-000
 91254-430-003
 91254-430-005
 91254-434-003
 91254-435-003

K10
 2-F15 91255-400-771
 E14
 F1 91255-434-003
 F12 91255-434-013
 E14
 F1
 E1 91261-MA0-003
 F2 91261-MA0-005
 E8 91262-MA0-003
 E10 91262-MA0-005
 M8 91262-329-010
 D15 91301-028-000
 E14
 F2 91301-200-000
 2-J3 91301-428-003
 2-J7 91301-469-003
 2-I9 91301-473-003
 91302-216-000
 91302-317-700
 E4 91302-428-000
 E4 91303-377-000
 E4
 E4 91303-428-003
 E5 91305-323-000
 E5 91305-419-670
 E14
 F2
 F6 91307-035-000
 F9 91312-107-000
 E8
 E14 91333-422-003
 E10 91351-KB7-003
 E8 91356-428-003
 E14
 E10
 E14
 K12 91461-KB7-000
 K12 91461-428-000
 E15 91462-393-780
 E15
 F2
 2-F3 91463-393-780
 2-F3
 C3
 C14
 D3
 D3 92000
 D12
 D15 92000-05020-0A
 C3
 2-E14 92000-06008
 2-E14
 D3
 D3
 F2
 E15 92000-06010
 M2
 M3 92000-06012
 M3
 M11
 M11 92000-06016
 M8 92000-06028
 L15
 L16
 L15 92000-06028-0A
 L16 92000-06035
 L7 92025-06025
 L10 92200-06028
 K14 92200-10060-0A

L2 92300-06016-0A
 K16 92700-06035
 L4 92700-06035-0E
 L4
 K16
 L7 92700-08045-1B
 L10 92800-12000
 2-F10
 2-F10
 2-F10 93000
 2-F10
 M9 93481-06012-07
 D12 93481-06016-00
 D15
 C8 93491-08020-08
 C8 93500-03008-0H
 L10
 D9
 D15 93500-03020-0A
 C8
 M11 93500-04008-0H
 C8 93500-05008-0A
 D12 93500-05008-0H
 D15 93500-05010-0A
 C14 93500-05012-0A
 C16
 N15
 2-C11 93500-05012-1A
 2-C14 93500-05016-0A
 D3
 D9
 D12
 C4
 2-F10
 K16
 E8
 L4
 L7
 L10 93500-05016-0B
 N6
 N4
 N15 93500-05018-0A
 2-C11 93500-05020-0A
 2-C14
 N15 93500-05025-0G
 2-C6
 2-C11
 2-C14
 93500-05028-0A
 93500-05030-0A
 2-I3
 2-I5 93500-05040-0A
 K16 93500-06008
 L4 93500-06010
 L7 93500-06012
 L11 93500-06012-00
 2-E14 93500-06014
 E15
 F2 93500-06018
 D12
 D15 93500-06025
 E1
 F12
 D9
 2-D14 93500-06028
 2-E7
 2-E2 93500-06040
 D9
 D7 93600-05010-0H
 F6
 2-J3

2-C14 93600-06012
 C8
 C8 93600-06020
 L8 93700-05016-0A
 L11
 C8 93700-06022
 D12 93891-04012-08
 D15 93891-04016-00
 93891-04020-08
 93891-04025-10
 2-D6
 2-F15
 2-F16 93891-06010-00
 E9 93891-06012-00
 F15 93891-06012-07
 G4 93892-04008-08
 G8
 L8
 L11 93892-04012-08
 2-H3
 K12
 H3 93892-04016-08
 H5
 J16
 K7 93892-05010-08
 K10
 D9
 J16 93892-05016-08
 K7 93893-05018-00
 2-F16 93901-14110
 2-G4
 2-G12
 2-G16
 2-H3 93901-14120
 2-H6 93901-24610
 2-I12
 H3
 H6
 H8
 L11 93901-26110
 J2 93901-34480
 J6
 C9 93901-34520
 N16
 2-C6
 2-C11 93903-36220
 2-C14
 J3
 J3 94000
 J6
 2-E14 94001-05000-05
 2-F3 94001-06000
 2-G4
 2-G4
 H11
 K10
 2-G4
 D12
 D15 94001-08000-05
 J3
 J6
 2-D10
 2-D14
 2-G4
 J3
 J6 94001-10000-05
 D15
 D15
 F15 94001-12000-05
 G4 94002-08000-05
 G8

F6 94002-10000-05
 F9
 D15
 M2 94012-10200-05
 M4 94021-05020-05
 C4 94021-05070-05
 2-C7 94021-06000
 2-C14
 N16
 2-C11
 K16
 L4 94021-06000-05
 L8 94021-08000-05
 2-D3
 2-D4 94030-10000
 18
 F15 94031-10000
 G4
 G8 94050-04000
 F15
 G5
 G8 94050-05000
 F15 94050-06000
 G5
 G8
 F15
 G5
 G8
 F15
 2-I5
 H3
 H5
 H6
 H8
 I10
 2-G12
 2-G16
 2-H3
 2-H6 94050-06080
 2-H10 94050-08000
 2-F3
 I5
 I10
 N16
 2-C7
 2-C11
 2-C15
 2-I14
 94050-10000
 L11
 J3
 J6
 K10 94050-12000
 N7 94071-08080
 2-D10 94101-03000
 2-D14 94101-05000
 2-E3 94101-06000
 2-E7
 I13
 M9
 M11
 2-E14
 2-J3
 2-H3
 2-H6
 2-H10
 2-J7
 F12

2-F6
 2-G12
 2-H10
 M14
 2-I3
 J7
 13
 15
 I10
 I13
 2-J3
 18
 2-J4
 2-J7
 2-D10
 2-D15
 2-E3
 2-E7
 L1
 L4
 L8
 2-G3
 I3
 I5
 L8
 L11
 M2
 M4
 M13
 M15
 2-D4
 2-D6
 2-F3
 2-F16
 2-G4
 2-H14
 2-I1
 2-I9
 N9
 C9
 J16
 K3
 K7
 M9
 2-D4
 2-D6
 2-E15
 2-G1
 2-G4
 2-J4
 2-F3
 2-G12
 2-G16
 2-J4
 M2
 C9
 2-J9
 2-E15
 K10
 2-D15
 2-E3
 2-E7
 2-E15
 2-F3
 2-F12
 2-G1
 2-G4
 2-I12

