

K 11

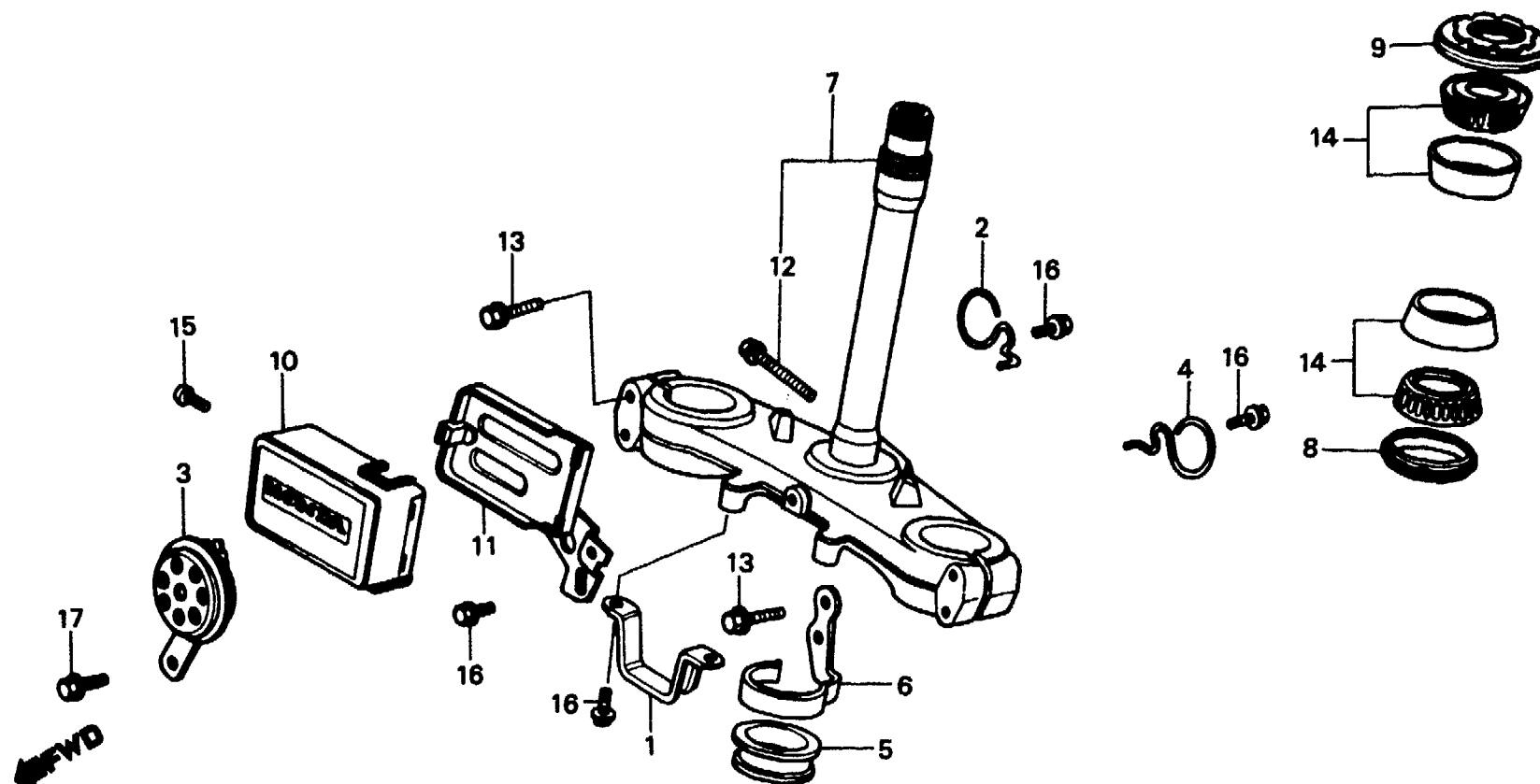
F-7

**Steering stem • Horn
(XL250Rc)**

**Tige de direction • Avertisseur
(XL250Rc)**

**Steuerkopfschaft • Hupe
(XL250Rc)**

**Varilla de dirección • Bocina
(XL250Rc)**



BKB7-5

Service item	F.R.T.	Ref. No.	Part No.	Description	Reqd. No.					Serial No.	Area code
					S	Sz	SA	Sb	Rc		
HORN COMP.	0.1	1	32811-MC4-630	CLAMP, WIRE HARNESS					1		ED,SD
BOX COMP., COUPLER SETTING		2	37261-KB7-000	CLAMP, TACHOMETER CABLE					1		B,DK,DM,E,ED,F1,F2,G1
STEM COMP., STEERING	1.2										G2,IT,SA,SD,SW,U
THREAD ASSY., STEERING	0.5	3	38110-KB7-004	HORN COMP.					1		CM,DK,DM,SA,U
BEARING, HEAD PIPE UPPER (ONE OR ALL)	0.8		38110-MC4-620	HORN COMP.					1		B,E,ED,F1,F2,G1,G2,IT
		4	45465-KB7-000	CLAMP, SPEEDOMETER CABLE					1		SD,SW
		5	45466-KA4-000	INNER, CABLE GUIDE					1		
		6	45468-KB7-000	GUIDE, BRAKE CABLE BOTTOM					1		
		7	53200-KB7-000	STEM COMP., STEERING					1		
		8	53214-KA4-701	DUST SEAL, STEERING HEAD					1		
		9	53220-KA2-000	THREAD ASSY., STEERING					1		
		10	61305-KB7-000	CASE, COUPLER					1		

K 12

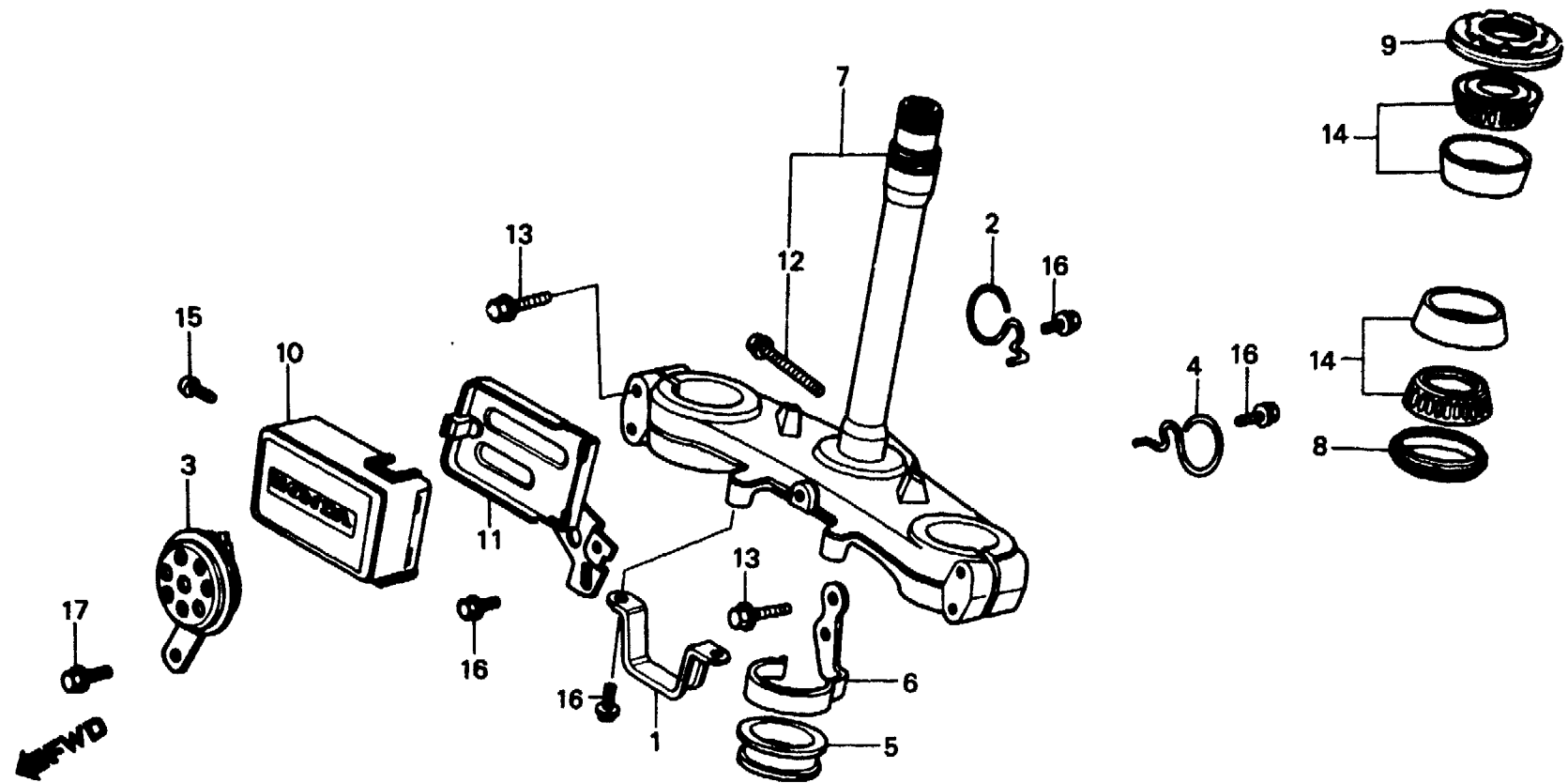
F-7

**Steering stem • Horn
(XL250Rc)**

**Tige de direction • Avertisseur
(XL250Rc)**

**Steuerkopfschaft • Hupe
(XL250Rc)**

**Varilla de dirección • Bocina
(XL250Rc)**



BKB7-5

Service item	F.R.T.	Ref. No.	Part No.	Description	Reqd. No.					Serial No.	Area code
					S	Sz	SA	Sb	Rc		
		11	62100-KB7-000	BOX COMP., COUPLER SETTING					1		
		12	90086-444-000	BOLT, FLANGE, 10X45					1		
		13	90103-KB7-000	BOLT, FLANGE, 8X45					4		
		14	91015-425-831	BEARING, HEAD PIPE UPPER (TOYO)					2		
			91015-425-832	BEARING, HEAD PIPE UPPER (NACHI)					2		
		15	93500-05008-0A	SCREW, PAN, 5X8					1		
		16	95700-06012-00	BOLT, FLANGE, 6X12					3		B,DK,DM,E,F1,F2,G1,G2 IT,SA,SW,U
									2		CM
									5		ED,SD
		17	95700-08012-00	BOLT, FLANGE, 8X12					1		

1982.01.10

E

K12

K 13

F-8

Front fork

(XL250S·Sz·SA·B,DK,DM,E,ED,
F1,F2,G1,G2,SA,SD,SW,U)

Fourche avant

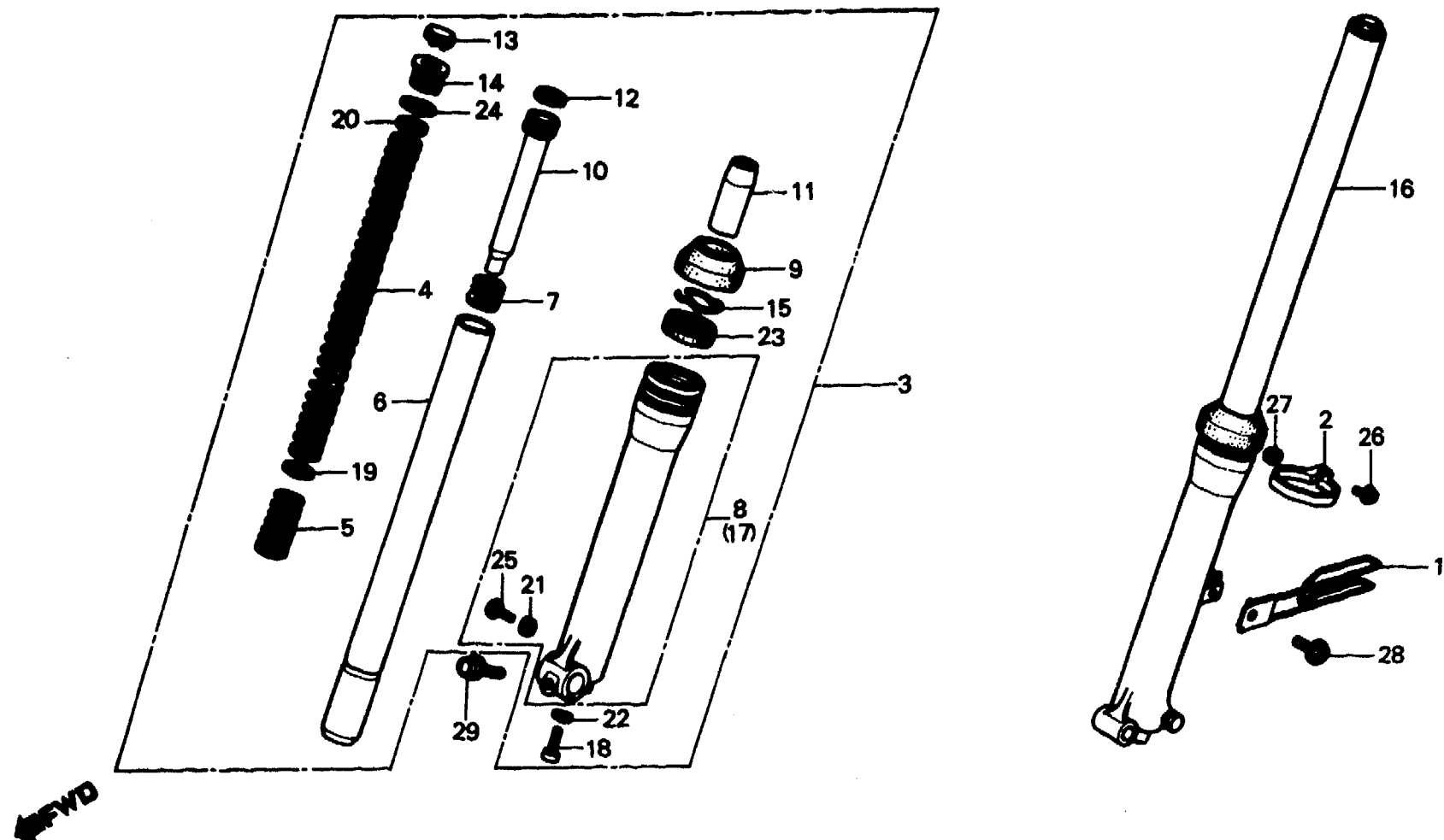
(XL250S·Sz·SA·B,DK,DM,E,ED,
F1,F2,G1,G2,SA,SD,SW,U)

Vordergabel

(XL250S·Sz·SA·B,DK,DM,E,ED,
F1,F2,G1,G2,SA,SD,SW,U)

Horquilla delantero

(XL250S·Sz·SA·B,DK,DM,E,ED,
F1,F2,G1,G2,SA,SD,SW,U)



B428-22C

Service item	F.R.T.	Ref. No.	Part No.	Description	Reqd. No.					Serial No.	Area code
					S	Sz	SA	Sb	Rc		
FORK ASSY., FR. (ADD 0.2 FOR EACH.)	0.5	1	44832-428-000	CLAMP, SPEEDOMETER	1	1					B,DK,DM,E,ED,F1,F2,G1
SPRING A, FR. CUSHION	0.2		44832-428-870	CLAMP, SPEEDOMETER				1			G2,SA,SD,SW,U
PIPE COMP., FR. FORK (ADD 0.3 FOR EACH.)	0.7	2	45469-428-000	GUIDE C, BRAKE CABLE	1	1					CM
OIL SEAL, 35X48X14 (ADD 0.4 FOR EACH.)					1	1					B,DK,DM,E,ED,F,F1,F2
CASE COMP., BOTTOM (ADD 0.3 FOR EACH.)	0.8	3	51400-428-003	FORK ASSY., R. FR.	1	1					G,G1,G2,SA,SD,SW,U
			51400-428-930	FORK ASSY., R. FR.				1			B,DK,DM,E,ED,F1,F2,G1
		4	51401-428-003	SPRING A, FR. CUSHION	2	2					G2,SA,SD,SW,U
			51401-428-871	SPRING, FR. CUSHION				2			B,DK,DM,E,ED,F1,F2,G1
		5	51402-428-003	SPRING B, FR. CUSHION	2	2					G2,SA,SD,SW,U
		6	51410-428-003	PIPE COMP., FR. FORK	2	2					CM
					2	2					B,DK,DM,E,ED,F,F1,F2
		7	51412-340-000	SPRING, FR. FORK REBOUND	2	2					G,G1,G2,SA,SD,SW,U
					2	2		2			CM
											B,DK,DM,E,ED,F,F1,F2
											G,G1,G2,SA,SD,SW,U

1982.01.10

E

K13

K 14

F-8

Front fork

(XL250S-Sz-SA-B,DK,DM,E,ED,
F1,F2,G1,G2,SA,SD,SW,U)

Fourche avant

(XL250S-Sz-SA-B,DK,DM,E,ED,
F1,F2,G1,G2,SA,SD,SW,U)

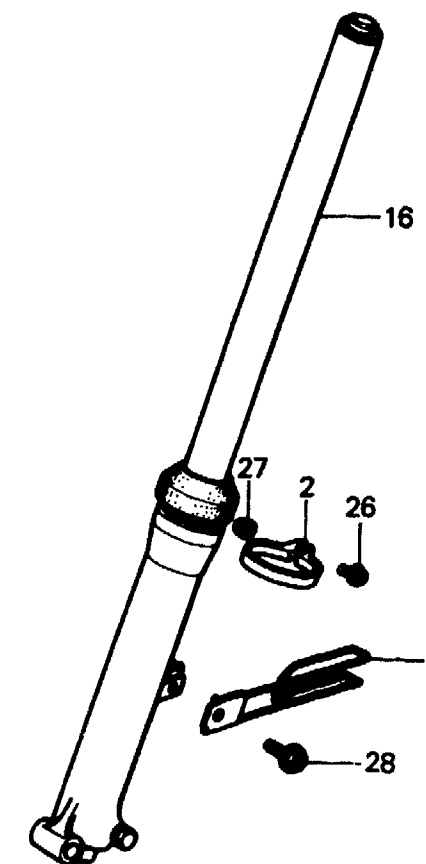
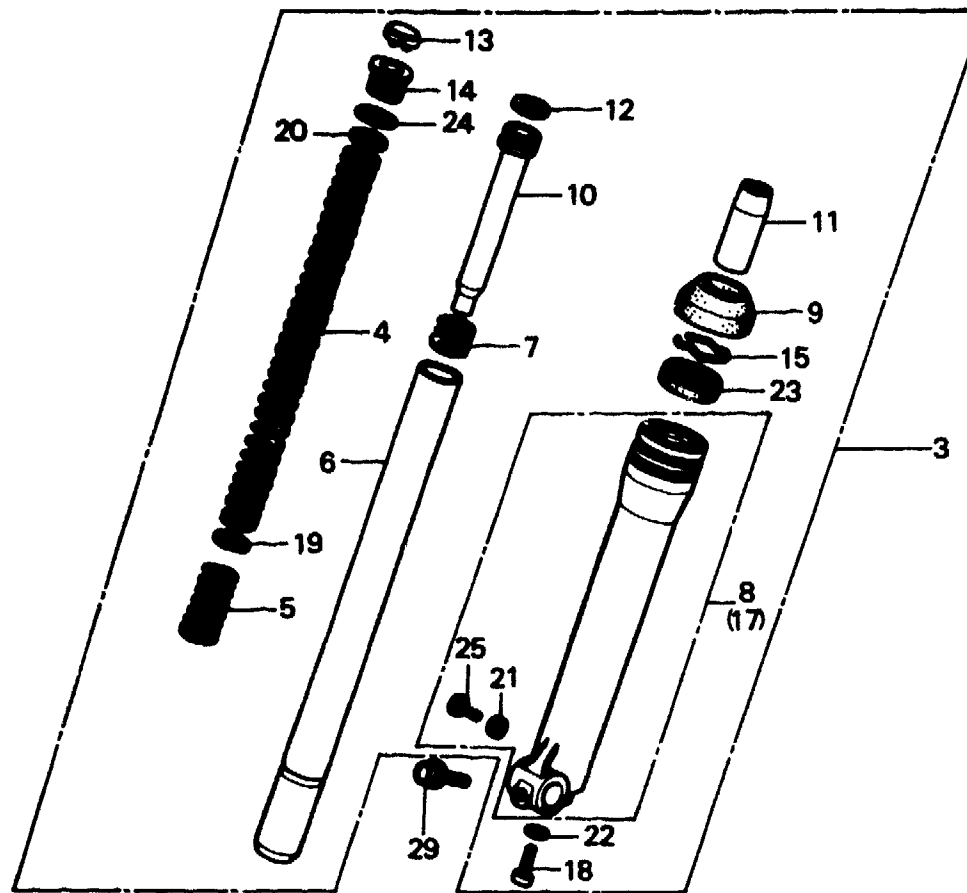
Vordergabel

(XL250S-Sz-SA-B,DK,DM,E,ED,
F1,F2,G1,G2,SA,SD,SW,U)

Horquilla delantero

(XL250S-Sz-SA-B,DK,DM,E,ED,
F1,F2,G1,G2,SA,SD,SW,U)

←FWD



B428-22C

Service item	F.R.T.	Ref. No.	Part No.	Description	Reqd. No.				Serial No.	Area code
					S	Sz	SA	Ss		
		8	51420-428-003	CASE COMP., R. BOTTOM	1	1				
			51420-428-013	CASE COMP., R. BOTTOM			1			B,DK,DM,E,ED,F1,F2,G1 G2,SA,SD,SW,U
		9	51425-340-000	DUST SEAL, FR. FORK	2	2				
			91254-435-003	DUST SEAL, FR. FORK			2			B,DK,DM,E,ED,F1,F2,G1 G2,SA,SW,U
		10	51430-428-003	PIPE, BOTTOM	2	2				
			51430-428-871	PIPE, SEAT			2			B,DK,DM,E,ED,F1,F2,G1 G2,SA,SD,SW,U
		11	51432-371-003	PIECE, OIL LOCK	2	2				CM
					2		2			B,DK,DM,E,ED,F,F1,F2 G,G1,G2,SA,SD,SW,U
		12	51437-400-771	RING, PISTON	2	2				CM
					2		2			B,DK,DM,E,ED,F,F1,F2 G,G1,G2,SA,SD,SW,U
		13	51449-428-003	CAP, FORK PIPE	2	2				CM
					2		2			B,DK,DM,E,ED,F,F1,F2 G,G1,G2,SA,SD,SW,U

K 15

F-8

Front fork

(XL250S-Sz-SA-B,DK,DM,E,ED,
F1,F2,G1,G2,SA,SD,SW,U)

Fourche avant

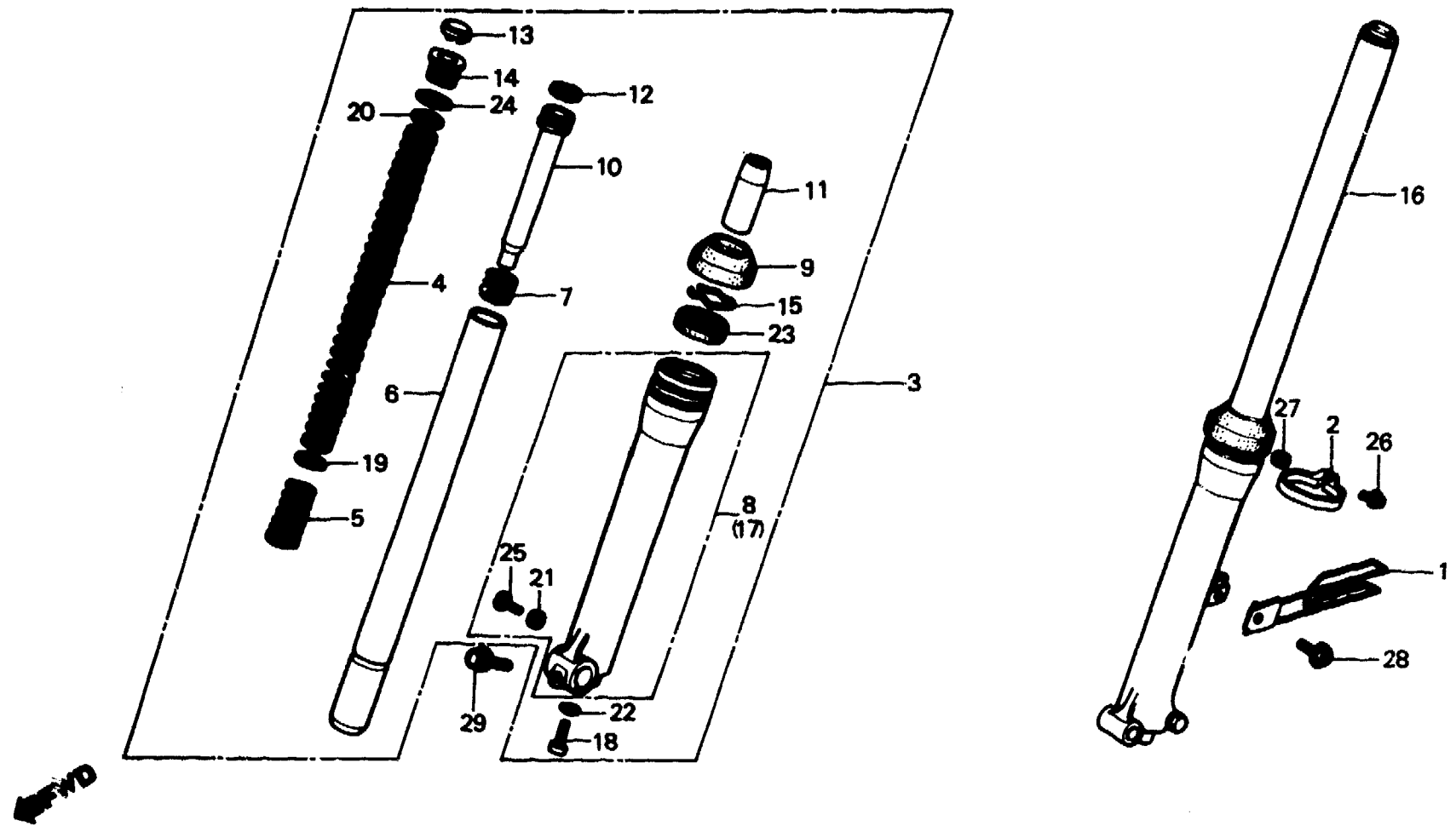
(XL250S-Sz-SA-B,DK,DM,E,ED,
F1,F2,G1,G2,SA,SD,SW,U)

Vordergabel

(XL250S-Sz-SA-B,DK,DM,E,ED,
F1,F2,G1,G2,SA,SD,SW,U)

Horquilla delantero

(XL250S-Sz-SA-B,DK,DM,E,ED,
F1,F2,G1,G2,SA,SD,SW,U)



B428-22C

Service item	F.R.T.	Ref. No.	Part No.	Description	Reqd. No.				Serial No.	Area code
					S	Sz	SA	Ss		
		14	51454-428-003	BOLT, FR. FORK	2	2				CM B,DK,DM,E,ED,F,F1,F2 G,G1,G2,SA,SD,SW,U
		15	51466-375-000	RING, OIL SEAL STOPPER	2	2				CM B,DK,DM,E,ED,F,F1,F2 G,G1,G2,SA,SD,SW,U
		16	51500-428-003 51500-428-930	FORK ASSY., L. FR. FORK ASSY., L. FR.	1	1		1		B,DK,DM,E,ED,F1,F2,G1 G2,SA,SD,SW,U
		17	51520-428-003 51520-428-013	CASE COMP., L. BOTTOM CASE COMP., L. BOTTOM	1	1		1		B,DK,DM,E,ED,F1,F2,G1 G2,SA,SD,SW,U
		18	90116-283-010	BOLT, SOCKET, 8MM	2	2				CM B,DK,DM,E,ED,F,F1,F2 G,G1,G2,SA,SD,SW,U
		19	90504-356-000	WASHER, 16MM	2	2				B,DK,DM,E,ED,F1,F2,G1 G2,SA,SW,U
		20	90504-425-003	WASHER, FR. FORK					2	

K 16

F-8

Front fork

(XL250S·Sz·SA·B,DK,DM,E,ED,
F1,F2,G1,G2,SA,SD,SW,U)

Fourche avant

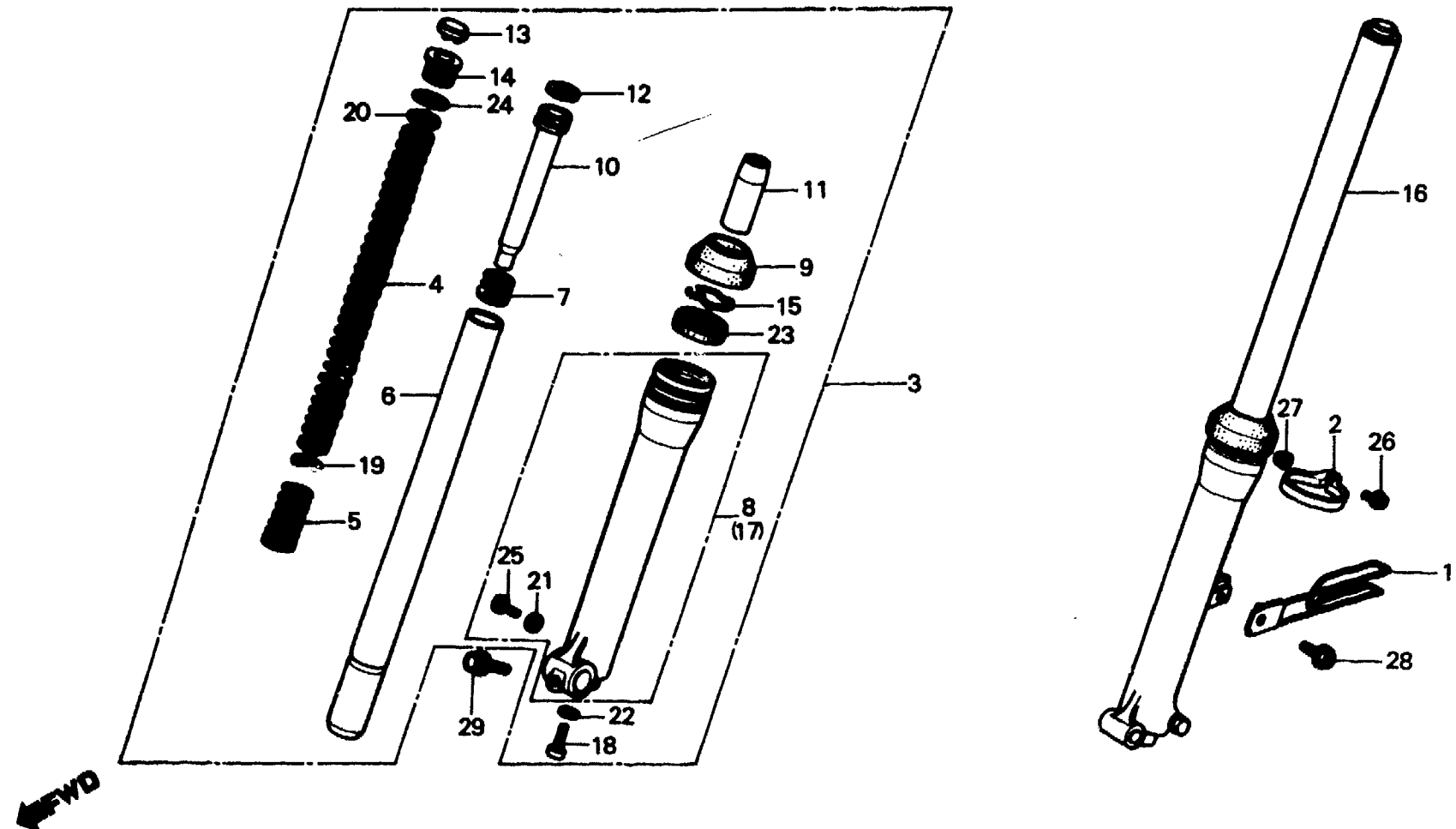
(XL250S·Sz·SA·B,DK,DM,E,ED,
F1,F2,G1,G2,SA,SD,SW,U)

Vordergabel

(XL250S·Sz·SA·B,DK,DM,E,ED,
F1,F2,G1,G2,SA,SD,SW,U)

Horquilla delantera

(XL250S·Sz·SA·B,DK,DM,E,ED,
F1,F2,G1,G2,SA,SD,SW,U)



B428-22C

Service item	F.R.T.	Ref. No.	Part No.	Description	Reqd. No.				Serial No.	Area code
					S	Sz	SA	Sb		
		21	90543-273-000	PACKING, FR. FORK DRAIN COCK	2	2				CM B,DK,DM,E,ED,F,F1,F2 G,G1,G2,SA,SD,SW,U
		22	90544-283-000	WASHER, SPECIAL, 8MM	2	2				CM B,DK,DM,E,ED,F,F1,F2 G,G1,G2,SA,SD,SW,U
		23	91255-400-771 91255-434-013	OIL SEAL, 35X48X14 OIL SEAL, 35X48X11	2	2		2		B,DK,DM,E,ED,F1,F2,G1 G2,SA,SW,U
		24	91356-428-003	O-RING, 25.7X28	2	2		2		CM B,DK,DM,E,ED,F,F1,F2 G,G1,G2,SA,SD,SW,U
		25	92000-06008	BOLT, HEX., 6X8	2	2		2		CM B,DK,DM,E,ED,F,F1,F2 G,G1,G2,SA,SD,SW,U
		26	93891-04025-10	SCREW-WASHER, 4X25	1	1		1		CM B,DK,DM,E,ED,F,F1,F2 G,G1,G2,SA,SD,SW,U

L 1

F-8

Front fork

(XL250S-Sz-SA-B,DK,DM,E,ED,
F1,F2,G1,G2,SA,SD,SW,U)

Fourche avant

(XL250S-Sz-SA-B,DK,DM,E,ED,
F1,F2,G1,G2,SA,SD,SW,U)

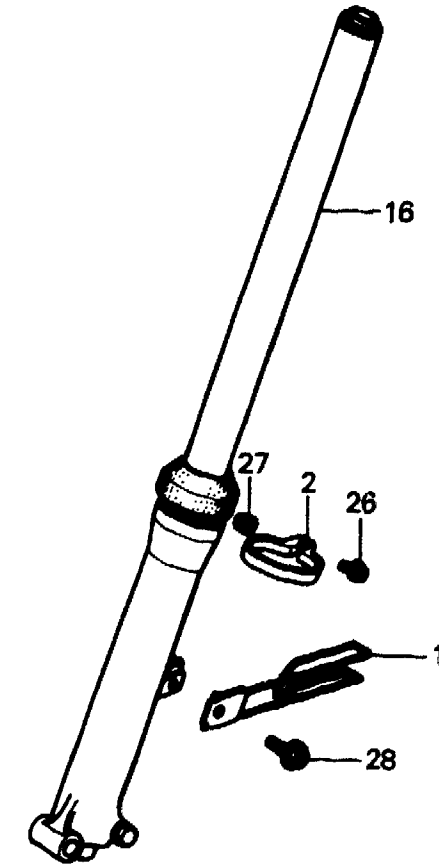
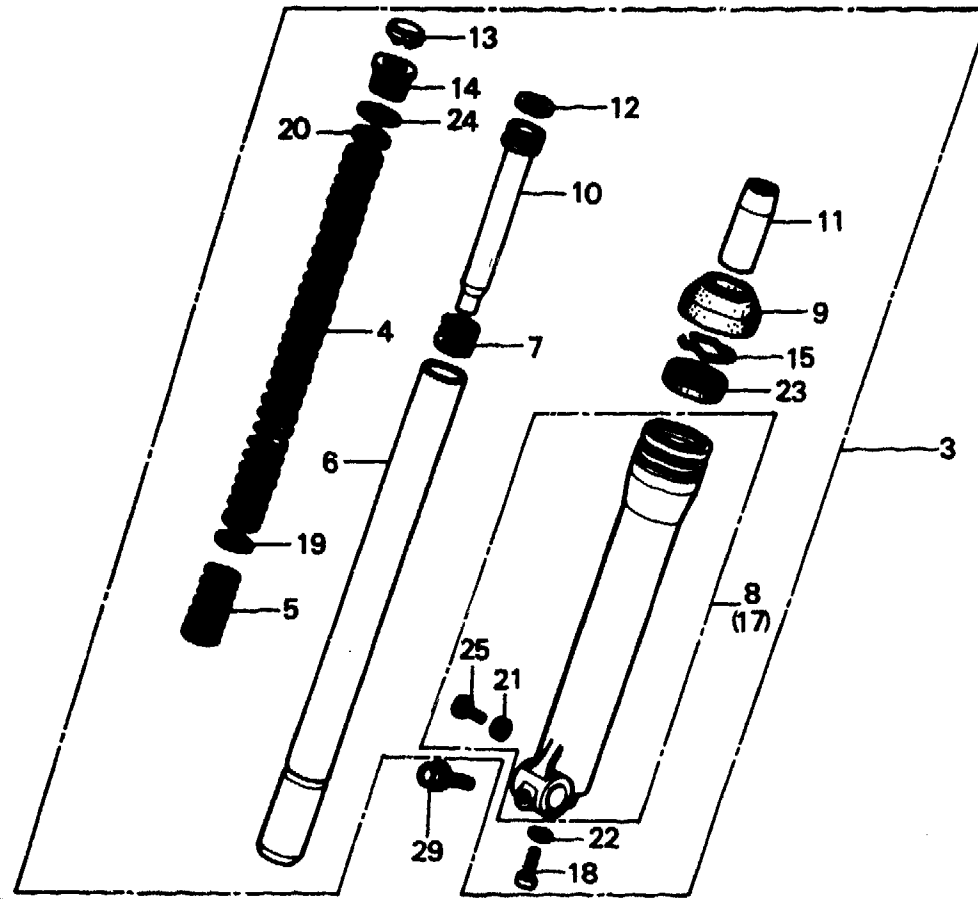
Vordergabel

(XL250S-Sz-SA-B,DK,DM,E,ED,
F1,F2,G1,G2,SA,SD,SW,U)

Horquilla delantero

(XL250S-Sz-SA-B,DK,DM,E,ED,
F1,F2,G1,G2,SA,SD,SW,U)

← FWD



B428-22C

Service item	F.R.T.	Ref. No.	Part No.	Description	Reqd. No.					Serial No.	Area code
					S	Sz	SA	SB	Rc		
		27	94050-04000	NUT, FLANGE, 4MM	1	1					CM B,DK,DM,E,ED,F,F1,F2 G,G1,G2,SA,SD,SW,U
		28	95700-06016-00	BOLT, FLANGE, 6X16	1	1					CM B,DK,DM,E,ED,F,F1,F2 G,G1,G2,SA,SD,SW,U
		29	95700-08050-00	BOLT, FLANGE, 8X50	1	1					CM B,DK,DM,E,ED,F,F1,F2 G,G1,G2,SA,SD,SW,U

1982.01.10

E

L1

L 2

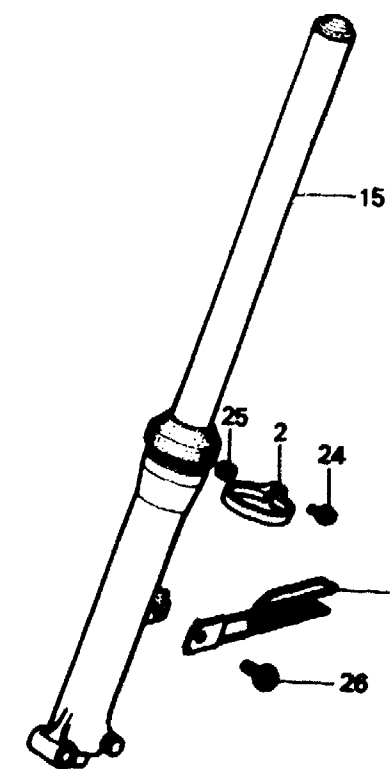
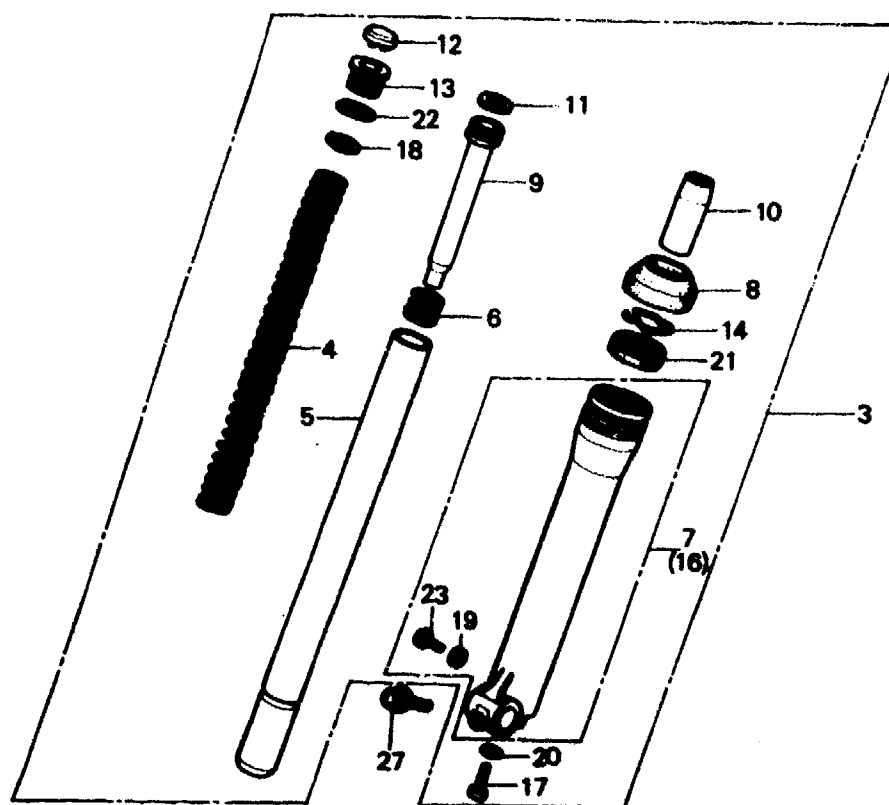
F-8-1

**Front fork
(XL250SA,SB-CM)**

**Fourche avant
(XL250SA,SB-CM)**

**Vordergabel
(XL250SA,SB-CM)**

**Horquilla delantero
(XL250SA,SB-CM)**



←FWD

B428-22B

Service item	F.R.T.	Ref. No.	Part No.	Description	Reqd. No.				Serial No.	Area code
					S	Sz	SA	Sb		
FORK ASSY., FR. (ADD 0.2 FOR EACH.)	0.5	1	44832-428-870	CLAMP, SPEEDOMETER	1					CM
SPRING, FR. CUSHION	0.2	2	45469-428-000	GUIDE C, BRAKE CABLE	1					CM
PIPE COMP., FR. FORK (ADD 0.4 FOR EACH.)	0.7	3	51400-428-872	FORK ASSY., R. FR.	1			5200430	5200430	CM
			51400-428-873	FORK ASSY., R. FR.	1			5200431	5204066	CM
			51400-428-874	FORK ASSY., R. FR.	1			5204067		CM
			51400-428-930	FORK ASSY., R. FR.	1					CM
OIL SEAL, 35X48X14 (ADD 0.4 FOR EACH.)		4	51401-428-871	SPRING, FR. CUSHION	2					CM
CASE COMP., BOTTOM (ADD 0.4 FOR EACH.)	0.8	5	51410-428-003	PIPE COMP., FR. FORK	2					CM
		6	51412-340-000	SPRING, FR. FORK REBOUND	2					CM
		7	51420-428-872	CASE COMP., R. BOTTOM	1			5200430	5200430	CM
			51420-428-671	CASE COMP., R. BOTTOM	1			5200431	5204066	CM
			51420-428-672	CASE COMP., R. BOTTOM	1			5204067		CM
			51420-428-013	CASE COMP., R. BOTTOM	1					CM
		8	51425-340-000	DUST SEAL, FR. FORK	2			5204066	5204066	CM
			91254-435-003	DUST SEAL, FR. FORK	2			5204067		CM
		9	51430-428-871	PIPE, SEAT	2					CM
		10	51432-371-003	PIECE, OIL LOCK	2					CM

L 3

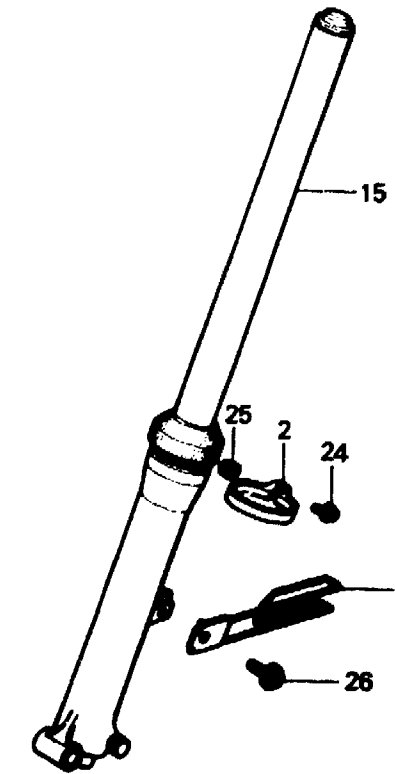
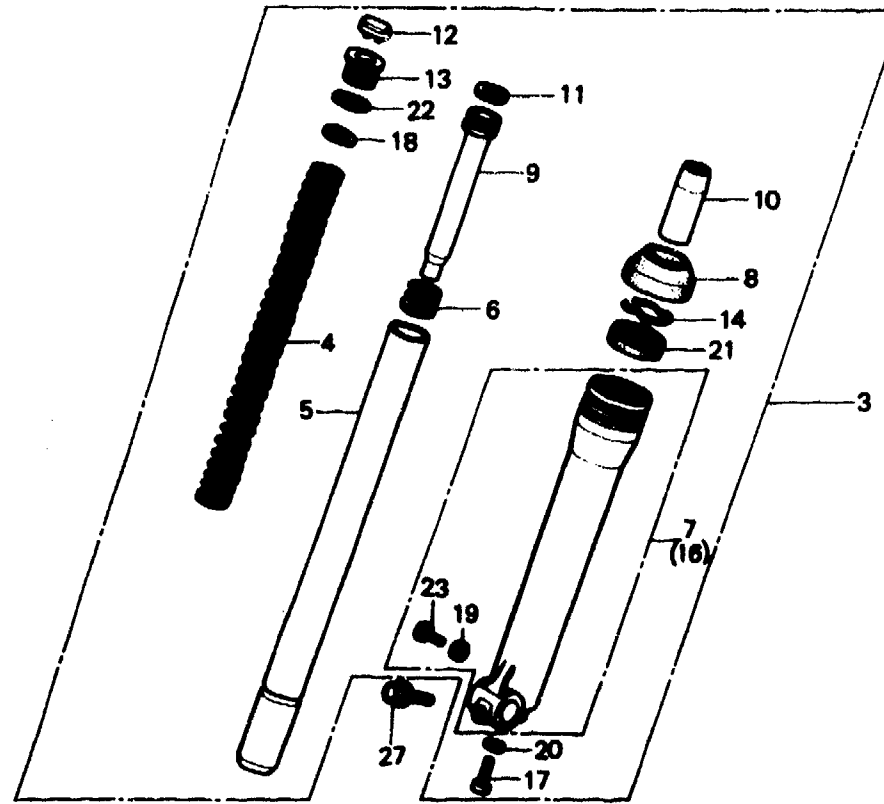
F-8-1

**Front fork
(XL250SA,SB-CM)**

**Fourche avant
(XL250SA,SB-CM)**

**Vordergabel
(XL250SA,SB-CM)**

**Horquilla delantero
(XL250SA,SB-CM)**



FWD

B428-22B

Service item	F.R.T.	Ref. No.	Part No.	Description	Reqd. No.					Serial No.	Area code
					S	Sz	SA	Sb	Rc		
		11	51437-400-771	RING, PISTON				2	2		CM
		12	51449-428-003	CAP, FORK PIPE				2	2		CM
		13	51454-428-003	BOLT, FR. FORK				2	2		CM
		14	51466-375-000	RING, OIL SEAL STOPPER				2	2		CM
		15	51500-428-872	FORK ASSY., L. FR.				1		5200430	CM
			51500-428-873	FORK ASSY., L. FR.				1		5200431 5204066	CM
			51500-428-874	FORK ASSY., L. FR.				1		5204067	CM
			51500-428-930	FORK ASSY., L. FR.					1		CM
		16	51520-428-872	CASE COMP., L. BOTTOM				1		5200430	CM
			51520-428-671	CASE COMP., L. BOTTOM				1		5200431 5204066	CM
			51520-428-672	CASE COMP., L. BOTTOM				1		5204067	CM
			51520-428-013	CASE COMP., L. BOTTOM					1		CM
		17	90116-283-010	BOLT, SOCKET, 8MM				2	2		CM
		18	90504-425-003	WASHER, FR. FORK				2	2		CM
		19	90543-273-000	PACKING, FR. FORK DRAIN COCK				2	2		CM
		20	90544-283-000	WASHER, SPECIAL, 8MM				2	2		CM

1982.01.10

E

L3

L 4

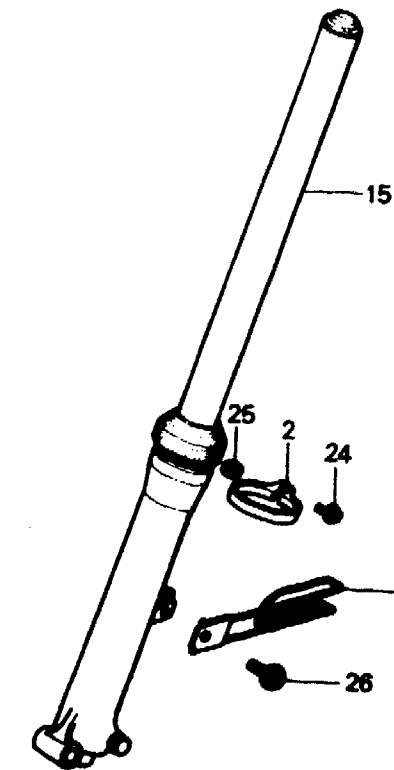
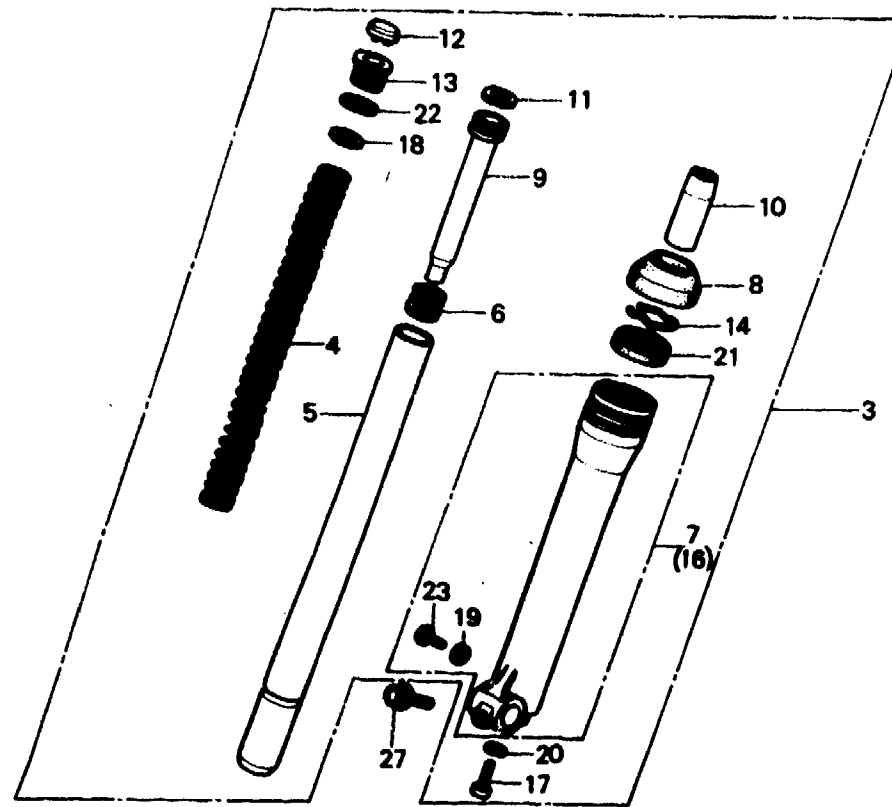
F-8-1

**Front fork
(XL250SA,SB-CM)**

**Fourche avant
(XL250SA,SB-CM)**

**Vordergabel
(XL250SA,SB-CM)**

**Horquilla delantero
(XL250SA,SB-CM)**



B428-22B

Service item	F.R.T.	Ref. No.	Part No.	Description	Reqd. No.				Serial No.	Area code
					S	Sz	SA	Sb		
		21	91255-400-771	OIL SEAL, 35X48X14	2				5204066	CM
			91255-434-003	OIL SEAL, 35X48X11	2				5204067	CM
		22	91356-428-003	O-RING, 25.7X28	2		2			CM
		23	92000-06008	BOLT, HEX., 6X8	2		2			CM
		24	93891-04025-10	SCREW-WASHER, 4X25	1		1			CM
		25	94050-04000	NUT, FLANGE, 4MM	1		1			CM
		26	95700-06016-00	BOLT, FLANGE, 6X16	1		1			CM
		27	95700-08050-00	BOLT, FLANGE, 8X50	1		1			CM

L 5

F-8-2

Front fork

(XL250S_B-B,DK,DM,E,ED,F1,
F2,G1,G2,SA,SD,SW,U)

Fourche avant

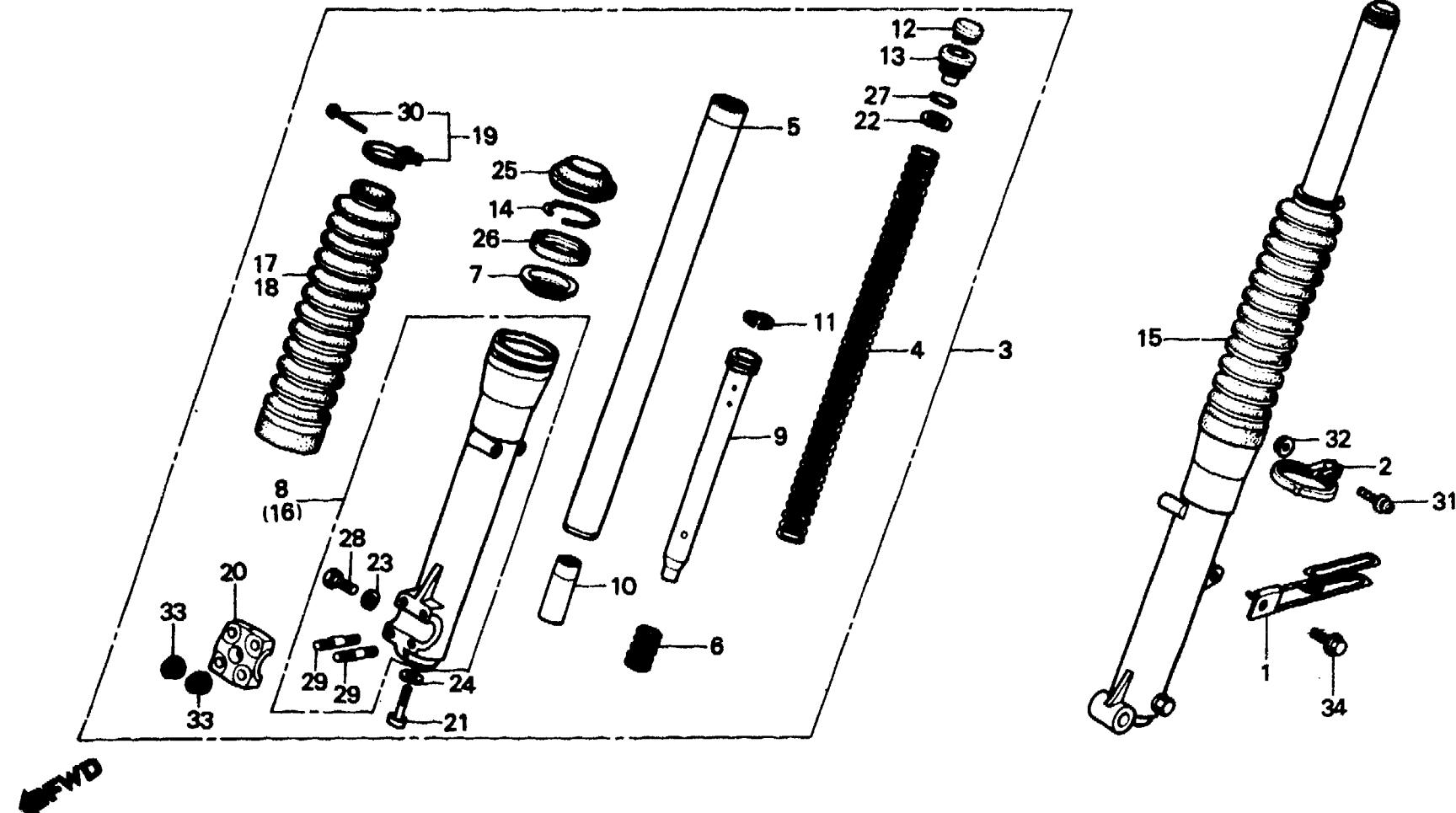
(XL250S_B-B,DK,DM,E,ED,F1,
F2,G1,G2,SA,SD,SW,U)

Vordergabel

(XL250S_B-B,DK,DM,E,ED,F1,
F2,G1,G2,SA,SD,SW,U)

Horquilla delantera

(XL250S_B-B,DK,DM,E,ED,F1,
F2,G1,G2,SA,SD,SW,U)



B435-65

Service item	F.R.T.	Ref. No.	Part No.	Description	Reqd. No.					Serial No.	Area code
					S	Sz	SA	SB	Rc		
FORK ASSY., FR. (ADD 0.2 FOR EACH.)	0.5	1	44832-428-870	CLAMP, SPEEDOMETER					1		B,DK,DM,E,ED,F1,F2,G1 G2,SA,SD,SW,U
BOOT, FR. FORK (ADD 0.1 FOR EACH.)		2	45469-434-000	GUIDE C, BRAKE CABLE					1		B,DK,DM,E,ED,F1,F2,G1 G2,SA,SD,SW,U
SPRING, FR. CUSHION	0.2	3	51400-428-831ZA	FORK ASSY., R. FR. *R-110*					1		B,DK,DM,E,ED,F1,F2,G1 G2,SA,SD,SW,U
PIPE COMP., FR. FORK (ADD 0.4 FOR EACH.)	0.7		51400-428-831ZB	FORK ASSY., R. FR. *NH-1*					1		B,DK,DM,E,ED,F1,F2,G1 G2,SA,SD,SW,U
OIL SEAL, 35X48X11 (ADD 0.4 FOR EACH.)		4	51401-428-901	SPRING, FR. CUSHION					2		B,DK,DM,E,ED,F1,F2,G1 G2,SA,SD,SW,U
CASE COMP., BOTTOM (ADD 0.4 FOR EACH.)	0.8	5	51410-428-831	PIPE COMP., FR. FORK					2		B,DK,DM,E,ED,F1,F2,G1 G2,SA,SD,SW,U
		6	51412-340-000	SPRING, FR. FORK REBOUND					2		B,DK,DM,E,ED,F1,F2,G1 G2,SA,SD,SW,U
		7	51412-429-003	RING, BACK UP					2		B,DK,DM,E,ED,F1,F2,G1 G2,SA,SD,SW,U
		8	51420-435-003	CASE COMP., R. BOTTOM					1		B,DK,DM,E,ED,F1,F2,G1 G2,SA,SD,SW,U
		9	51430-428-871	PIPE, SEAT					2		B,DK,DM,E,ED,F1,F2,G1 G2,SA,SD,SW,U

1982.01.10

E

L5

L 6

F-8-2

Front fork

(XL250S_B-B,DK,DM,E,ED,F1,
F2,G1,G2,SA,SD,SW,U)

Fourche avant

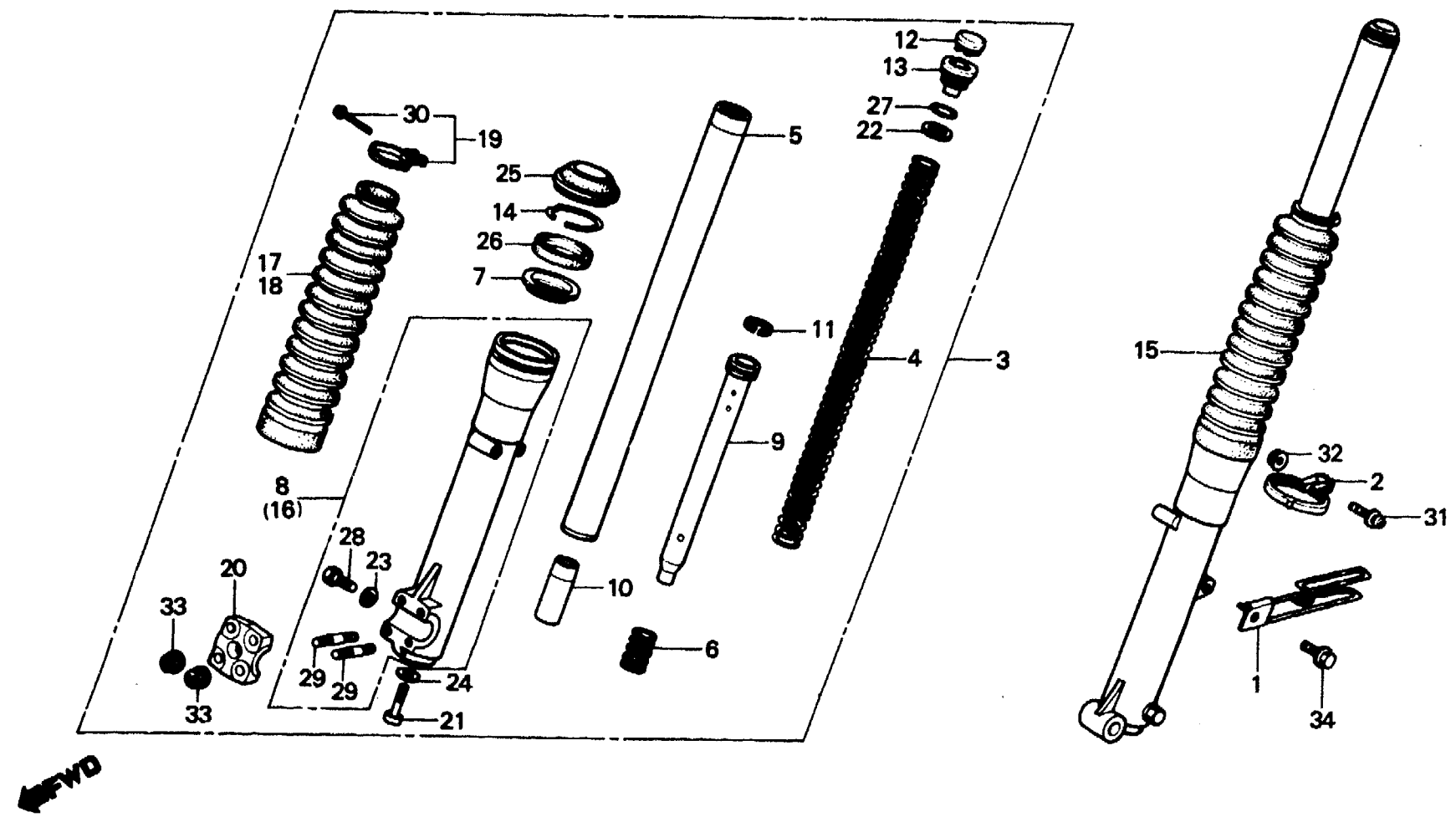
(XL250S_B-B,DK,DM,E,ED,F1,
F2,G1,G2,SA,SD,SW,U)

Vordergabel

(XL250S_B-B,DK,DM,E,ED,F1,
F2,G1,G2,SA,SD,SW,U)

Horquilla delantero

(XL250S_B-B,DK,DM,E,ED,F1,
F2,G1,G2,SA,SD,SW,U)



B435-65

Service item	F.R.T.	Ref. No.	Part No.	Description	Reqd. No.					Serial No.	Area code
					S	Sz	SA	Sb	Rc		
		10	51432-371-003	PIECE, OIL LOCK					2		B,DK,DM,E,ED,F1,F2,G1 G2,SA,SD,SW,U
		11	51437-400-771	RING, PISTON					2		B,DK,DM,E,ED,F1,F2,G1 G2,SA,SD,SW,U
		12	51449-428-003	CAP, FORK PIPE					2		B,DK,DM,E,ED,F1,F2,G1 G2,SA,SD,SW,U
		13	51454-428-003	BOLT, FR. FORK					2		B,DK,DM,E,ED,F1,F2,G1 G2,SA,SD,SW,U
		14	51466-375-000	RING, OIL SEAL STOPPER					2		B,DK,DM,E,ED,F1,F2,G1 G2,SA,SD,SW,U
		15	51500-428-831ZA	FORK ASSY., L. FR. *R-110*					1		B,DK,DM,E,ED,F1,F2,G1 G2,SA,SD,SW,U
			51500-428-831ZB	FORK ASSY., L. FR. *NH-1*					1		B,DK,DM,E,ED,F1,F2,G1 G2,SA,SD,SW,U
		16	51520-435-003	CASE COMP., L. BOTTOM					1		B,DK,DM,E,ED,F1,F2,G1 G2,SA,SD,SW,U
		17	51611-428-831	BOOT, FR. FORK (MONZA RED)					2		B,DK,DM,E,ED,F1,F2,G1 G2,SA,SD,SW,U
		18	51611-429-771	BOOT, FR. FORK (BLACK)					2		B,DK,DM,E,ED,F1,F2,G1 G2,SA,SD,SW,U

1982.01.10

E

L6

L 7

F-8-2

Front fork

(XL250S_B-B,DK,DM,E,ED,F1,
F2,G1,G2,SA,SD,SW,U)

Fourche avant

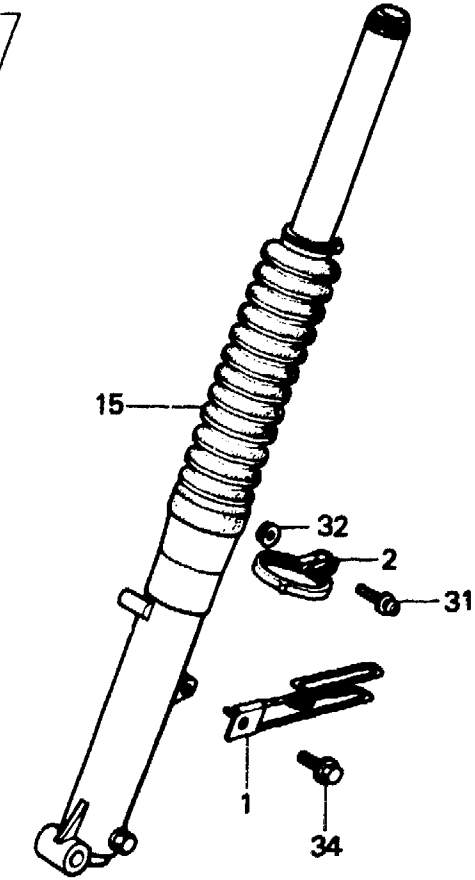
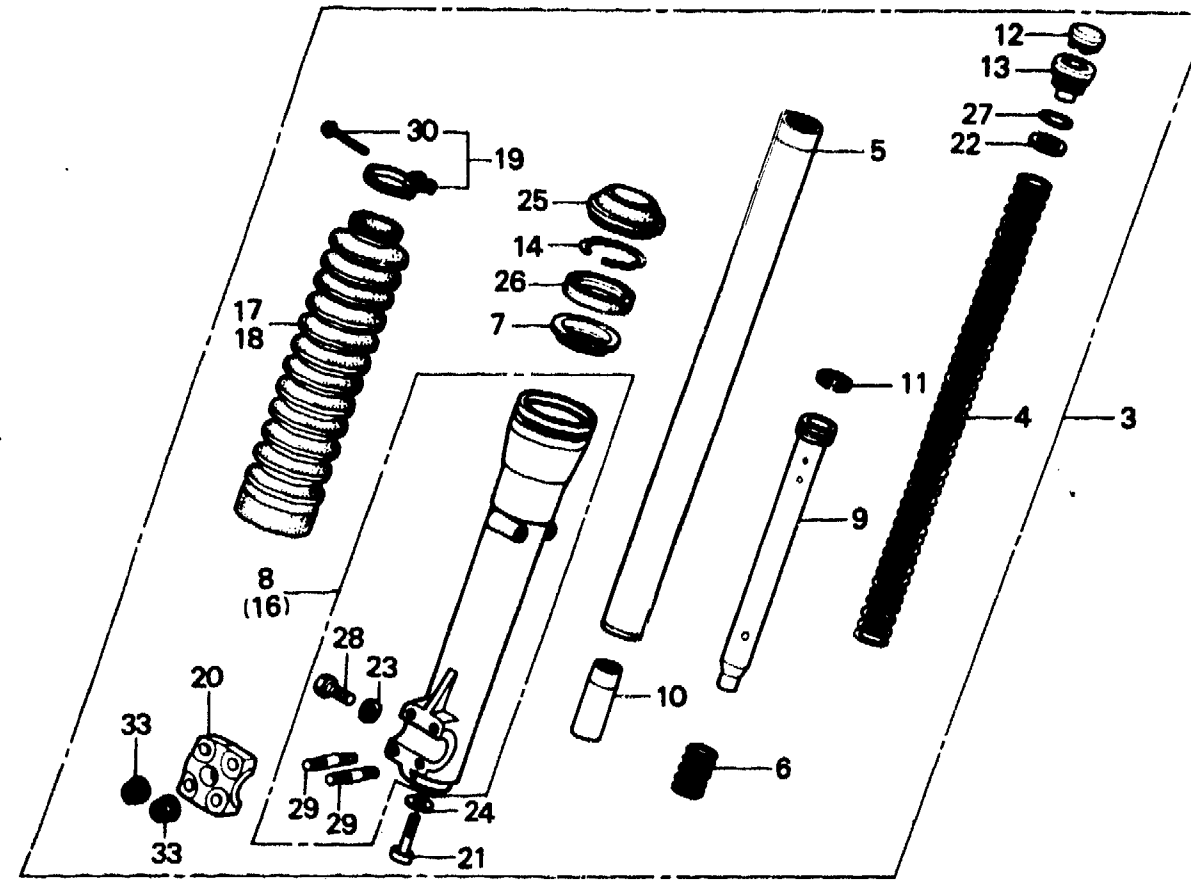
(XL250S_B-B,DK,DM,E,ED,F1,
F2,G1,G2,SA,SD,SW,U)

Vordergabel

(XL250S_B-B,DK,DM,E,ED,F1,
F2,G1,G2,SA,SD,SW,U)

Horquilla delantero

(XL250S_B-B,DK,DM,E,ED,F1,
F2,G1,G2,SA,SD,SW,U)



B435-65

Service item	F.R.T.	Ref. No.	Part No.	Description	Reqd. No.					Serial No.	Area code
					S	Sz	SA	Se	Rc		
		19	51612-434-000	BAND, FR. FORK BOOT				2			B,DK,DM,E,ED,F1,F2,G1 G2,SA,SD,SW,U
		20	51634-429-000	HOLDER, AXLE				1			B,DK,DM,E,ED,F1,F2,G1 G2,SA,SD,SW,U
		21	90116-283-010	BOLT, SOCKET, 8MM				2			B,DK,DM,E,ED,F1,F2,G1 G2,SA,SD,SW,U
		22	90504-425-003	WASHER, FR. FORK				2			B,DK,DM,E,ED,F1,F2,G1 G2,SA,SD,SW,U
		23	90543-273-000	PACKING, FR. FORK DRAIN COCK				2			B,DK,DM,E,ED,F1,F2,G1 G2,SA,SD,SW,U
		24	90544-283-000	WASHER, SPECIAL, 8MM				2			B,DK,DM,E,ED,F1,F2,G1 G2,SA,SD,SW,U
		25	91254-434-003	DUST SEAL, 35MM				2			B,DK,DM,E,ED,F1,F2,G1 G2,SA,SD,SW,U
		26	91255-434-013	OIL SEAL, 35X48X11				2			B,DK,DM,E,ED,F1,F2,G1 G2,SA,SD,SW,U
		27	91356-428-003	O-RING, 25.7X28				2			B,DK,DM,E,ED,F1,F2,G1 G2,SA,SD,SW,U
		28	92000-06008	BOLT, HEX., 6X8				2			B,DK,DM,E,ED,F1,F2,G1 G2,SA,SD,SW,U

1982.01.10

E

L7

L 8

F-8-2

Front fork

(XL250S_B-B,DK,DM,E,ED,F1,
F2,G1,G2,SA,SD,SW,U)

Fourche avant

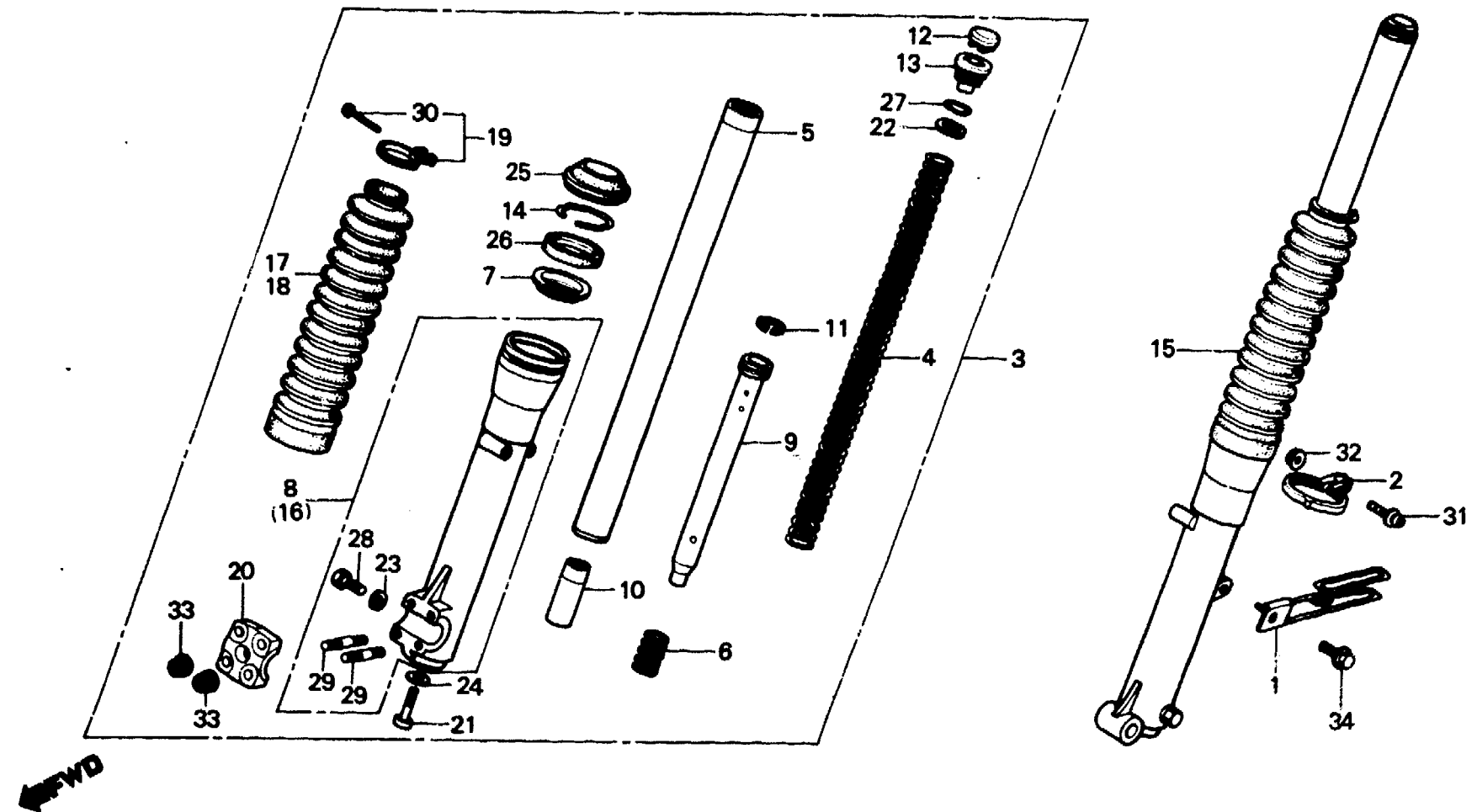
(XL250S_B-B,DK,DM,E,ED,F1,
F2,G1,G2,SA,SD,SW,U)

Vordergabel

(XL250S_B-B,DK,DM,E,ED,F1,
F2,G1,G2,SA,SD,SW,U)

Horquilla delantera

(XL250S_B-B,DK,DM,E,ED,F1,
F2,G1,G2,SA,SD,SW,U)



B435-65

Service item	F.R.T.	Ref. No.	Part No.	Description	Reqd. No.					Serial No.	Area code
					S	Sz	SA	S _B	Rc		
		29	92700-06035-0E	BOLT, STUD, 6X35					4		B,DK,DM,E,ED,F1,F2,G1 G2,SA,SD,SW,U
		30	93500-03020-0A	SCREW, PAN, 3X20					2		B,DK,DM,E,ED,F1,F2,G1 G2,SA,SD,SW,U
		31	93891-04025-10	SCREW-WASHER, 4X25					1		B,DK,DM,E,ED,F1,F2,G1 G2,SA,SD,SW,U
		32	94050-04000	NUT, FLANGE, 4MM					1		B,DK,DM,E,ED,F1,F2,G1 G2,SA,SD,SW,U
		33	94050-06000	NUT, FLANGE, 6MM					4		B,DK,DM,E,ED,F1,F2,G1 G2,SA,SD,SW,U
		34	95700-06016-00	BOLT, FLANGE, 6X16					1		B,DK,DM,E,ED,F1,F2,G1 G2,SA,SD,SW,U

1982.01.10

E

L8

L 9

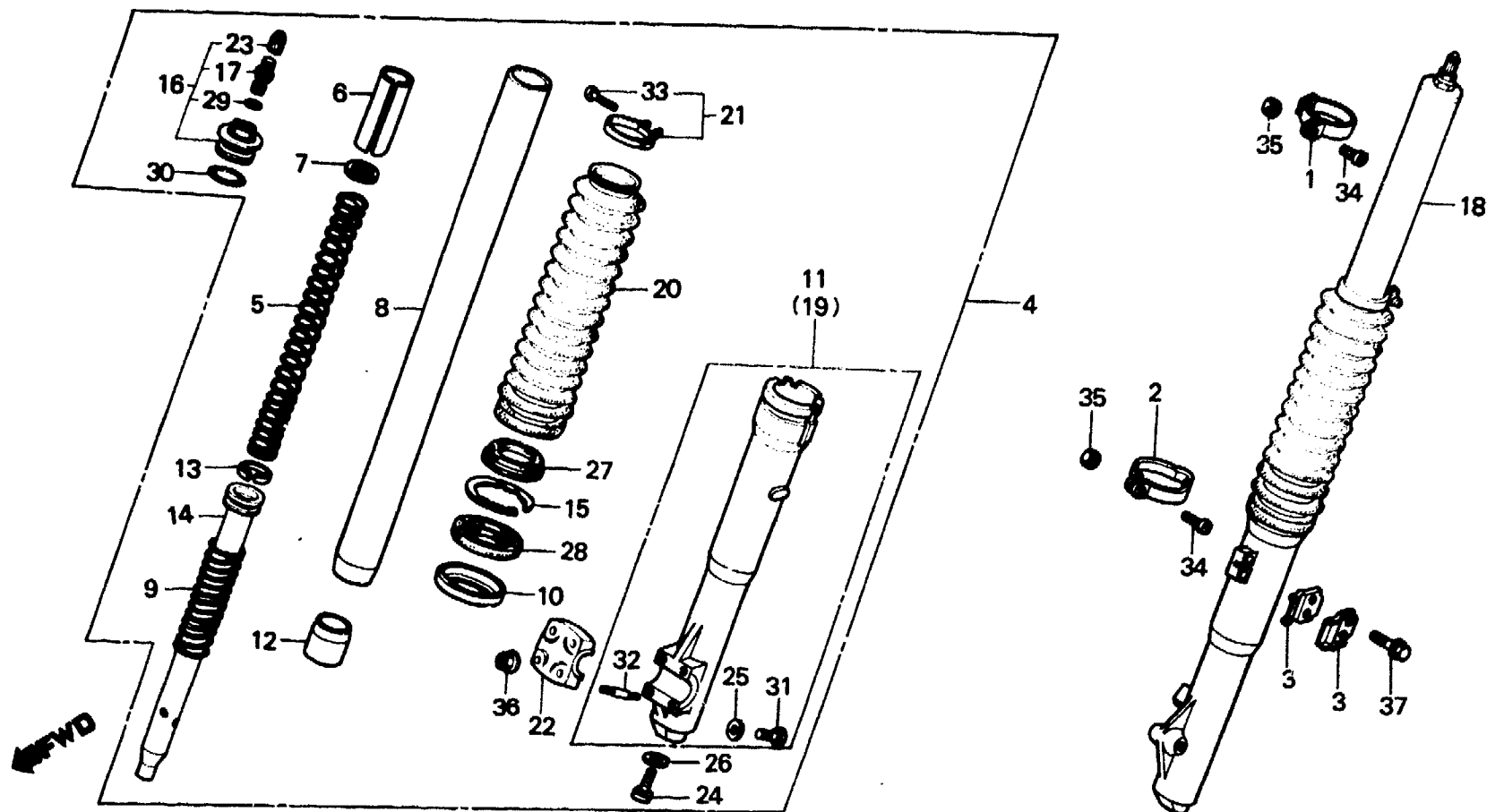
F-8-3

**Front fork
(XL250Rc)**

**Fourche avant
(XL250Rc)**

**Vordergabel
(XL250Rc)**

**Horquilla delantero
(XL250Rc)**



BKB7-27

Service item	F.R.T.	Ref. No.	Part No.	Description	Reqd. No.				Serial No.	Area code
					S	Sz	SA	Sa		
FORK ASSY., FR. (ADD 0.2 FOR EACH.)	0.5	1	32105-MC4-610	CLAMPER, SWITCH CORD					2	ED, G1, G2, SD
BOOT, FR. FORK (ADD 0.1 FOR EACH.)		2	44832-KB7-000	CLAMPER, SPEEDOMETER CABLE					1	
SPRING, FR. CUSHION	0.2	3	45461-MC4-000	CLAMPER, FR. BRAKE CABLE					2	
PIPE COMP., FR. FORK (ADD 0.4 FOR EACH.)	0.7	4	51400-KB7-003	FORK ASSY., R. FR. (SHOWA)					1	
OIL SEAL, 35X48X11 (ADD 0.4 FOR EACH.)		5	51401-KB7-003	SPRING, FR. CUSHION					2	
CASE COMP., BOTTOM (ADD 0.4 FOR EACH.)	0.8	6	51402-KA2-681	COLLAR, SPRING					2	
VALVE COMP., AIR	0.1	7	51403-KA2-681	SEAT, SPRING					2	
		8	51410-KB7-003	PIPE COMP., FR. FORK					2	
		9	51412-KA2-681	SPRING, REBOUND					2	
		10	51412-422-003	RING, BACK UP					2	
		11	51420-KB7-003	CASE COMP., R. BOTTOM					1	
		12	51432-KB7-003	PIECE, OIL LOCK					2	
		13	51437-KA2-681	RING, PISTON					2	
		14	51440-KB7-003	PIPE, SEAT					2	
		15	51447-469-003	CIRCLIP, INTERNAL, 51.5					2	

1982.01.10

E

L9

L 10

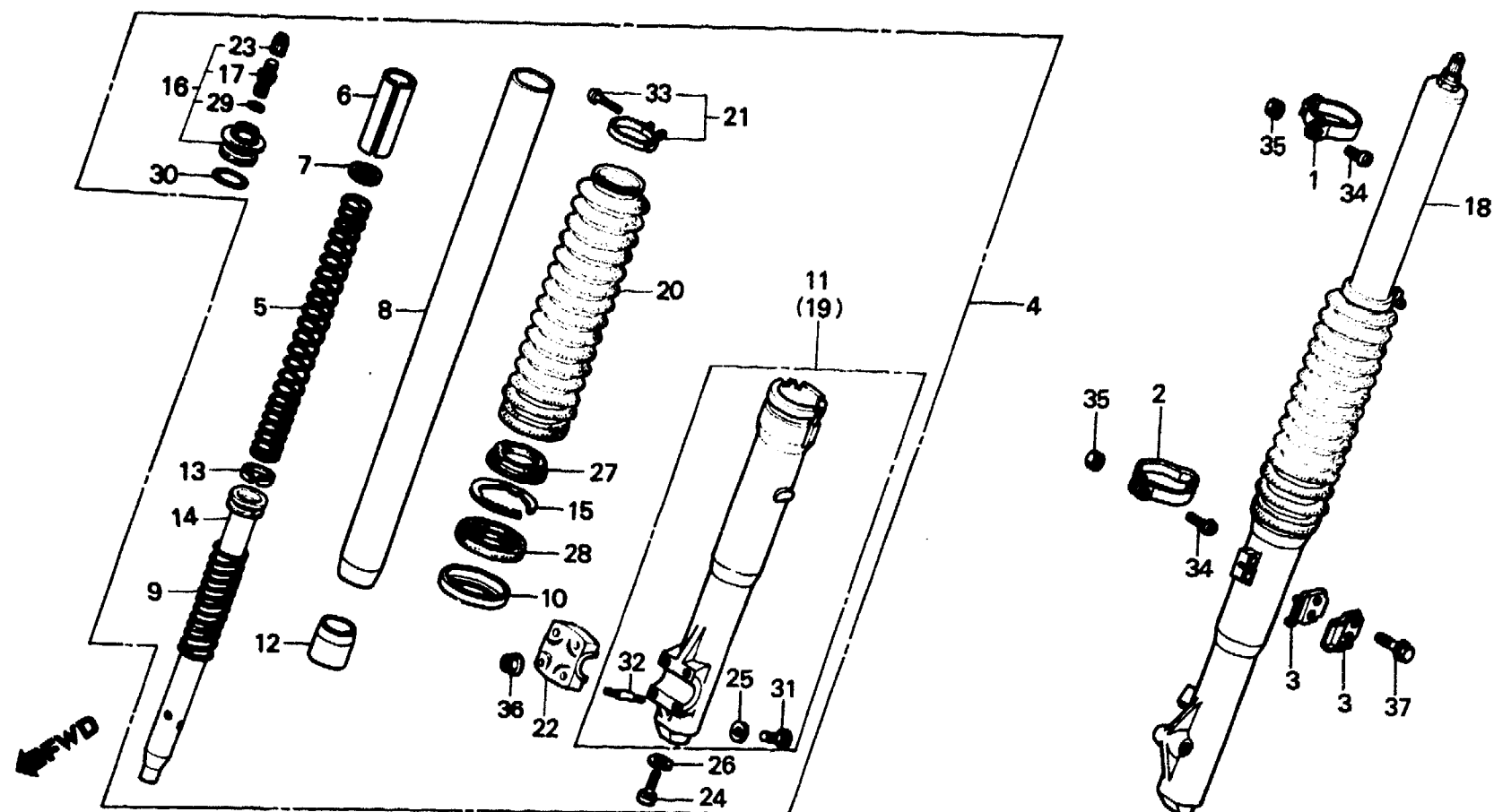
F-8-3

**Front fork
(XL250Rc)**

**Fourche avant
(XL250Rc)**

**Vordergabel
(XL250Rc)**

**Horquilla delantero
(XL250Rc)**



BKB7-27

Service item	F.R.T.	Ref. No.	Part No.	Description	Reqd. No.				Serial No.	Area code
					S	Sz	SA	Sb		
		16	51450-KB7-003	BOLT ASSY., FR. FORK						2
		17	51456-469-013	VALVE COMP., AIR (SHOWA)						2
		18	51500-KB7-003	FORK ASSY., L. FR. (SHOWA)						1
		19	51520-KB7-003	CASE COMP., L. BOTTOM						1
		20	51611-429-771	BOOT, FR. FORK						2
		21	51612-434-000	BAND, FR. FORK BOOT						2
		22	51634-MA0-003	HOLDER, AXLE						1
		23	52425-381-771	CAP, AIR VALVE						2
		24	90116-283-010	BOLT, SOCKET, 8MM						2
		25	90543-273-000	PACKING, FR. FORK DRAIN COCK						2
		26	90544-283-000	WASHER, SPECIAL, 8MM						2
		27	91254-434-003	DUST SEAL, 35MM						2
		28	91255-434-013	OIL SEAL, 35X48X11						2
		29	91301-469-003	O-RING, 5.8X1.9						2
		30	91356-428-003	O-RING, 25.7X28						2

1982.01.10

E

L10

L 11

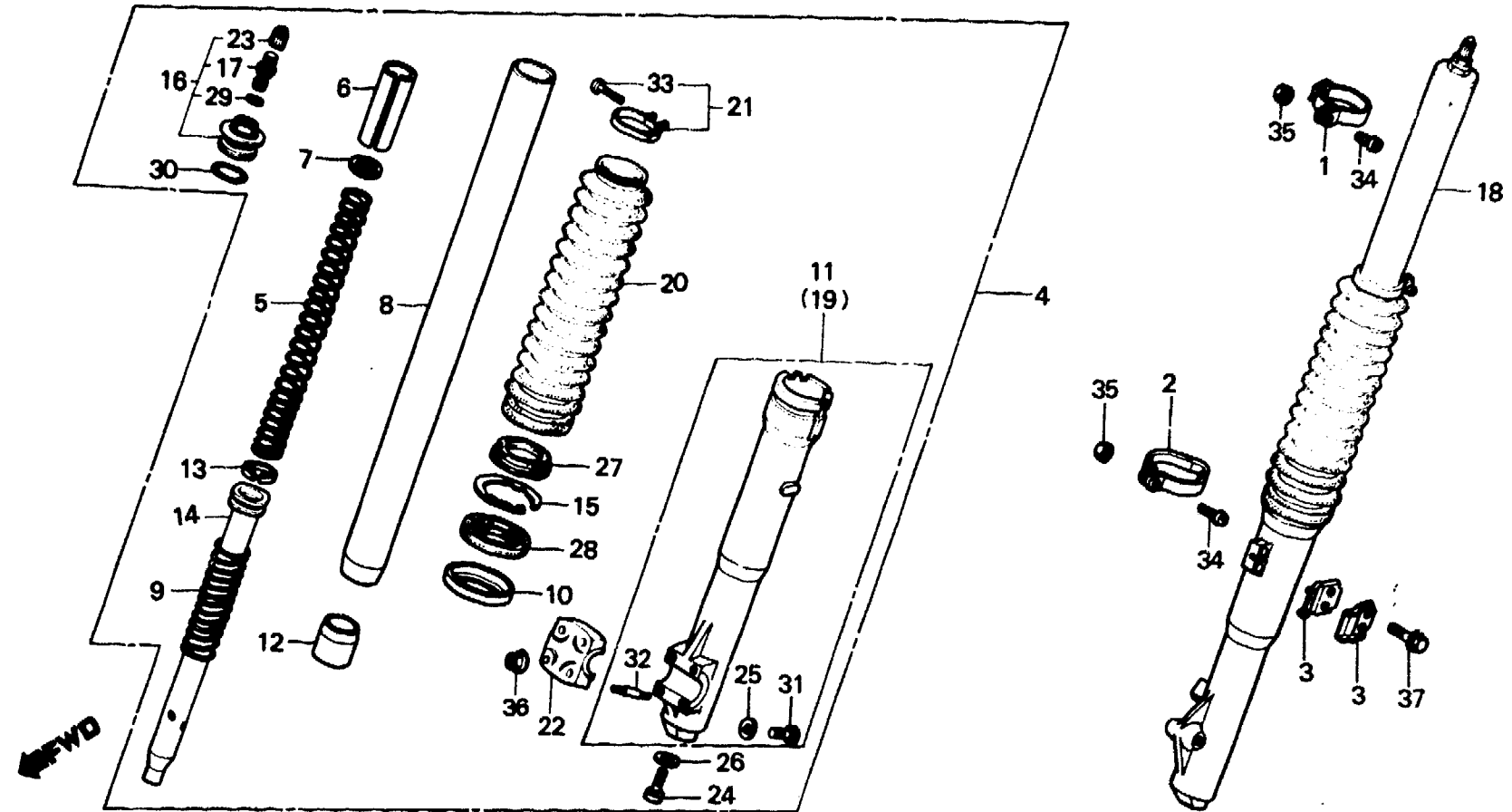
F-8-3

**Front fork
(XL250Rc)**

**Fourche avant
(XL250Rc)**

**Vordergabel
(XL250Rc)**

**Horquilla delantero
(XL250Rc)**



BKB7-27

Service item	F.R.T.	Ref. No.	Part No.	Description	Reqd. No. XL250				Serial No.	Area code
					S	Sz	SA	Sb		
		31	92000-06008	BOLT, HEX., 6X8					2	
		32	92700-06035-0E	BOLT, STUD, 6X35					4	
		33	93500-03020-0A	SCREW, PAN, 3X20					2	
		34	93500-05018-0A	SCREW, PAN, 5X18					1	B, CM, DK, DM, E, F1, F2, IT SA, SW, U
		35	94001-05000-0S	NUT, HEX., 5MM					3	ED, G1, G2, SD
									1	B, CM, DK, DM, E, F1, F2, IT
									3	SA, SW, U
		36	94050-06000	NUT, FLANGE, 6MM					4	
		37	95700-06016-00	BOLT, FLANGE, 6X16					2	ED, G1, G2, SD

1982.01.10

E

L11